

# SYMBOL LEGEND

## SINGLE LINE PIPE FITTINGS

	PLUG VALVE		BACK FLOW PREVENTER
	PINCH VALVE		HORIZONTAL VALVE
	TWO-WAY VALVE		CONTINUATION
	THREE-WAY CONTROL VALVE		HEAT TRACE
	NEEDLE VALVE		SINGLE GAS SUPPLY VALVE
	SHUTOFF COCK		DOUBLE GAS SUPPLY VALVE
	SWING CHECK VALVE		AIR SUPPLY VALVE
	SPRING TYPE CHECK VALVE		FLOW DIRECTION
	MULTIPURPOSE SPRING TYPE CHECK VALVE		WATER METER
	MULTIPURPOSE ANGLE VALVE		PUMP
	ANGLE STOP AND CHECK		THRUST BLOCK
	FLOW MEASURING VALVE		FLANGE
	DIFFERENTIAL PRV REGULATOR		SCREWED UNION
	DIFFERENTIAL REDUCING REGULATOR		90 DEGREE ELBOW
	GAS PRV		45 DEGREE ELBOW
	SAFETY OR RELIEF VALVE		ELBOW UP
	QUICK OPEN OR CLOSE		ELBOW DOWN
	HOSE BIBB VALVE		BASE SUPPORTED ROUND ELBOW
	LOCK SHIELD		PIPE CAP
	HAND WHEEL RISE STEM (OS&Y)		TEE
	GEAR OPERATED MANUAL VALVE		TEE UP
	SOLENOID OPERATED VALVE		TEE DOWN
	VACUUM BREAKER		BOTTOM BRANCH
	FLOW AND REGULATING VALVE		TOP BRANCH
	INVERTED BUCKET STEAM TRAP		GATE VALVE
	FLOAT AND THERMOSTATIC STEAM TRAP		BALL VALVE
	THERMOSTATIC STEAM BIMETAL AND BELLOW		BUTTERFLY VALVE
	THERMODYNAMIC (DISK) STEAM TRAP		CONTROL BALANCING VALVE
	VARIABLE ORIFICE (PISTON) STEAM TRAP		GLOBE VALVE
	SIGHT GLASS		ANGLE GLOBE VALVE
	FIXED ORIFICE STEAM TRAP		EXPANSION COMPENSATOR
			FLEXIBLE CONNECTION

## PLUMBING & DRAINAGE

	ROOF DRAIN		EXISTING DOMESTIC COLD WATER
	FLOOR DRAIN		DOMESTIC COLD WATER
	HUB DRAIN		DOMESTIC HOT WATER
	FLOOR DRAIN		EXISTING DOMESTIC HOT WATER
	CATCH BASIN		EXISTING DOMESTIC HOT WATER RECIRCULATION
	INTERCEPTOR		DOMESTIC WATER
	FLOOR DRAIN WITH TRAP		EXISTING DOMESTIC WATER
	SQUARE SUPPLY ELBOW WITH TURNING VANES		DOMESTIC WATER TO BE REMOVED
	SQUARE SUPPLY ELBOW		SANITARY DRAIN ABOVE
	CLEAN OUT PLUG		SANITARY DRAIN BELOW
	CLEAN OUT FLOOR		VENT
	TRAP		ACID WASTE
	HOT / DRAIN / COLD CONNECTIONS		ACID VENT
	WATER HAMMER ARRESTOR		STORM DRAIN ABOVE
			STORM DRAIN BELOW
			WEEPING TILE
			AIR WITH DETAIL
			VACUUM SERVICE
			LOW PRESSURE GAS
			MEDIUM PRESSURE GAS
			HIGH PRESSURE GAS
			EXISTING SANITARY DRAIN ABOVE GRADE OR SLAB
			EXISTING SANITARY DRAIN BELOW GRADE OR SLAB
			EXISTING STORM DRAIN ABOVE GRADE OR SLAB
			EXISTING STORM DRAIN BELOW GRADE OR SLAB
			NON-POTABLE WATER

## DOUBLE LINE DUCTWORK

	SUPPLY DUCT UP
	SUPPLY DUCT DOWN
	RETURN DUCT UP
	RETURN DUCT DOWN
	EXHAUST DUCT UP
	EXHAUST DUCT DOWN
	SQUARE SUPPLY ELBOW WITH TURNING VANES
	SQUARE SUPPLY ELBOW
	45° RADIUS ELBOW
	90° RADIUS ELBOW WITH TURNING VANES
	90° RADIUS ROUND DUCT ELBOW
	45° RADIUS ROUND DUCT ELBOW
	DUCT FLEX CONNECTION
	SUPPLY AIR FLOW ARROW
	RETURN AIR FLOW ARROW
	SUPPLY AIR DIFFUSER
	RETURN AIR DIFFUSER
	EXHAUST AIR DIFFUSER
	LINEAR S/R DIFFUSER
	NON-DUCTED LINEAR RETURN DIFFUSER
	LIGHT TROFFER
	LINEAR BAR GRILLE
	TAKEOFF CONNECTION
	SPIN-ON CONNECTION
	EXTERNALLY INSULATED DUCTWORK
	INTERNALLY LINED DUCTWORK
	EXISTING DUCTWORK
	SQUARE TO ROUND TRANSITION
	FLEXIBLE DUCTWORK
	ELECTRIC DUCT HEATER

## HVAC EQUIPMENT & LABELS

	CENTRIFUGAL FAN		BACKDRAFT DAMPER
	CEILING FAN		AUTO CONTROL DAMPER
	ROOF VENTILATOR SUPPLY		MANUAL DAMPER
	ROOF VENTILATOR EXHAUST		FIRE DAMPER
	SMALL EXHAUST FAN		SMOKE DAMPER
	ELECTRIC COIL		SMOKE AND FIRE DAMPER
	HUMIDIFIER		SOUND ATTENUATOR
	FILTER		ACCESS PANEL
	OPPOSED BLADE DAMPER		AIR SEPARATOR
	PARALLEL BLADE DAMPER		COOLING COIL
	LOUVER		EAV EXHAUST AIR VALVE
	THERMOSTAT		AIR FILTER
	DAMPER		FLASH TANK/FIN TUBE
	MANUAL DAMPER		FINNED TUBE RADIATOR
	SPLITTER DAMPER		HUMIDIFIER
	DAMPER MOTOR		HEATING COIL
	HORIZONTAL ACCESS DOOR TOP		PRESSURE REDUCING VALVE
	HORIZONTAL ACCESS DOOR BOTTOM		REHEAT COIL
	LOW TEMPERATURE SENSOR		SUPPLY AIR VALVE
	HEAT DETECTOR		STEAM COIL
	SMOKE DETECTOR		SAFETY RELIEF VALVE
	WALL FIN RADIATION		AIR CONDITIONING UNIT
	VAV BOX		AIR HANDLING UNIT
	VAV BOX WITH 1 OR 2 ROW HEATING COIL		CONSTANT AIR VOLUME BOX
	VAV BOX WITH 3 OR 4 ROW HEATING COIL		CHILLER
	UNIT HEATER		CONDENSATE PUMP
	ENTRANCE HEATER		CLEAN STEAM GENERATOR
	FAN POWER TERMINAL		CABINET UNIT HEATER
			EXHAUST AIR HANDLING UNIT
			EVAPORATIVE FAN COOLER
			EXPANSION TANK
			EXHAUST FAN
			FAN COIL UNIT
			HEAT RECOVERY UNIT
			HEATING AND VENTILATING UNIT
			HEAT EXCHANGER
			PUMP
			RETURN AIR FAN
			SUPPLY FAN
			UNIT HEATER
			VAV
			VFD

CH = CANOPY HOOD  
FH = FUME HOOD  
GD = GENERAL DISHWASHER HOOD

## MECHANICAL DRAWING LIST

M-1.01 MECHANICAL SYMBOL LEGEND AND DRAWING LIST	N.T.S.
M-2.01 LEVEL 3 HVAC PLANS - PHASE 1	1:100
M-2.02 LEVEL 3 HVAC PLANS - PHASE 2	1:100
M-2.03 LEVEL 3 HVAC PLANS - PHASE 3	1:100
M-2.04 ROOF HVAC PLANS	1:100
M-3.01 LEVEL 3 PLUMBING PLAN - PHASE 1	1:100
M-3.02 LEVEL 3 PLUMBING PLAN - PHASE 2	1:100
M-3.03 LEVEL 3 PLUMBING PLAN - PHASE 3	1:100
M-4.01 LEVEL 3 FIRE PROTECTION PLAN - PHASE 1	1:100
M-4.02 LEVEL 3 FIRE PROTECTION PLAN - PHASE 2	1:100
M-4.03 LEVEL 3 FIRE PROTECTION PLAN - PHASE 3	1:100
M-5.01 SCHEMATIC & DETAILS	N.T.S.
M-6.01 ME SCHEDULES - PROPOSED	N.T.S.

## DOUBLE LINE PIPE FITTINGS

	PIPE CAP		ELBOW (90°)
	REDUCER: CONCENTRIC		ELBOW UP (90°)
	REDUCER: ECCENTRIC		GATE TOP
	TEE		CHECK VALVE (SIDE)
	PIPE HANGER		CHECK VALVE (TOP)
	PIPE		BALL VALVE
	PIPE SLEEVE		BUTTERFLY VALVE
	FLANGES: (SLIP ON 150LBS)		CBV
	FLANGES: (WELDNECK 150LBS)		GATE VALVE
	STANDARD ELBOW (45°)		GATE SLIDE
	ELBOW DOWN (90°)		

## TRANSITE PIPE FITTINGS

	22.5° ELBOW		PIPE CAP
	45° ELBOW		REDUCER: CONCENTRIC
	60° ELBOW		T BRANCH
	90° ELBOW		P-TRAP
	WYE BRANCH		RUNNING TRAP
	UP		BOTTOM
	DOWN		TOP
	SIDE		SIDE

## PLUMBING FIXTURES

	TANK WC
	WALL WC (FLUSH VALVE)
	FLOOR WC (FLUSH VALVE)
	URINAL
	SERVICE SINK / LAUNDRY TUB
	SINGLE BOWL SINK
	DOUBLE BOWL SINK
	WALL HUNG LAVATORY
	COUNTER MOUNT LAVATORY
	WASH FOUNTAIN
	WALL HUNG HANDICAPPED SINK
	DRINKING FOUNTAIN
	EMERGENCY EYEWASH
	BATH TUB
	SHOWER

## SINGLE LINE DUCTWORK

	45° ELBOW
	90° ELBOW
	TURN VANE
	90 SQUARE
	TEE
	45 DEGREE TEE ENTRY
	TEE CONIC ROUND BRANCH
	CAP
	SPIN-ON CONNECTION
	<b>LAB SERVICES</b>
	DV = DRY VACUUM SPIGOT
	G = GAS SPIGOT

## GENERAL NOTES

ALL EQUIPMENT AND MATERIALS LOCATED IN ANY CONCEALED SPACE USED AS A RETURN AIR PLENUM SHALL CONFORM TO THE REQUIREMENTS OF ONTARIO BUILDING CODE SECTION 3.6.4.3.

THE POTABLE WATER SYSTEM SHALL BE PROTECTED AGAINST BACK SPRINGING FROM ANY MACHINERY OR EQUIPMENT BY A CERTIFIED CAN/CSA B64.10-94 BACKFLOW PREVENTER AS PER THE ONTARIO BUILDING CODE SUBSECTION 7.6.2.

ALL FIRE EXTINGUISHERS TO BE TYPE 3A-10BC

**HAZARD/GROUP DESIGNATION**

ASTERISK ADJACENT TO ROOM NUMBER INDICATES COVERAGE, ALL OTHER AREAS TO BE LIGHT HAZARD COVERAGE WITH A MAXIMUM SQUARE FOOT COVERAGE PER HEAD OF 225 (20.9 SQ. M.)

\* ORDINARY HAZARD GROUP 1  
\*\* ORDINARY HAZARD GROUP 2

NOT ALL SYMBOLS SHOWN ON THIS LEGEND ARE NECESSARILY USED ON THIS PROJECT.

## PIPING DESIGNATIONS

	FUEL OIL SUPPLY		STEAM WITH DETAIL		REFRIGERANT DISCHARGE (HOT GAS)
	FUEL OIL RETURN		HIGH PRESSURE STEAM		REFRIGERANT SUCTION
	FUEL OIL FILL		MEDIUM PRESSURE STEAM		REFRIGERANT LIQUID
	FUEL OIL VENT		LOW PRESSURE STEAM		REFRIGERANT LIQUID OVERFED RETURN
	GLYCOL SUPPLY		CLEAN MEDIUM PRESSURE STEAM		HEATING WATER SUPPLY
	GLYCOL RETURN		CLEAN LOW PRESSURE STEAM		HEATING WATER RETURN
	CONDENSER WATER SUPPLY		HIGH PRESSURE STEAM CONDENSATE		CHILLED WATER SUPPLY
	CONDENSER WATER RETURN		MEDIUM PRESSURE STEAM CONDENSATE		CHILLED WATER RETURN
	COOLING TOWER WATER SUPPLY		LOW PRESSURE STEAM CONDENSATE		DRAIN
	COOLING TOWER WATER RETURN		PUMPED CONDENSATE		DUAL TEMPERATURE SUPPLY
	HEAT PUMP WATER SUPPLY		BOILER BLOW DOWN		DUAL TEMPERATURE RETURN
	HEAT PUMP WATER RETURN		BOILER FEED WATER		

## FIRE PROTECTION

	PENDENT SPRINKLER		PENDENT SPRINKLER REMOVE / RELOCATE
	RECESSED SPRINKLER		RECESSED SPRINKLER REMOVE / RELOCATE
	UPRIGHT SPRINKLER		UPRIGHT SPRINKLER REMOVE / RELOCATE
	SIDE WALL SPRINKLER		SIDE WALL SPRINKLER REMOVE / RELOCATE
	CONCEALED SPRINKLER		CONCEALED SPRINKLER REMOVE / RELOCATE
	DRY PENDENT SPRINKLER		DRY PENDENT SPRINKLER REMOVE / RELOCATE
	PRE-ACTION		PRE-ACTION REMOVE / RELOCATE
	FIRE HOSE CABINET		FIRE DEPARTMENT PUMP CONNECTION
	SURFACE FIRE EXTINGUISHER		FIRE DEPARTMENT TEST CONNECTION
	CABINET FIRE EXTINGUISHER		FIRE HYDRANT
	SUPERVISED VALVE		POST INDICATOR VALVE
	FIRE SUPPLY		WET SYSTEM ALARM VALVE
	FIRE STANDPIPE		DRY SYSTEM ALARM VALVE
	DRY SPRINKLER LINE		PRE-ACTION SYSTEM ALARM VALVE
	WET SPRINKLER LINE		
	NEW/RELOCATED SPRINKLER HEAD		EXISTING SPRINKLER HEAD

## MEDICAL GAS

	ZONE VALVE
	MANUAL VALVE
	NON RETURN VALVE
	TERMINAL UNIT
	LOCAL EMERGENCY ALARM
	ALARM SENSOR
	VACUUM BREAKER
	INVERTED BUCKET STEAM TRAP
	FLOAT AND THERMOSTATIC STEAM TRAP
	THERMOSTATIC STEAM TRAP, BIMETALLIC AND BELLOW
	THERMODYNAMIC (DISK) STEAM TRAP
	CYLINDER VALVE WITH RELIEF
	HIGH PRESSURE CYLINDER

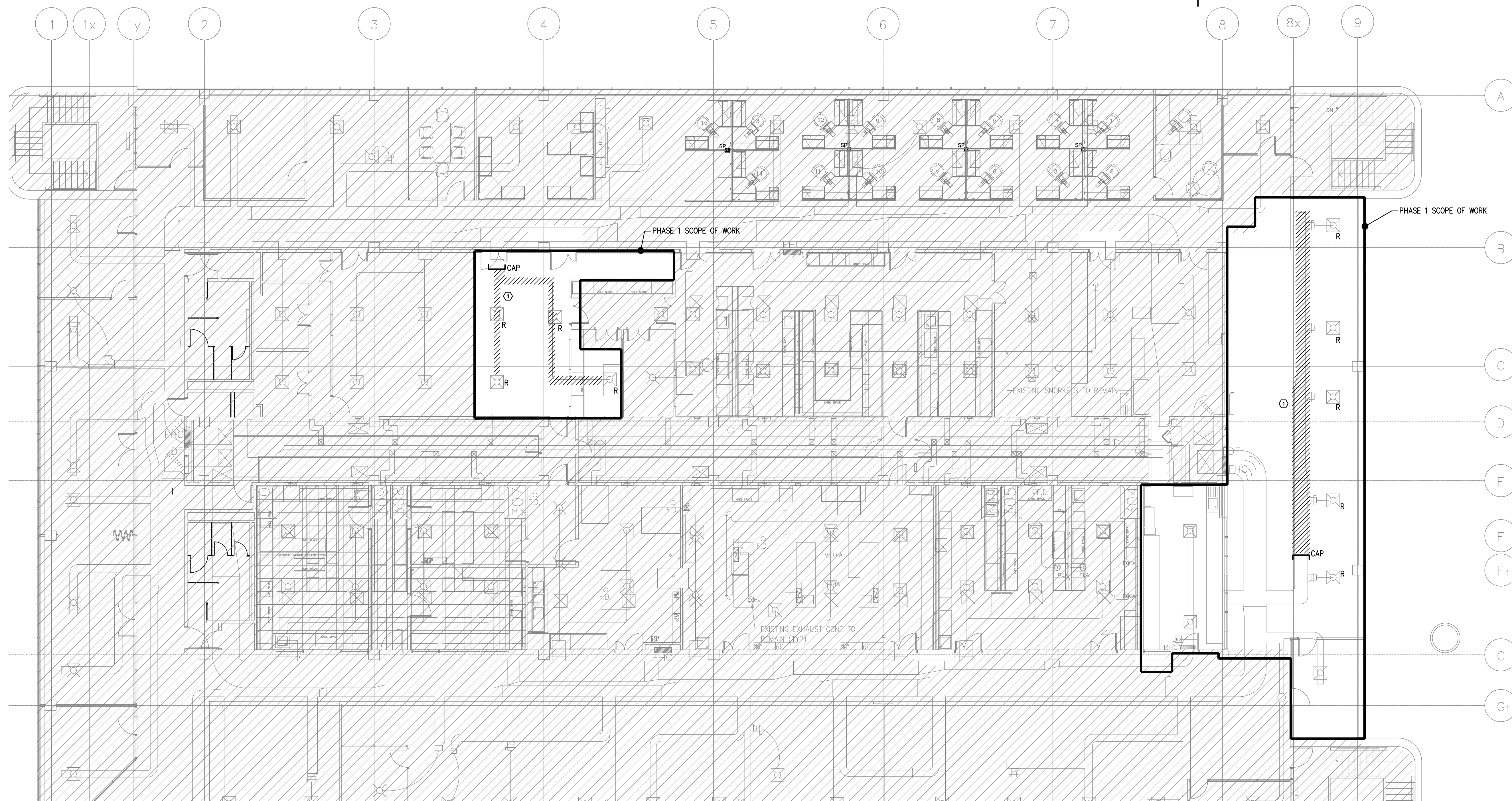
## DRAWING SYMBOLS

	SECTION NUMBER
	SHEET NUMBER
	DETAIL NUMBER
	SHEET NUMBER

04		
03		
02		
01	ISSUED FOR TENDER	19.12.2014
revision		date

Do not scale drawings.  
Verify all dimensions and conditions on site and immediately notify the Departmental Representative of all discrepancies.

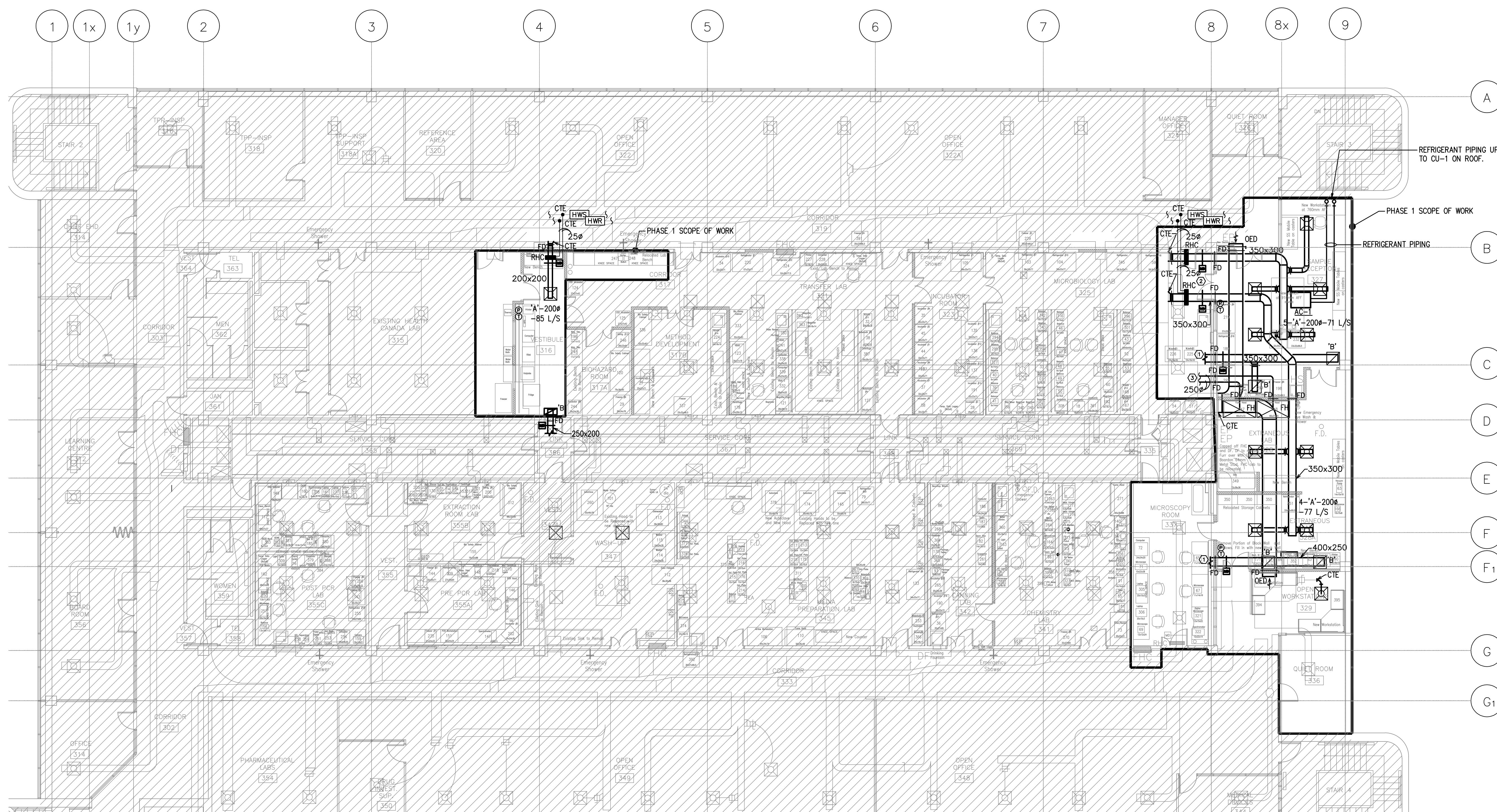
A	Detail No.
B	No. du détail
C	drawing no. - where detail required
	dessin no. - où détail requis
	drawing no. - where detailed
	dessin no. - où détaillé



## DEMOLITION NOTES:

- ① REMOVE EXISTING DUCTWORK AND CAP.

1 LEVEL 3 - HVAC DEMOLITION PLAN - PHASE 1  
M-2.01



## CONSTRUCTION NOTES:

- ① CONNECT NEW SHEET METAL EXHAUST DUCTS TO LAB GENERAL EXHAUST SERVICE IN SERVICE CORE.  
② ALL NEW SUPPLY DUCTWORK TO BE EXTERNALLY INSULATED.  
③ ROUTE NEW 250R STAINLESS STEEL FUMEHOOD EXHAUST DUCTS TO WALL AT GRIDLINE 8 FOR FUTURE CONNECTION TO EXISTING IN PHASE #2.

2 LEVEL 3 - HVAC PLAN - PHASE 1  
M-2.02

## GENERAL NOTES:

1. THIS DRAWING SHALL BE READ IN CONJUNCTION WITH ARCHITECTURAL DRAWINGS.  
2. CONTRACTOR AND ALL SUB-TRADES ARE RESPONSIBLE TO BE FAMILIAR WITH AND COMPLY WITH ALL ITEMS NOTED IN SEPARATE SPECIFICATION. FAILURE TO DO SO WILL RESULT IN CONTRACTOR CORRECTING ANY DEFICIENCY AT OWN EXPENSE.



04		
03		
02		
01	ISSUED FOR TENDER	19.12.2014
revision		date

Do not scale drawings.  
Verify all dimensions and conditions on site and immediately notify the Departmental Representative of all discrepancies.

A	Detail No.
B	No. du détail
C	drawing no. - where detail required
	desain no. - où détail requis
	drawing no. - where detailed
	desain no. - où détaillé

project title  
titre du projet  
SCARBOROUGH Ontario  
HEALTH CANADA BUILDING  
2301 MIDLAND AVENUE  
CFIA GTA LABORATORY  
EXPANSION AND FIT-UP

drawing title  
titre du dessin  
LEVEL 3 HVAC PLAN  
DEMOLITION AND NEW WORK  
PHASE 1

drawn by  
dessiné par  
D.R.

designed by  
conçue par  
D.R.

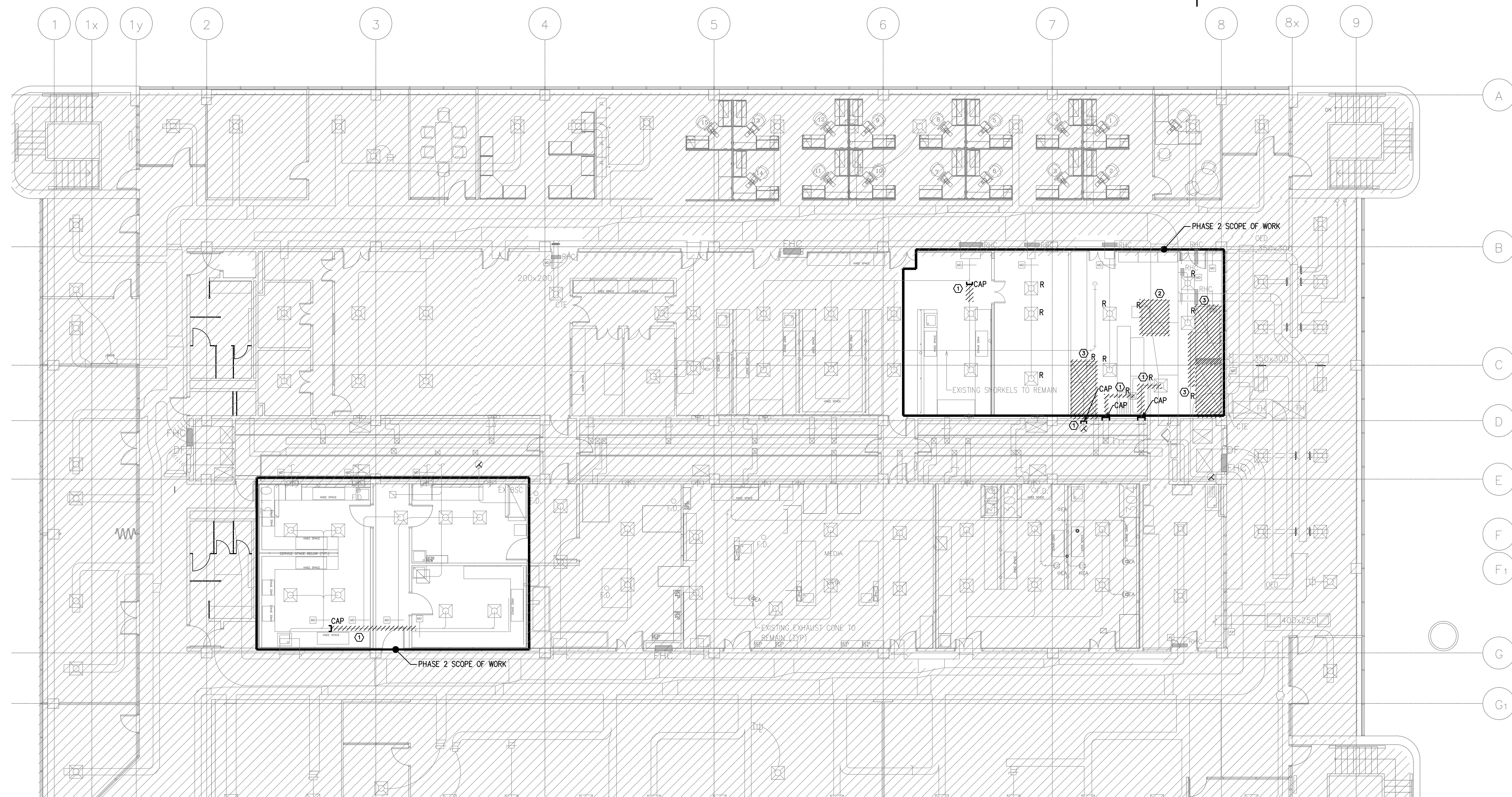
approved by  
approuvé par  
J.S.

bid  
offre  
project manager  
administrateur de projet

project date  
date du projet  
2014-07-24

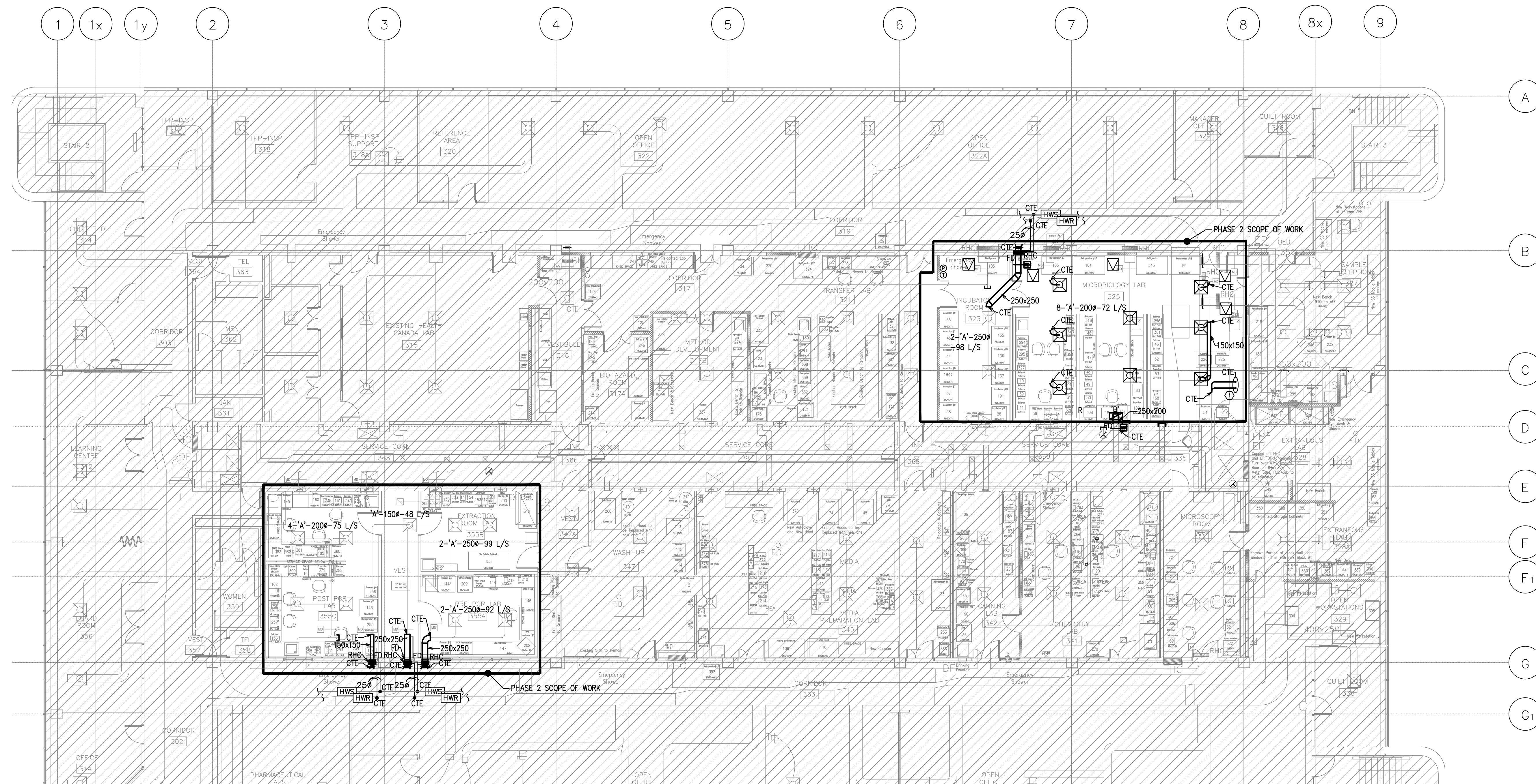
project no.  
no. du projet  
R.061999.001

drawing no.  
dessiné no.  
M-2.01



## DEMOLITION NOTES:

- ① REMOVE EXISTING DUCTWORK AND CAP.
- ② EXISTING ABANDONED EXHAUST CANOPY TO BE REMOVED
- ③ REMOVE EXISTING FUMEHOODS AND CAP SERVICES.

1 LEVEL 3 - HVAC DEMOLITION PLAN - PHASE 2  
W-209

## CONSTRUCTION NOTES:

- ① CONNECT TO EXISTING 250# CAPPED STAINLESS STEEL DUCTS.
- ② ALL SUPPLY DUCTWORK TO BE EXTERNALLY INSULATED.

2 LEVEL 3 - HVAC PLAN - PHASE 2  
W-209

04		
03		
02		
01	ISSUED FOR TENDER	19.12.2014
revision		date

Do not scale drawings.  
Verify all dimensions and conditions on site and immediately  
notify the Departmental Representative of all discrepancies.

A	Detail No.
B	No. du détail
C	drawing no. - where detail required
D	dessin no. - où détail requis

project title  
titre du projet  
SCARBOROUGH Ontario  
HEALTH CANADA BUILDING  
2301 MIDLAND AVENUE  
CFIA GTA LABORATORY  
EXPANSION AND FIT-UP

drawing title  
titre du dessin  
LEVEL 3 HVAC PLAN  
DEMOLITION AND NEW WORK  
PHASE 2

drawn by  
dessiné par  
D.R.

designed by  
conçu par  
D.R.

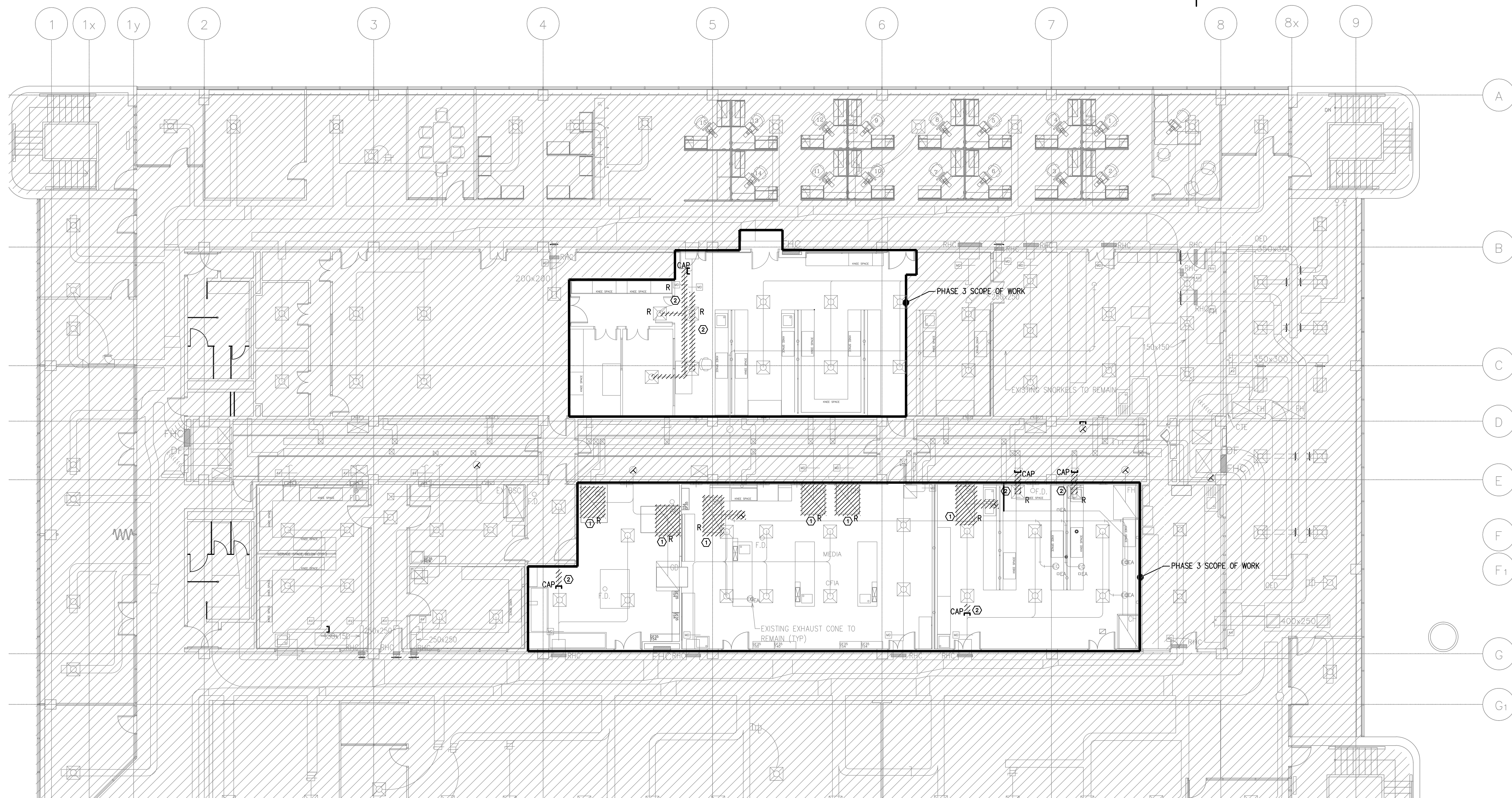
approved by  
approuvé par  
J.S.

by  
office  
project manager  
administrateur de projet

project date  
date du projet  
2014-12-19

project no.  
no. du projet  
R.061999.001

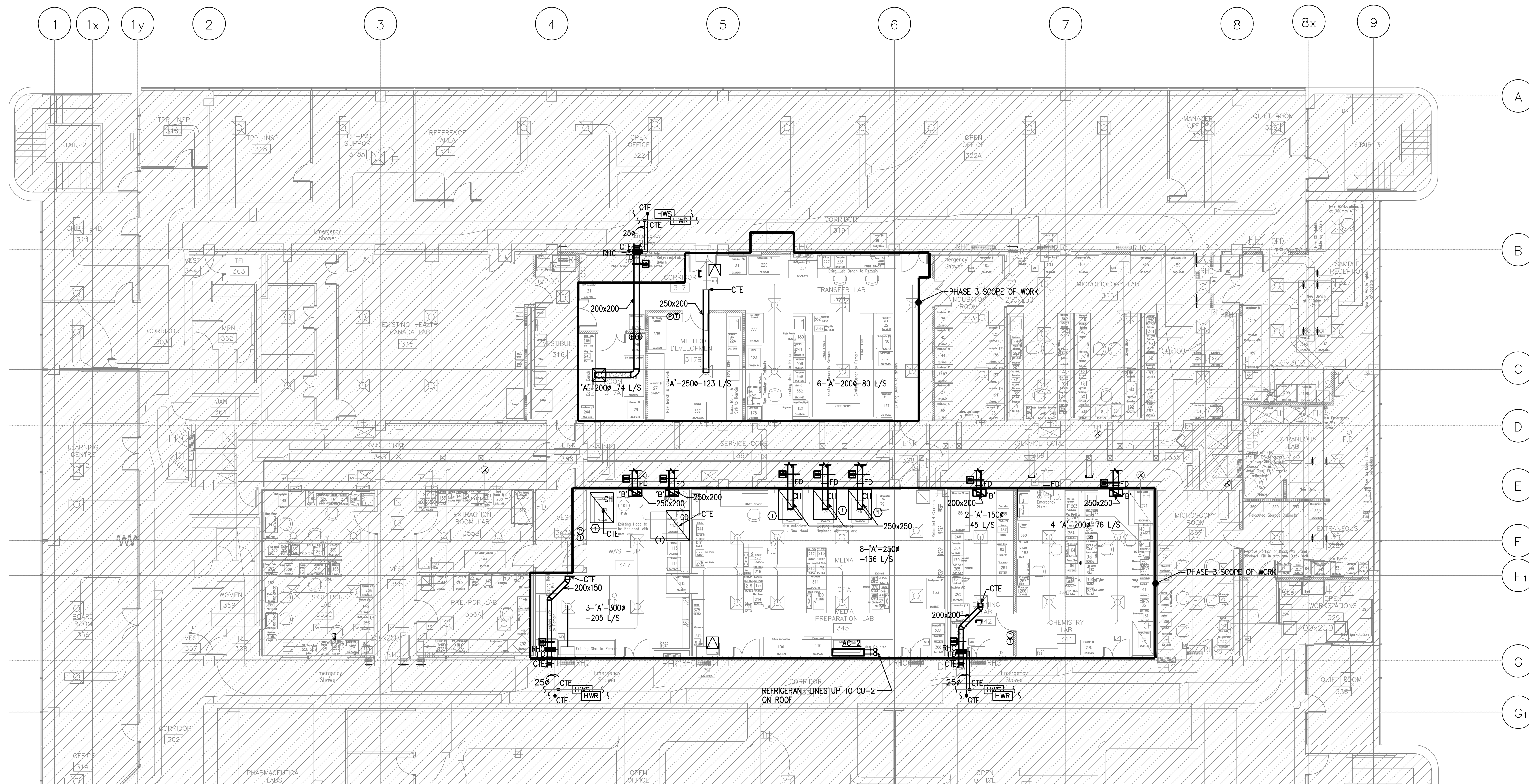
drawing no.  
dessiné no.  
M-2.02



## DEMOLITION NOTES:

- ① EXISTING ABANDONED EXHAUST CANOPY TO BE REMOVED  
② REMOVE EXISTING DUCTWORK AND CAP.

1  
W-203  
LEVEL 3 - HVAC DEMOLITION PLAN - PHASE 3



## CONSTRUCTION NOTES:

- ① NEW EXHAUST CANOPY HOODS. REFER TO CANOPY ELEVATION/CONNECTION DETAIL FOR FURTHER INFORMATION.  
② ALL SUPPLY DUCTWORK TO BE EXTERNALLY INSULATED.

2  
W-203  
LEVEL 3 - HVAC PLAN - PHASE 3

## GENERAL NOTES:

1. THIS DRAWING SHALL BE READ IN CONJUNCTION WITH ARCHITECTURAL DRAWINGS.  
2. CONTRACTOR AND ALL SUB-TRADES ARE RESPONSIBLE TO BE FAMILIAR WITH AND COMPLY WITH ALL ITEMS NOTED IN SEPARATE SPECIFICATION. FAILURE TO DO SO WILL RESULT IN CONTRACTOR CORRECTING ANY DEFICIENCY AT OWN EXPENSE.



04		
03		
02		
01	ISSUED FOR TENDER	19.12.2014
revision		date

Do not scale drawings.  
Verify all dimensions and conditions on site and immediately  
notify the Departmental Representative of all discrepancies.

A	Detail No.
B	No. du détail
C	drawing no. - where detail required
D	dessin no. - où détail requis

project title  
titre du projet  
SCARBOROUGH Ontario  
HEALTH CANADA BUILDING  
2301 MIDLAND AVENUE  
CFIA GTA LABORATORY  
EXPANSION AND FIT-UP

drawing title  
titre du dessin  
LEVEL 3 HVAC PLAN  
DEMOLITION AND NEW WORK  
PHASE 3

drawn by  
dessiné par  
D.R.

designed by  
conçu par  
D.R.

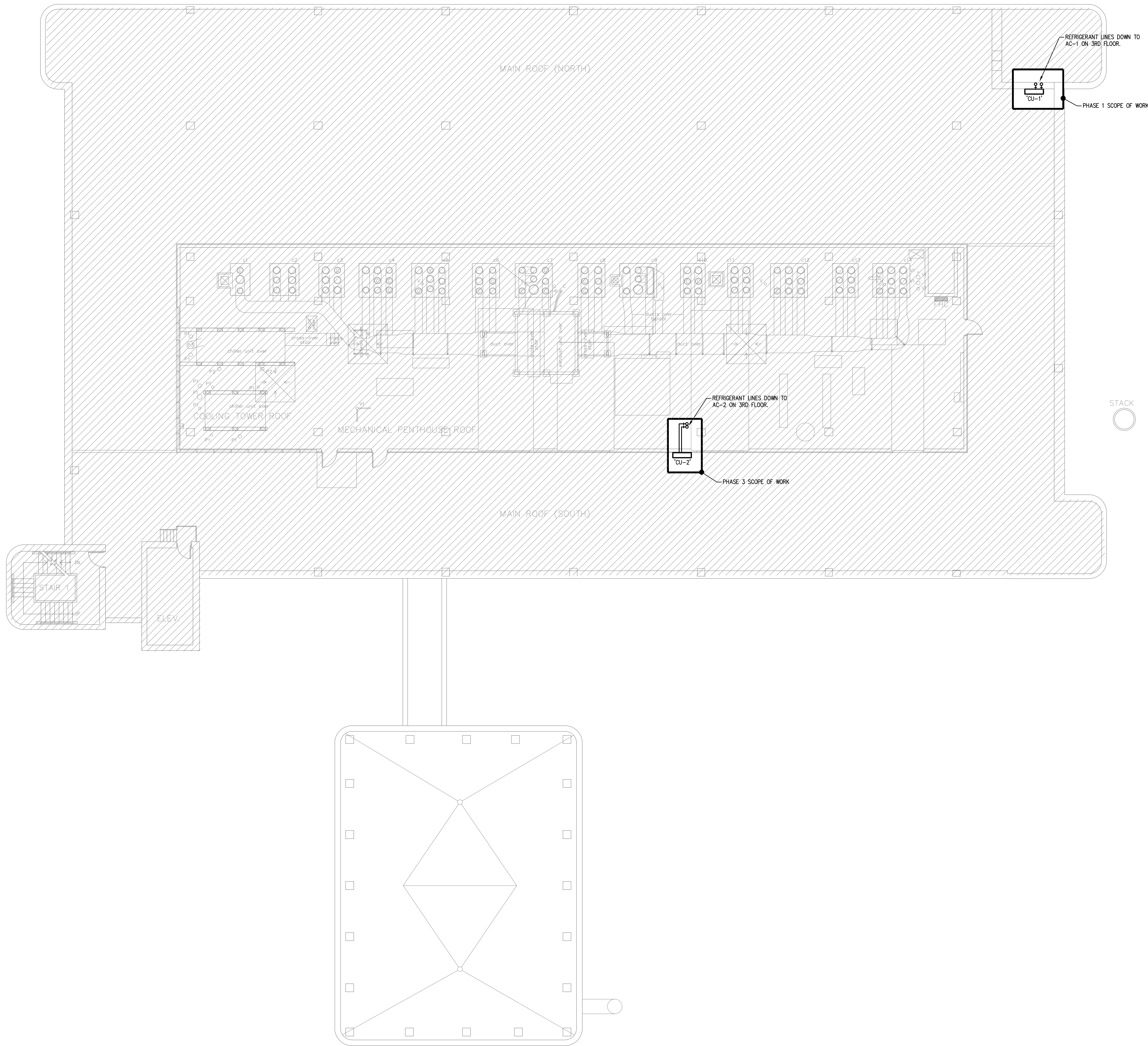
approved by  
approuvé par  
J.S.

bid  
offre  
project manager  
administrateur de projet

project date  
date du projet  
2014-12-19

project no.  
no. du projet  
R.061999.001

drawing no.  
dessiné no.  
M-2.03



GENERAL NOTES:  
1. THIS DRAWING SHALL BE READ IN CONJUNCTION WITH ARCHITECTURAL DRAWINGS.  
2. CONTRACTOR AND ALL SUB-TRADES ARE RESPONSIBLE TO BE FAMILIAR WITH AND COMPLY WITH ALL ITEMS NOTED IN SEPARATE SPECIFICATION. FAILURE TO DO SO WILL RESULT IN CONTRACTOR CORRECTING ANY DEFICIENCY AT OWN EXPENSE.

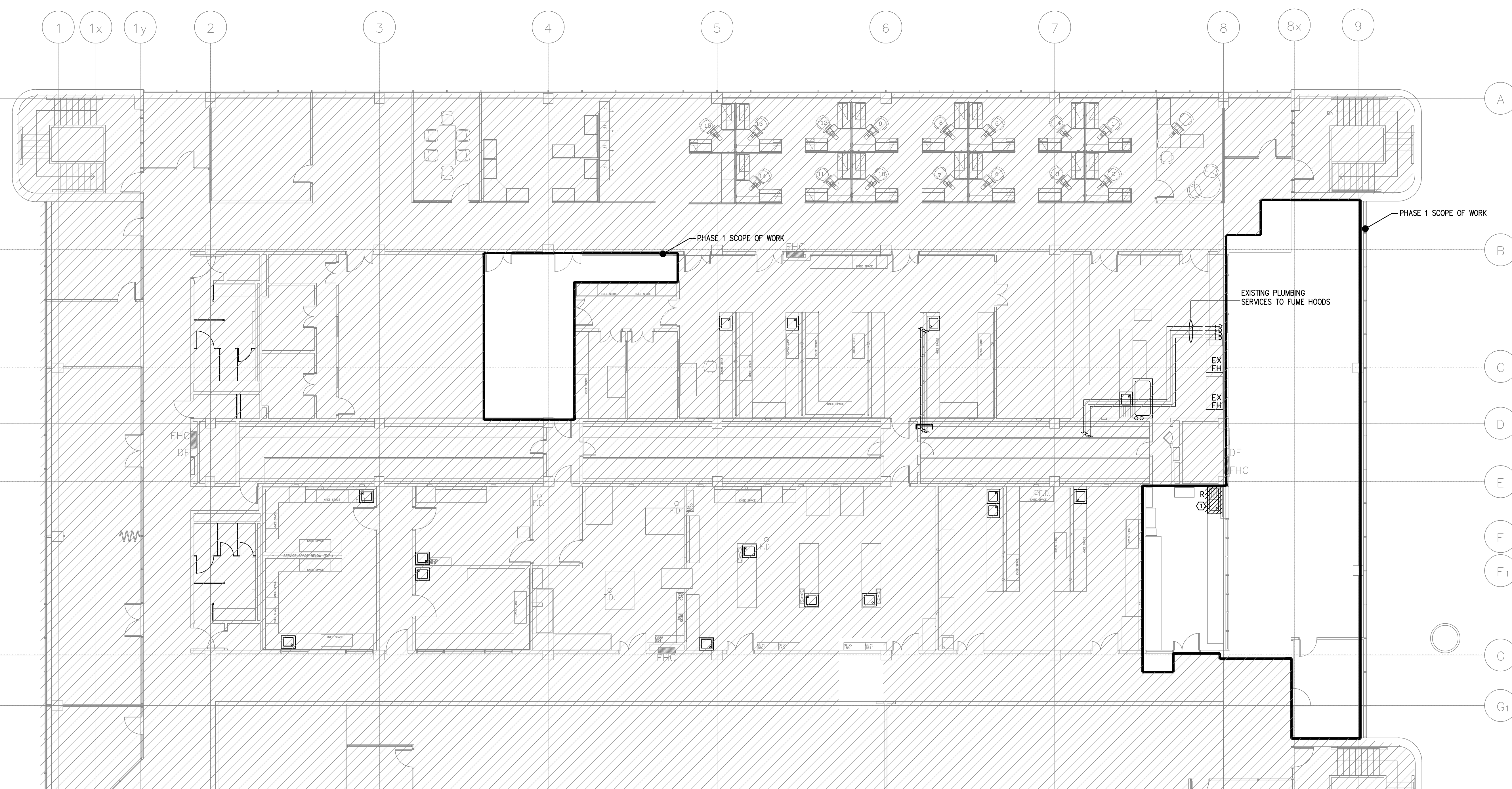


04		
03		
02		
01	ISSUED FOR TENDER	19.12.2014
revision		date

Do not scale drawings.  
Verify all dimensions and conditions on site and immediately notify the Departmental Representative of all discrepancies.

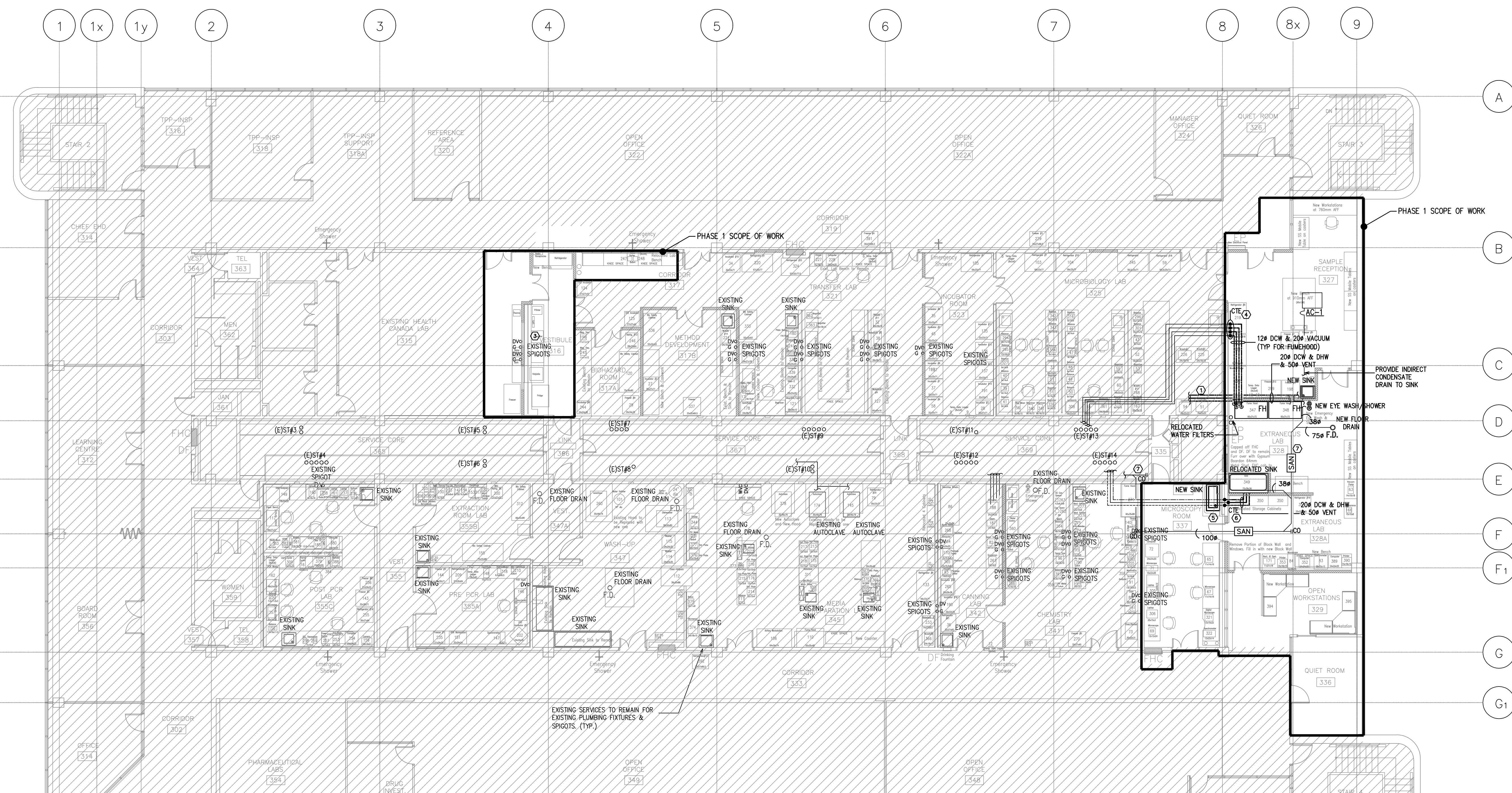
A	Detail No.
B	No. du détail
C	drawing no. - where detail required
	dessin no. - où détail requis
	drawing no. - where detailed
	dessin no. - où détaillé

project title titre du projet	SCARBOROUGH Ontario
HEALTH CANADA BUILDING 2301 MIDLAND AVENUE CFIA GTA LABORATORY EXPANSION AND FIT-UP	
drawing title titre du dessin	ROOF HVAC PLAN
drawn by dessiné par	D.R.
designed by conçu par	D.R.
approved by approuvé par	J.S.
bid offre	project manager administrateur de projets
project date date du projet	2014-07-24
project no. no. du projet	R.061999.001
drawing no. dessiné no.	M-2.04

1 LEVEL 3 - PLUMBING DEMOLITION PLAN - PHASE 1  
W-309

## DEMOLITION NOTES:

- ① EXISTING SINK TO BE REMOVED AND REPLACED.

2 LEVEL 3 - PLUMBING PLAN - PHASE 1  
W-309

## CONSTRUCTION NOTES:

- ① CONNECT NEW DOW, DHW, VENT AND DRAIN PIPING TO NEAREST STACK IN SERVICE CORRIDOR.
- ② PROVIDE NEW LABORATORY SERVICES CONNECTED FROM EXISTING STACK TO BENCH SPIGOTS. (EXISTING STACKS CONSIST OF REVERSE OSMOSIS WATER, NATURAL GAS, COMPRESSED AIR, VACUUM, DOM, COLD/HOT WATER, STEAM AND SANITARY DRAIN.
- ③ EXISTING LABORATORY PIPING ROUTED IN BENCH SERVICE SPACE TO SPIGOT/SINKS.
- ④ EXTEND EXISTING FUMEHOOD PLUMBING SERVICES TO NEW FUMEHOOD LOCATIONS AND RECONNECT.
- ⑤ SINK TO BE CONNECTED UP TO EXISTING SERVICES.
- ⑥ EXTEND EXISTING DOW/DHW SERVICES FROM CEILING SPACE TO RELOCATED SINK IN EXTRANEOUS LAB 328A.
- ⑦ NEW 100% SANITARY TO BE ROUTED IN 2ND FLOOR CEILING SPACE TO (E) STACK 14 & CONNECTED TO EXISTING SANITARY RISER.

## GENERAL NOTES:

1. THIS DRAWING SHALL BE READ IN CONJUNCTION WITH ARCHITECTURAL DRAWINGS.
2. CONTRACTOR AND ALL SUB-TRADES ARE RESPONSIBLE TO BE FAMILIAR WITH AND COMPLY WITH ALL ITEMS NOTED IN SEPARATE SPECIFICATION. FAILURE TO DO SO WILL RESULT IN CONTRACTOR CORRECTING ANY DEFICIENCY AT OWN EXPENSE.



04		
03		
02		
01	ISSUED FOR TENDER	19.12.2014
revision		date

Do not scale drawings.  
Verify all dimensions and conditions on site and immediately notify the Departmental Representative of all discrepancies.

A	Detail No.
B	No. du détail
C	drawing no. - where detail required
	dessin no. - où détail requis
	drawing no. - where detailed
	dessin no. - où détaillé

project title  
titre du projet  
SCARBOROUGH Ontario  
HEALTH CANADA BUILDING  
2301 MIDLAND AVENUE  
CFIA GTA LABORATORY  
EXPANSION AND FIT-UP

drawing title  
titre du dessin  
LEVEL 3 PLUMBING PLAN  
PHASE 1

drawn by  
dessiné par  
D.R.

designed by  
conçu par  
D.R.

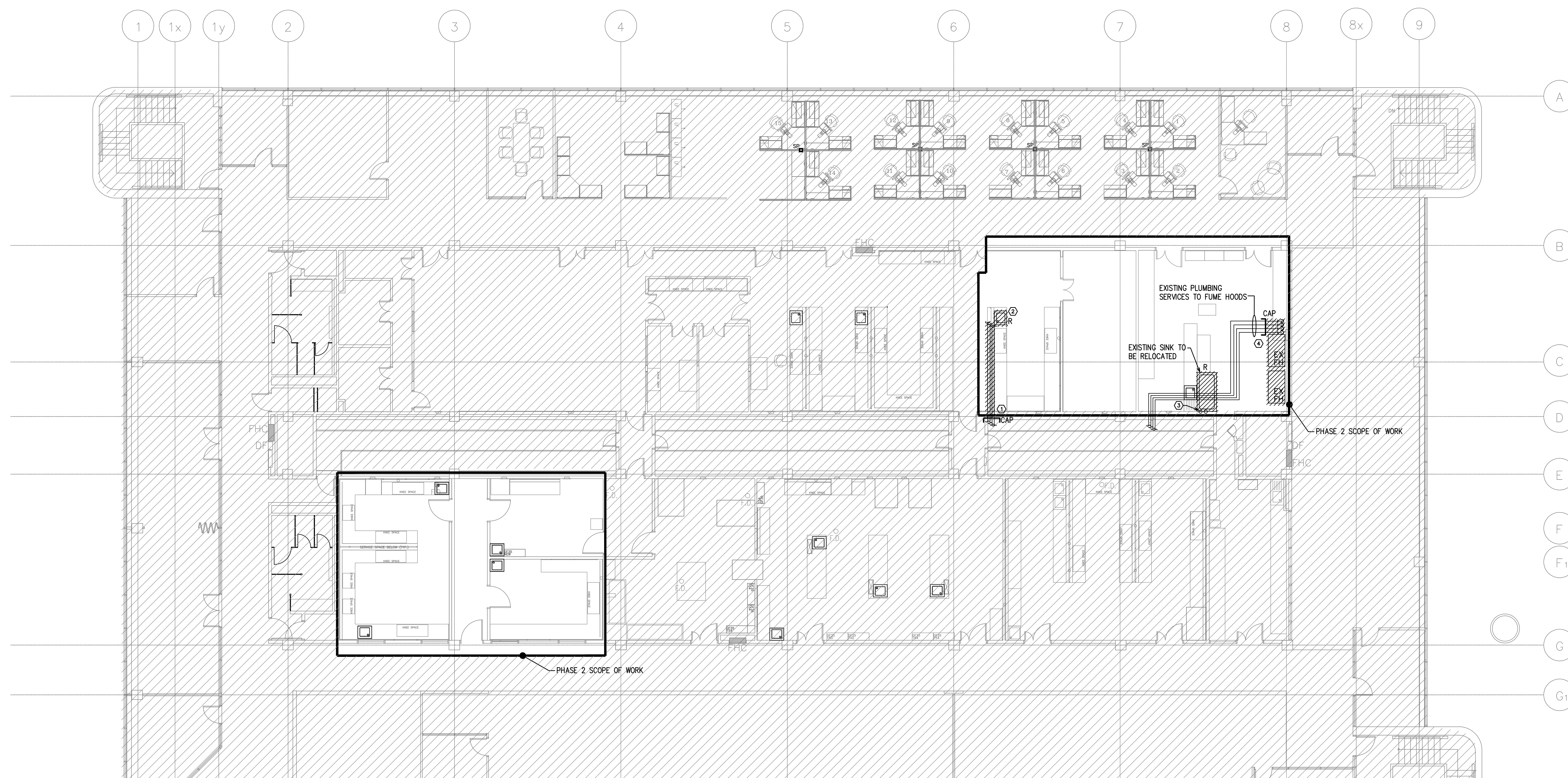
approved by  
approuvé par  
J.S.

bid  
offre  
project manager  
administrateur de projet

project date  
date du projet  
2014-12-19

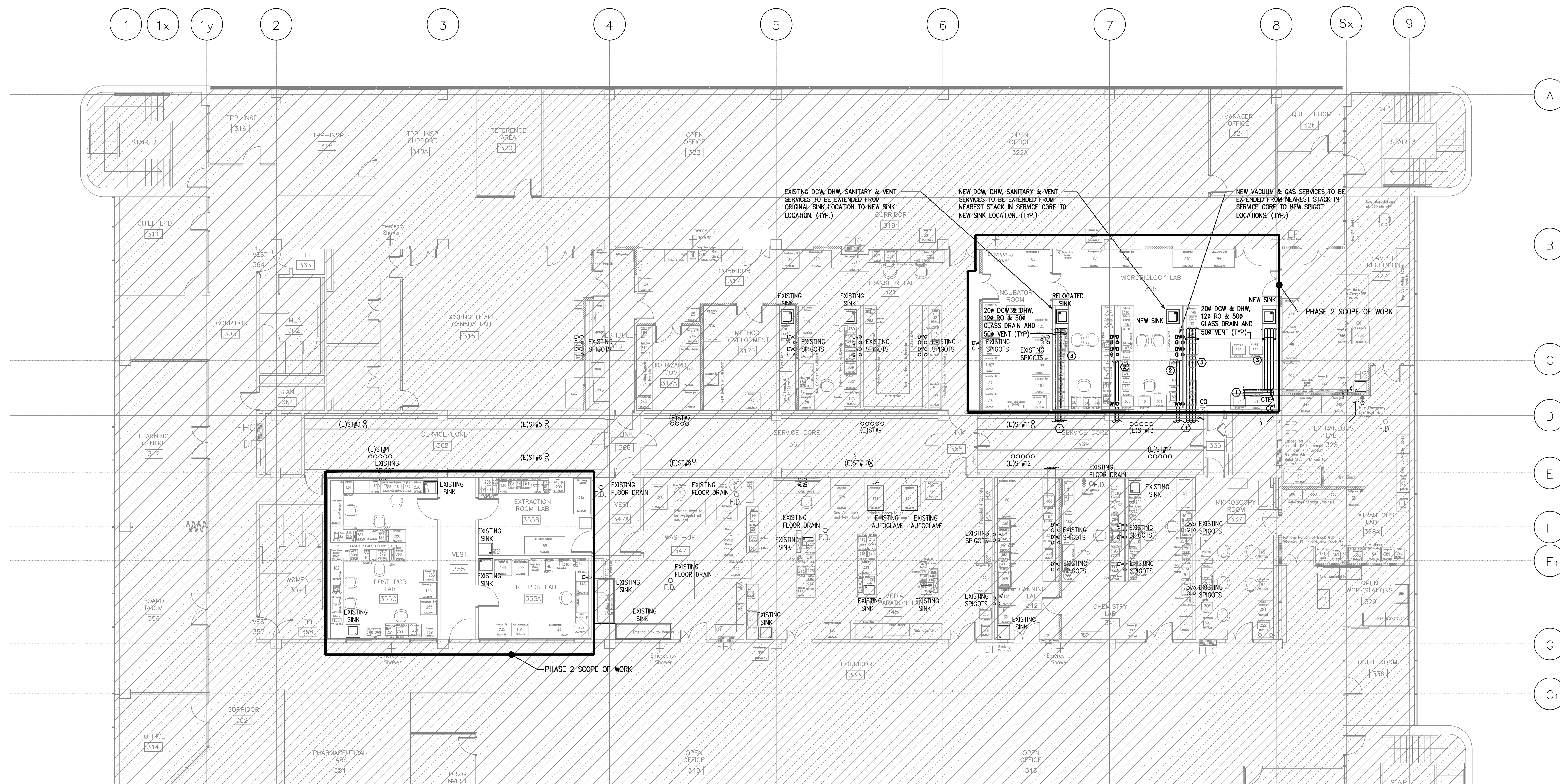
project no.  
no. du projet  
R.061999.001

drawing no.  
dessiné no.  
M-3.01

1 LEVEL 3 - PLUMBING DEMOLITION PLAN - PHASE 2  
M-302

## DEMOLITION NOTES:

- ① CUT BACK EXISTING PLUMBING SERVICES TO SERVICE CORE AND CAP AT RISERS.
- ② EXISTING SINK TO BE RELOCATED.
- ③ EXISTING WATER FILTERS TO BE RELOCATED. CUT BACK AND CAP SERVICES IN SERVICE CORE.
- ④ CUT BACK AND CAP EXISTING FUMEHOOD SERVICES IN EXISTING EXTRANEOUS LAB CEILING SPACE.

2 LEVEL 3 - PLUMBING PLAN - PHASE 2  
M-303

## CONSTRUCTION NOTES:

- ① CONNECT NEW DCH, DHW, VENT AND DRAIN PIPING TO NEAREST STACK IN SERVICE CORRIDOR.
- ② PROVIDE NEW LABORATORY SERVICES CONNECTED FROM EXISTING STACK TO BENCH SPIGOTS. (EXISTACKS CONSIST OF REVERSE OSMOSIS WATER, NATURAL GAS, COMPRESSED AIR, VACUUM, DOM. COLD/HOT WATER, STEAM AND SANITARY DRAIN.)
- ③ LABORATORY PIPING ROUTED IN BENCH SERVICE SPACE TO SPIGOT/SINKS AS INDICATED.

## GENERAL NOTES:

1. THIS DRAWING SHALL BE READ IN CONJUNCTION WITH ARCHITECTURAL DRAWINGS.
2. CONTRACTOR AND ALL SUB-TRADES ARE RESPONSIBLE TO BE FAMILIAR WITH AND COMPLY WITH ALL ITEMS NOTED IN SEPARATE SPECIFICATION. FAILURE TO DO SO WILL RESULT IN CONTRACTOR CORRECTING ANY DEFICIENCY AT OWN EXPENSE.



04		
03		
02		
01	ISSUED FOR TENDER	19.12.2014
revision		date

Do not scale drawings.  
Verify all dimensions and conditions on site and immediately  
notify the Departmental Representative of all discrepancies.

A	Detail No.
B	No. du détail
C	drawing no. - where detail required
D	dessin no. - où détail requis

project title  
titre du projet  
SCARBOROUGH Ontario  
HEALTH CANADA BUILDING  
2301 MIDLAND AVENUE  
CFIA GTA LABORATORY  
EXPANSION AND FIT-UP

drawing title  
titre du dessin  
LEVEL 3 PLUMBING PLAN  
PHASE 2

drawn by  
dessiné par  
D.R.

designed by  
conçu par  
D.R.

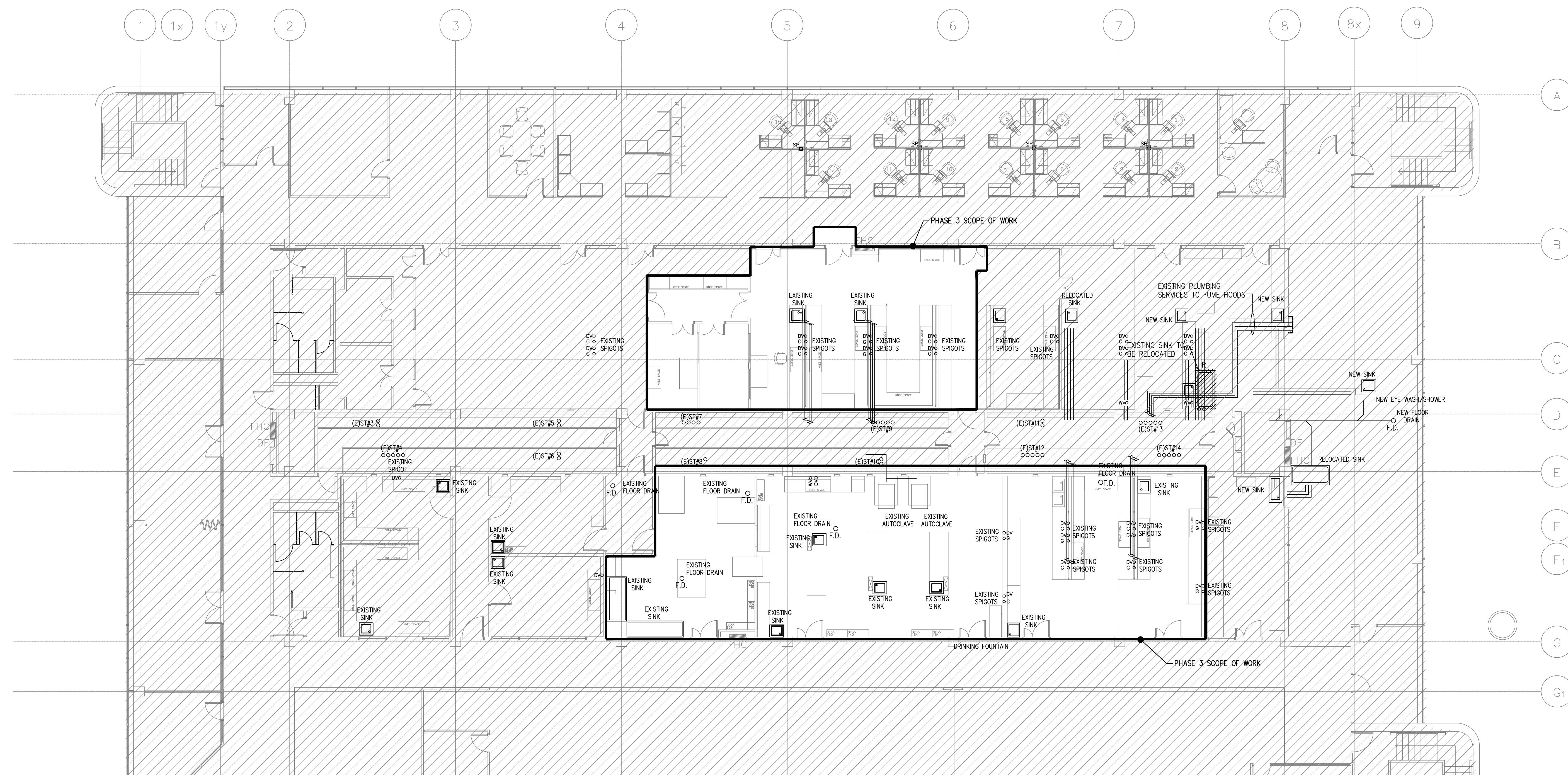
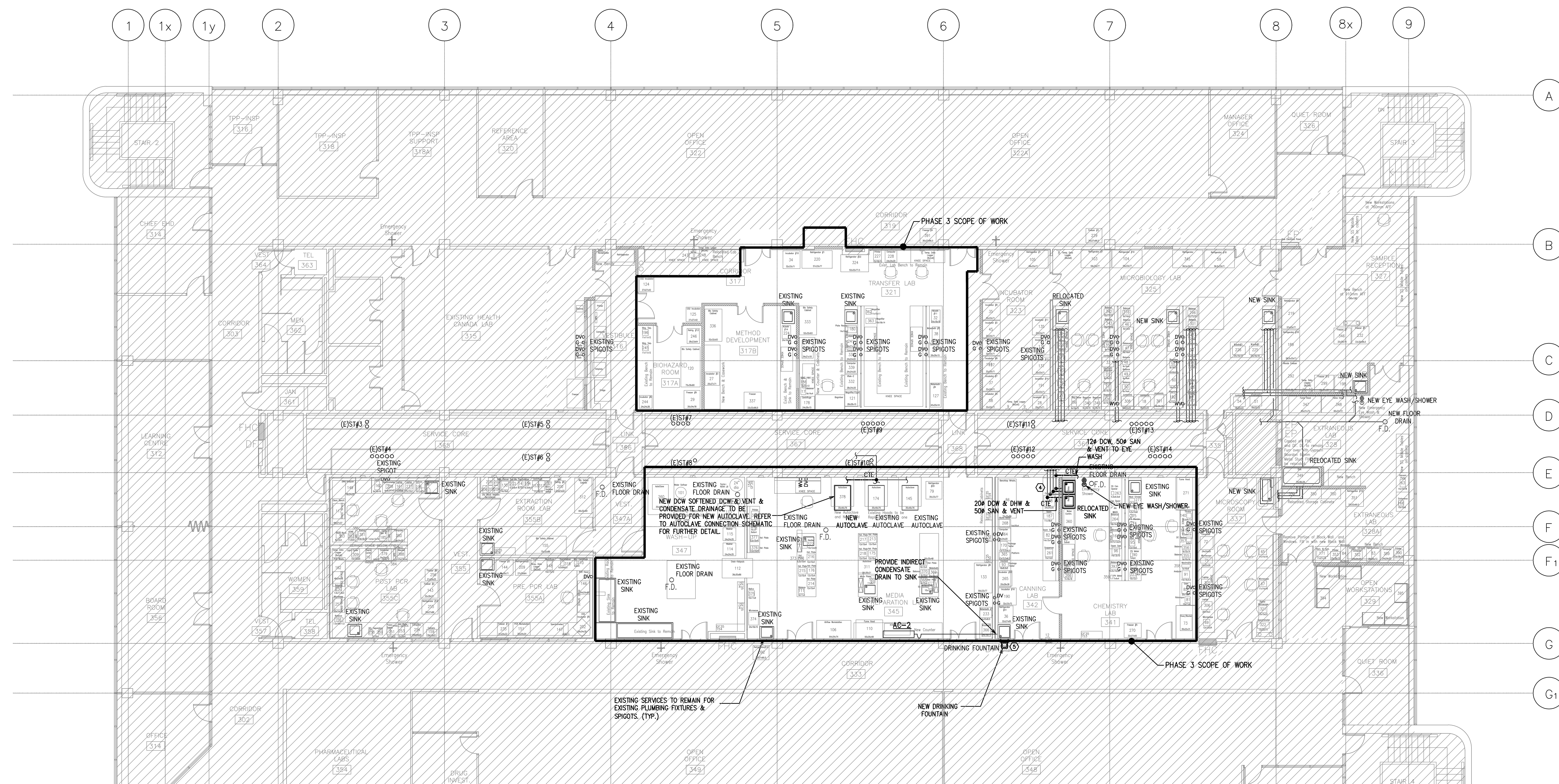
approved by  
approuvé par  
J.S.

bid  
offre  
project manager  
administrateur de projet

project date  
date du projet  
2014-12-19

project no.  
no. du projet  
R.061999.001

drawing no.  
dessiné no.  
M-3.02

1 LEVEL 3 - PLUMBING DEMOLITION PLAN - PHASE 3  
M-3032 LEVEL 3 - PLUMBING PLAN - PHASE 3  
M-304

## CONSTRUCTION NOTES:

- ① CONNECT NEW DCH, DHW, VENT AND DRAIN PIPING TO NEAREST STACK IN SERVICE CORRIDOR.
- ② PROVIDE NEW LABORATORY SERVICES CONNECTED FROM EXISTING STACK TO BENCH SPOOTS. (E)STACKS CONSIST OF REVERSE OSMOSIS WATER, NATURAL GAS, COMPRESSED AIR, VACUUM, DOM. COLD/HOT WATER, STEAM AND SANITARY DRAIN.
- ③ LABORATORY PIPING ROUTED IN BENCH SERVICE SPACE TO SPOOT/SINKS AS INDICATED.
- ④ REROUTE EXISTING PLUMBING SERVICES TO NEW SINK LOCATION.
- ⑤ EXTEND DCH/DRAIN SERVICES FROM EXISTING SINK TO NEW DRINKING FOUNTAIN.

## GENERAL NOTES:

1. THIS DRAWING SHALL BE READ IN CONJUNCTION WITH ARCHITECTURAL DRAWINGS.
2. CONTRACTOR AND ALL SUB-TRADES ARE RESPONSIBLE TO BE FAMILIAR WITH AND COMPLY WITH ALL ITEMS NOTED IN SEPARATE SPECIFICATION. FAILURE TO DO SO WILL RESULT IN CONTRACTOR CORRECTING ANY DEFICIENCY AT OWN EXPENSE.



04		
03		
02		
01	ISSUED FOR TENDER	19.12.2014
revision		date

Do not scale drawings.  
Verify all dimensions and conditions on site and immediately  
notify the Departmental Representative of all discrepancies.

A	Detail No.
B	No. du détail
C	drawing no. - où détail requis
D	drawing no. - où détail requis

project title  
titre du projet  
SCARBOROUGH Ontario  
HEALTH CANADA BUILDING  
2301 MIDLAND AVENUE  
CFIA GTA LABORATORY  
EXPANSION AND FIT-UP

drawing title  
titre du dessin  
LEVEL 3 PLUMBING PLAN  
PHASE 3

drawn by  
dessiné par D.R.

designed by  
conçu par D.R.

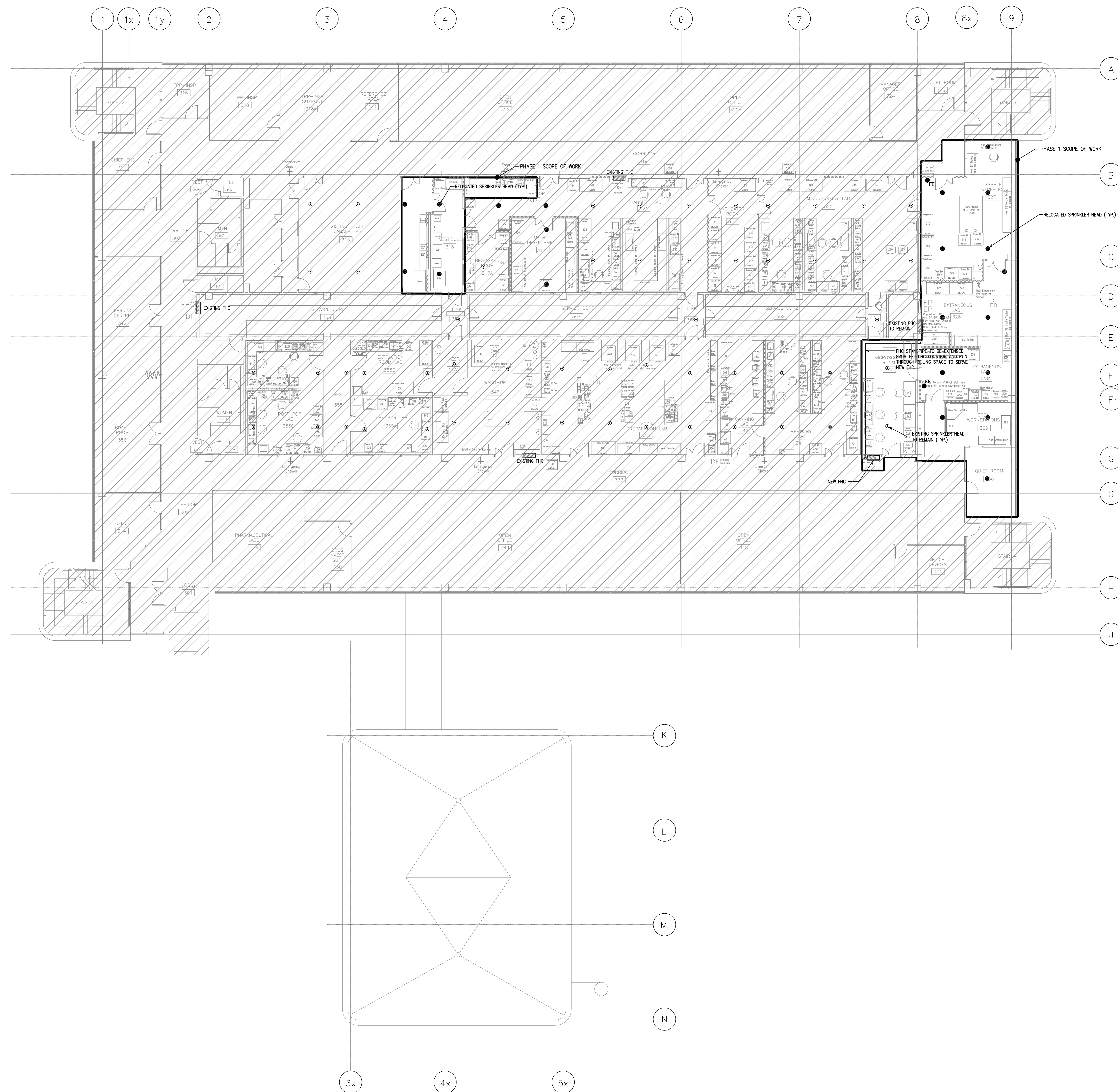
approved by  
approuvé par J.S.

bid  
offre project manager  
administrateur de projet

project date  
date du projet 2014-12-19

project no.  
no. du projet R.061999.001

drawing no.  
dessiné no. M-3.03



04		
03		
02		
01	ISSUED FOR TENDER	19.12.2014
revision		date

Do not scale drawings.  
Verify all dimensions and conditions on site and immediately  
notify the Departmental Representative of all discrepancies.

A	Detail No.
B	No. du détail
C	drawing no. - where detail required dessin no. - où détail requis
D	drawing no. - where detailed dessin no. - où détaillé

project title  
titre du projet  
SCARBOROUGH Ontario  
HEALTH CANADA BUILDING  
2301 MIDLAND AVENUE  
CFIA GTA LABORATORY  
EXPANSION AND FIT-UP

drawing title  
titre du dessin  
LEVEL 3 FIRE PROTECTION  
PLAN - PHASE 1

drawn by  
dessiné par  
D.R.

designed by  
conçu par  
D.R.

approved by  
approuvé par  
J.S.

bid  
offre  
project manager  
administrateur de projet

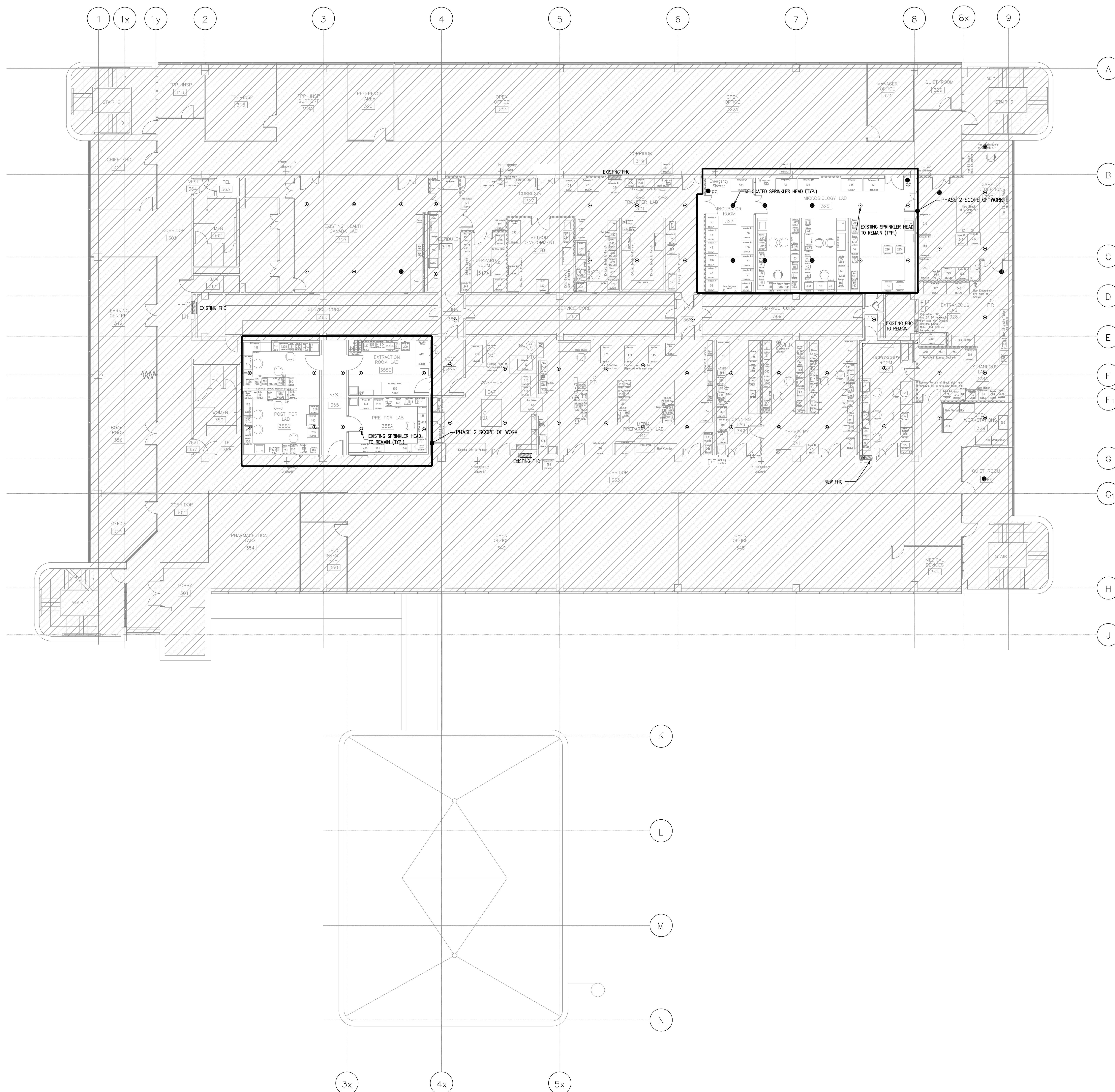
project date  
date du projet  
2014-12-19

project no.  
no. du projet  
R.061999.001

drawing no.  
dessiné no.  
M-4.01


## GENERAL NOTES:

- THIS DRAWING SHALL BE READ IN CONJUNCTION WITH ARCHITECTURAL DRAWINGS.
- CONTRACTOR AND ALL SUB-TRADES ARE RESPONSIBLE TO BE FAMILIAR WITH AND COMPLY WITH ALL ITEMS NOTED IN SEPARATE SPECIFICATION. FAILURE TO DO SO WILL RESULT IN CONTRACTOR CORRECTING ANY DEFICIENCY AT OWN EXPENSE.



04		
03		
02		
01	ISSUED FOR TENDER	19.12.2014
revision		date



 **A** Detail No.  
No. du détail

**B** drawing no. — where detail required  
dessin no. — où détail exigé

**C** drawing no. — where detailed  
dessin no. — où détaillé

project title  
titre du projet

SCARBOROUGH

Ontario

HEALTH CANADA BUILDING  
2301 MIDLAND AVENUE  
CFIA GTA LABORATORY  
EXPANSION AND FIT-UP

drawing title  
titre du dessin

drawn by  
dessine par D.R.

designed by  
conc par D.R.

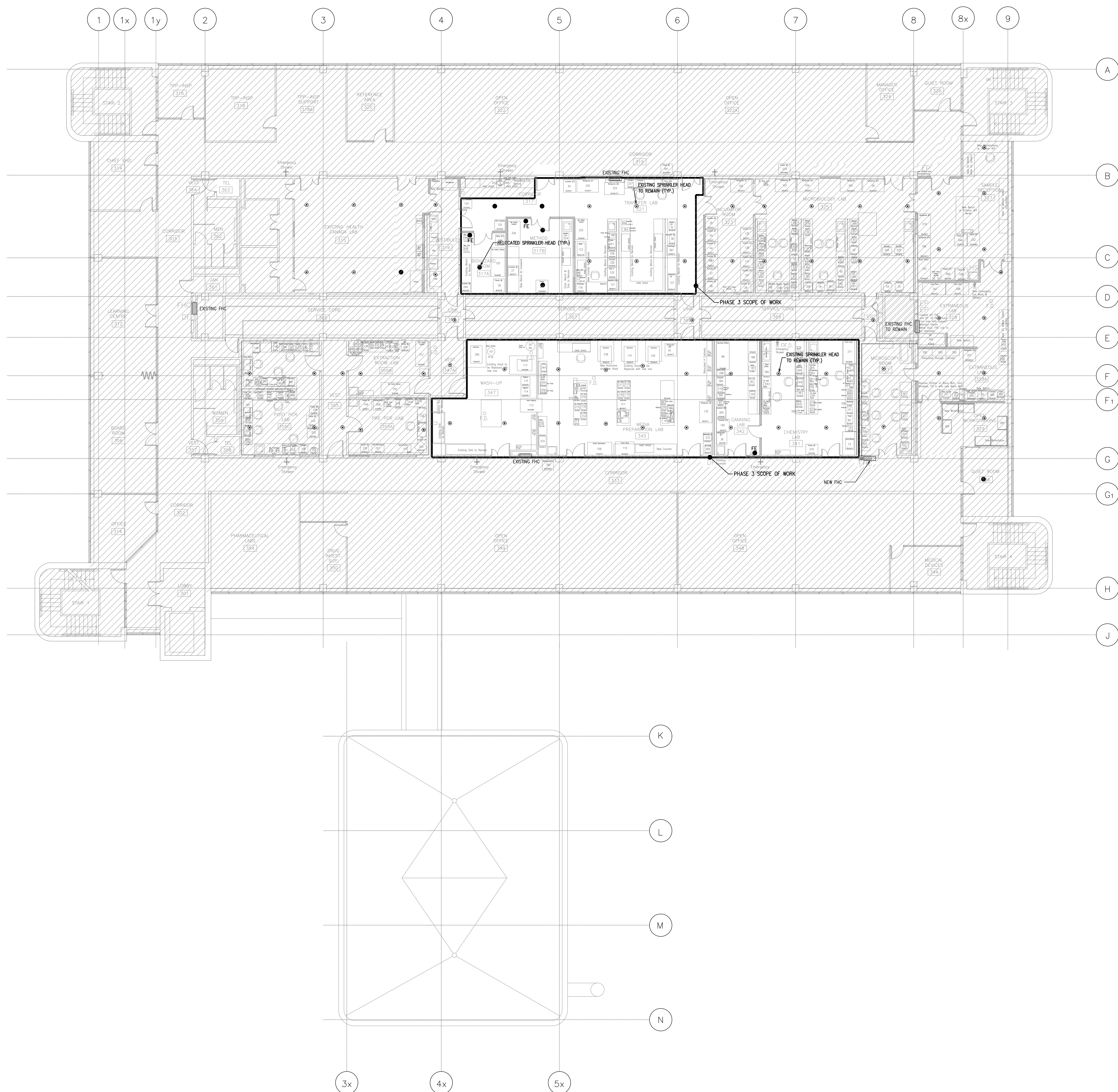
approved by  
approuve par J.S.

bid	project manager
offre	administrateur de projet

project date	
date du projet	2014-12-19

project no. no. du projet	R.061999.001
------------------------------	--------------

drawing no.  
dessine no. M-4.02



04		
03		
02		
01	ISSUED FOR TENDER	19.12.2016
revision		date

Do not scale drawings.  
Verify all dimensions and conditions on site and immediately  
notify the Departmental Representative of all discrepancies.

A	Detail No.
B	No. du détail
C	drawing no. - where detail required dessin no. - où détail requis
D	drawing no. - where detailed dessin no. - où détaillé

project title  
titre du projet  
SCARBOROUGH Ontario  
HEALTH CANADA BUILDING  
2301 MIDLAND AVENUE  
CFIA GTA LABORATORY  
EXPANSION AND FIT-UP

drawing title  
titre du dessin  
LEVEL 3 FIRE PROTECTION  
PLAN - PHASE 3

drawn by  
dessiné par  
D.R.

designed by  
conçu par  
D.R.

approved by  
approuvé par  
J.S.

bid  
offre  
project manager  
administrateur de projet

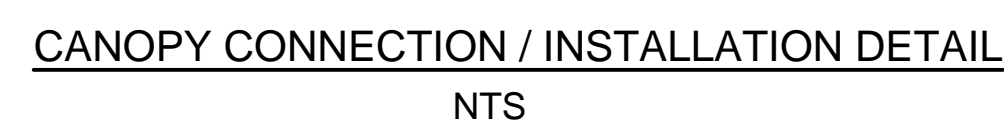
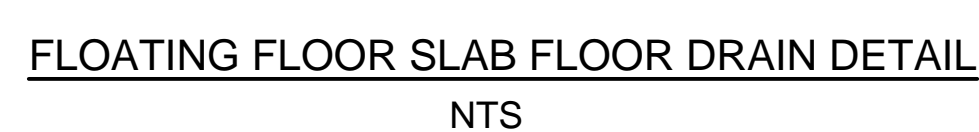
project date  
date du projet  
2014-12-19

project no.  
no. du projet  
R.061999.001


drawing no.  
dessiné no.  
M-4.03

## GENERAL NOTES:

- THIS DRAWING SHALL BE READ IN CONJUNCTION WITH ARCHITECTURAL DRAWINGS.
- CONTRACTOR AND ALL SUB-TRADES ARE RESPONSIBLE TO BE FAMILIAR WITH AND COMPLY WITH ALL ITEMS NOTED IN SEPARATE SPECIFICATION. FAILURE TO DO SO WILL RESULT IN CONTRACTOR CORRECTING ANY DEFICIENCY AT OWN EXPENSE.



Do not scale drawings.  
Verify all dimensions and conditions on site and immediately  
notify the Departmental Representative of all discrepancies.

 **A** Detail No.  
No. du détail

**B** drawing no. — where detail is located  
dessin no. — où détail est situé

**C** drawing no. — where detail is located  
dessin no. — où détaillé est situé

project title titre du projet	SCARBOROUGH	0
HEALTH CANADA BUILDING 2301 MIDLAND AVENUE		
CFIA GTA LABORATORY EXPANSION AND FIT-UP		

drawing title  
titre du dessin  
SCHEMATIC & DETAILS

drawn by  
dessine par **D.R.**

designed by conc par	D.R.
-------------------------	------

approved by  
approuvé par J.S.

bid	project manager
offre	administrateur de projets

project date date du projet	2014-07-24
--------------------------------	------------

R.061999.001

M-5.01

