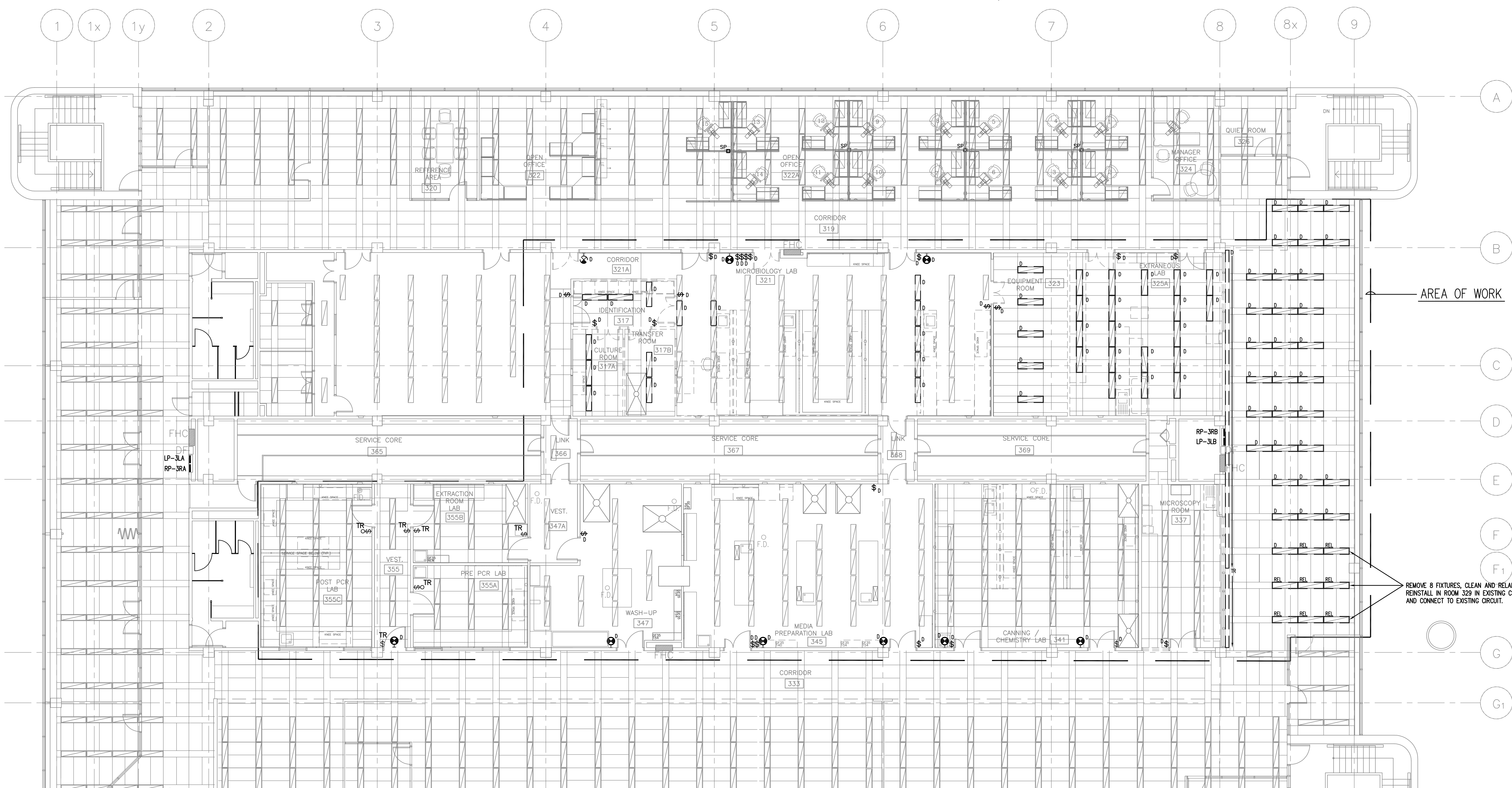
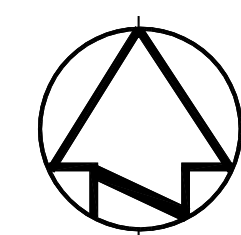




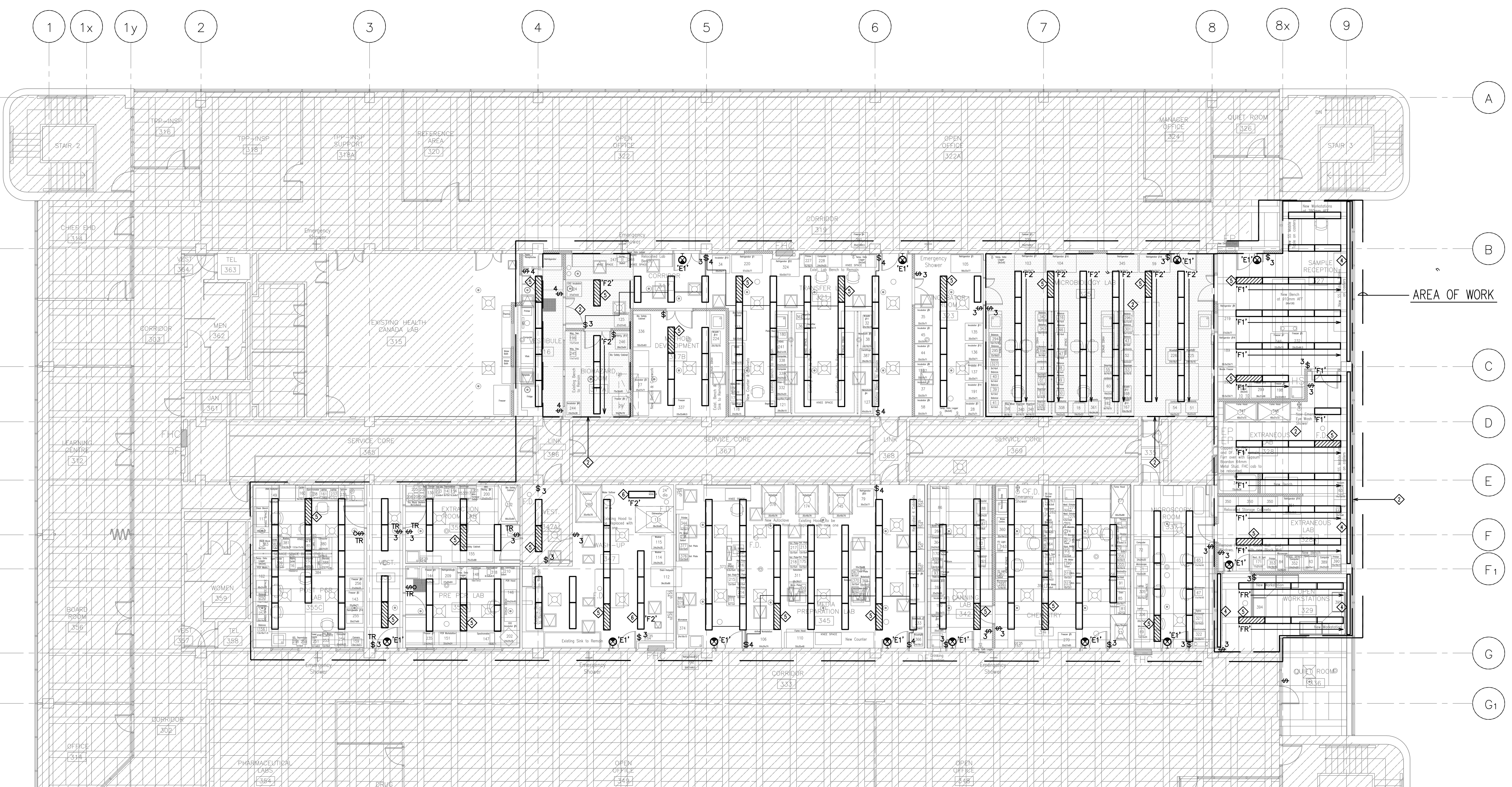
NOTE: NOT ALL SYMBOLS SHOWN ON THIS LEGEND ARE NECESSARILY USED ON THIS PROJECT.		ELECTRICAL SYMBOL LEGEND		ELECTRICAL DRAWING LIST	
LIGHTING		GENERAL POWER		ABBREVIATIONS	
LINEAR FLUORESCENT LUMINAIRE, TYPE 'X' AS SPECIFIED. HATCHING DENOTES CONNECTED TO EMERGENCY/NIGHT LIGHTING CIRCUIT		15A, U-GROUND SINGLE RECEPTACLE		A — AMPERES	
CEILING MOUNTED LUMINAIRE, TYPE 'X' AS SPECIFIED		15A, U-GROUND DUPLEX RECEPTACLE - 4 DENOTES QUAD RECEPTACLE (DOUBLE DUPLEX)		AC — MOUNTED ABOVE CEILING	
WALL MOUNTED LUMINAIRE, TYPE 'X' AS SPECIFIED		(5-20R) T-SLOT U-GROUND DUPLEX RECEPTACLE		AFCI — ARC FAULT CIRCUIT INTERRUPTER	
WALL MOUNTED SINGLE FACED EXIT LIGHT AND DIRECTIONAL ARROWS AS INDICATED. SHADED AREAS DENOTE DIRECTION OF FACE OF EXIT SIGN.		15A, U-GROUND SINGLE OR DUPLEX RECEPTACLE - MOUNTED ABOVE COUNTER		AFF — ABOVE FINISHED FLOOR	
CEILING MOUNTED DOUBLE FACED EXIT LIGHT AND DIRECTIONAL ARROWS AS INDICATED. SHADED AREAS DENOTE DIRECTION OF FACE OF EXIT SIGN.		120/208V/16/30 AMP OUTLET		AFG — ABOVE FINISHED GRADE	
CEILING MOUNTED SINGLE FACED EXIT LIGHT AND DIRECTIONAL ARROWS AS INDICATED. SHADED AREAS DENOTE DIRECTION OF FACE OF EXIT SIGN.		120/208V/16/40 AMP OUTLET		BFC — BELOW FINISHED CEILING	
LIGHTING CONTROL		SINGLE SPECIAL RECEPTACLE - AMPACITY AS INDICATED, TYPE 'X' AS SPECIFIED		BFG — BELOW FINISHED GRADE	
\$ \$ \$ \$ ONE, TWO, THREE AND FOUR GANG SINGLE POLE TOGGLE SWITCHES		15A, U-GROUND DUPLEX RECEPTACLE C/W GROUND FAULT CIRCUIT INTERRUPTER - STANDARD MOUNTING HEIGHT OR MOUNTED ABOVE COUNTER		BB — BASEBOARD HEATER	
3-WAY SWITCH		(5-20R) T-SLOT U-GROUND DUPLEX RECEPTACLE C/W GROUND FAULT CIRCUIT INTERRUPTER		BRK — BREAKER	
4-WAY SWITCH		EQUIPMENT CONNECTIONS AND CONTROLS		BU — BATTERY UNIT	
SWITCH MOUNTED OCCUPANCY SENSOR, TYPE 'X' AS SPECIFIED		DIRECT CONNECTION - 120 OR 208V AS SPECIFIED		C — CONDUCTOR	
CEILING MOUNTED OCCUPANCY SENSOR, TYPE 'X' AS SPECIFIED		MOTOR CONNECTION AS SPECIFIED		CF — CEILING FAN	
MISCELLANEOUS		MOTOR CONNECTION C/N UNFUSED DISCONNECT SWITCH		CLG — CEILING MOUNTED	
INDICATES EXISTING DEVICE TO REMAIN		MOTOR STARTER AS SPECIFIED		CM — COMBINATION MAGNETIC	
INDICATES EXISTING DEVICE TO BE MOVED		UNFUSED DISCONNECT SWITCH		CM FVNR — COMBINATION MAGNETIC, FULL VOLTAGE NON-REVERSABLE	
INDICATES EXISTING DEVICE TO BE RELOCATED OR IN RELOCATED POSITION		FUSED DISCONNECT SWITCH		CM RVNR — COMBINATION MAGNETIC, REDUCED VOLTAGE NON-REVERSABLE	
INDICATES EXISTING DEVICE TO BE DELETED		CLOCK HANGER OUTLET C/W CLOCK		CNDT — CONDUIT	
INDICATES CONDUIT		FIRE ALARM SYSTEM		D — DELETE	
ELECTRICAL DRAWING NOTES		PULL STATION		DB — DIRECT BURIED	
		FLUSH MOUNTED BELL		DN — DOWN	
		STROBE - WALL OR CEILING MOUNTED		DP — DISTRIBUTION PANEL	
		FLUSH MOUNTED SPEAKER - WALL OR CEILING MOUNTED		DT — DUST TIGHT	
		AUTOMATIC COMBINATION FIXED TEMPERATURE/RATE OF RISE THERMAL DETECTOR - WALL OR CEILING MOUNTED		EC — EMPTY CONDUIT	
		AUTOMATIC FIXED TEMPERATURE HEAT DETECTOR - WALL OR CEILING MOUNTED		EF — EXHAUST FAN	
		SMOKE DETECTOR - WALL OR CEILING MOUNTED		F — FLUSH FLOOR MOUNTED	
				FA — FIRE ALARM	
				FC — FOOT CANDLE	
				FU — FUSE	
				FZ — FREEZER	
				GFI — GROUND FAULT CIRCUIT INTERRUPTER	
				GRB — GARBURATOR	
				GW — GROUND WIRE	
				HP — HORSEPOWER	
				IG — ISOLATED GROUND	
				KVA — KILO VOLT-AMPERES	
				KW — KILOWATTS	
				LP — LIGHTING PANEL	
				LITG — LIGHTING	
				LV — LOW VOLTAGE	
				LVR — LOW VOLTAGE RELAY	
				MCC — MOTOR CONTROL CENTRE	
				MP — MOISTURE PROOF	
				MTD — MOUNTED	
				MTG — MOUNTING	
				MW — MOUNTED IN MILLWORK	
				NC — NORMALLY CLOSED	
				NIC — NOT IN CONTRACT	
				NL — NIGHT LIGHT	
				NTS — NOT TO SCALE	
				PA — PUBLIC ADDRESS	
				PH — PHASE PANEL	
				PHL — PP POWER PANEL	
				R — REMOVE	
				REL — RELOCATE(D)	
				RP — RECEPTACLE PANEL	
				SC — SEPARATE CIRCUIT	
				TEL — TELEPHONE	
				TYP — TYPICAL	
				UC — UNDER COUNTER	
				V — VOLT	
				WG — WIRE GUARD	
				WL — WET LOCATION	
				WP — WEATHERPROOF	
				WT — WATER TIGHT	
				WTP — WATERPROOF	



04		
03		
02		
01	ISSUED FOR TENDER	2014-12-19
revision		date
Do not scale drawings. Verify all dimensions and conditions on site and immediately notify the Departmental Representative of all discrepancies.		
 A Detail No. No. du détail B drawing no. - where detail required dessin no. - où détail requis C drawing no. - where detailed dessin no. - où détaillé		
project title titre du projet SCARBOROUGH Ontario HEALTH CANADA BUILDING 2301 MIDLAND AVENUE CFIA GTA LABORATORY EXPANSION AND FIT-UP		
drawing title titre du dessin ELECTRICAL SYMBOL LEGEND AND DRAWING LIST		
drawn by dessiné par	R.A.	
designed by conçu par	K.S.	
approved by approuvé par	J.S.	
bid offre	project manager administrateur de projets	
project date date du projet	2014-12-19	
project no. no. du projet	R.061999.001	
drawing no. dessiné no.	E-1.01	



1 PART LEVEL 3 - DEMOLITION - LIGHTING LAYOUT
1:100



2 PART LEVEL 3 - NEW - LIGHTING LAYOUT
1:100

GENERAL NOTES

1. ALL EXISTING LIGHT FIXTURES WITHIN AREA OF WORK ARE EXISTING TO REMAIN UNLESS NOTED OTHERWISE.
2. ALL EXISTING EXIT LIGHTS WITHIN AREA OF WORK ARE EXISTING TO REMAIN UNLESS NOTED OTHERWISE.

DRAWING NOTES

- ◆ ALL FLUORESCENT FIXTURES ON THIS DRAWING TO BE TYPE "T" UNLESS OTHERWISE NOTED.
- ◆ AREA WITH NEW CEILING. PROVIDE NEW FIXTURES AND CONNECT TO EXISTING NORMAL AND EMERGENCY CIRCUITS AS INDICATED.
- ◆ IN AREAS WHERE EXISTING LIGHTING IS TO REMAIN, RECONNECT ALL FIXTURES BEING DISCONNECTED DUE TO CONSTRUCTION TO THEIR EXISTING CIRCUITS, EXCEPT FOR EMERGENCY CIRCUITS TO BE REWIRED TO FIXTURES AS INDICATED.
- ◆ EXISTING COVE LIGHTING TO REMAIN. IF DISCONNECTED, RECONNECT TO EXISTING CIRCUIT AND CONTROLS.
- ◆ LIGHT FIXTURES TO BE CONNECTED TO NEAREST EXISTING EMERGENCY LIGHTING CIRCUIT.
- ◆ INSTALL NEW FIXTURE INTO EXISTING GYPSUM BOARD CEILING AND CONNECT TO EXISTING CIRCUIT.
- ◆ REMOVE ALL EXISTING EXIT SIGNS AND REPLACE WITH NEW PHOTOGRAPH EXIT SIGNS TO MEET CURRENT CODE REQUIREMENTS. PROVIDE ADDITIONAL EXIT SIGNS AS INDICATED AND CONNECT ALL TO EXISTING EXIT SIGN CIRCUIT.



04		
03		
02		
01	ISSUED FOR TENDER	2014-12-19
revision		date

Do not scale drawings.
Verify all dimensions and conditions on site and immediately
notify the Departmental Representative of all discrepancies.

A	Detail No.
B	No. du détail
C	drawing no. - where detail required
	dessin no. - où détail requis
	drawing no. - where detailed
	dessin no. - où détaillé

project title
titre du projet
SCARBOROUGH Ontario
HEALTH CANADA BUILDING
2301 MIDLAND AVENUE
CHIA GTA LABORATORY
EXPANSION AND FIT-UP
drawing title
titre du dessin
LEVEL 3 FLOOR PLAN -
PROPOSED LIGHTING LAYOUT

drawn by
dessiné par R.A.

designed by
conçu par K.S.

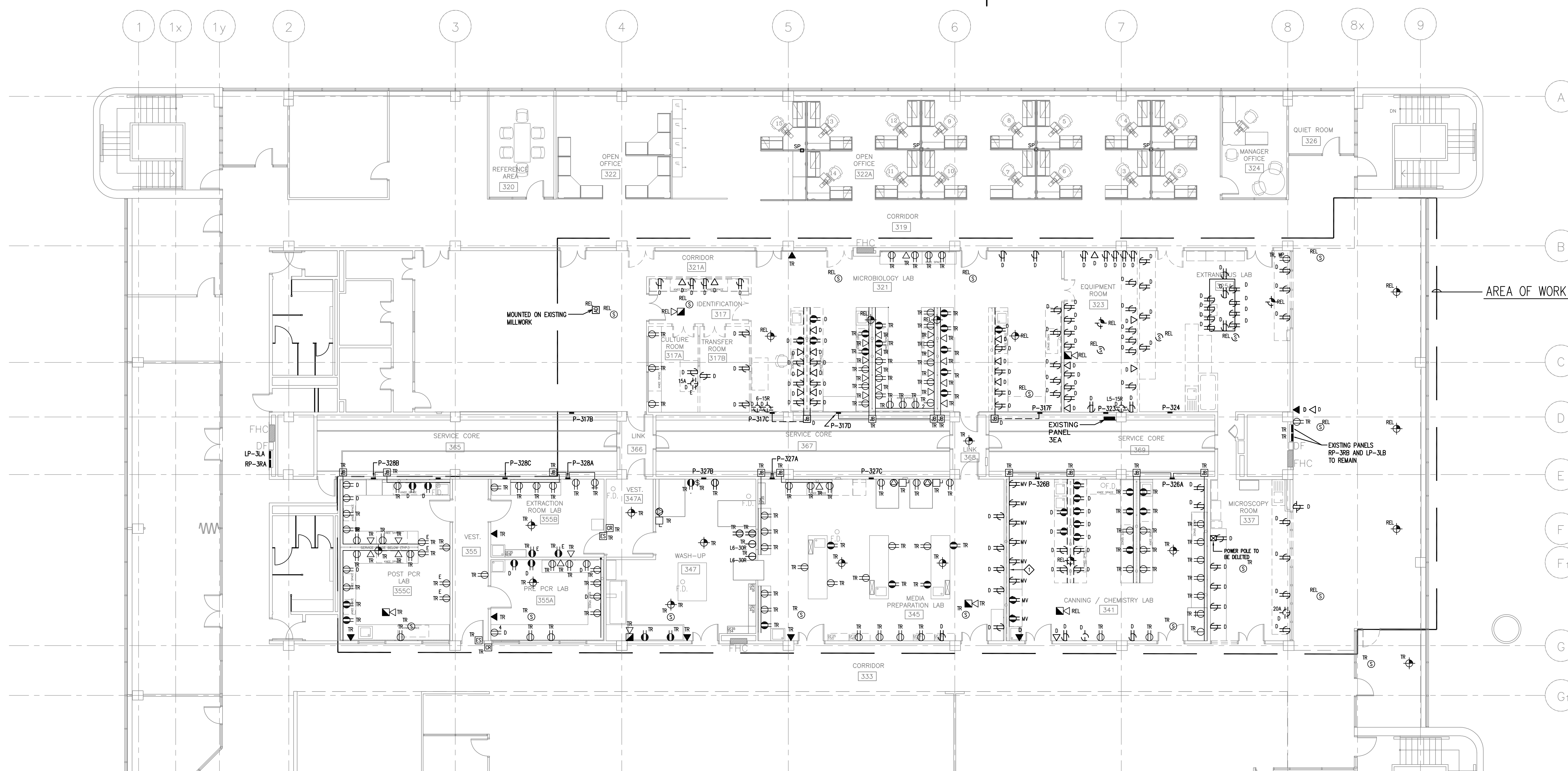
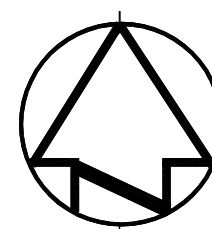
approved by
approuvé par J.S.

bid
offre project manager
administrateur de projet

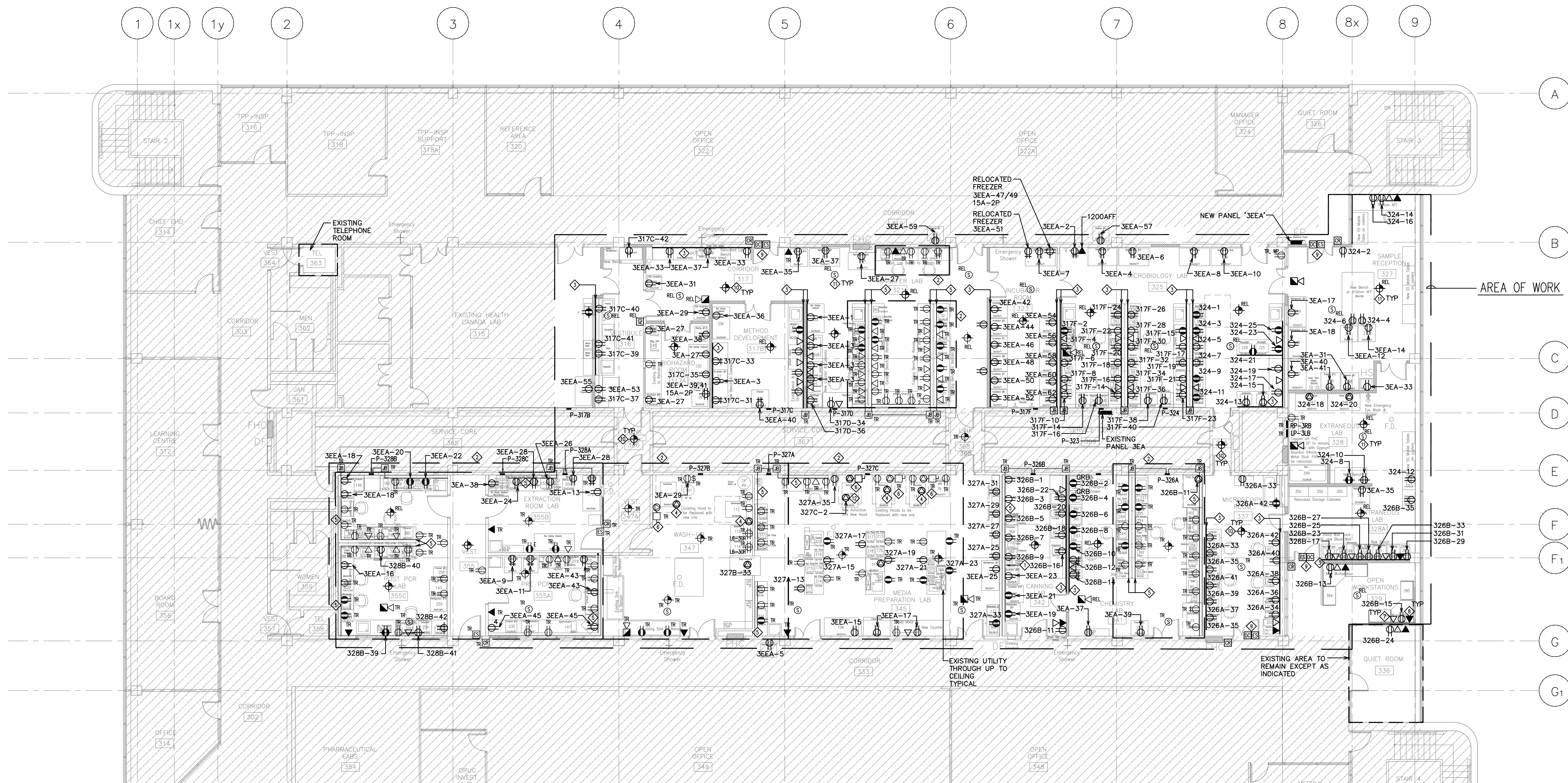
project date
date du projet 2014-12-19

project no.
no. du projet R.061999.001

drawing no.
dessiné no. E-2.01



1 PART LEVEL 3 - DEMOLITION - POWER AND SYSTEMS LAYOUT
1:100



2 PART LEVEL 3 - NEW - POWER AND SYSTEMS LAYOUT
1:100

GENERAL NOTES

1. -

DRAWING NOTES

- ◇ REMOVE EXISTING WIRING AND STORE IN SAFE AREA. WHEN NEW WALL IS IN PLACE RE-INSTALL WIRING AND CONNECT TO SUPPLY JUNCTION BOX.
- ◇ EXISTING WIRING IN RELOCATED POSITION, CONNECT TO EXISTING SUPPLY JUNCTION BOX.

GENERAL NOTES

1. ALL RECEPTABLES CONNECTED TO EMERGENCY CIRCUITS ('SEA' & 'SEA') SHALL BE NEW AND RED IN COLOR.
2. PROVIDE LAMP/OD LABEL FOR CIRCUIT ON ALL RECEPTABLES AS INDICATED.
3. FOR ALL EXISTING DEVICES BEING REMOVED, DISCONNECT FEEDERS AND/OR SERVICES AT SOURCE, REMOVE ALL REDUNDANT CONDUITS, CABLES, WIRING, ETC. AND MAKE SAFE.

DRAWING NOTES

- ◇ EXISTING WIRING IN RELOCATED POSITION, CONNECT TO EXISTING SUPPLY JUNCTION BOX, RECONNECT ALL RECEPTABLES TO EXISTING CIRCUITS.
- ◇ DEVICES WITH 'TR' - DENOTES EXISTING DEVICES TO REMAIN. IF ANY DEVICES THAT ARE TO REMAIN ARE BEING DISCONNECTED DUE TO CONSTRUCTION, THE CONTRACTOR SHALL RECONNECT DEVICES TO EXISTING CIRCUITS AND/OR SERVICES.
- ◇ NEW SURFACE WIRING ON NEW WALL OR CASEWORK C/W DEVICES AS INDICATED. CONNECT NEW DEVICES TO EXISTING CIRCUITS WHERE APPLICABLE OR CONNECT AS INDICATED. NEW WIRING TO BE INSTALLED IN 400 SERIES OR TO MATCH EXISTING EXACT LOCATIONS AND INSTALLATION REQUIREMENTS TO BE COORDINATED WITH CASE WORK.
- ◇ EXISTING HOOD TO BE REPLACED WITH NEW, DISCONNECT EXISTING AND CONNECT NEW HOOD TO EXISTING CIRCUIT.
- ◇ EXISTING SURFACE MOUNTED WIRING TO REMAIN.
- ◇ PROVIDE NEW UPS POWER CONNECTION FOR 3 EXISTING AUTOLAVES AND 1 NEW AUTOLAVE. REFER TO DIAGRAM ON DRAWING E-4.01.
- ◇ FOR ALL NEW DATA OUTLETS RUN CONDUITS TO TERMINATE IN EXISTING IT OFFICE ON LEVEL 2. ALSO REFER TO DETAIL ON DRAWING E-4.01.
- ◇ FOR ALL NEW TELEPHONE OUTLETS RUN CONDUITS TO TERMINATE IN EXISTING TELEPHONE ROOM ON LEVEL 3. ALSO REFER TO DETAIL ON DRAWING E-4.01.
- ◇ FOR ALL NEW SECURITY SYSTEM DEVICES RUN CONDUITS TO TERMINATE IN EXISTING CENTRAL SERVICE CORE ON LEVEL 3 OR AS DIRECTED ON SITE.
- ◇ FOR ALL NEW FIRE ALARM SYSTEM DEVICES PROVIDE CONDUIT AND WIRING AND CONNECT TO APPLICABLE EXISTING ZONE.
- ◇ FOR ALL RELOCATED DEVICES EXTEND EXISTING CONDUIT AND WIRING AS REQUIRED AND RECONNECT TO EXISTING CIRCUITS AND/OR SERVICES.
- ◇ PROVIDE CONNECTION TO NEW HOOD AT NEW AUTOLAVE. CONNECT TO 15A-1P BREAKER IN PANEL P-317C. RUN 1/2" EMT TO HOOD AND CONNECT.



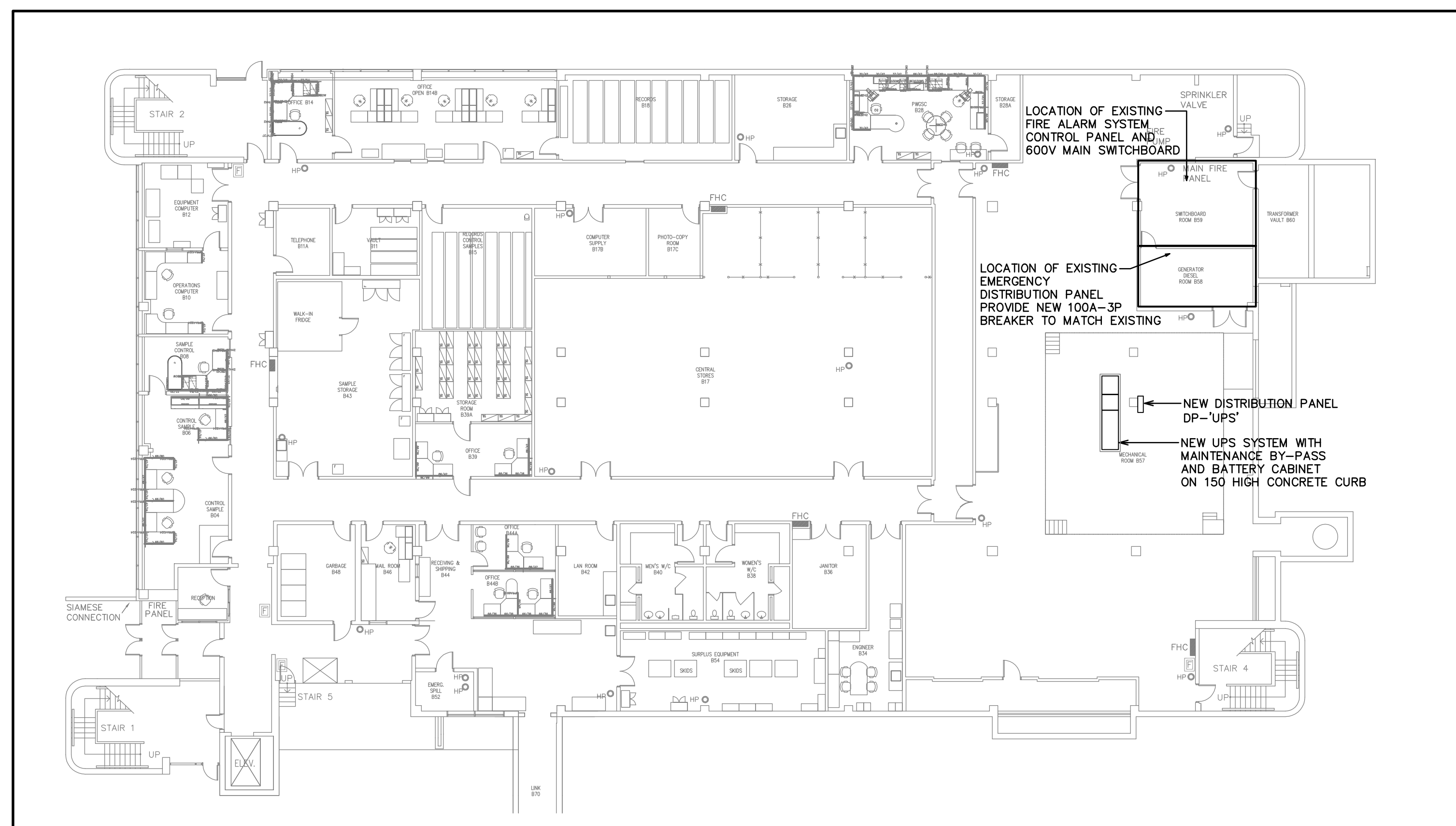
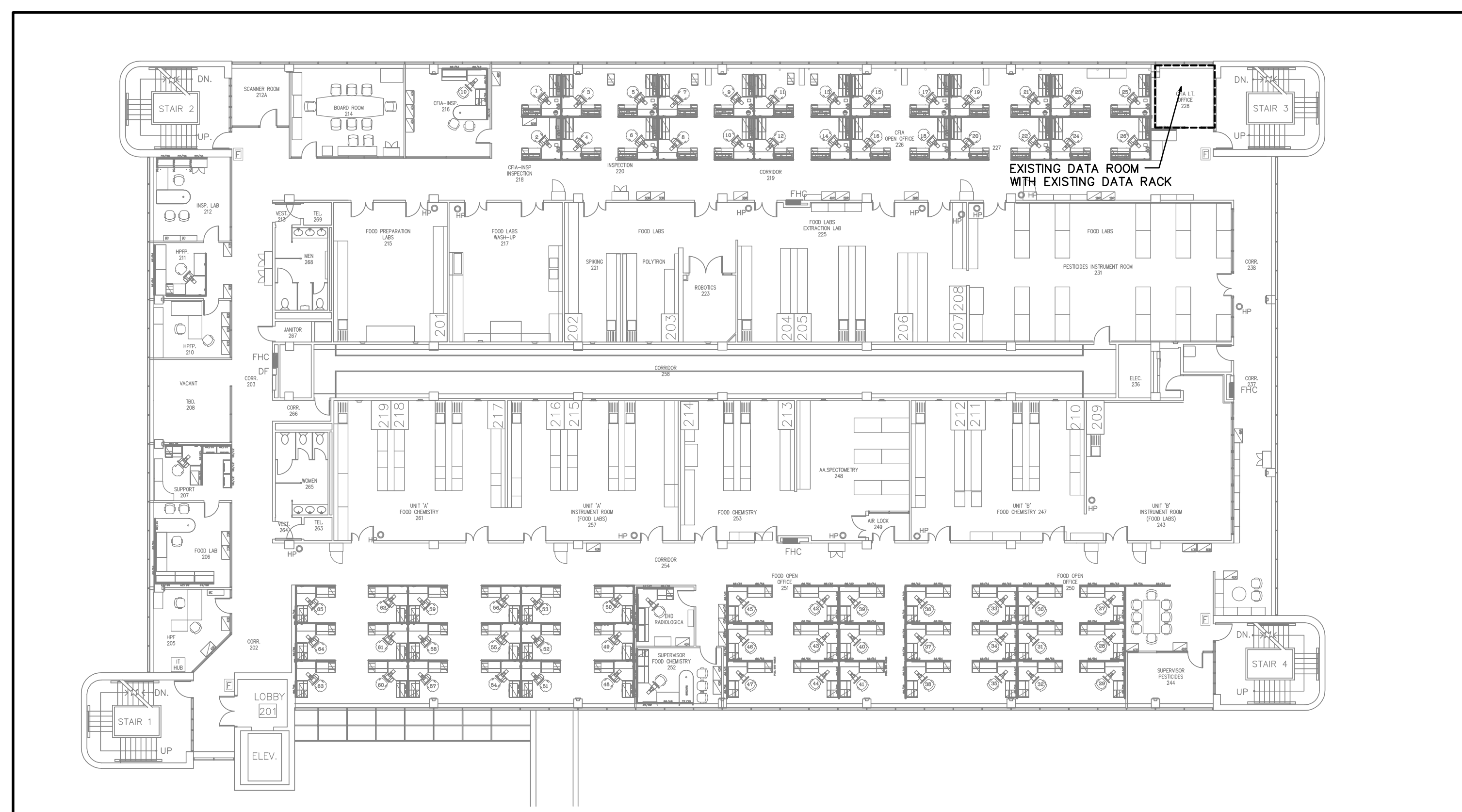
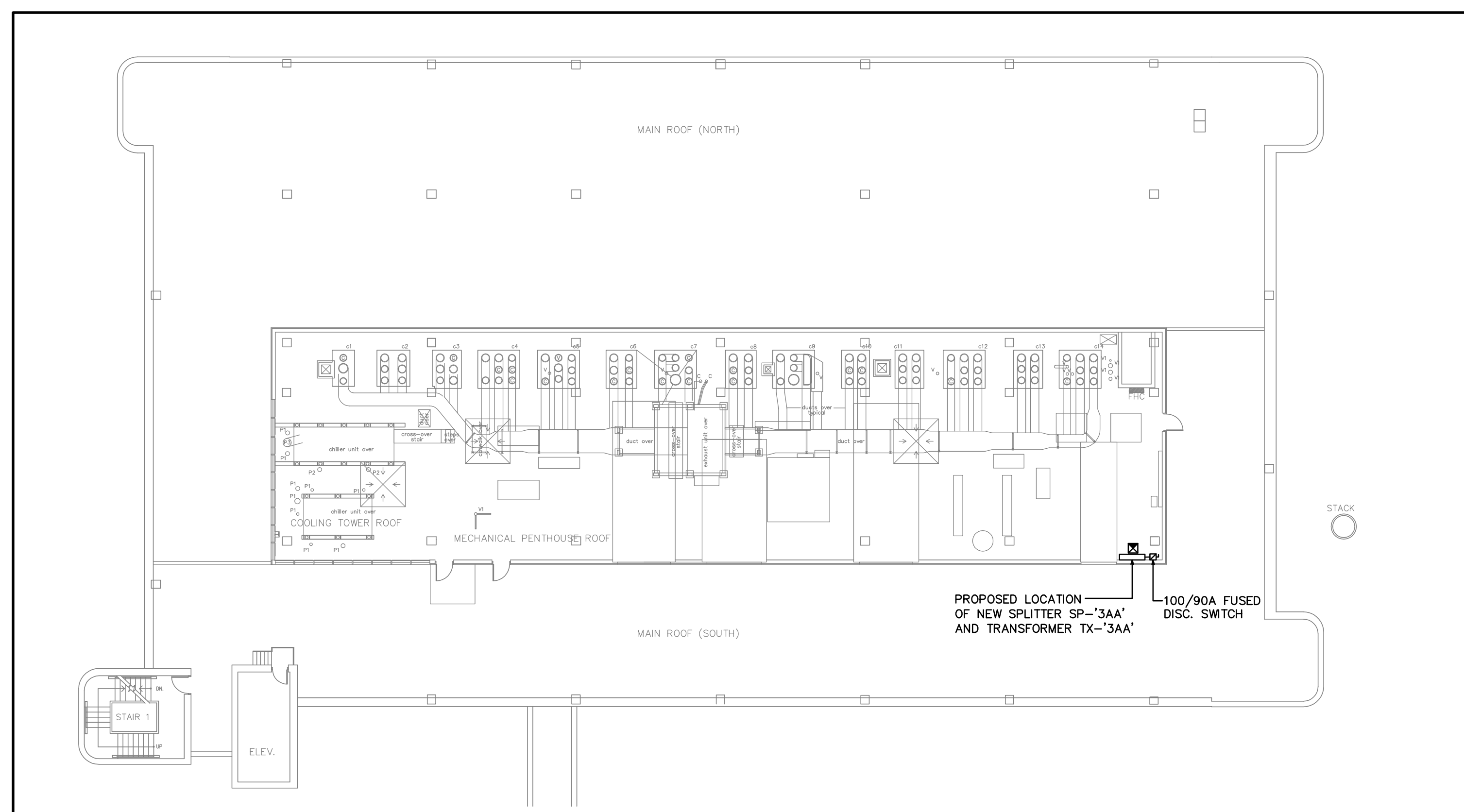
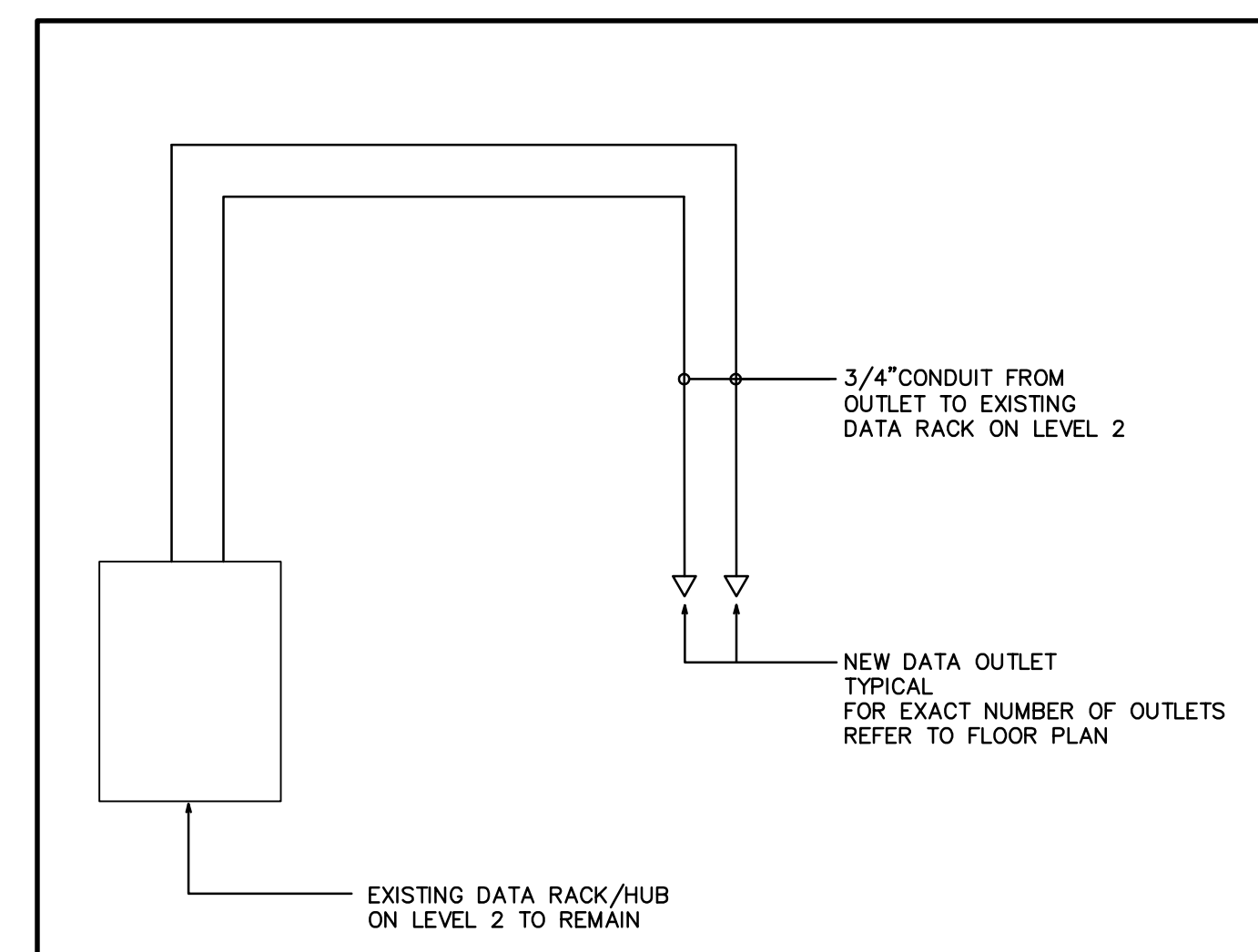
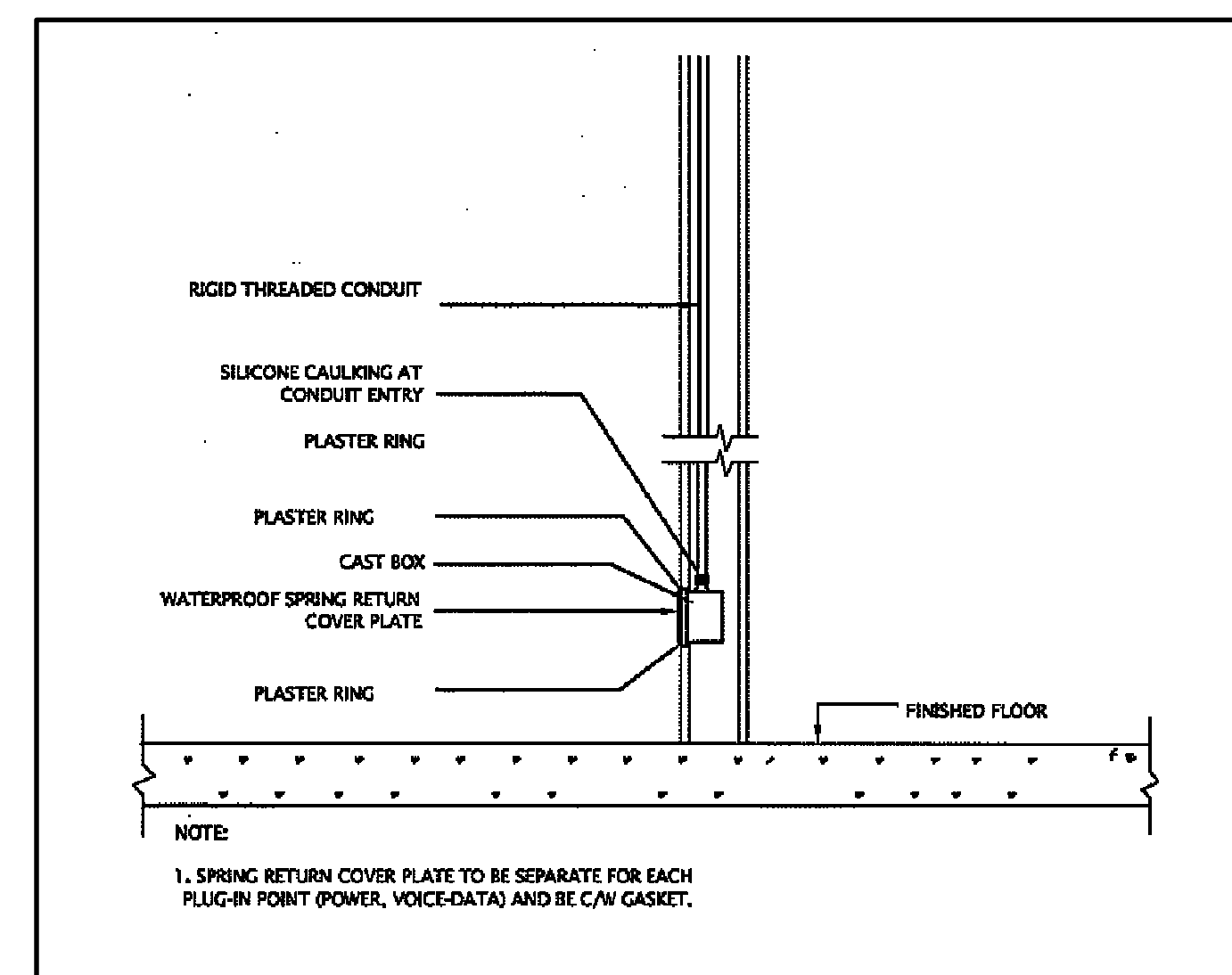
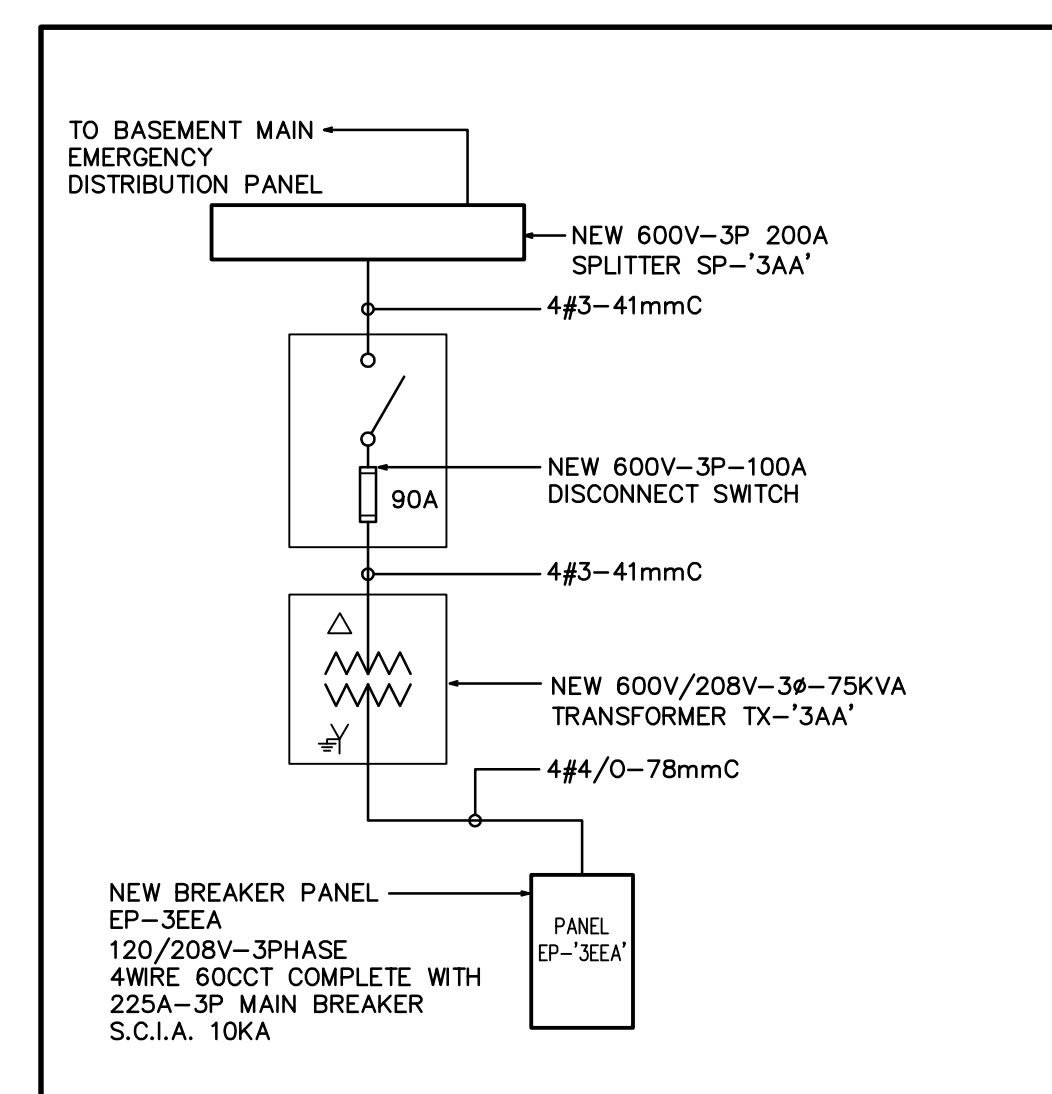
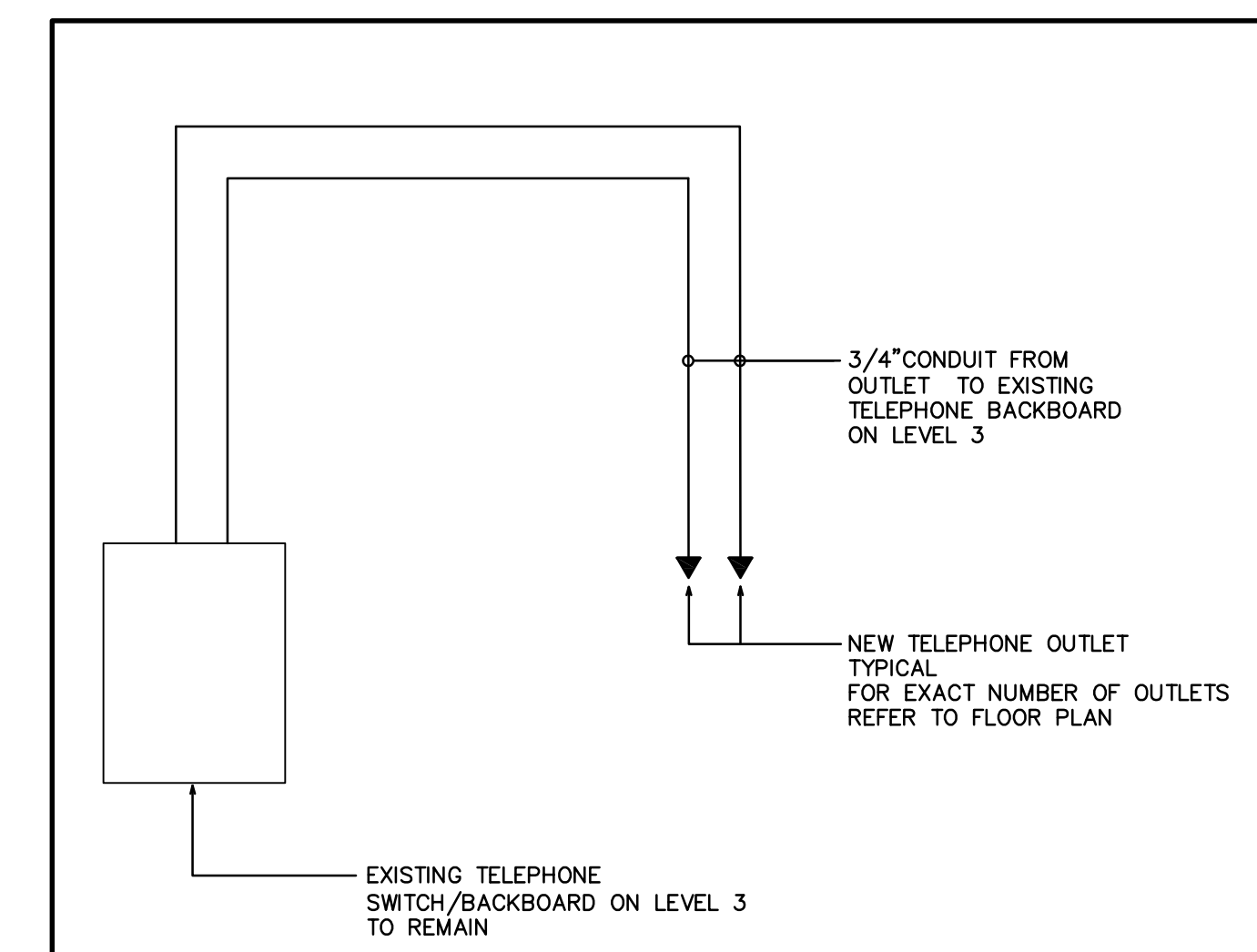
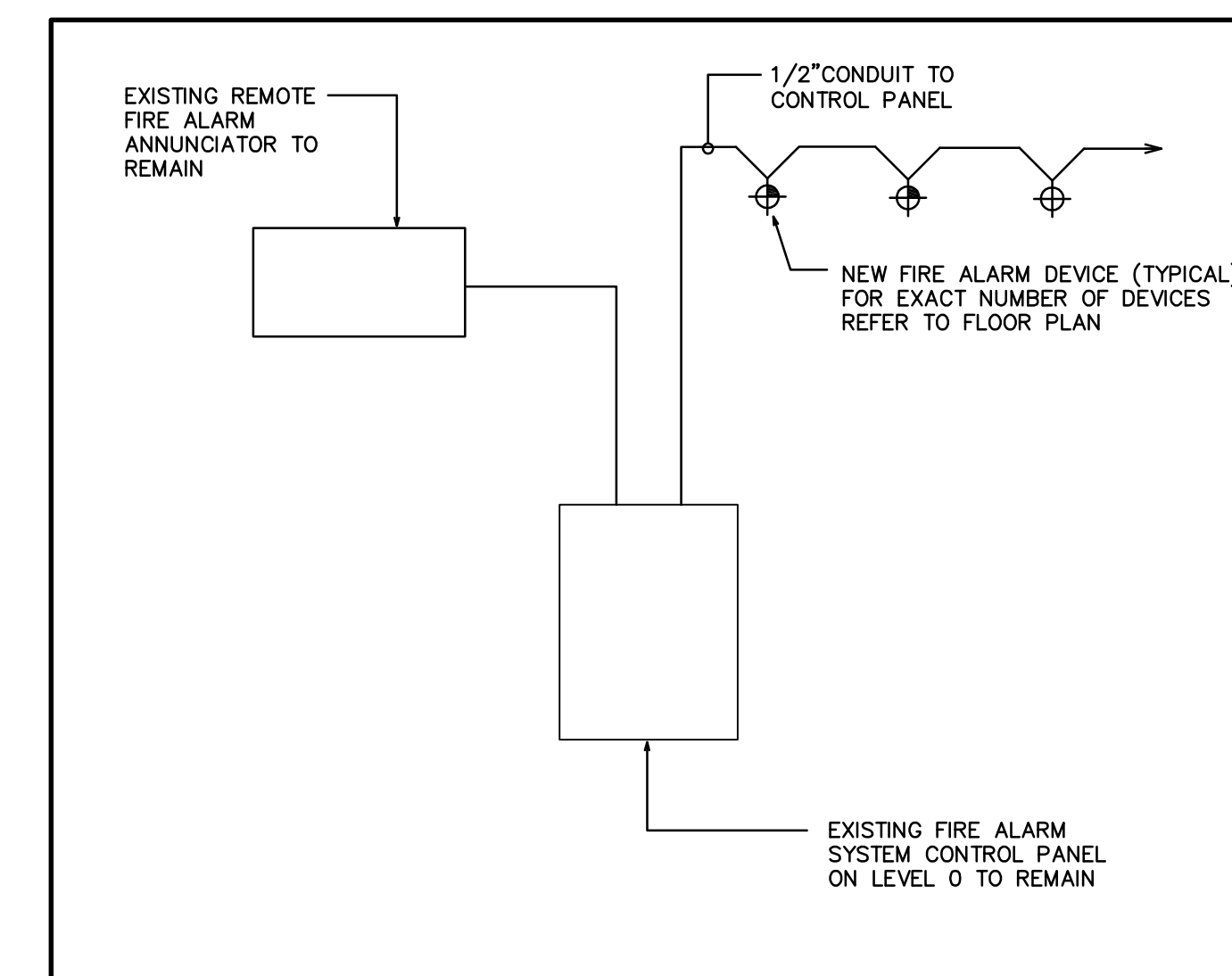
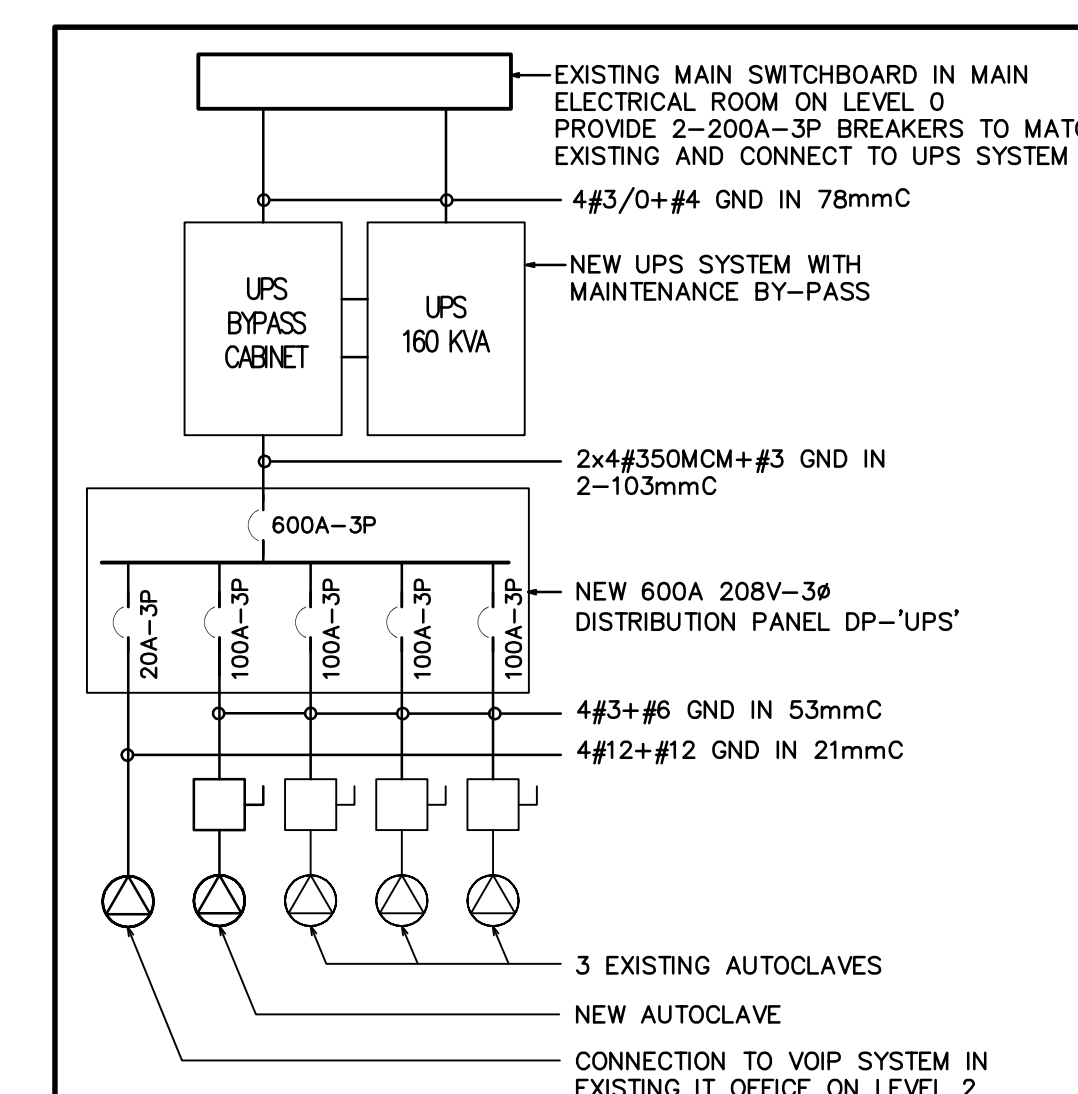
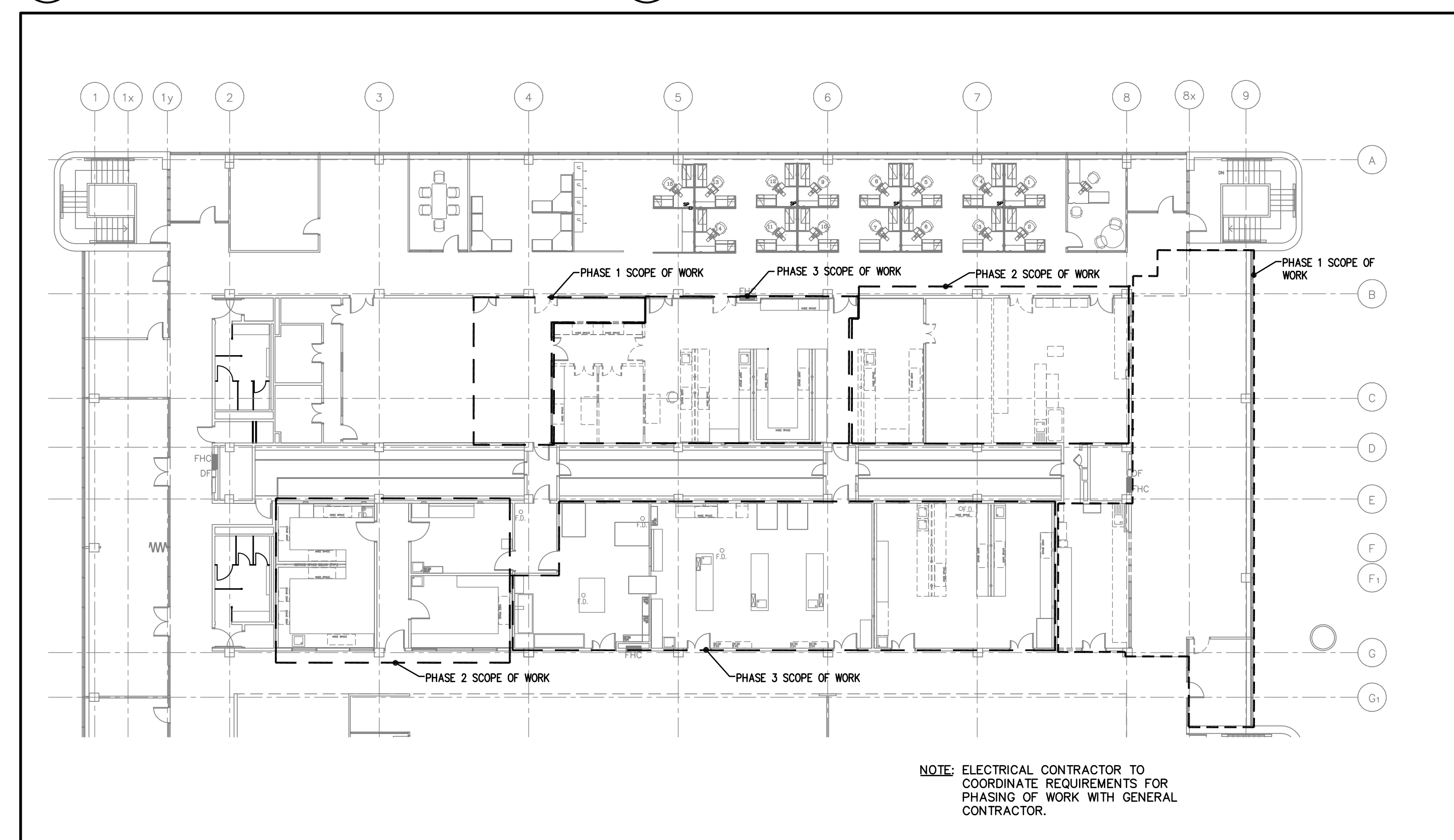
04		
03		
02		
01	ISSUED FOR TENDER	2014-12-19
revision		date

Do not scale drawings.
Verify all dimensions and conditions on site and immediately
notify the Departmental Representative of all discrepancies.

A	Detail No.
B	No. du détail
C	drawing no. - where detail required
C	drawing no. - où détail requis
C	drawing no. - where detailed
C	drawing no. - où détaillé

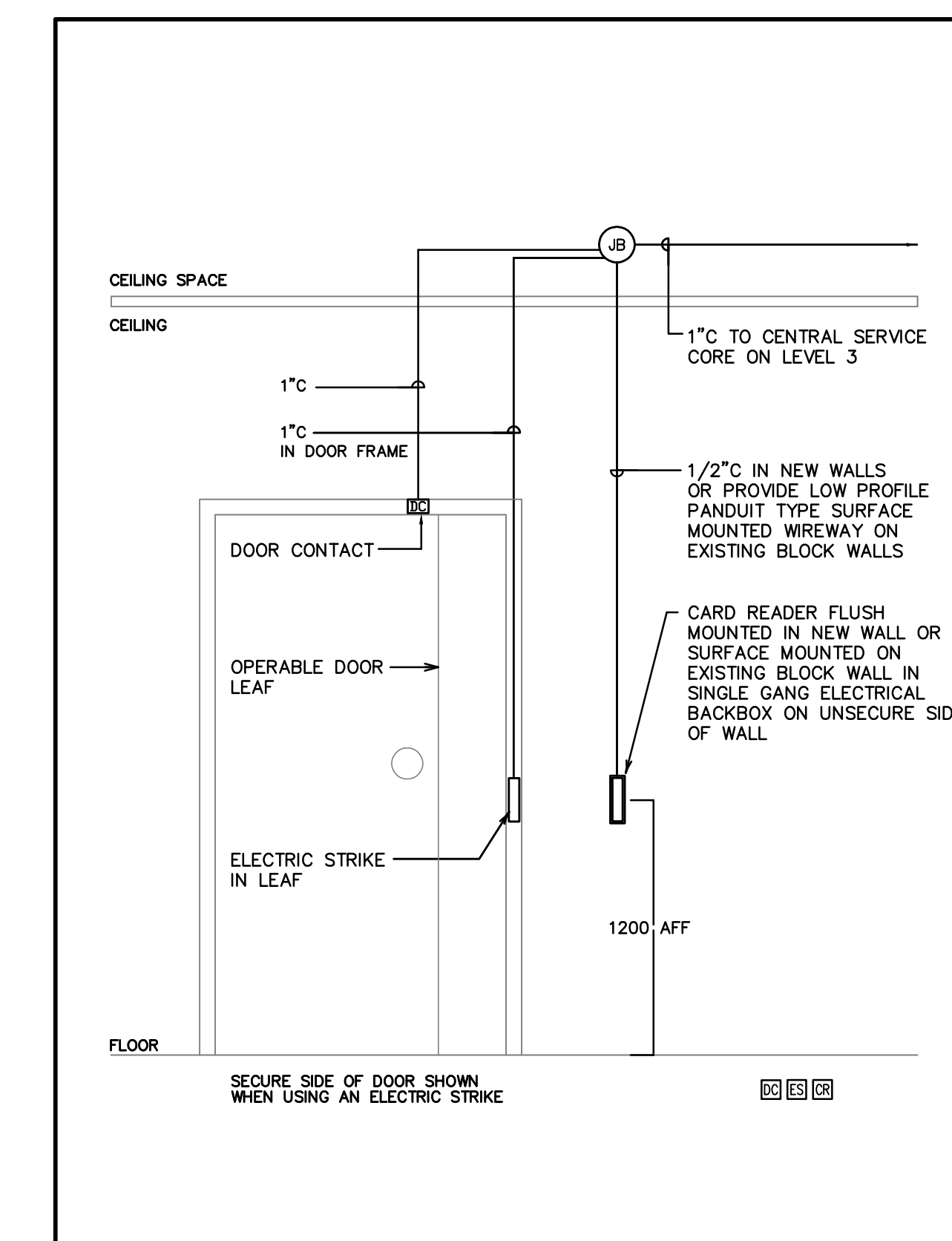
project title
titre du projet
SCARBOROUGH Ontario
HEALTH CANADA BUILDING
2301 MIDLAND AVENUE
CHIA GTA LABORATORY
EXPANSION AND FIT-UP
drawing title
titre du dessin
LEVEL 3 FLOOR PLAN -
PROPOSED POWER LAYOUT

drawn by dessiné par	R.A.	project manager administrateur de projet
designed by conçu par	K.S.	
approved by approuvé par	J.S.	
bid offre		
project date date du projet	2014-12-19	
project no. no. du projet	R.061999.001	
drawing no. dessiné no.	E-3.01	

EXISTING LEVEL 0
1:200EXISTING LEVEL 2
1:200EXISTING MECHANICAL PENTHOUSE
1:2005 DATA RISER DIAGRAM
E-4.0/ N.T.S.3 TYPICAL SEALED LAB RECEPTACLE DETAIL
E-4.0/ N.T.S.1 NEW EMERGENCY POWER SUPPLY TO NEW PANEL 3EEA
E-4.0/ N.T.S.4 TELEPHONE RISER DIAGRAM
E-4.0/ N.T.S.2 FIRE ALARM SYSTEM RISER DIAGRAM
E-4.0/ N.T.S.4 NEW UPS POWER SUPPLY TO AUTOCLAVES
E-4.0/ N.T.S.NEW LEVEL 3 PHASING PLAN
1:200

PANEL EP-3EEA											
TOTAL LOAD: -KVA		TYPE: 120/208V 3P 4W		MOUNTING: SURFACE		LOCATION: -		TOTAL CIRCUITS: 60		MAINS: 225A	
LOAD KVA	DESCRIPTION	SERV REF	BRKR	C C	BRKR	SERV REF	DESCRIPTION	LOAD KVA			
100	GFI REC. RM 321	1	15	1	15	1	REC. RM 325	200			
100	GFI REC. RM 321	1	15	2	15	1	REC. RM 325	200			
100	REC. RM 333	1	15	3	15	1	REC. RM 325	200			
100	REC. RM 323	1	15	4	15	1	REC. RM 325	200			
200	REC. RM 355A	1	20	5	15	1	REC. RM 325	200			
100	REC. RM 355A	1	20	6	15	1	REC. RM 325	200			
100	REC. RM 355B	1	15	7	15	1	REC. RM 327	200			
REC. RM 345	1	15	8	15	1	REC. RM 355C	200				
REC. RM 345	1	15	9	15	1	REC. RM 355C	200				
REC. RM 342	1	15	10	15	1	REC. RM 355C	100				
REC. RM 342	1	15	11	15	1	REC. RM 355C	100				
REC. RM 345	1	15	12	15	1	REC. RM 355B	100				
REC. RM 321	1	15	13	15	2	REC. RM 355B	200				
REC. RM 317	1	15	14	15		SPARE					
REC. RM 317	1	15	15	15		SPARE					
REC. RM 317	1	15	16	15		SPARE					
REC. RM 317	1	15	17	15		SPARE					
REC. RM 317	1	15	18	15		SPARE					
REC. RM 317	1	15	19	15		SPARE					
REC. RM 317	1	15	20	15		SPARE					
REC. RM 317	1	15	21	15		SPARE					
REC. RM 317	1	15	22	15		SPARE					
REC. RM 317	1	15	23	15		SPARE					
REC. RM 317	1	15	24	15		SPARE					
REC. RM 317	1	15	25	15		SPARE					
REC. RM 317	1	15	26	15		SPARE					
REC. RM 317	1	15	27	15		SPARE					
REC. RM 317	1	15	28	15		SPARE					
REC. RM 317	1	15	29	15		SPARE					
REC. RM 317	1	15	30	15		SPARE					
REC. RM 317	1	15	31	15		SPARE					
REC. RM 317	1	15	32	15		SPARE					
REC. RM 317	1	15	33	15		SPARE					
REC. RM 317	1	15	34	15		SPARE					
REC. RM 317	1	15	35	15		SPARE					
REC. RM 317	1	15	36	15		SPARE					
REC. RM 317	1	15	37	15		SPARE					
REC. RM 317	1	15	38	15		SPARE					
REC. RM 317	1	15	39	15		SPARE					
REC. RM 317	1	15	40	15		SPARE					
REC. RM 317	1	15	41	15		SPARE					
REC. RM 317	1	15	42	15		SPARE					
REC. RM 317	1	15	43	15		SPARE					
REC. RM 317	1	15	44	15		SPARE					
REC. RM 317	1	15	45	15		SPARE					
REC. RM 317	1	15	46	15		SPARE					
REC. RM 317	1	15	47	15		SPARE					
REC. RM 317	1	15	48	15		SPARE					
REC. RM 317	1	15	49	15		SPARE					
REC. RM 317	1	15	50	15		SPARE					
REC. RM 317	1	15	51	15		SPARE					
REC. RM 317	1	15	52	15		SPARE					
REC. RM 317	1	15	53	15		SPARE					
REC. RM 317	1	15	54	15		SPARE					
REC. RM 317	1	15	55	15		SPARE					
REC. RM 317	1	15	56	15		SPARE					
REC. RM 317	1	15	57	15		SPARE					
REC. RM 317	1	15	58	15		SPARE					
REC. RM 317	1	15	59	15		SPARE					
REC. RM 317	1	15	60	15		SPARE					
REC. RM 317	1	15	61	15		SPARE					
REC. RM 317	1	15	62	15		SPARE					
REC. RM 317	1	15	63	15		SPARE					
REC. RM 317	1	15	64	15		SPARE					
REC. RM 317	1	15	65	15		SPARE					
REC. RM 317	1	15	66	15		SPARE					
REC. RM 317	1	15	67	15		SPARE					
REC. RM 317	1	15	68	15		SPARE					
REC. RM 317	1	15	69	15		SPARE					
REC. RM 317	1	15	70	15		SPARE					
REC. RM 317	1	15	71	15		SPARE					
REC. RM 317	1	15	72	15		SPARE					

LIGHTING FIXTURE SCHEDULE											
SYMBOL	BASE MANUFACTURER	MODEL NUMBER	Ceiling Type	WALL Type	WALL Type	WALL Type	WALL Type	WALL Type	WALL Type	WALL Type	REMARKS
F1	OFI	GA-14-2-F28-G-3-AP3-120V	•	•	•	•	•	•	•	•	1'X4' RECESSED FLUORESCENT FIXTURE, 0.9, 125° THICK LENS, SEALED AND GASKETED SURFACE FOR CLEAN ROOM APPLICATIONS.
F2	OFI	BA-14-2-F28-F-3-AP3-120V	•	•	•	•	•	•	•	•	SAME AS F1, EXCEPT MOUNTED IN DRYWALL
F3		EXISTING FIXTURE TO REMAIN									
F4		RELOCATED EXISTING FIXTURE									
F5	LUMACELL	LA SERIES PICTOGRAM EXIT SIGN									LED, EMERGLITE BEHRELLI, C/W MOUNTING HARDWARE AS PER MOUNTING INDICATED ON PLANS

6 TYPICAL SINGLE DOOR WITH CARD READER AND ELECTRIC STRIKE
E-4.0/ N.T.S.

Public Works and Government Services Canada
Travaux publics et Services gouvernementaux Canada

04
03
02
01 ISSUED FOR TENDER 2014-12-19

revision date

Do not scale drawings. Verify all dimensions and conditions on site and immediately notify the Departmental Representative of all discrepancies.

A Detail No. No. du détail
B drawing no. - où détail requis
C drawing no. - où détail requis

project title
titre du projet
SCARBOROUGH Ontario
HEALTH CANADA BUILDING
2301 MIDLAND AVENUE
CHIA GTA LABORATORY
EXPANSION AND FIT-UP

drawing title
titre du dessin
EXISTING FLOOR PLANS,
RISER DIAGRAMS & SCHEDULES

drawn by
dessiné par
R.A.

designed by
conçu par
K.S.

approved by
approuvé par
J.S.

bid
offre
project manager
administrateur de projet

project date
date du projet
2014-12-19

project no.
no. du projet
R.061999.001

drawing no.
dessiné no.
E-4.01