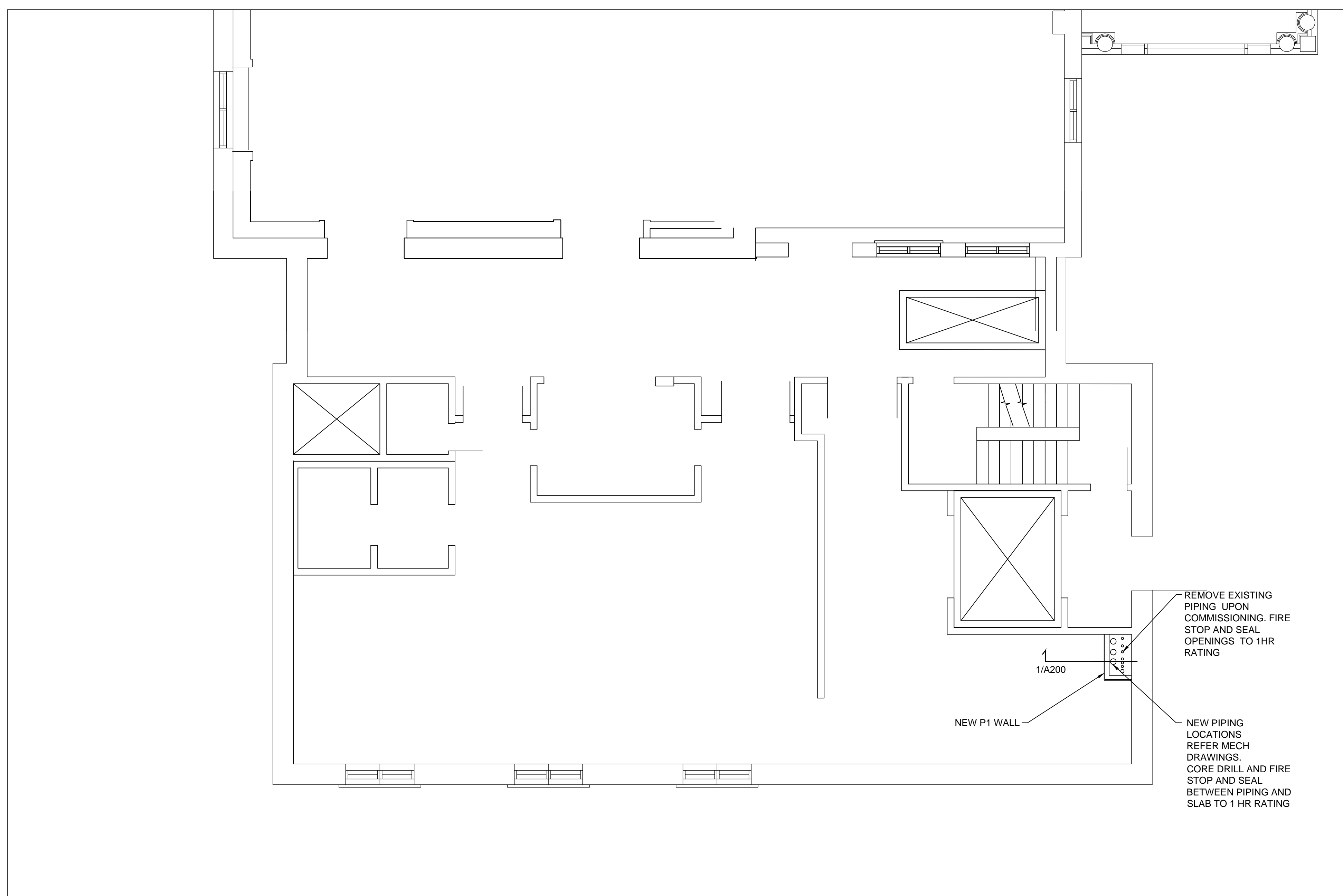
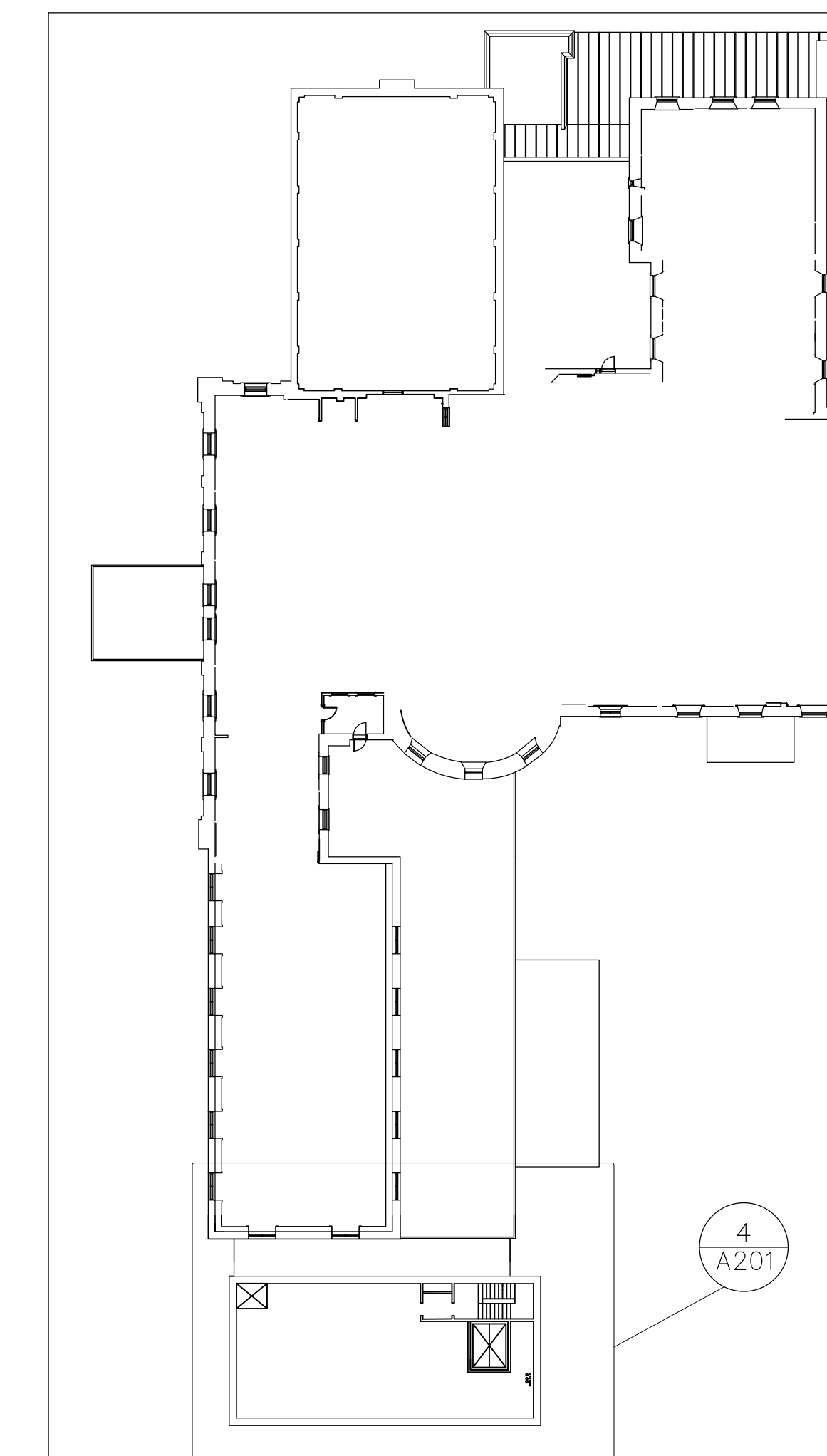


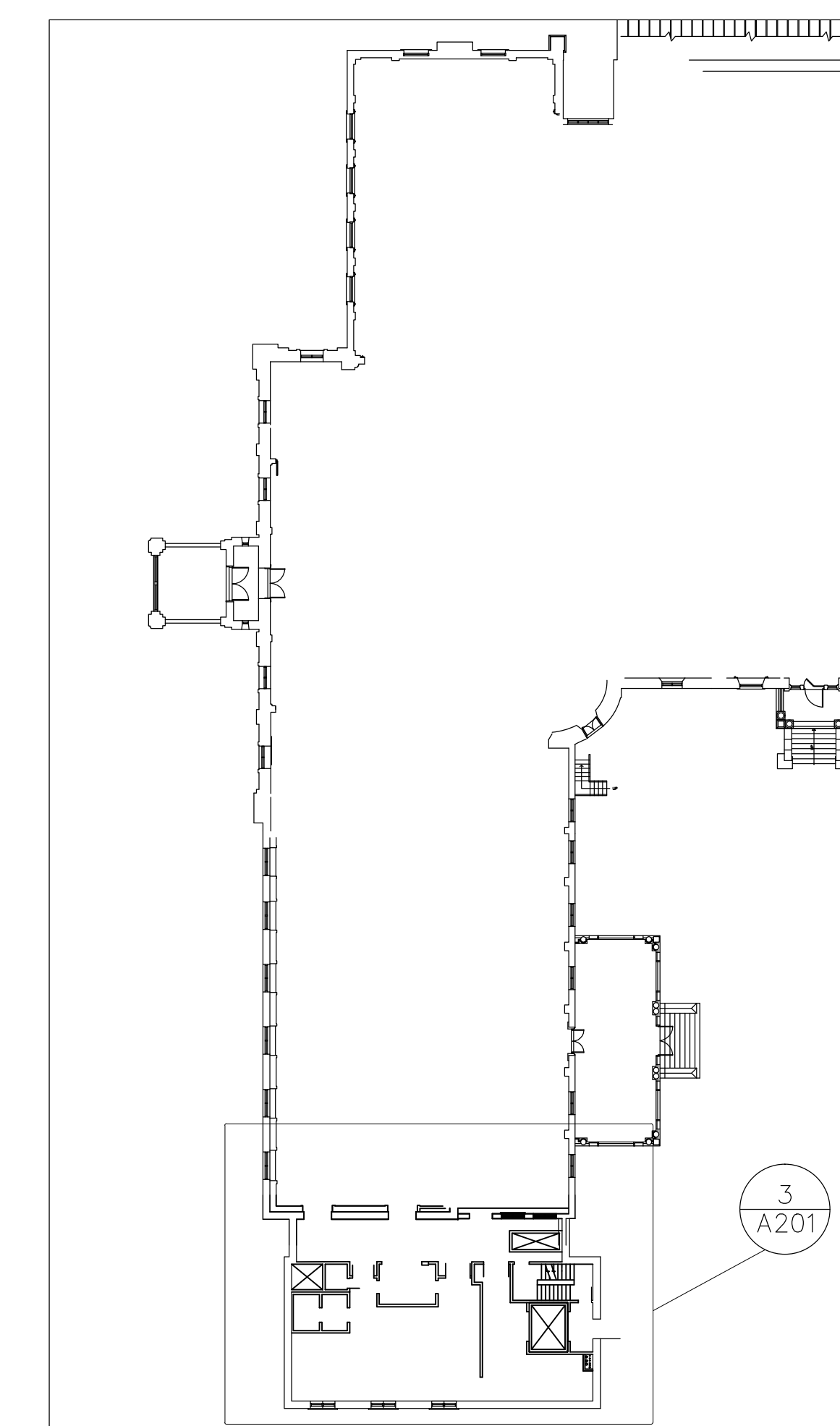
4 SECOND LEVEL ENLARGED PLAN  
SCALE: 1:50



3 FIRST LEVEL ENLARGED PLAN  
SCALE: 1:50



2 SECOND LEVEL KEY PLAN  
SCALE: N.T.S.



1 FIRST LEVEL KEY PLAN  
SCALE: N.T.S.

Issued or revised

no.	Description	Date
1	ISSUED FOR TENDER	08/12/2014

project

DOMESTIC HOT WATER SYSTEM MODIFICATIONS

drawing

FIRST AND SECOND LEVEL FLOOR PLAN

approved by D. COLE

designed by B. HALDENBY

drawn by B. HALDENBY

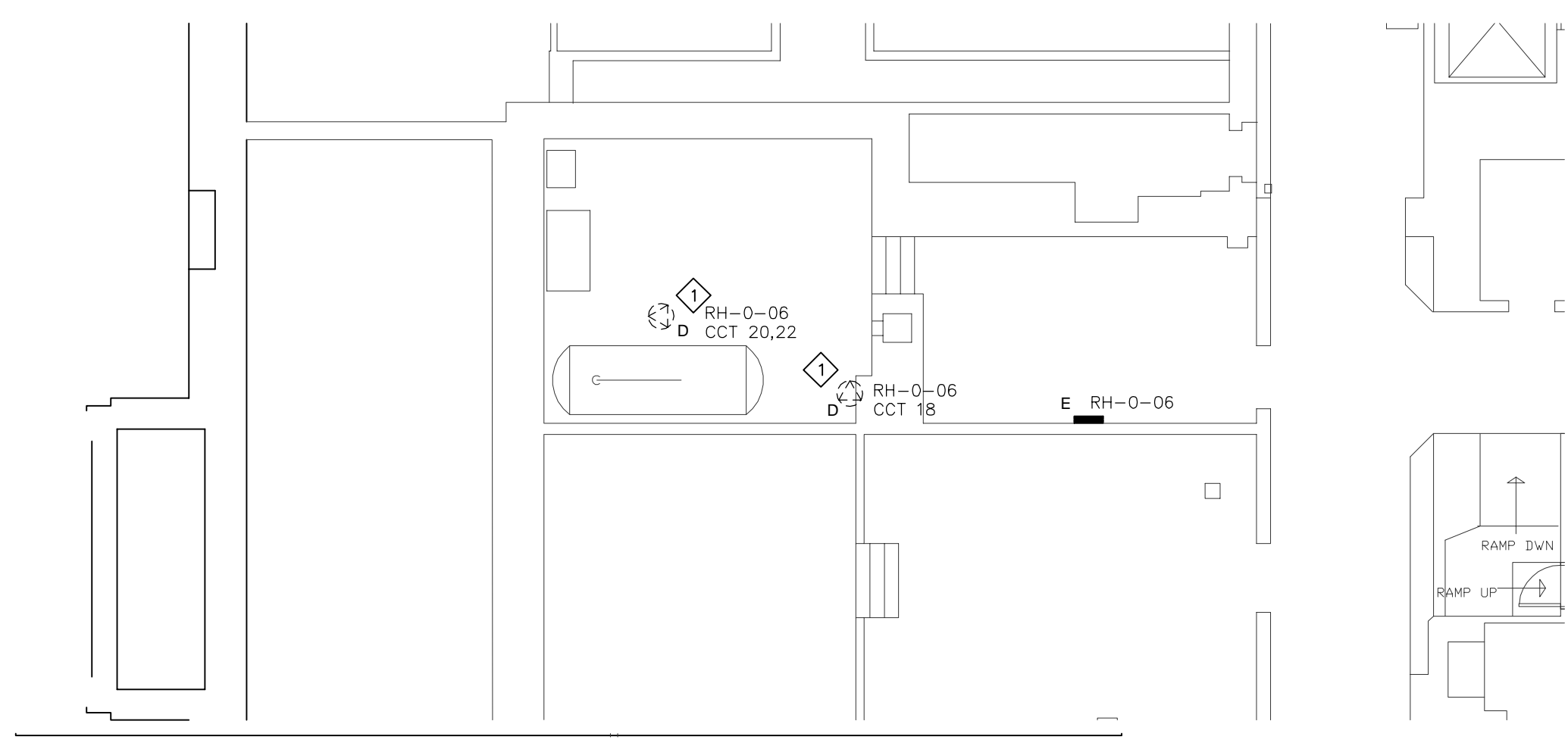
date DATE scale AS NOTED

NCC project no. sheet no.

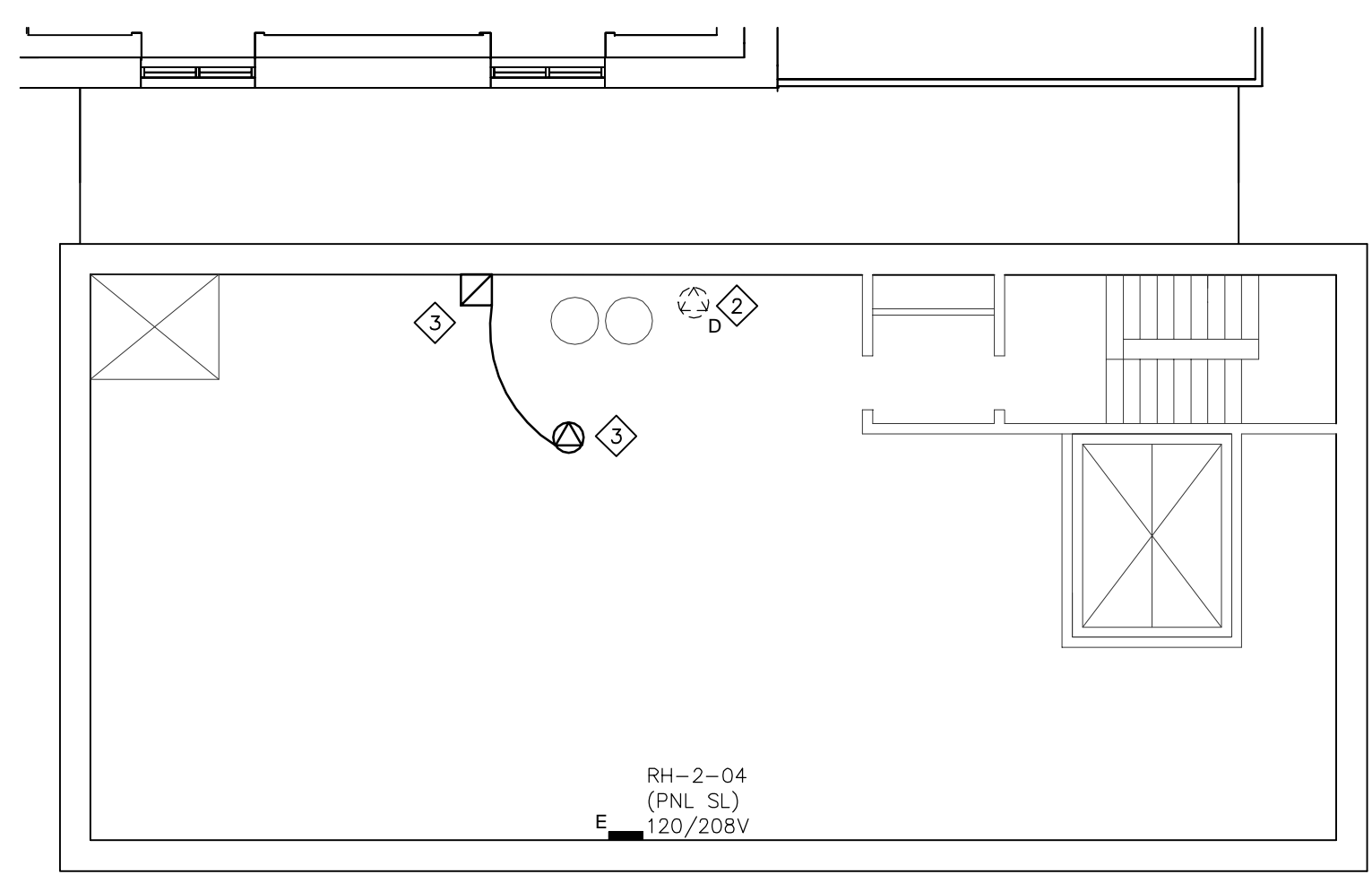
DC1110.25 A201

LEGEND	
SYMBOL	DESCRIPTION
<b>POWER</b>	
○	DIRECT CONNECTION
⊞	MANUAL STARTER
■	BREAKER PANEL
<b>NOTES</b>	
◇	REFER TO NOTE 1
E	DENOTES EXISTING TO REMAIN
D	DENOTES EXISTING TO BE REMOVED

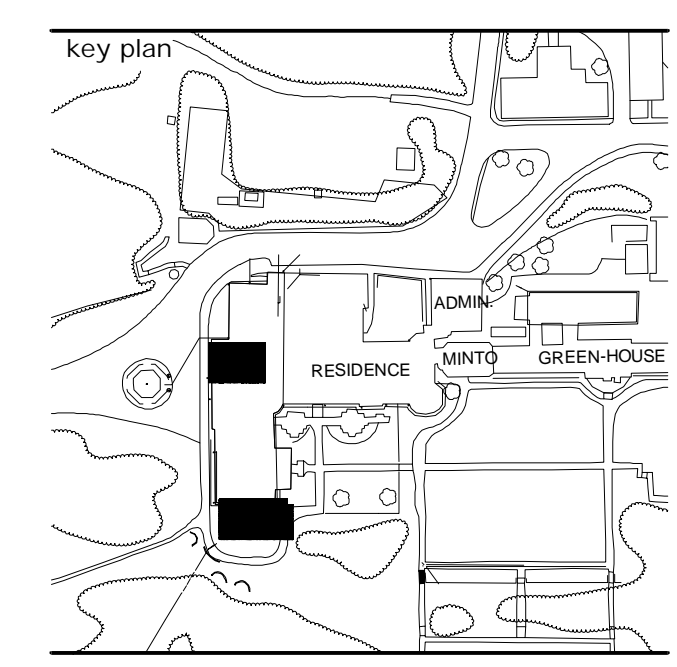
- NOTES:**
- ◇ DISCONNECT EXISTING PUMPS, REMOVE WIRING AND CONDUIT BACK TO SOURCE. MARK BREAKERS AS SPARE ON PANEL RH-2-06.
  - ◇ DISCONNECT EXISTING MOTOR PUMP. WIRING AND CONDUIT TO BE REVISED. EXACT PANEL, CIRCUIT IS UNKNOWN. CONTRACTOR SHALL TRACE EXISTING WIRING BACK TO SOURCE.
  - ◇ PROVIDE MANUAL STARTER AND CONNECT NEW MOTOR PUMP AS INDICATED. EXTEND EXISTING CONDUIT AND WIRING TO SUIT THE NEW INSTALLATION AND UPDATE PANEL DIRECTORY.



1 ELECTRICAL - BASEMENT POWER LAYOUT  
 E1  
 SCALE 1:100



2 ELECTRICAL - MECH ROOM POWER LAYOUT  
 E1  
 SCALE 1:100



Issued or revised

no.	description	date
1	ISSUED FOR TENDER	DEC 15, 2014

DOMESTIC HOT WATER SYSTEM MODIFICATIONS

ELECTRICAL POWER LAYOUT DEMO & NEW

approved by	M. MANSOUR
designed by	M. MANSOUR
drawn by	T. CLARK
date	NOV 28, 2014
scale	AS SHOWN
NCC project no.	
sheet no.	E1

LIST OF DRAWINGS

M101	DRAWING LIST, LEGEND, AND DETAILS
M201	BASMENT / MECHANICAL ROOM DEMOLITION AND NEW LAYOUT
M202	ATTIC SPACE DEMOLITION AND NEW LAYOUT

GENERAL

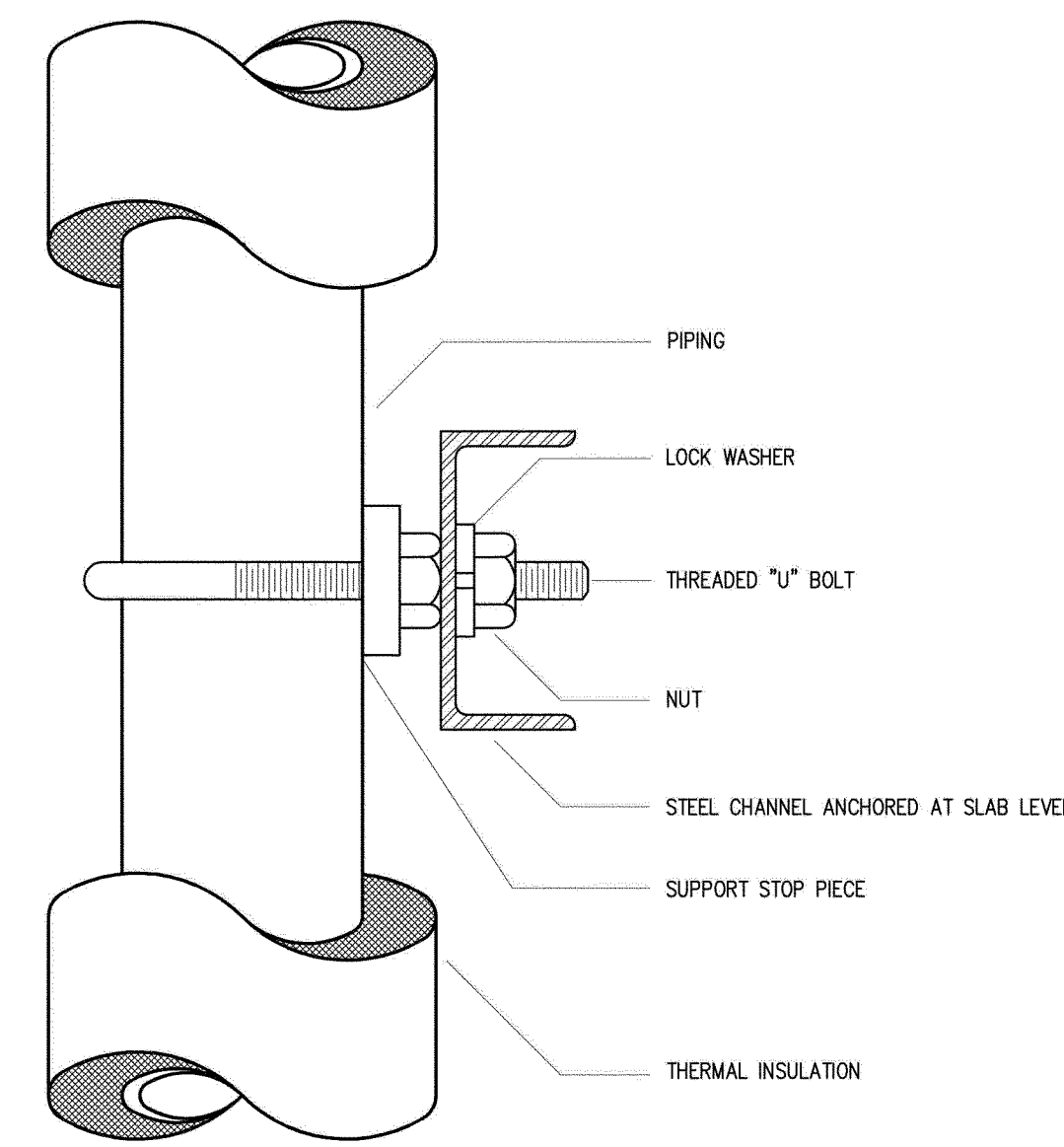
	UPWARD
	DOWNWARD
	TO REMAIN
	TO REMOVE
	DISMANTLING POINT
	CONNECTION POINT TO EXISTING
	CAPPED FOR FUTURE CONNECTION

PLUMBING

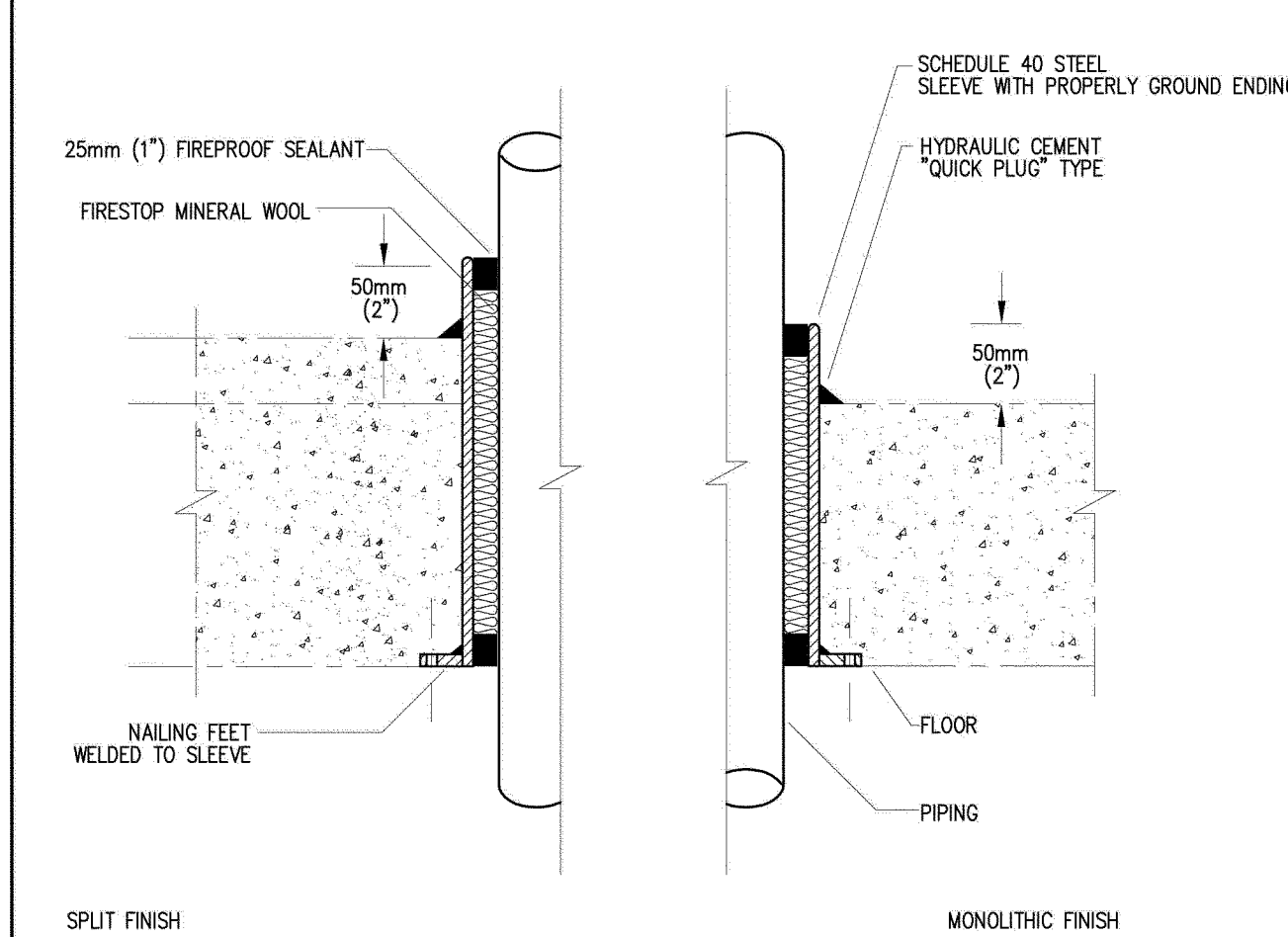
	CHECK VALVE
	REVERSED "T"
	UNION TYPE VALVE
	BALANCING VALVE
	STRAINER
	ISOLATION VALVE (BALL OR BUTTERFLY)
	SAFETY VALVE
	PRESSURE GAUGE
	THERMOMETER
	CIRCULATOR OR PUMP
	DOMESTIC COLD WATER
	DOMESTIC HOT WATER
	REGULATED DOMESTIC HOT WATER
	VACUUM BREAKER

CONTROLS

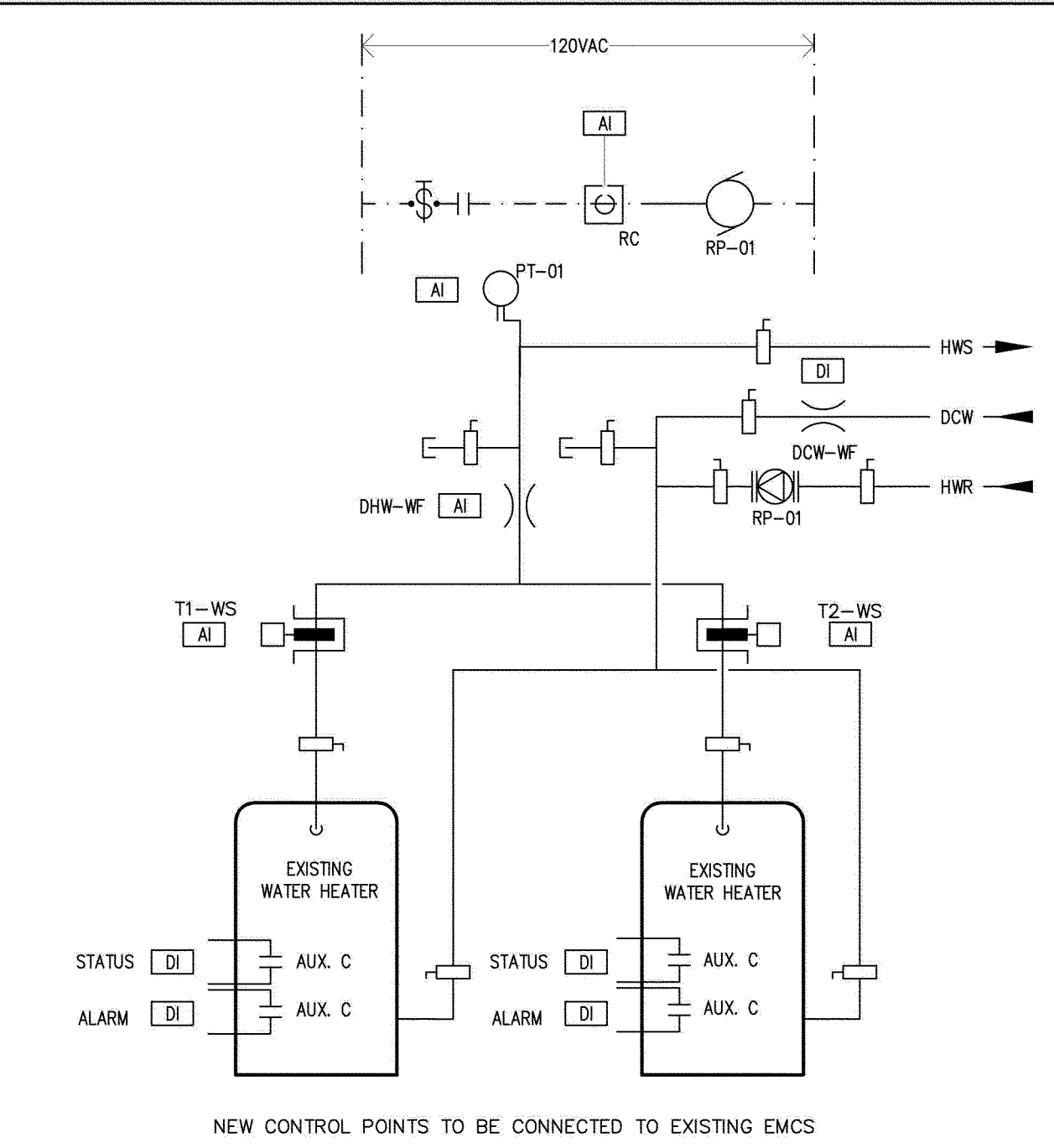
	PUMP
	ELECTRICITY (UNDER 70V)
	ELECTRICITY (70V AND ABOVE)
	NORMAL OPEN CONTACT
	NORMALLY CLOSED CONTACT
	MANUAL STARTER
	CURRENT RELAY
	ELECTRICAL MOTOR
	CENTRALIZED POINT (INPUT OR OUTPUT)
	AI ANALOG INPUT
	AO ANALOG OUTPUT
	DI DIGITAL INPUT
	DO DIGITAL OUTPUT
	PRESSURE DIFFERENTIAL SENSOR
	FLOW SENSOR
	TEMPERATURE SENSOR IN THERMOWELL



1 SUPPORT FOR VERTICAL PIPING IN SHAFTS (NTS)



3 SLEEVE FOR EXPOSED PIPE PASSING THROUGH A FLOOR (NTS)



4 CONTROLS SCHEMATIC (NTS)



issued or revised

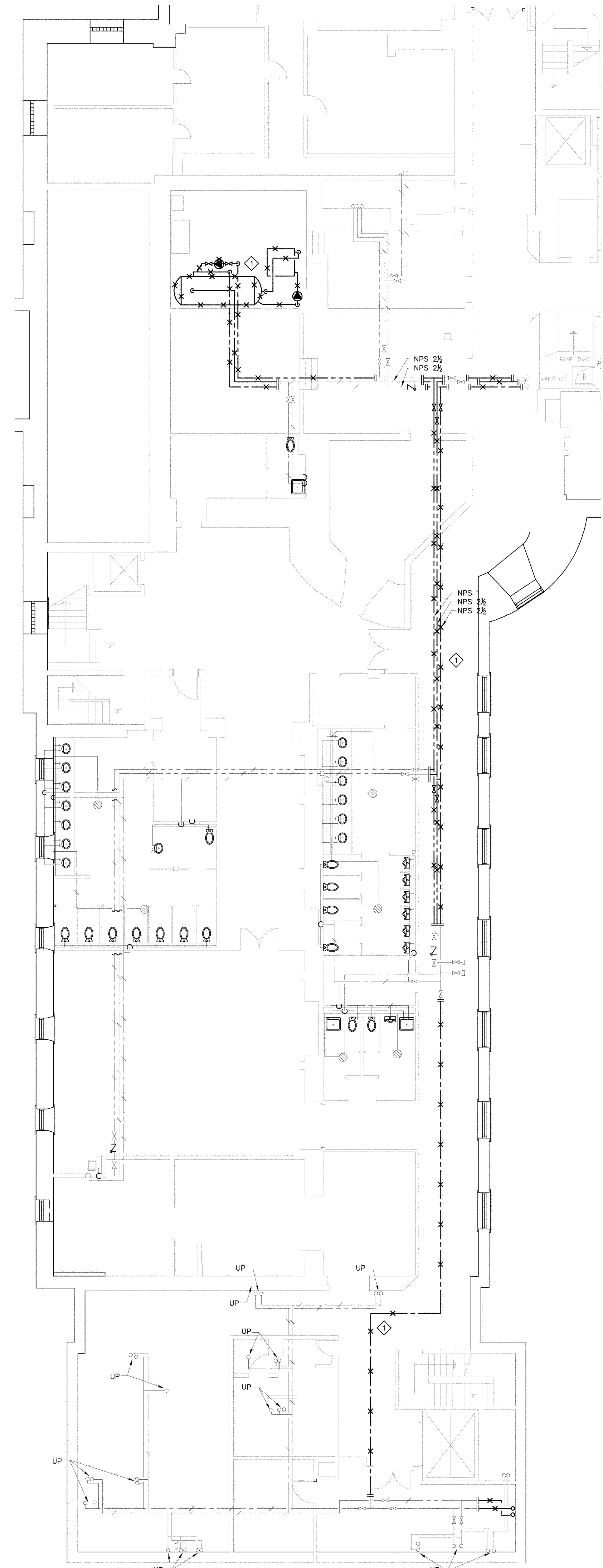
1	ISSUED FOR TENDER	DEC 15, 2014
no.	description	date

project

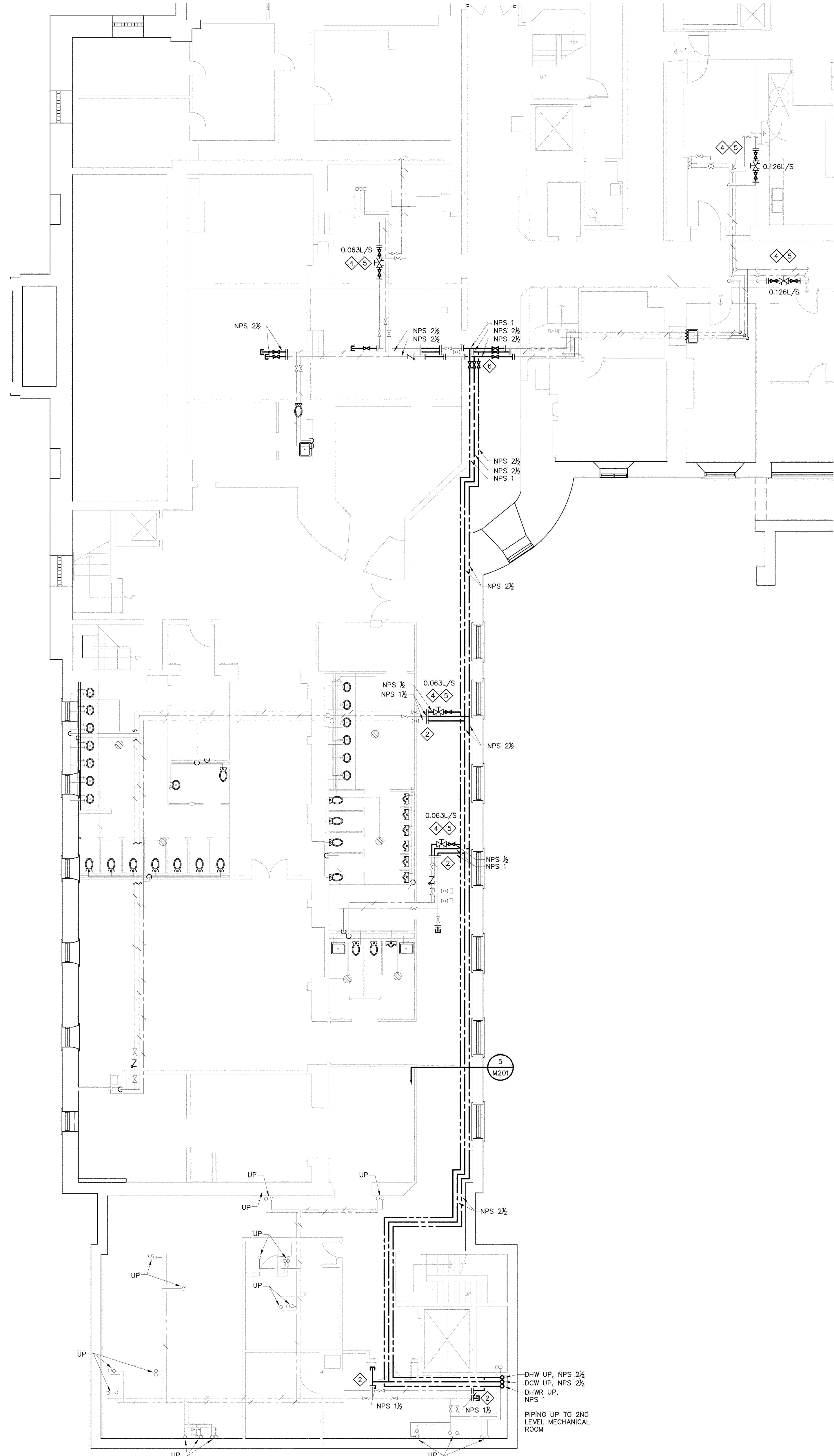
DOMESTIC HOT WATER SYSTEM MODIFICATIONS

DRAWING LIST, LEGEND AND DETAILS

approved by	P. ST-ONGE
designed by	J. FAUBERT
drawn by	J. FAUBERT
date	DEC 15, 2014
scale	AS SHOWN
NCC project no.	sheet no.

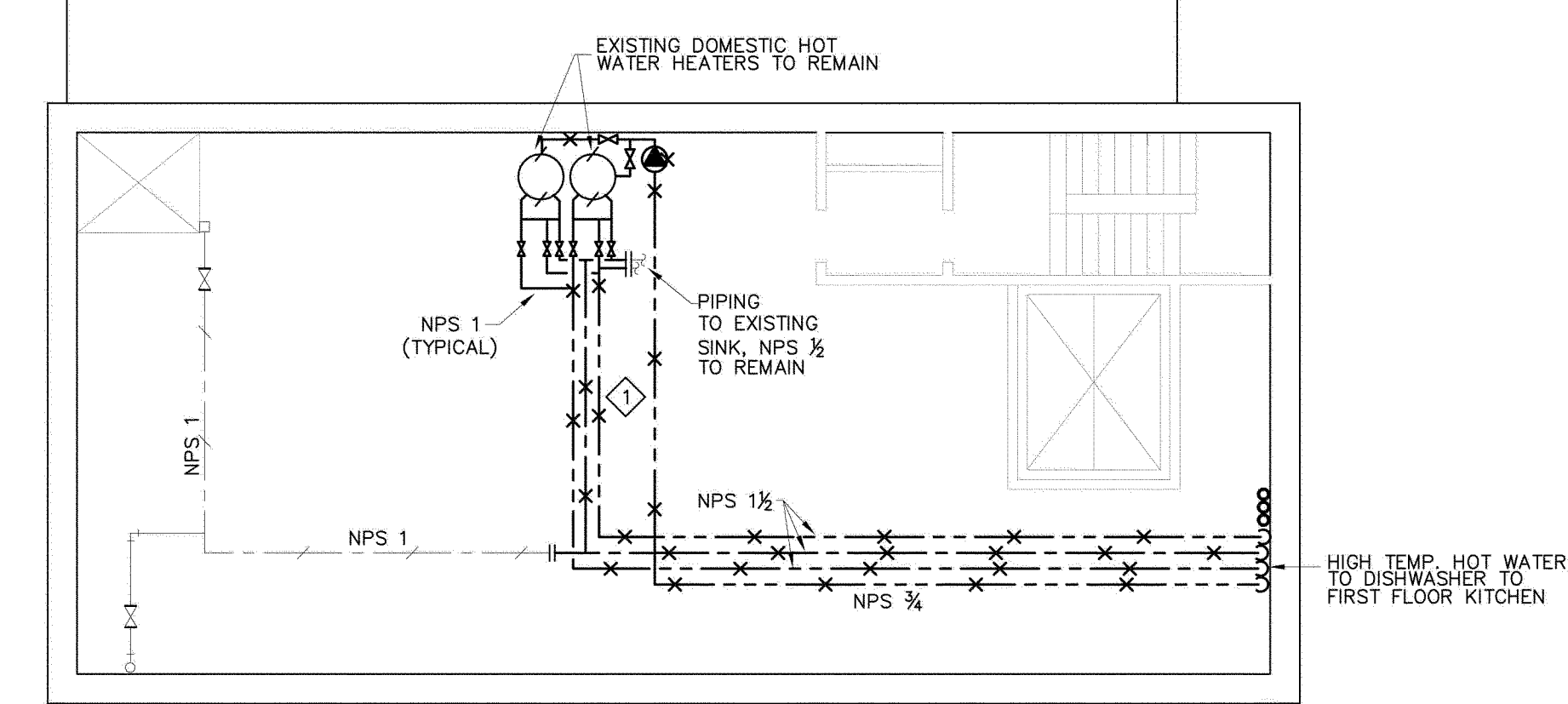


1 BASEMENT DOMESTIC WATER - DEMOLITION LAYOUT  
M201  
SCALE 1:100

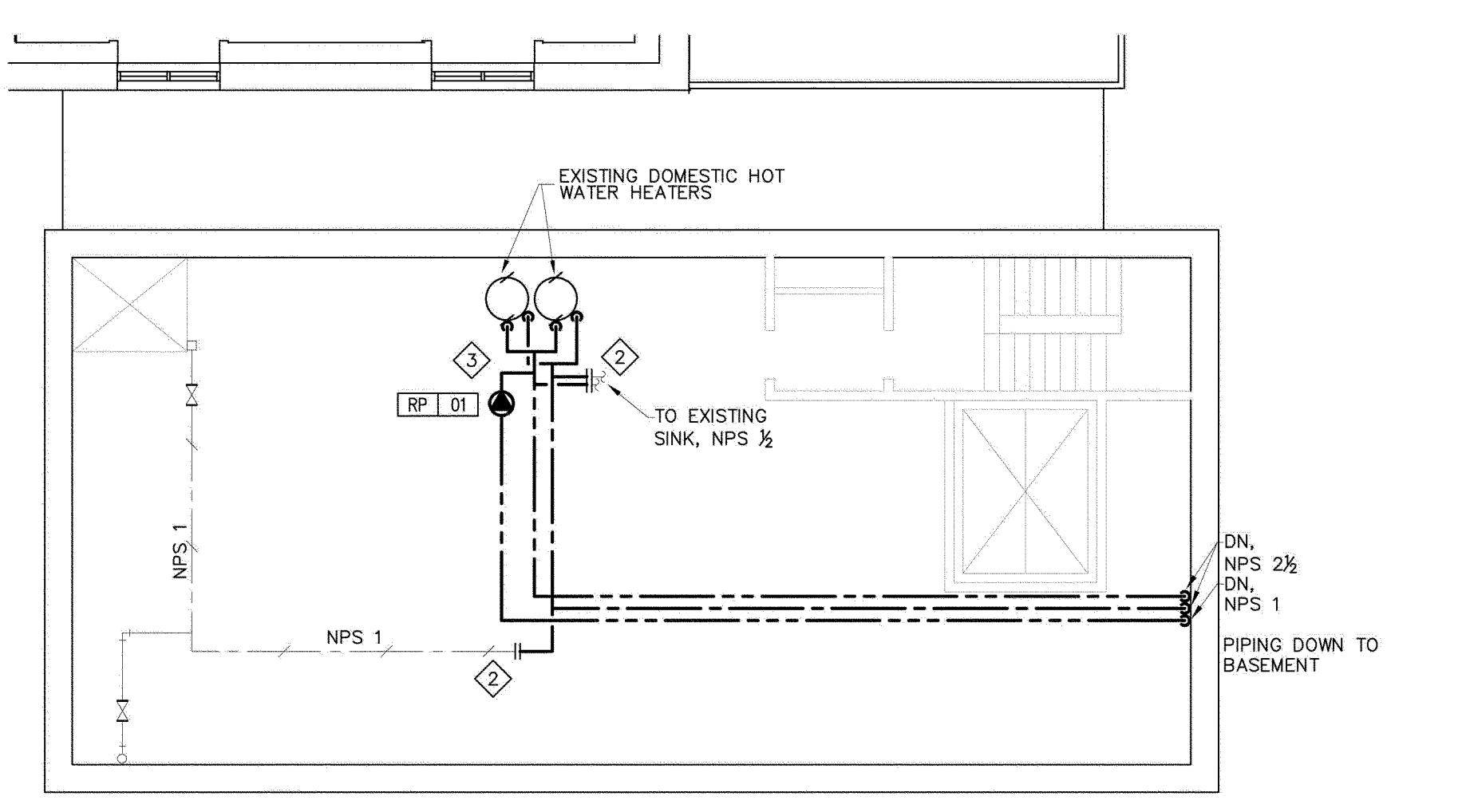


2 BASEMENT DOMESTIC WATER - NEW LAYOUT  
M201  
SCALE 1:100

- GENERAL NOTES:**
- DOMESTIC WATER SHUT DOWNS TO BE LIMITED TO ONE DAY.
  - COORDINATE ALL SHUT DOWNS WITH CLIENT.
  - MECHANICAL ROOM LOCATED 2 FLOORS ABOVE BASEMENT LEVEL.
  - CONTRACTOR TO VERIFY PIPING DIMENSIONS ON SITE PRIOR TO INSTALLATION.
  - REFER TO ARCHITECTURAL DRAWINGS FOR CEILING LAYOUTS.
- DRAWING NOTES:**
- DO NOT REMOVE HOT WATER TANK, HOT WATER HEATER, RE-CIRCULATION PUMP, PIPING, AND ALL ACCESSORIES TILL NEW DOMESTIC WATER LINES HAVE BEEN INSTALLED. KEEP EXISTING HOT WATER DISTRIBUTION IN WORKING ORDER TILL THE SWITCH OVER TO THE NEW LAYOUT IS READY.
  - CONNECT EXISTING DOMESTIC WATER BRANCHES TO NEW DOMESTIC WATER LINES.
  - REFER TO S/M201 FOR CONNECTION DETAILS.
  - SUPPLY AND INSTALL NEW NPS 3/4 BALANCING VALVE ON THE DOMESTIC HOT WATER RE-CIRCULATION LINE AND BALANCE TO FLOWS SHOWN ON DRAWINGS.
  - SUPPLY AND INSTALL ISOLATION VALVES (BALL) FOR THE BALANCING VALVES.
  - INSTALL THERMOWELL AND TEMPERATURE SENSOR, AND PRESSURE SENSORS ON THE DCW AND DHW PIPING. PROVIDE AND INSTALL ALL PIPING AND FITTINGS REQUIRED FOR A COMPLETE INSTALLATION, TO BE CONNECTED TO THE EMS.



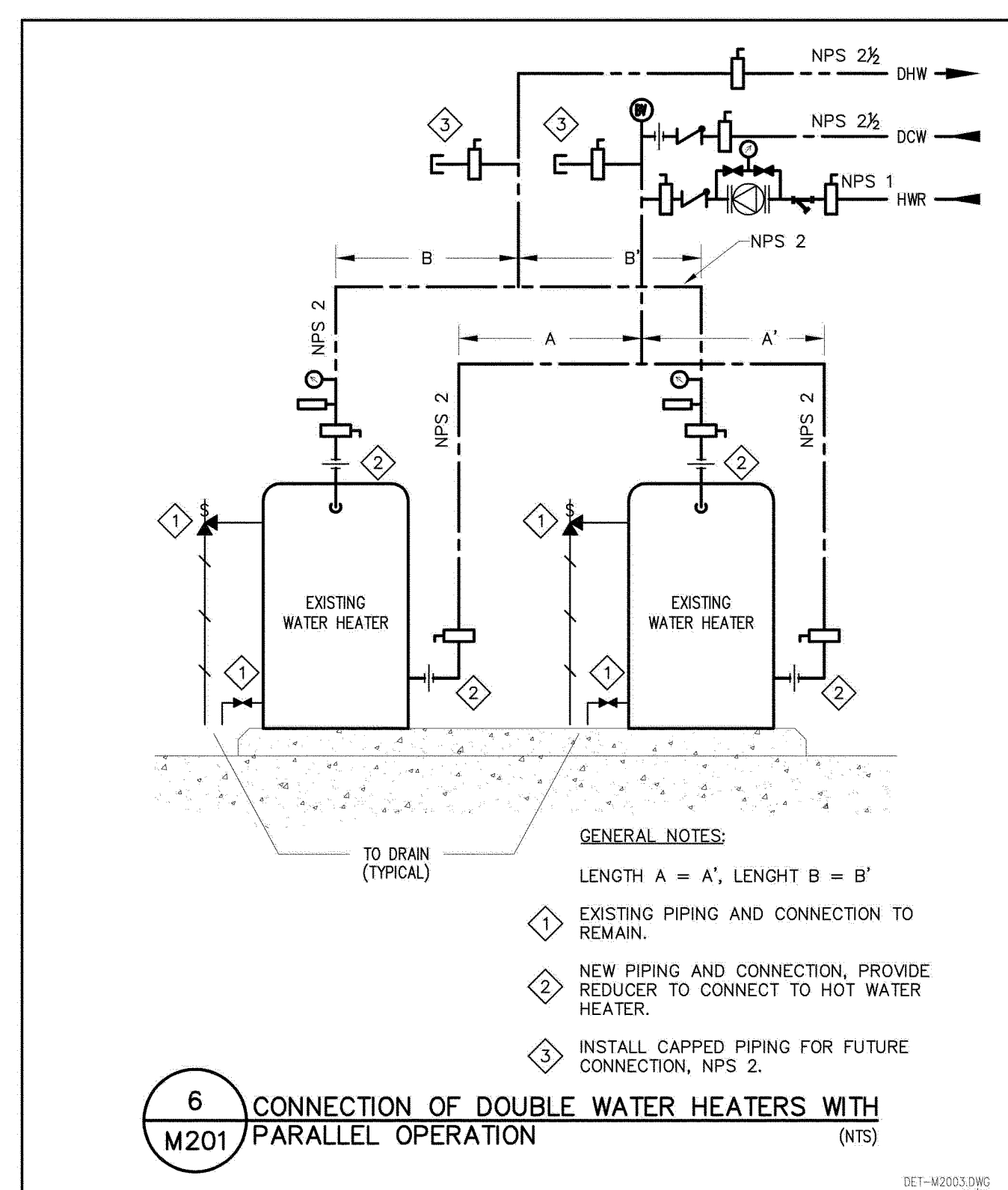
3 MECHANICAL ROOM DOMESTIC WATER - DEMOLITION LAYOUT  
M201  
SCALE 1:100



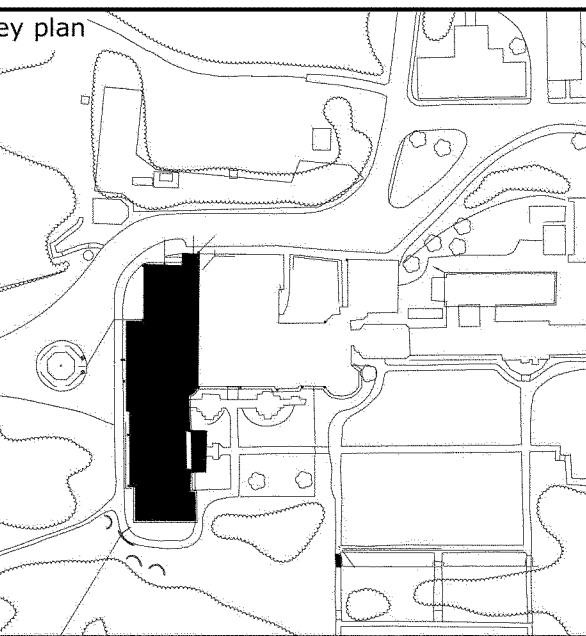
4 MECHANICAL ROOM DOMESTIC WATER - NEW LAYOUT  
M201  
SCALE 1:100



5 HALLWAY SECTION VIEW  
M201  
NTS



6 CONNECTION OF DOUBLE WATER HEATERS WITH PARALLEL OPERATION  
M201  
NTS



Issued or revised

no.	description	date
1	ISSUED FOR TENDER	DEC 15, 2014

project

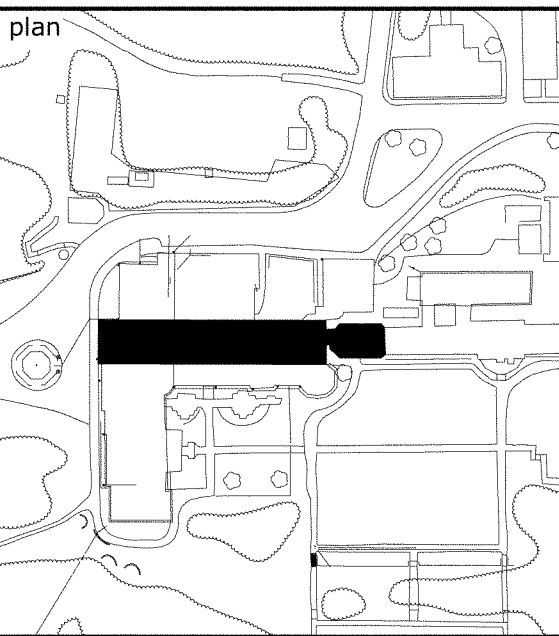
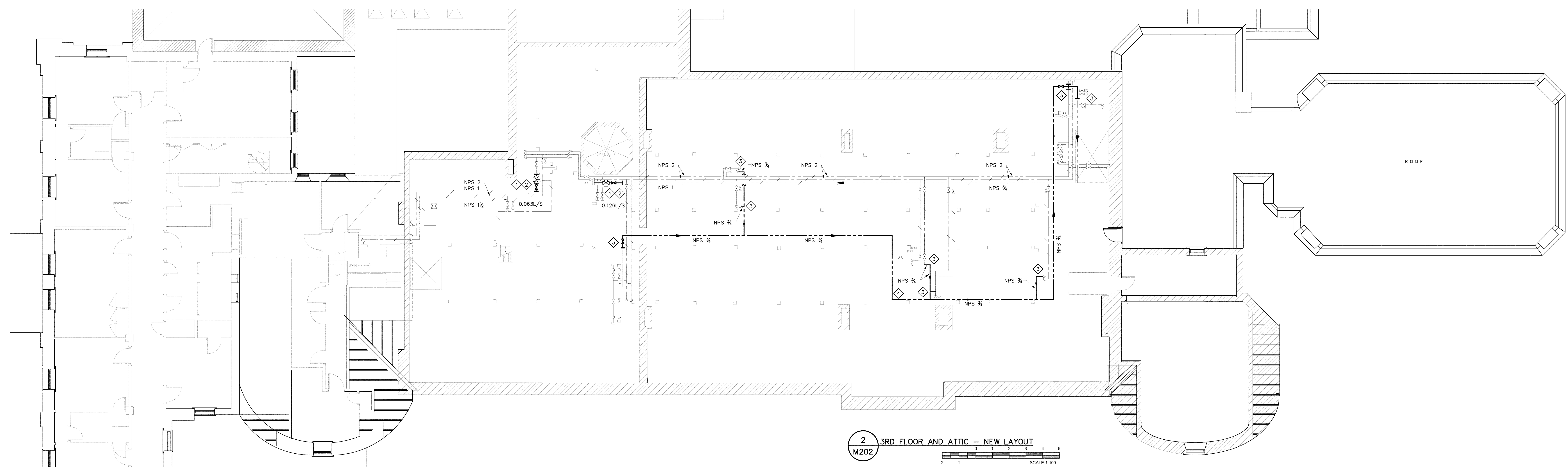
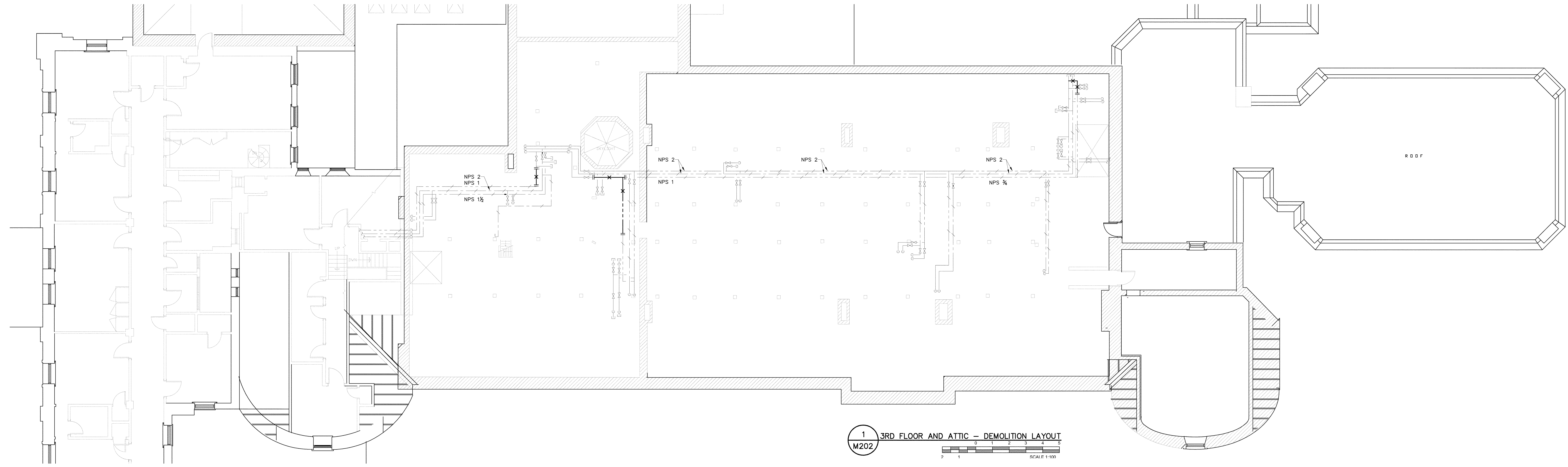
DOMESTIC HOT WATER SYSTEM MODIFICATIONS

drawing

BASEMENT / MECHANICAL ROOM DEMOLITION AND NEW LAYOUT

approved by P. ST-ONGE  
designed by J. FAUBERT  
drawn by J. FAUBERT  
date NOV 28, 2014 scale AS SHOWN  
NCC project no. sheet no.

- GENERAL NOTES:**  
DOMESTIC WATER SHUT DOWNS TO BE LIMITED TO ONE DAY.  
COORDINATE ALL SHUT DOWNS WITH CLIENT.  
LIMITED WALKWAYS IN THE ATTIC SPACE. PROVIDE TEMPORARY FLOORING TO COMPLETE THE INSTALLATION.
- DRAWING NOTES:**  
◇ SUPPLY AND INSTALL NEW NPS ½ BALANCING VALVE ON THE DOMESTIC HOT WATER RE-CIRCULATION LINE AND BALANCE TO FLOWS SHOWN ON DRAWINGS.  
◇ SUPPLY AND INSTALL NPS ¾ ISOLATION VALVES (BALL) FOR THE BALANCING VALVES.  
◇ CONNECT NEW DOMESTIC HOT WATER RE-CIRCULATION LINE TO EXISTING PIPING.  
◇ INSTALL THERMOWELL AND TEMPERATURE SENSOR, AND PRESSURE SENSOR ON THE DCM AND DHW PIPING. PROVIDE AND INSTALL ALL PIPING AND FITTINGS REQUIRED FOR A COMPLETE INSTALLATION, TO BE CONNECTED TO THE EMCS.



Issued or revised

no.	description	date
1	ISSUED FOR TENDER	DEC 15, 2014

DOMESTIC HOT WATER SYSTEM MODIFICATIONS

ATTIC SPACE DEMOLITION AND NEW LAYOUT

approved by P. ST-ONGE  
designed by J. FAUBERT  
drawn by J. FAUBERT  
date NOV 28, 2014 scale AS SHOWN  
NCC project no. sheet no.