



**RETURN BIDS TO:  
RETOURNER LES SOUMISSIONS A :**

Visitor Center – RCMP/Centre des Visiteurs– GRC  
73 Leikin Drive, Bldg., M1, Mailstop #15  
Ottawa, Ontario K1A 0R2  
Attn: Sonya Dupont

**SOLICITATION  
AMENDMENT**

**MODIFICATION DE  
L'INVITATION**

The referenced document is hereby revised; unless otherwise indicated, all other terms and conditions of the Solicitation remain the same.

Ce document est par la présente révisé; sauf indication contraire, les modalités de l'invitation demeurent les mêmes.

Comments: - Commentaries :

<b>Title – Sujet</b> Stand Up Narrow Aisle Electric Double Reach Lift Truck		<b>Date</b> January 30, 2015
<b>Solicitation No. – N° de l'invitation</b> 201500306		<b>Amendment No. – N° de la modification</b> 001
<b>Client Reference No. - No. De Référence du Client</b> 201500306		
<b>Solicitation Closes – L'invitation prend fin</b>		
<b>At / à :</b>	2:00 PM	EST (Eastern Standard Time) HNE (heure normale de l'Est)
<b>On / le :</b>	February 9, 2015	
<b>F.O.B. – F.A.B</b>	<b>GST – TPS</b>	<b>Duty – Droits</b>
<b>Destination of Goods and Services – Destinations des biens et services</b> See herein — Voir aux présentes		
<b>Instructions</b> See herein — Voir aux présentes		
<b>Address Inquiries to – Adresser toute demande de renseignements à</b> Krista Meloche - Procurement Officer		
<b>Telephone No. – No. de téléphone</b> 613-843-3804		<b>Facsimile No. – No. de télécopieur</b> 613-825-0082

<b>Delivery Required – Livraison exigée</b> See herein — Voir aux présentes	<b>Delivery Offered – Livraison proposée</b>
<b>Vendor/Firm Name, Address and Representative – Raison sociale, adresse et représentant du fournisseur/de l'entrepreneur:</b>	
<b>Telephone No. – No. de téléphone</b>	<b>Facsimile No. – No. de télécopieur</b>
<b>Name and title of person authorized to sign on behalf of Vendor/Firm (type or print) – Nom et titre de la personne autorisée à signer au nom du fournisseur/de l'entrepreneur (taper ou écrire en caractères d'imprimerie)</b>	
<b>Signature</b>	<b>Date</b>



This amendment is raised to address the following:

- To respond to questions received during the solicitation period; and
- To document the information and questions received during the optional site visit held January 22, 2015

**1) QUESTIONS AND ANSWERS RECEIVED DURING SOLICITATION PERIOD:**

Question 1: Can you please provide the maximum pallet dimensions (HxWxL) and the maximum weight required?

Answer 1: The maximum pallet dimensions are 48"x48"x48" and the maximum weight required is 2500 lbs.

Question 2: At Annex A

Section 3.3.1 Forklift Performance

e) Under clearance: The unit must have a minimum under clearance of 3.9"

This is not an available option on a narrow-aisle forklift. The maximum under clearance available is 3". If this option was selected, it would increase the height of the baselegs to 6" and would no longer meet specifications outlined in b) Heights: v. The base arm assemblies must not exceed 5". These specifications would only allow for a 1.1" thick baseleg which is not possible.

Would the following specification be acceptable?

- e) Under clearance: 2"
- b) Baseleg height: 5"

Answer 2: Yes the above is acceptable.

Replace the spec at Annex A, Section 3.3.1 Forklift Performance e) Under clearance to read: The unit must have a minimum under clearance of 2".

Question 3: At Annex A

3.3.1 Forklift Performance

c) Widths: iii. The forward base arm assemblies (outriggers) must not exceed 43"

- i) Is this in reference to the overall width of the baselegs, combined with the baseleg opening?
- ii) Would the following specification be acceptable?  
Baseleg width of 5.25" and baseleg opening of 33" - for total overall baseleg width of 43.52

Answer 3:

- i) Yes, the spec is the overall width from the outside of one baseleg to the outside of the other baseleg.
- ii) Yes, the specs listed are acceptable. Our goal is to put the baselegs partially under the bottom rack with the ability to place two pallets side by side on each racking level in both our first and second layer deep of racking.

Question 4: At Annex A

3.4 Application Equipment

a) Forks i. The unit must be equipped with hydraulically extendable forks that are no more than 42 inches long when retracted and extendable to a distance of 72" when fully extended.

Please clarify the request for 72" when fully extended? Please clarify this dimension? From what point to what point of the truck requires this dimension? Please supply the depth to reach the second pallet?



Answer 4: RCMP need to reach into the double rack, to pick the pallet. We want the hydraulic movement side shift housing to extend at least 55" so we can reach into the second rack. Example picking pallet up in 2<sup>nd</sup> racking, when lifted the forklifts hydraulics need to have the ability to retract 55 inches or more.

If the forklift has no forks on the forklift the extending hydraulics/side shift housing would still need to extend to 55".

Refer to Figure 4.1 below:

We are interested in 55" total extended distance

This means (A) the area the extension parts take up when fully retracted, counts for 13.6" of the 55" total. The real movement is about 42" (C) for the total of 55.6" (B).

The extended total distance ends at the front of the forks (D).

The final distance for full extension must be is 55" or greater. This is from fully retracted (A) to fully extended (D).



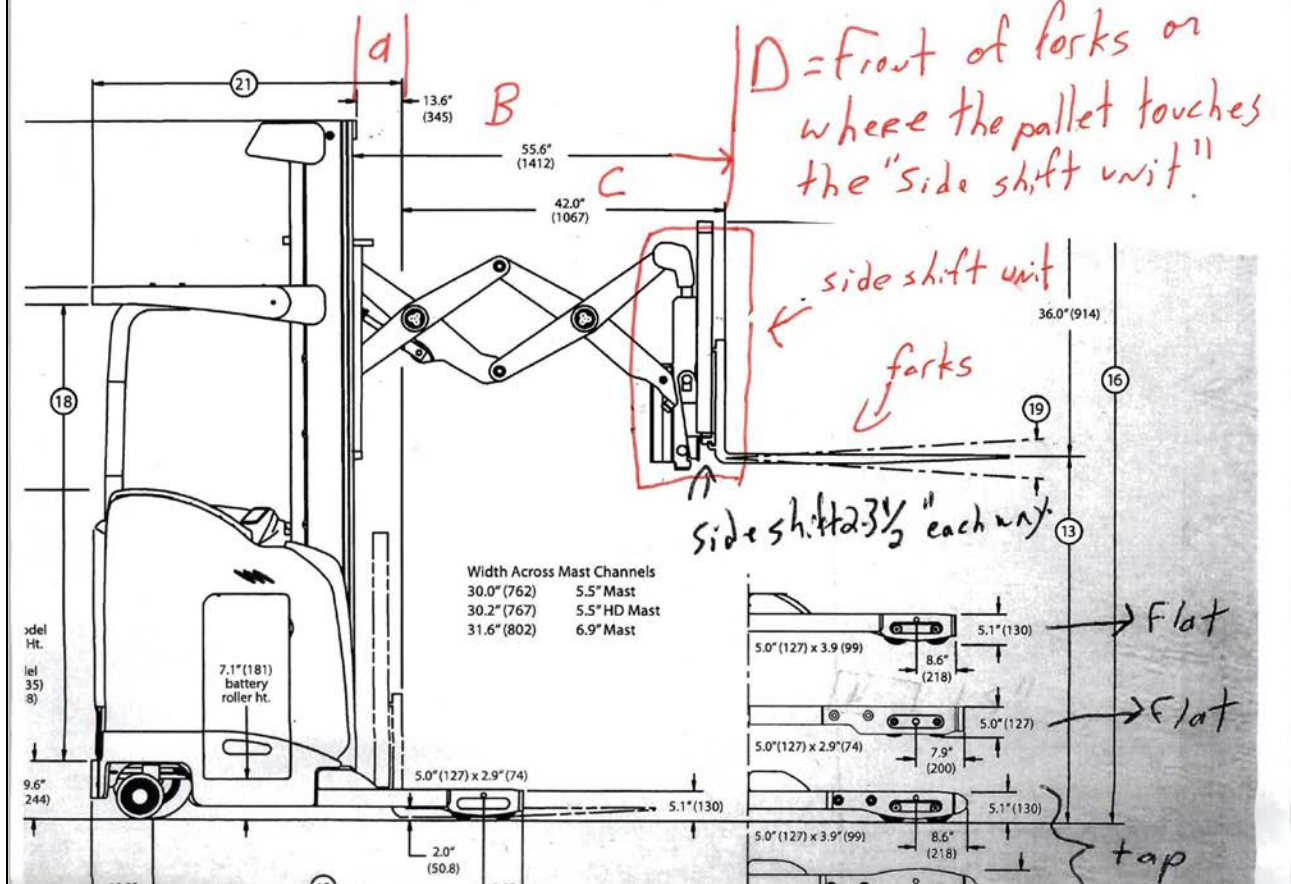
Figure 4.1

$13.6'' + 42'' = 55.6''$   
 $a + c = B$  (ability to place a pallet 55'' into the 2<sup>nd</sup> depth of racking)

$a$  = The space the extension arms (hydraulic hoses) when fully retracted.

$c$  = The actual movement of the extension arms or the forks & sideshift unit

$D$  = Front of forks or where the pallet touches the "side shift unit"





Question 5: At Annex A

3.4 Application Equipment

a) Forks ii. The overall length to the fork with side shift installed must not exceed 48”.

*The overall length to fork face:* Please clarify this dimension? From what point to what point of the truck requires this dimension?

Answer 5: Please disregard the words “with side shift installed must not exceed 48”, we are interested in 44 or 48 inch forks.

Delete:

3.4 Application Equipment

a) Forks ii. The overall length to the fork with side shift installed must not exceed 48”.

Insert:

3.4 Application Equipment

a) Forks ii. Forks must be 44” or 48”.

Question 6: At Annex A

3.4 Application Equipment

a) Forks iii. The forks must be manually adjustable and lockable on the side shift carriage from completely together to full width of the carriage.

Please supply the pallet dimension being handled that require this feature.

Answer 6: Completely together should read “our smallest pallets are 24” wide the outside dimension of the forks has to be 20” to pick up these pallets”. These small pallets are then placed and strapped onto a full size pallet before they are put in the racking system.

Question 7: At Annex A

3.5 Controls

a) The unit must be equipped with individual control levers to independently control drive, lift/lower, reach, tilt, side shift and hydraulic fork extension operation.

All current model narrow aisle reach trucks have a multi-functional control handle. Is the following control handle acceptable: Simultaneous Function Control Handle/Single Axis/Relaxed Grip.

Answer 7: A multi-functional control handle is fine.

Question 8: At Annex A

3.5 Controls

b) The unit must be equipped with programmable safety lift limit switch which the operator can override or change lifting height capabilities.

Lift limit switches must be programmed by technician, not by operator as operator controlling would defeat the purpose of the limit switch if it could be easily changed/overridden by operator. Would a switch that is programmable by technician only be acceptable to meet the criteria required?

Answer 8: Yes, having a technician do the adjustments is O.K

Question 9: At Annex A

3.6 Electrical System

a) The unit must be provided with a 24 volt electrical system

To meet the contract requirement of 3000lb capacity at 24” load center, the truck must be 36volt electrical system. Would a 36 volt truck be acceptable to submit for consideration?



Answer 9: Yes as long as it can operate in our aisles.

Question 10: At Annex A

3.9 Operator Presence System

The unit must be equipped with a dual pedal operator presence system that immobilizes the travel and load controls when the operator is not in the operator's compartment.

A single deadman pedal, which must be pressed before truck will travel, allows for more body positioning options for the operator, allowing for less operator fatigue. This is combined with 'auto position hold' which will not allow the truck to move (even with deadman depressed) until travel is requested by operator through movement of the handle.

Would a single deadman pedal be acceptable?

Answer 10: Yes, One deadman pedal is acceptable.

---

## 2) Optional Site Visit held January 22, 2015

Below presents the information discussed and questions raised during the optional site visit.

Information:

1. Discussed reason for requirement. RCMP cannot reach the middle rack without a fork capable of extension.
2. Attendees were shown the narrow row, which was measured to be 102" at the narrowest point.
3. Facility manager pointed out that the 60 amp, 600 single phase power specification is very important, refer to 3.16 Charger, subsection c).

Questions:

1. Are there any issues with hitting ceiling lights or pipes? No
2. What is model and serial number of current truck: Raymond, Model EASI R3OTT, Serial #ET-D-03-12607
3. Is RCMP interested in trading in current truck? No
4. How detailed does the compliance matrix need to be filled out? Procurement responded by re-iterating the instructions at the top of Annex C and indicating that less may not be more.

ALL REMAINING TERMS AND CONDITIONS REMAIN THE SAME