

## NOTIFICATION OF REVISION

Public Works and Government  
Services Canada

### Addendum No. 4

---

Solicitation Name: CFIA GTA Laboratory Expansion and Fit-up  
Solicitation Number: R.061999.001

Date: Tuesday, February 4, 2015

---

## 1. MECHANICAL

### 1.1 SPECIFICATIONS

#### .1 Section 224203 Commercial Plumbing Fixtures:

##### .1 Revise item 2.3.9.1 to read as follows,

##### “.1 S-1 Corrosion Resistant Lab Sink

.1 Refer to specification section 12 35 53 - Laboratory Sinks, point 2.7 for sink specification.

##### .2 Faucets & Accessories:

.1 Sample Reception & Microbiology Lab Sinks - Electronic faucet, chrome plated brass body, 8.3 LPM, non-aerating laminar spray outlet, gooseneck spout 115 mm projection reach, infrared sensor with screw adjustable range, under counter filtered solenoid valve with serviceable strainer filter, module control assembly with splash proof junction box and mounting kit, 24VAC 50/60Hz, vandal proof box. Provide tee, adaptors and flex. copper tubing to suit installation. 15 VA power required per unit. Box mount hard wired transformer, **120 VAC/ 24 VDC**, 50 VA. Below deck mechanical mixing valve, brass body, 9.5 mm compression fittings on inlet and outlet, integral check valves. Screwdriver adjustment temperature dial with scale: COLD-HOT. Chrome plated polished brass Faucet Supplies, commercial duty 1/4 turn ball valve angle stops, 13 mm I.D. Inlet x 127 mm horizontal extension tubes, combination V.P. Loose key handle, escutcheon and flexible copper riser. P-Trap, 38 mm size, box flange and seamless tubular wall bend.”

.2 Section 224203 Commercial Plumbing Fixtures:

.1 Add item 2.3.9.2 to read as follows,

“.2 S-2 Small Stainless Steel Dump Sink

.1 Refer to specification section 12 35 53 - Laboratory Sinks, point 2.7 for sink specification.

1. Faucet – Mixing faucet, deck mounted, swing spout, 200mm centres for hot and cold water, brass bar with polished chrome plated finish, self-contained compression valve with replaceable stainless steel seats, 100mm forged brass wrist blade handles, 225mm swing spout, (2) 32mm male shanks with 8mm OD flexible copper tube inlets, centre fitting with 8mm NPT male inlet, furnished complete with flexible PVC hoses, centre tee fitting, locknuts and washers. 8mm NPS female outlet with removable aerator. Faucet factory assembled and tested prior to shipment. Chrome plated polished brass Faucet Supplies, commercial duty 1/4 turn ball valve angle stops, 13 mm I.D. Inlet x 127 mm horizontal extension tubes, combination V.P. Loose key handle, escutcheon and flexible copper riser. P-Trap, 38 mm size, box flange and seamless tubular wall bend.
2. Pre-Rinse Unit – Deck mounted, self-closing valve with replaceable stainless steel seat, rubber bound spray head, nylon handle, stainless steel squeeze handle with plastic cover, 35mm hole in deck, 25mm IPS mounting shank with locknut, 2438mm high pressure reinforced PVC hose 10mm NPT male swivel inlet.”

.2 Section 224203 Commercial Plumbing Fixtures:

.1 Add item 2.4.11.2 to read as follows,

“.2 EW-2 Eyewash Counter Mounted for new Microbiology Lab Sink (Middle) - counter mounted, eye/face wash and body spray, single inverted directional laminar flow head with integral flow control, chrome plated brass vacuum breaker, 2.44 m green hose with chrome plated swivel fitting, chrome plated brass stay open squeeze lever valve, flow rate of 24 LPM, universal sign. Certified by CSA to meet the ANSI Z358.1 Standard for Emergency Eyewash and Shower Equipment. Thermostatic Mixing Valve for Eyewash or Eye/Face Wash , modular brass design with one piece casting, efficient funnel design with turbulent hot water passages to improve mixing at low flow rates and enhance temperature

control, 13 mm N.P.T. Outlet, unit employ with a paraffin filled thermostatic mixing element, 26 °C factory set temperature, standard 16 °C - 32 °C temperature range, 37.9 LPM flow capacity at 207 kPa pressure drop across the valve, 14.4 LPM bypass flow rate at 30 psid.”

.3 Section 224203 Commercial Plumbing Fixtures:

.1 Add item 2.4.11.3 to read as follows,

“.3 DS-1 Drench Shower - pedestal mounted, drench shower, hydrodynamic designed ABS plastic shower head with self-regulating flow control, chrome plated brass stay open ball valve with stainless steel ball and stem, stainless steel pull rod with triangular handle, galvanized steel pipe with cast iron floor flange, flow rate of 75.7 LPM, 32 mm waste, universal sign. Certified by CSA to meet the ANSI Z358.1 Standard for Emergency Eyewash and Shower Equipment. **Floor Drain**, epoxy coated cast iron, anchor flange, 127mm adjustable round nickel bronze strainer, reversible clamping collar with primary & secondary weepholes. Provide p-trap for drain. Thermostatic Mixing Valve for Eyewash or Eye/Face Wash , modular brass design with one piece casting, efficient funnel design with turbulent hot water passages to improve mixing at low flow rates and enhance temperature control, 13 mm N.P.T. Outlet, unit employ with a paraffin filled thermostatic mixing element, 26 °C factory set temperature, standard 16 °C - 32 °C temperature range, 37.9 LPM flow capacity at 207 kPa pressure drop across the valve, 14.4 LPM bypass flow rate at 30 psid.”

## 1.2 DRAWINGS

.1 Drawing M-3.01, M-3.02 & M-3.03, Level 3 Plumbing Plan Phase 1, 2 & 3.

.1 Revise plumbing fixture tags as shown on the attached drawings.

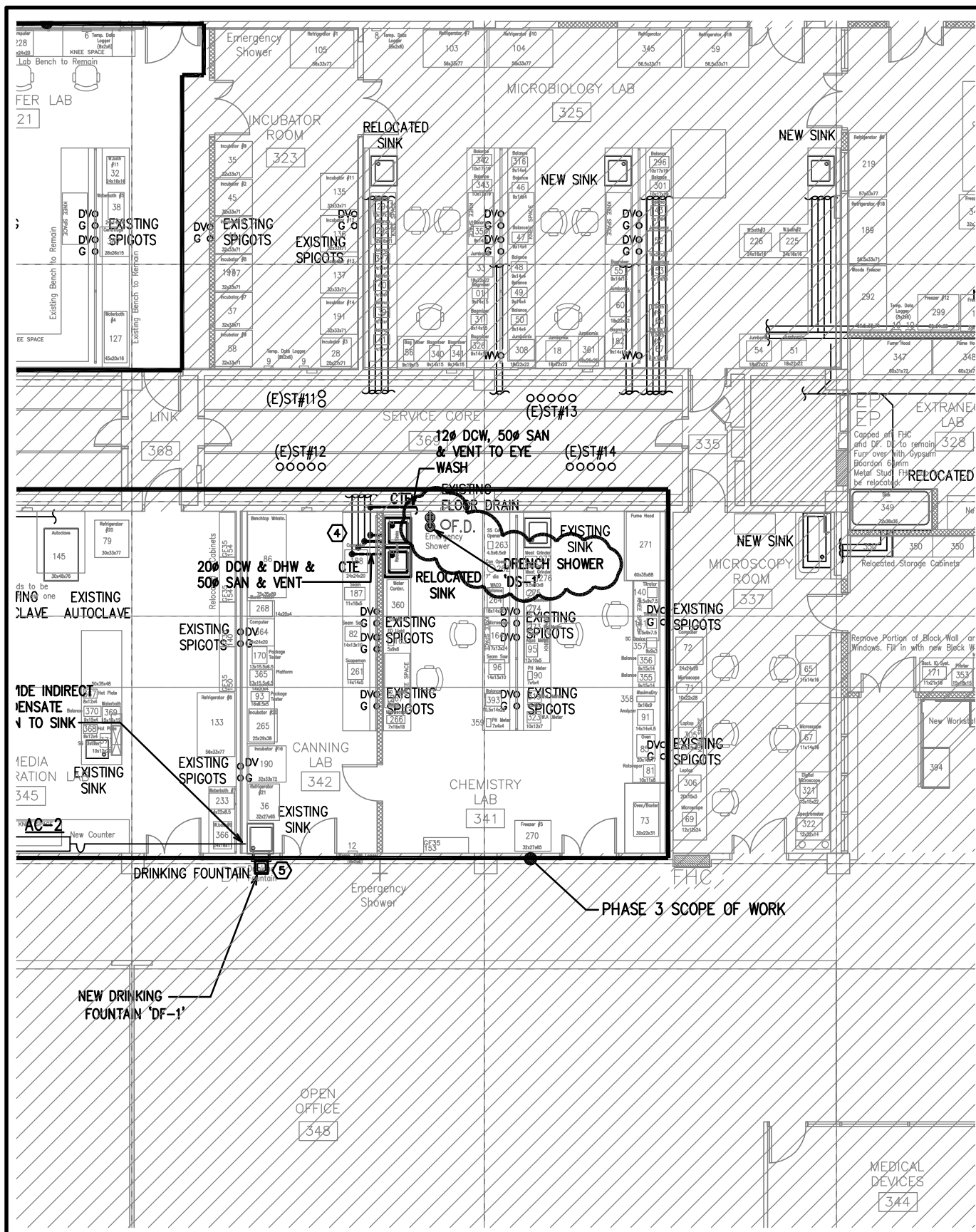
.2 Revise Extraneous Lab floor drain location as shown on the attached drawings.

.2 Drawing M-5.01, Schematic & Details.

.1 Revise Canopy Installation / Connection Detail as shown on the attached drawing.

End of Addendum No. 4





**MCW Consultants Ltd.**

Ste 600, 156 Front Street West, Toronto, Ont. M5J 2L6

PROJECT:

**CFIA GTA LABORATORY  
EXPANSION AND FIT-UP**

ARCHITECT:

**RPL ARCHITECTS INC.**

DATE:

**FEB 3, 2015**

DRAWN BY:

**D.R.**

REF. DWG. NO.

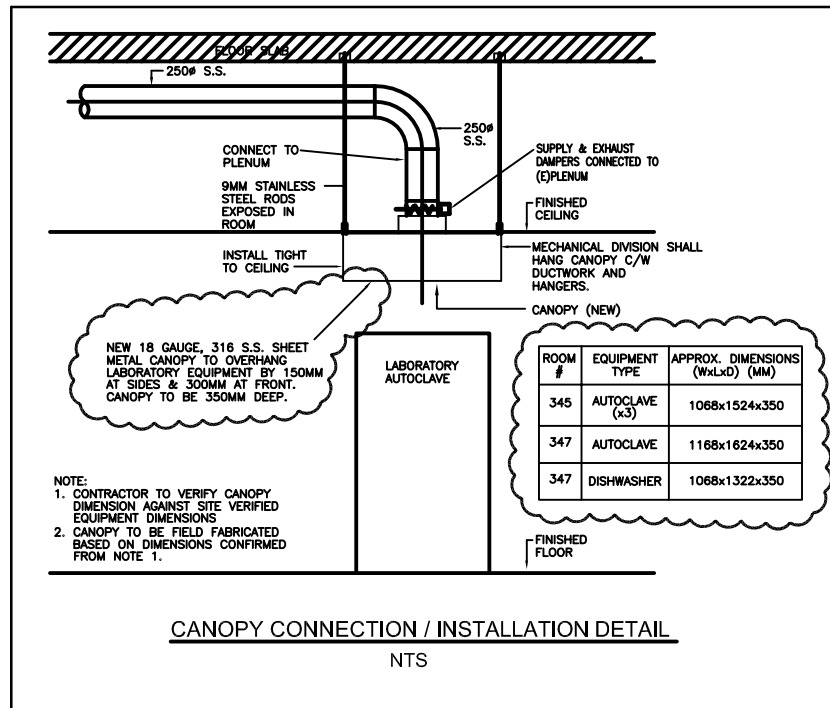
**M-3.03**

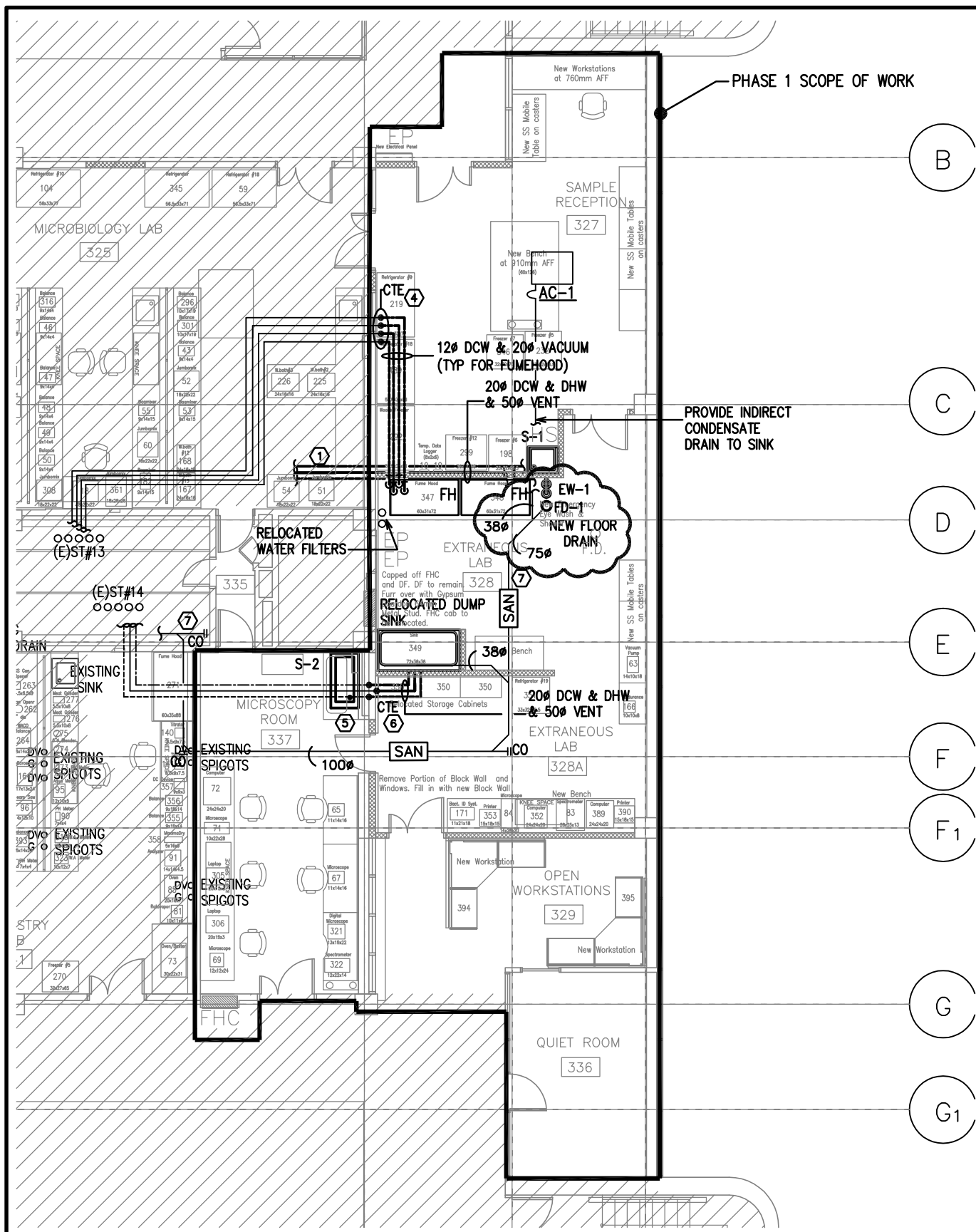
DWG. NO.

**SKM-2**

ISSUED WITH

**ADD #004**





**MCW Consultants Ltd.**

Ste 600, 156 Front Street West, Toronto, Ont. M5J 2L6

**PROJECT:**

**CFIA GTA LABORATORY  
EXPANSION AND FIT-UP**

**ARCHITECT:**

**RPL ARCHITECTS INC.**

**DATE:**

**FEB 4, 2015**

**DRAWN BY:**

**D.R.**

**REF. DWG. NO.**

**M-3.01**

**DWG. NO.**

**SKM-4**

**ISSUED WITH**

**ADD #004**