

NOTIFICATION OF REVISION

Public Works and Government
Services Canada

Addendum No. 5

Solicitation Name: CFIA GTA Laboratory Expansion and Fit-up
Solicitation Number: R.061999.001

Date: Tuesday, February 03, 2015

1. MECHANICAL

1.1 N/A

2. ELECTRICAL

2.1 SPECIFICATIONS

N/A

2.2 DRAWINGS

- .1 Drawing E-3.01, Level 3 Floor Plan – Proposed Power Layout
 - .1 Refer to attached sketch SKE-1.
Provide additional surface mounted duplex receptacle on north wall in Microbiology 325.
 - .2 Provide power connection for electronic sensors at faucets in Microbiology 325 as indicated on attached sketch SKE-1.
 - .3 Refer to attached sketch SKE-2.
Provide requirements for connections to systems furniture power/data pole. Coordinate requirements with furniture supplier.

End of Addendum No. 5



MCW Consultants Ltd.

1185 West Georgia St, Suite 1400, Vancouver, BC, V6E 4E6

PROJECT:

CFIA GTA LABORATORY EXPANSION AND FIT-UP

ARCHITECT:

RPL ARCHITECT INC.

DATE: FEB 03, 2015

DRAWN BY: K.S.

REF. DWG. NO.

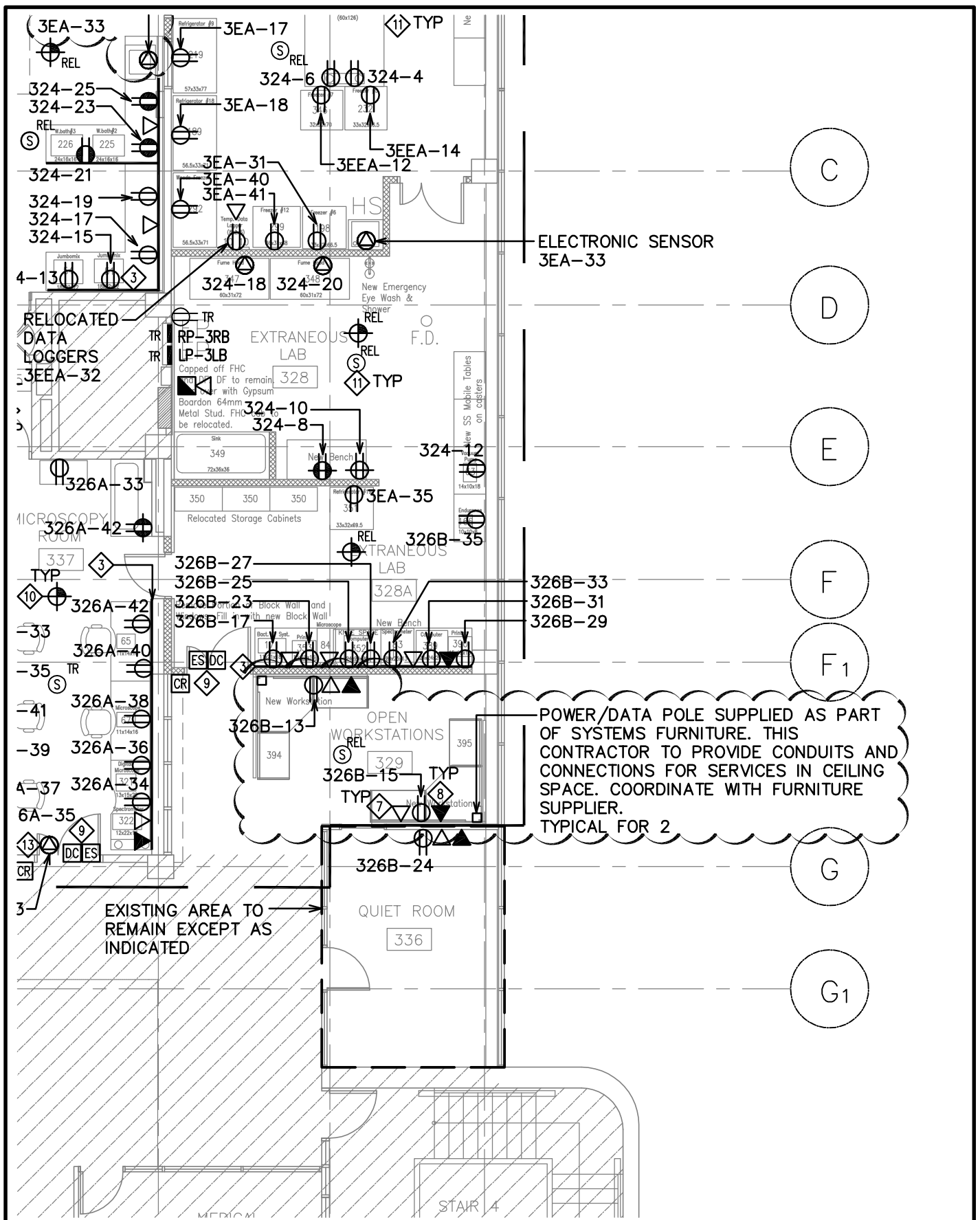
E-3.01

DWG. NO.

SKE-1

ISSUED WITH

ADD 005



MCW Consultants Ltd.

1185 West Georgia St, Suite 1400, Vancouver, BC, V6E 4E6

PROJECT:

**CFIA GTA LABORATORY
EXPANSION AND FIT-UP**

ARCHITECT:

RPL ARCHITECT INC.

DATE: FEB 03, 2015

DRAWN BY: K.S.

REF. DWG. NO.

E-3.01

DWG. NO.

SKE-2

ISSUED WITH

ADD 005