

NOTIFICATION OF REVISION

Public Works and Government
Services Canada

Addendum No. 3

Solicitation Name: CFIA GTA Laboratory Expansion and Fit-up
Solicitation Number: R.061999.001

Date: Monday, February 02, 2015

1. MECHANICAL

1.1 N/A

2. ELECTRICAL

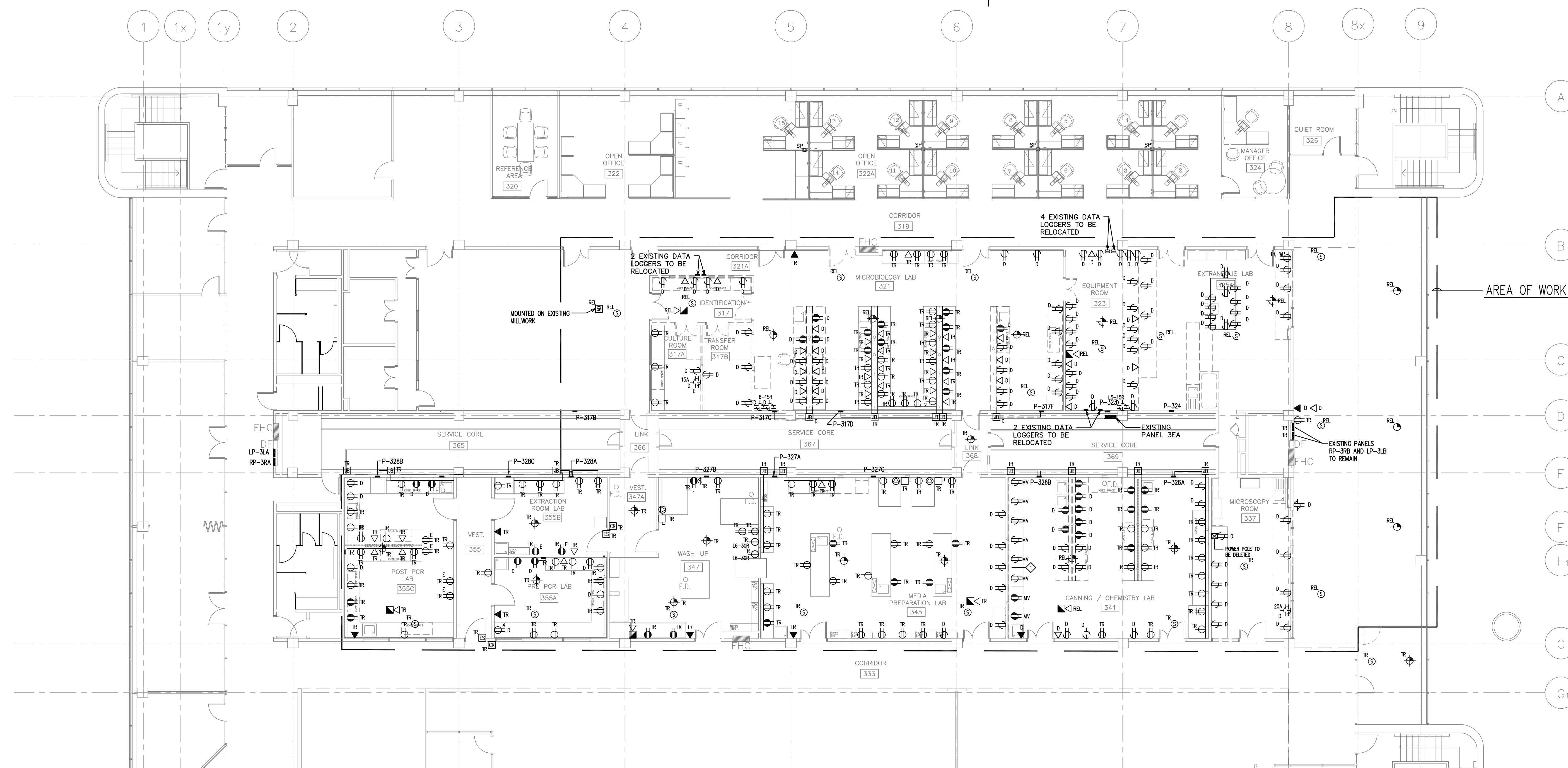
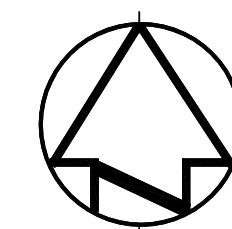
2.1 SPECIFICATIONS

N/A

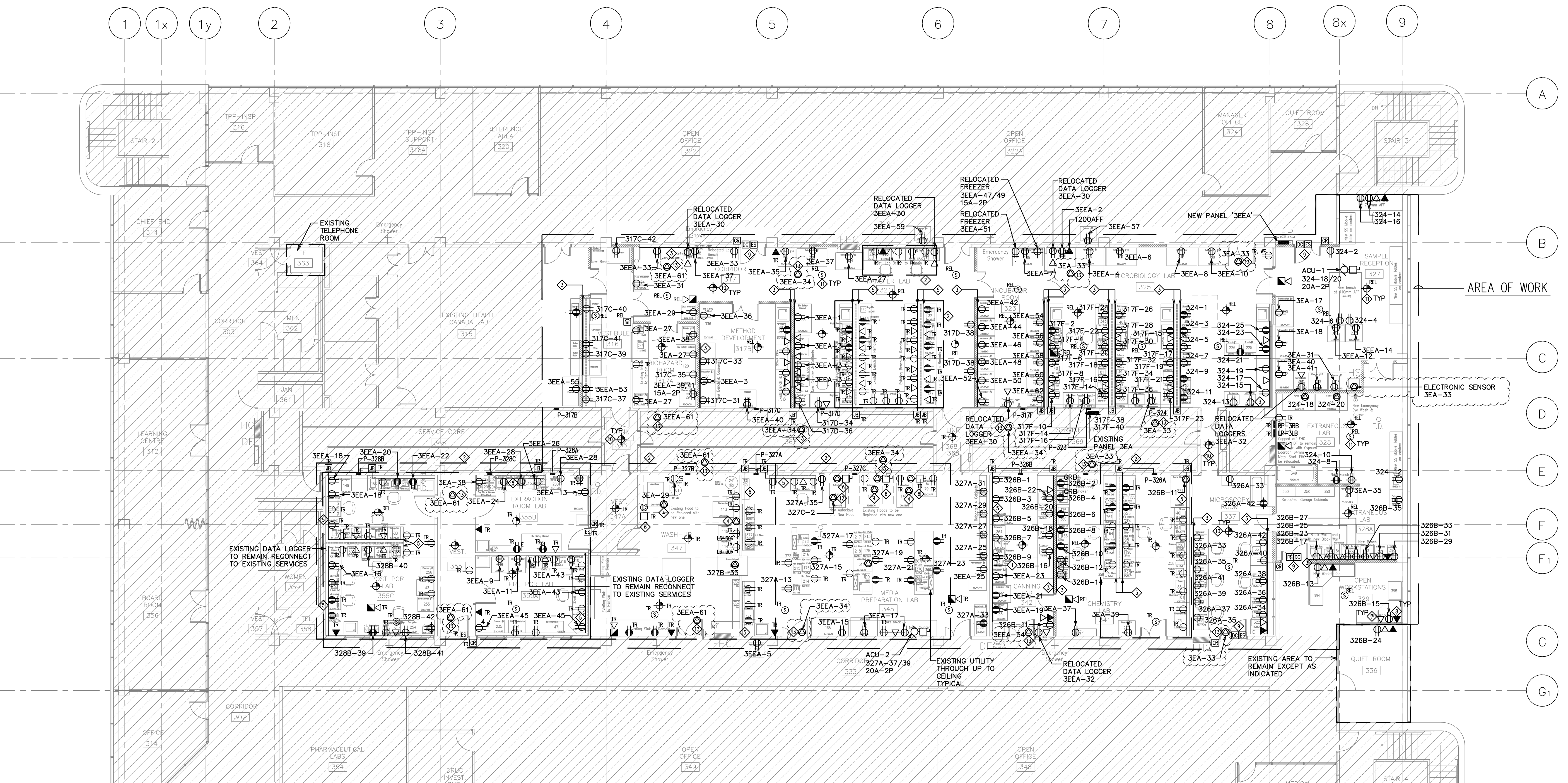
2.2 DRAWINGS

- .1 Drawing E-3.01, Level 3 Floor Plan – Proposed Power Layout
 - .1 Provide power connections to mechanical controls transformers. Locations for connections indicated on attached drawing are approximate, coordinate requirements with mechanical controls contractor.
 - .2 Provide power connection for electronic sensor at faucet in Sample Reception 327 as indicated on attached drawing.
- .2 Drawing E-4.01, Existing Floor Plans, Riser Diagrams and Schedules
 - .1 Refer to Typical Sealed Lab Receptacle Detail. Delete the requirement for a waterproof spring loaded cover. Provide silicone seal at conduit entry and around backbox. This requirement applies to all new outlets and receptacles wall mounted and not in surface raceway.
 - .2 Refer to New UPS Power Supply to Autoclaves. Revise 2-200A-3P breakers to 2-200A 3P fused switches to match existing. The existing Switchboard manufacture is FPE (Federal Pioneer) 3000A 600V 3PH 60Hz.
 - .3 Refer to Existing Fire Alarm System Riser Diagram. The existing System is Siemens equipment, maintained by Alarmstat. Contact number: 905 886 0882

End of Addendum No. 3



1 PART LEVEL 3 - DEMOLITION - POWER AND SYSTEMS LAYOUT
1:100



2 PART LEVEL 3 - NEW - POWER AND SYSTEMS LAYOUT
1:100

GENERAL NOTES

1. -

DRAWING NOTES

- ◇ REMOVE EXISTING WIRING AND STORE IN SAFE AREA, WHEN NEW WALL IS IN PLACE RE-INSTALL WIRING AND CONNECT TO SUPPLY JUNCTION BOX
- ◇ EXISTING WIRING IN RELOCATED POSITION, CONNECT TO EXISTING SUPPLY JUNCTION BOX

GENERAL NOTES

1. ALL RECEPTABLES CONNECTED TO EMERGENCY CIRCUITS ('SEA' & 'SEA') SHALL BE NEW AND RED IN COLOR.
2. PROVIDE LAMINAR LABEL FOR CIRCUIT ON ALL RECEPTABLES AS INDICATED.
3. FOR ALL EXISTING DEVICES BEING REMOVED, DISCONNECT FEEDERS AND/OR SERVICES AT SOURCE, REMOVE ALL REDUNDANT CONDUITS, CABLES, WIRING, ETC. AND MAKE SAFE.

DRAWING NOTES

- ◇ EXISTING WIRING IN RELOCATED POSITION, CONNECT TO EXISTING SUPPLY JUNCTION BOX, RECONNECT ALL RECEPTABLES TO EXISTING CIRCUITS.
- ◇ DEVICES WITH 'TR' - DENOTES EXISTING DEVICES TO REMAIN, IF ANY DEVICES THAT ARE TO REMAIN ARE BEING DISCONNECTED DUE TO CONSTRUCTION, THE CONTRACTOR SHALL RECONNECT DEVICES TO EXISTING CIRCUITS AND/OR SERVICES.
- ◇ NEW SURFACE WIRING ON NEW WALL OR CEILINGWORK C/W DEVICES AS INDICATED, CONNECT NEW DEVICES TO EXISTING CIRCUITS WHERE APPLICABLE OR CONNECT AS INDICATED, NEW WIRING TO BE INSTALLED (EACH) SPACES OR TO MATCH EXISTING, EXACT LOCATIONS AND INSTALLATION REQUIREMENTS TO BE COORDINATED WITH CASE WORK.
- ◇ EXISTING HOOD TO BE REPLACED WITH NEW, DISCONNECT EXISTING AND CONNECT NEW HOOD TO EXISTING CIRCUIT.
- ◇ EXISTING SURFACE MOUNTED WIRING TO REMAIN.
- ◇ PROVIDE NEW UPS POWER CONNECTION FOR 3 EXISTING AUTOCLAVES AND 1 NEW AUTOCLAVE, REFER TO DIAGRAM ON DRAWING E-4.01.
- ◇ FOR ALL NEW DATA OUTLETS RUN CONDUITS TO TERMINATE IN EXISTING IT OFFICE ON LEVEL 2, ALSO REFER TO DETAIL ON DRAWING E-4.01.
- ◇ FOR ALL NEW TELEPHONE OUTLETS RUN CONDUITS TO TERMINATE IN EXISTING TELEPHONE ROOM ON LEVEL 3, ALSO REFER TO DETAIL ON DRAWING E-4.01.
- ◇ FOR ALL NEW SECURITY SYSTEM DEVICES RUN CONDUITS TO TERMINATE IN EXISTING CENTRAL SERVICE CORE ON LEVEL 3 OR AS DIRECTED ON SITE.
- ◇ FOR ALL NEW FIRE ALARM SYSTEM DEVICES PROVIDE CONDUIT AND WIRING AND CONNECT TO APPLICABLE EXISTING ZONE.
- ◇ FOR ALL RELOCATED DEVICES EXTEND EXISTING CONDUIT AND WIRING AS REQUIRED AND RECONNECT TO EXISTING CIRCUITS AND/OR SERVICES.
- ◇ PROVIDE CONNECTION TO NEW HOOD AT NEW AUTOCLAVE, CONNECT TO 15A-1P BREAKER IN PANEL P-320, RUN 3/4" EMT-35mm TO HOOD AND CONNECT.
- ◇ CONNECTION FOR MECHANICAL CONTROLS TRANSFORMER FOR MOTORISED DAMPERS, REPEAT COILS AND GAS CONTROLLERS/SENSORS, LOCATIONS INDICATED ARE APPROXIMATE, COORDINATE WITH MECHANICAL CONTRACTOR.



04		
03	ISSUED FOR ADDENDUM 03	2015-02-02
02	ISSUED FOR ADDENDUM ADD 001	2015-01-14
01	ISSUED FOR TENDER	2014-12-19
revision		date

Do not scale drawings.
Verify all dimensions and conditions on site and immediately notify the Departmental Representative of all discrepancies.

A	Detail No.
B	No. du détail
C	drawing no. - where detail required
D	drawing no. - où détail requis
E	drawing no. - where detailed
F	drawing no. - où détaillé

project title
titre du projet
SCARBOROUGH Ontario
HEALTH CANADA BUILDING
2301 MIDLAND AVENUE
CHIA GTA LABORATORY
EXPANSION AND FIT-UP

drawing title
titre du dessin
LEVEL 3 FLOOR PLAN -
PROPOSED POWER LAYOUT

drawn by
dessiné par
R.A.

designed by
conçu par
K.S.

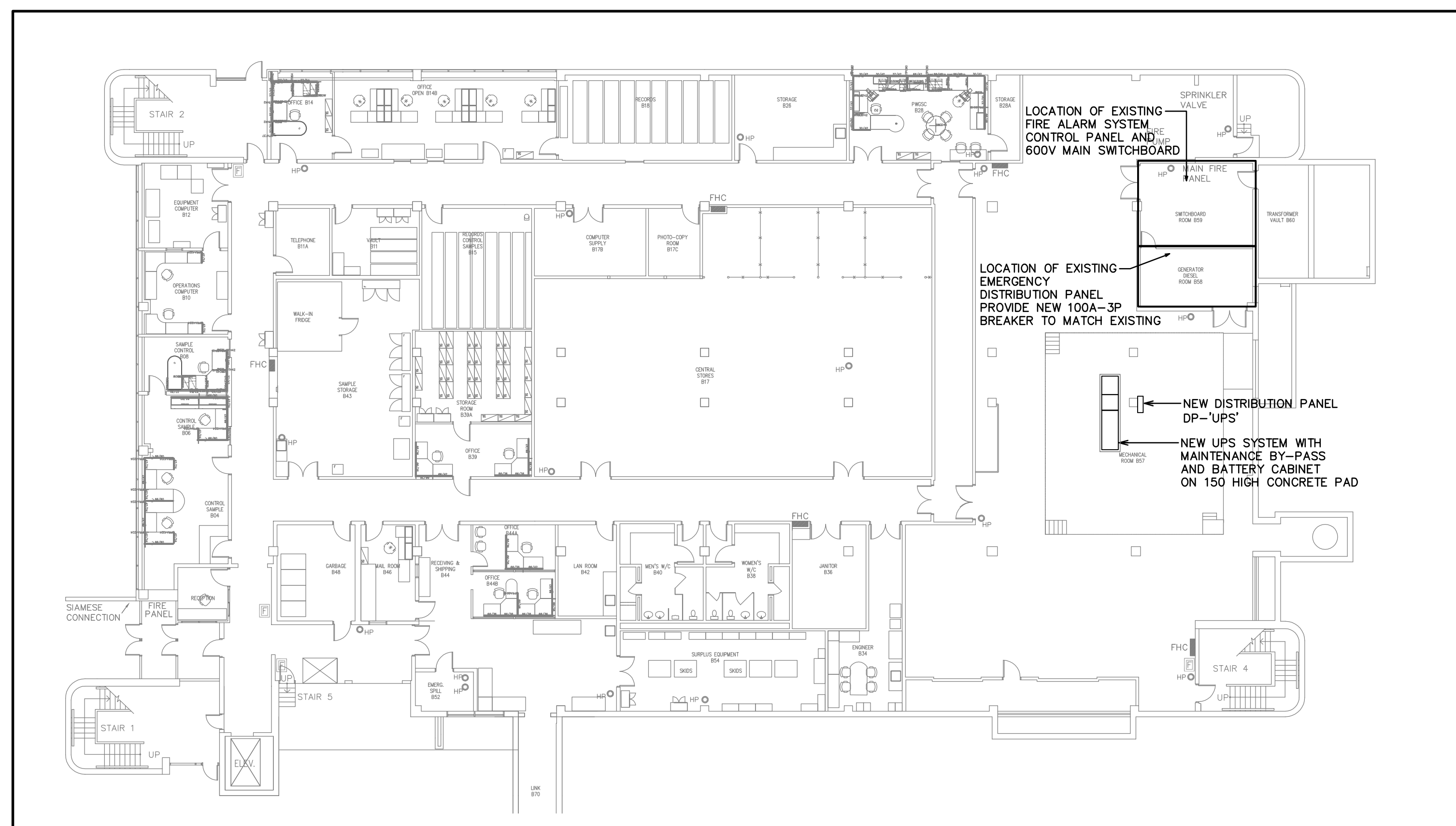
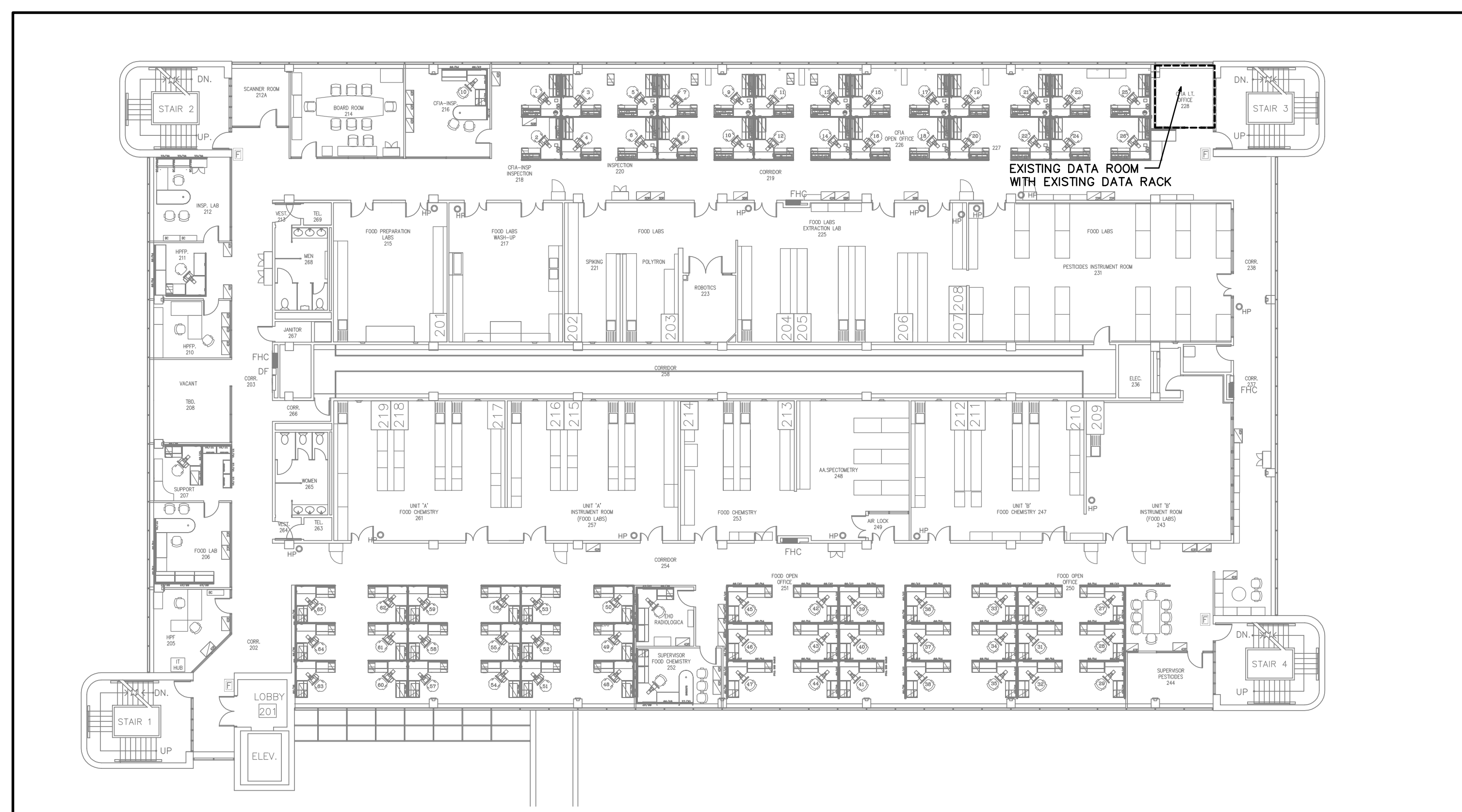
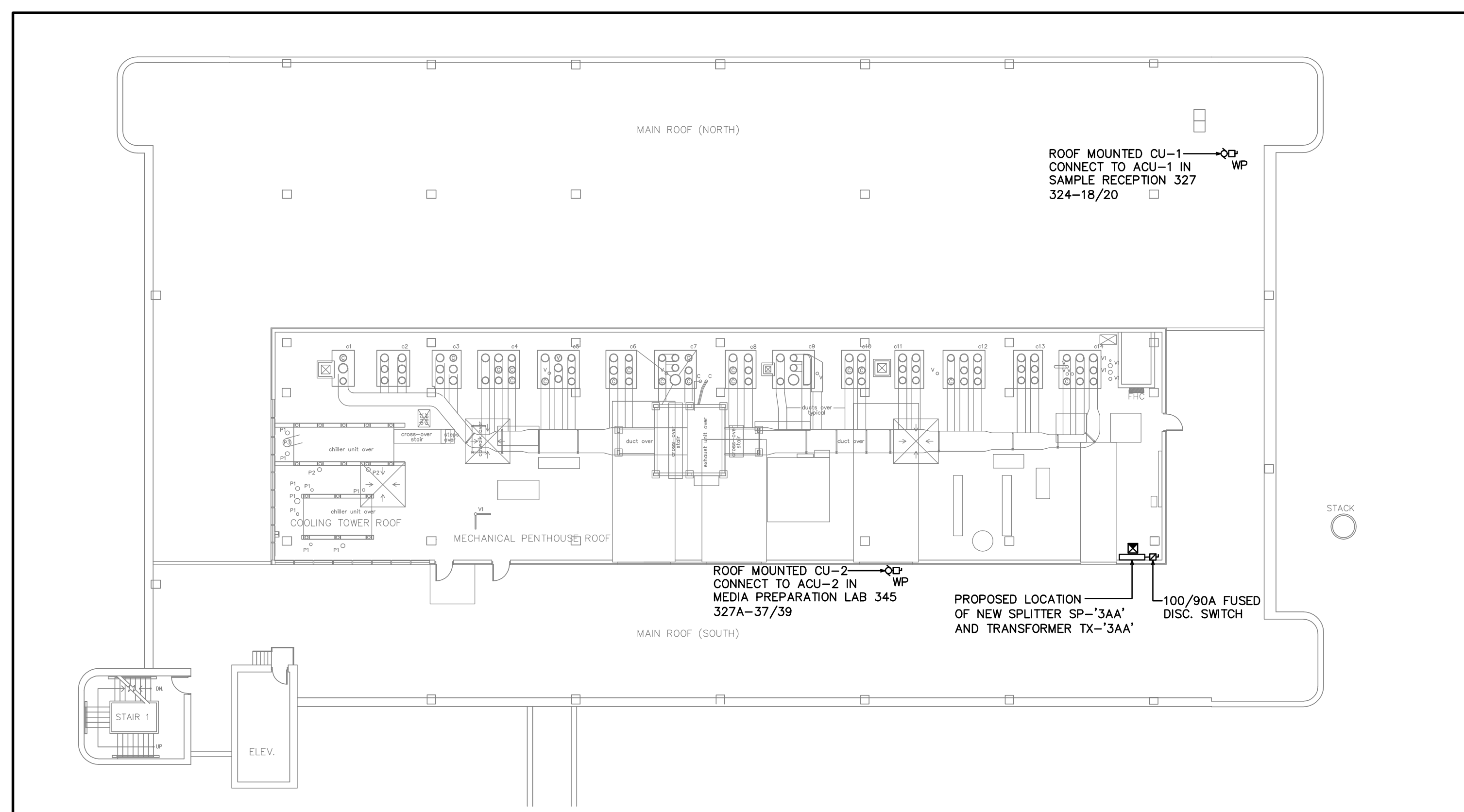
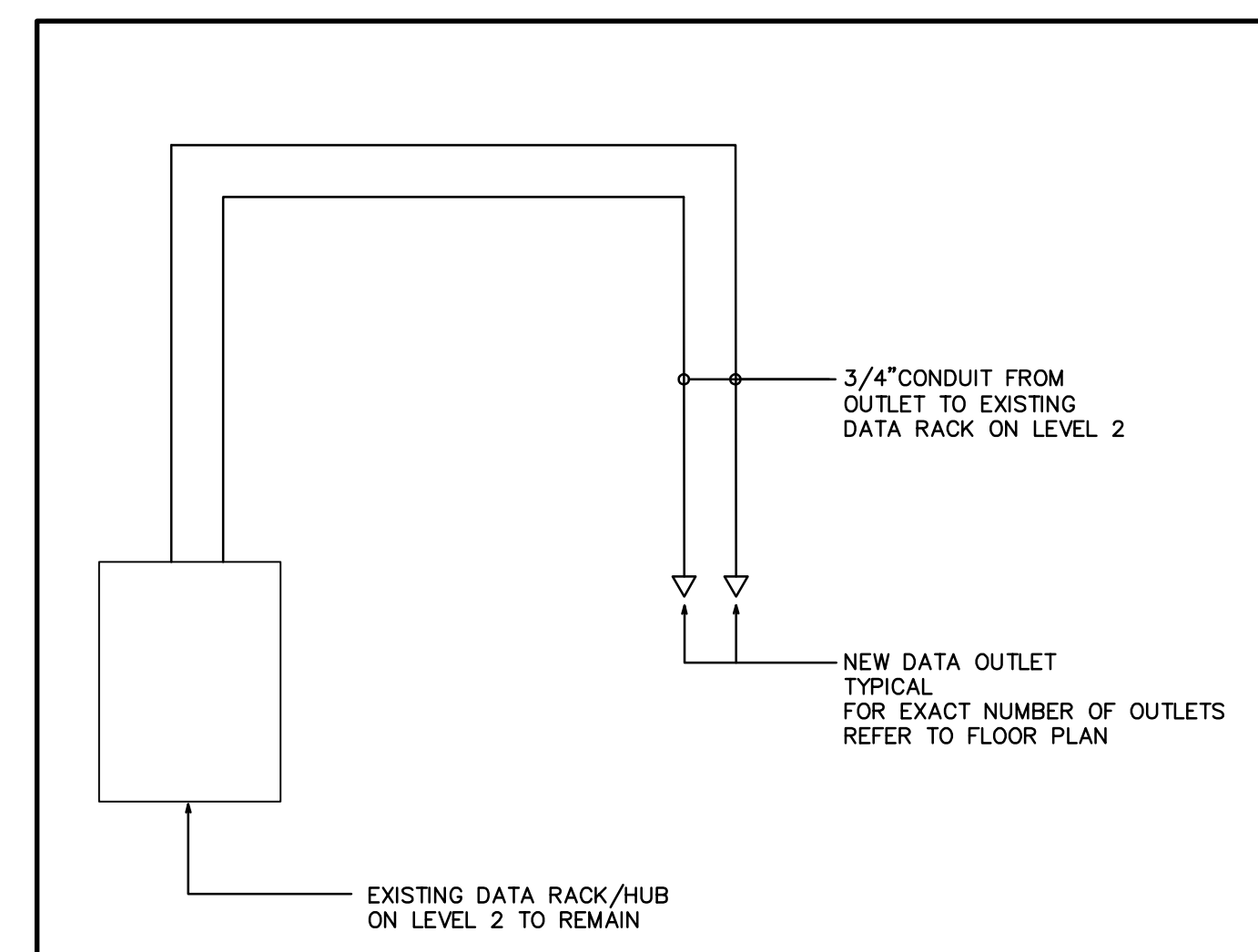
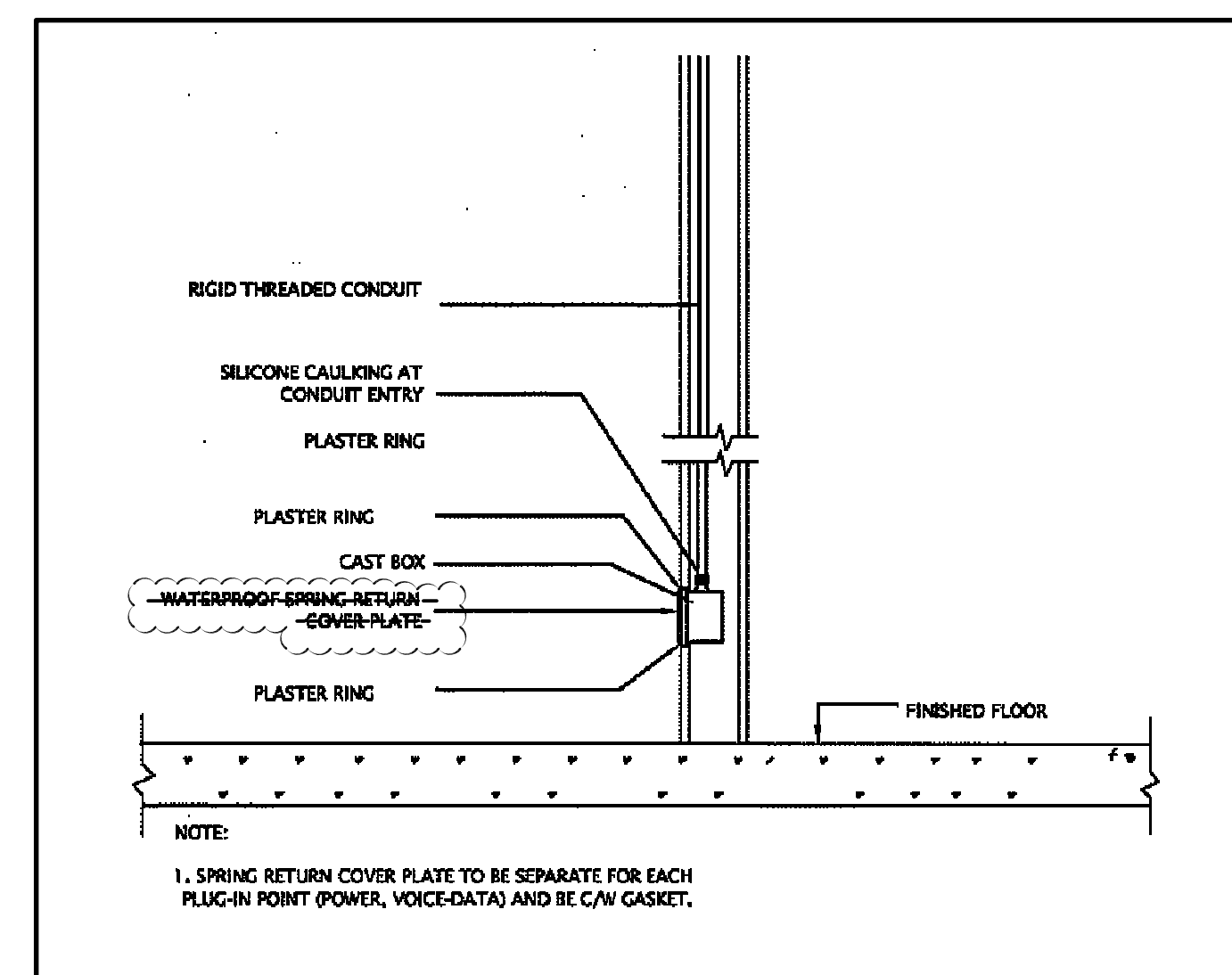
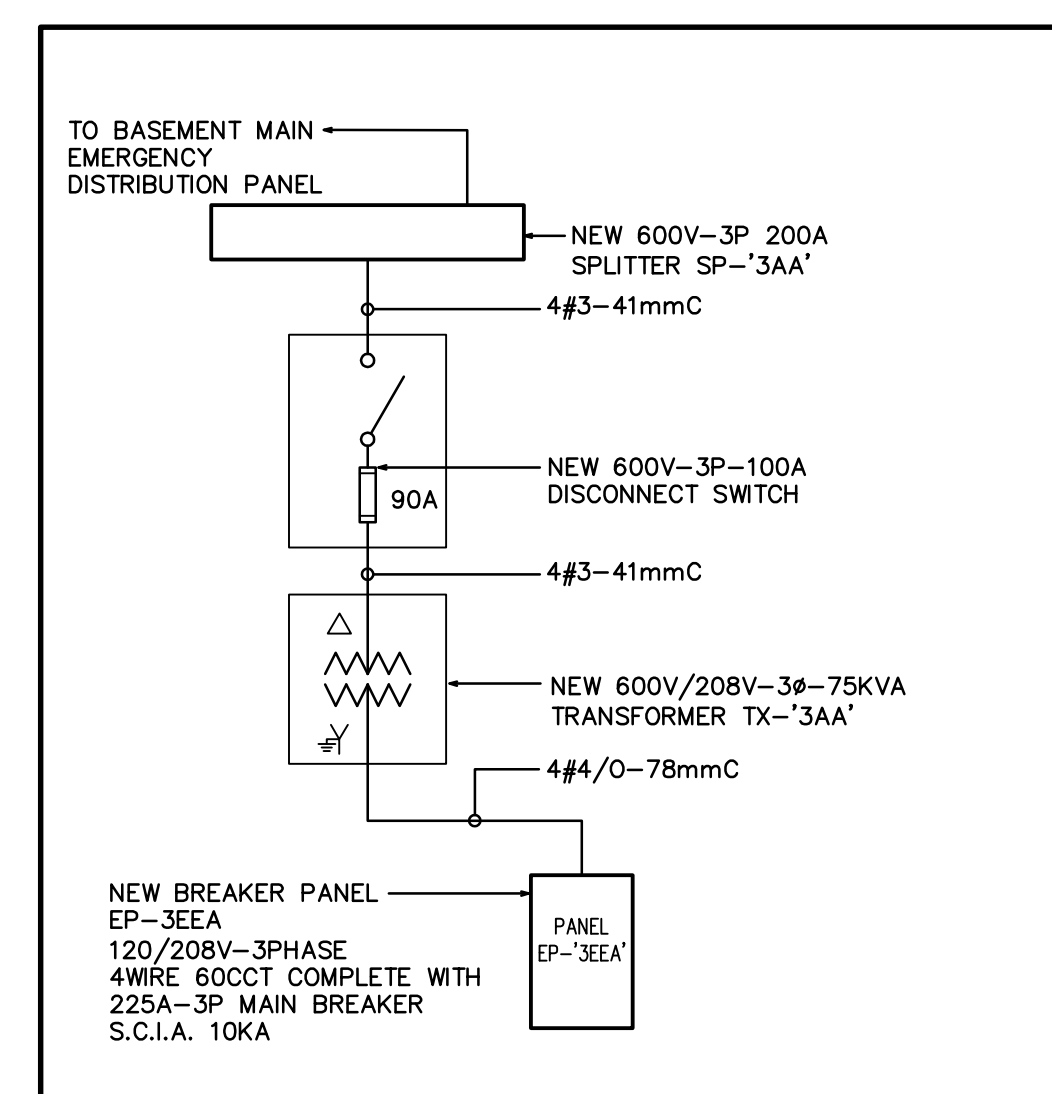
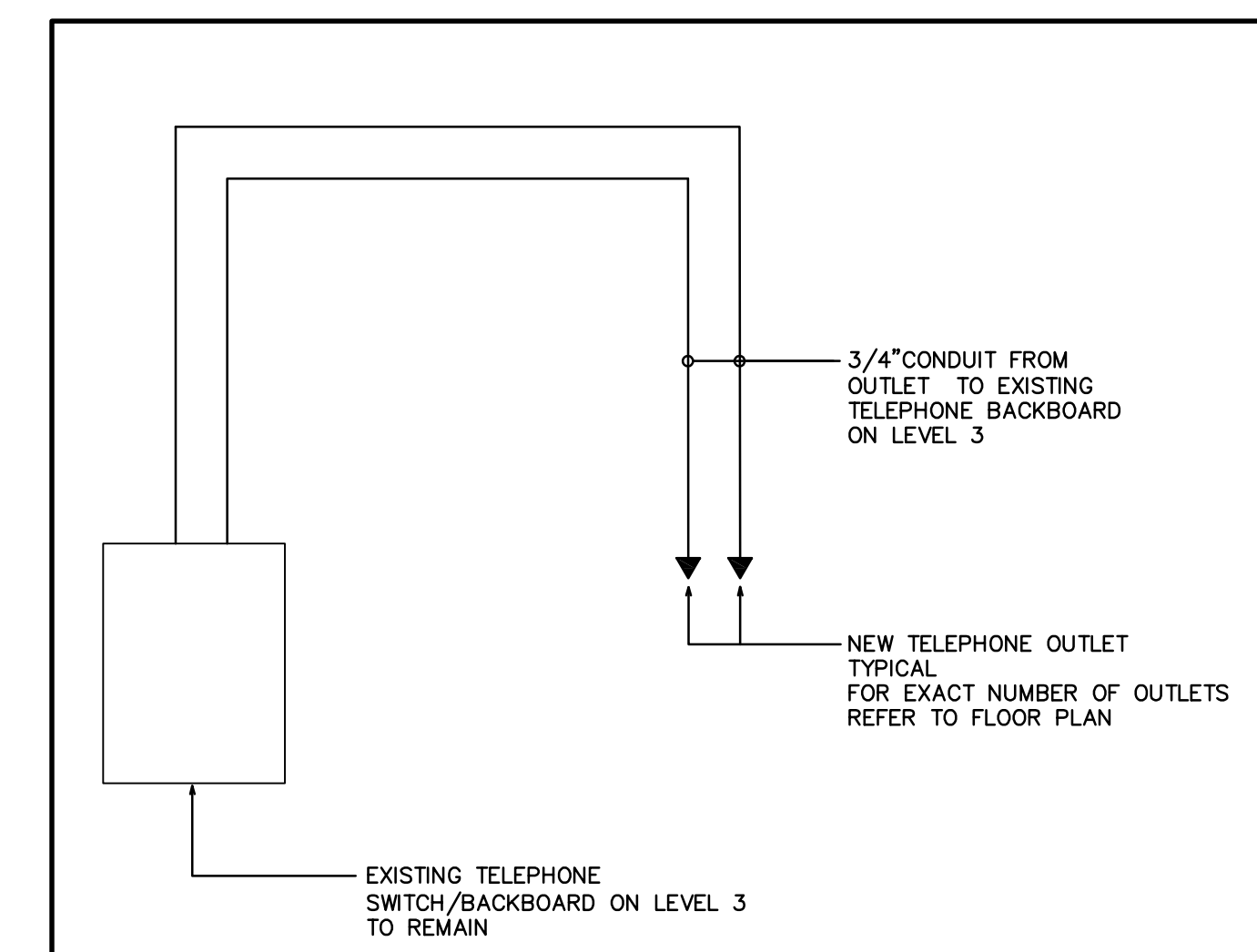
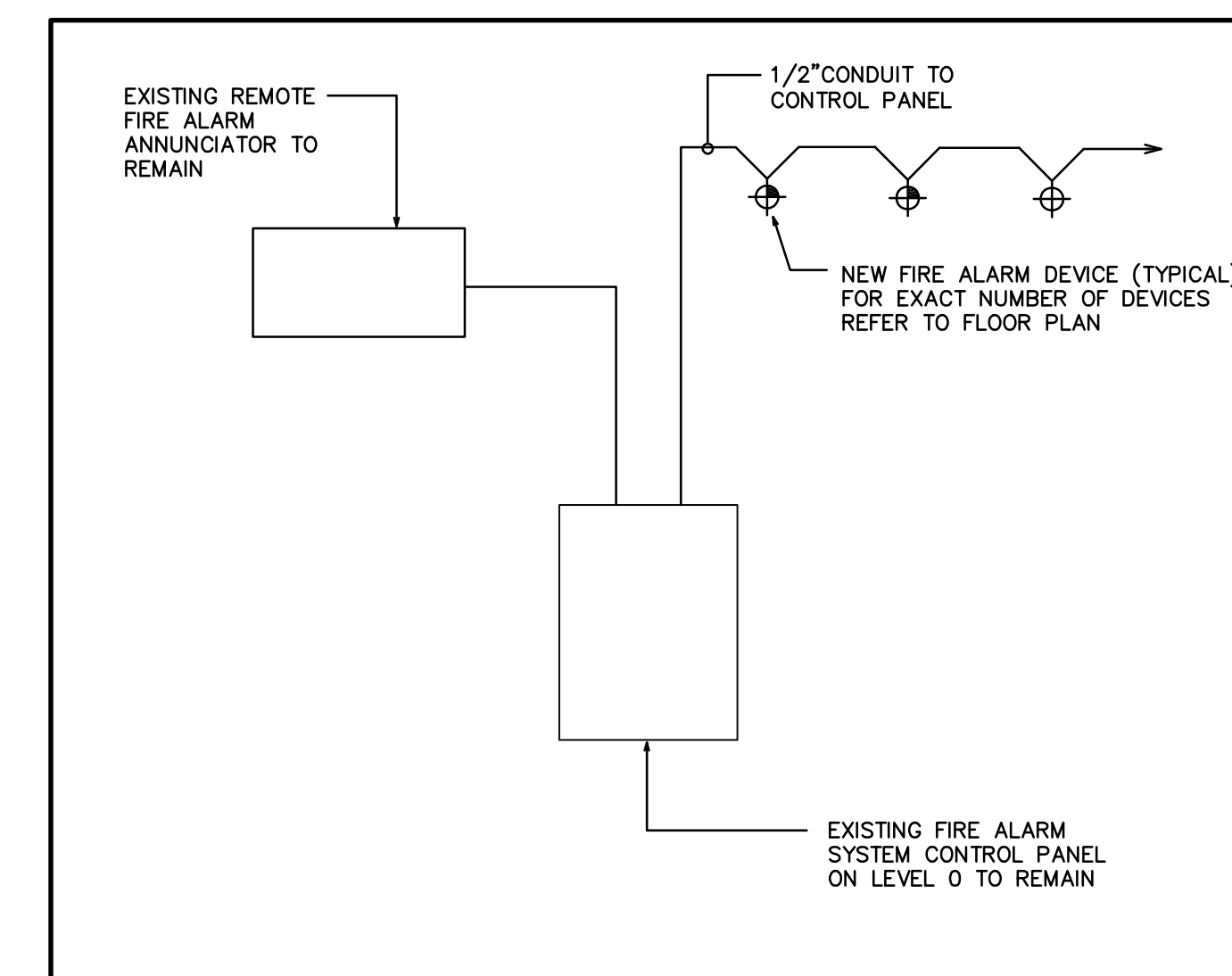
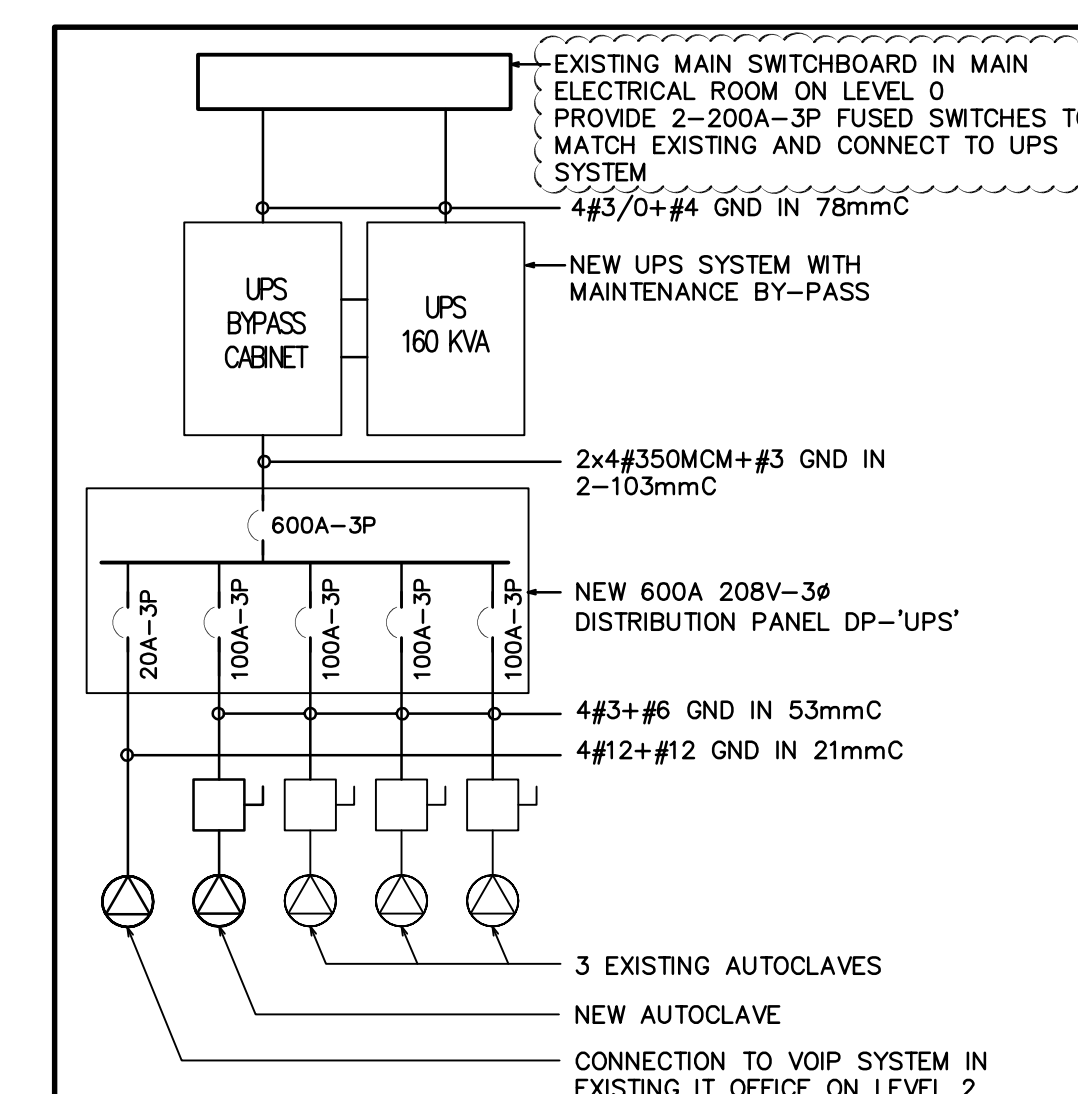
approved by
approuvé par
J.S.

bill
office
project manager
administrateur de projet

project date
date du projet
2014-12-19

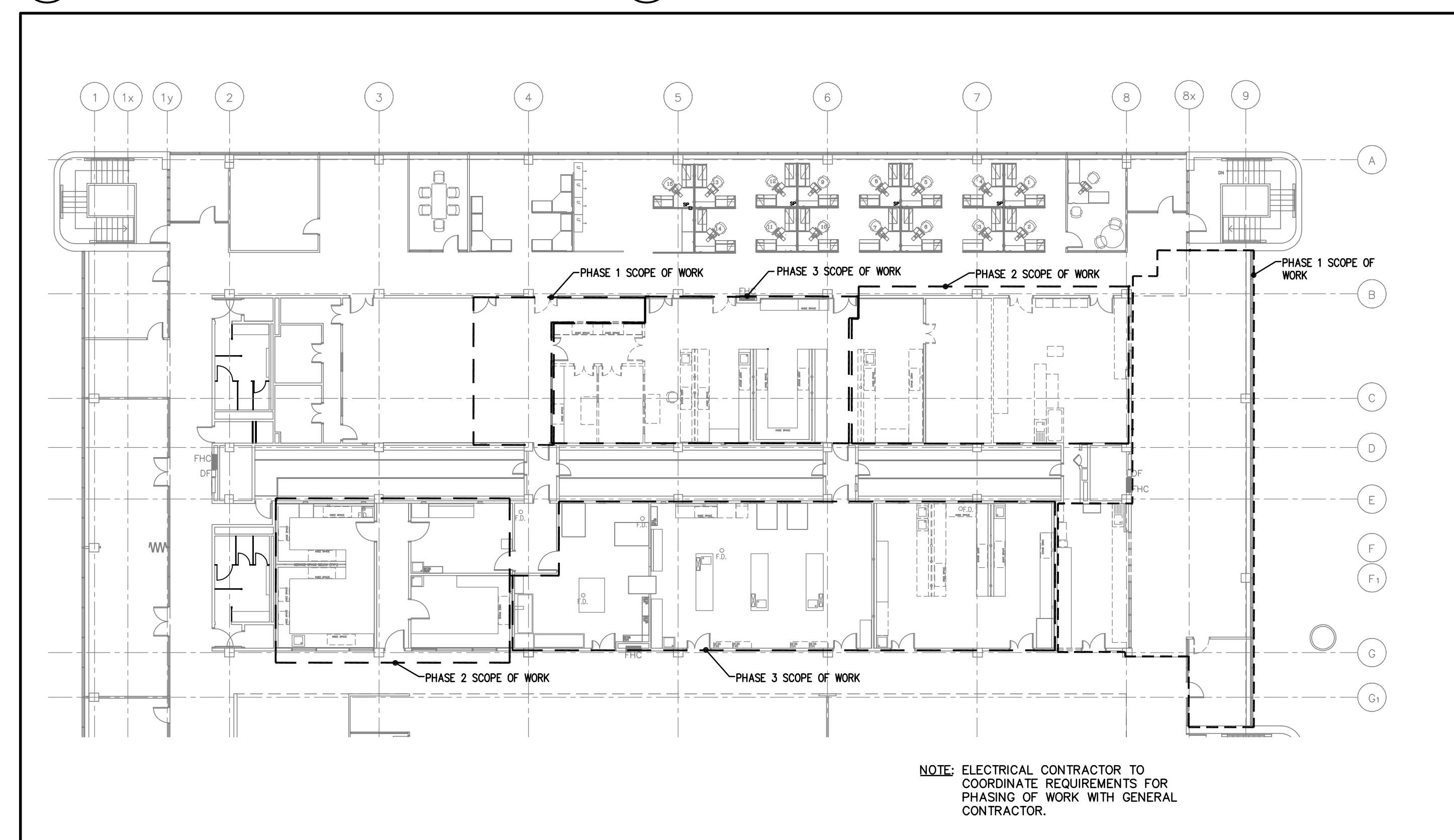
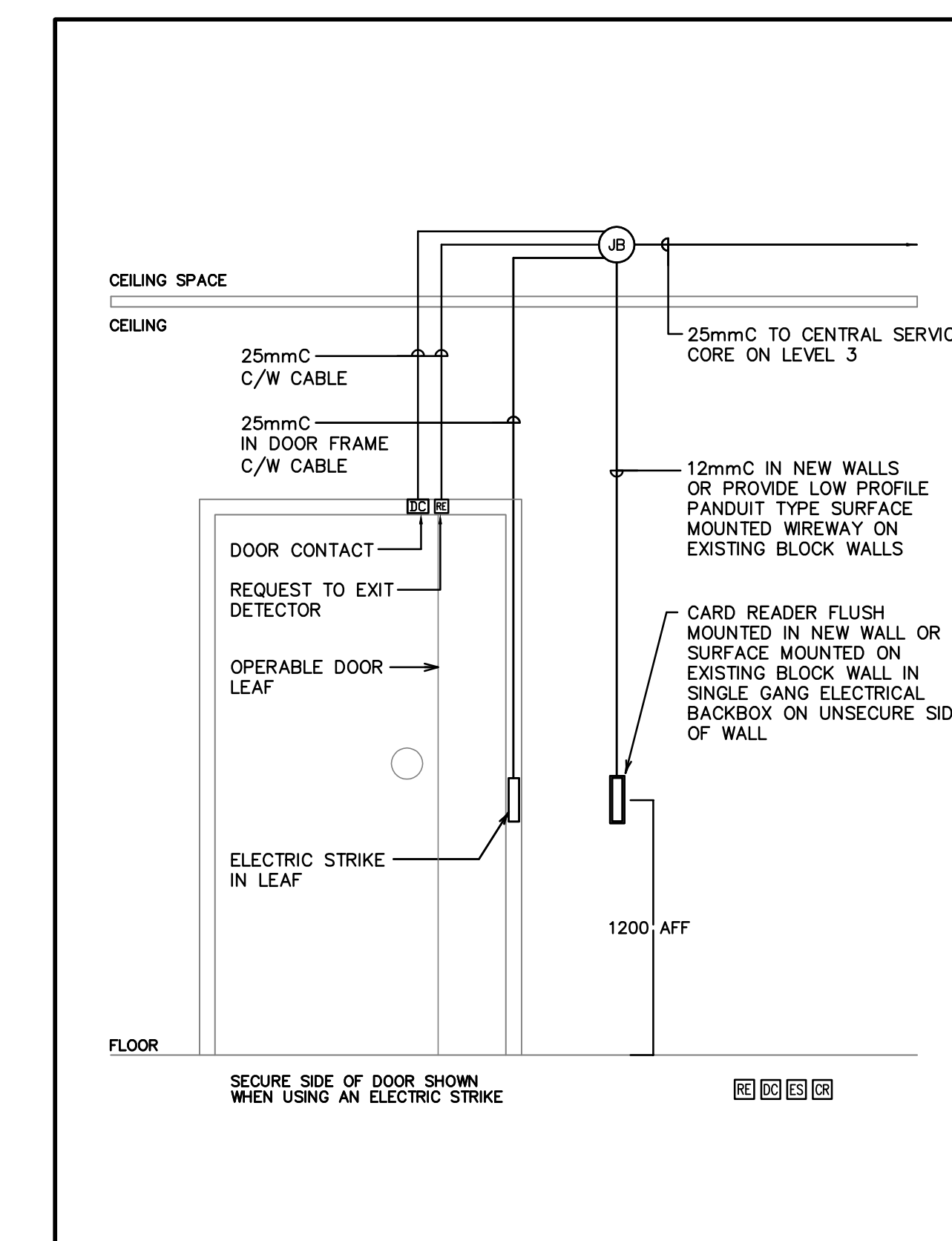
project no.
no. du projet
R.061999.001

drawing no.
dessiné no.
E-3.01

EXISTING LEVEL 0
1:200EXISTING LEVEL 2
1:200EXISTING MECHANICAL PENTHOUSE
1:2005 DATA RISER DIAGRAM
E-4.0/ N.T.S.3 TYPICAL SEALED LAB RECEPTACLE DETAIL
E-4.0/ N.T.S.1 NEW EMERGENCY POWER SUPPLY TO NEW PANEL 3EEA
E-4.0/ N.T.S.4 TELEPHONE RISER DIAGRAM
E-4.0/ N.T.S.2 FIRE ALARM SYSTEM RISER DIAGRAM
E-4.0/ N.T.S.4 NEW UPS POWER SUPPLY TO AUTOCLAVES
E-4.0/ N.T.S.

PANEL EP-3EEA									
TOTAL LOAD: -KVA		TYPE: 120/208V 3P 4W		MOUNTING SURFACE		LOCATION: -			
TOTAL CIRCUITS: 60		MAINS: 225A		CIRCUIT		CIRCUIT			
LOAD KVA	DESCRIPTION	SERV REF	BRKR	CIR	BRKR	SERV REF	DESCRIPTION	LOAD KVA	
100	GFI REC. RM 321	1	15	1	15	1	REC. RM 325	200	
100	GFI REC. RM 321	1	15	2	15	2	REC. RM 325	200	
100	REC. RM 333	1	15	3	15	3	REC. RM 325	200	
100	REC. RM 323	1	15	4	15	4	REC. RM 325	200	
200	REC. RM 355A	1	20	5	15	5	REC. RM 325	200	
100	REC. RM 355A	1	20	6	15	6	REC. RM 325	200	
100	REC. RM 355B	1	15	7	15	7	REC. RM 327	200	
REC. RM 345	1	15	8	15	8	8	REC. RM 355C	200	
REC. RM 345	1	15	9	15	9	9	REC. RM 355C	200	
REC. RM 342	1	15	10	15	10	10	REC. RM 355C	100	
REC. RM 342	1	15	11	15	11	11	REC. RM 355C	100	
REC. RM 345	1	15	12	15	12	12	REC. RM 355B	100	
REC. RM 321	1	15	13	15	13	13	REC. RM 355B	100	
REC. RM 317	1	15	14	15	14	14	DATA LOGGERS	200	
REC. RM 317	1	15	15	15	15	15	MECH. CONTROLS	200	
REC. RM 317	1	15	16	15	16	16	REC. RM 317B	200	
REC. RM 317	1	15	17	15	17	17	REC. RM 317A	200	
REC. RM 317A	1	15	18	15	18	18	REC. RM 317B	200	
FREEZER	1	15	19	15	19	19	REC. RM 323	200	
REC. RM 355A	2	15	20	15	20	20	REC. RM 323	200	
REC. RM 355A	2	15	21	15	21	21	REC. RM 323	200	
REC. RM 323	1	15	22	15	22	22	REC. RM 323	200	
FREEZER	1	15	23	15	23	23	REC. RM 323	200	
FREEZER RM 323	1	20	24	15	24	24	REC. RM 323	200	
REC. RM 316	1	15	25	15	25	25	REC. RM 323	200	
REC. RM 315	1	15	26	15	26	26	REC. RM 323	200	
REC. RM 319	1	15	27	15	27	27	REC. RM 323	200	
REC. RM 319	1	15	28	15	28	28	REC. RM 323	200	
SPARE	1	15	29	15	29	29	REC. RM 323	200	
SPARE	1	15	30	15	30	30	REC. RM 323	200	
SPARE	1	15	31	15	31	31	REC. RM 323	200	
SPARE	1	15	32	15	32	32	REC. RM 323	200	
SPARE	1	15	33	15	33	33	REC. RM 323	200	
SPARE	1	15	34	15	34	34	REC. RM 323	200	
SPARE	1	15	35	15	35	35	REC. RM 323	200	
SPARE	1	15	36	15	36	36	REC. RM 323	200	
SPARE	1	15	37	15	37	37	REC. RM 323	200	
SPARE	1	15	38	15	38	38	REC. RM 323	200	
SPARE	1	15	39	15	39	39	REC. RM 323	200	
SPARE	1	15	40	15	40	40	REC. RM 323	200	
SPARE	1	15	41	15	41	41	REC. RM 323	200	
SPARE	1	15	42	15	42	42	REC. RM 323	200	
SPARE	1	15	43	15	43	43	REC. RM 323	200	
SPARE	1	15	44	15	44	44	REC. RM 323	200	
SPARE	1	15	45	15	45	45	REC. RM 323	200	
SPARE	1	15	46	15	46	46	REC. RM 323	200	
SPARE	1	15	47	15	47	47	REC. RM 323	200	
SPARE	1	15	48	15	48	48	REC. RM 323	200	
SPARE	1	15	49	15	49	49	REC. RM 323	200	
SPARE	1	15	50	15	50	50	REC. RM 323	200	
SPARE	1	15	51	15	51	51	REC. RM 323	200	
SPARE	1	15	52	15	52	52	REC. RM 323	200	
SPARE	1	15	53	15	53	53	REC. RM 323	200	
SPARE	1	15	54	15	54	54	REC. RM 323	200	
SPARE	1	15	55	15	55	55	REC. RM 323	200	
SPARE	1	15	56	15	56	56	REC. RM 323	200	
SPARE	1	15	57	15	57	57	REC. RM 323	200	
SPARE	1	15	58	15	58	58	REC. RM 323	200	
SPARE	1	15	59	15	59	59	REC. RM 323	200	
SPARE	1	15	60	15	60	60	REC. RM 323	200	
SPARE	1	15	61	15	61	61	REC. RM 323	200	
SPARE	1	15	62	15	62	62	REC. RM 323	200	
SPARE	1	15	63	15	63	63	REC. RM 323	200	
SPARE	1	15	64	15	64	64	REC. RM 323	200	
SPARE	1	15	65	15	65	65	REC. RM 323	200	
SPARE	1	15	66	15	66	66	REC. RM 323	200	
SPARE	1	15	67	15	67	67	REC. RM 323	200	
SPARE	1	15	68	15	68	68	REC. RM 323	200	
SPARE	1	15	69	15	69	69	REC. RM 323	200	
SPARE	1	15	70	15	70	70	REC. RM 323	200	
SPARE	1	15	71	15	71	71	REC. RM 323	200	
SPARE	1	15	72	15	72	72	REC. RM 323	200	

LIGHTING FIXTURE SCHEDULE									
SYMBOLS	BASE MANUFACTURER	MODEL NUMBER	Ceiling Type	WALL Type	Recessed Surface	Recessed Surface	Recessed Surface	Recessed Surface	REMARKS
F1	GFI	GA-14-2-F28-G-3-AP3-120V	•	•	•	•	•	•	1'x4' RECESSED FLUORESCENT FIXTURE, C/W 125\"
CERTOLUX	CRF-1X4-355B-A-2L-TB-28W-120								THICK LENS, SEALED AND GASKETED SURFACE FOR CLEAN ROOM APPLICATIONS.
F2	GFI	BA-14-2-F28-F-3-AP3-120V	•	•	•	•	•	•	SAME AS F1, EXCEPT MOUNTED IN DRYWALL
CERTOLUX	CRF-1X4-3463-A-2L-TB-28W-120								
F*		EXISTING FIXTURE TO REMAIN							
FR*		RELOCATED EXISTING FIXTURE							
E1	LUMACELL	LA SERIES PICTOGRAM EXIT SIGN							C/W MOUNTING HARDWARE AS PER MOUNTING INDICATED ON PLANS

NEW LEVEL 3 PHASING PLAN
1:2006 TYPICAL SINGLE DOOR WITH CARD READER AND ELECTRIC STRIKE
E-4.0/ N.T.S.

Public Works and Government Services Canada
Travaux publics et Services gouvernementaux Canada

04
03 ISSUED FOR ADDENDUM 03 2010-02-02
02 ISSUED FOR ADDENDUM ADD 001 2015-01-14
01 ISSUED FOR TENDER 2014-12-19

revision date

Do not scale drawings. Verify all dimensions and conditions on site and immediately notify the Departmental Representative of all discrepancies.

A Detail No. No. du détail
B drawing no. - where detail required dessin no. - où détail requis
C drawing no. - where detailed dessin no. - où détaillé

project title titre du projet
SCARBOROUGH Ontario
HEALTH CANADA BUILDING
2301 MIDLAND AVENUE
CFIA GTA LABORATORY
EXPANSION AND FIT-UP

drawing title titre du dessin
EXISTING FLOOR PLANS, RISER DIAGRAMS & SCHEDULES

drawn by dessiné par R.A.
designed by conçu par K.S.
approved by approuvé par J.S.
bld office project manager administrateur de projet

project date date du projet 2014-12-19
project no. no. du projet R.061999.001
drawing no. dessin no. E-4.01