







# VENTILATION LEGEND AND SPECIFICATIONS

## RECTANGULAR AIR DUCTS

6	12	24
3	6	12

RECTANGULAR AIR DUCTS SHALL BE GALVANIZED STEEL, ASTM-A653/A653M, G90 ZINC, AS PER CHAPTER 1 RECOMMENDATIONS BUT CONFORM TO THE SCHEDULE BELOW "AIR DUCT SEAL CLASS" TO THE COMMENTS OF TABLE 1-1 @ 1-15 INCLUSIVE. IN SMOGA'S HVAC DUCT CONSTRUCTION STANDARD, ROUND AIR DUCTS OR ROUND SPINAL AIR DUCTS SHALL BE GALVANIZED STEEL, ASTM-A653, G90 ZINC, AS PER CHAPTER 3 RECOMMENDATIONS BUT CONFORM TO THE SCHEDULE BELOW "AIR DUCT SEAL CLASS" TO THE COMMENTS OF TABLE 1-1 @ 1-15 INCLUSIVE. THE MANUFACTURER AND THE INSTALLATION CONTRACTOR MUST SELECT SPECIFIC TYPES IN THE SMOGA HVAC DUCT CONSTRUCTION STANDARD, METAL & FLEXIBLE, LATEST APPLIED EDITION, WHICH MEET THE PERFORMANCE CRITERIA IDENTIFIED IN THE SMOGA HVAC DUCT CONSTRUCTION STANDARD, METAL AND FLEXIBLE, LATEST APPLIED EDITION. WHEN THE AIR DUCT SEAL CLASS IS NOT INDICATED, 14" HIGH WATER COLUMN (250 PA) CLASS SHALL BE USED. ALL VARIABLE AIR VOLUME DUCTS DOWNSTREAM OF A VAV BOX SHALL BE DESIGNED FOR A 2 INCHES WATER COLUMN (500 PA) PRESSURE.

**SUPPORTS AND HANGERS:**  
 - RESPECT SMOGA'S RECOMMENDATIONS IN HVAC DUCT CONSTRUCTION STANDARDS, METAL & FLEXIBLE, CHAPTER 4. PERFORATED STRIP METAL STRIPS WILL NOT BE ACCEPTED OR TOLERATED.  
 - SUPPORTS AND HANGERS SHALL BE GALVANIZED STEEL AND SHALL BE UTILIZED IN CONJUNCTION WITH SMOGA'S RECOMMENDATIONS AND INSTRUCTIONS DESCRIBED IN THE MECHANICAL SPECIFICATION SHEET UNDER THE TITLE "TECHNICAL INSTRUCTIONS FOR SPECIFIC PROTECTION EXCEPT" TO RESPECT THE PRESERVED DRAWINGS.

## AIR DUCT SEAL CLASS

SYSTEM PRESSURE IN. W.C. (Pa)	AIR DUCT SEAL CLASS		
	A	B	C
4" @ 10" W.C. (1000 @ 2500 Pa)	1/4" @ 3/4" W.C. (312 @ 873 Pa)	1/2" @ 1" W.C. (125 @ 250 Pa)	
REQUIRED SEALING	TRANSVERSAL SEAMS, LONGITUDINAL SEAMS AND THROUGH WALL AND THROUGH WALL PASSEGES	TRANSVERSAL SEAMS, LONGITUDINAL SEAMS AND CONNECTIONS	TRANSVERSAL SEAMS AND CONNECTIONS

UNLESS OTHERWISE SPECIFIED, MINIMUM ACCEPTABLE LEAKAGE CLASS, AS PER SMOGA HVAC AIR DUCT LEAKAGE TEST MANUAL, (C)

LEAKAGE TESTS	YES	NO	NO
SITE TEST REQUIRED	YES	NO	NO
LEAKAGE TESTS SHALL BE EXCLUDED AS PER SMOGA'S RECOMMENDATIONS FROM THE HVAC DUCT LEAKAGE TEST MANUAL, DE SMOGA'S HVAC LATEST APPLIED EDITION.			

**SEALANT PRODUCT**  
 SEALING PRODUCT: S-2 (RED) BY DURO-DYNE  
 SEALING PRODUCT: DMV (GREEN) BY DURO-DYNE  
 SELF ADHESIVE DUCT TAPE

**TYPE TO BE USED**  
 SEALING PRODUCT: S-2 (RED) BY DURO-DYNE  
 SEALING PRODUCT: DMV (GREEN) BY DURO-DYNE  
 SELF ADHESIVE DUCT TAPE

EXTENSIVE AIR DUCTS SHALL BE SEALED WITH A PRODUCT APPROVED FOR SERVICE USE AND BEFORE THE INSTALLATION OF THE THERMAL INSULATION. THE SEALANT SHALL BE APPLIED AS WELL AS AIR TIGHT. THIS SEALANT SHALL ADHERE TO THE METAL DUCT, MUST REMAIN FLEXIBLE WITH THE DUCT'S MOVEMENT AND MUST HAVE A TEMPERATURE SERVICE RANGE BETWEEN -40°C (-40°F) AND 125°C (257°F). THE SEALANT SHALL BE APPLIED TO ALL JOINTS THAT ALSO BE RESISTANT TO ULTRAVIOLET RAYS AND TO OZONE. DO NOT SEAL JOINTS THAT CONNECTS A DUCT TO A FRESH DAMPER.

**SEALING PRODUCTS (CLASS A ET-B):**  
 - OIL RESISTANT, FIRE-PROOF POLYMER BASE, LOOSE ARMOURED, POLYVINYL TREATED, 2" (50MM) WIDE, AS PER CAN/DUC-5109.

**SEALING TAPE (CLASS B):**  
 - CONSTRUCTION AS PER SMOGA HVAC DUCT CONSTRUCTION STANDARDS, METAL & FLEXIBLE, LATEST APPLIED EDITION.

**ALUMINIUM TAPE (CLASS C):**  
 - CONSTRUCTION AS PER SMOGA HVAC DUCT CONSTRUCTION STANDARDS, METAL & FLEXIBLE, LATEST APPLIED EDITION.

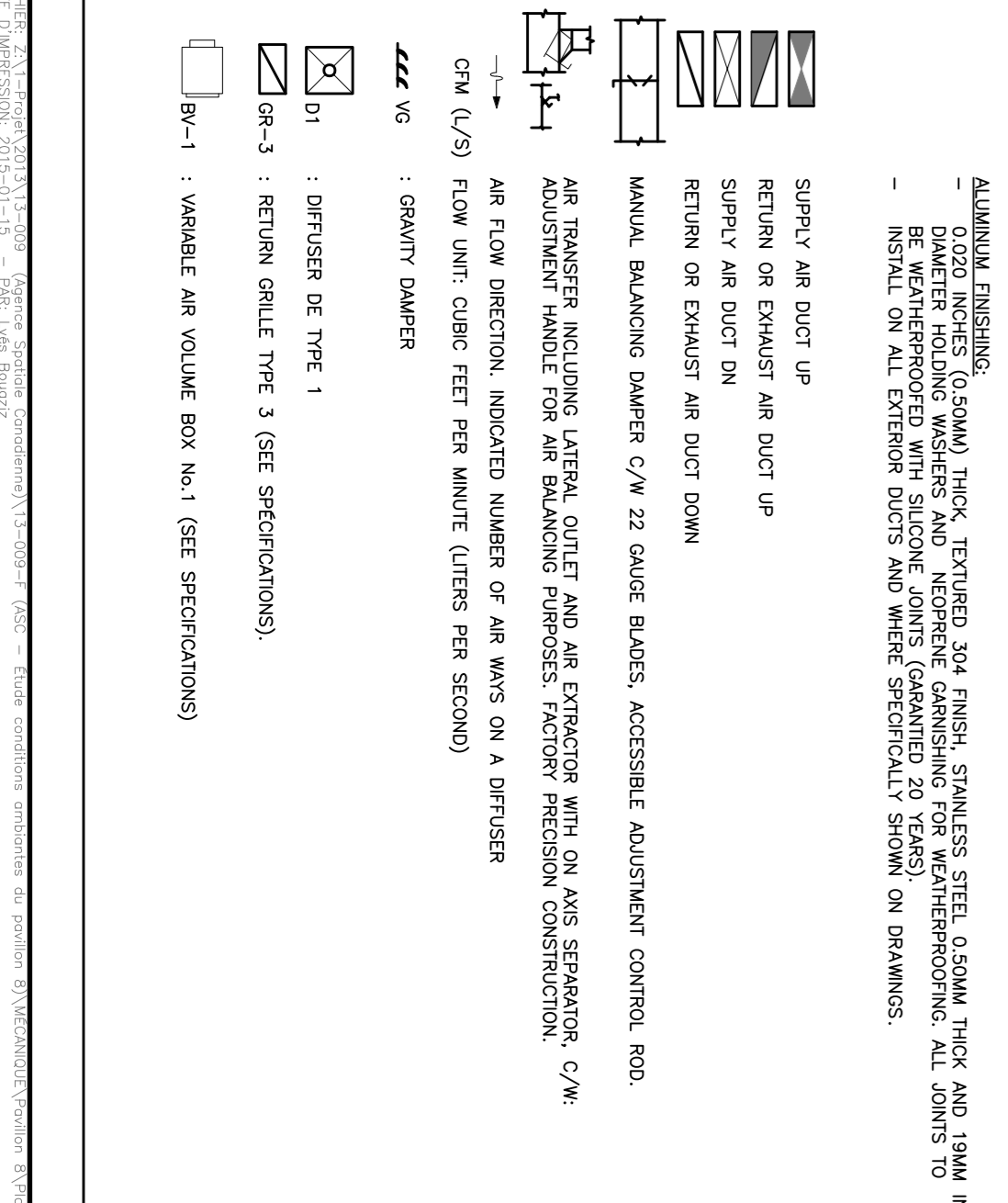
**INSTALLATION:**  
 - EXECUTE WORKS AS PER SMOGA STANDARD AND SMOGA CONTRACT.  
 - SHOULDERS AND SUSPENSIONS ROOFS: EXTEND THE DUCT'S INSULATION 4" INCHES (100MM) ON THE INSULATION SHOULDERS.  
 - INSULATION JOINTS ON EACH SIDE OF A FIRE RATED WALL.  
 - WATER TIGHT AIR DUCTS SHALL BE WATER TIGHT:  
 a. EXTERIOR DUCTS  
 b. FRESH AIR DUCTS

**THERMAL INSULATION:**  
 - (ACQ 7-2): SOFT MINERAL FIBER SHEETS WITH FACTORY INSTALLED WOOD BARRIER BY "THERMAK" SERIES 75, 1 1/2 INCHES (38MM) THICK, INSTALL ON 8 INCHES (200MM) OR SIMILAR DUCTS.  
 - (ACQ 7-1): RIGID MINERAL FIBER SHEETS WITH FACTORY INSTALLED WOOD BARRIER BY "THERMAK" SERIES 75, 1 1/2 INCHES (38MM) THICK, INSTALL ON 8 INCHES (200MM) OR SIMILAR DUCTS.  
 - (50MM) THICK FOR EXTERIOR DUCTS, INSTALL ON 8 INCHES (200MM) OR LARGER DUCTS.  
 - AS PER CAN/DUC-5107 STANDARD, FLAME SPREAD MUST NOT EXCEED 25 AND SMOKE SPREAD INSTALL AS PER MANUFACTURER'S INSTRUCTIONS.

**INSTALL AT FOLLOWING LOCATIONS:**  
 - ON HVAC SYSTEMS, ON SUPPLY AND RETURN DUCTS, 15 FEET (4500MM) IN ALL DIRECTIONS.  
 - STARTING FROM ROOF FROM EXTERIOR WALL OR ROOF TO HEATING ELEMENT OR WARM BOX, ON EXHAUST DUCTS, 15 FEET (4500MM) IN ALL DIRECTIONS, STARTING FROM ROOF OR EXTERIOR WALL.  
 - WHERE SPECIFICALLY SHOWN ON DRAWINGS.

**GLASSES FINISHING:**  
 - CONTIN CHANGES WITH A MASS OF 250 G/M2, ARMORED, INDICES THERMAL AND FIRE RATED GLUE, INSTALL ON ALL VISIBLE INTERIOR DUCTS AND DUCTS INSTALLED IN A MECHANICAL ROOM AND WHERE SPECIFICALLY SHOWN ON DRAWINGS.

**ALUMINIUM FINISHING:**  
 - (200) INCHES (50MM) THICK, TYPICAL 304 FINISH, STAINLESS STEEL, 0.50MM THICK AND 19MM IN WIDTH, FINISH WITH SMOGA'S FINISHING PRODUCT, INSTALL ON ALL VISIBLE INTERIOR DUCTS AND DUCTS INSTALLED IN A MECHANICAL ROOM AND WHERE SPECIFICALLY SHOWN ON DRAWINGS.



# VENTILATION SPECIFICATIONS

**4-URC-01: EXHAUST FAN**  
 MAKE: GREENECK OR EQUIVALENT ALUMINIUM CONSTRUCTION.  
 MODEL: 863 CPM (407 L/S) FOR 0.25" ea (63 Pa); 745 CPM (350 L/S) FOR 0.375" ea (94 Pa).  
 SIZE: 12" x 12" x 12"  
 COLOUR: WHITE  
 ACCESSORIES: BR0 SCREEN AND BR0 DAMPER MOTOR.  
 MODEL: 863 CPM (407 L/S) AND A MAXIMUM AIR FLOW OF 863 CPM (407 L/S) INDICATED.

**4-URC-02: VARIABLE AIR VOLUME BOX No.1**  
 MAKE: E.H. PRICE  
 MODEL: SV-5000, C/W INTERNAL ACOUSTICAL INSULATION  
 SIZE: 12" x 12" x 12"  
 COLOUR: WHITE  
 ACCESSORIES: 12" x 8" PREPARED MULTI-POINT FLOW SENSOR SP-280.  
 MODEL: SV-5000, C/W INTERNAL ACOUSTICAL INSULATION  
 SIZE: 12" x 12" x 12"  
 COLOUR: WHITE  
 ACCESSORIES: CHANGE OVER ACCORDING TO THE TEMPERATURE, MOTOR, DUCT BALANCE FOR THE AIR FLOW SPECIFIED ON DRAWINGS.

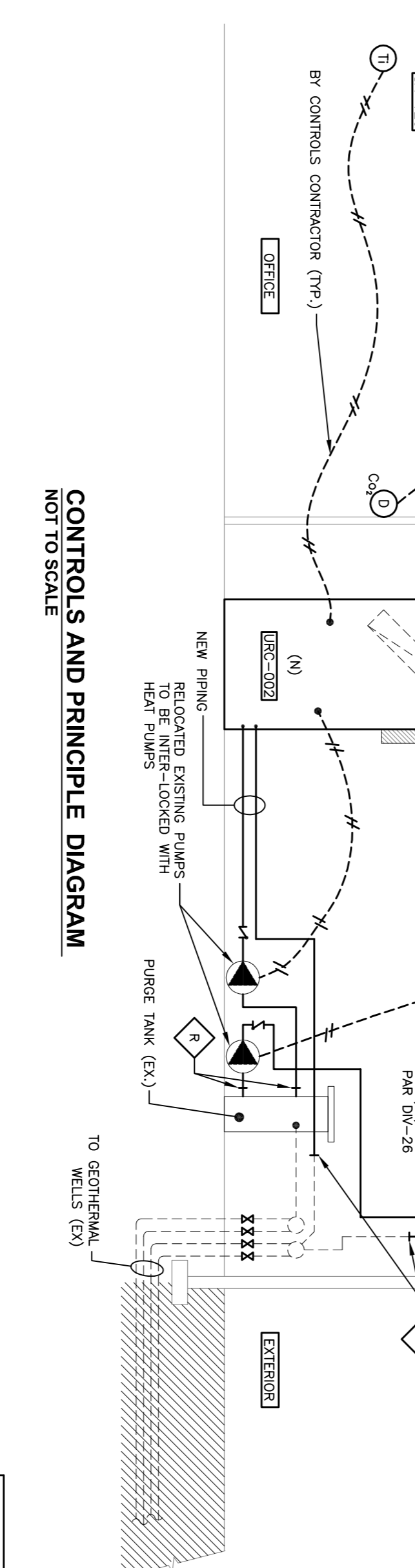
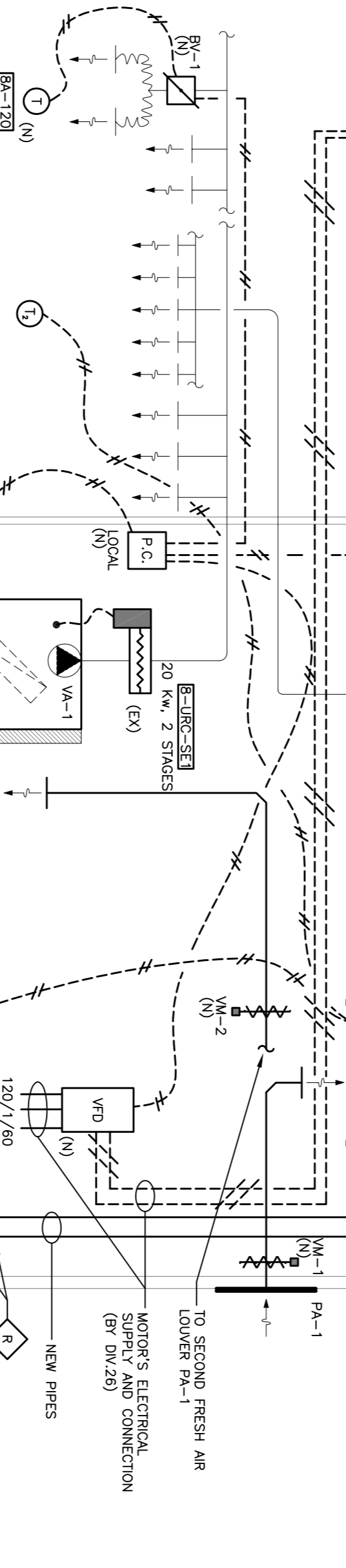
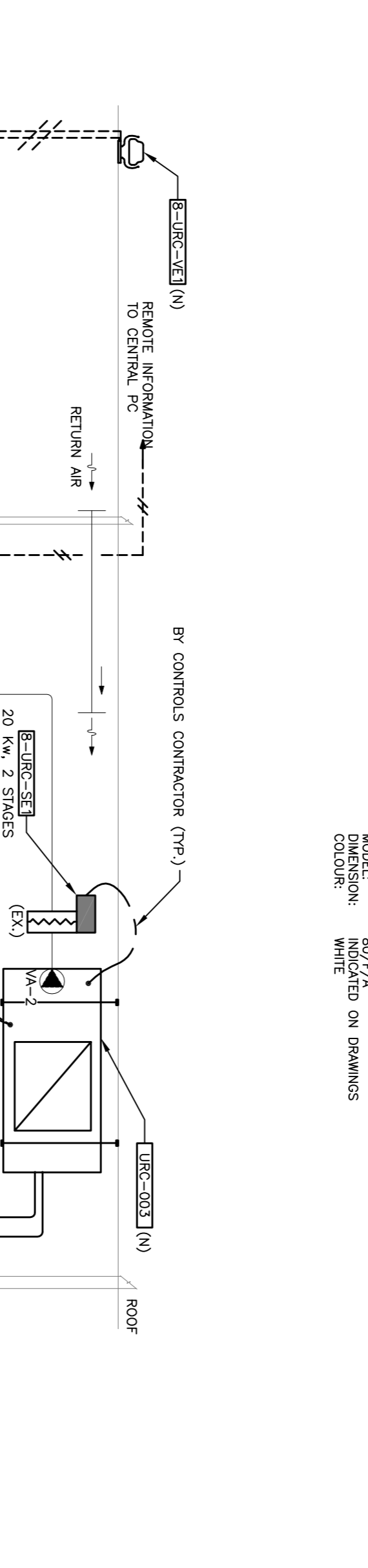
**D-1: DIFFUSER TYPE 1**  
 MAKE: E.H. PRICE  
 MODEL: SH, 17  
 COLOUR: WHITE  
 ACCESSORIES: 1788

**VFD: VARIABLE FREQUENCY DRIVER**  
 MAKE: SCHNEIDER  
 MODEL: COMPATIBLE WITH THE EXISTING CO2 SENSOR AND THE CONTROLS C/W UPSTREAM AND DOWN SUPPLIED, INSTALLED AND CONNECTED BY THE CONTROLS CONTRACTOR POWER AND MOTOR CONNECTED BY THE ELECTRICAL CONTRACTOR (DW, 26)

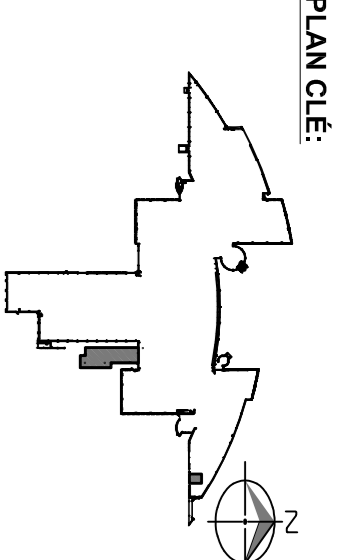
**GR-3: RETURN GRILLE**  
 MAKE: E.H. PRICE  
 MODEL: 80/1A  
 COLOUR: WHITE  
 ACCESSORIES: 1788

**PA-1: MOTORIZED DAMPER**  
 MAKE: TAILO  
 MODEL: 600 WITH INSULATED BLADES  
 DIMENSION: 12" x 12" x 12"  
 COLOUR: WHITE  
 ACCESSORIES: BR0 SCREEN AND BR0 DAMPER MOTOR.  
 MODEL: 863 CPM (407 L/S) AND A MAXIMUM AIR FLOW OF 863 CPM (407 L/S) INDICATED.

**4-URC-02: GEOTHERMAL HEAT PUMP**  
 MAKE: GEOTHERMAL HEAT PUMP OR APPROVED EQUIPMENT  
 MODEL: SERIES SORT AS PER INDICATION, CERTIFIED AHJ/50 12356-1 ET, AND UL1995.  
 COLOUR: BY AGREEMENT



**NOTES:**  
 1. ALL EQUIPMENT SHOWN ARE EXISTING, UNLESS INDICATED (N)  
 2. THE SEQUENCE INDICATED BELOW MODIFIES THE EXISTING SEQUENCE, WHICH IS NOT INDICATED, THE EXISTING CONTROLS AND THEIR SEQUENCE SHALL BE MAINTAINED AS SHOWN, UNLESS OTHERWISE INDICATED.  
 3. PUMP, COILS AND HUMIDIFIER INTER-LOCKING MUST BE REDONE.  
**SEQUENCE:**  
 1. WHEN THE SYSTEM IS OFF, THE URC-002 ET URC-003 HEAT PUMPS, THEIR PUMPS, COILS, HUMIDIFIER AND THE FAN URC-01 ARE OFF AND MOTORIZED DAMPERS WA-1 AND WA-2 ARE CLOSED.  
 2. AT SYSTEM START-UP, A BURNER COMMUNICATION SIGNAL FROM THE CENTRAL MANAGEMENT COMPUTER, THE EQUIPMENT AND ACCESSORIES BELOW START-UP AND OPEN AT THEIR CALIBRATED POSITIONS.  
 3. UPON DEMAND AT SENSOR T1, THE HEAT PUMP #URC-003 STARTS-UP IN COOLING MODE, AND ITS PUMP STARTS UP TO CIRCULATE THE WATER-METHANOL SOLUTION IN THE CONDENSER, SAME SEQUENCE FOR T2 ET URC-002.  
 4. UPON A HEATING DEMAND AT SENSOR T1 OR T2, HEAT PUMPS #URC-002 ET URC-003 OPERATE ON THE FIRST HEATING STAGE, THEIR RESPECTIVE PUMPS ARE IN OPERATION, IF THEIR TEMPERATURES ARE NOT SATISFIED AT THEIR SENSORS, THEN THEIR RESPECTIVE REHEAT COILS FOR EACH ZONE CYCLES TO MAINTAIN THEIR SET POINTS.  
 5. ROOM BA-1-20 ROOM TEMPERATURE SHALL BE SENT TO THE CENTRAL PANEL AT PAN1.  
 6. ROOM BA-1-20 ROOM TEMPERATURE MUST BE READ AND ADJUSTED IN THE ROOM VIA THE WALL THERMOSTAT.  
 7. THE CO2 SENSOR TRANSMITS A PM LECTURE TO THE CENTRAL PC - EXISTING SIGNAL - THIS READING WILL HAVE TO BE TRANSMITTED VIA THE NEW CONTROLLER (TO BE SUPPLIED) IN A LOCAL PC (N). THIS NEW CONTROLLER WILL PERMIT THE VAV BOX #BV-1 TO MODULATE TO MAINTAIN THE SET POINT OF THE THERMOSTATIC SENSORS SET POINT (N) IN THE ROOM BA-1-20, AND IT WILL TRANSMIT A SIGNAL TO THE VARIABLE FREQUENCY SPEED DRIVERS STARTERS WHICH WILL VARY THE SPEED OF THE FAN TO MAINTAIN 700 PMH AT THE SENSOR (N)



**AGENCE SPATIALE CANADIENNE**  
 PAVILLON 8 / PAVILLON 8  
 AMBIANTES / IMPROVEMENTS OF  
 AMBIENT CONDITIONS  
 6767 route de l'aéroport, Saint-Hubert (Québec)

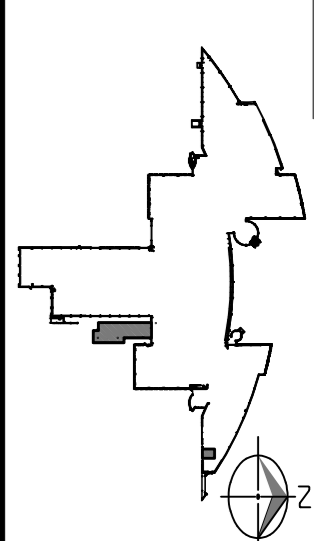
**MECHANICAL LEGEND, SPECIFICATIONS & CONTROLS DIAGRAM**  
 L'ES BOUQUINIZ  
 projet / revu / vérifié par: M.M. JR. ROY, ing.  
 date: / /  
 client / destinataire: AGENGE SPATIALE CANADIENNE  
 projet / revu / vérifié par: M.M. JR. ROY, ing.  
 date: / /  
 client / destinataire: AGENGE SPATIALE CANADIENNE

**ROCHON**  
 EXPERTS CONSEILS INC.  
 Mécanique - Électrique

**climose**  
 LEVY CHAMBERLAIN  
 TECHNOLOGIE PROFESSIONNELLE  
 1000, RUE D'ARLON, 1000  
 TEL: 514-352-2122  
 WWW.CLIMOSE.COM

**AGENCE SPATIALE CANADIENNE**  
 PAVILLON 8 / PAVILLON 8  
 AMBIANTES / IMPROVEMENTS OF  
 AMBIENT CONDITIONS  
 6767 route de l'aéroport, Saint-Hubert (Québec)

**MECHANICAL LEGEND, SPECIFICATIONS & CONTROLS DIAGRAM**  
 L'ES BOUQUINIZ  
 projet / revu / vérifié par: M.M. JR. ROY, ing.  
 date: / /  
 client / destinataire: AGENGE SPATIALE CANADIENNE



CE PLAN NE PEUT ÊTRE UTILISÉ POUR  
 DÉTERMINER LE SENS DES LIGNES  
 DE CONSTRUCTION. LE SENS DES  
 LIGNES DE CONSTRUCTION NE PEUT  
 ÊTRE DÉTERMINÉ QUE PAR LE PLAN  
 DE CONSTRUCTION. LE SENS DES  
 LIGNES DE CONSTRUCTION NE PEUT  
 ÊTRE DÉTERMINÉ QUE PAR LE PLAN  
 DE CONSTRUCTION.

15-01-2015  
 11-M-444  
 15-01-2015  
 11-M-444

AGENCE SPATIALE CANADIENNE  
 CANADIAN SPACE AGENCY  
 6767 route de l'Aéroport, Saint-Hubert (Québec)  
 6767 route de l'Aéroport, Saint-Hubert (Québec)  
 6767 route de l'Aéroport, Saint-Hubert (Québec)  
 6767 route de l'Aéroport, Saint-Hubert (Québec)

**ROCHON**  
 EXPERTS CONSEILS INC.  
 Mécanique - Électrique

**CLIMOSE**  
 ÉQUIPEMENT CLIMATISÉ  
 ÉQUIPEMENT CLIMATISÉ  
 ÉQUIPEMENT CLIMATISÉ

**MAJ RÔY JR.**  
 MAJ RÔY JR.  
 MAJ RÔY JR.

NO. DE PROJET ROCHON: 13-0094F  
 ÉCHELLE: 1:100  
 ÉCHELLE: 1:100  
 ÉCHELLE: 1:100  
 ÉCHELLE: 1:100

