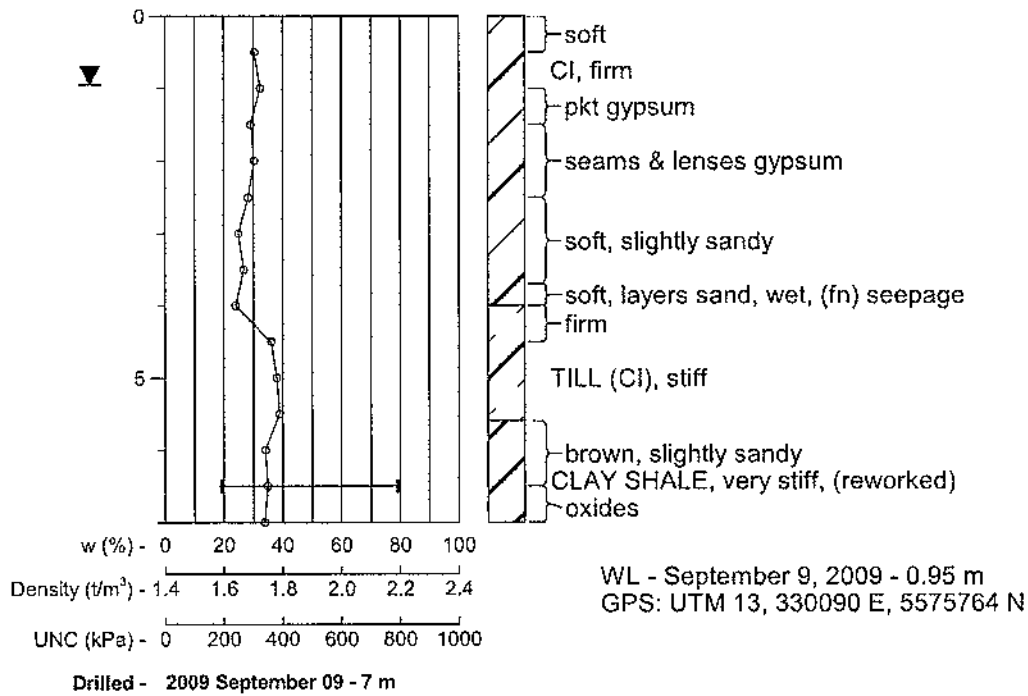



# BH32

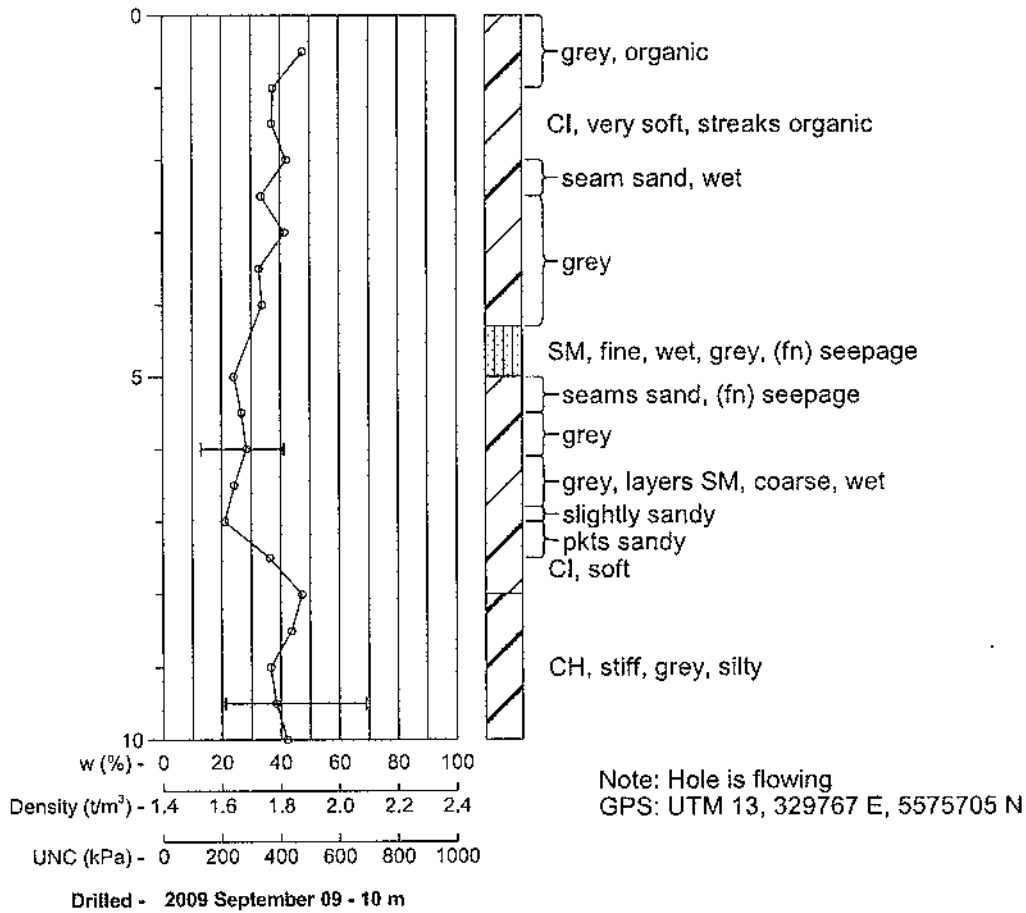
EL 717.453 m



 Agriculture and Agri-Food Canada Agriculture et Agroalimentaire Canada	<b>Highfield Dam</b> NE 36-15-11 W3, Toe of Dam			<b>BH32</b>	
	Drawn/Checked: RP/KB/VK	2010/02/15	4547:928:7H4	358911	1 of 1

# BH33

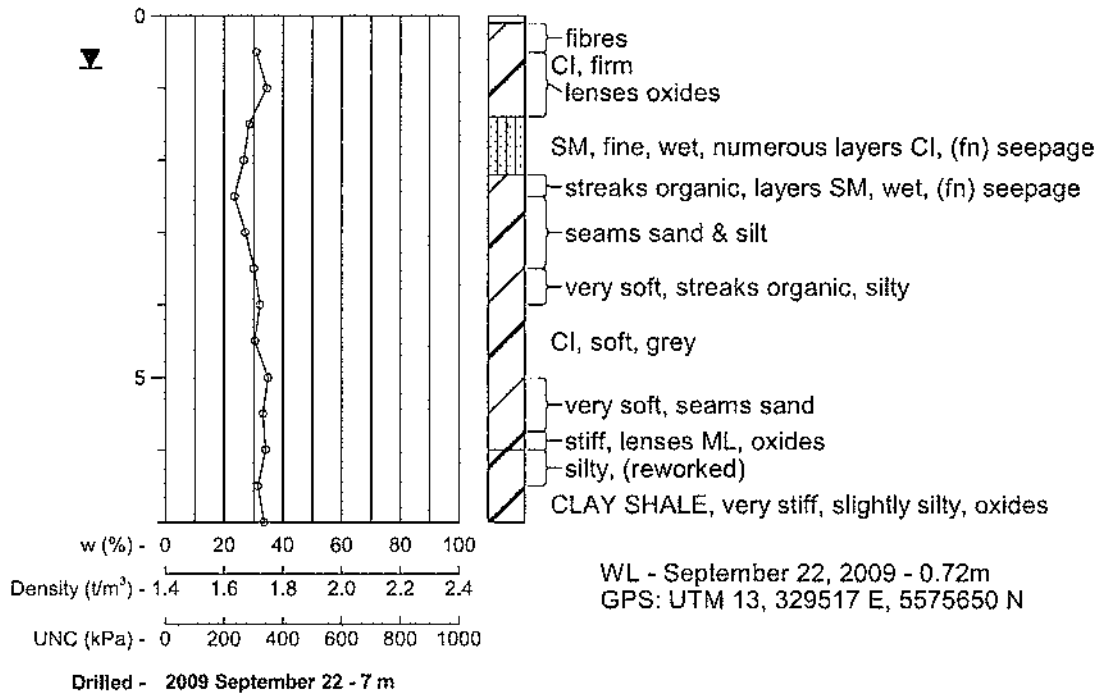
EL 716.907 m



	<b>Highfield Dam</b> NE 36-15-11 W3, Toe of Dam				<b>BH33</b> 1 of 1
	Agriculture and Agri-Food Canada	Agriculture et Agroalimentaire Canada	Drawn/Checked: <b>RP/KB/VK</b>	2010/02/15 4547:928:7H4 358912	

# BH34

EL 716.878 m



Agriculture and  
Agri-Food Canada

Agriculture et  
Agroalimentaire Canada

## Highfield Dam NE 36-15-11 W3, Toe of Dam

BH34

Drawn/Checked: NB/GC/VK

2010/02/15

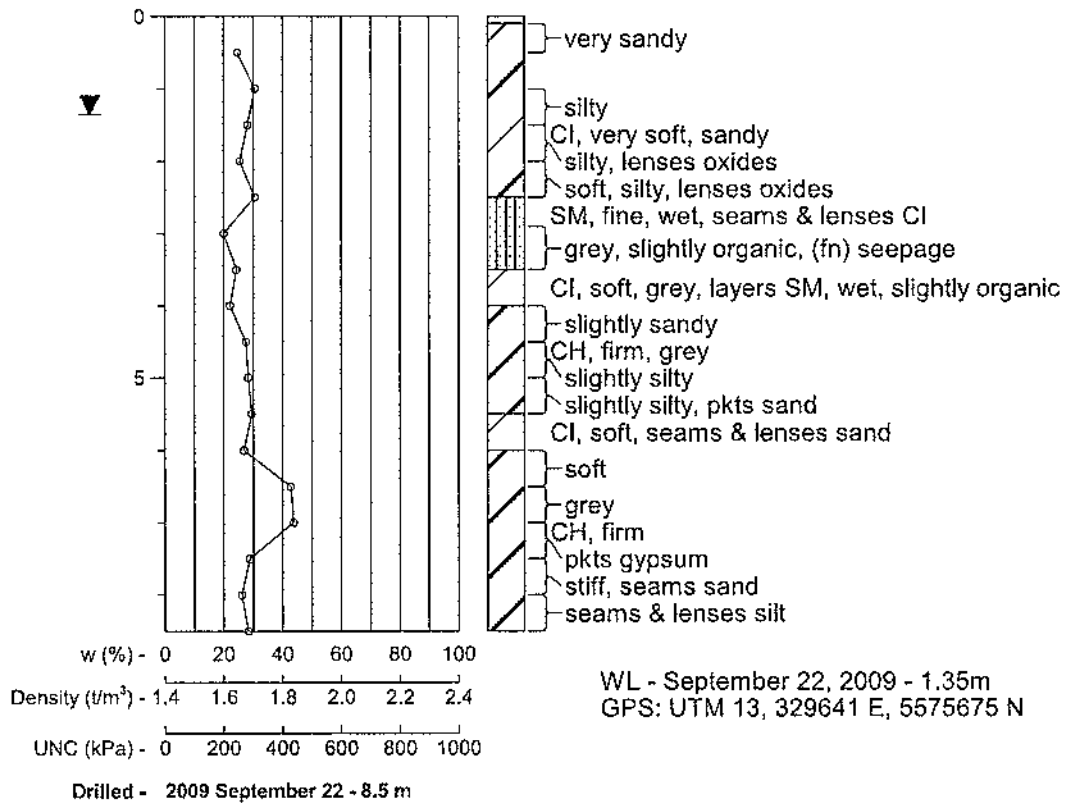
4547:928:7H4

358913

1 of 1

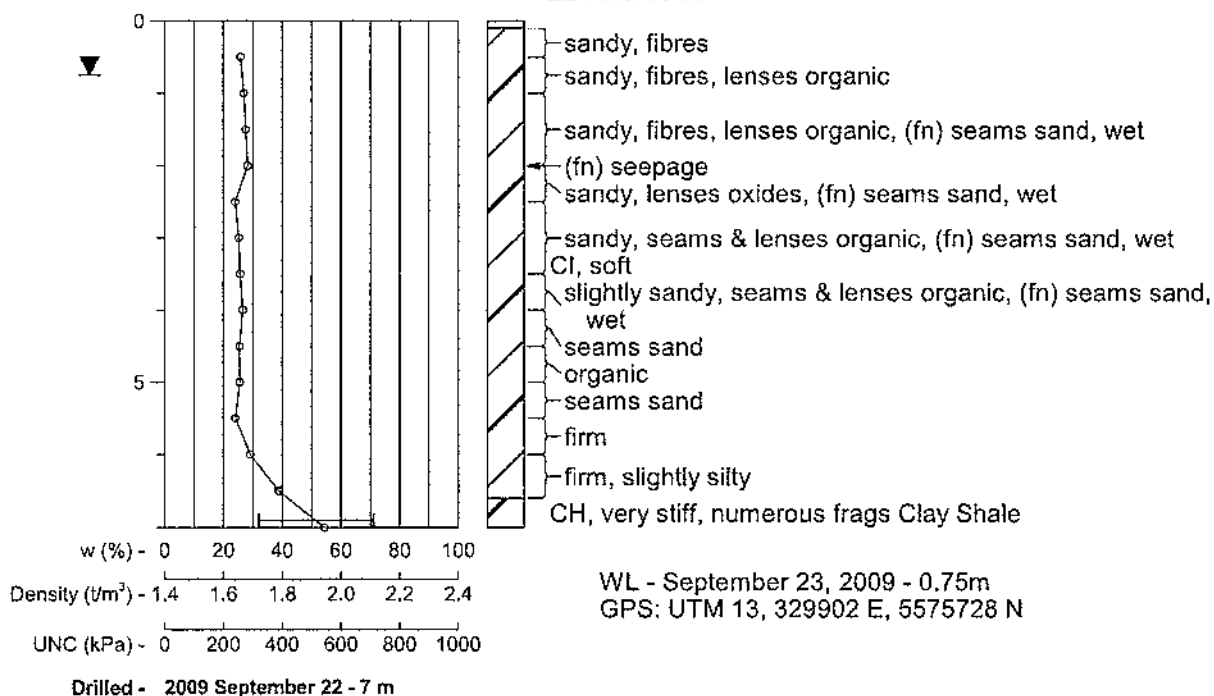
# BH35

EL 717.548 m



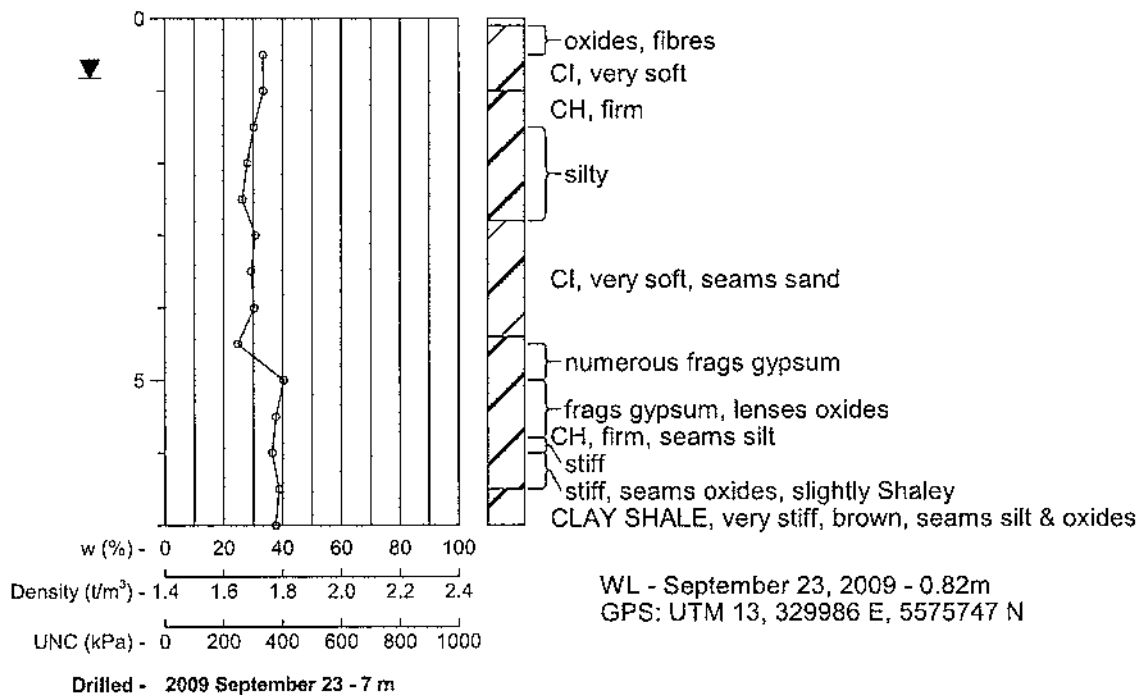
## BH37

EL 717.776 m



## BH38

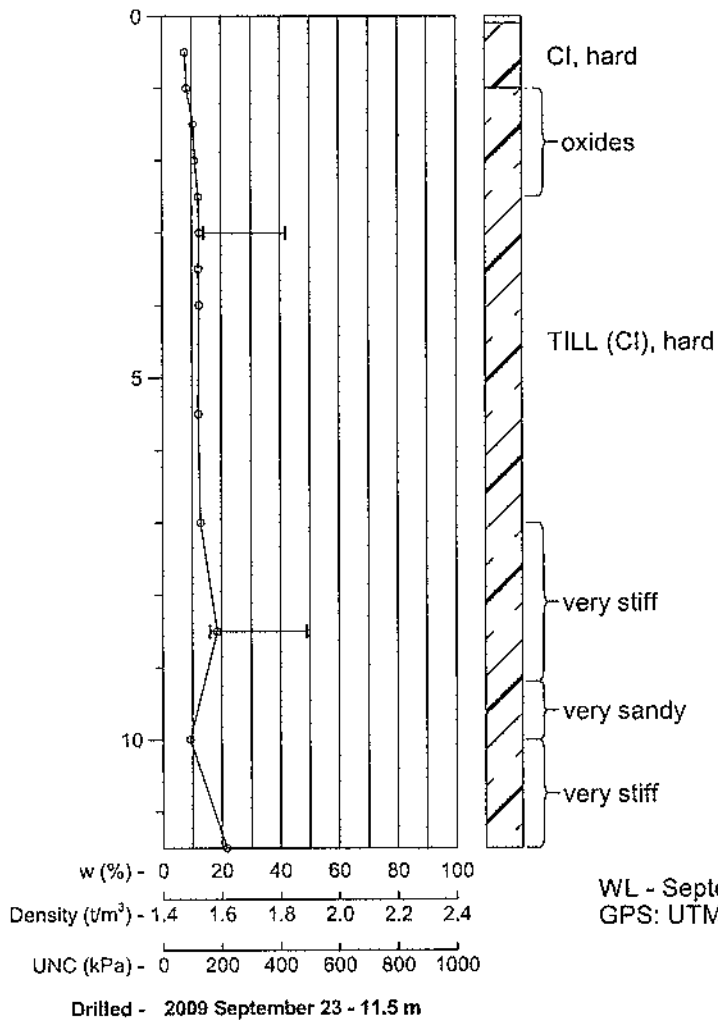
EL 717.667 m



 Agriculture and Agri-Food Canada		<b>Highfield Dam</b>	
Agriculture et Agroalimentaire Canada		NE 36-15-11 W3, Toe of Dam, d/s C/L	
Drawn/Checked:	NB/KB/VK	2010/03/09	4547:928:7H4 358916

# BH40

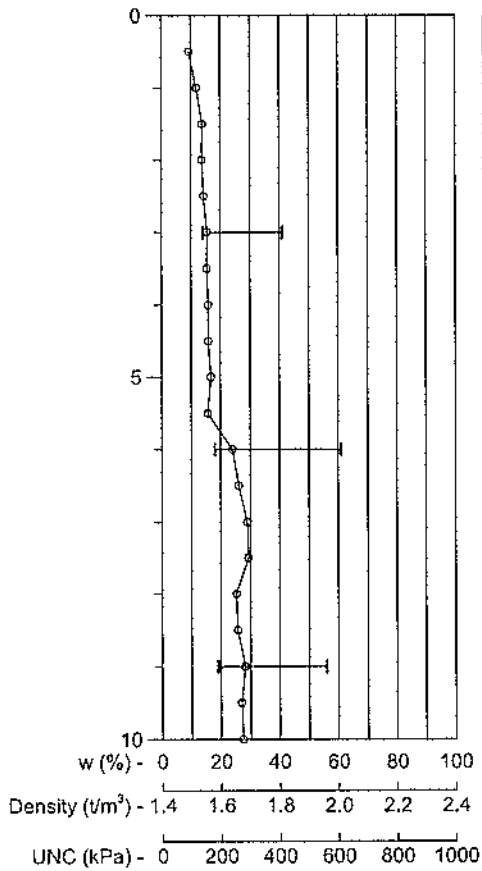
EL 732.545 m



WL - September 23, 2009 - Dry  
GPS: UTM 13, 330280 E, 5575842 N

# BH41

EL 728.394 m



hard  
hard, oxides  
hard

TILL (Cl), very stiff

TILL (CH), very stiff

stiff  
SM, fine, wet, clayey


CLAY SHALE, very stiff, brown, numerous oxides, silty

WL - September 23, 2009 - Dry

Note: Hole caved to 8.50m

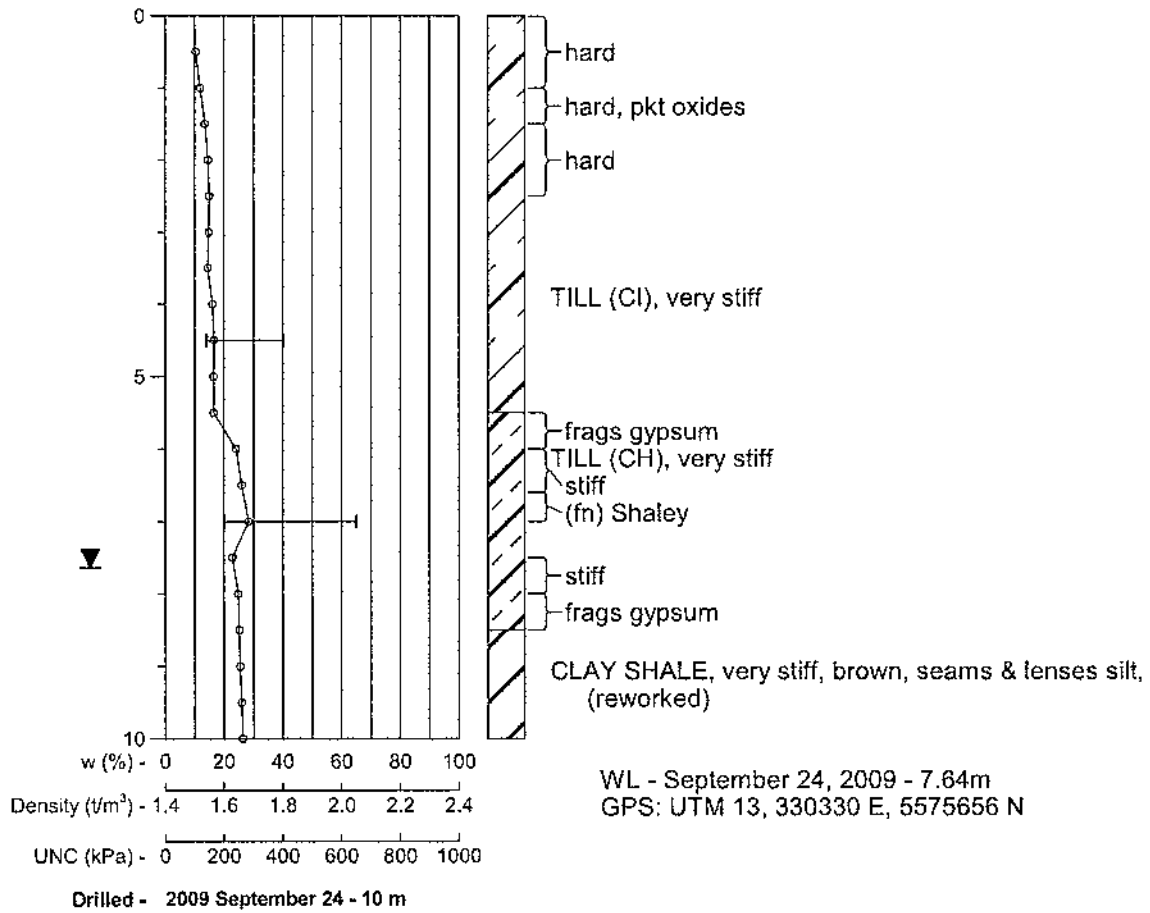
GPS: UTM 13, 330296 E, 5575802 N


Drilled - 2009 September 23 - 10 m

 Agriculture and Agri-Food Canada Agriculture et Agroalimentaire Canada	Highfield Dam NE 36-15-11 W3, Spillway C/L			BH41 1 of 1
	Drawn/Checked: NB/KB/VK	2010/03/22	4547:928:7H4 358919	

# BH42

EL 728.875 m

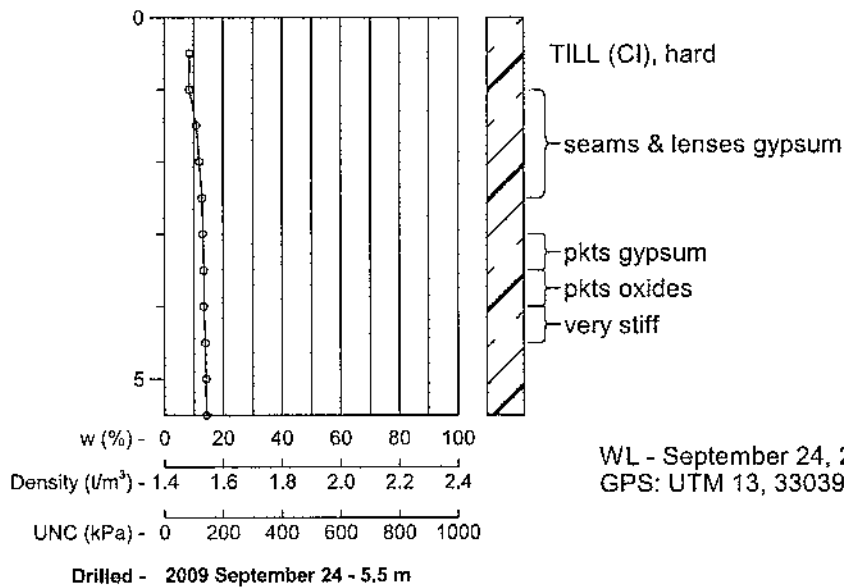


 Agriculture and Agri-Food Canada Agriculture et Agroalimentaire Canada	<b>Highfield Dam</b> <b>NE 36-15-11 W3, Spillway C/L</b>				<b>BH42</b> 1 of 1
	Drawn/Checked: NB/KB/VK	2010/03/22	4547:928:7H4	358920	



## BH43

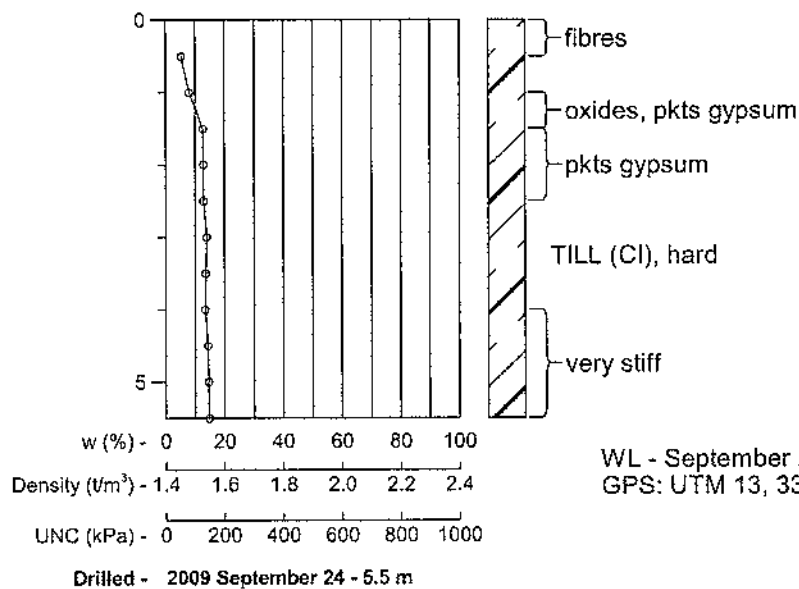
EL 730.910 m




WL - September 24, 2009 - Dry  
GPS: UTM 13, 330399 E, 5575644 N

## BH44

EL 729.021 m

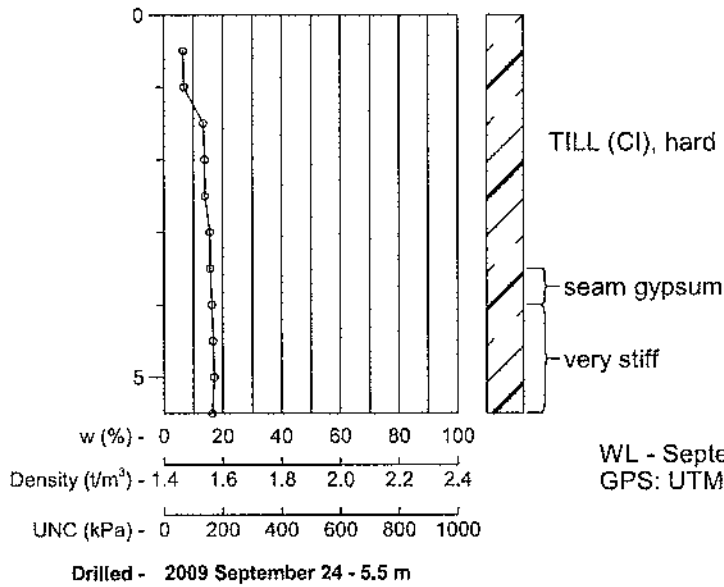


WL - September 24, 2009 - Dry  
GPS: UTM 13, 330426 E, 5575668 N

 Agriculture and Agri-Food Canada		<b>Highfield Dam</b> NE 36-15-11 W3, Borrow Area, East Abutment			
Agriculture et Agroalimentaire Canada		Drawn/Checked: NB/KB/VK	2010/02/15	4547:928:7H4	358921

## BH45

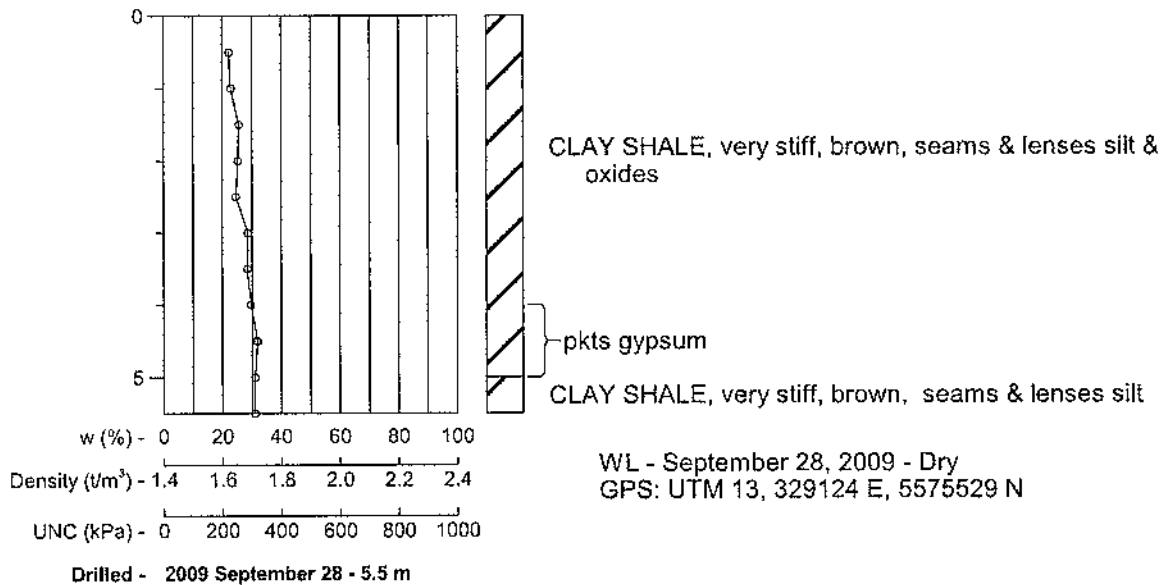
EL 730.577 m




WL - September 24, 2009 - Dry  
GPS: UTM 13, 330387 E, 5575709 N

## BH46

EL m

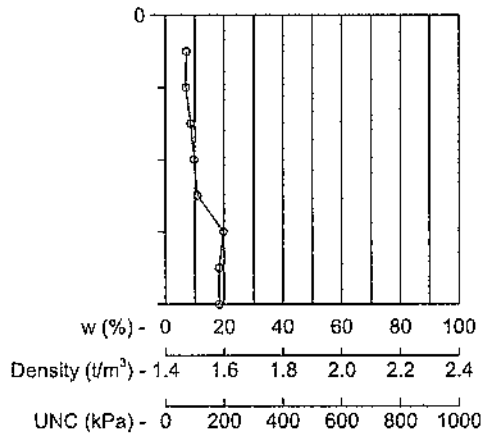


WL - September 28, 2009 - Dry  
GPS: UTM 13, 329124 E, 5575529 N

 Agriculture and Agri-Food Canada		<b>Highfield Dam</b>			
Agriculture et Agroalimentaire Canada		NE 36-15-11 W3, Borrow Area, East Abutment			
Drawn/Checked: NB/KB/VK		2010/02/15	4547:928:7H4	358922	

## BH47

EL 731.716 m



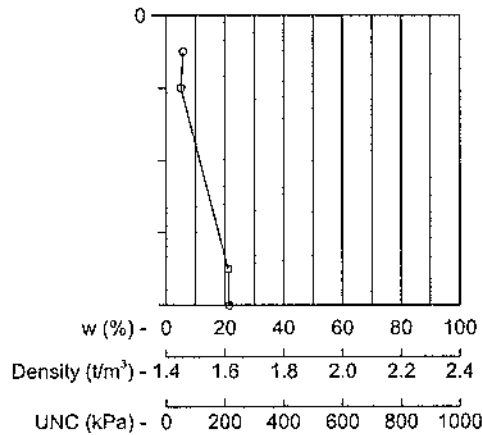
TILL (CI), hard  
(fn) cobbles  
very stiff  
CLAY SHALE, hard, brown, silty

WL - September 28, 2009 - Dry  
GPS: UTM 13, 328973 E, 5575558 N

Drilled - 2009 September 28 - 4 m

## BH48

EL 726.394 m

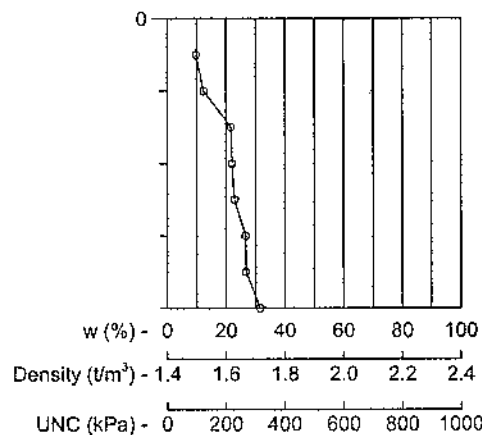


CI, very stiff, fibres  
SPSM, fine, dry, slightly gravelly  
SP, fine, dry, slightly gravelly  
CLAY SHALE, very stiff, brown, seams & lenses silt & oxides

Drilled - 2009 September 28 - 4 m

## BH49


EL 725.765 m



TILL (CI), hard  
hard  
CLAY SHALE, very stiff, brown, silty  
seams & lenses oxides & gypsum

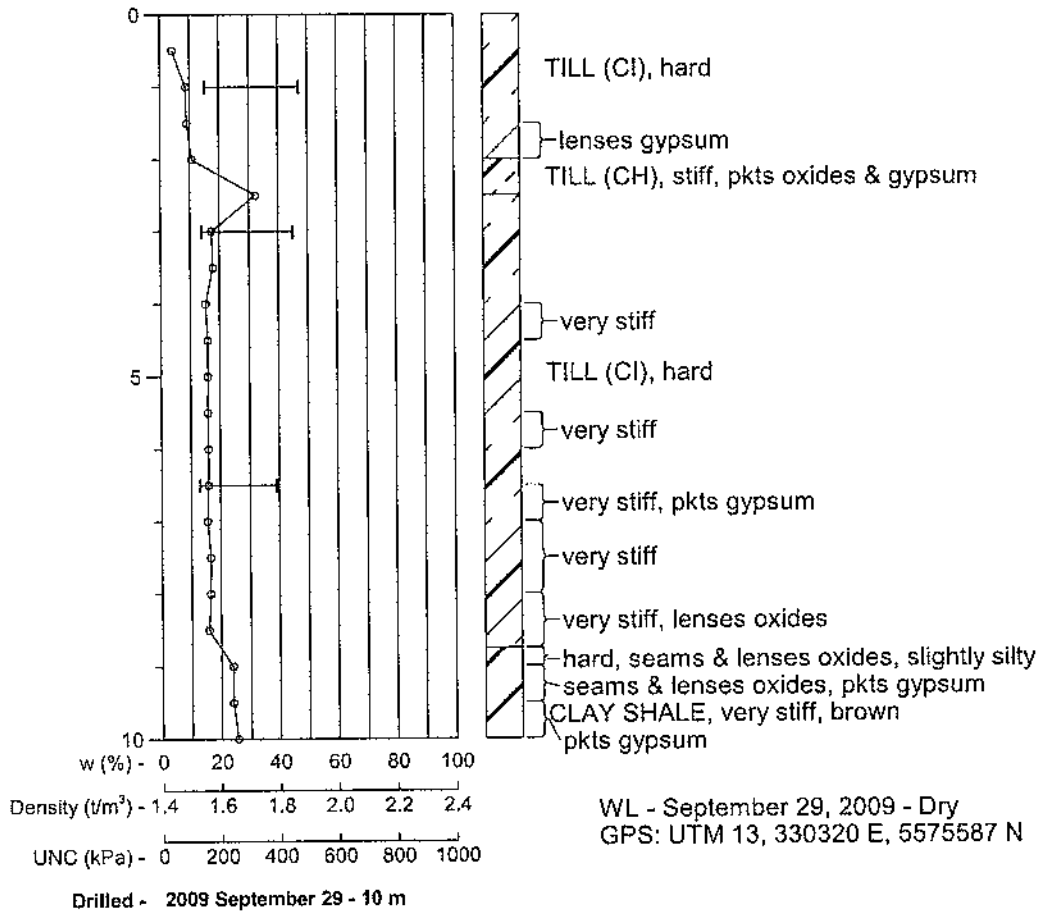
WL - September 29, 2009 - Dry  
GPS: UTM 13, 329070 E, 5575746 N

Drilled - 2009 September 29 - 4 m

 Agriculture and Agri-Food Canada		<b>Highfield Dam</b>		NE 36-15-11 W3, Borrow Area, West Abutment	
Agriculture et Agroalimentaire Canada		Drawn/Checked: NB/KB/VK		2010/02/15 4547:928:7H4 358923	

# C50

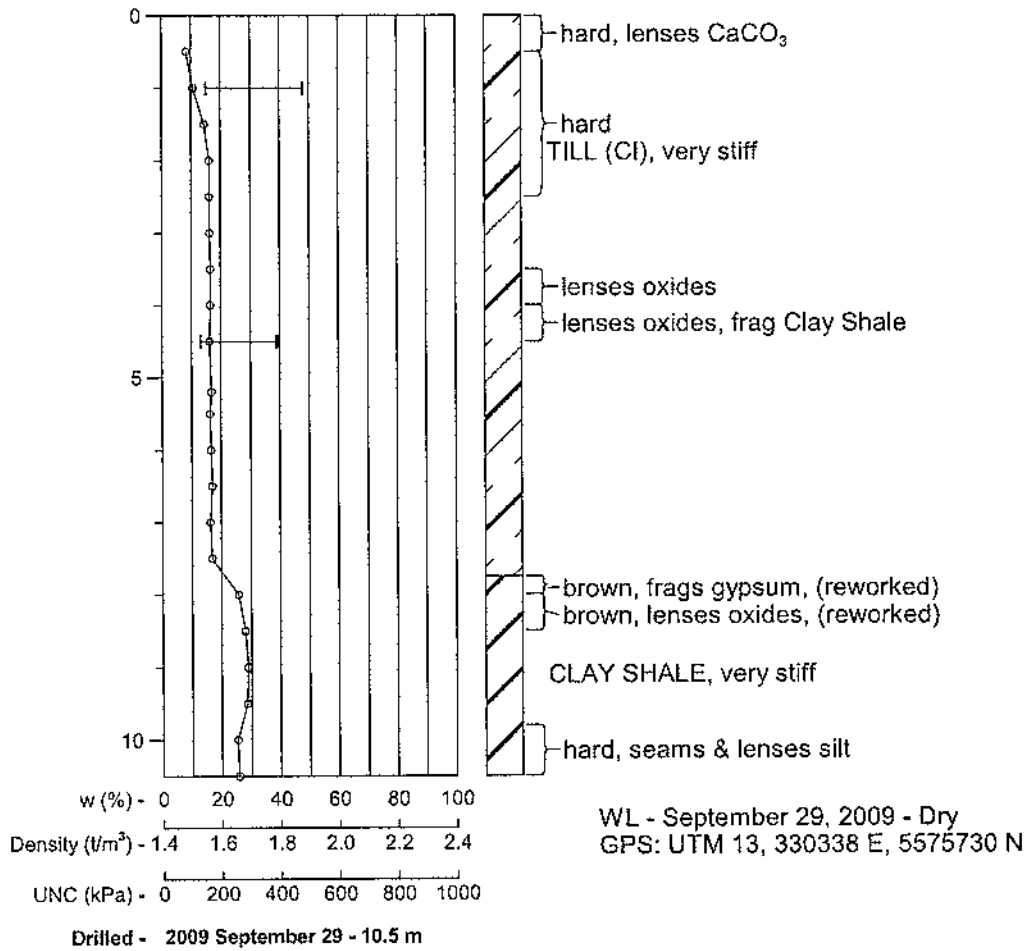
EL 730.985 m




Agriculture and Agri-Food Canada Agriculture et Agroalimentaire Canada	<b>Highfield Dam</b> <b>NE 36-15-11 W3, Spillway Channel C/L, East Abutment</b>				<b>C50</b> 1 of 1
	Drawn/Checked: NB/KB/VK	2010/03/22	4547:928:7H4	358924	

# C51

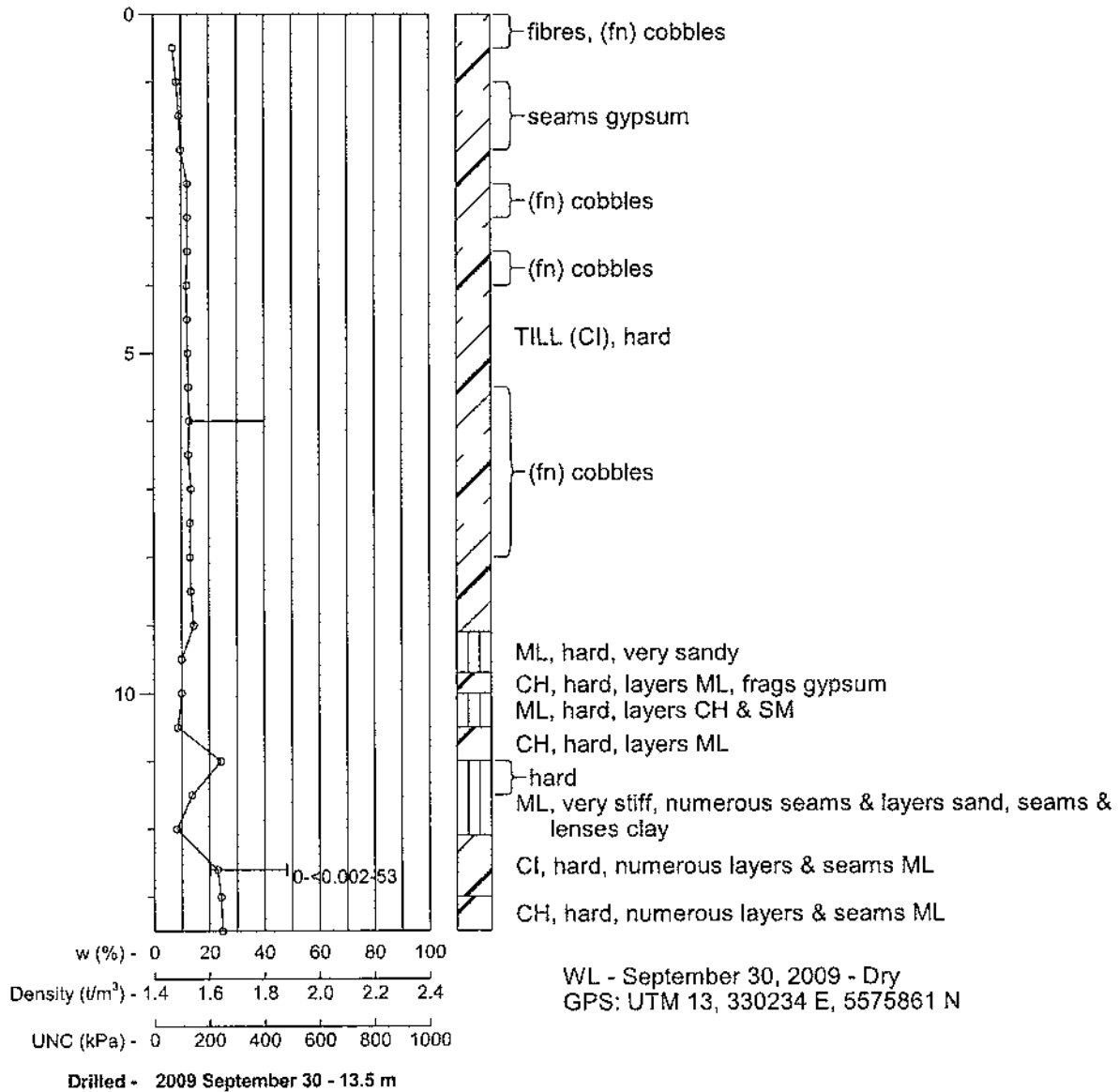
EL 728.785 m




 Agriculture and Agri-Food Canada Agriculture of Agri-Food Canada	<b>Highfield Dam</b> <b>NE 36-15-11 W3, Spillway Channel C/L, East Abutment</b>				<b>C51</b>  1 of 1
	Drawn/Checked: NB/KB/VK	2010/03/22	4547:928:7H4	358925	

# C52

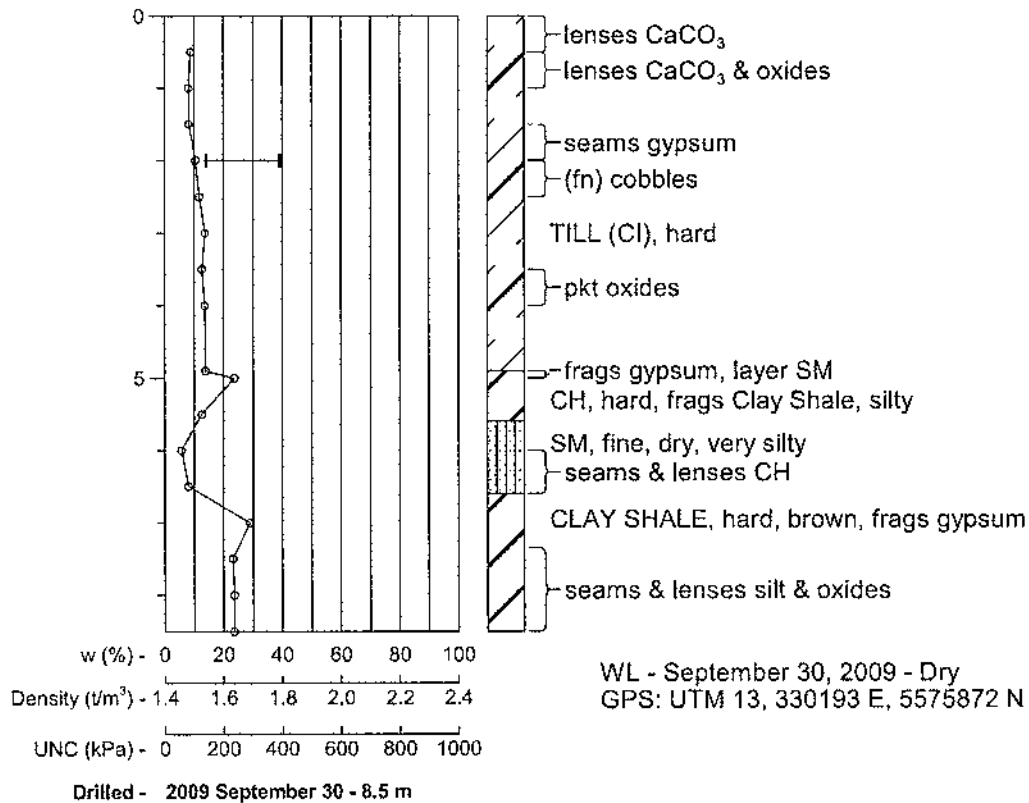
EL 731.689 m



 Agriculture and Agri-Food Canada Agriculture et Agroalimentaire Canada	<b>Highfield Dam</b> <b>NE 36-15-11 W3, Spillway Channel C/L, East Abutment</b>				<b>C52</b> 1 of 1
	Drawn/Checked: NB/KB/VK	2010/03/22	4547:928:7H4	358926	

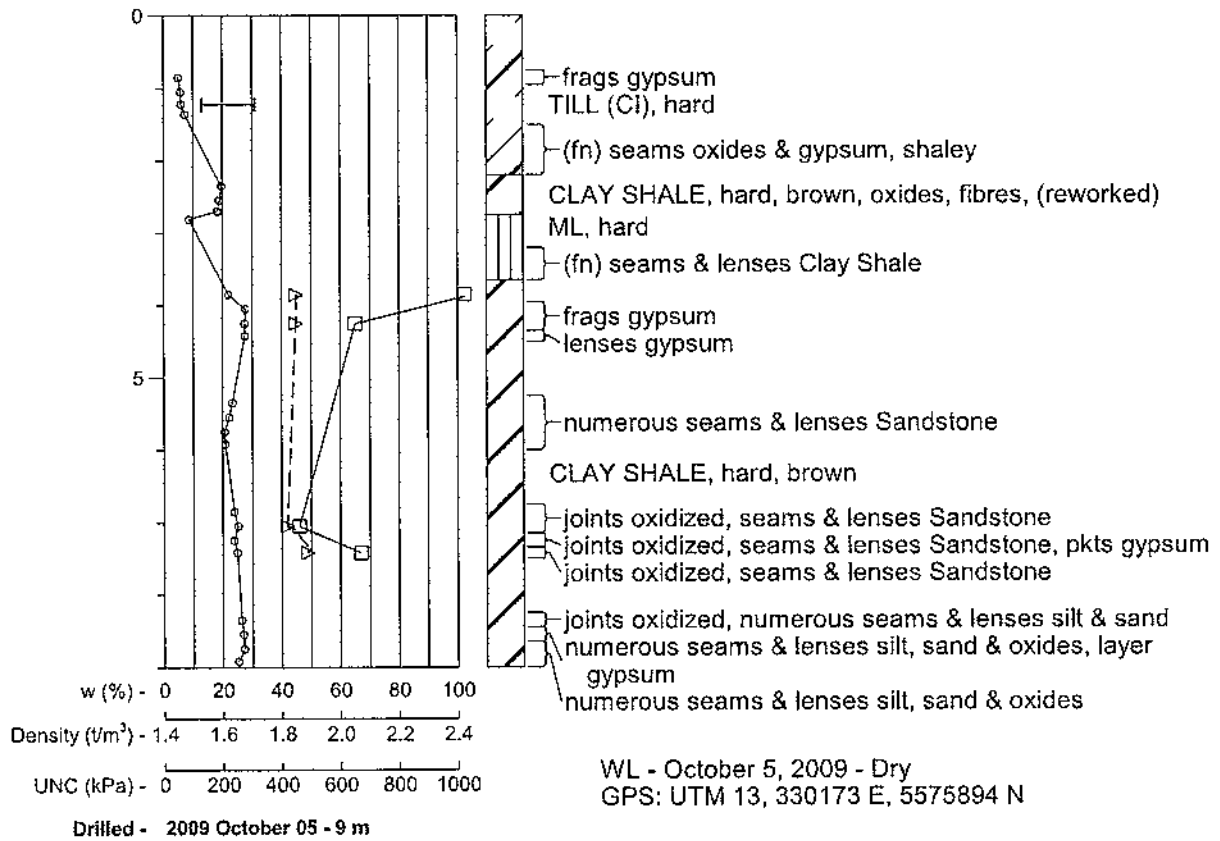
# C53

EL 727.792 m



# C54

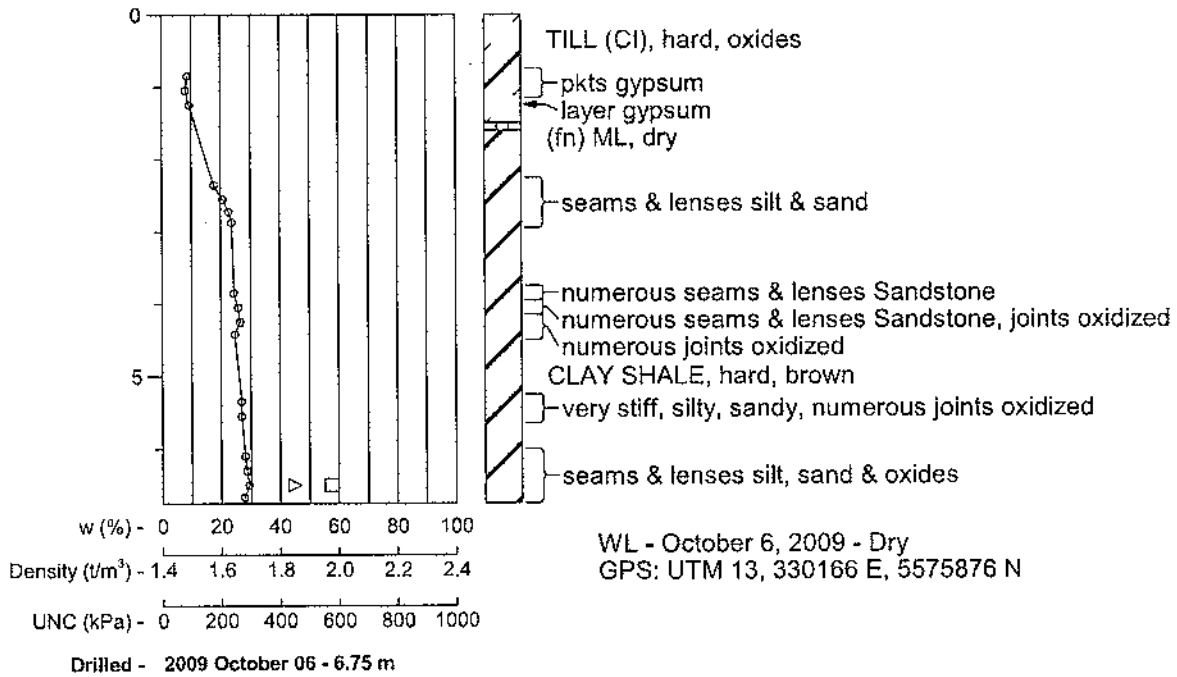
EL 725.260 m





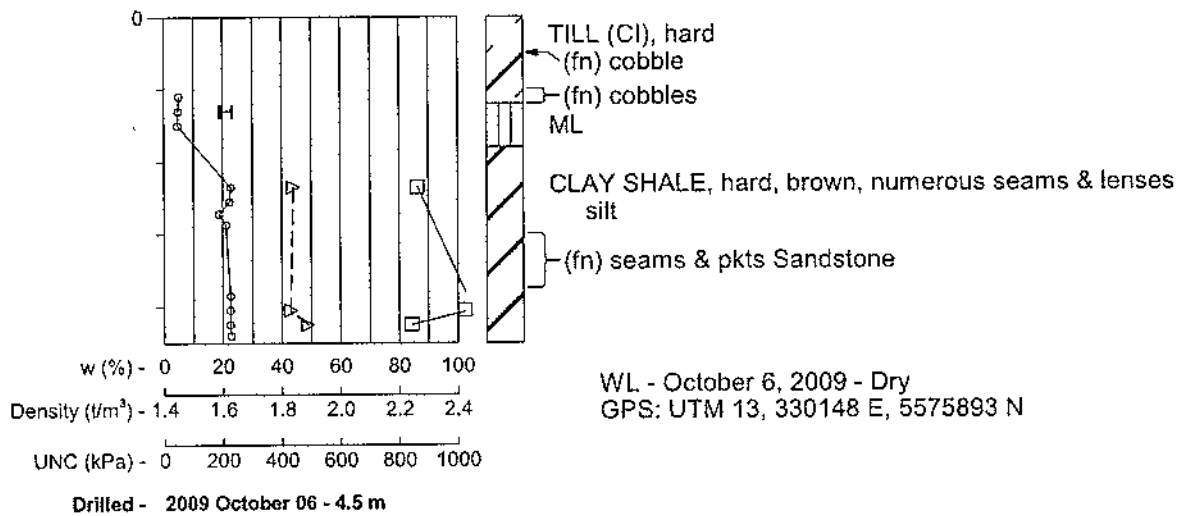
## C55

EL 724.092 m



## C56

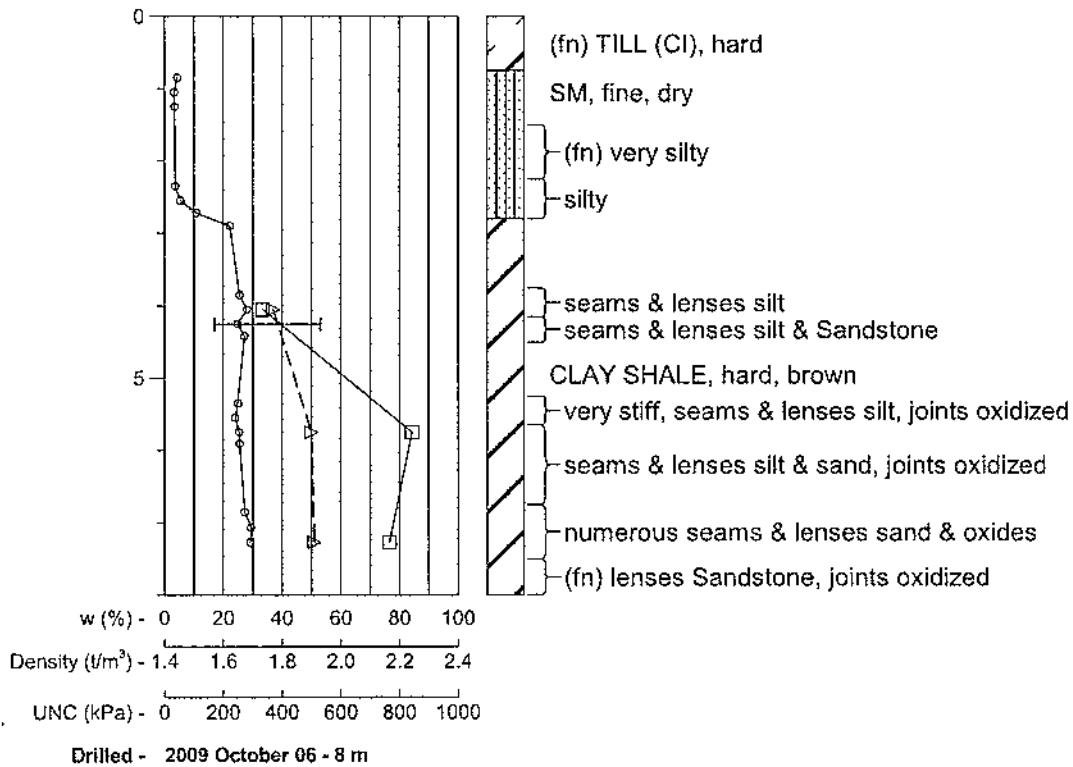
EL 722.533 m



	Agriculture and Agri-food Canada	<b>Highfield Dam</b> <b>NE 36-15-11 W3, Proposed Spillway Structure</b>		
	Drawn/Checked: NB/KB/VK	2010/03/09	4547:928:7H4	358929

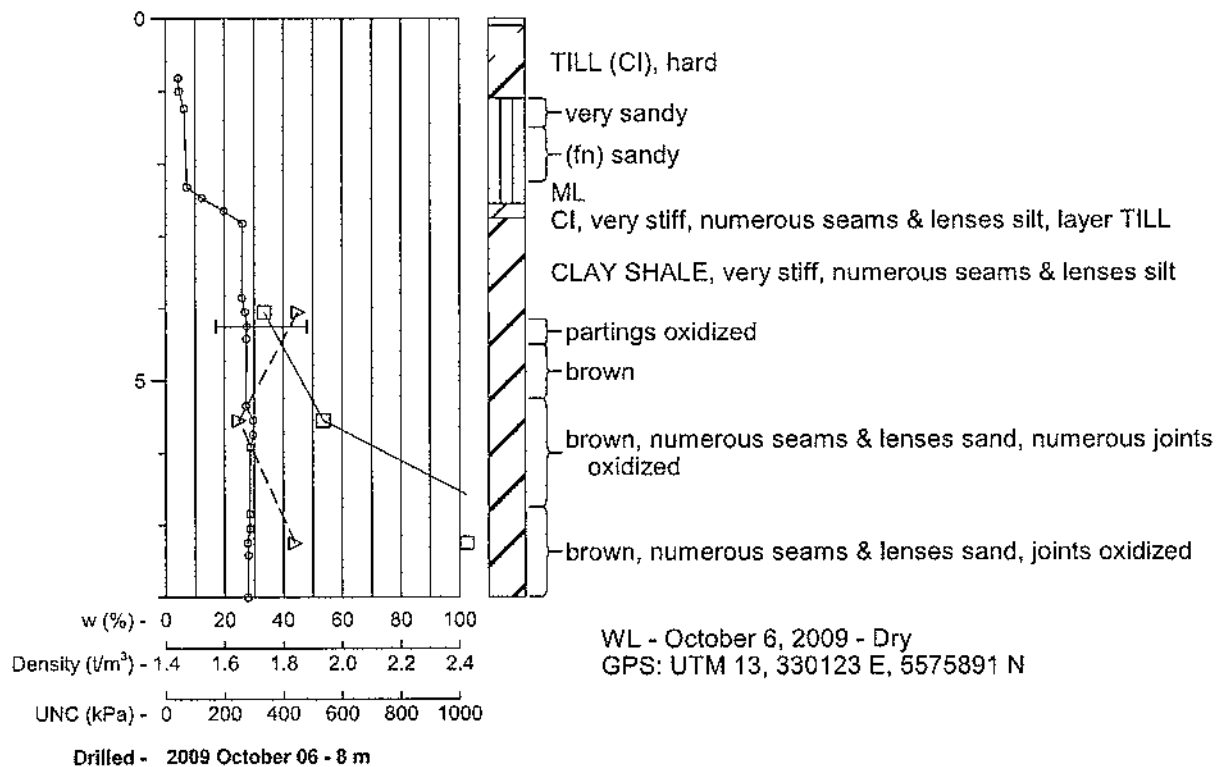
## C57

EL 721.463 m




## C58

EL 719.951 m

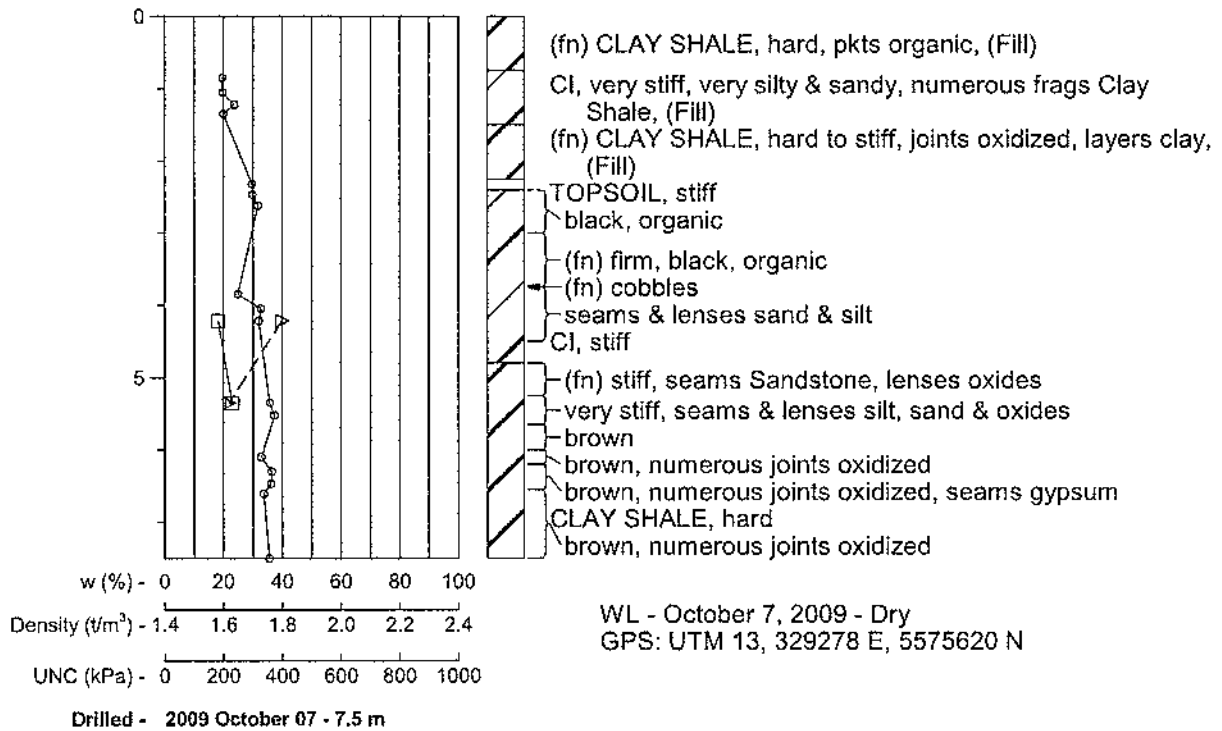


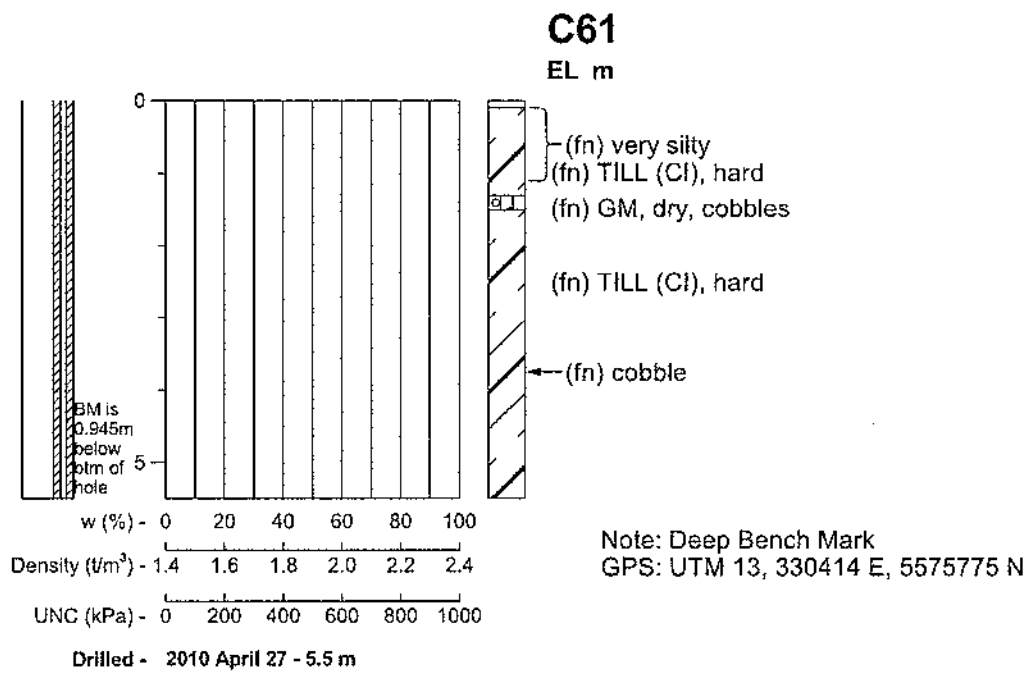
WL - October 6, 2009 - Dry  
GPS: UTM 13, 330123 E, 5575891 N

 Agriculture and Agri-Food Canada Agriculture et Agroalimentaire Canada		<b>Highfield Dam</b> <b>NE 36-15-11 W3, Proposed Spillway Structure C/L</b> Drawn/Checked: NB/KB/VK      2010/03/09      4547:928:7H4      358930			
---	--	---	--	--	--

# C59

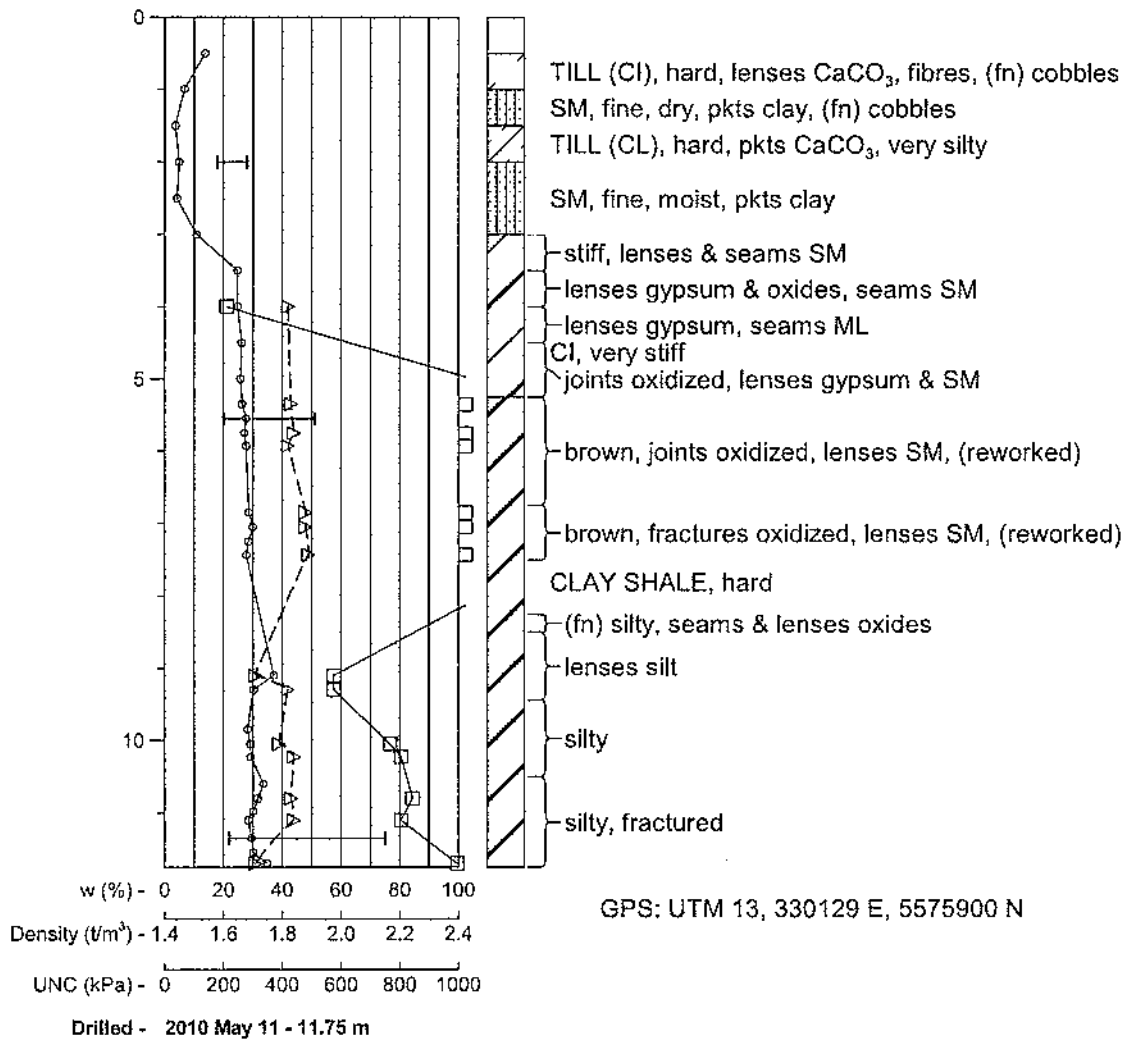
EL 721.672 m





# C62

EL m



# C63

EL m

