

RETURN BIDS TO:
RETOURNER LES SOUMISSIONS À:
Bid Receiving Public Works and Government
Services Canada/Réception des soumissions Travaux
publics et Services gouvernementaux Canada
800 Burrard Street, Room 219
800, rue Burrard, pièce 219
Vancouver
British Columbia
V6Z 0B9
Bid Fax: (604) 775-9381

SOLICITATION AMENDMENT
MODIFICATION DE L'INVITATION

The referenced document is hereby revised; unless otherwise
indicated, all other terms and conditions of the Solicitation
remain the same.

Ce document est par la présente révisé; sauf indication contraire,
les modalités de l'invitation demeurent les mêmes.

Comments - Commentaires

Vendor/Firm Name and Address
Raison sociale et adresse du
fournisseur/de l'entrepreneur

Issuing Office - Bureau de distribution
Public Works and Government Services Canada -
Pacific Region
800 Burrard Street, Room 219
800, rue Burrard, pièce 219
Vancouver
British C
V6Z 0B9

Title - Sujet Painting Two Bridges	
Solicitation No. - N° de l'invitation EZ899-152072/A	Amendment No. - N° modif. 002
Client Reference No. - N° de référence du client	Date 2015-02-24
GETS Reference No. - N° de référence de SEAG PW-\$PWY-022-7456	
File No. - N° de dossier PWY-4-37318 (022)	CCC No./N° CCC - FMS No./N° VME
Solicitation Closes - L'invitation prend fin at - à 02:00 PM on - le 2015-03-06	Time Zone Fuseau horaire Pacific Standard Time PST
F.O.B. - F.A.B. Plant-Usine: <input type="checkbox"/> Destination: <input checked="" type="checkbox"/> Other-Autre: <input type="checkbox"/>	
Address Enquiries to: - Adresser toutes questions à: Arthur (PWY), Carolyn	Buyer Id - Id de l'acheteur pwy022
Telephone No. - N° de téléphone (604) 775-6667 ()	FAX No. - N° de FAX (604) 775-6633
Destination - of Goods, Services, and Construction: Destination - des biens, services et construction: PWGSC - Jackfish Creek and Peterson Creek Bridges - Alaska Highway, BC	

Instructions: See Herein

Instructions: Voir aux présentes

Delivery Required - Livraison exigée	Delivery Offered - Livraison proposée
Vendor/Firm Name and Address Raison sociale et adresse du fournisseur/de l'entrepreneur	
Telephone No. - N° de téléphone Facsimile No. - N° de télécopieur	
Name and title of person authorized to sign on behalf of Vendor/Firm (type or print) Nom et titre de la personne autorisée à signer au nom du fournisseur/ de l'entrepreneur (taper ou écrire en caractères d'imprimerie)	
Signature	Date

Solicitation No. - N° de l'invitation

EZ899-152072/A

Client Ref. No. - N° de réf. du client

Amd. No. - N° de la modif.

002

File No. - N° du dossier

PWY-4-37318

Buyer ID - Id de l'acheteur

pw022

CCC No./N° CCC - FMS No/ N° VME

Amendment 002

Amendment 002 has been raised to provide Addendum 001 and drawings.

ALL OTHER TERMS AND CONDITIONS REMAIN UNCHANGED

**The following changes/clarifications in the tender documents are effective immediately.
This addendum will form part of the contract documents.**

Special Instructions to Bidders

Q1. There is a conflict between 01 5600 1.3 and 017419 1.12.3. Specifically, two levels of containment are specified. Can PWGSC please clarify which requirement applies on this project?

A1. Requirements in Specification Section 01 56 00 shall override the requirements in Specification Section 01 74 19 1.12.3

Q2. Can PWGSC please clarify the intention of Item 01 5100 1.5.2 – maintain temperature minimum of 20 degrees C in areas where construction is in progress?

A2. Delete 01 51 00 1.5.2

Q3. Related to material tests as called for in 01 4500 1.3, in order to determine potential costs and schedule impact as a result of the requirements of this section, we request that PWGSC provide what material testing would be required for – a) determining compliance with contract requirements and b) if defects are revealed after testing per a). As well, what equipment is expected to be provided per 1.3.6 and at what location and for what duration?

A3. The contractor is to develop a written, Project Specific Quality Control Program to be approved by the Departmental Representative and adhered to by the Contractor. The Quality Control Program is to be based on the references in Specification Section 09 97 79.1.1. The intention of the QC testing is to ensure the required life of the coating system is realized and should encompass surface preparation, steel temperature and environmental conditions, film thicknesses and operating techniques

Q4. Can not find the Form “Agreement to Provide 5 Year Warranty” in submitted documents.

A4. See page 3 of Specification Section 01 77 00

Q5. Are the other drawings available for the Peterson Bridge (2135- 12,13,14,16,17,18)?

A5. See attached

Q6. Is the contractor required to provide office space at site for owner’s representative?

a. Is contractor required to provide phone and internet service for the owners representative?

A6. The Contractor is NOT required to provide an office trailer for the use of Departmental Representative

Q7. Can the contractor pump water from the creek for washing?

A7. Yes. Pumping water from the two Creeks is allowed under permit obtained by PWGSC

Q8. Can there be an extension to the tendering period of 5 business days to accommodate sub-trade pricing?

A8. See Addendum 1. Tender extension has been granted.

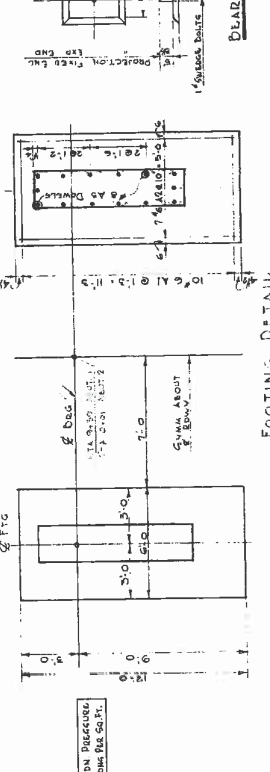
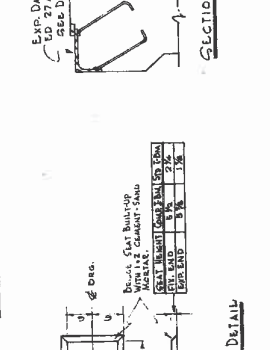
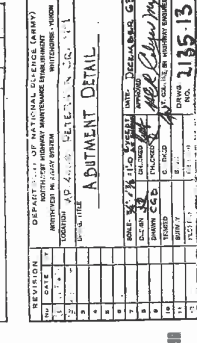
Q9. Are the specs for the deck drainage pipes of Peterson Creek for the bottom .5m of *exterior* only? Or does this include the interior?

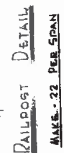
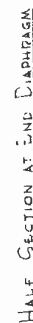
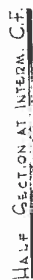
A10. Work under this Contract is related to exterior of the pipes only.

End of Addendum No.1

SUMMARY OF QUANTITIES		UNIT		DETACHED TO AG BUILD	
ITEM	COMMON	EMERGENCY	CY	BOB	
QUARRY STONES	CY	1.00			

DEPARTMENT OF NATIONAL DEFENSE (CONTRACT)		NORTHWESTERN UNIVERSITY, MINNEAPOLIS, MINN.		WHEELING, ILLINOIS	
UNCLASSIFIED		NO. 441R PER-ORDER, CO. N-1		DETACH	
ISSUE TITLE		STREAN, CONTINGENT, DAILY		DETACH	
1	1	1	1	1	1
2	2	2	2	2	2
3	3	3	3	3	3
4	4	4	4	4	4
5	5	5	5	5	5
6	6	6	6	6	6
7	7	7	7	7	7
8	8	8	8	8	8
9	9	9	9	9	9
10	10	10	10	10	10
11	11	11	11	11	11
12	12	12	12	12	12
13	13	13	13	13	13
14	14	14	14	14	14
15	15	15	15	15	15
16	16	16	16	16	16
17	17	17	17	17	17
18	18	18	18	18	18
19	19	19	19	19	19
20	20	20	20	20	20
21	21	21	21	21	21
22	22	22	22	22	22
23	23	23	23	23	23
24	24	24	24	24	24
25	25	25	25	25	25
26	26	26	26	26	26
27	27	27	27	27	27
28	28	28	28	28	28
29	29	29	29	29	29
30	30	30	30	30	30
31	31	31	31	31	31
32	32	32	32	32	32
33	33	33	33	33	33
34	34	34	34	34	34
35	35	35	35	35	35
36	36	36	36	36	36
37	37	37	37	37	37
38	38	38	38	38	38
39	39	39	39	39	39
40	40	40	40	40	40
41	41	41	41	41	41
42	42	42	42	42	42
43	43	43	43	43	43
44	44	44	44	44	44
45	45	45	45	45	45
46	46	46	46	46	46
47	47	47	47	47	47
48	48	48	48	48	48
49	49	49	49	49	49
50	50	50	50	50	50
51	51	51	51	51	51
52	52	52	52	52	52
53	53	53	53	53	53
54	54	54	54	54	54
55	55	55	55	55	55
56	56	56	56	56	56
57	57	57	57	57	57
58	58	58	58	58	58
59	59	59	59	59	59
60	60	60	60	60	60
61	61	61	61	61	61
62	62	62	62	62	62
63	63	63	63	63	63
64	64	64	64	64	64
65	65	65	65	65	65
66	66	66	66	66	66
67	67	67	67	67	67
68	68	68	68	68	68
69	69	69	69	69	69

[illegible]



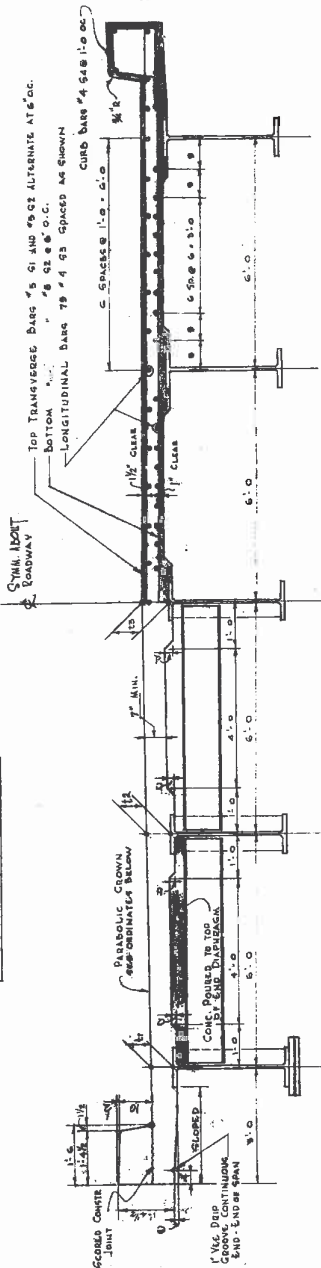
NSC

[illegible]

REVISED	DATE	BY	REASON
1	10/1/81	10/1/81	10/1/81
2	10/1/81	10/1/81	10/1/81
3	10/1/81	10/1/81	10/1/81
4	10/1/81	10/1/81	10/1/81
5	10/1/81	10/1/81	10/1/81
6	10/1/81	10/1/81	10/1/81
7	10/1/81	10/1/81	10/1/81
8	10/1/81	10/1/81	10/1/81
9	10/1/81	10/1/81	10/1/81
10	10/1/81	10/1/81	10/1/81
11	10/1/81	10/1/81	10/1/81
12	10/1/81	10/1/81	10/1/81

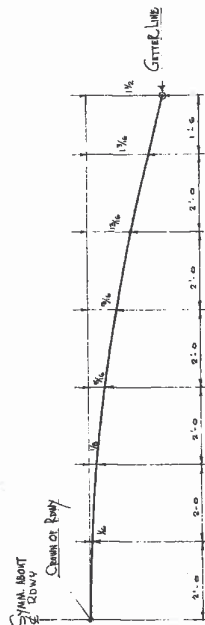
CALC. WEIGHT PER SPAN = 61.308 #

DIMENSION	1	2	3	4	5	6	7	8	9	10	11	12	13	14	15	16	17	18	19	20	21	22	23	24	25	26	27	28	29	30	31	32	33	34	35	36	37	38	39	40	41	42	43	44	45	46	47	48	49	50	51	52	53	54	55	56	57	58	59	60	61	62	63	64	65	66	67	68	69	70	71	72	73	74	75	76	77	78	79	80	81	82	83	84	85	86	87	88	89	90	91	92	93	94	95	96	97	98	99	100
CONCRETE	1	2	3	4	5	6	7	8	9	10	11	12	13	14	15	16	17	18	19	20	21	22	23	24	25	26	27	28	29	30	31	32	33	34	35	36	37	38	39	40	41	42	43	44	45	46	47	48	49	50	51	52	53	54	55	56	57	58	59	60	61	62	63	64	65	66	67	68	69	70	71	72	73	74	75	76	77	78	79	80	81	82	83	84	85	86	87	88	89	90	91	92	93	94	95	96	97	98	99	100

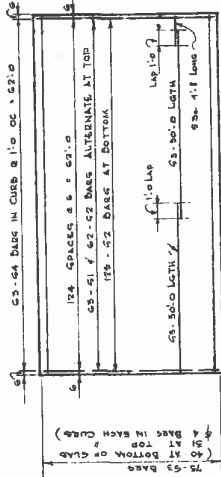


DIMENSION	1	2	3	4	5	6	7	8	9	10	11	12	13	14	15	16	17	18	19	20	21	22	23	24	25	26	27	28	29	30	31	32	33	34	35	36	37	38	39	40	41	42	43	44	45	46	47	48	49	50	51	52	53	54	55	56	57	58	59	60	61	62	63	64	65	66	67	68	69	70	71	72	73	74	75	76	77	78	79	80	81	82	83	84	85	86	87	88	89	90	91	92	93	94	95	96	97	98	99	100
CONCRETE	1	2	3	4	5	6	7	8	9	10	11	12	13	14	15	16	17	18	19	20	21	22	23	24	25	26	27	28	29	30	31	32	33	34	35	36	37	38	39	40	41	42	43	44	45	46	47	48	49	50	51	52	53	54	55	56	57	58	59	60	61	62	63	64	65	66	67	68	69	70	71	72	73	74	75	76	77	78	79	80	81	82	83	84	85	86	87	88	89	90	91	92	93	94	95	96	97	98	99	100

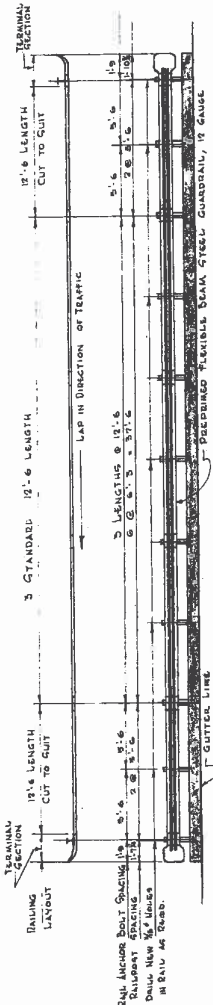
ROADWAY SECTION
SCALE 1/4" = 1'-0"



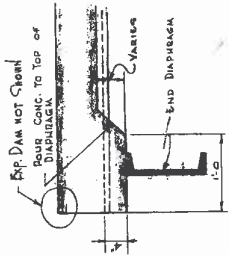
1 1/2 PARABOLIC CROWN ORDINATES
SCALE 1/4" = 1'-0"



REINFORCING LAYOUT
SCALE 1/4" = 1'-0"

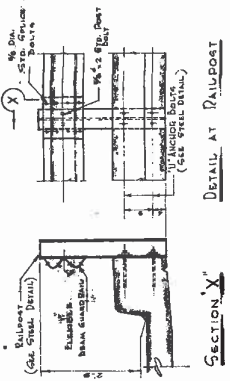


RAILING LAYOUT & POST SPACING
SCALE 1/4" = 1'-0"

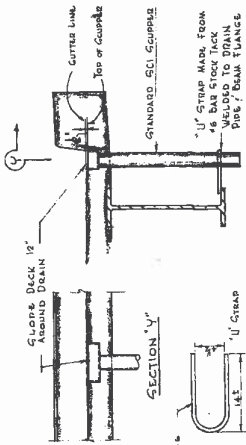


LONGIT SECTION AT END DIAPHRAGM
SCALE 1/4" = 1'-0"

AS BUILT
REVISED: NOV. 25/84



DETAIL AT RAILPORT
SCALE 1/4" = 1'-0"

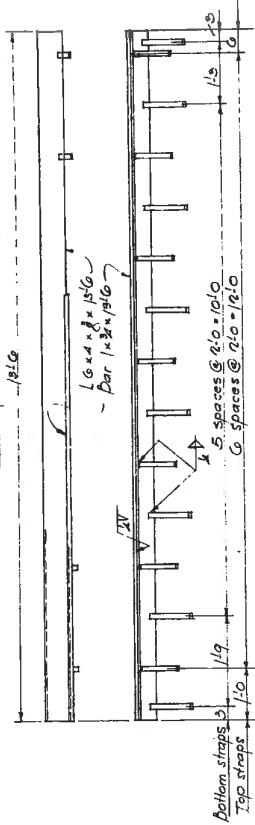
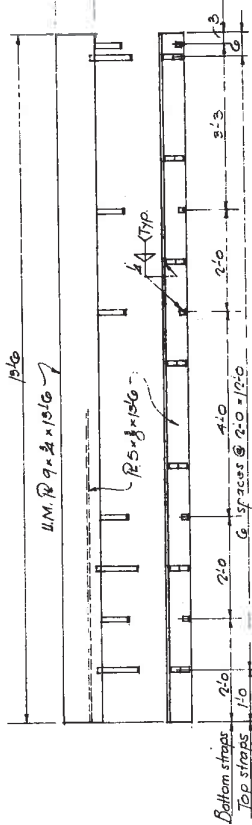
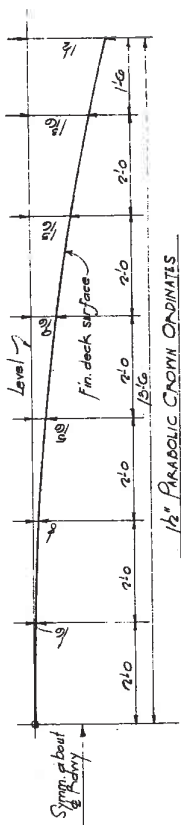


DETAIL AT DRAIN SCUPPER
SCALE 1/4" = 1'-0"

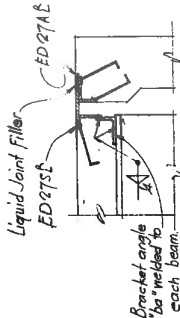
REFERENCE	DRAWINGS
STRUCTURAL STEEL	2135-14/2135-12
STEEL SCHEDULE	2135-12

ESTIMATED QUANTITIES	A	B
CONCRETE CLASS Y (41)	48000	1.7
REINFORCING STEEL	107200	11.2
FLY-BEAM GR STD. LENGTHS 12'-6"	10	1.0
TERMINAL SECTIONS	2	2
SCUPPERS & CI	4(2800)	4(2800)

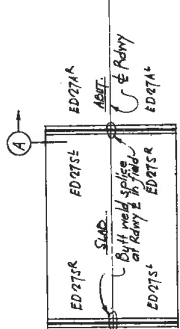
REVISION	DATE	BY	DESCRIPTION
1			APPROVED FOR CONSTRUCTION
2			APPROVED FOR CONSTRUCTION
3			APPROVED FOR CONSTRUCTION
4			APPROVED FOR CONSTRUCTION
5			APPROVED FOR CONSTRUCTION
6			APPROVED FOR CONSTRUCTION
7			APPROVED FOR CONSTRUCTION
8			APPROVED FOR CONSTRUCTION
9			APPROVED FOR CONSTRUCTION
10			APPROVED FOR CONSTRUCTION
11			APPROVED FOR CONSTRUCTION
12			APPROVED FOR CONSTRUCTION
13			APPROVED FOR CONSTRUCTION
14			APPROVED FOR CONSTRUCTION
15			APPROVED FOR CONSTRUCTION
16			APPROVED FOR CONSTRUCTION
17			APPROVED FOR CONSTRUCTION
18			APPROVED FOR CONSTRUCTION
19			APPROVED FOR CONSTRUCTION
20			APPROVED FOR CONSTRUCTION
21			APPROVED FOR CONSTRUCTION
22			APPROVED FOR CONSTRUCTION
23			APPROVED FOR CONSTRUCTION
24			APPROVED FOR CONSTRUCTION
25			APPROVED FOR CONSTRUCTION
26			APPROVED FOR CONSTRUCTION
27			APPROVED FOR CONSTRUCTION
28			APPROVED FOR CONSTRUCTION
29			APPROVED FOR CONSTRUCTION
30			APPROVED FOR CONSTRUCTION
31			APPROVED FOR CONSTRUCTION
32			APPROVED FOR CONSTRUCTION
33			APPROVED FOR CONSTRUCTION
34			APPROVED FOR CONSTRUCTION
35			APPROVED FOR CONSTRUCTION
36			APPROVED FOR CONSTRUCTION
37			APPROVED FOR CONSTRUCTION
38			APPROVED FOR CONSTRUCTION
39			APPROVED FOR CONSTRUCTION
40			APPROVED FOR CONSTRUCTION
41			APPROVED FOR CONSTRUCTION
42			APPROVED FOR CONSTRUCTION
43			APPROVED FOR CONSTRUCTION
44			APPROVED FOR CONSTRUCTION
45			APPROVED FOR CONSTRUCTION
46			APPROVED FOR CONSTRUCTION
47			APPROVED FOR CONSTRUCTION
48			APPROVED FOR CONSTRUCTION
49			APPROVED FOR CONSTRUCTION
50			APPROVED FOR CONSTRUCTION
51			APPROVED FOR CONSTRUCTION
52			APPROVED FOR CONSTRUCTION
53			APPROVED FOR CONSTRUCTION
54			APPROVED FOR CONSTRUCTION
55			APPROVED FOR CONSTRUCTION
56			APPROVED FOR CONSTRUCTION
57			APPROVED FOR CONSTRUCTION
58			APPROVED FOR CONSTRUCTION
59			APPROVED FOR CONSTRUCTION
60			APPROVED FOR CONSTRUCTION
61			APPROVED FOR CONSTRUCTION
62			APPROVED FOR CONSTRUCTION
63			APPROVED FOR CONSTRUCTION
64			APPROVED FOR CONSTRUCTION
65			APPROVED FOR CONSTRUCTION
66			APPROVED FOR CONSTRUCTION
67			APPROVED FOR CONSTRUCTION
68			APPROVED FOR CONSTRUCTION
69			APPROVED FOR CONSTRUCTION
70			APPROVED FOR CONSTRUCTION
71			APPROVED FOR CONSTRUCTION
72			APPROVED FOR CONSTRUCTION
73			APPROVED FOR CONSTRUCTION
74			APPROVED FOR CONSTRUCTION
75			APPROVED FOR CONSTRUCTION
76			APPROVED FOR CONSTRUCTION
77			APPROVED FOR CONSTRUCTION
78			APPROVED FOR CONSTRUCTION
79			APPROVED FOR CONSTRUCTION
80			APPROVED FOR CONSTRUCTION
81			APPROVED FOR CONSTRUCTION
82			APPROVED FOR CONSTRUCTION
83			APPROVED FOR CONSTRUCTION
84			APPROVED FOR CONSTRUCTION
85			APPROVED FOR CONSTRUCTION
86			APPROVED FOR CONSTRUCTION
87			APPROVED FOR CONSTRUCTION
88			APPROVED FOR CONSTRUCTION
89			APPROVED FOR CONSTRUCTION
90			APPROVED FOR CONSTRUCTION
91			APPROVED FOR CONSTRUCTION
92			APPROVED FOR CONSTRUCTION
93			APPROVED FOR CONSTRUCTION
94			APPROVED FOR CONSTRUCTION
95			APPROVED FOR CONSTRUCTION
96			APPROVED FOR CONSTRUCTION
97			APPROVED FOR CONSTRUCTION
98			APPROVED FOR CONSTRUCTION
99			APPROVED FOR CONSTRUCTION
100			APPROVED FOR CONSTRUCTION



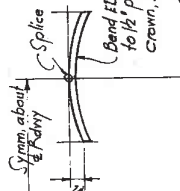
ED 271A - Make 2 as shown
ED 271B - Make 2 opp hand



EXP. JOINT AT ABUT



EXP. DAM LAYOUT



TYPICAL SECTION (A)

Material: ASTM A36 current ed.
Paint: Surfaces in contact with concrete - no paint, otherwise one shop coat of red lead-iron oxide paint (16PM)

Item	Calc. Mtl. Req'd.	Total Mtl.
ED 271A	267.48	1537.6
ED 271B	20.24	865.6
1" Bar	8.24	52.4
TOTAL		2555.6

REVISION	DATE	BY	CHKD.	APP'D.
1				
2				
3				
4				
5				
6				
7				
8				
9				
10				
11				
12				
13				
14				
15				
16				
17				
18				
19				
20				
21				
22				
23				
24				
25				
26				
27				
28				
29				
30				
31				
32				
33				
34				
35				
36				
37				
38				
39				
40				
41				
42				
43				
44				
45				
46				
47				
48				
49				
50				
51				
52				
53				
54				
55				
56				
57				
58				
59				
60				
61				
62				
63				
64				
65				
66				
67				
68				
69				
70				
71				
72				
73				
74				
75				
76				
77				
78				
79				
80				
81				
82				
83				
84				
85				
86				
87				
88				
89				
90				
91				
92				
93				
94				
95				
96				
97				
98				
99				
100				

REINFORCING STEEL CUTTING & BENDING SCHEDULE

STRAIGHT BARS

Size	Length	No.	Mark
#6	11'-6"	14	A2
#6	3'-4"	28	A3
#8	8'-7"	4	A5
#8	5'-0"	4	A6
#8	15'-0"	6	A7
#9	6'-6"	12	A11
#9	35'-8"	2	A12
#4	5'-0"	35	A13
#4	12'-4"	12	A15
#6	29'-6"	2	A16
#4	4'-6"	4	A18
#4	6'-1"	4	A19
#4	6'-8"	8	A20
#4	5'-8"	4	A21
#4	4'-11"	8	A22
#4	5'-0"	4	A24
#4	7'-0"	8	A25
#4	6'-4"	4	A26
#4	5'-9"	4	A27
#4	5'-1"	4	A28
#4	4'-2"	12	EP2
#4	2'-8"	8	EP6

TOTALS #4 BARS 5480' = 3661' #
#5 29'-8 63 54 54 54
#4 5'-0 126 54 54
#5 28'-0 187 52
#4 30'-0 150 53
#4 4'-8 75 534
#5 4'-8 75 534

TOTAL FOR ONE DECK 11,072'

BENT BARS

Size	Length	No.	Mark	Type
#6	17'-10"	2	A8-1	A
#6	16'-7"	2	A2	
#6	15'-4"	2	A3	
#6	14'-1"	2	A4	
#6	12'-10"	2	A5	
#6	11'-4"	2	A6	
#6	10'-4"	2	A7	
#6	9'-1"	2	A11	
#6	12'-11"	2	A10	
#6	12'-0"	4	A17	B
#6	7'-3"	4	A23	C
#6	2'-6"	0	A29	D
#4	3'-8"	4	EP1	
#4	5'-0"	6	EP3	
#4	4'-8"	8	EP4	
#4	4'-3"	4	EP5	

TOTAL FOR ONE ABUTMENT 11,072'

ABUTMENT REINFORCEMENT
(QUANTITIES SHOWN FOR ONE ABUTMENT ONLY - MAKE 2 SETS)

DECK REINFORCEMENT

TOTALS #4 BARS 5480' = 3661' #
#5 29'-8 63 54 54 54
#4 5'-0 126 54 54
#5 28'-0 187 52
#4 30'-0 150 53
#4 4'-8 75 534
#5 4'-8 75 534

TOTAL FOR ONE DECK 11,072'

DECK & ABUTMENT REINFORCEMENT STEEL SCHEDULE

Project: _____
Inspector: _____
Date: _____
Prepared by: _____
Checked by: _____
215-18
215-18
215-18

Notes:
1. Material: Dile steel, intermediate grade.
2. Shop bent bars in accordance with CSA G30.1 & G30.2. Shop bent bars that be bundled by Mark, each bundle tagged to indicate Mark, Total No., and Name of Project.
3. Dimensions are out to out of bar unless otherwise indicated.

BENDING DETAIL

STANDARD HOOK DETAIL

G = Length of bar to be added to out-out dimension to make hook

Hook	Hook	Hook	Hook	Hook	Hook	Hook	Hook	Hook	Hook
11	11.7	10	10.3	11	11.7	10	10.3	11	11.7
10	11.5	9	11.4	10	11.5	9	11.4	10	11.5
9	11.3	8	11.2	9	11.3	8	11.2	9	11.3
8	11.1	7	11.0	8	11.1	7	11.0	8	11.1
7	10.9	6	10.8	7	10.9	6	10.8	7	10.9
6	10.7	5	10.6	6	10.7	5	10.6	6	10.7
5	10.5	4	10.4	5	10.5	4	10.4	5	10.5
4	10.3	3	10.2	4	10.3	3	10.2	4	10.3
3	10.1	2	10.0	3	10.1	2	10.0	3	10.1
2	9.9	1	9.8	2	9.9	1	9.8	2	9.9
1	9.7	0	9.6	1	9.7	0	9.6	1	9.7

DECK & ABUTMENT REINFORCEMENT STEEL SCHEDULE

Project: _____
Inspector: _____
Date: _____
Prepared by: _____
Checked by: _____
215-18
215-18
215-18