

| | | | | | | |
|---|---|--|---|-------------------------------|-------|----------|
| Client CANADA BORDER SERVICES AGENCY 427 Laurier Avenue West, 10th Floor Ottawa, Ontario, K1A 0L8 | Project title EXPANSION OF CBSA INSPECTION INFRASTRUCTURE AT EMERSON MB | Drawing title SITE PLAN EXISTING | PRELIMINARY NOT FOR CONSTRUCTION | | | |
| | | | PWGSC Project Manager JAMES HUTCHINGS | | | |
| | | | Project no. R.068431.003 | | | |
| | | | Approved by | Date APRIL 16, 2014 | Sheet | Revision |



Government Road Allowance (Undeveloped)

CANADA

Boundary Ave.

Government Road Allowance (Undeveloped)

U.S.A

BOUNDARY AVENUE IS UNDER MANITOBA CONTROL
BUT A LETTER OF AUTHORIZATION FROM
THE INTERNATIONAL BOUNDARY COMMISSION IS
REQUIRED TO PERFORM ANY TYPE OF WORK OR
ADDITION TO WORKS WITHIN 10 FT. OF THE BOUNDARY.



LEGEND

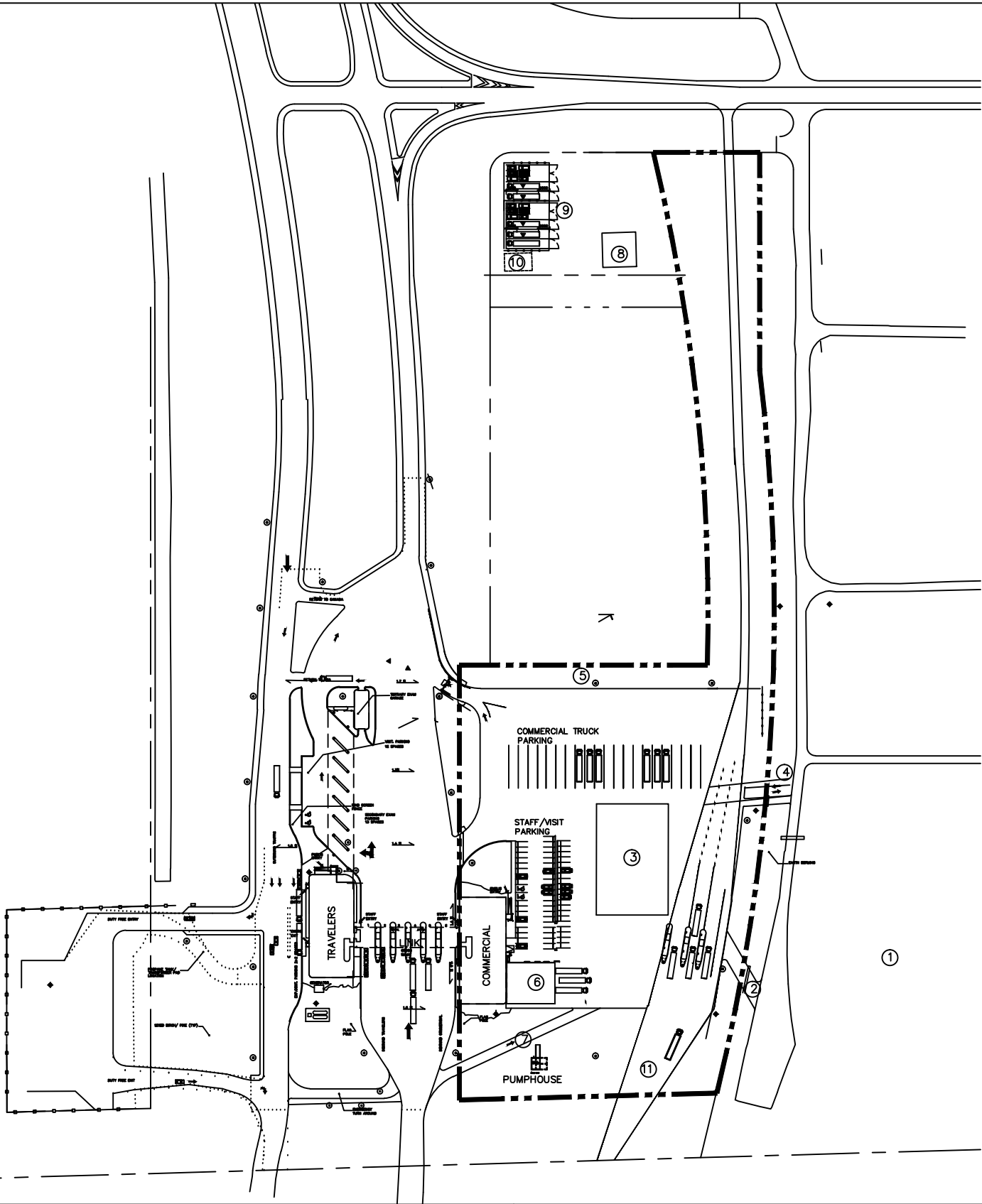
HMQ CANADA - HER MAJESTY THE QUEEN, CANADA
HMQ MANITOBA - HER MAJESTY THE QUEEN, MANITOBA
CT - CERTIFICATE OF TITLE

MANITOBA INFRASTRUCTURE and TRANSPORTATION

**PEMBINA - EMERSON
PORT OF ENTRY
SHOWING
PLAN OF OWNERSHIP**

DECEMBER 2013





- ① 5m WIDE BYPASS LANE FOR OVERHEIGHT AND/OR OVERWIDTH VEHICLES (MAY NOT BE REQUIRED IF OUTSIDE PIL BOOTH DOES NOT HAVE A CANOPY OVERHANG)
- ② CLOSE EXISTING STAFF ENTRANCE
- ③ 33.53M X 51.82M RADIATION SAFETY ZONE FOR MOBILE LARGE SCALE IMAGING (M–LSI)
- ④ NEW STAFF VEHICLE ENTRANCE
- ⑤ EXISTING DRAINAGE DITCH
- ⑥ PROPOSED ADDITION TO COMMERCIAL BLDG.
- ⑦ MODIFY EXISTING BYPASS LANE (TO BE USED ON A TEMPORARY BASIS ONLY) WHEN NEW COMMERCIAL BYPASS LANES ARE IN OPERATION .
- ⑧ PWGSC MAINTENANCE GARAGE (RELOCATED)
- ⑨ SEIZED VEHICLE COMPOUND (RELOCATED)
- ⑩ VACIS STORAGE BLDG (RELOCATED)
- ⑪ HATCHED AREA DENOTES AREA OF POSSIBLE LOCATION OF 3 NEW INBOUND COMMERCIAL BY–PASS LANES

| | | | |
|--|--|--|----------|
| PRELIMINARY NOT FOR CONSTRUCTION | | | |
| Drawn by J.H. | | PWGSC Project Manager JAMES HUTCHINGS | |
| Designed by J.H. | | Project no. R.068431.003 | |
| Approved by | | Date DEC. 2014 | Revision |

Client

CANADA BORDER SERVICES AGENCY
427 Laurier Avenue West, 10th Floor
Ottawa, Ontario, K1A 0L8

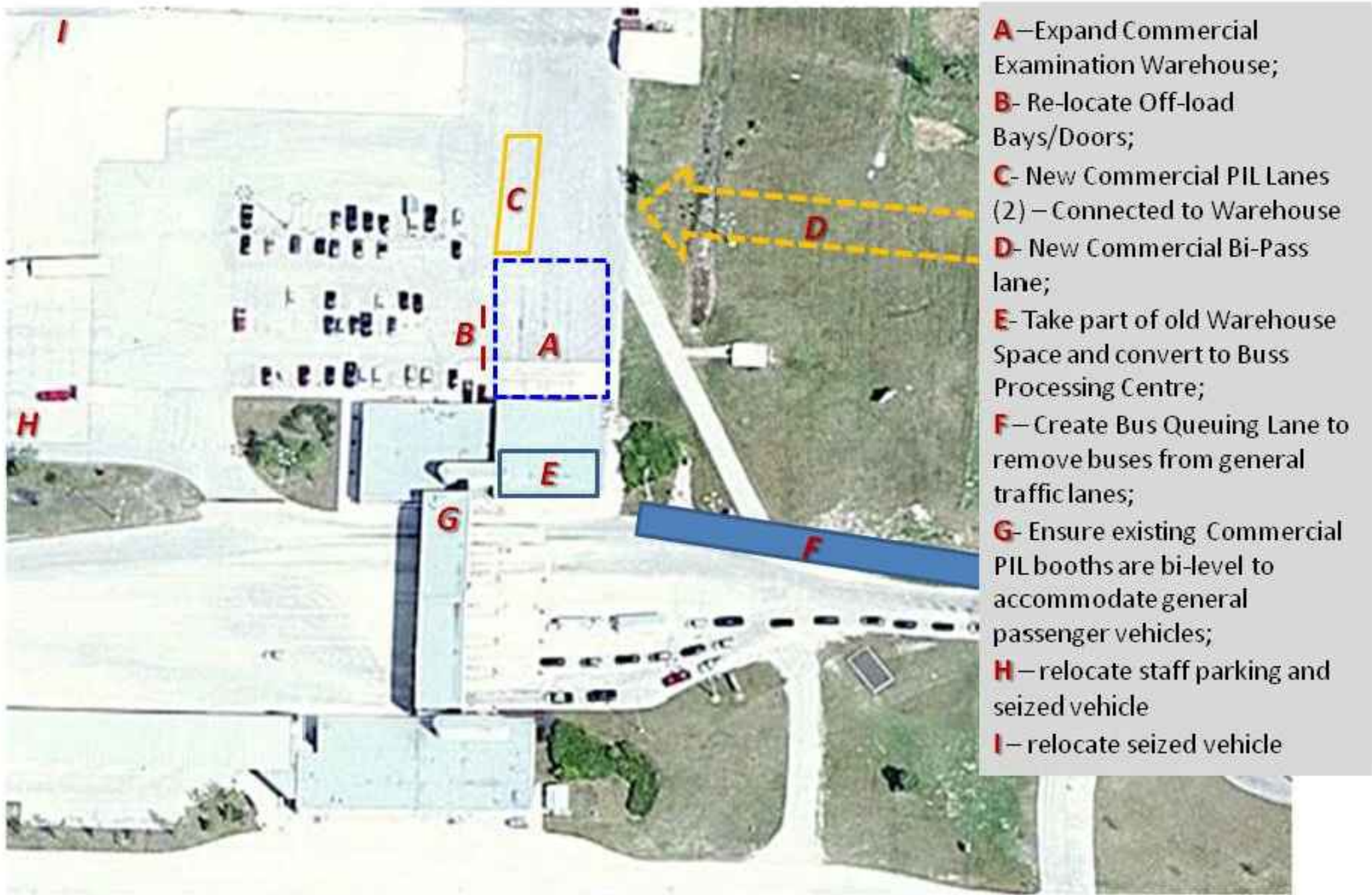
Project title

**EXPANSION OF CBSA INSPECTION
INFRASTRUCTURE AT EMERSON MB**

Drawing title

**SITE PLAN
REVISED OPTION - DEC 2014**

Emerson POE – BtB Concept Option (district design)

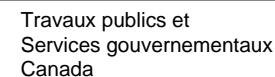


PRELIMINARY
NOT FOR CONSTRUCTION

| | | | | | | | | |
|---|---|--|------------------------------------|--|--|---|-------|----------|
| Client CANADA BORDER SERVICES AGENCY 427 Laurier Avenue West, 10th Floor Ottawa, Ontario, K1A 0L8 | Project title EXPANSION OF CBSA INSPECTION INFRASTRUCTURE AT EMERSON MB | Drawing title CONCEPT OPTION REGION DESIGN | Drawn by JAMES HUTCHINGS | | | PWGSC Project Manager JAMES HUTCHINGS | | |
| | | | Designed by | | | Project no. R.068431.003 | | |
| | | | Approved by | | | Date JUNE 2014 | Sheet | Revision |



| | | | | | | | | |
|---|---|-------------------------------------|------------------------------------|--|--|---|-------|----------|
| Client CANADA BORDER SERVICES AGENCY 427 Laurier Avenue West, 10th Floor Ottawa, Ontario, K1A 0L8 | Project title EXPANSION OF CBSA INSPECTION INFRASTRUCTURE AT EMERSON MB | Drawing title AERIAL VIEW | Drawn by JAMES HUTCHINGS | | | PWGSC Project Manager JAMES HUTCHINGS | | |
| | | | Designed by | | | Project no. R.068431.003 | | |
| | | | Approved by | | | Date JUNE 2014 | Sheet | Revision |
| | | | | | | | | |



Services Immobiliers
Région de l'ouest

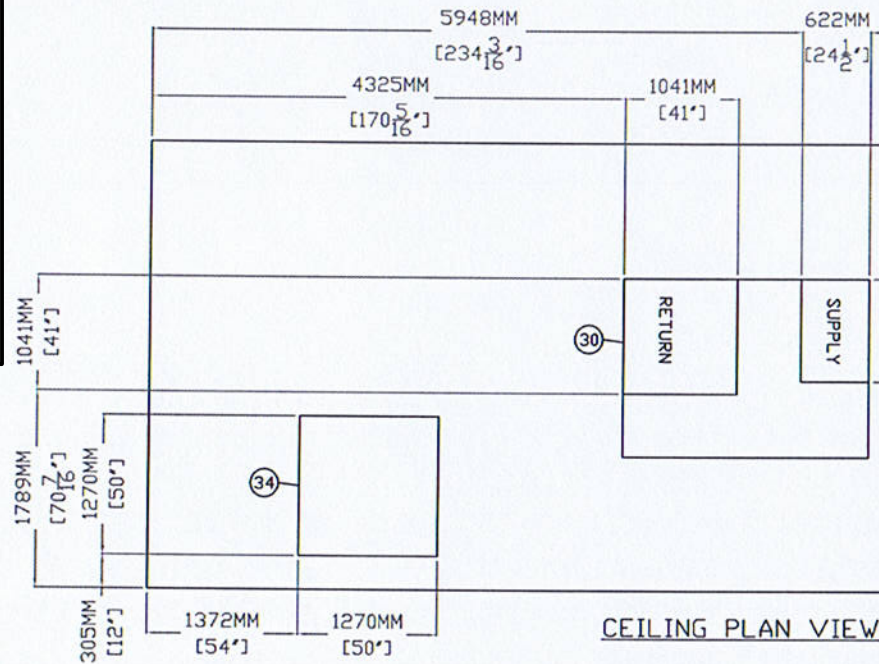


CANADA BORDER SERVICES AGENCY
427 Laurier Avenue West, 10th Floor
Ottawa, Ontario, K1A 0L8

EXPANSION OF CBSA INSPECTION INFRASTRUCTURE AT EMERSON MB

EXTEND OF FLOODING

| | | |
|------------------|-------|----------|
| Date | Sheet | Revision |
| JUNE 2014 | | |



CEILING PLAN VIEW

INTERIOR CEILING LINE

REVIEWED
REVIEWED AS NOTED
REVISE AND RESUBMIT

Shop drawing review is only for the limited purpose of checking for conformance with information given and the design concept expressed in the Contract Documents. Review of such submittals is not conducted for the purpose of determining the accuracy and completeness of the shop drawings submitted or other details, such as dimensions and quantities, or for substantiating instructions for installation or performance of equipment or systems, all of which remain the responsibility of the Contractor, as required by the Contract documents. The Architect's review of the Contractor's submittals shall not relieve the Contractor of his obligations. The Architect's review shall not constitute approval of safety precautions or, unless otherwise specifically stated by the Architect, of any construction means, methods, techniques, sequences or procedures. The Architect's review of a specific item shall not indicate review or approval of an assembly of which the item is a component.

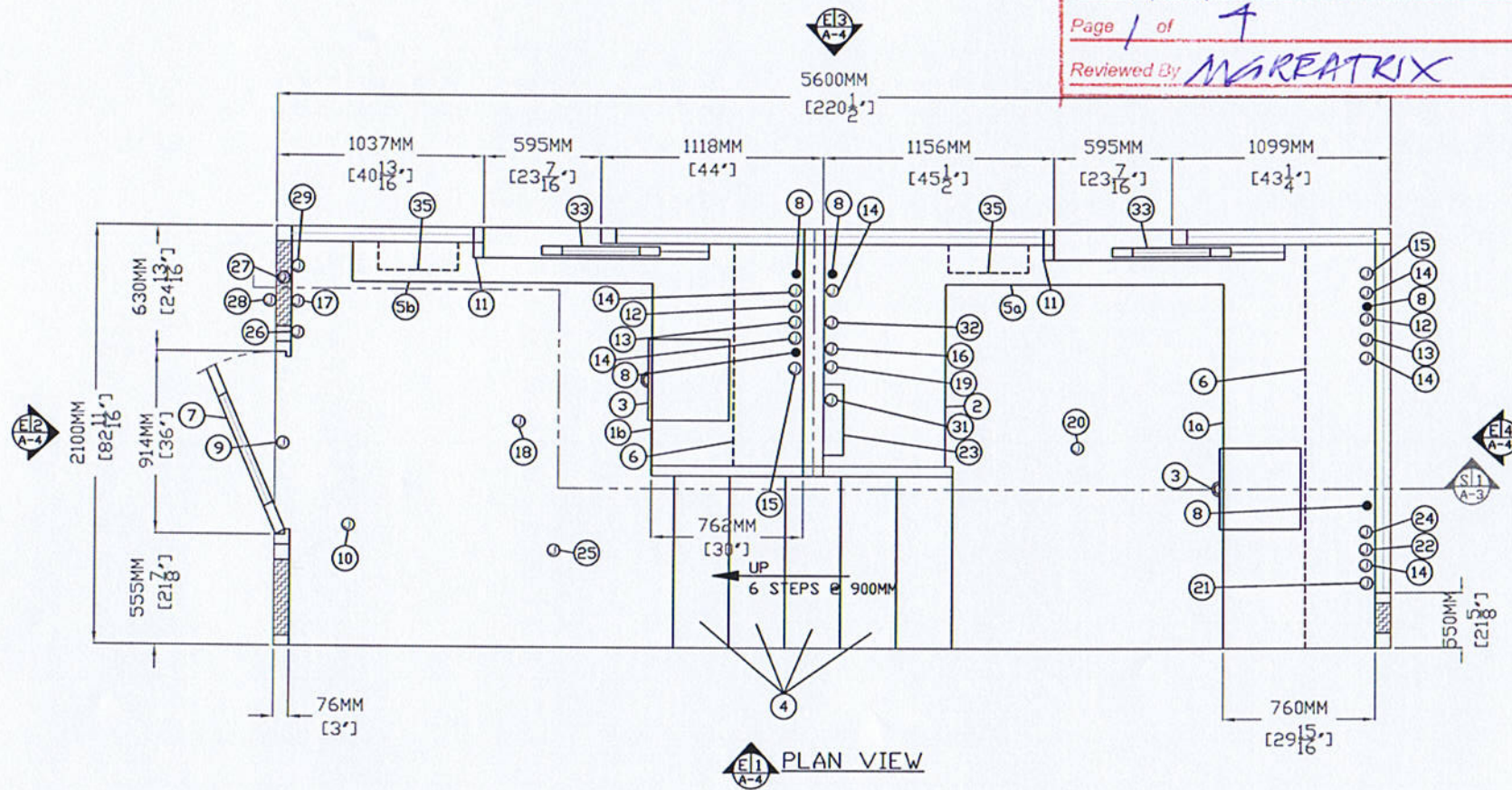
The architectural component of shop drawings are only confirmed reviewed, upon the receipt of complete approvals from the General Contractor (GC). The GC confirmed review assumes that the work shown within the shop drawing is what was specified/drawn on the Contract Documents and that full consideration by the GC for integration has taken place, prior to submission to the architect.

Verne Reimer Architecture Incorporated

Date 14 APR 2012

Page 1 of 4

Reviewed By WIREATRIX



PLAN VIEW

1. COUNTER, 2-REQ'D, 760MM DEEP 304-2B STAINLESS STEEL - a) (1) MOUNTED 905MM A.F.F., b) (1) MOUNTED 967MM A.F.F. WITH 4" HIGH BACK SPLASH.
2. COUNTER - 610MM DEEP 304-2B STAINLESS STEEL MOUNTED 905MM A.F.F.
3. 4"H X 16"D X 16"W PLASTIC LAMINATE STORAGE DRAWER, 2-REQ'D, MOUNTED BENEATH COUNTER.
4. STAIRS.
5. SHELF, 2-REQ'D - 200MM (7 7/8") DEEP STAINLESS STEEL a) (1) MOUNTED 905MM A.F.F., b) (1) MOUNTED 967MM A.F.F.
6. SHELF, 2-REQ'D - 350MM DEEP PLASTIC LAMINATE MOUNTED 500MM A.F.F.
7. DOOR - 915MM WIDE X 2134MM HIGH SWINGING STEEL, WITH WEATHER-STRIPPING, BALL BEARING BUTTS, SAFETY GLAZING, HYDRAULIC CLOSER, PANIC EXIT DEVICE WITH CYLINDER/PULL EXTERIOR TRIM, ELECTRIC STRIKE, AND HARDWARE.
8. HOLE IN COUNTER FOR DROP CORDS, 5-REQ'D.
9. 2" X 4" JUNCTION BOX IN TOP OF DOOR FRAME WITH 1/2" RACEWAY TO ITEM #10. SEE D-1 ON SHEET A-3.
10. PREPARATION FOR FUTURE CARD READER, PROVIDED AND INSTALLED BY OTHERS ON SITE. PAR-KUT TO PROVIDE A SINGLE GANG JUNCTION BOX MOUNTED 48" ABOVE GRADE IN THE EXTERIOR WALL PANEL WITH 1/2" RACEWAY TO 4" X 4" JUNCTION BOX IN CEILING NEAR DOOR. PAR-KUT TO INCLUDE ELECTRIC STRIKE AND ALL CONDUIT RACEWAYS. REFER TO D-1 ON SHEET A-3 FOR ADDITIONAL RACEWAYS BY PAR-KUT. COMPLETE WITH 1/2" RACEWAY TO CIRCUIT BREAKER PANEL.
11. 1/2" RACEWAY, 2-REQ'D, FROM JUNCTION BOX ITEM #24 (ALARM) TERMINATING 3-4" ABOVE SHELF.
12. 2" X 4" JUNCTION BOX, 2-REQ'D, MOUNTED BELOW COUNTER WITH 3/4" RACEWAY TO JUNCTION BOX ITEM #22. (COMMUNICATION)
13. 2" X 4" JUNCTION BOX, 2-REQ'D, MOUNTED BELOW COUNTER WITH 3/4" RACEWAY TO JUNCTION BOX ITEM #22. (COMMUNICATION)
14. 2" X 4" JUNCTION BOX, 6-REQ'D, MOUNTED 450MM ABOVE GRADE WITH 1/2" RACEWAY TO ITEM #23 FOR CUSTOMER DUPLEX RECEPTACLES.
15. 2" X 4" JUNCTION BOX, 2-REQ'D, MOUNTED BELOW COUNTER WITH 1/2" RACEWAY TO ITEM #21. (TELEPHONE)
16. 2" X 4" JUNCTION BOX MOUNTED IN WALL AT 1000MM (39") ABOVE FLOOR WITH 1/2" RACEWAY TO ITEM #23 AND 3/4" RACEWAY STUBBED ABOVE ROOF. (INDICATOR LIGHTS)
17. 2" X 4" JUNCTION BOX MOUNTED IN WALL AT 1000MM (39") ABOVE FLOOR WITH 1/2" RACEWAY TO JUNCTION BOX ITEM #18 AND JUNCTION BOX ITEM #23. (LIGHT SWITCH)
18. OCTAGON JUNCTION BOX WITH 1/2" RACEWAY TO ITEMS #17, CIRCUIT BREAKER PANEL #23, AND ITEM #20. (NO EQUIPMENT OR DEVICES CLOSER THAN 19" FROM CENTER OF OCTAGON BOXES)
19. 2" X 4" JUNCTION BOX MOUNTED IN WALL AT 1000MM (39") ABOVE FLOOR WITH 1/2" RACEWAY TO JUNCTION BOX #20 AND JUNCTION BOX #23. (LIGHT SWITCH)
20. OCTAGON JUNCTION BOX WITH 1/2" RACEWAY TO ITEM #19 AND CIRCUIT BREAKER PANEL #23. (NO EQUIPMENT OR DEVICES CLOSER THAN 19" FROM CENTER OF OCTAGON BOXES)
21. 4" X 4" JUNCTION BOX MOUNTED NEXT TO ITEM #22 FOR INCOMING TELEPHONE TERMINATION.
22. 4" X 4" JUNCTION BOX MOUNTED 2" BELOW SHELF FOR COMMUNICATION WIRE TERMINATION.
23. LOCATION OF CUSTOMER PROVIDED AND FIELD INSTALLED C.B. PANEL MOUNTED BELOW COUNTER.
24. 4" X 4" JUNCTION BOX FOR ALARM CIRCUITS MOUNTED NEXT TO ITEM #22.
25. 4" OCTAGON JUNCTION BOX WITH 1/2" RACEWAY TO ITEM #24. (HEAT DETECTOR)
26. 2" X 4" JUNCTION BOX MOUNTED IN WALL 48" ABOVE FLOOR WITH 1/2" RACEWAY TO ITEM #24. (PULL STATION)
27. 1" CONDUIT RAN THROUGH WALL AND ENDED 6" ABOVE EXTERIOR GRADE FOR CONDENSING UNIT.
28. 2" X 4" JUNCTION BOX IN EXTERIOR WALL 48" ABOVE FLOOR WITH 1/2" RACEWAY TO JUNCTION BOX ITEM #10. (CARD READER)
29. 2" X 4" JUNCTION BOX MOUNTED IN WALL 1000MM (39") ABOVE FLOOR WITH 1/2" RACEWAY TO ITEM #16. (INDICATOR SWITCH)
30. CARRIER 2 TON HVAC UNIT WITH 10KW HEAT STRIP. UNIT SHIPPED LOOSE WITH ON INSTALLATION AND START UP BY OTHERS. DISCONNECT SWITCH AND SERVICE OUTLET PROVIDED AND INSTALLED ON SITE BY OTHERS.
31. 4" X 4" JUNCTION BOX WITH 3/4" RACEWAY TO STUB ABOVE ROOF AND 1/2" RACEWAY TO ITEM #23. (POWER FOR ROOF TOP CONDENSER)
32. 2" X 4" JUNCTION BOX MOUNTED 2" BELOW SHELF WITH 1/2" RACEWAY TO STUB ABOVE ROOF. (THERMOSTAT FOR ROOF TOP CONDENSER)
33. TOP HUNG HORIZONTAL SLIDING WINDOW, 2-REQ'D.
34. 25" X 25" ROOF ACCESS PANEL.
35. HEATER, 2-REQ'D - 240V/4,800 WATT WALL MOUNTED WITH INTEGRAL THERMOSTAT CONTROL WITH WIRING TO ITEM #23.

NOTE: PAR-KUT BOOTH IS OF SINGLE UNIT WELDED GALVANIZED STEEL CONSTRUCTION, FACTORY ASSEMBLED AND DELIVERED SET UP. FAILURE TO SECURELY ANCHOR BOOTH MAY RESULT IN OVERTURNING OF UNIT AND SERIOUS INJURY TO OCCUPANT.

- A. GLAZING - CLEAR INSULATED SAFETY GLAZING SET IN PAINTED STEEL EXTERIOR WINDOW FRAMES WITH REMOVABLE ANODIZED ALUMINUM INTERIOR GLAZING STOPS.
- B. PAINT - FINISH SHALL BE SINGLE COLOR, IMRON POLYURETHANE HIGH GLOSS INDUSTRIAL COATING. SHALL BE APPLIED TO ALL EXPOSED METAL SURFACES. THIS EXCLUDES FLOOR, ROOF SURFACE, ANODIZED ALUMINUM WINDOW FRAMES AND ANY STAINLESS STEEL COMPONENTS (IF USED).
- C. ELECTRICAL - NO WIRING BY PAR-KUT. PAR-KUT TO PROVIDE ONLY RACEWAYS WHICH SHALL BE 1/2"(MIN) E.M.T. PER NATIONAL ELECTRIC CODE. FIXTURES AND DEVICES ARE C.U.L. OR C.S.A. LABELED.
- D. BOOTH WILL HAVE NO CANOPY OVERHANG ON ANY SIDE.
- E. REMOVABLE LIFTING RING(S) PROVIDED ON ROOF.
- F. NO ON SITE WORK BY PAR-KUT.

NOTE: THIS PRINT AND DESIGN ARE THE PROPERTY OF PAR-KUT INTERNATIONAL, INC. IT MUST NOT BE REPRODUCED IN ANY MANNER, NOR SHALL IT BE SUBMITTED TO OUTSIDE PARTIES FOR EXAMINATION WITHOUT OUR CONSENT. IT SHALL BE USED ONLY AS A MEANS OF REFERENCE TO WORK DESIGNED AND FURNISHED BY PAR-KUT. PAR-KUT RESERVES THE RIGHT TO MAKE CHANGES TO DESIGN FOR ENGINEERING PURPOSES WITHOUT NOTICE. REVISIONS MAY NOT BE NOTED.

PAR-KUT INTERNATIONAL, INC.
40961 Production Drive
Harrison Twp, Mich.
48049-1591
Ph: (586) 468-2947
www.parkut.com

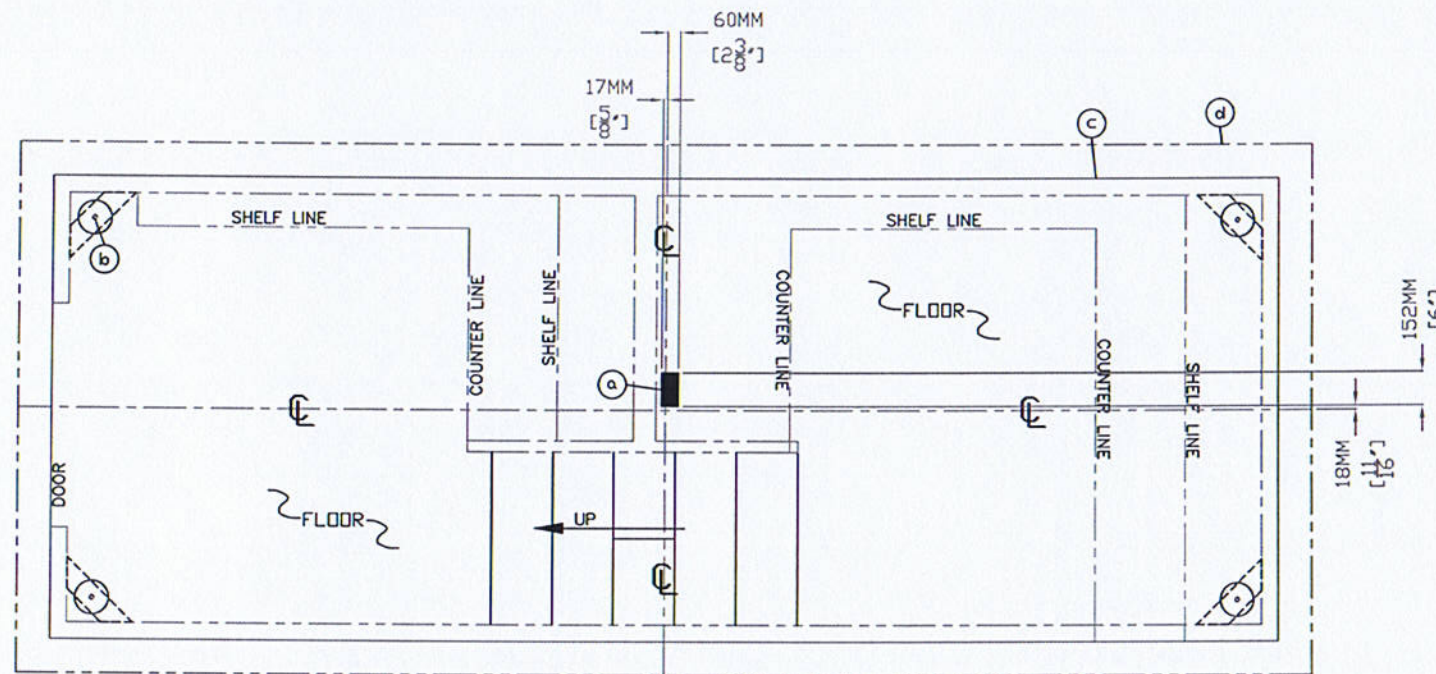


DWG# 11-250 SHEET A-1

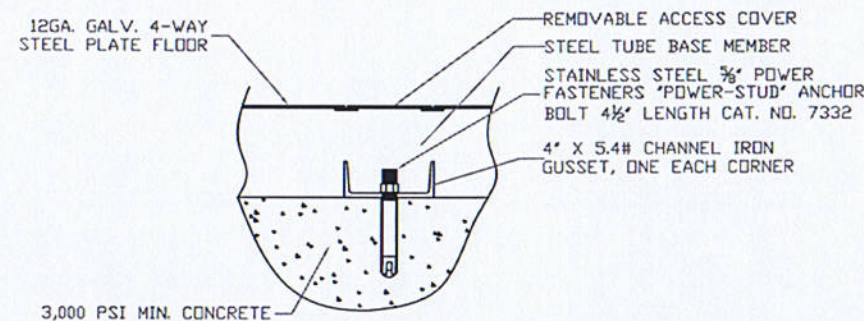
CBSA PORT REPLACEMENT
PENN-CO CONSTRUCTION
COULTER, MANITOBA, CANADA

| GENERAL NOTES | | |
|---|--|--|
| PAINT COLOR: GRAY #1366 | | |
| PLASTIC LAMINATE COLOR: COMPLEMENTARY COLOR | | |
| ESTIMATED WEIGHT: 10,000 LBS. | | |

| | | |
|-------------------|-------------------------|-------------------------------------|
| PO# | | |
| SCALE NTS | DRAWN BY NSG | REVISED 3-28-2012 |
| DATE 9-15-2011 | SIZE 2100MM X 5600MM | QTY 1 |
| CHK'D BY: | | SALES REPRESENTATIVE BRIAN KENNY |



SERVICE ENTRANCE/ANCHOR BOLT LAYOUT



FIELD DRILLED ANCHOR BOLT DETAIL
NO SCALE

THIS DRAWING IS FOR REFERENCE PURPOSES ONLY. PAR-KUT BUILDINGS MUST BE SECURELY ANCHORED IN PLACE AND MUST BE PROPERLY GROUNDED. ADEQUATE SIZED ANCHOR BOLTS SHALL BE USED. THE SIZE AND DEPTH OF THE ANCHORS SHOULD BE OF SUFFICIENT DESIGN TO WITHSTAND THE HIGHEST RECORDED WIND SPEEDS IN THE AREA OF INSTALLATION. CONSULT A PROFESSIONAL ENGINEER FAMILIAR WITH THE WEATHER CONDITIONS IN THE AREA.

- a. SLOT IN FLOOR FOR ELECTRICAL SERVICE ENTRANCE TO C.B. PANEL.
- b. 4" X 5.4# CHANNEL IRON WITH A 3/4" ANCHOR BOLT HOLE AND REMOVABLE ACCESS COVER, 4-REQ'D, ONE EACH CORNER. ANCHOR BOOTH AFTER FINAL LOCATION. ANCHOR BOLTS NOT INCLUDED.
- c. OUTER EDGE OF BOOTH.
- d. SUGGESTED MINIMUM FOUNDATION/SLAB.

GENERAL SITE INSTALLED ITEMS PROVIDED BY OTHERS

- 1. CONCRETE FOUNDATION/SLAB MINIMUM 6" DEEP 3,000 PSI MINIMUM (28 DAY ACI 318) REINFORCED. THE FOUNDATION/SLAB SHOULD BE MINIMUM OF 12" WIDER THAN THE ROOF LINE DIMENSIONS TO ALLOW A 6" CONCRETE BORDER ON EACH SIDE OF THE BUILDING ROOF LINE.
- 2. ADEQUATE SIZE DRILLED ANCHOR BOLTS. SUGGESTED SIZE 3/8" X 4 1/2" POWER FASTENERS "POWER STUD" CATALOG #7432.

ARCHITECTURAL SHOP DRAWING REVIEW

REVIEWED ☒
REVIEWED AS NOTED ☐
REVISE AND RESUBMIT ☐

Shop drawing review is only for the limited purpose of checking for conformance with information given and the design concept expressed in the Contract Documents. Review of such submittals is not conducted for the purpose of determining the accuracy and completeness of the shop drawings submitted or other details, such as dimensions and quantities, or for substantiating instructions for installation or performance of equipment or systems, all of which remain the responsibility of the Contractor, as required by the Contract documents. The Architect's review of the Contractor's submittals shall not relieve the Contractor of his obligations. The Architect's review shall not constitute approval of safety precautions or, unless otherwise specifically stated by the Architect, of any construction means, methods, techniques, sequences or procedures. The Architect's review of a specific item shall not indicate review or approval of an assembly of which the item is a component.

The architectural component of shop drawings are only confirmed reviewed, upon the receipt of complete approvals from the General Contractor (GC). The GC confirmed review assumes that the work shown within the shop drawing is what was specified/drawn on the Contract Documents and that full consideration by the GC for integration has taken place, prior to submission to the architect.

Verne Reimer Architecture Incorporated

Date 01 APR 2012

Page 2 of 4

Reviewed By: [Signature]

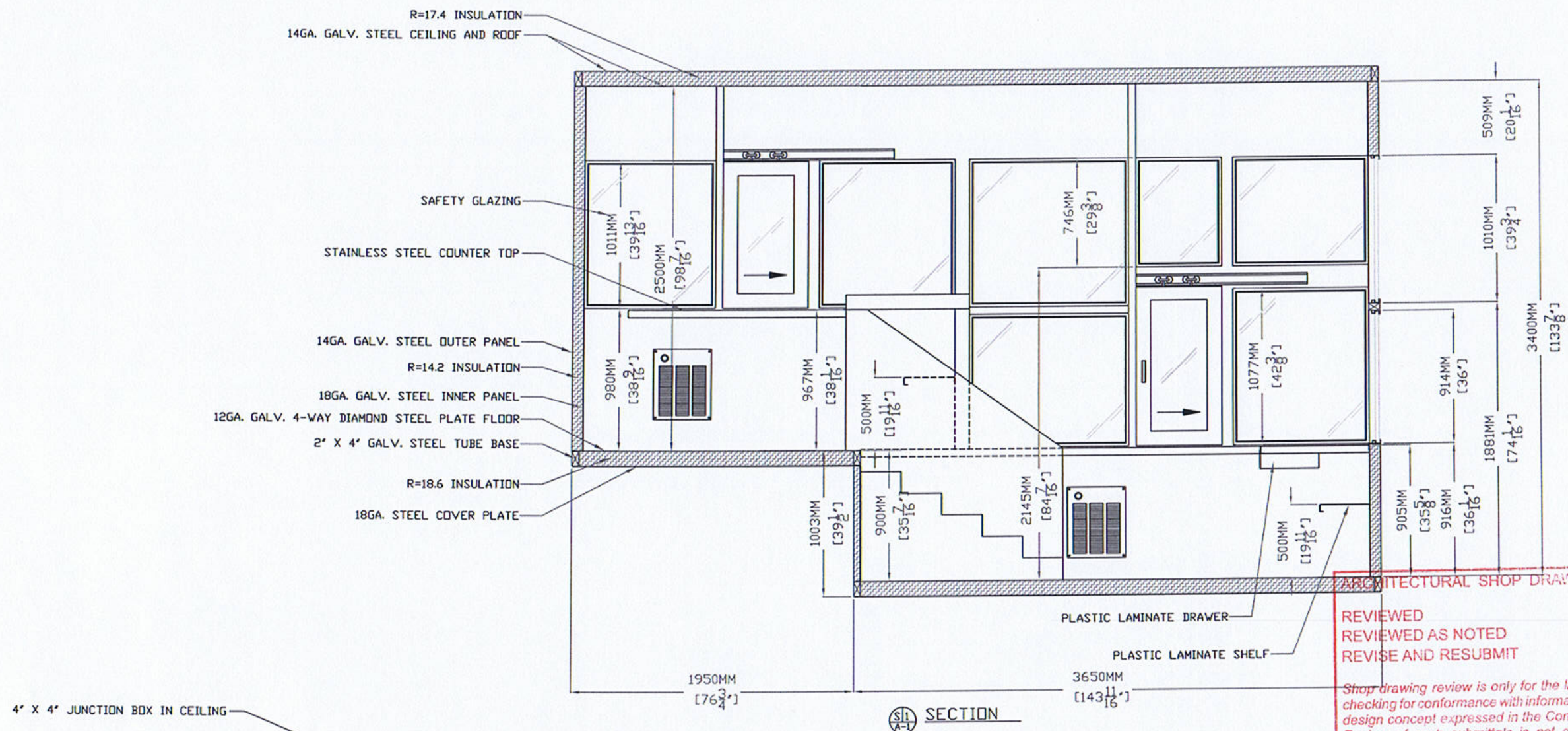
NOTE: THIS PRINT AND DESIGN ARE THE PROPERTY OF PAR-KUT INTERNATIONAL, INC. IT MUST NOT BE REPRODUCED IN ANY MANNER, NOR SHALL IT BE SUBMITTED TO OUTSIDE PARTIES FOR EXAMINATION WITHOUT OUR CONSENT. IT SHALL BE USED ONLY AS A MEANS OF REFERENCE TO WORK DESIGNED AND FURNISHED BY PAR-KUT. PAR-KUT RESERVES THE RIGHT TO MAKE CHANGES TO DESIGN FOR ENGINEERING PURPOSES WITHOUT NOTICE. REVISIONS MAY NOT BE NOTED.

PAR-KUT INTERNATIONAL, INC.
40961 Production Drive
Harrison Twp., Mich.
48049-1551
PH (586) 468-2947
www.parkut.com

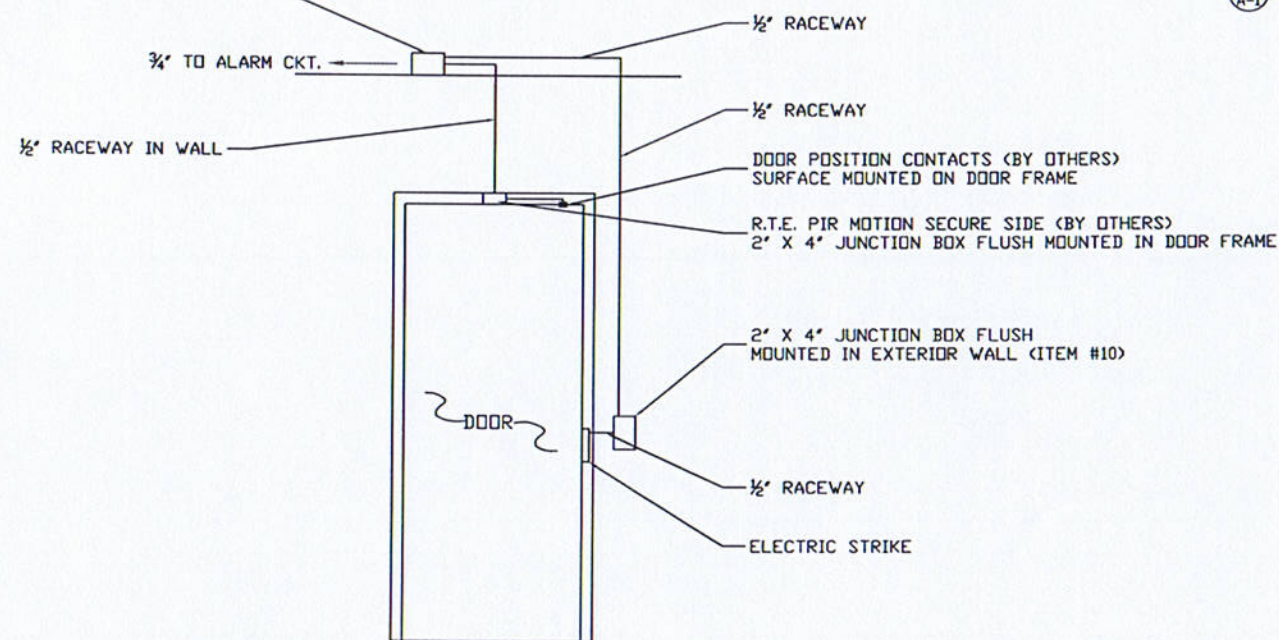
DWG# 11-250 SHEET A-2

CBSA PORT REPLACEMENT
PENN-CD CONSTRUCTION
COULTER, MANITOBA, CANADA

| | | | |
|-----------|----------------------|----------|-----------|
| PD# | SCALE | DRAWN BY | REVISED |
| | NTS | NSG | 3-28-2012 |
| DATE | SIZE | QTY | |
| 9-15-2011 | 2100MM X 5600MM | 1 | |
| CHK'D BY: | SALES REPRESENTATIVE | | |
| | BRIAN KENNY | | |



SECTION



DETAIL

ARCHITECTURAL SHOP DRAWING REVIEW

REVIEWED
REVIEWED AS NOTED
REVISE AND RESUBMIT

Shop drawing review is only for the limited purpose of checking for conformance with information given and the design concept expressed in the Contract Documents. Review of such submittals is not conducted for the purpose of determining the accuracy and completeness of the shop drawings submitted or other details, such as dimensions and quantities, or for substantiating instructions for installation or performance of equipment or systems, all of which remain the responsibility of the Contractor, as required by the Contract documents. The Architect's review of the Contractor's submittals shall not relieve the Contractor of his obligations. The Architect's review shall not constitute approval of safety precautions or, unless otherwise specifically stated by the Architect, of any construction means, methods, techniques, sequences or procedures. The Architect's review of a specific item shall not indicate review or approval of an assembly of which the item is a component.

The architectural component of shop drawings are only confirmed reviewed, upon the receipt of complete approvals from the General Contractor (GC). The GC confirmed review assumes that the work shown within the shop drawing is what was specified/drawn on the Contract Documents and that full consideration by the GC for integration has taken place, prior to submission to the architect.

Verne Reimer Architecture Incorporated

Date 14 APR 2012

Page 3 of 4

Reviewed By [Signature]

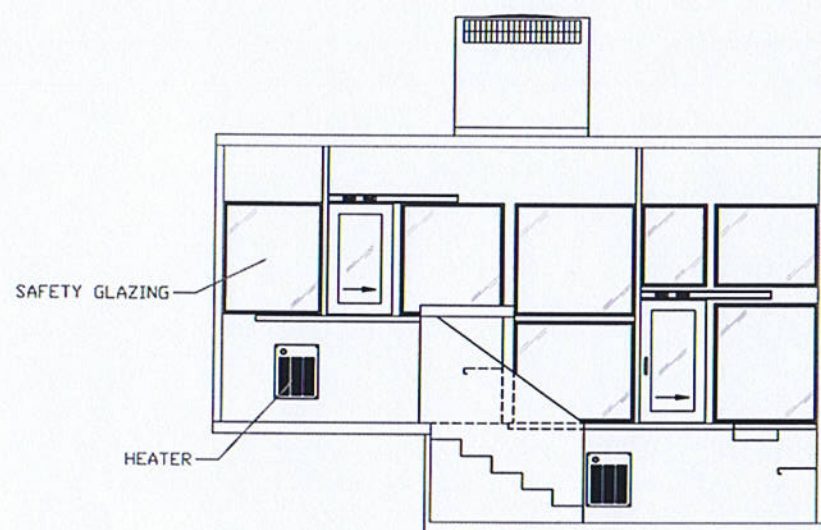
NOTE: THIS PRINT AND DESIGN ARE THE PROPERTY OF PAR-KUT INTERNATIONAL, INC. IT MUST NOT BE REPRODUCED IN ANY MANNER, NOR SHALL IT BE SUBMITTED TO OUTSIDE PARTIES FOR EXAMINATION WITHOUT OUR CONSENT. IT SHALL BE USED ONLY AS A MEANS OF REFERENCE TO WORK DESIGNED AND FURNISHED BY PAR-KUT. PAR-KUT RESERVES THE RIGHT TO MAKE CHANGES TO DESIGN FOR ENGINEERING PURPOSES WITHOUT NOTICE. REVISIONS MAY NOT BE NOTED.

PAR-KUT INTERNATIONAL, INC.
40961 Production Drive
Harrison Twp, Mich.
48049-1501
Ph: (586) 468-2947
www.parkut.com

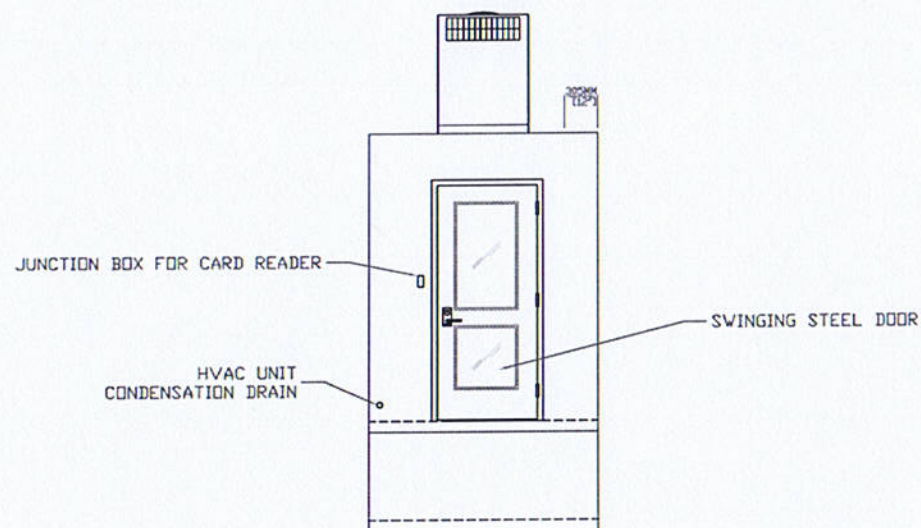
DWG# 11-250 SHEET A-3

CBSA PORT REPLACEMENT
PENN-CD CONSTRUCTION
COULTER, MANITOBA, CANADA

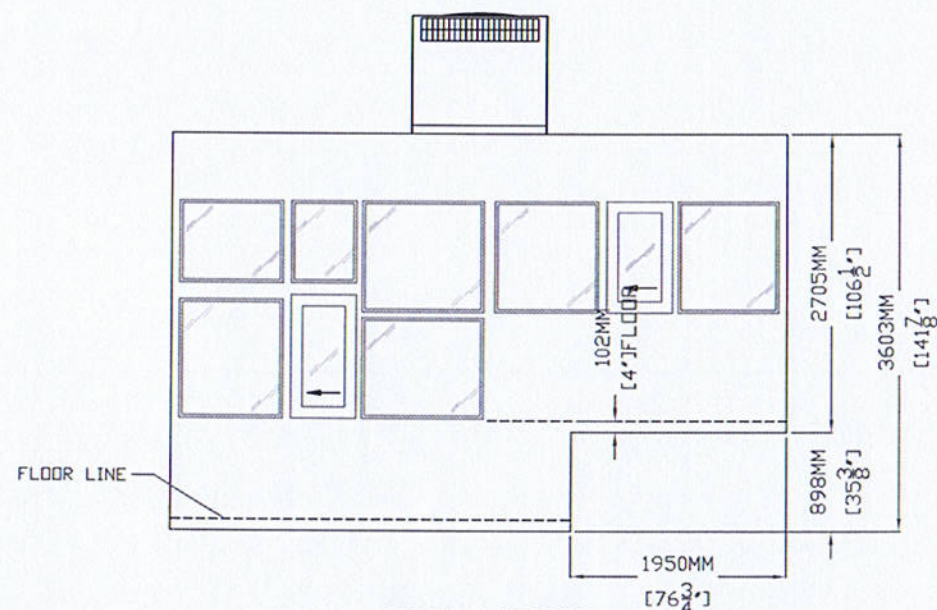
| | | |
|-------------------|-------------------------------------|----------------------|
| SCALE NTS | DRAWN BY NSG | REVISED 3-28-2012 |
| DATE 9-15-2011 | SIZE 2100MM X 5600MM | QTY 1 |
| CHK'D BY: | SALES REPRESENTATIVE BRIAN KENNY | |



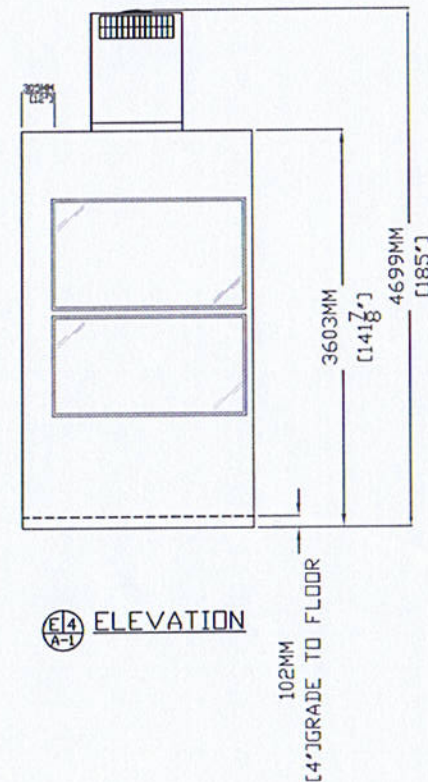
E11 ELEVATION



E12 ELEVATION



E13 ELEVATION



E14 ELEVATION

ARCHITECTURAL SHOP DRAWING REVIEW

REVIEWED ☒
 REVIEWED AS NOTED ☐
 REVISE AND RESUBMIT ☐

Shop drawing review is only for the limited purpose of checking for conformance with information given and the design concept expressed in the Contract Documents. Review of such submittals is not conducted for the purpose of determining the accuracy and completeness of the shop drawings submitted or other details, such as dimensions and quantities, or for substantiating instructions for installation or performance of equipment or systems, all of which remain the responsibility of the Contractor, as required by the Contract documents. The Architect's review of the Contractor's submittals shall not relieve the Contractor of his obligations. The Architect's review shall not constitute approval of safety precautions or, unless otherwise specifically stated by the Architect, of any construction means, methods, techniques, sequences or procedures. The Architect's review of a specific item shall not indicate review or approval of an assembly of which the item is a component.

The architectural component of shop drawings are only confirmed reviewed, upon the receipt of complete approvals from the General Contractor (GC). The GC confirmed review assumes that the work shown within the shop drawing is what was specified/drawn on the Contract Documents and that full consideration by the GC for integration has taken place, prior to submission to the architect.

Verne Reimer Architecture Incorporated

Date 01 APR 2012

Page 4 of 4

Reviewed By [Signature]

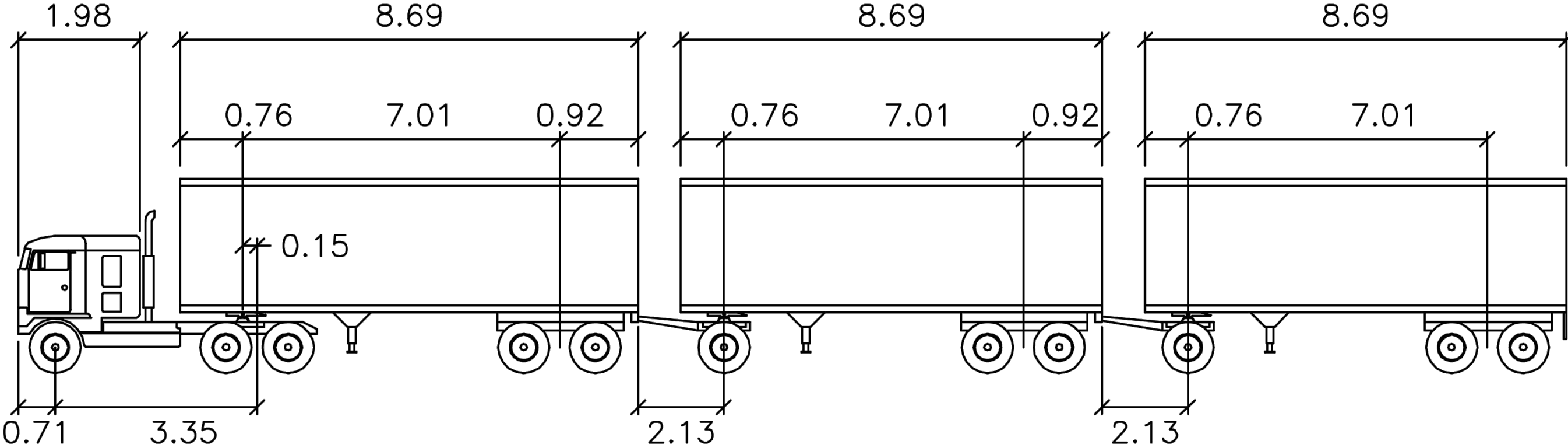
NOTE: THIS PRINT AND DESIGN ARE THE PROPERTY OF PAR-KUT INTERNATIONAL, INC. IT MUST NOT BE REPRODUCED IN ANY MANNER, NOR SHALL IT BE SUBMITTED TO OUTSIDE PARTIES FOR EXAMINATION WITHOUT OUR CONSENT. IT SHALL BE USED ONLY AS A MEANS OF REFERENCE TO WORK DESIGNED AND FURNISHED BY PAR-KUT. PAR-KUT RESERVES THE RIGHT TO MAKE CHANGES TO DESIGN FOR ENGINEERING PURPOSES WITHOUT NOTICE. REVISIONS MAY NOT BE NOTED.

PAR-KUT INTERNATIONAL, INC.
 40961 Production Drive
 Harrison Twp, Mich.
 48049-1551
 PH (586) 468-2947
 www.parkut.com

DWG# 11-250 SHEET A-4

CBSA PORT REPLACEMENT
 PENN-CO CONSTRUCTION
 COULTER, MANITOBA, CANADA

| | | | |
|-----------|----------------------|----------|-----------|
| PO# | SCALE | DRAWN BY | REVISED |
| | NTS | NSG | 3-28-2012 |
| DATE | SIZE | QTY | |
| 9-15-2011 | 2100MM x 5600MM | 1 | |
| CHK'D BY: | SALES REPRESENTATIVE | | |
| | BRIAN KENNY | | |



WB-30TM
meters

Tractor Width
Trailer Width
Tractor Track
Trailer Track

: 2.44
: 2.59
: 2.44
: 2.59

Lock to Lock Time
Steering Angle
Articulating Angle

: 6.0
: 15.6
: 70.0

PRELIMINARY
NOT FOR CONSTRUCTION

| | | | | | | | | |
|---|---|--|------------------------------------|--|--|---|-------|----------|
| Client CANADA BORDER SERVICES AGENCY 427 Laurier Avenue West, 10th Floor Ottawa, Ontario, K1A 0L8 | Project title EXPANSION OF CBSA INSPECTION INFRASTRUCTURE AT EMERSON MB | Drawing title DESIGN VEHICLE | Drawn by JAMES HUTCHINGS | | | PWGSC Project Manager JAMES HUTCHINGS | | |
| | | | Designed by | | | Project no. R.068431.003 | | |
| | | | Approved by | | | Date JUNE 2014 | Sheet | Revision |



Client

CANADA BORDER SERVICES AGENCY
427 Laurier Avenue West, 10th Floor
Ottawa, Ontario, K1A 0L8

Project title

EXPANSION OF CBSA INSPECTION
INFRASTRUCTURE AT EMERSON MB

Drawing title

AERIAL VIEW
OF 2009 FLOOD

Drawn by
JAMES HUTCHINGS

Designed by

Approved by

PWGSC Project Manager
JAMES HUTCHINGS

Project no.
R.068431.003

Date
JUNE 2014

Sheet

Revision

PWGSC – ANSI B–L2 – 11X17

A000