

RETURN BIDS TO:
RETOURNER LES SOUMISSIONS À:
Bid Receiving - PWGSC / Réception des soumissions
- TPSGC
11 Laurier St. / 11, rue Laurier
Place du Portage, Phase III
Core 0B2 / Noyau 0B2
Gatineau, Québec K1A 0S5
Bid Fax: (819) 997-9776

SOLICITATION AMENDMENT MODIFICATION DE L'INVITATION

The referenced document is hereby revised; unless otherwise indicated, all other terms and conditions of the Solicitation remain the same.

Ce document est par la présente révisé; sauf indication contraire, les modalités de l'invitation demeurent les mêmes.

Comments - Commentaires

Vendor/Firm Name and Address
Raison sociale et adresse du
fournisseur/de l'entrepreneur

Issuing Office - Bureau de distribution
Electrical & Electronics Products Division
11 Laurier St./11, rue Laurier
7B3, Place du Portage, Phase III
Gatineau, Québec K1A 0S5

Title - Sujet Fence Detection System	
Solicitation No. - N° de l'invitation 21120-148250/A	Amendment No. - N° modif. 002
Client Reference No. - N° de référence du client 21120-14-1948250	Date 2015-03-11
GETS Reference No. - N° de référence de SEAG PW-\$\$HN-329-66700	
File No. - N° de dossier hn329.21120-148250	CCC No./N° CCC - FMS No./N° VME
Solicitation Closes - L'invitation prend fin at - à 02:00 PM on - le 2015-04-13	Time Zone Fuseau horaire Eastern Daylight Saving Time EDT
F.O.B. - F.A.B. Plant-Usine: <input type="checkbox"/> Destination: <input checked="" type="checkbox"/> Other-Autre: <input type="checkbox"/>	
Address Enquiries to: - Adresser toutes questions à: Dumaresq, Steve	Buyer Id - Id de l'acheteur hn329
Telephone No. - N° de téléphone (819) 956-3487 ()	FAX No. - N° de FAX (819) 953-4944
Destination - of Goods, Services, and Construction: Destination - des biens, services et construction:	

Instructions: See Herein

Instructions: Voir aux présentes

Delivery Required - Livraison exigée	Delivery Offered - Livraison proposée
Vendor/Firm Name and Address Raison sociale et adresse du fournisseur/de l'entrepreneur	
Telephone No. - N° de téléphone Facsimile No. - N° de télécopieur	
Name and title of person authorized to sign on behalf of Vendor/Firm (type or print) Nom et titre de la personne autorisée à signer au nom du fournisseur/ de l'entrepreneur (taper ou écrire en caractères d'imprimerie)	
Signature	Date

Cette modification 002 est apportée pour répondre aux questions suivantes:

1) Are there any requirements to add conduits for the new installation from the CER to the perimeter?
No, from the site visit, it has been noticed that the conduits was reusable.

2) Can we confirm the perimeter length?
See attached drawing.

3) The existing system does not have any gate contact, are there any requirements to add gate contacts to all available gates?

Yes, for the Sally Port area.

4) Please confirm the requirements for additional rack units.
No requirement for additional cabinet. The actual rack must be reused.

5) When removing the existing equipment, do we return the equipment to CSC, if yes, to whom?
Refer to the STR, section 4.3, to the CFM.

6) Are there any requirements to change the FDS audio display unit at the MCCP?
Yes, section 4.5 of the STR refers to it.

7) Do we require adding bollards to each FDS processor in order to protect them during snow removal?
No.

8) In the STR section 5.3, the requirement is to provide ten copies of the operator manuals, what operator manual? For the existing S100 operating manual display system?
STR refer to the Manual use for the operator training. CSC will accept if the contractor limits this documentation to a few example paper copies and 2 electronic versions on CD/DVD.

9) Can an extension of 10 business days be issued from the release of the response of the answers to questions?

Solicitation extended until 13 April 2015.

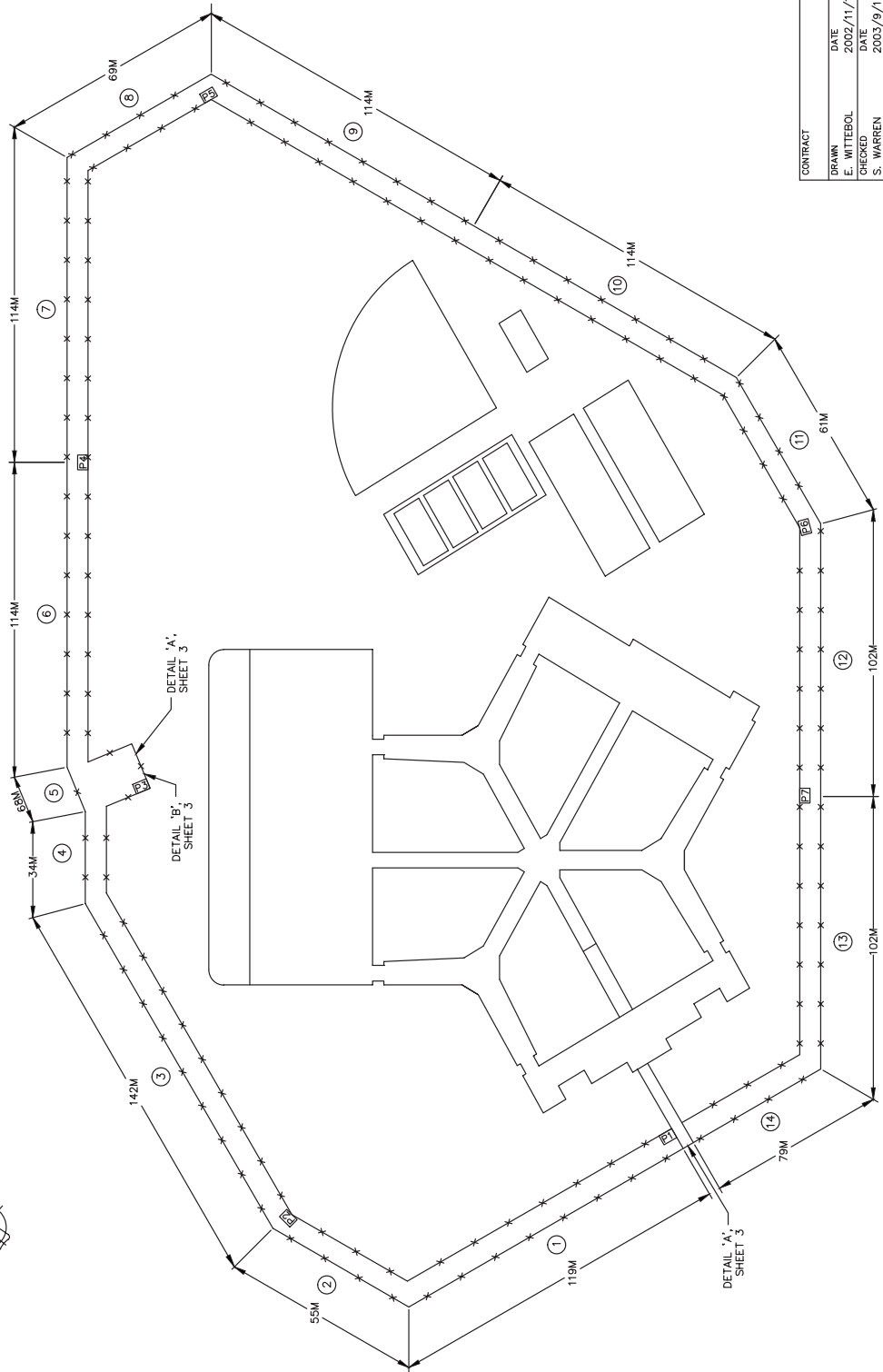
TOUS LES AUTRES TERMES ET MODALITÉS DEMEURENT INCHANGÉES

8 7 6 5 4 3 2 1

DWG/PART No. C1-100066 SHT 1 REV. 2

COMPUTER GENERATED
DO NOT REVISE MANUALLY
DO NOT SCALE DRAWING

REVISION COLUMN			
ZONE	REV.	DESCRIPTION	DATE
0	PRELIMINARY		03/3/26
1	UPDATES	E.W.	03/9/15
2	UPDATES	04/4/15 E.W.	04/4/15



LEGEND	
EX	INTELL-FLEX PROCESSOR
Ⓢ	ZONE NUMBER
—X—	FENCE

THIS DOCUMENT CONTAINS INFORMATION WHICH IS PROPRIETARY TO SENSAR. IT IS THE PROPERTY OF SENSAR AND IS NOT TO BE REPRODUCED, COPIED, OR DISCLOSED TO ANYONE WITHOUT PRIOR WRITTEN PERMISSION OF SENSAR-STELLAR CORPORATION IS STRICTLY PROHIBITED.

SENSTAR **STELLAR**
110 JON QUINLAN DR
CARP, ONTARIO
CANADA K0A 1L0

DWG/PART DESCRIPTION
INSTALLATION DIAGRAM,
ARCHAMBAULT, FDS

DWG SIZE	D	DWG/PART No.	C1-100066
FSM No.	68327	PRODUCT/PROJECT	100066
DWG TYPE	NTS	SCALE	1 OF 4
VARIATION/DOC. TYPE	1	SHEET	1
VERSION/EDITION	1	OF	4

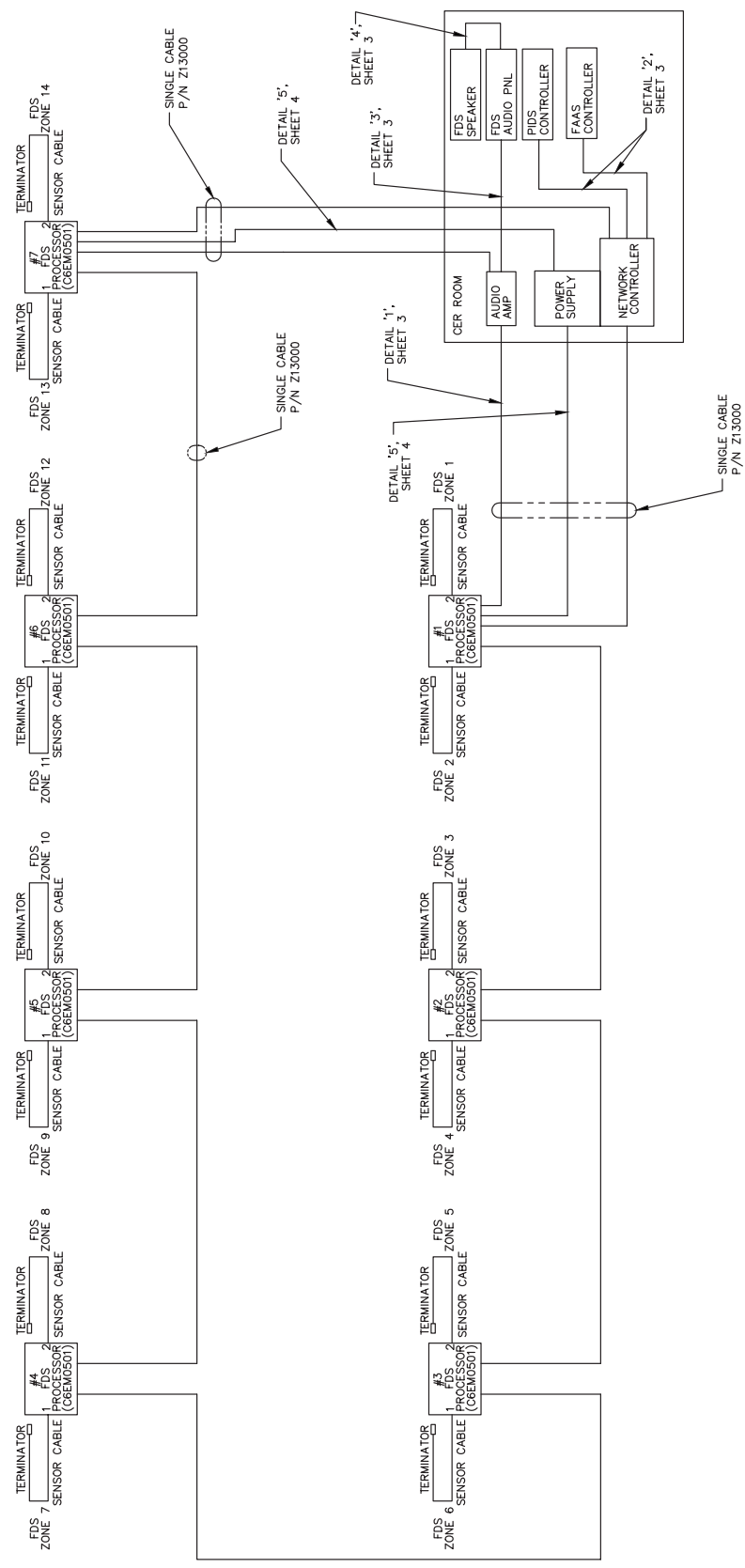
CONTRACT	
DRAWN	DATE
E. WITTEBOL	2002/11/15
CHECKED	DATE
S. WARREN	2003/9/15
APPROVED	DATE
APPROVED	DATE
APPROVED	DATE

NOTES

DWG/PART No. C-100066 SHT 2 REV. 2

COMPUTER GENERATED
DO NOT REVISE MANUALLY
DO NOT SCALE DRAWING

REVISION COLUMN	
ZONE	REV.
0	PRELIMINARY
1	UPDATES
2	UPDATES



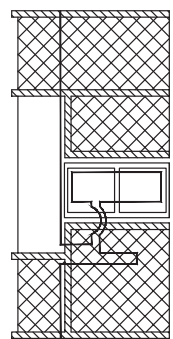
SENSTAR
119 JOHN CANNING RD
CARP, ONTARIO
CANADA K0A 1L0

DWG/PART No.	
D	68327
FSCM No.	
C111000101616	68327
PROJECT	
NTS	SCALE
SHEET	
2	OF 4
VERSION/	
1	OF 4

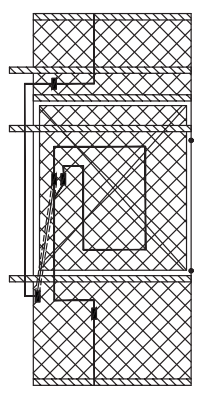
1. SEE SHEETS 3 & 4 OF THIS DRAWING FOR CABLE DETAILS.

NOTES

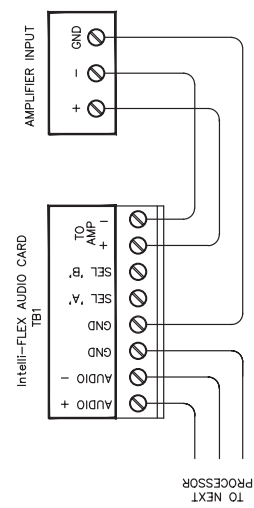
REVISION COLUMN	
ZONE	REV.
0	PRELIMINARY
1	UPDATES
2	UPDATES



DETAIL 'A'

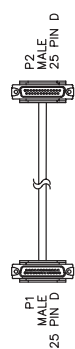


DETAIL 'B'



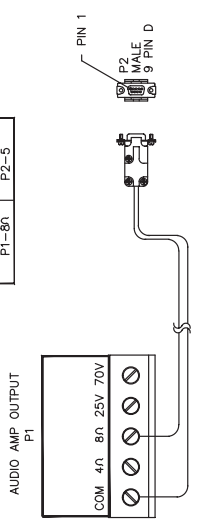
DETAIL 'C'

WIRING LIST	
FROM TERMINATION	TO TERMINATION
P1-1	P2-1
P1-2	P2-2
P1-3	P2-3
P1-7	P2-7



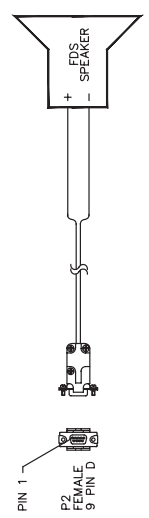
DETAIL 'D'

CABLE RUNNING LIST	
FROM TERMINATION	TO TERMINATION
P1-COM	P2-1
P1-8n	P2-5



DETAIL 'E'

CABLE RUNNING LIST	
FROM TERMINATION	TO TERMINATION
P1-6	P2-+
P1-9	P2--



DETAIL 'F'

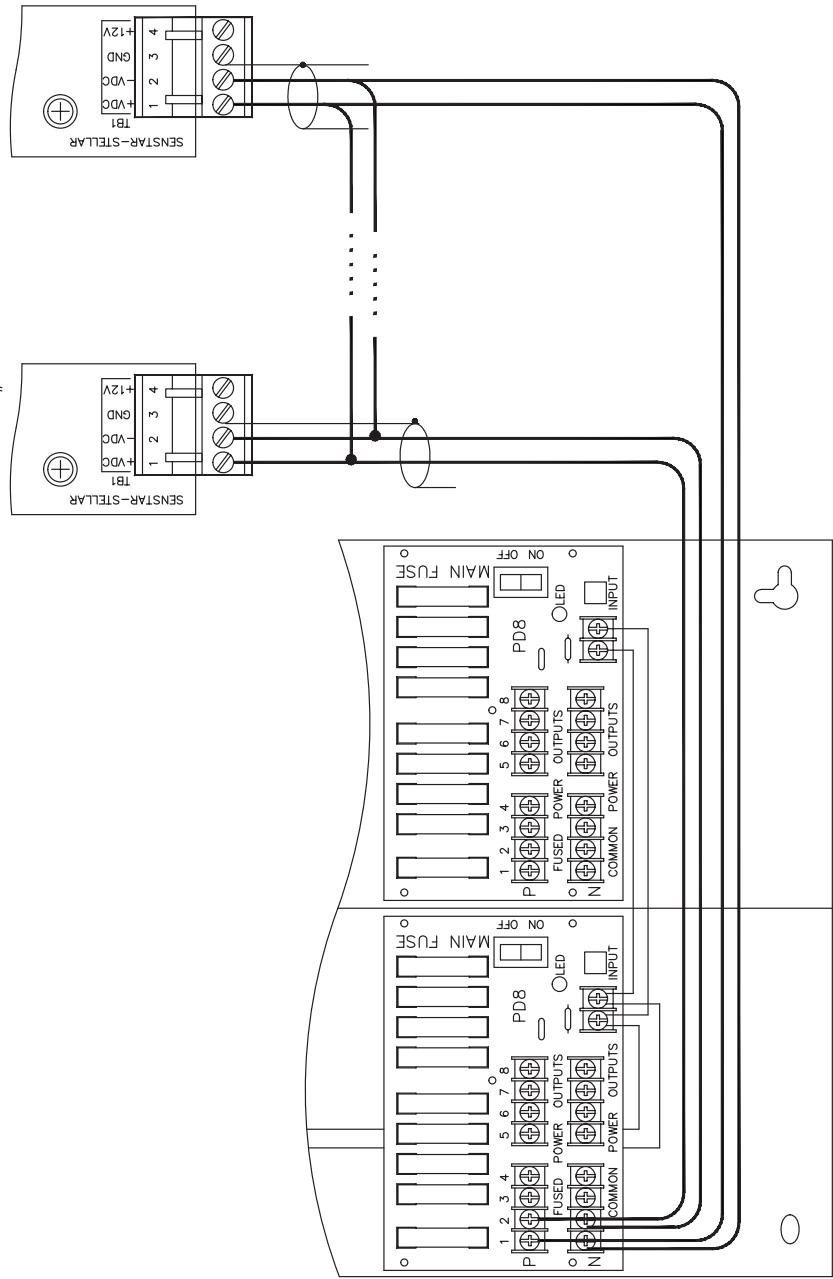
SENSTAR STELLAR
119 JOHN CANNING RD
CARP, ONTARIO
CANADA K0A 1L0

DWG. SIZE	D	DWG. PART No.	C1-100066	SCALE	NTS	SHEET	3	OF	4
PROJECT	68327	PRODUCT	100066	VARIATION/DOC. TYPE		VERSION/EDITION			

DWG/PART No. C-100066 SHT 4 REV. 2

REVISION COLUMN	
ZONE	REV.
0	PRELIMINARY
1	UPDATES
2	UPDATES

FIRST C6EM0501 PROCESSOR #1 IN STRING LAST C6EM0501 PROCESSOR #9 IN STRING



DETAIL 'C'

119 JOHN CAVANAGH RD
CARP, ONTARIO
CANADA K0A 1L0

DWG. SIZE	D				DWG/PART No.			
FSCM No.	C	1	0	0	0	1	6	16
PRODUCT / PROJECT	C-100066				DWG TYPE / VARIATION / SEQ. TYPE			
SCALE	68327				NTS	SHEET		4 OF 4

8 7 6 5 4 3

8 7 6 5 4 3 2 1

D C B A

D C B A