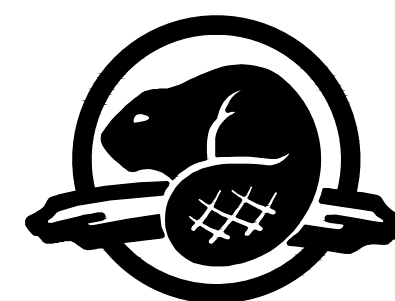


Parcs
Canada

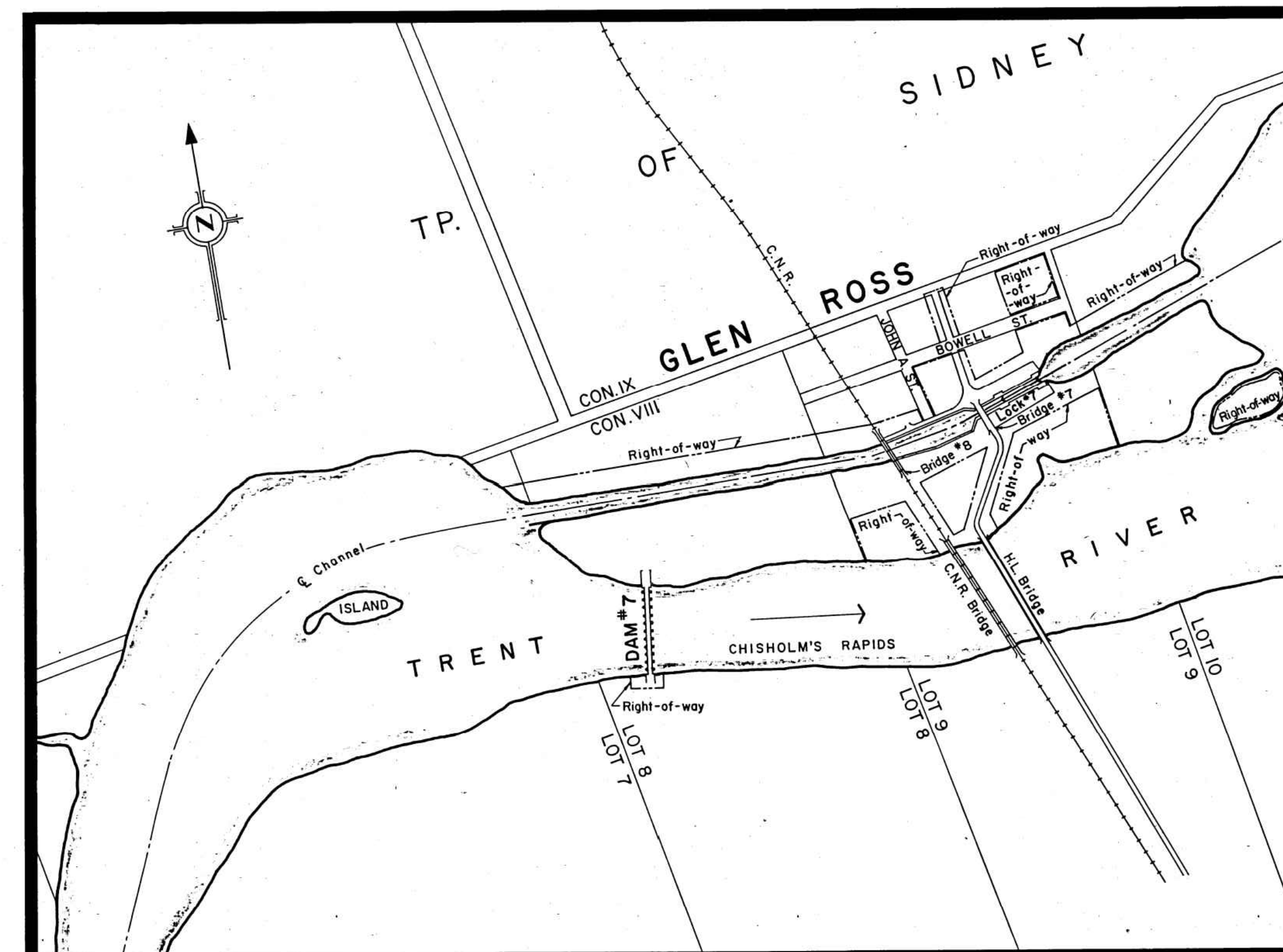
Parks
Canada



Canada

GLEN ROSS DAM SAFETY BOOM

15 MCGUIRE LANE,
SYDNEY TWP. QUINTE WEST, ONTARIO



KEY PLAN
N.T.S.

DWG No.	DESCRIPTION
GLE-01	EXISTING SITE PLAN
GLE-02	PROPOSED SAFETY BOOM
GLE-03	MISCELLANEOUS DETAILS

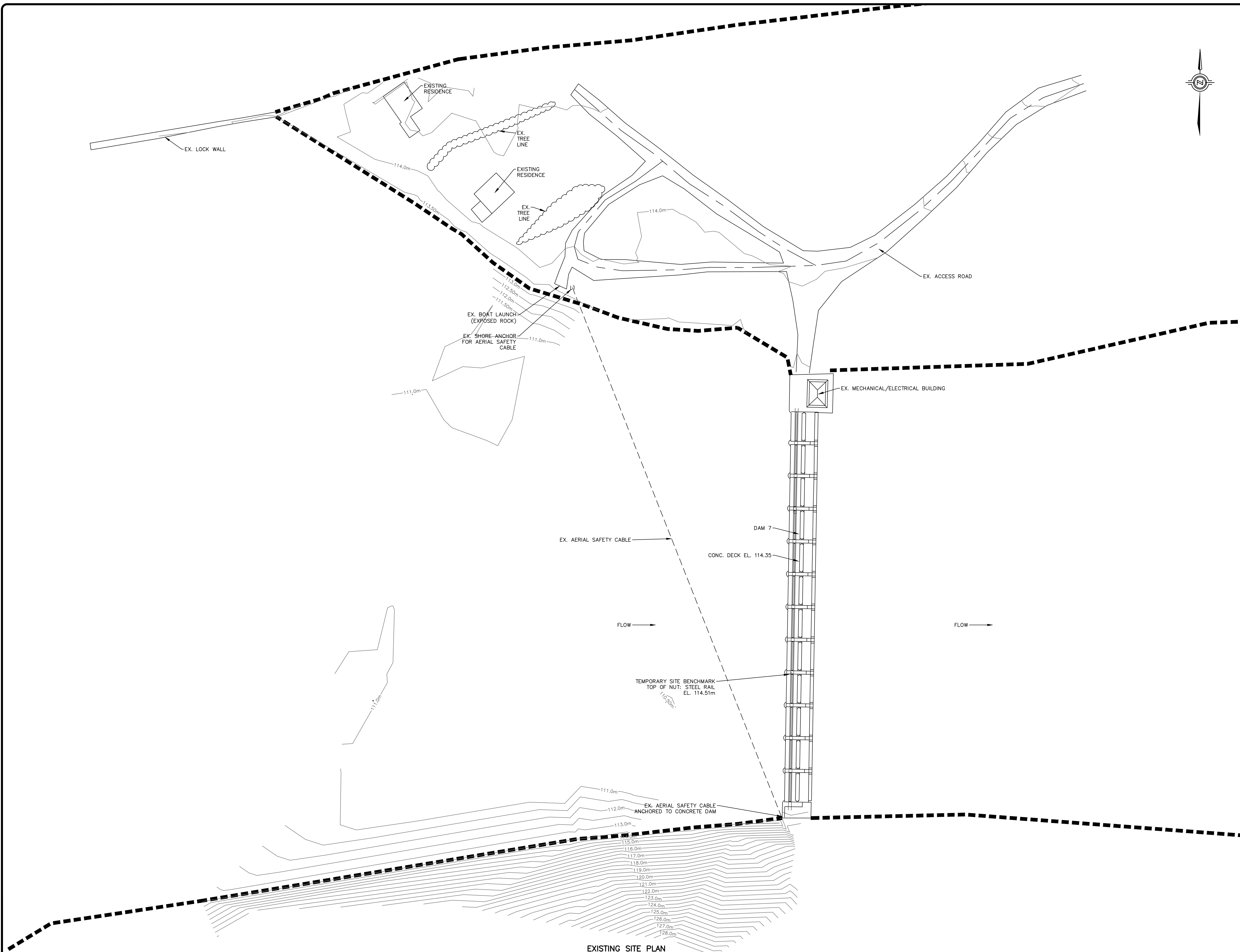
ISSUED FOR TENDER

exp Services Inc.
t: +1.905.793.9800 | f: +1.905.793.0641
1595 Clark Boulevard
Brampton, ON L6T 4V1
Canada
www.exp.com



PROJECT No.:
BRM00605127a

• BUILDINGS • EARTH & ENVIRONMENT • ENERGY •
• INDUSTRIAL • INFRASTRUCTURE • SUSTAINABILITY •



Keyplan: (NTS)



GENERAL NOTES:

1. ALL DIMENSIONS AND ELEVATIONS SHOWN ARE METRIC, UNLESS OTHERWISE NOTED.

No.	REVISIONS	Date	By	App.
E	ISSUED FOR TENDER	FEB 10, 2015	T.M.	WAG
D	ISSUED FOR 99% SUBMISSION	DEC 04, 2014	T.M.	WAG
C	ISSUED FOR 66% SUBMISSION	SEPT 29, 2014	T.M.	WAG
B	RE-ISSUED FOR REVIEW	MAY 26, 2014	T.M.	WAG
A	ISSUED FOR REVIEW	FEB 18, 2014	T.M.	WAG



exp Services Inc.
 T: +1.905.793.9800 | F: +1.905.793.0641
 1595 Clark Boulevard
 Brampton, ON L6T 4V1
 Canada
 www.exp.com

exp.

- BUILDINGS • EARTH & ENVIRONMENT • ENERGY •
- INDUSTRIAL • INFRASTRUCTURE • SUSTAINABILITY •

Owner/Client:
 Parcs Canada
 Parks Canada

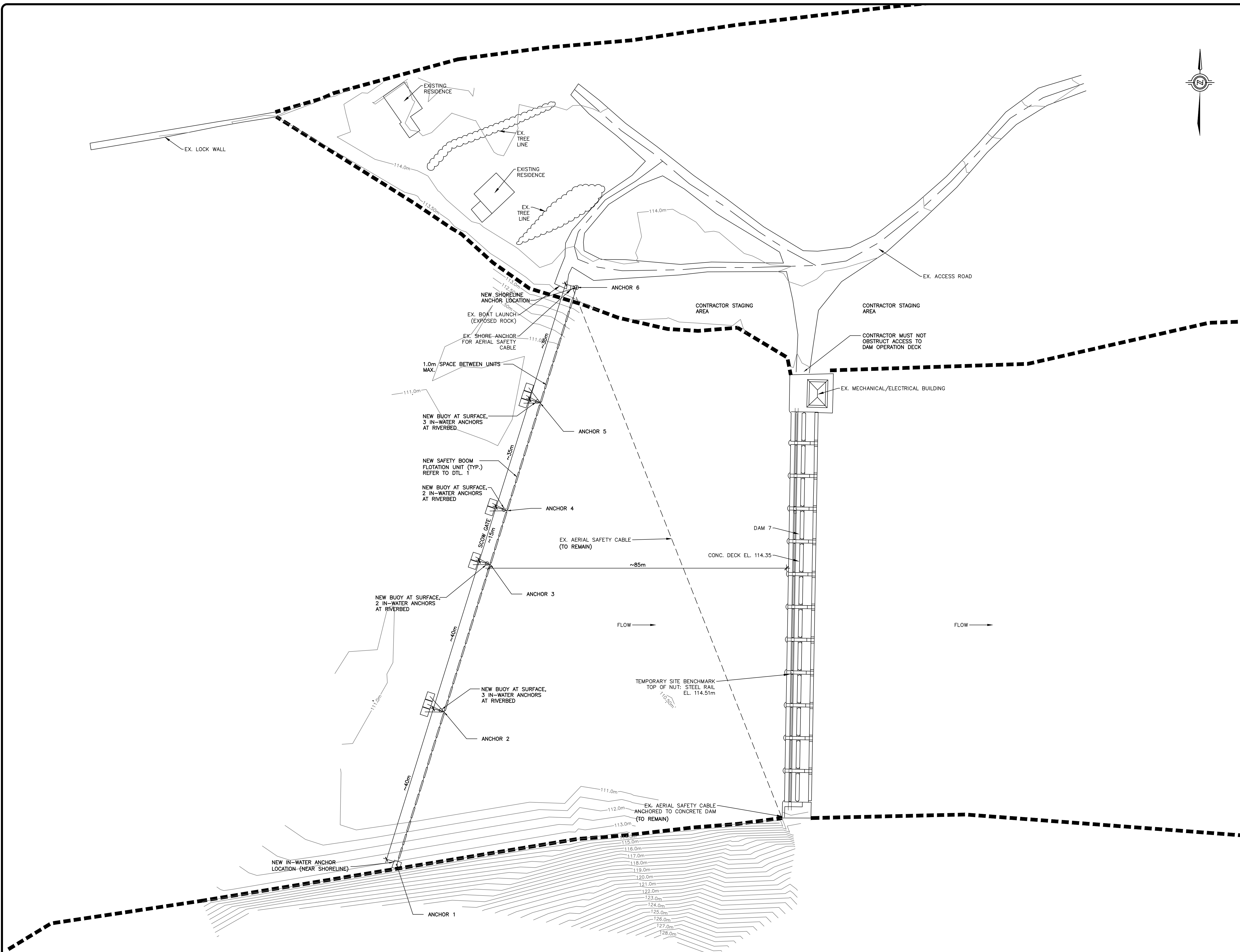
Canada

Location:
 15 MCGUIRE LANE, GLEN ROSS,
 SYDNEY TWP. QUINTE WEST, ONTARIO

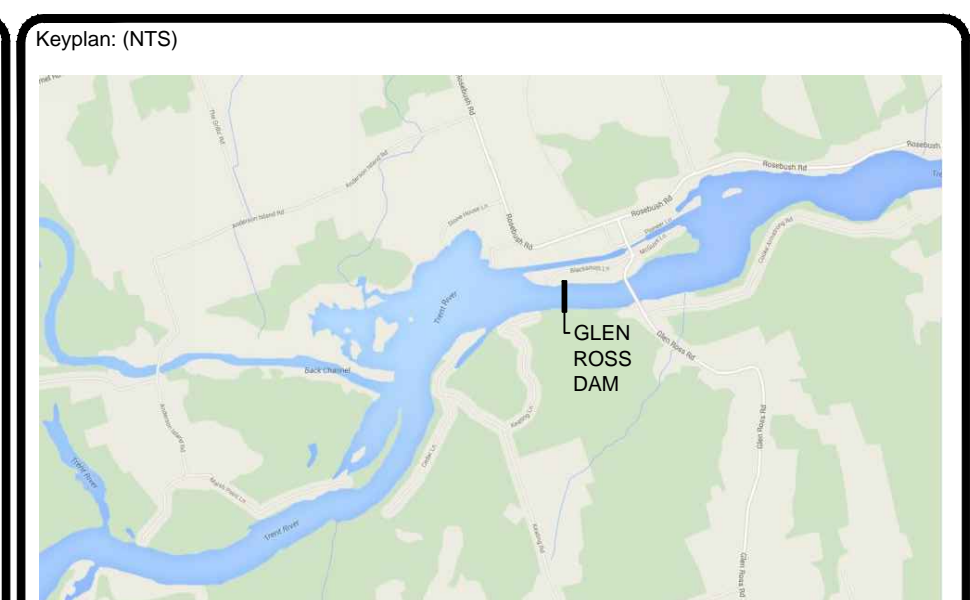
Title:
 EXISTING SITE PLAN

CAD File: BRM00605127a GLE-01-RD	Base File:
Designed By: T.M.	Drawn By: T.M.
Scale: AS NOTED	Date: DECEMBER 2013
Dam No.: ---	Project No.: BRM00605127a
Checked By: W.A.G.	Drawing No.: GLE-01

EXISTING SITE PLAN
 SCALE 1:500

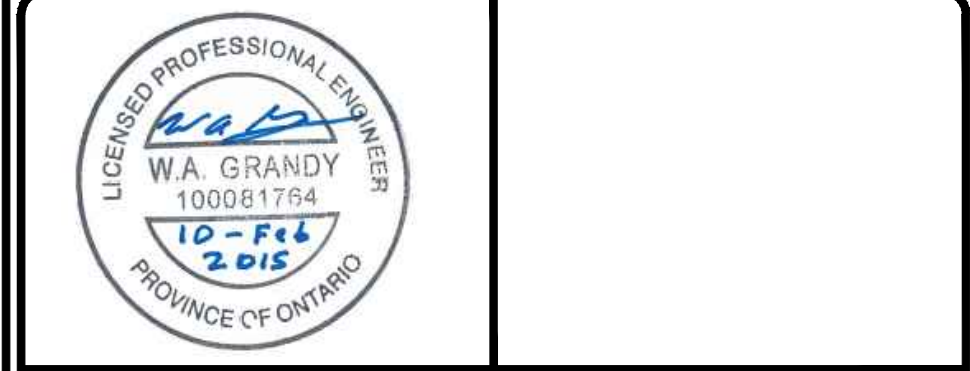


PLAN
EXISTING SITE
SCALE 1:500



- GENERAL NOTES:**
1. ALL DIMENSIONS AND ELEVATIONS SHOWN ARE METRIC, UNLESS OTHERWISE NOTED.
 2. WHEN UNINSTALLED BOOM MATERIALS ARE STORED ON SITE OVERNIGHT OR OUTSIDE OF WORKING HOURS, THEY MUST BE CONTAINED WITHIN A LOCKED ENCLOSURE (I.E. 1.8M HIGH SECURITY FENCE).
 3. DO NOT OBSTRUCT ACCESS ROAD. OBTAIN GATE KEY FOR THE EATS ENTRANCE FROM PARKS CANADA. GATE MUST REMAIN LOCKED AT ALL TIMES. RELINQUISH KEY AT COMPLETION OF WORK.

No.	REVISIONS	Date	By	App.
G	ISSUED FOR TENDER	FEB 10 2015	T.M.	WAG
F	ISSUED FOR 99% SUBMISSION	DEC 04 2014	T.M.	WAG
E	ISSUED FOR 66% SUBMISSION	SEPT 29 2014	K.R.	WAG
D	RE-ISSUED FOR 33% SUBMISSION	MAY 28 2014	Z.S.	WAG
C	RE-ISSUED FOR 33% SUBMISSION	MAY 02 2014	Z.S.	WAG
B	RE-ISSUED FOR 33% SUBMISSION	MAR. 11 2014	T.M.	WAG
A	ISSUED FOR 33% SUBMISSION	FEB. 20 2014	T.M.	WAG



exp Services Inc.
 T: +1.905.793.9800 | F: +1.905.793.0641
 1595 Clark Boulevard
 Brampton, ON L6T 4V1
 Canada
 www.exp.com

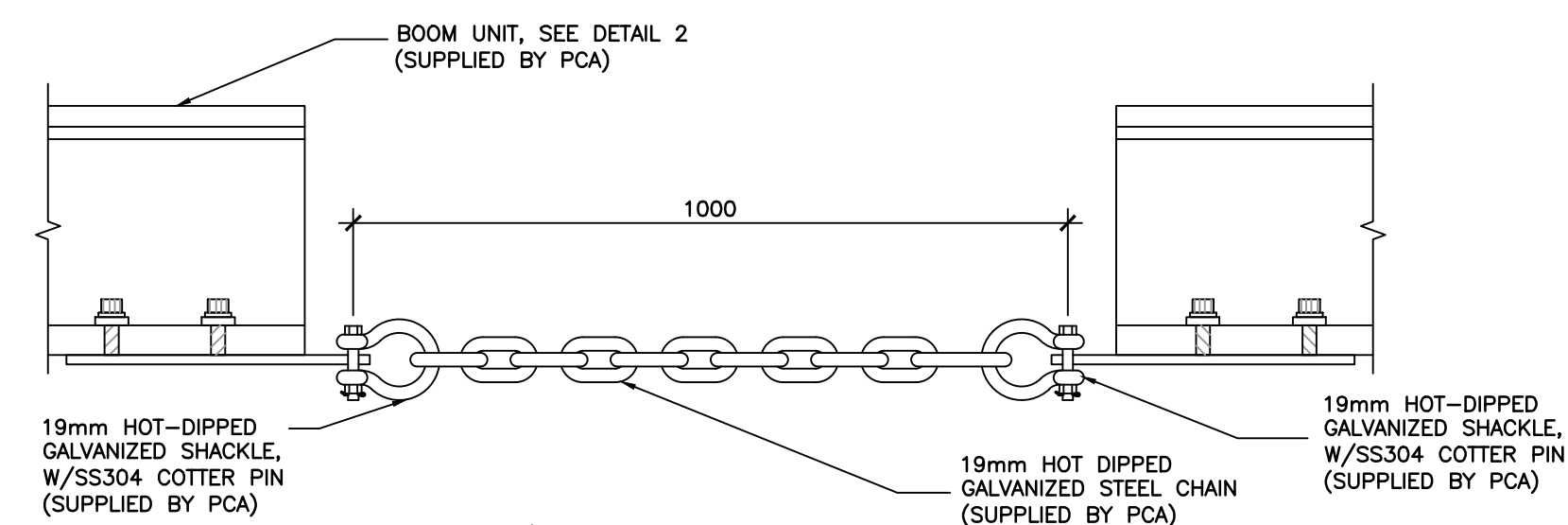
• BUILDINGS • EARTH & ENVIRONMENT • ENERGY •
 • INDUSTRIAL • INFRASTRUCTURE • SUSTAINABILITY •



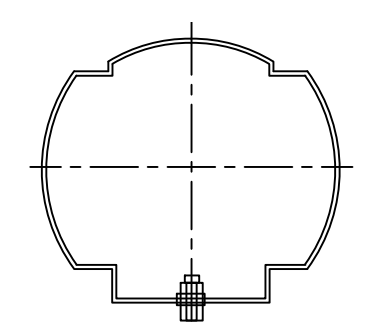
Location:
**15 MCGUIRE LANE, GLEN ROSS,
 SYDNEY TWP. QUINTE WEST, ONTARIO**

Title:
**GLEN ROSS DAM
 PROPOSED SAFETY BOOM**

CAD File: BRM00605127a GLE-02-RF	Base File:
Designed By: T.M.	Drawn By: T.M.
Scale: AS NOTED	Date: DECEMBER 2013
Dam No.: ---	Project No.: BRM00605127a
Checked By: W.A.G.	Drawing No.: GLE-02

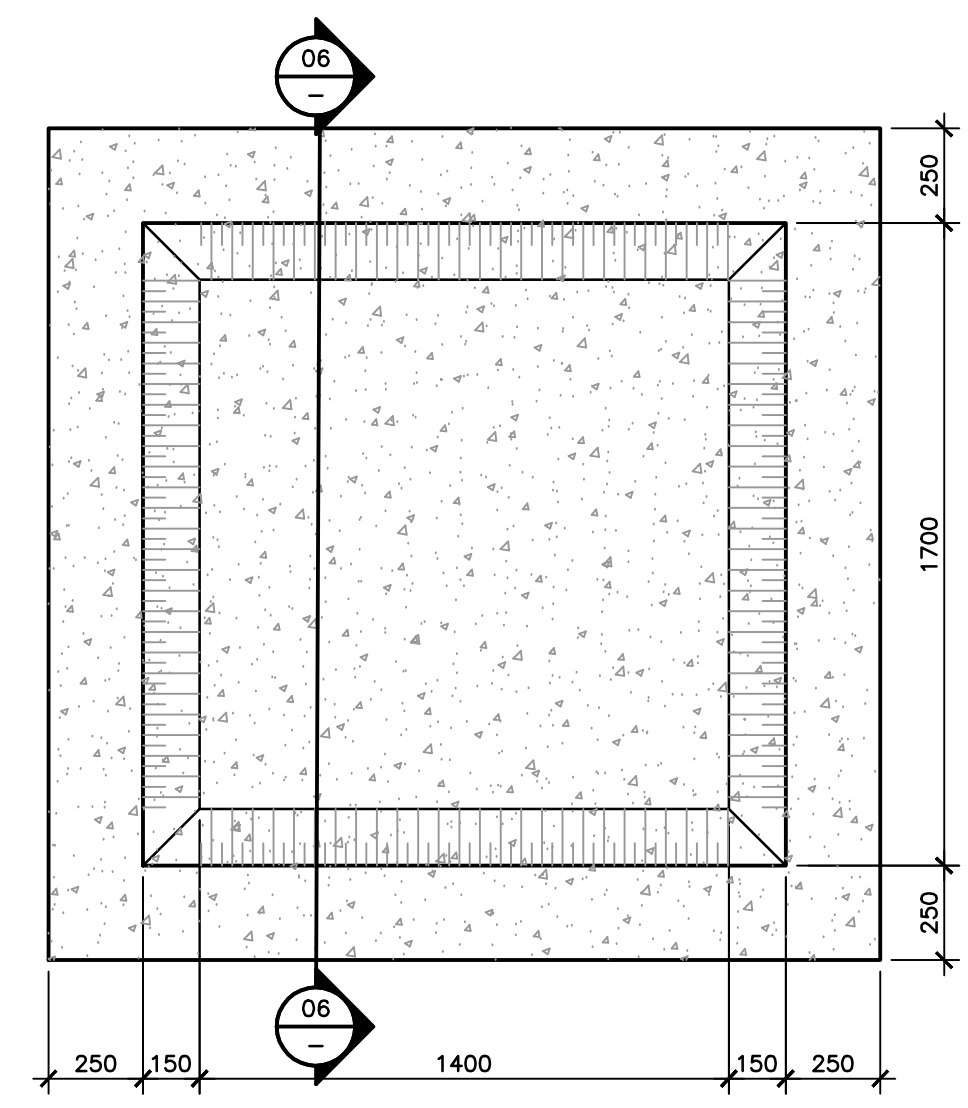


01 DETAIL
ELEVATION
SAFETY BOOM ASSEMBLY
SCALE 1:10

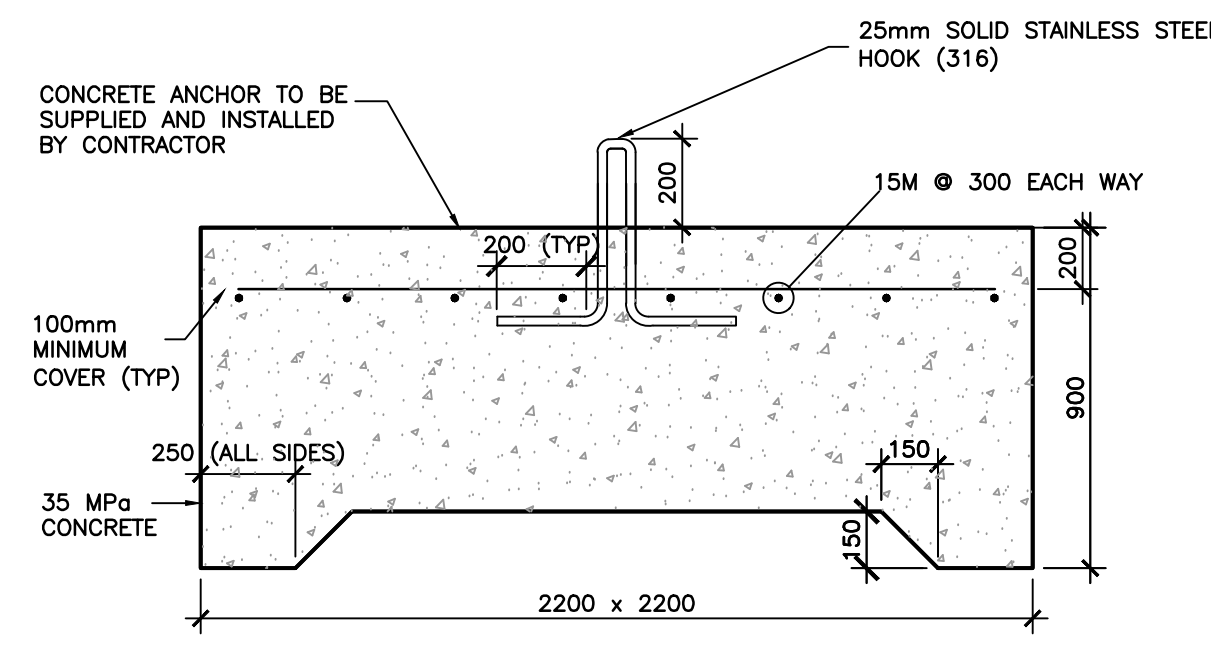


NAME: SAFETY BOOM FLOTATION UNIT
TYPE: INTERNAL FOAM FILL CORE
SHAPE: CYLINDRICAL
LENGTH: 3.0M +/- 0.3M EACH
DIAMETER: 0.4M +/- 0.5M EACH
GRAPHICS ON FRONT FACE OF ALL UNITS TO ALTERNATE BETWEEN:
◊ DANGER - DAM AHEAD - KEEP OUT ◊ AND
◊ DANGER - BARRAGE DEVANT - NE PAS APPROCHER ◊
GRAPHICS ON REAR FACE OF ALL UNITS TO BE:
Parcs Parks
Canada Canada
COLOUR: YELLOW (FS-13655)
SUPPLIED BY PCA

02 DETAIL - SECTION
BOOM FLOTATION UNIT
SCALE 1:10

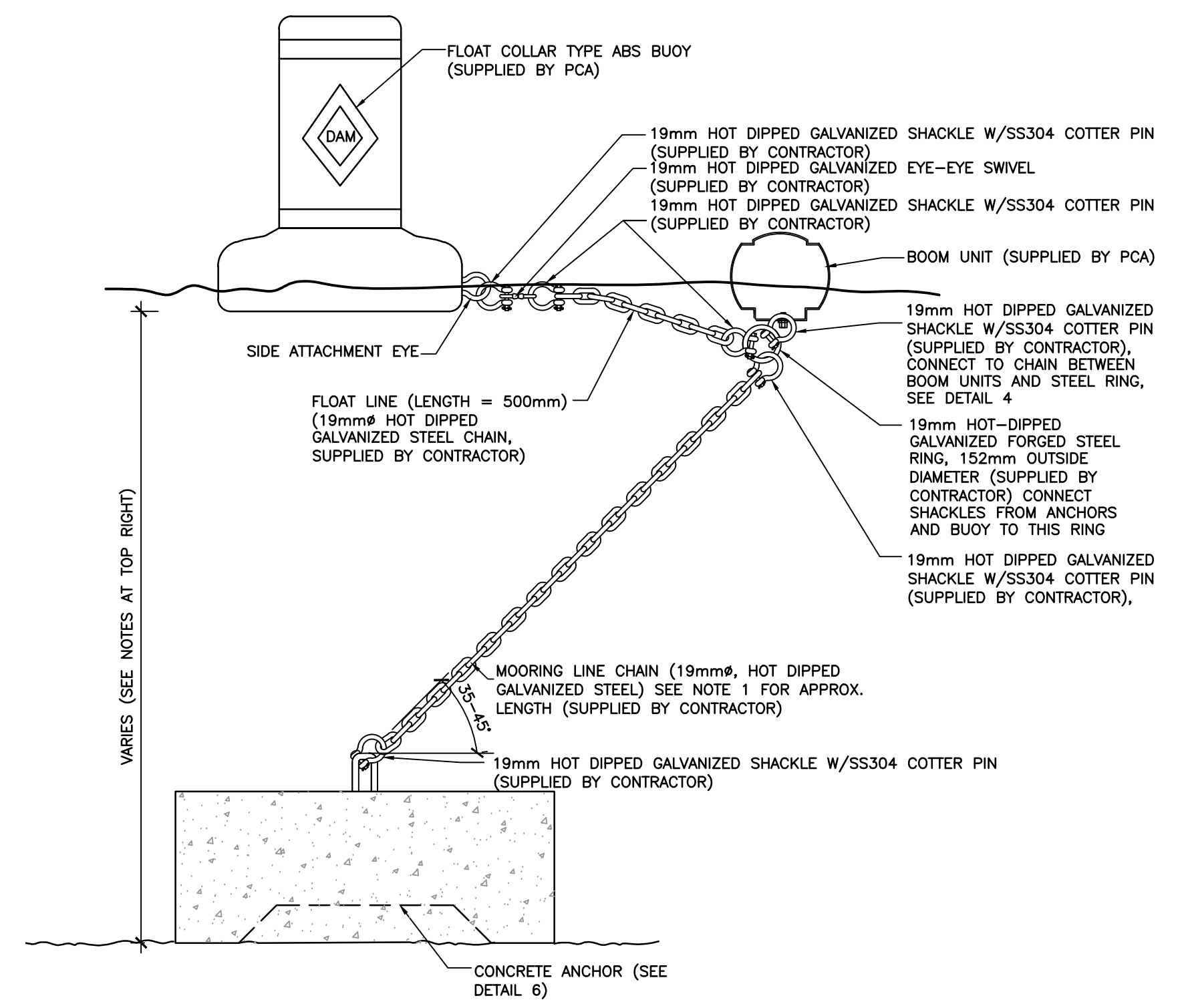


05 PLAN - UNDERSIDE OF ANCHOR
ANCHOR INVERTED SHOWING CAVITY AT BASE
SCALE 1:20

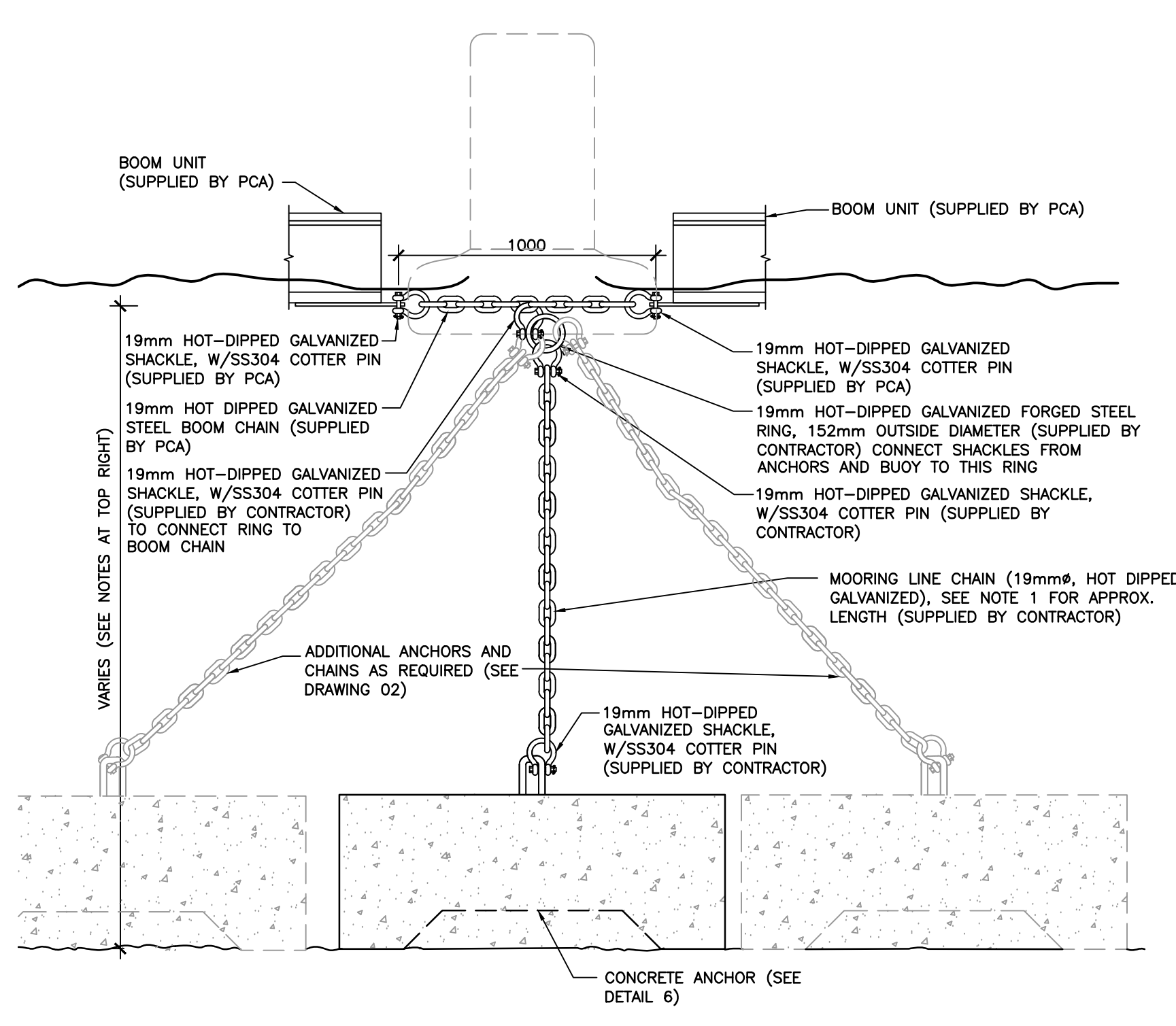


NOTE: PROVIDE CHAIN & CONNECTORS TO CONNECT FROM BASE TO BOOM WITH RIVER LEVEL AT 113.3m, AS PER DETAIL 3.

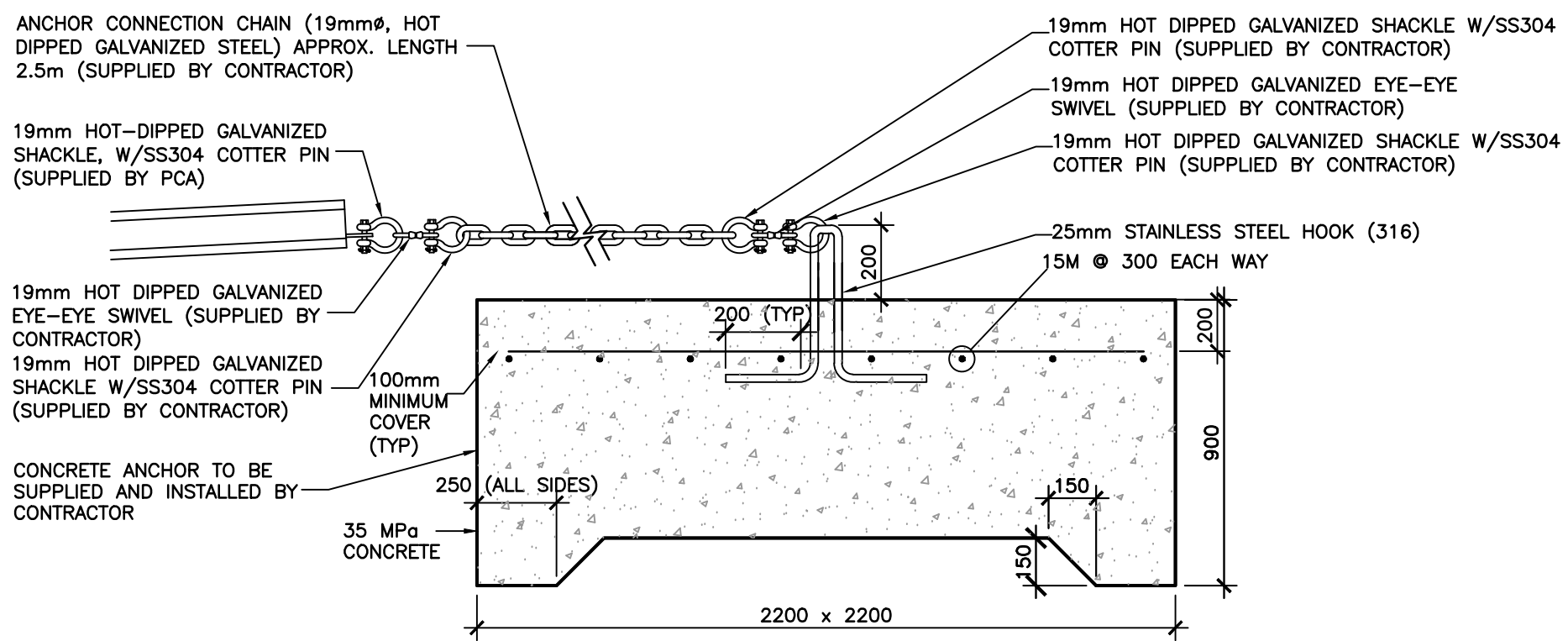
06 DETAIL - SECTION
CONCRETE ANCHOR - IN-WATER
SCALE 1:20



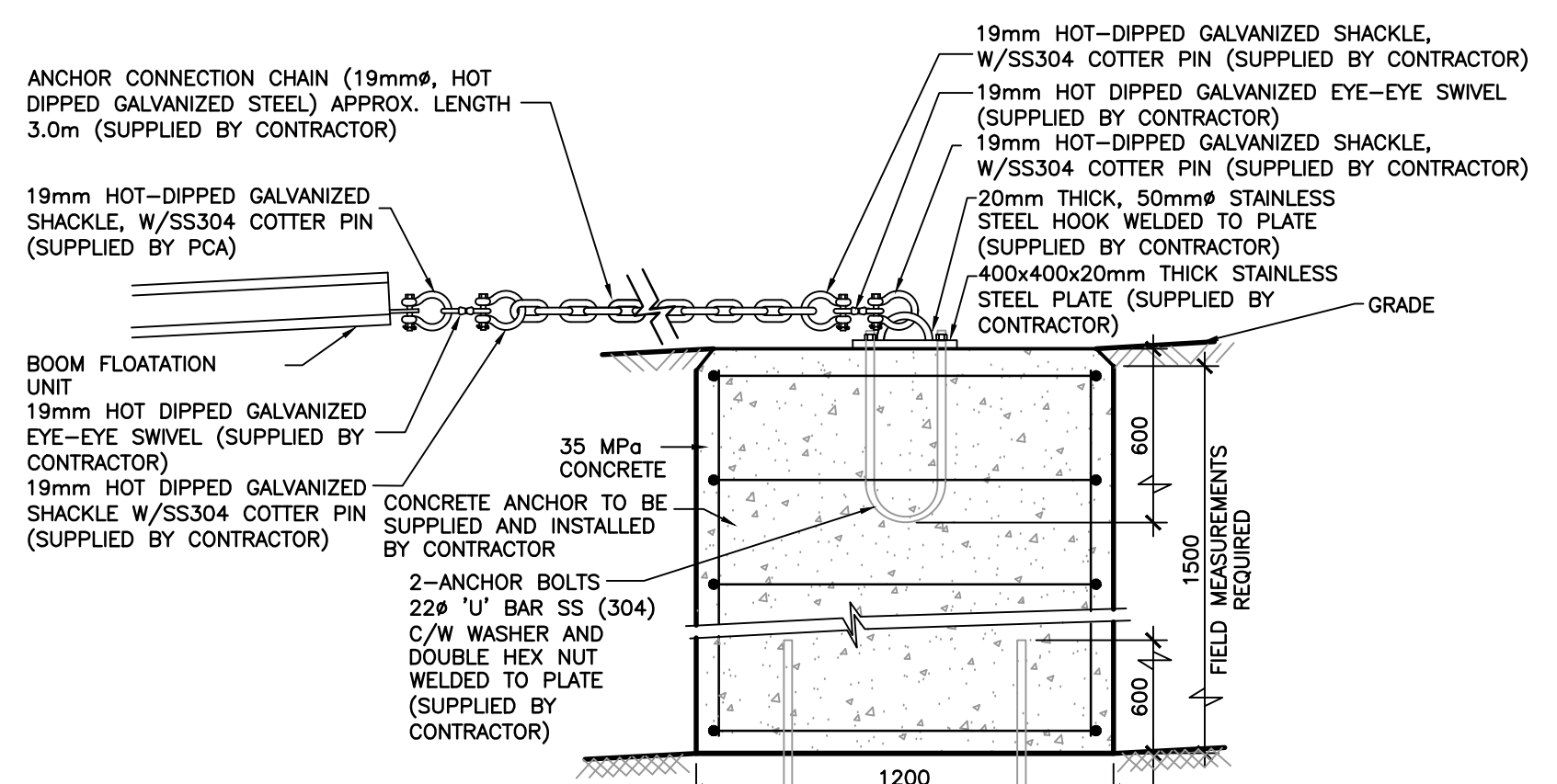
03 DETAIL
ANCHOR-SAFETY BOOM-BUOY CONNECTIONS
SCALE 1:20



04 DETAIL
ANCHOR-SAFETY BOOM CONNECTION
SCALE 1:20



07 ANCHOR 1 DETAIL - SECTION
CONCRETE BOOM ANCHOR AT SHORE
SCALE 1:20



08 ANCHOR 6 DETAIL
PLAN & SECTION
CONCRETE BOOM ANCHOR AT SHORE (BURIED)
SCALE N.T.S.

NOTES RE ANCHOR CHAIN LENGTHS
1. ANCHORS 2-5
WATER ELEVATION ~ 113.3m
ANCHOR 2 ~ ~110.8m AT BASE, LENGTH ~ 2.8M
ANCHOR 3 ~ ~110.7m AT BASE, LENGTH ~ 3.0M
ANCHOR 4 ~ ~110.7m AT BASE, LENGTH ~ 3.0M
ANCHOR 5 ~ ~110.8m AT BASE, LENGTH ~ 2.8M
2. WATER LEVEL VARIES. CONTRACTOR TO MEASURE WATER LEVEL PRIOR TO BOOM INSTALLATION AND ADJUST CHAIN ANGLE OF INCLINATION TO MATCH AS SHOWN ON DETAIL 3.

No.	REVISIONS	Date	By	App.
C	ISSUED FOR TENDER	FEB 10 2015	T.M.	WAG
B	ISSUED FOR 99% SUBMISSION	DEC 04 2014	T.M.	WAG
A	ISSUED FOR 66% SUBMISSION	SEPT 29 2014	T.M.	WAG



exp Services Inc.
t: +1.905.793.9800 | f: +1.905.793.0641
1595 Clark Boulevard
Brampton, ON L6T 4V1
Canada
www.exp.com

exp.

- BUILDINGS • EARTH & ENVIRONMENT • ENERGY •
- INDUSTRIAL • INFRASTRUCTURE • SUSTAINABILITY •

Owner/Client:
Parcs Canada Parks Canada

Canada

Location:
**15 MCGUIRE LANE, GLEN ROSS,
SYDNEY TWP. QUINTE WEST, ONTARIO**

Title:
**GLEN ROSS DAM SAFETY BOOM
MISCELLANEOUS DETAILS**

CAD File: BRM00605127a GLE-03-RB	Base File:
Designed By: T.M.	Drawn By: T.M.
Scale: AS NOTED	Date: JUNE 2014
Dam No.:	Project No.: BRM00605127a
Checked By: W.A.G.	Drawing No.: GLE-03