

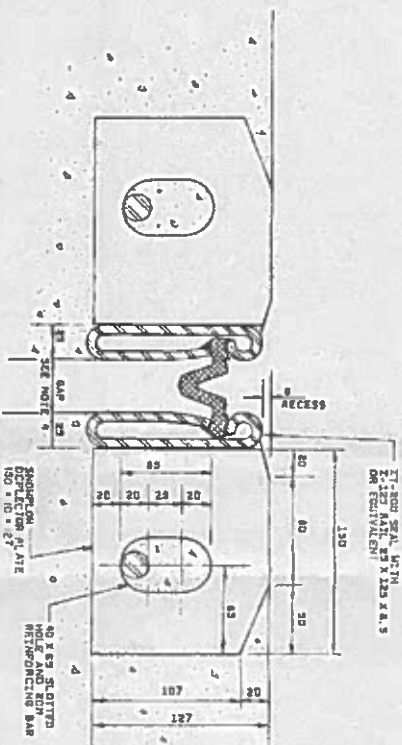
|                          |              |
|--------------------------|--------------|
| Designed by              | 6010         |
| Checked by               | 6010         |
| Examined by              | 6010         |
| Drawn by                 | 6010         |
| Described by             | P. H. DEPPEN |
| Checked by               | 6010         |
| Approved for order       | 6010         |
| Approved for office work | 6010         |

PROJ: 670-01  
SHEAL COVE BRIDGE  
HIGHWAY 430, km 24.1  
GROS POND NATIONAL PARK  
NEWFOUNDLAND

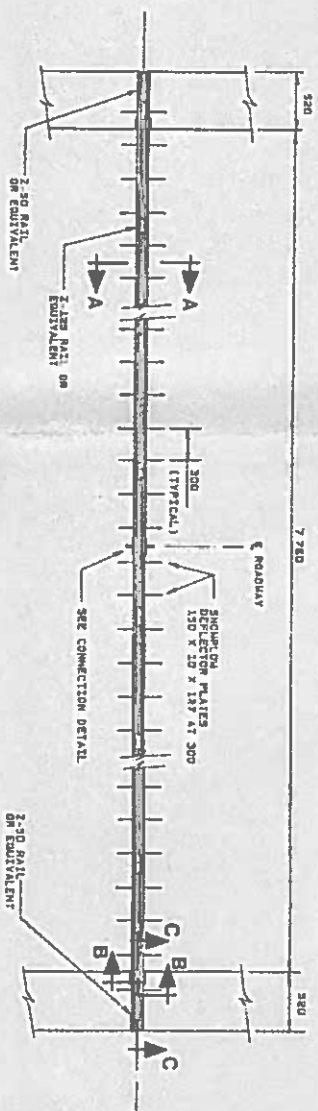
EXPANSION JOINTS  
DETAILS

RENOVATION -

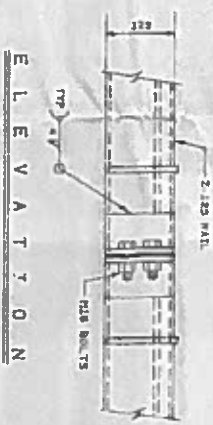
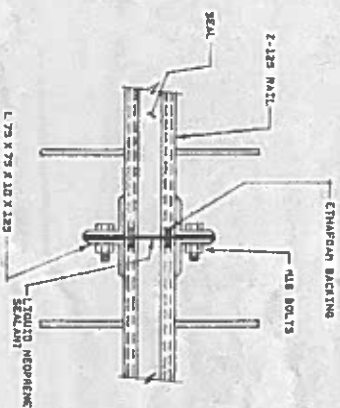
Project No. 730175  
drawing No. design No.  
SC3 OF 5



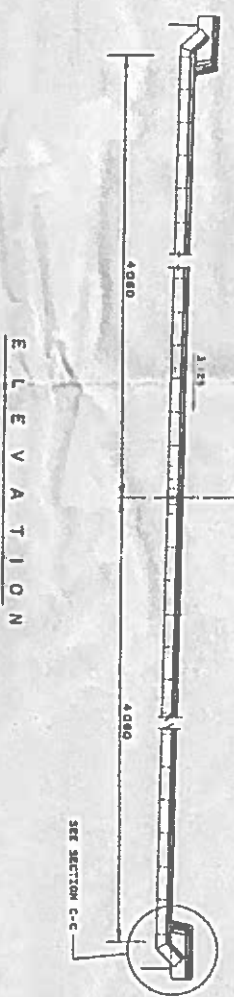
SECTION A-A  
SCALE 1 : 2



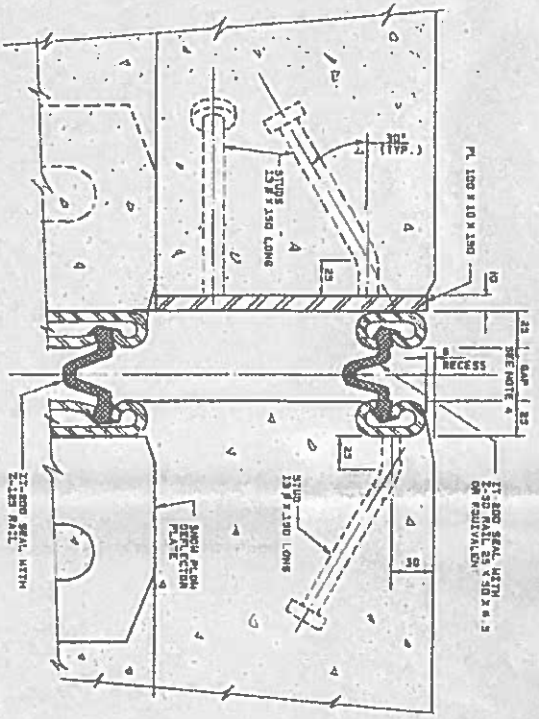
PLAN  
SCALE 1 : 2



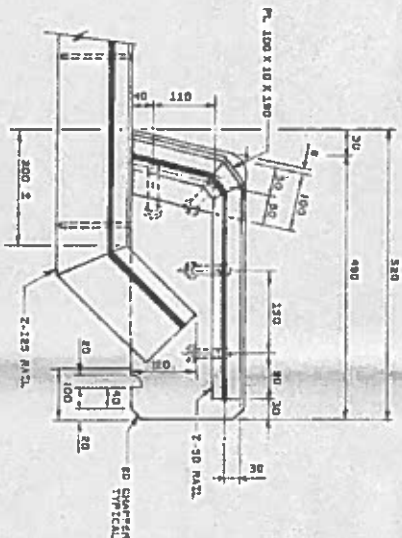
CONNECTION DETAIL  
SCALE 1 : 2



ELEVATION  
SCALE 1 : 2



SECTION B-B  
SCALE 1 : 2



SECTION C-C  
SCALE 1 : 2

NOTES

1. FOR GENERAL NOTES SEE DRAWING NO. SC1
2. SCALE AS SHOWN
3. SITE, FOR CURVE EXPANSION JOINTS TO CSA 600-21, GRADE SHALL TO BE GALVANIZED
4. ADJUSTMENT OF GAP AT INSTALLATION:
  1. GAP TO BE 30mm FOR EXPANSION JOINTS AS NOTED
  2. GAP TO BE 30mm FOR EXPANSION JOINTS AS NOTED
  3. INCREASE GAP BY 1mm FOR EACH 5°C DROP IN AMBIENT TEMPERATURE
5. SEE SECTION 01015 FOR SPEC. 5 FOR ACCEPTABLE EXPANSION JOINTS AND ADDITIONAL REQUIREMENTS