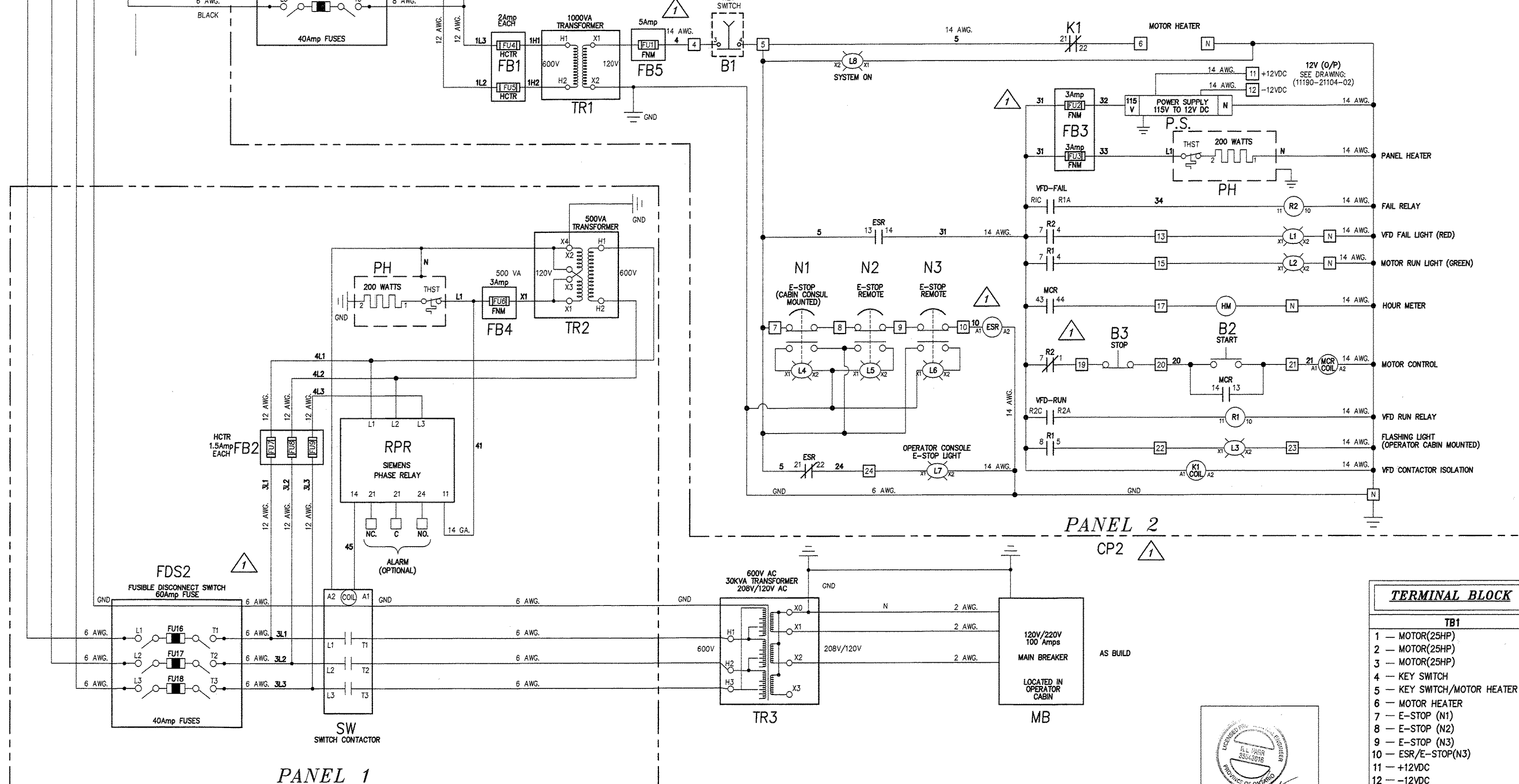


PARTS LIST						
ITEM	DESCRIPTION	A.P. P/N	MANUFACTURE P/N	MANUFACTURER	QTY./UNIT	RATING
MP	MALE PLUG	40-TD27	APJ648S	ARKITE	1	60Amp
DS	MAIN DISCONNECT SWITCH	40-0257-06	CH362DS	SQUARE D	1	100Amp
SP	SPLITTER (NEMA 4)	40-0157-01	FT3104SS	EEMAC	1	125Amp
TR1	TRANSFORMER	40-0363	9070T1000D5	SCHNEIDER	1	1000VA
TR2	TRANSFORMER	40-0364	9070T500D5	SCHNEIDER	1	500VA
TR3	TRANSFORMER (3 PHASE, 3 COIL, COPPER)	40-0365	CD3C0030VHA6XXB0	DELTA TRANSFORMER	1	30KVA
PH	PANEL HEATER (200W, 115V, 50/60Hz)	40-0211-02	DAH2001A	HOFFMAN	2	3.72Amp
K1	HYDRAULIC MOTOR CONTACTOR	40-0068	LC1D3201G6	SQUARE D	1	32Amp
B1	SYSTEM KEY SWITCH	40-0160-03	XB48G41	SCHNEIDER	1	10Amp
MCR	MASTER CONTROL RELAY	40-0288	CAD32G7	SCHNEIDER	1	10Amp
ESR	EMERGENCY STOP RELAY	40-0288	CAD32G7	SCHNEIDER	1	10Amp
M	MOTOR	40-TD01-04	PC4N025-5C-99	BROOK CROMPTON	1	24Amp
SW	SWITCH CONTACTOR	40-0094-01	LC1D6501G6	SQUARE D	1	65Amp
P.S.	POWER SUPPLY	PS3	S8VM-30012C	OMRON	1	27Amp
MB	MAIN BREAKER / LIGHT	TBA	TBA	TBA	1	100Amp
L1	VFD FAIL LIGHT (RED)	40-0120-06	XB48VG4	SCHNEIDER	1	-
L2	MOTOR RUN LIGHT (GREEN)	40-0130-07	XB48VG3	SCHNEIDER	1	-
L3	FLASHING LIGHT (AMBER)	40-0039	141-120	ELECTRAFLASH	1	0.06Amp
L4, L5, L6, L8	EMERGENCY STOP BUTTON/LIGHT (RED)	40-0200-04	XB48L845	SCHNEIDER	3	10Amp
RPR	PHASE RELAY	40-0366	3UG4513-1BR20	SIEMENS	1	5Amp
HM	HOURLY METER	40-0062	H7E1-NFV	OMRON	1	-
FB4, FB5	FUSE BLOCK (1 POLE)	40-0029-02	BM6031PQ	COOPER BUSSMANN	1	20Amp
FB1, FB3	FUSE BLOCK (2 POLE)	40-0029	BM6032PQ	COOPER BUSSMANN	2	20Amp
FB2	FUSE BLOCK (3 POLE)	40-0029-01	BM6033PQ	COOPER BUSSMANN	1	20Amp
FDS1	FUSIBLE DISCONNECT SWITCH	40-0257-06	GSA1AH420 GSA1AE21 GSA1GL3	SCHNEIDER	1	60Amp
FDS2	FUSIBLE DISCONNECT SWITCH	40-0257-06	GSA1AH420 GSA1AE21 GSA1GL3	SCHNEIDER	1	60Amp
FU1	"TRM" TIME DELAY FUSE OR EQUAL	40-0292-03	TRM5	FERRAZ SHAMMUT	1	5Amp
FU2, FU3, FU6	"TRM" TIME DELAY FUSE OR EQUAL	40-0292-02	TRM3	FERRAZ SHAMMUT	3	3Amp
FU4, FU5	"HCTR" TIME DELAY FUSE OR EQUAL	40-0292-01	ATDR2	B&B ELECTRONICS	2	27Amp
FU7, FU8, FU9	"HCTR" TIME DELAY FUSE OR EQUAL	40-0292-04	ATDR 1 1/2	EDISON	3	1.5Amp
FU10, FU11, FU12	DISCONNECT SWITCH FUSE	40-0258-01	LPS-RK-60SP	COOPER BUSSMANN	3	60Amp
FU13, FU14, FU15, FU16, FU17, FU18	DISCONNECT SWITCH FUSE	40-0258-02	JDL40	COOPER BUSSMANN	6	40Amp
CP1	CONTROL PANEL 1 (36" X 30" X 16")	40-0226-01	EUROBEX	5412ESS363016	1	NEMA4X
CP2	CONTROL PANEL 2 (24" X 20" X 10")	40-0226-02	EUROBEX	5412ESS242010	1	NEMA4X
B2	START	40-0254-06	XB48A31	SCHNEIDER	1	10Amp
B3	STOP	40-0254-07	XB48L42	SCHNEIDER	1	10Amp
VFD	VARIABLE FREQUENCY DRIVE	40-0138-06	ATV71HD22Y	SCHNEIDER	1	27Amp
	BRACKET	40-0138-07	VW3A1102	SCHNEIDER	1	-
	WIRE MOUNT	40-0138-08	VW3A1103	SCHNEIDER	1	-
	CABLE	40-0138-09	VW3A1104R10	SCHNEIDER	1	-
R1	MOTOR RUN RELAY	40-0093-01	LY3-AC120	OMRON	1	-
	SOCKET	40-0093-02	PTF11A	OMRON	1	-
	HOLD DOWN BRACKET	40-0093-03	PYC-A1	OMRON	1	-
R2	VFD RELAY	40-0093-01	LY3-AC120	OMRON	1	-
	SOCKET	40-0093-02	PTF11A	OMRON	1	-
	HOLD DOWN BRACKET	40-0093-03	PYC-A1	OMRON	1	-
L7	E-STOP LIGHT	40-0120-06	XB48VG4	SCHNEIDER	1	-
L8	SYSTEM ON LIGHT (GREEN)	40-0130-07	XB48VG3	SCHNEIDER	1	-



**ELECTRICAL STANDARDS:**  
 PANEL DESIGN TO:  
 -CAN/CSA CAN/CSA-C22.2 NO. 61029-2-9-06  
 -CSA-C22.2 NO.100-04 (R2009)  
 -CSA-C22.1-09

WIRE COLOUR CHART	
600V	BLACK WIRE
120V	RED WIRE
-12V	BROWN WIRE
+12V	BLUE WIRE
GND	GREEN WIRE
NEUTRAL	WHITE WIRE

TERMINAL BLOCK	
TERMINAL	DESCRIPTION
1	MOTOR(25HP)
2	MOTOR(25HP)
3	MOTOR(25HP)
4	KEY SWITCH
5	KEY SWITCH/MOTOR HEATER
6	MOTOR HEATER
7	E-STOP (N1)
8	E-STOP (N2)
9	E-STOP (N3)
10	ESR/E-STOP(N3)
11	+12VDC
12	-12VDC
13	OVER LOAD LIGHT (L1)
14	OVER LOAD LIGHT (L1)
15	MOTOR RUN (L2)
16	MOTOR RUN (L2)
17	HOURLY METER (HM)
18	HOURLY METER (HM)
19	STOP BUTTON (B3)
20	STOP BUTTON/START BUTTON
21	START BUTTON (B2)
22	FLASHING LIGHT (L3)
23	FLASHING LIGHT (L3)
24	E-STOP CONSOL (L7)
25	TR3
26	TR3
27	TR3
28	TR3
N	NEUTRAL

**LEGEND**  
 □ TERMINAL STRIP

REVISIONS					REQUEST #	REVISIONS					REQUEST #
REV	DESCRIPTION	DATE	INT.	CHK'D.	APP'D.	REV	DESCRIPTION	DATE	INT.	CHK'D.	APP'D.
1	ADDED WIRE# AND TABLE, UPDATED TERMINAL BLOCKS AND PARTS LIST.	APR. 18/12	S.S.	J.A.	[Signature]						

**ATLAS POLAR**  
 DELIVERING CUSTOMER SOLUTIONS SINCE 1938  
 HYDRORAKE SYSTEMS  
 60 NORTHLINE ROAD  
 TORONTO, ONTARIO M4B 3E5  
 CANADA  
 TEL. 416-751-7740 FAX. 416-751-2094  
 WWW.ATLASPOLAR.COM

DATE	DEC. 21/11	PUBLIC WORKS AND GOVERNMENT SERVICES CANADA TIMISKAMING DAM COMPLEX - QUEBEC DAM CONTROL DAM STOPLOG LIFTER ELECTRICAL SCHEMATIC	
DRAWN BY	TAN POPOVIC		
DESIGN CHECKED BY	S.L.R.		
MANUFACTURING CHECKED BY	[Signature]		
APPROVED BY	[Signature]	SIZE	D
		WEIGHT	
		DWG NO	11190-21104-01
		SCALE	N.T.S.
		SHEET	1 of 1
		REV	C

OUR POLICY IS ONE OF CONTINUOUS IMPROVEMENT AND WE RESERVE THE RIGHT TO ALTER ANY DETAIL OF OUR PRODUCT AT ANY TIME WITHOUT NOTICE.

THIS DOCUMENT CONTAINS INFORMATION PROPRIETARY TO ATLAS POLAR CO. LTD. AND SHALL NOT BE REPRODUCED OR TRANSFERRED TO OTHER DOCUMENTS OR DISCLOSED TO OTHERS OR USED FOR ANY PURPOSE OTHER THAN THAT FOR WHICH IT IS FURNISHED WITHOUT THE PRIOR WRITTEN PERMISSION OF ATLAS POLAR CO. LTD.