

ADDENDUM NO. 2	2015/03/20
ISSUED FOR TENDER	2014/12/19
Revision/Description/Description	Date/Date
Client/client	

PUBLIC WORKS AND GOVERNMENT SERVICES CANADA

Project title/Titre du projet
ESQUIMALT GRAVING DOCK
 825 ADMIRALS ROAD, VICTORIA, BC

ESQUIMALT GRAVING DOCK WATERLOT PHASE 2 SOUTH JETTY UNDER-PIER SEDIMENT REMEDIATION

Consultant Signature Only

Designed by/Concept par
MATT WOLTMAN

Drawn by/Dessiné par
CHRIS HEWETT

PWGSC Project Manager/Administrateur de Projets TPSCG
ANDREW MYLLY

Regional Manager, Environmental Services
COLLIN KINGMAN

Drawing title/Titre du dessin

EXISTING CONDITIONS AND GEOTECHNICAL INFORMATION

Project No./No. du projet	Sheet/	Revision no./
R.018400.002	C4	0

HORIZONTAL DATUM: UTM ZONE 10 GRID, NAD83.
 VERTICAL DATUM: CHART DATUM (C.D.)

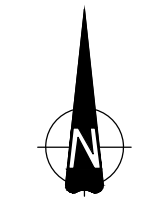
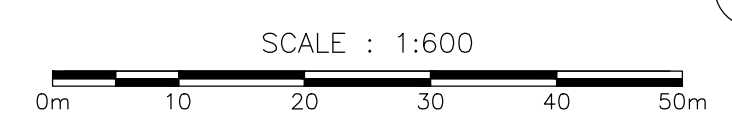
NOTES:

1. UNDERPIER AREA LOWER INTERTIDAL AND SUBTIDAL BATHYMETRY WITHIN THE TEMPORARY RE-SUSPENSION BARRIER CONTAINMENT AREA IS FROM FEBRUARY 2009, JUNE 2010 AND JANUARY 2011 CRA CANADA SURVEYS LTD. MULTI BEAM SURVEY. UPPER INTERTIDAL ELEVATIONS FROM SEPTEMBER 2009 AND JULY 2011 SURVEY BY FOCUS CORPORATION. OPEN WATER AREAS OUTSIDE OF THE TEMPORARY RE-SUSPENSION BARRIER CONTAINMENT AREA WERE DREDGED AS PART OF THE PHASE 1B OPEN-WATER REMEDIATION PROJECT. OPEN WATER BATHYMETRY SURVEY WAS CONDUCTED BY CRA CANADA SURVEYS INC. ON 2014/03/05 FOLLOWING COMPLETION OF PHASE 1B WORK.
2. BASE MAP FROM GOLDER, JANUARY 2012.
3. REFERENCE DWG C1 FOR DATUM INFORMATION.
4. SHEETPILE EXTENDS AROUND THE PERIMETER OF THE SOUTH JETTY (SEE SHEET PILE CONTRACT DRAWINGS ATTACHMENT IN THE APPENDIX).
5. CONTRACTOR TO CONFIRM LOCATIONS OF FIRE SPRINKLER OPENINGS AND CATWALK ACCESS HATCHES (SHOWN ON DWG S1) AND MAINTAIN ACCESS AT ALL TIMES.
6. EGD WORK SITE ALSO INCLUDES UPLAND AREAS OF THE EGD FACILITY AS SHOWN ON THE DRAWINGS AND DESCRIBED IN THE SPECIFICATIONS.
7. SEDIMENT CORE DATA FROM THE DETAILED SITE INVESTIGATION (GOLDER, FEBRUARY 2012), DATA REPORT LOCATED IN THE APPENDICES TO THE SPECIFICATIONS. GEOTECHNICAL INFORMATION IS AVAILABLE IN THE APPENDICES TO THE SPECIFICATIONS.
8. TUG BOAT WHARF LOCATION AND DIMENSIONS SURVEYED BY CRA CANADA SURVEYS INC. ON 2013/11/13. TUG BOAT WHARF TO BE RELOCATED ACCORDING TO THE SPECIFICATIONS.

PREVIOUS NOTE 4 DELETED

PLAN

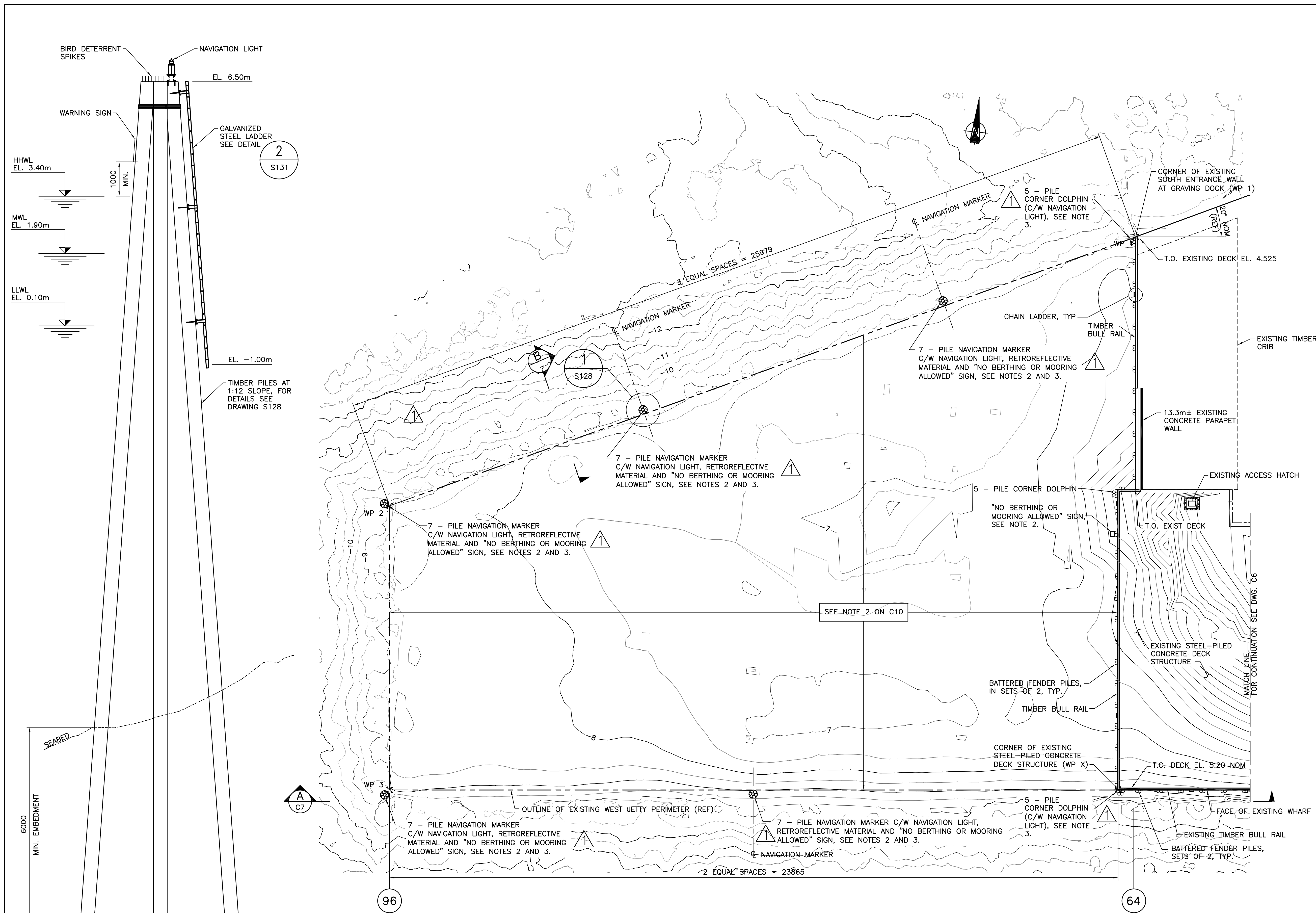
SCALE 1: 600



LEGEND:

- BATHYMETRY IN METRES
- - - - - TEMPORARY RE-SUSPENSION BARRIER CONTAINMENT AREA
- █ EXTENT OF EGD WORK SITE
- ▲ DIVER TRANSECTS
- + GOLDER 2009/2010 PUSH PROBE
- 2009/2010/2011/2012 GOLDER AND HISTORICAL SEDIMENT CORE LOCATIONS AND DESIGNATIONS
- ▲ HISTORICAL SEDIMENT GRAB SAMPLE LOCATIONS
- ▨ TIMBER PILED JETTY
- ▭ CONCRETE DECK WITH STEEL PILING
- ○ — ORDINARY HIGH WATER LINE
- - - - - EXISTING STRUCTURE

- EXPLORATION LOCATIONS**
- ▲ DIVER CORE (GOLDER)
 - BOREHOLE (GOLDER)
 - SEDIMENT CORE (GOLDER)
 - SONIC BOREHOLE (GOLDER)
 - + JET PROBE (GOLDER)
 - HISTORICAL SEDIMENT CORE
 - HISTORICAL SEDIMENT GRAB SAMPLE
 - ▲ ADDITIONAL SAMPLING (KLOHN CRIPPEN BERGER)



- NOTES:**
- FOR EXISTING CONDITIONS SEE DRAWINGS D1 AND D2.
 - WARNING SIGN SHALL BE SECURED TO FENDER PILES, NAVIGATION MARKER PILES OR FACE OF WHARF FACE APPROXIMATELY 1.0m ABOVE HIGH TIDE ELEVATION. SIGN SHALL BE MIN. 900mm WIDE x 600mm HIGH DURABLE MATERIAL AND SHALL STATE THE FOLLOWING IN BLACK FONT ON WHITE BACKGROUND: "NO BERTHING OR MOORING ALLOWED" "L'USAGE DE CE POSTE D'AMARRAGE EST INTERDIT". FONT TYPE AND SIZE SHALL BE AS APPROVED BY DEPARTMENTAL REPRESENTATIVE.
 - NAVIGATION LIGHTS SHALL BE SOLAR-POWERED MARINE LANTERNS WITH YELLOW FLASHING LIGHT OF FLASHING CHARACTER FL4s (FLO.5s Ec3.5s), AND WITH A MINIMUM VISUAL RANGE OF 3.0 NAUTICAL MILES (INTENTIONALLY SET HIGHER THAN CANADIAN COAST GUARD'S MINIMUM REQUIREMENT OF 2.0 NAUTICAL MILES TO ENSURE PERFORMANCE). NAVIGATION LIGHTS SHALL HAVE A MINIMUM BATTERY CHARGE LIFE OF 14 HOURS IN TOTAL DARKNESS AND A MINIMUM BATTERY REPLACEMENT LIFE OF 5 YEARS. SEE SPECIFICATIONS.

PLAN - WEST JETTY
1:250

WORK POINTS		
WP 1	N 5364863.011	E 468380.921
WP 2	N 5364817.446	E 468287.389
WP 3	N 5364780.766	E 468291.229
WP X	N 5364792.470	E 468405.450

Revision/	Description/Description	Date/Date
2	ADDENDUM NO. 2	2015/03/31
0	ISSUED FOR TENDER	2014/12/19

PUBLIC WORKS AND GOVERNMENT SERVICES CANADA

Project title/Titre du projet
ESQUIMALT GRAVING DOCK
825 ADMIRALS ROAD, VICTORIA, BC

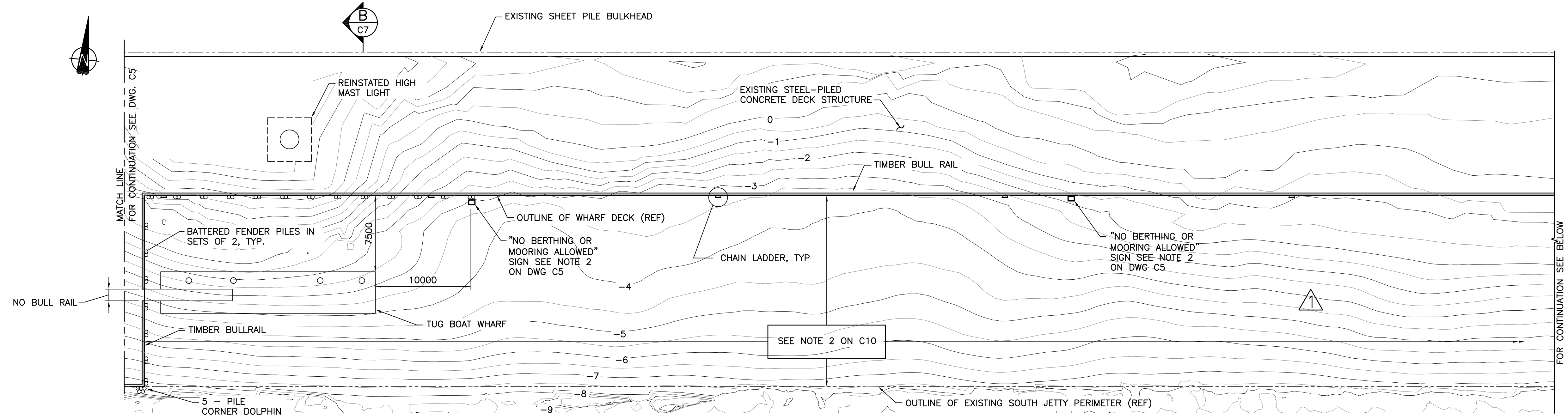
ESQUIMALT GRAVING DOCK WATERLOT PHASE 2 SOUTH JETTY UNDER-PIER SEDIMENT REMEDIATION

Consultant Signature Only

Designed by/Concept par
GEOFF COOPER
Drawn by/Dessiné par
ARNIE RIST
PWGSC Project Manager/Administrateur de Projets TPSGC
ANDREW MYLLY
Regional Manager, Environmental Services
COLLIN KINGMAN

Drawing title/Titre du dessin
WEST JETTY
GENERAL ARRANGEMENT
PLAN

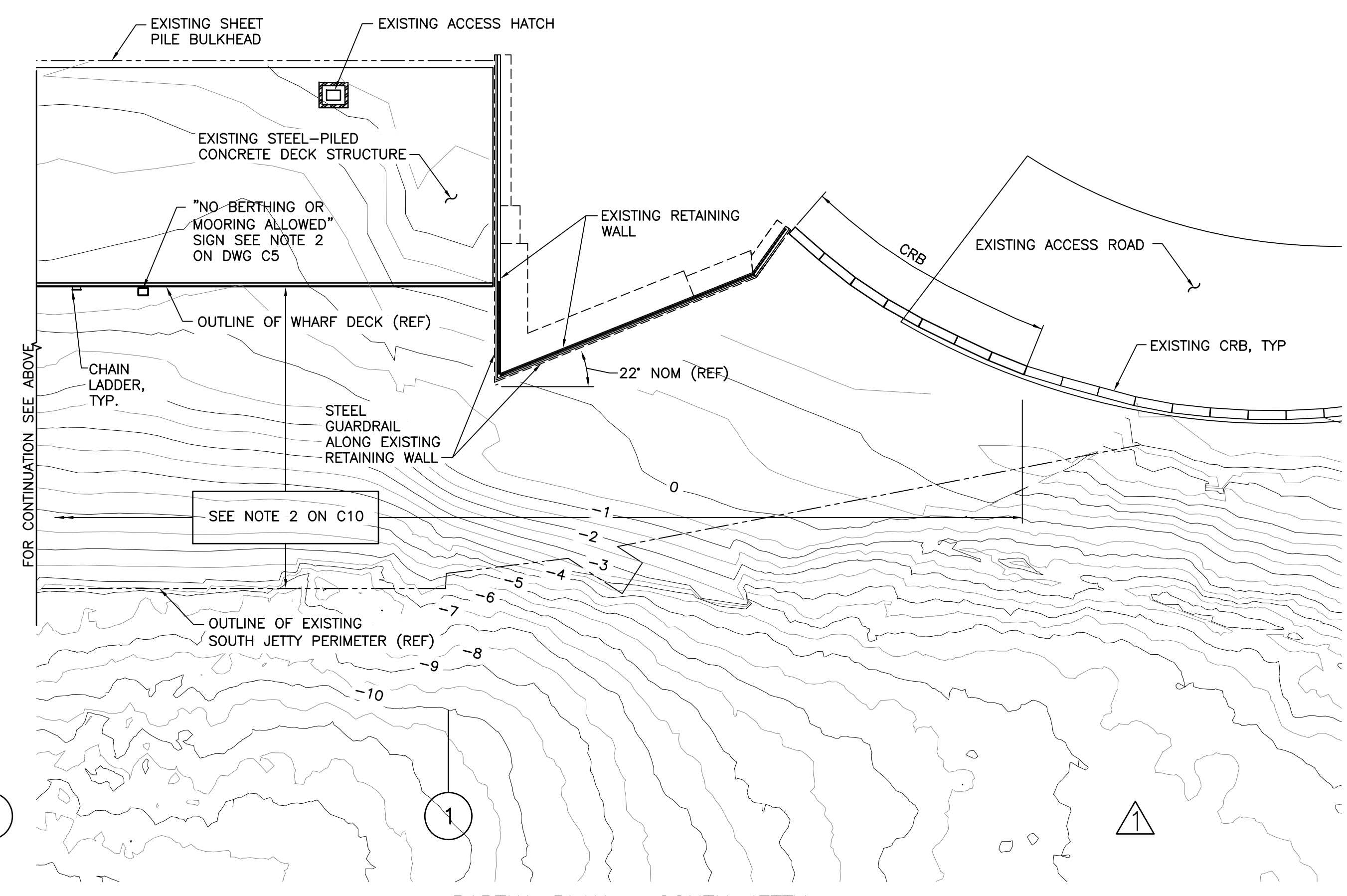
Project No./No. du projet	Sheet/	Revision no./
R.018400.002	C5	1



PARTIAL PLAN - SOUTH JETTY
1:250

58

12



PARTIAL PLAN - SOUTH JETTY
1:250

11

1

NOTES:

- FOR EXISTING CONDITIONS SEE DRAWINGS D1 AND D2.

ADDENDUM NO. 2	2015/03/20
ISSUED FOR TENDER	2014/12/19

Client/client
PUBLIC WORKS AND GOVERNMENT SERVICES CANADA

Project title/Titre du projet
**ESQUIMALT GRAVING DOCK
825 ADMIRALS ROAD, VICTORIA, BC**

**ESQUIMALT GRAVING DOCK
WATERLOT PHASE 2
SOUTH JETTY UNDER-PIER
SEDIMENT REMEDIATION**

Consultant Signature Only

Designed by/Concept par
GEOFF COOPER

Drawn by/Dessiné par
ARNIE RIST

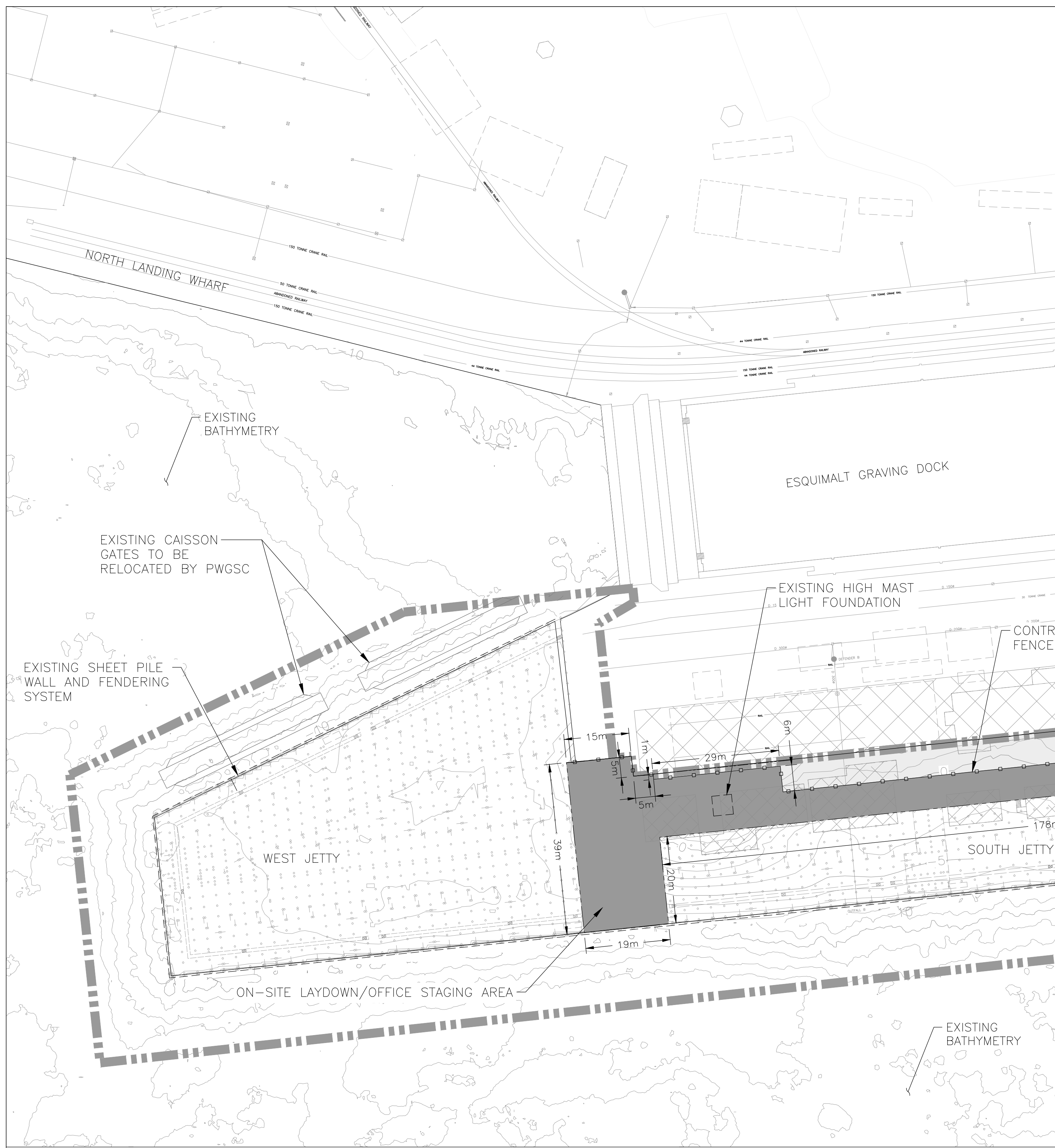
PWSC Project Manager/Administrateur de Projets TPSCG
ANDREW MYLLY

Regional Manager, Environmental Services
COLLIN KINGMAN

Drawing title/Titre du dessin

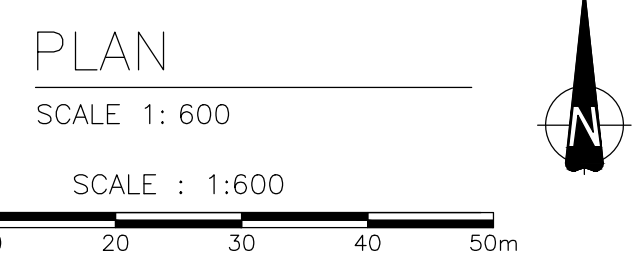
**SOUTH JETTY
GENERAL ARRANGEMENT
PLAN**

Project No./No. du projet R.018400.002	Sheet/ C6	Revision no./ 1
--	---------------------	---------------------------



HORIZONTAL DATUM: UTM ZONE 10 GRID, NAD83.
VERTICAL DATUM: CHART DATUM (C.D.)

PREVIOUS NOTE 4 DELETED



- LEGEND:**
- 14.0 — BATHYMETRY IN METRES
 - - - - - TEMPORARY RE-SUSPENSION BARRIER CONTAINMENT AREA
 - ■ ■ ■ ■ EXTENT OF EGD WORK SITE
 - ← PRIMARY CONTRACTOR ACCESS ROUTE
 - ■ ■ ■ ■ ON-SITE STAGING AREA (WITH CONCRETE DECK WITH STEEL PILING TO REMAIN, SEE NOTE 10)
 - ■ ■ ■ ■ STEEL-PILED CONCRETE
 - ▨ ▨ ▨ ▨ ▨ TIMBER PILING PRE-SOUTH JETTY DEMOLITION
 - ▨ ▨ ▨ ▨ ▨ EXISTING STRUCTURE (PARTIALLY LOCATED WITHIN STAGING AREA FOOTPRINT)
 - ▨ ▨ ▨ ▨ ▨ TEMPORARY LOAD LIMIT AREA
 - ORDINARY HIGH WATER LINE
 - CONTRACTOR FENCE LINE

- NOTES:**
1. UNDERPIER AREA LOWER INTERTIDAL AND SUBTIDAL BATHYMETRY WITHIN THE TEMPORARY RE-SUSPENSION BARRIER CONTAINMENT AREA IS FROM FEBRUARY 2009, JUNE 2010 AND JANUARY 2011 CRA CANADA SURVEYS LTD. MULTI BEAM SURVEY. UPPER INTERTIDAL ELEVATIONS FROM SEPTEMBER 2009 AND JULY 2011 SURVEY BY FOCUS CORPORATION. OPEN WATER AREAS OUTSIDE OF THE TEMPORARY RE-SUSPENSION BARRIER CONTAINMENT AREA WERE DREDGED AS PART OF THE PHASE 1B OPEN-WATER REMEDIATION PROJECT. OPEN WATER BATHYMETRY SURVEY WAS CONDUCTED BY CRA CANADA SURVEYS INC. ON 2014/03/05 FOLLOWING COMPLETION OF PHASE 1B WORK.
 2. BASE MAP FROM GOLDER, JANUARY 2012.
 3. REFERENCE DWG C1 FOR DATUM INFORMATION.
 4. SHEET PILE EXTENDS AROUND THE PERIMETER OF SOUTH JETTY. SEE SHEET PILE CONTRACT DRAWINGS ATTACHMENT IN THE APPENDICES.
 5. CONTRACTOR TO CONFIRM LOCATIONS OF FIRE SPRINKLER OPENINGS AND CATWALK ACCESS HATCHES AND MAINTAIN ACCESS AT ALL TIMES.
 6. EGD WORK SITE ALSO INCLUDES UPLAND AREAS OF THE EGD FACILITY AS SHOWN ON THE DRAWINGS AND DESCRIBED IN THE SPECIFICATIONS.
 7. TUG BOAT WHARF LOCATION AND DIMENSIONS SURVEYED BY CRA CANADA SURVEYS ON 2013/11/13. TUG BOAT WHARF TO BE RELOCATED ACCORDING TO THE SPECIFICATIONS.
 8. ACCESS FROM WATER AS APPROVED BY QUEEN'S HARBOUR MASTER.
 9. CONTRACTOR SHALL PROVIDE A 12.2-METRE BY 6.1-METRE (APPROXIMATELY 74m²) AREA WITHIN THE CONTRACTOR STAGING AREA FOR THE DEPARTMENTAL REPRESENTATIVE'S CONSULTANT TEAM TRAILER AT THE REQUEST OF THE DEPARTMENTAL REPRESENTATIVE.
 10. CONTRACTOR SHALL NOT OBSTRUCT BUILDING ACCESS ADJACENT TO THE CONTRACTOR ON-SITE STAGING AREA.

Revision/Revision	Description/Description	Date/Date
0	ISSUED FOR TENDER	2014/12/19
ADDENDUM NO. 2		2015/03/20

PUBLIC WORKS AND GOVERNMENT SERVICES CANADA

Project title/Titre du projet
**ESQUIMALT GRAVING DOCK
825 ADMIRALS ROAD, VICTORIA, BC**

**ESQUIMALT GRAVING DOCK
WATERLOT PHASE 2
SOUTH JETTY UNDER-PIER
SEDIMENT REMEDIATION**

Consultant Signature Only

Designed by/Concept par
MATT WOLTMAN

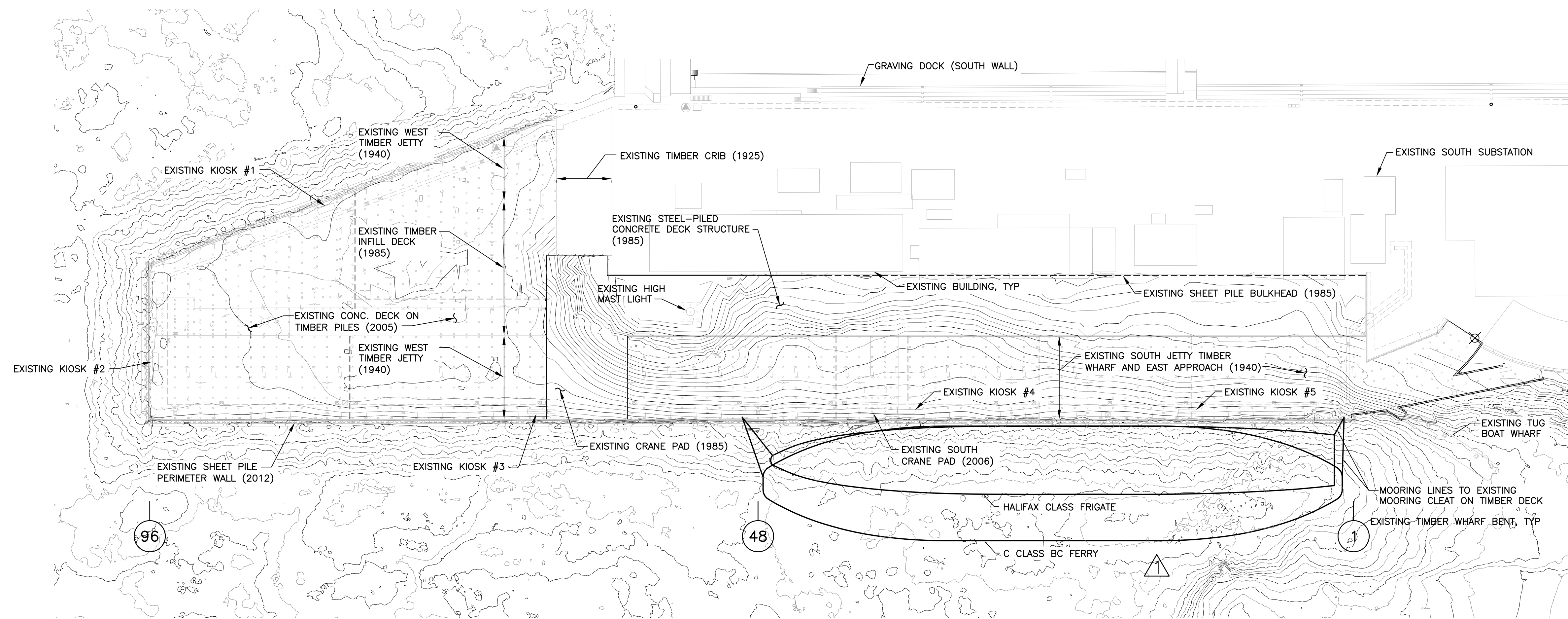
Drawn by/Dessiné par
CHRIS HEWETT

PWSC Project Manager/Administrateur de Projets TPSCG
ANDREW MYLLY

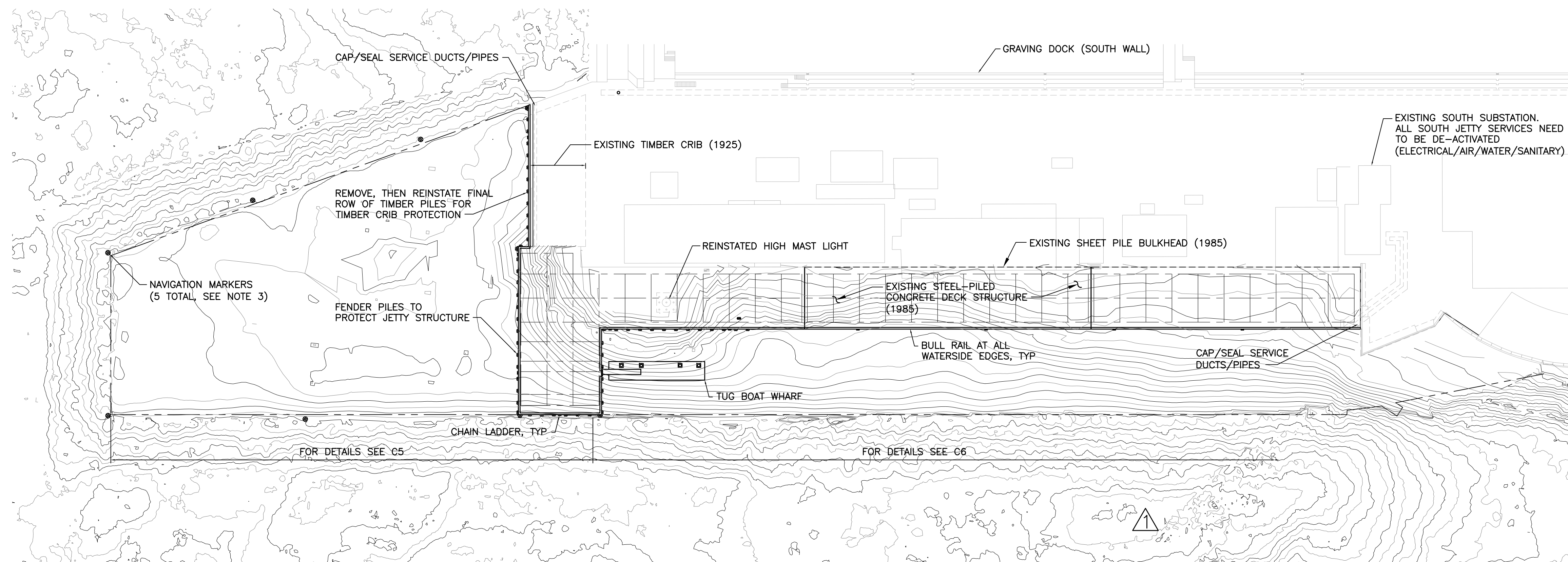
Regional Manager, Environmental Services
COLLIN KINGMAN

Drawing title/Titre du dessin
**CONTRACTOR'S WORK AREA
AND SITE ACCESS**

Project No./No. du projet	Sheet/	Revision no./
R.018400.002	C8	0



EXISTING SOUTH JETTY GENERAL LAYOUT
1:600



MODIFIED SOUTH JETTY GENERAL LAYOUT
1:600

NOTES:

1. VERTICAL DATUM: CHART DATUM.
2. THE BATHYMETRY SHOWN IS BASED ON EXISTING CONDITIONS. THE MODIFIED BATHYMETRY WITHIN THE EXISTING SOUTH JETTY FOOTPRINT FOLLOWING DREDGING AND CAPPING WILL GENERALLY BE AT OR BELOW THE BATHYMETRY ELEVATIONS SHOWN.
3. NAVIGATION MARKERS ARE INTENDED TO INDICATE THE NAVIGATION CHANNEL AND ARE NOT DESIGNED TO BE BERTHING OR TURNING DOLPHINS.



Revision/Revision	Description/Description	Date/Date
△	ADDENDUM NO. 2	2015/03/20
0	ISSUED FOR TENDER	2014/12/19

Client/client
PUBLIC WORKS AND GOVERNMENT SERVICES CANADA

Project title/Titre du projet
**ESQUIMALT GRAVING DOCK
825 ADMIRALS ROAD, VICTORIA, BC**

**ESQUIMALT GRAVING DOCK
WATERLOT PHASE 2
SOUTH JETTY UNDER-PIER
SEDIMENT REMEDIATION**

Consultant Signature Only

Designed by/Concept par
GEOFF COOPER
Drawn by/Dessiné par
ARNIE RIST
PWSC Project Manager/Administrateur de Projets TPSC
ANDREW MYLLY
Regional Manager, Environmental Services
COLLIN KINGMAN
Drawing title/Titre du dessin

**SOUTH JETTY EXISTING
AND MODIFIED PLANS**

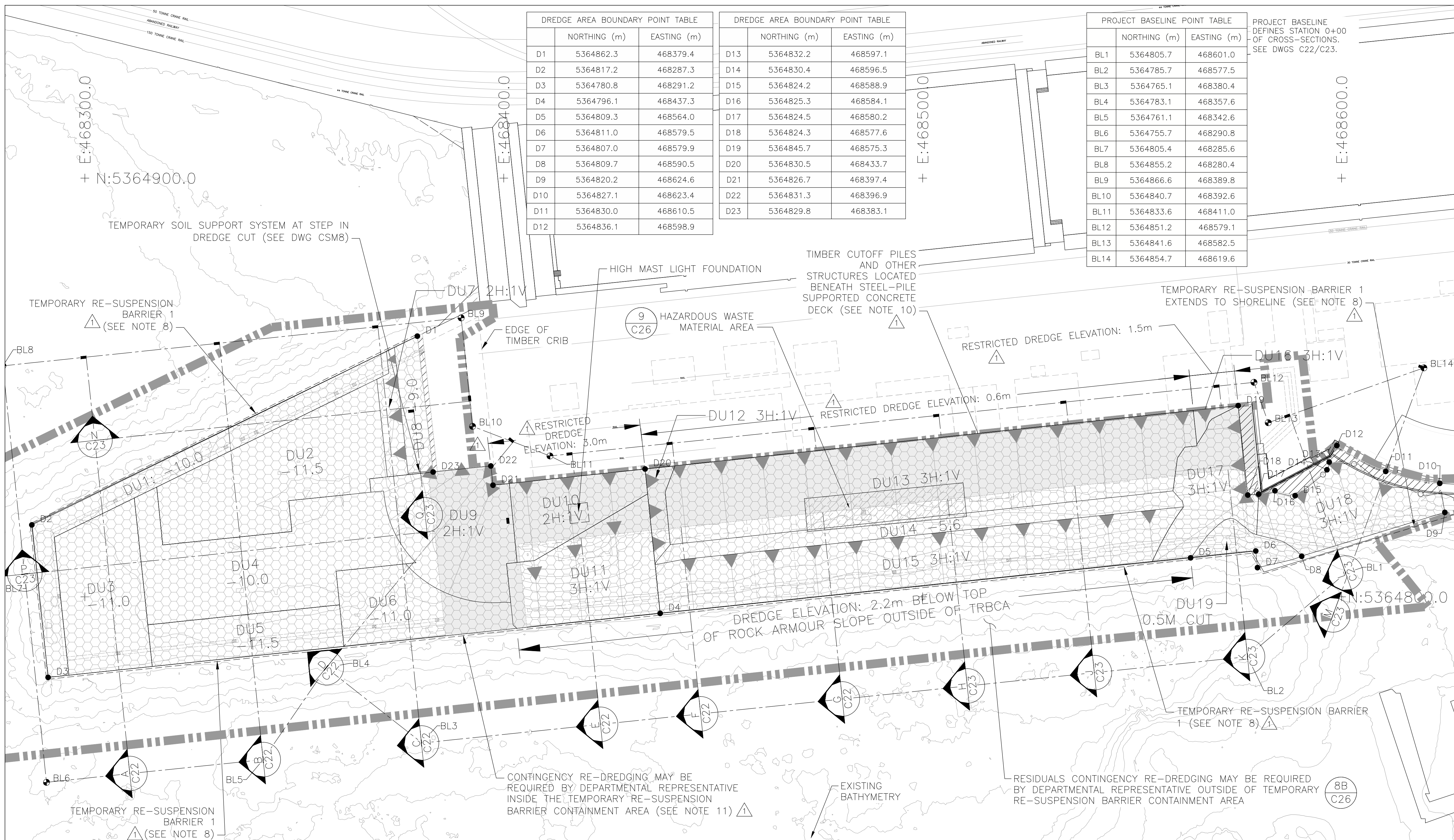
Project No./No. du projet R.018400.002	Sheet/ C10	Revision no./ 1
--	----------------------	---------------------------



DREDGE AREA BOUNDARY POINT TABLE			DREDGE AREA BOUNDARY POINT TABLE		
	NORTHING (m)	EASTING (m)		NORTHING (m)	EASTING (m)
D1	5364862.3	468379.4	D13	5364832.2	468597.1
D2	5364817.2	468287.3	D14	5364830.4	468596.5
D3	5364780.8	468291.2	D15	5364824.2	468588.9
D4	5364796.1	468437.3	D16	5364825.3	468584.1
D5	5364809.3	468564.0	D17	5364824.5	468580.2
D6	5364811.0	468579.5	D18	5364824.3	468577.6
D7	5364807.0	468579.9	D19	5364845.7	468575.3
D8	5364809.7	468590.5	D20	5364830.5	468433.7
D9	5364820.2	468624.6	D21	5364826.7	468397.4
D10	5364827.1	468623.4	D22	5364831.3	468396.9
D11	5364830.0	468610.5	D23	5364829.8	468383.1
D12	5364836.1	468598.9			

PROJECT BASELINE POINT TABLE		
	NORTHING (m)	EASTING (m)
BL1	5364805.7	468601.0
BL2	5364785.7	468577.5
BL3	5364765.1	468380.4
BL4	5364783.1	468357.6
BL5	5364761.1	468342.6
BL6	5364755.7	468290.8
BL7	5364805.4	468285.6
BL8	5364855.2	468280.4
BL9	5364866.6	468389.8
BL10	5364840.7	468392.6
BL11	5364833.6	468411.0
BL12	5364851.2	468579.1
BL13	5364841.6	468582.5
BL14	5364854.7	468619.6

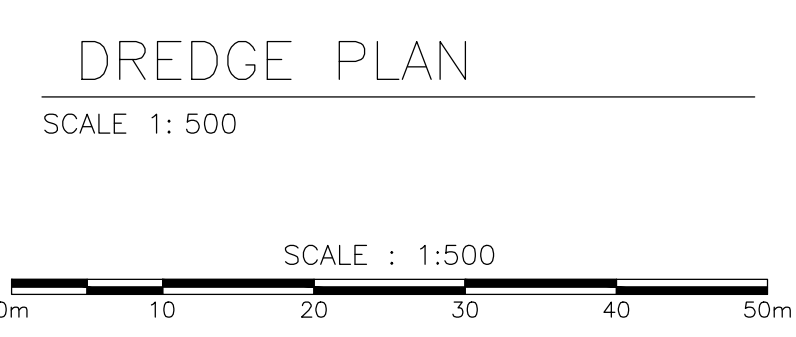
PROJECT BASELINE DEFINES STATION 0+00 OF CROSS-SECTIONS. SEE DWGS C22/C23.



HORIZONTAL DATUM: UTM ZONE 10 GRID, NAD83.
 VERTICAL DATUM: CHART DATUM (C.D.)

NOTES:

- UNDERPIER AREA LOWER INTERTIDAL AND SUBTIDAL BATHYMETRY WITHIN THE TEMPORARY RE-SUSPENSION BARRIER CONTAINMENT AREA IS FROM FEBRUARY 2009, JUNE 2010 AND JANUARY 2011 CRA CANADA SURVEYS LTD. MULTI BEAM SURVEY. UPPER INTERTIDAL ELEVATIONS FROM SEPTEMBER 2009 AND JULY 2011 SURVEY BY FOCUS CORPORATION. OPEN WATER AREAS OUTSIDE OF THE TEMPORARY RE-SUSPENSION BARRIER CONTAINMENT AREA WERE DREDGED AS PART OF THE PHASE 1B OPEN-WATER REMEDIATION PROJECT. OPEN WATER BATHYMETRY SURVEY WAS CONDUCTED BY CRA CANADA SURVEYS INC. ON 2014/03/05 FOLLOWING COMPLETION OF PHASE 1B WORK. CONTRACTOR SHALL ALSO COMPLETE PRE-CONSTRUCTION SURVEY TO MEET BATHYMETRY DATA COLLECTION REQUIREMENTS AS DESCRIBED IN SECTION 02 21 13 - SURVEYING AND POSITIONING CONTROL.
- BASE MAP FROM GOLDER, JANUARY 2012.
- REFERENCE DWG C1 FOR DATUM INFORMATION.
- EGD WORK SITE ALSO INCLUDES UPLAND AREAS OF THE EGD FACILITY AS SHOWN ON THE DRAWINGS AND DESCRIBED IN THE SPECIFICATIONS.
- CONTRACTOR SHALL COMPLETE DREDGING ACTIVITIES ACCORDING TO SEQUENCING REQUIREMENTS SHOWN ON DRAWINGS AND DESCRIBED IN THE SPECIFICATIONS.
- SEE APPENDIX D REFERENCE DRAWINGS FOR A COMPLETE LIST OF CONTROL POINTS USED TO DEFINE EXTENTS OF DREDGING FOR DREDGE UNITS. CONTRACTOR SHALL TRANSITION DREDGE CUTS FROM THESE EXTENTS TO THE EGD WORK SITE BOUNDARY AS SHOWN ON THE DRAWINGS.
- DREDGE SURFACE 0.5m WITHIN HAZARDOUS WASTE AREA (DU13) AND DISPOSE OF MATERIAL AS HAZARDOUS WASTE. PWSC TO SAMPLE TO DETERMINE WHETHER UNDERLYING MATERIAL IS HAZARDOUS WASTE. COMPLETE DREDGING TO ELEVATIONS AND GRADES. UNIT PRICE TABLE ASSUMES OTHER MATERIAL REMOVED TO ACHIEVE THE ELEVATIONS WILL BE DISPOSED AS IL+ MATERIAL.
- TRB LOCATIONS SHOWN AS EXAMPLE ONLY. CONTRACTOR (AND 3RD PARTY VENDOR) SHALL DESIGN, INSTALL AND MAINTAIN TRBS IN ACCORDANCE WITH THE SPECIFICATIONS. CONTRACTOR TO PROVIDE TRB LAYOUT AND DESIGN DETAILS IN THE ENVIRONMENTAL PROTECTION PLAN. OPEN PILES ARE PRESENT BENEATH SOUTH JETTY DECK POSE HEALTH AND SAFETY RISK. CONTRACTOR TO IDENTIFY IN HEALTH AND SAFETY PLAN APPROPRIATE RISK MITIGATION MEASURES THAT WILL BE IMPLEMENTED AT THESE LOCATIONS.
- SEE DWGS C14, C15, AND D6. TIMBER PILES AND/OR OLD NON-FUNCTIONAL VERTICAL STRUCTURES INCLUDING BROKEN TIMBER PILES OR BROKEN STRUCTURAL ELEMENTS ARE PRESENT BENEATH THE STEEL-PILE SUPPORTED CONCRETE DECK IN DREDGE UNITS 6, 9, 10, 11, 12, 13, 16, AND 17. REMOVE TIMBER CUTOFF PILES AND OTHER STRUCTURES ENCOUNTERED DURING DREDGING IN ACCORDANCE WITH THE SPECIFICATIONS.
- CONTINGENCY RE-DREDGING MAY BE REQUIRED FOR MISSED INVENTORY OR RESIDUALS MATERIAL REMOVAL WITHIN THE TEMPORARY RE-SUSPENSION BARRIER CONTAINMENT AREA OF WORK AND FOR POTENTIAL RESIDUALS REMOVAL OUTSIDE OF THE TEMPORARY RE-SUSPENSION BARRIER CONTAINMENT AREA IF RESULTS OF CONFIRMATIONAL SAMPLING INDICATE DREDGE RESIDUALS ARE PRESENT AT THE SEABED SURFACE. SEE DETAIL 8A AND 8B, DWG C26.



- LEGEND:**
- 14.0--- BATHYMETRY IN METRES
 - EGD WORK SITE BOUNDARY
 - TEMPORARY RE-SUSPENSION BARRIER CONTAINMENT AREA
 - ORDINARY HIGH WATER LINE
 - DU4 -11.0 DREDGE UNIT BOUNDARY AND DREDGE ELEVATION
 - DU10 2H:1V SLOPE DREDGING DREDGE UNIT (DU) BOUNDARY AND GRADE
 - ▲ SLOPE DESIGNATION
 - ▨ DREDGE AREA
 - ▨ DREDGE AREA UNDER STEEL-PILE SUPPORTED CONCRETE DECK
 - ▨ HAZARDOUS WASTE MATERIAL AREA
 - ▨ NO DREDGE AREA
 - BASE LINE CONTROL POINT
 - DREDGE AREA CONTROL POINT

Revision/Revision	Description/Description	Date/Date
0	ISSUED FOR TENDER	2014/12/19
1	ADDENDUM NO. 2	2015/03/20

PUBLIC WORKS AND GOVERNMENT SERVICES CANADA

Project title/Titre du projet
ESQUIMALT GRAVING DOCK
825 ADMIRALS ROAD, VICTORIA, BC

ESQUIMALT GRAVING DOCK WATERLOT PHASE 2 SOUTH JETTY UNDER-PIER SEDIMENT REMEDIATION

Consultant Signature Only

Designed by/Concept par
MATT WOLTMAN

Drawn by/Dessiné par
CHRIS HEWETT

PWSC Project Manager/Administrateur de Projets TPSCG
ANDREW MYLLY

Regional Manager, Environmental Services
COLLIN KINGMAN

Drawing title/Titre du dessin
REQUIRED DREDGE PLAN

Project No./No. du projet	Sheet/Feuille	Revision no./Révision
R.018400.002	C21	0

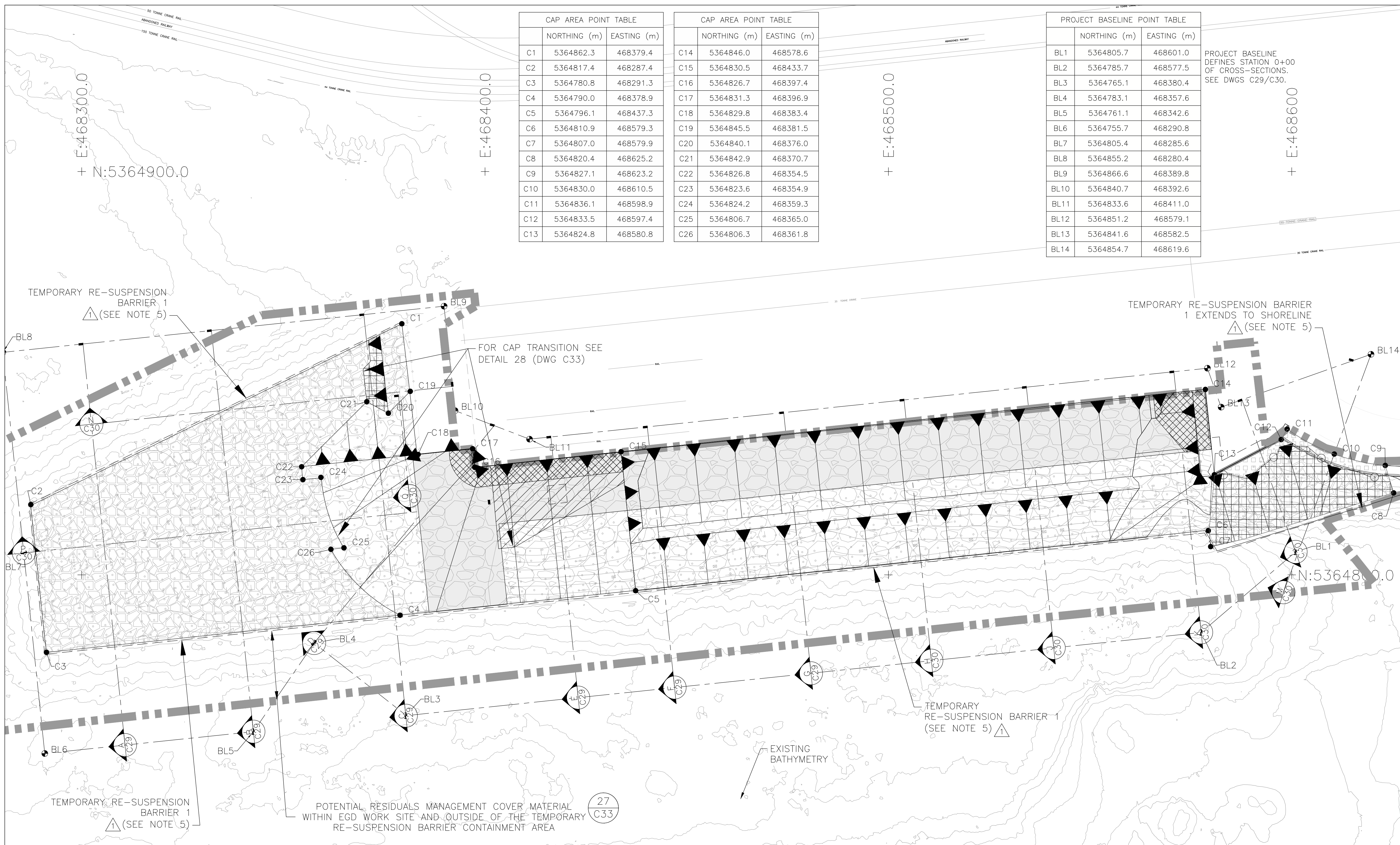


CAP AREA POINT TABLE		
	NORTHING (m)	EASTING (m)
C1	5364862.3	468379.4
C2	5364817.4	468287.4
C3	5364780.8	468291.3
C4	5364790.0	468378.9
C5	5364796.1	468437.3
C6	5364810.9	468579.3
C7	5364807.0	468579.9
C8	5364820.4	468625.2
C9	5364827.1	468623.2
C10	5364830.0	468610.5
C11	5364836.1	468598.9
C12	5364833.5	468597.4
C13	5364824.8	468580.8

CAP AREA POINT TABLE		
	NORTHING (m)	EASTING (m)
C14	5364846.0	468578.6
C15	5364830.5	468433.7
C16	5364826.7	468397.4
C17	5364831.3	468396.9
C18	5364829.8	468383.4
C19	5364845.5	468381.5
C20	5364840.1	468376.0
C21	5364842.9	468370.7
C22	5364826.8	468354.5
C23	5364823.6	468354.9
C24	5364824.2	468359.3
C25	5364806.7	468365.0
C26	5364806.3	468361.8

PROJECT BASELINE POINT TABLE		
	NORTHING (m)	EASTING (m)
BL1	5364805.7	468601.0
BL2	5364785.7	468577.5
BL3	5364765.1	468380.4
BL4	5364783.1	468357.6
BL5	5364761.1	468342.6
BL6	5364755.7	468290.8
BL7	5364805.4	468285.6
BL8	5364855.2	468280.4
BL9	5364866.6	468389.8
BL10	5364840.7	468392.6
BL11	5364833.6	468411.0
BL12	5364851.2	468579.1
BL13	5364841.6	468582.5
BL14	5364854.7	468619.6

PROJECT BASELINE DEFINES STATION 0+00 OF CROSS-SECTIONS. SEE DWGS C29/C30.



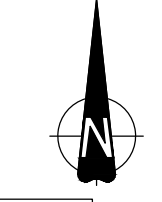
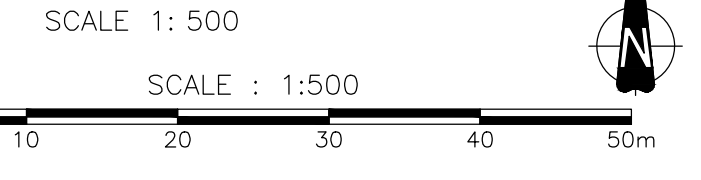
NOTES:

- UNDERPIER AREA LOWER INTERTIDAL AND SUBTIDAL BATHYMETRY WITHIN THE TEMPORARY RE-SUSPENSION BARRIER CONTAINMENT AREA IS FROM FEBRUARY 2009, JUNE 2010 AND JANUARY 2011 CRA CANADA SURVEYS LTD. MULTI BEAM SURVEY. UPPER INTERTIDAL ELEVATIONS FROM SEPTEMBER 2009 AND JULY 2011 SURVEY BY FOCUS CORPORATION. OPEN WATER AREAS OUTSIDE OF THE TEMPORARY RE-SUSPENSION BARRIER CONTAINMENT AREA WERE DREDGED AS PART OF THE PHASE 1B OPEN-WATER REMEDIATION PROJECT. OPEN WATER BATHYMETRY SURVEY WAS CONDUCTED BY CRA CANADA SURVEYS, INC. FOLLOWING COMPLETION OF PHASE 1B WORK.
- BASE MAP FROM GOLDER, JANUARY 2012.
- REFERENCE DWG C1 FOR DATUM INFORMATION.
- REFER TO TECHNICAL SPECIFICATIONS REGARDING WORK SEQUENCING AND REMEDIATION ZONES.
- CONTRACTOR (AND 3RD PARTY VENDOR) SHALL DESIGN, INSTALL AND MAINTAIN TRBS IN ACCORDANCE WITH THE SPECIFICATIONS. CONTRACTOR TO PROVIDE TRB LAYOUT AND DESIGN DETAILS IN THE ENVIRONMENTAL PROTECTION PLAN.

LEGEND:

- 14.0--- BATHYMETRY IN METRES
- TEMPORARY RE-SUSPENSION BARRIER CONTAINMENT AREA (SEE DWG C32 FOR CONTROL POINTS)
- EGD WORK SITE BOUNDARY
- ▲ CAP SLOPE DESIGNATION
- ORDINARY HIGH WATER LINE
- TYPE 1 ENGINEERED CAP: 0.15-METRE ROCK ARMOUR LAYER OVER FILTER LAYER OVER SAND (TYPE 1) LAYER. SEE DETAIL 22 (DWG C33)
- TYPE 2 ENGINEERED CAP: 0.15-METRE ROCK ARMOUR LAYER OVER FILTER LAYER OVER SAND (TYPE 2) LAYER. SEE DETAIL 23 (DWG C33)
- TYPE 3 ENGINEERED CAP: 0.30-METRE ROCK ARMOUR LAYER OVER FILTER LAYER OVER SAND (TYPE 2) LAYER. SEE DETAIL 24 (DWG C33)
- TYPE 4 ENGINEERED CAP: 0.30-METRE ROCK ARMOUR LAYER OVER FILTER LAYER OVER SAND (TYPE 3) LAYER. SEE DETAIL 25 (DWG C33)
- TYPE 5 ENGINEERED CAP: 0.15-METRE ROCK ARMOUR. SEE DETAIL 26 (DWG C33)
- BASE LINE CONTROL POINT
- CAPPING AREA CONTROL POINT
- IMPERMEABLE GEOSYNTHETIC MATERIAL

CAPPING PLAN



PREVIOUS NOTE 3 DELETED

ADDENDUM NO. 2	2015/03/20
ISSUED FOR TENDER	2014/12/19
Revision/Revision	Description/Description
Client/client	

PUBLIC WORKS AND GOVERNMENT SERVICES CANADA

Project title/Titre du projet
**ESQUIMALT GRAVING DOCK
825 ADMIRALS ROAD, VICTORIA, BC**

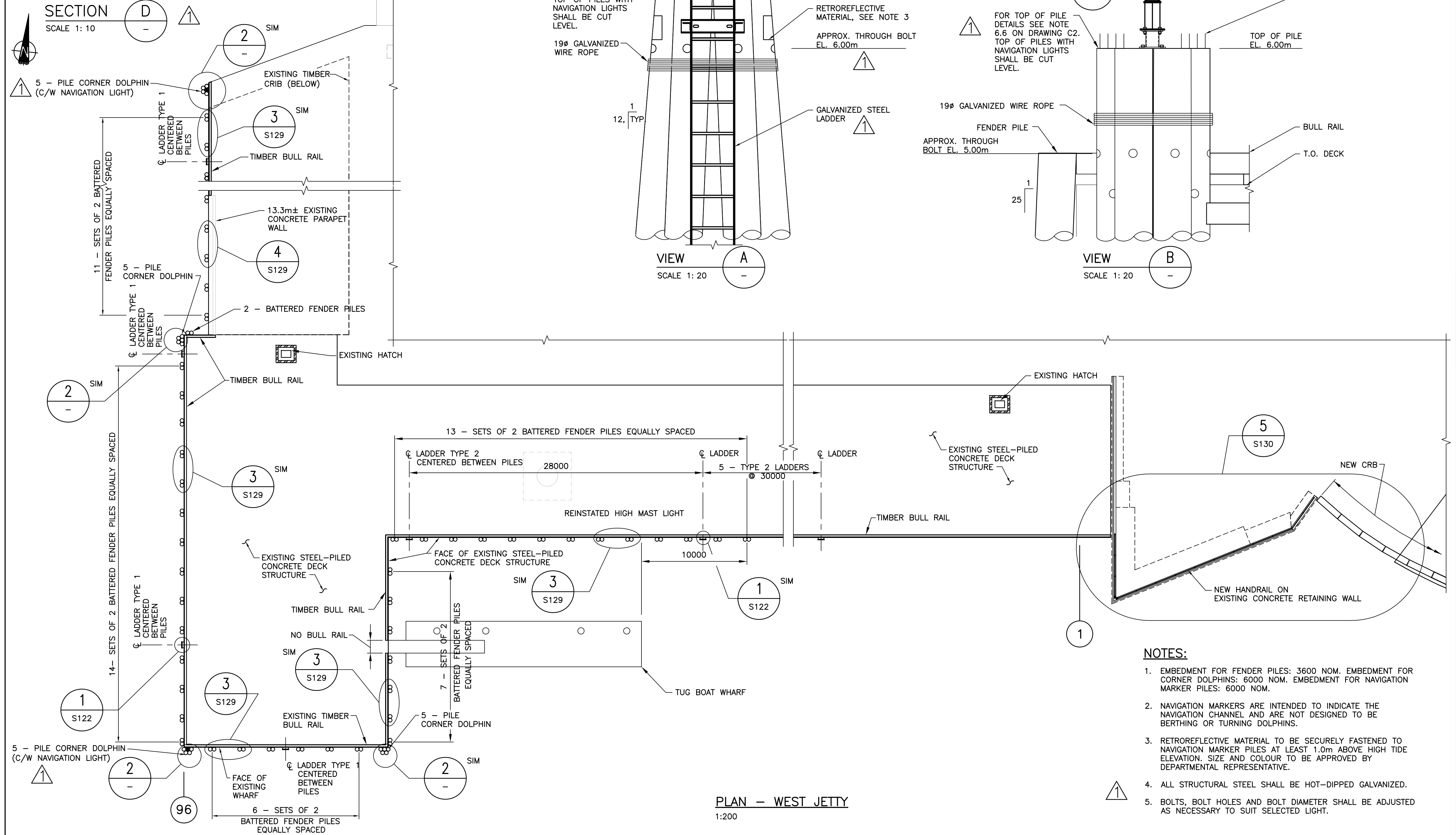
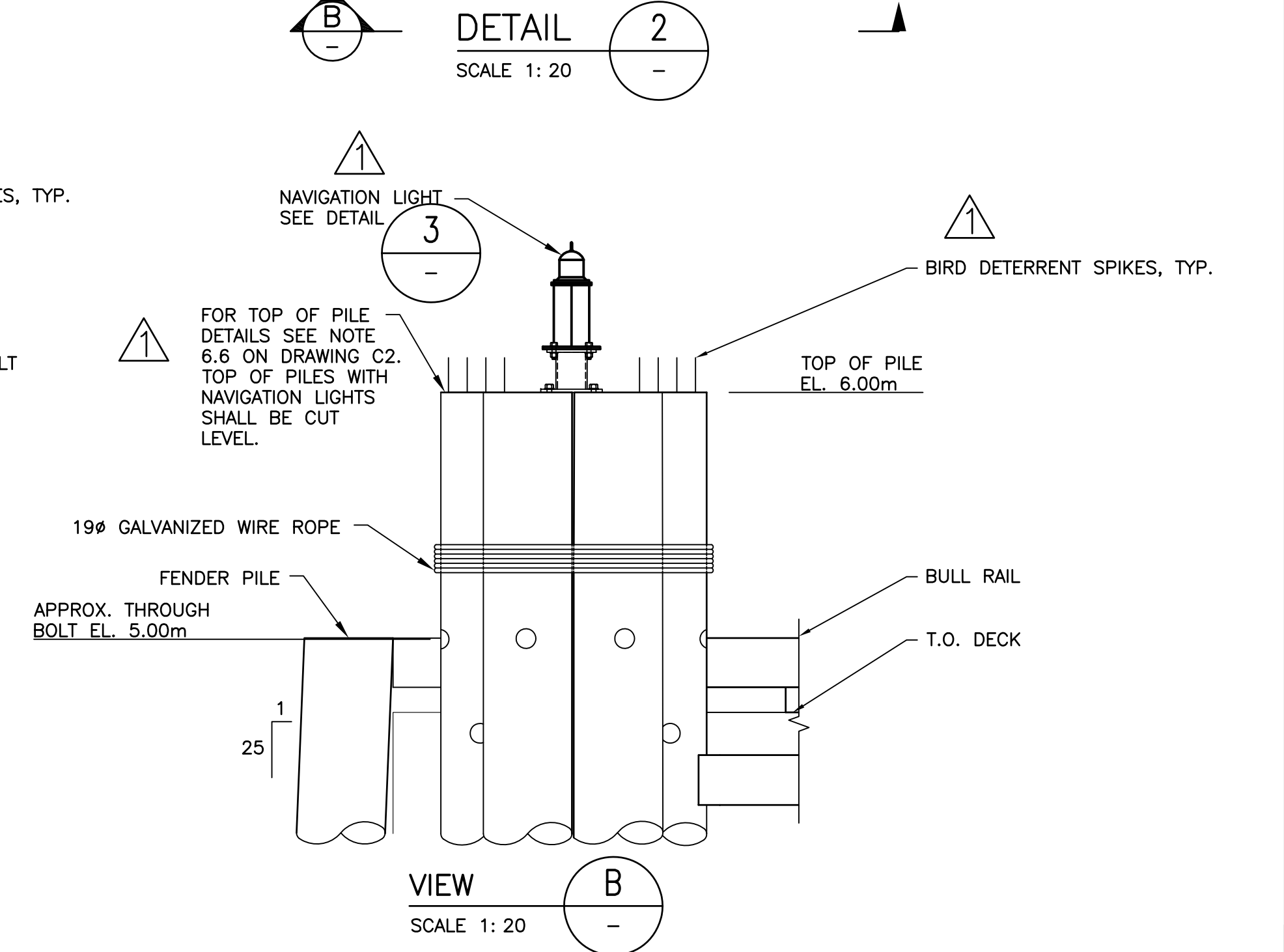
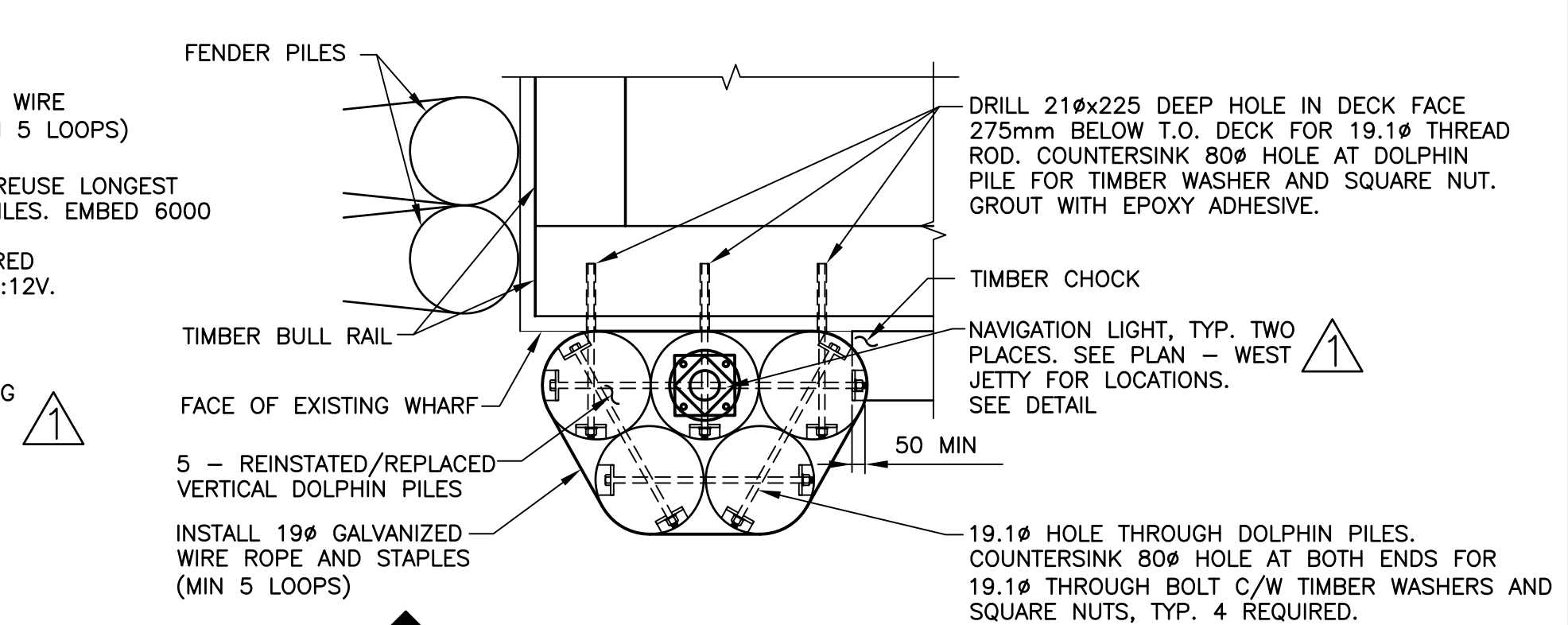
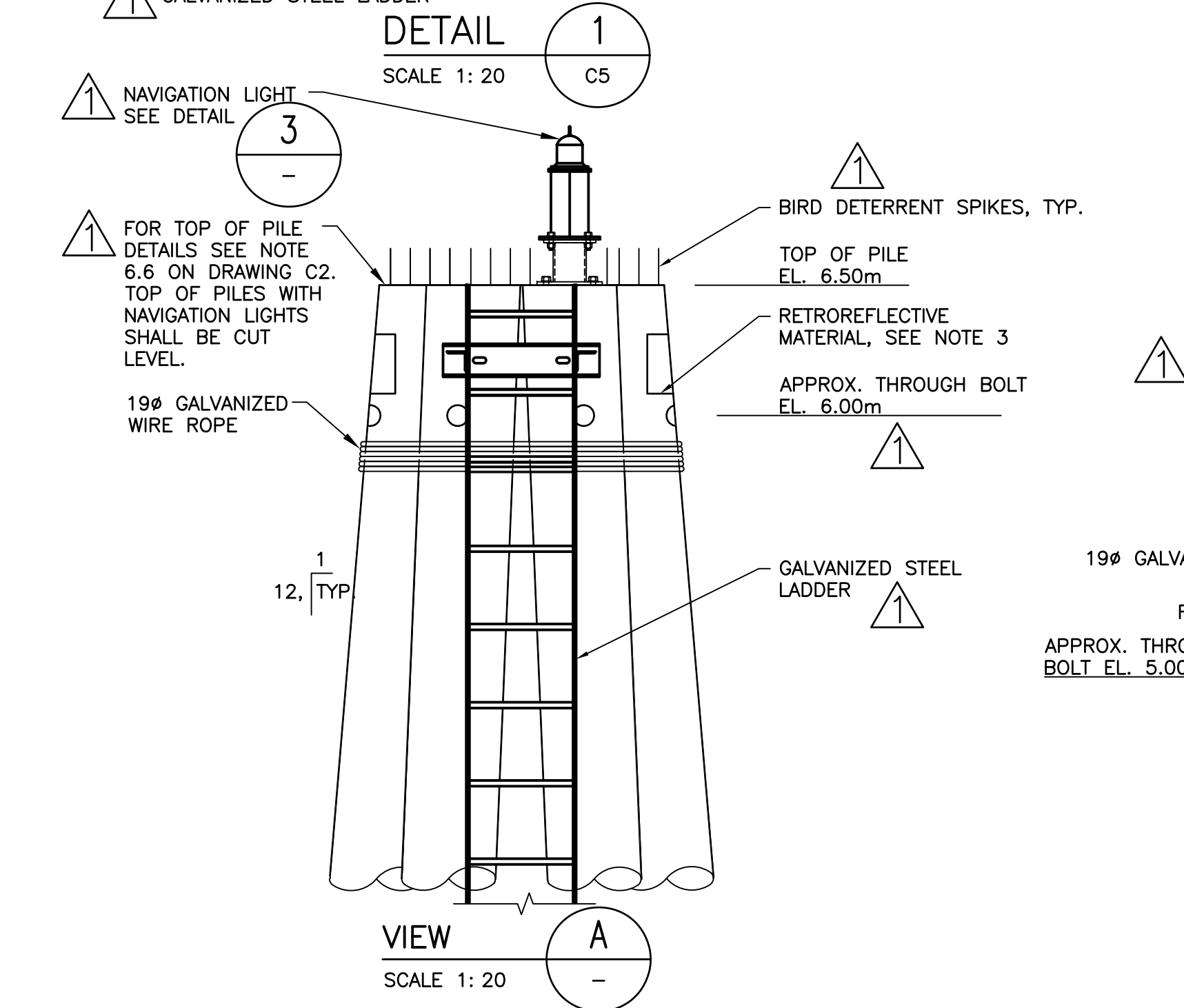
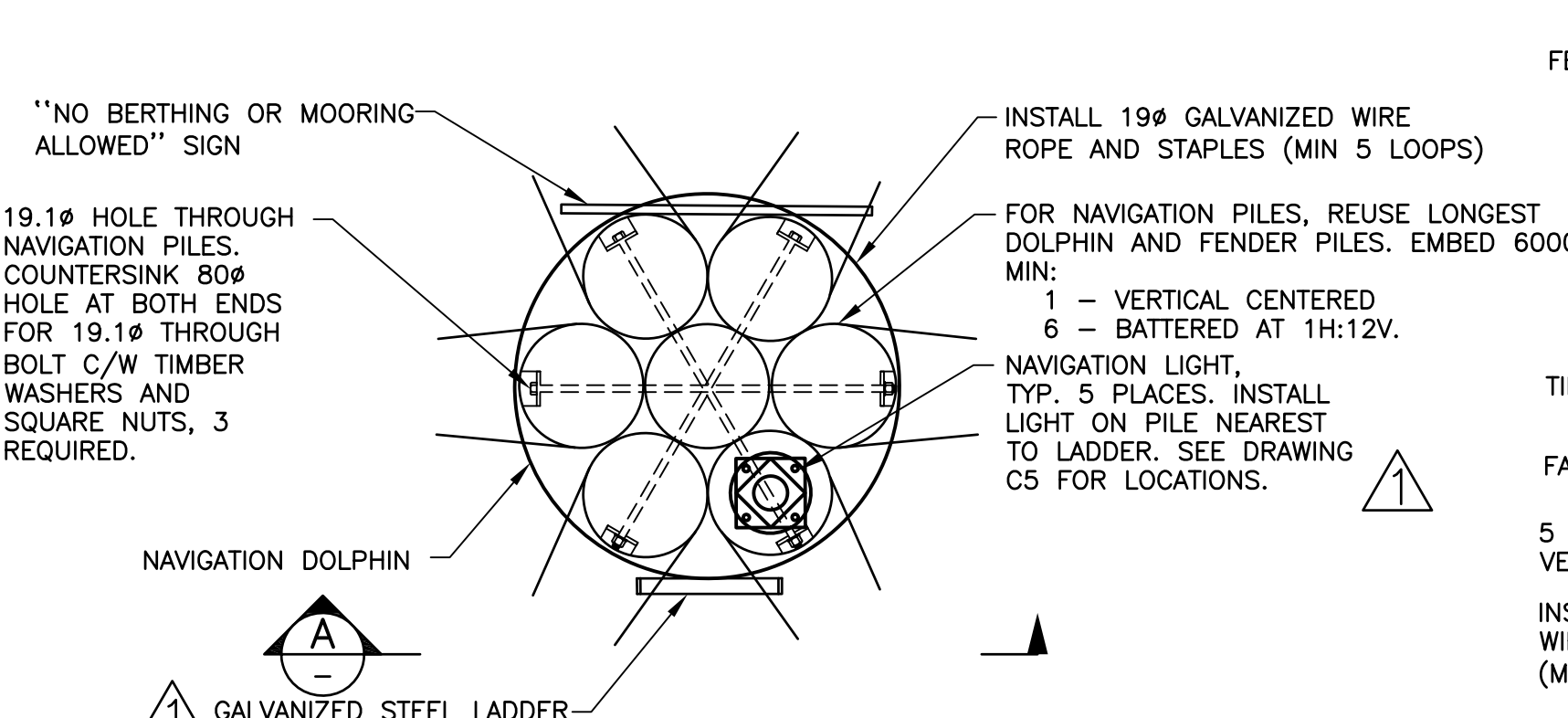
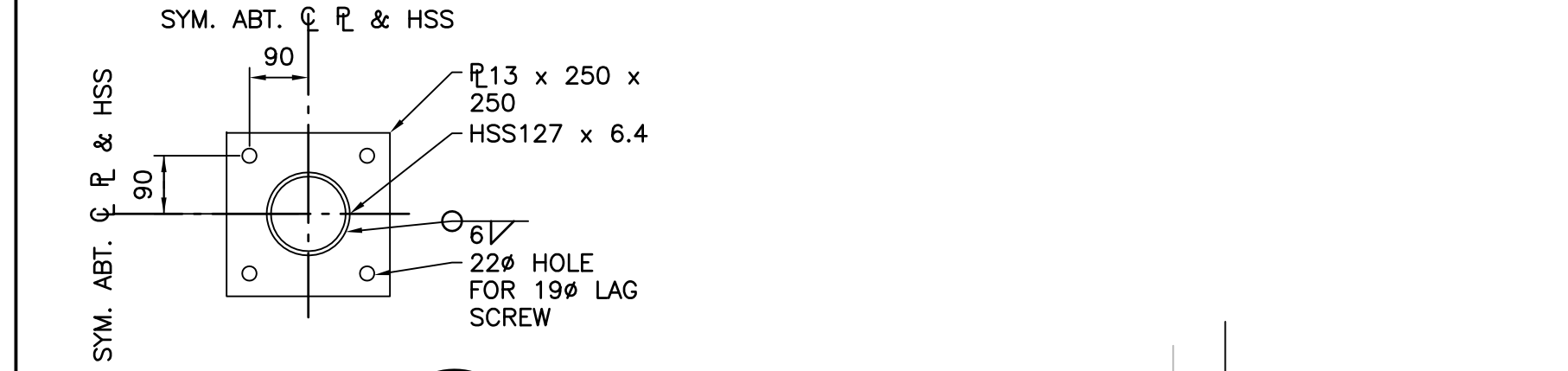
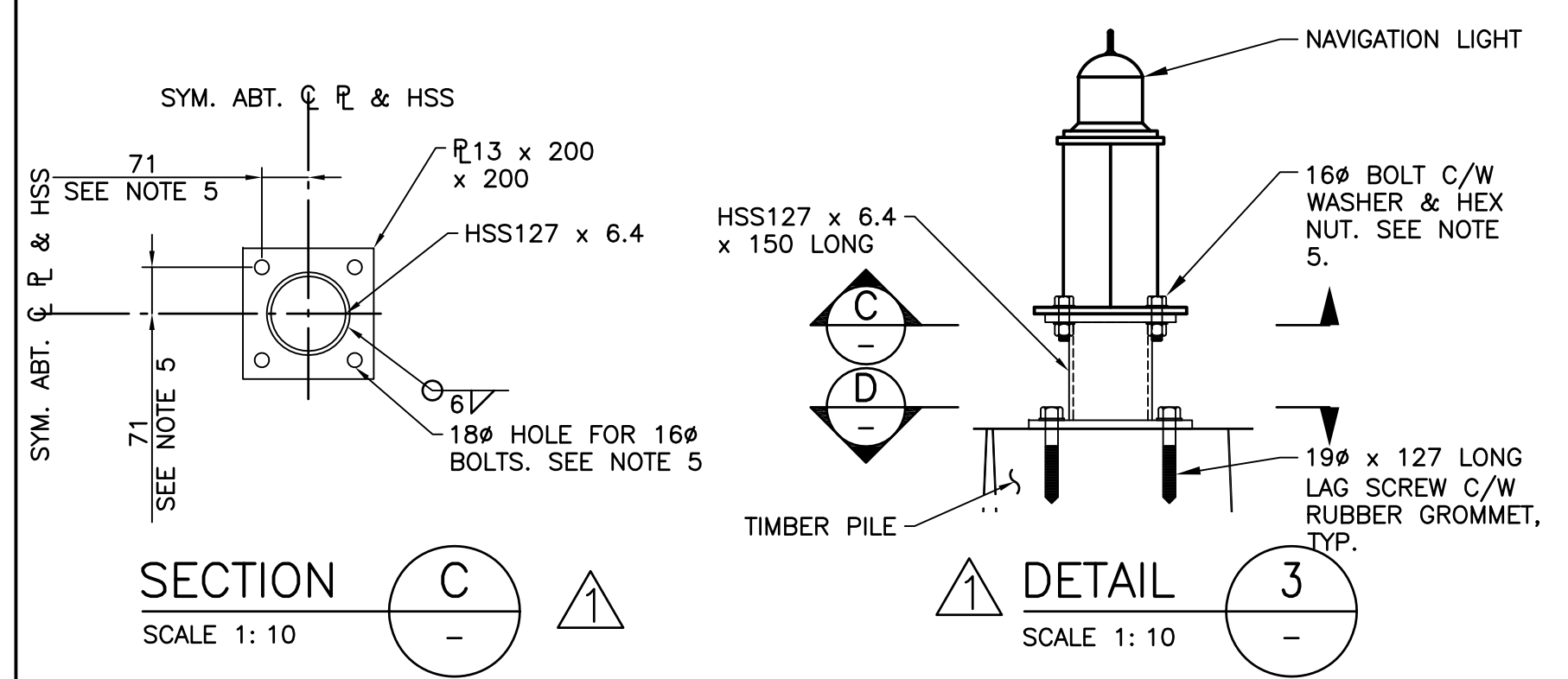
**ESQUIMALT GRAVING DOCK
WATERLOT PHASE 2
SOUTH JETTY UNDER-PIER
SEDIMENT REMEDIATION**

Consultant Signature Only

Designed by/Concept par
MATT WOLTMAN
Drawn by/Dessine par
CHRIS HEWETT
PWGSC Project Manager/Administrateur de Projets TPSGC
ANDREW MYLLY
Regional Manager, Environmental Services
COLLIN KINGMAN

Drawing title/Titre du dessin
ENGINEERED CAPPING PLAN

Project No./No. du projet R.018400.002	Sheet/ C28	Revision no./ 0
--	----------------------	---------------------------



- NOTES:**
- EMBEDMENT FOR FENDER PILES: 3600 NOM. EMBEDMENT FOR NAVIGATION CHANNEL AND ARE NOT DESIGNED TO BE BERTHING OR TURNING DOLPHINS.
 - NAVIGATION MARKERS ARE INTENDED TO INDICATE THE NAVIGATION CHANNEL AND ARE NOT DESIGNED TO BE BERTHING OR TURNING DOLPHINS.
 - RETROREFLECTIVE MATERIAL TO BE SECURELY FASTENED TO NAVIGATION MARKER PILES AT LEAST 1.0m ABOVE HIGH TIDE ELEVATION. SIZE AND COLOUR TO BE APPROVED BY DEPARTMENTAL REPRESENTATIVE.
 - ALL STRUCTURAL STEEL SHALL BE HOT-DIPPED GALVANIZED.
 - BOLTS, BOLT HOLES AND BOLT DIAMETER SHALL BE ADJUSTED AS NECESSARY TO SUIT SELECTED LIGHT.

ADDENDUM NO. 2	2015/03/31
ISSUED FOR TENDER	2014/12/19
Revision/Revision	Description/Description

Client/client
PUBLIC WORKS AND GOVERNMENT SERVICES CANADA

Project title/Titre du projet
ESQUIMALT GRAVING DOCK
 825 ADMIRALS ROAD, VICTORIA, BC

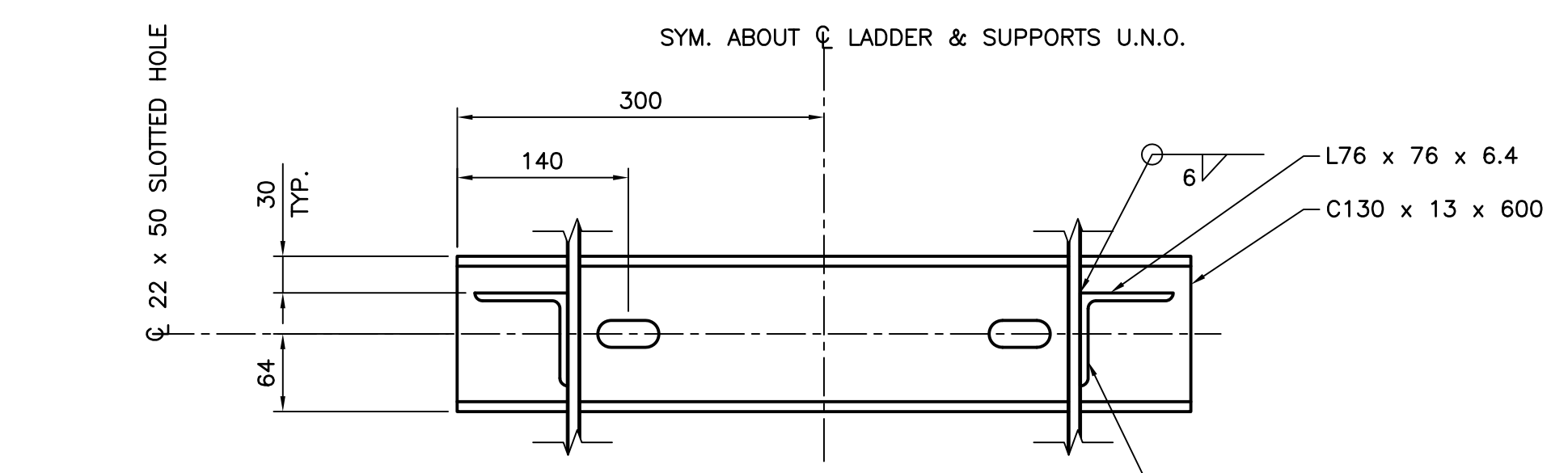
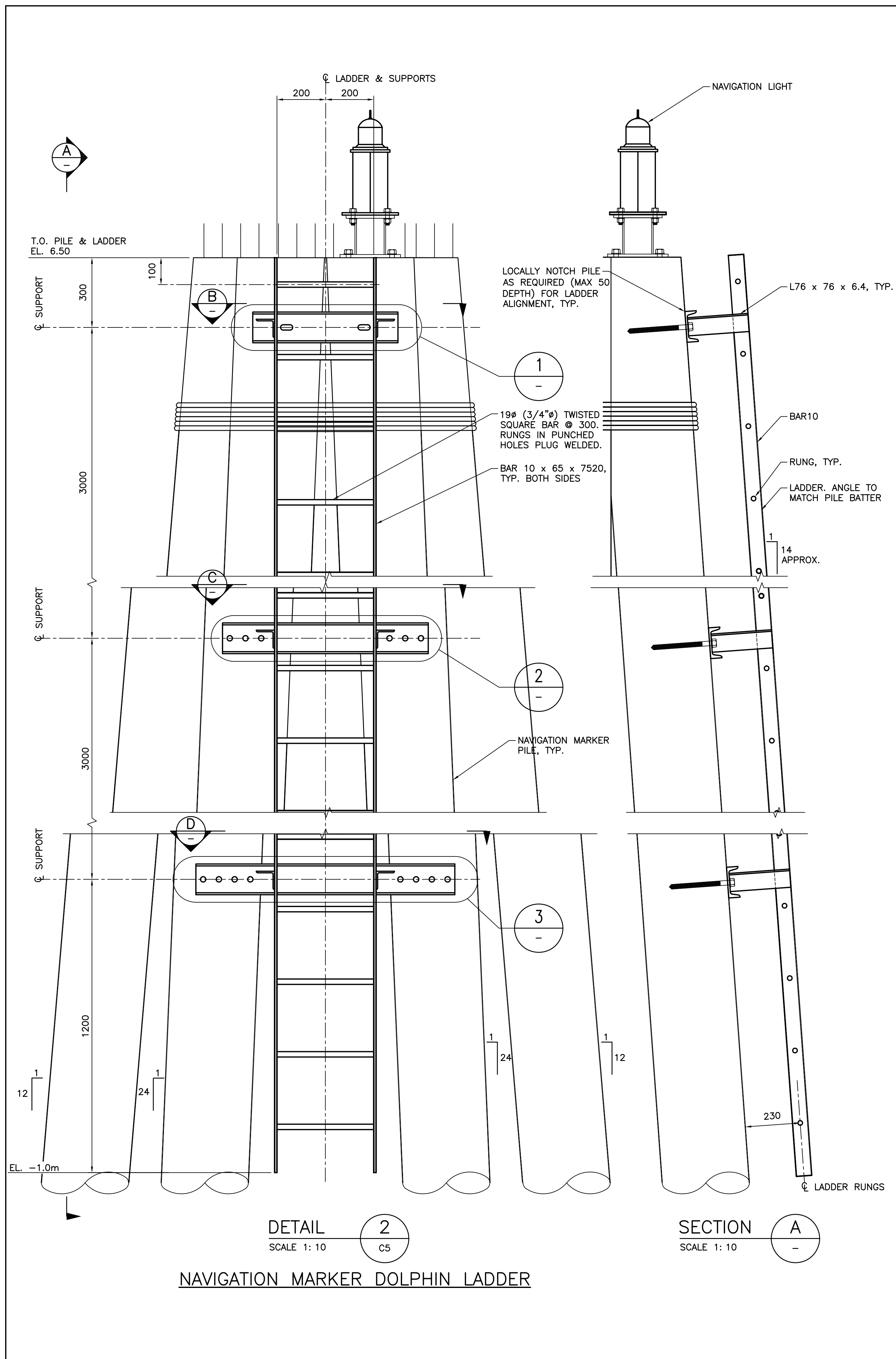
ESQUIMALT GRAVING DOCK WATERLOT PHASE 2 SOUTH JETTY UNDER-PIER SEDIMENT REMEDIATION

Consultant Signature Only
 Designed by/Concept par KRISTIN GREINACHER
 Drawn by/Dessiné par ARNIE RIST
 PWGSC Project Manager/Administrateur de Projets TPSCG ANDREW MYLLY
 Regional Manager, Environmental Services COLLIN KINGMAN

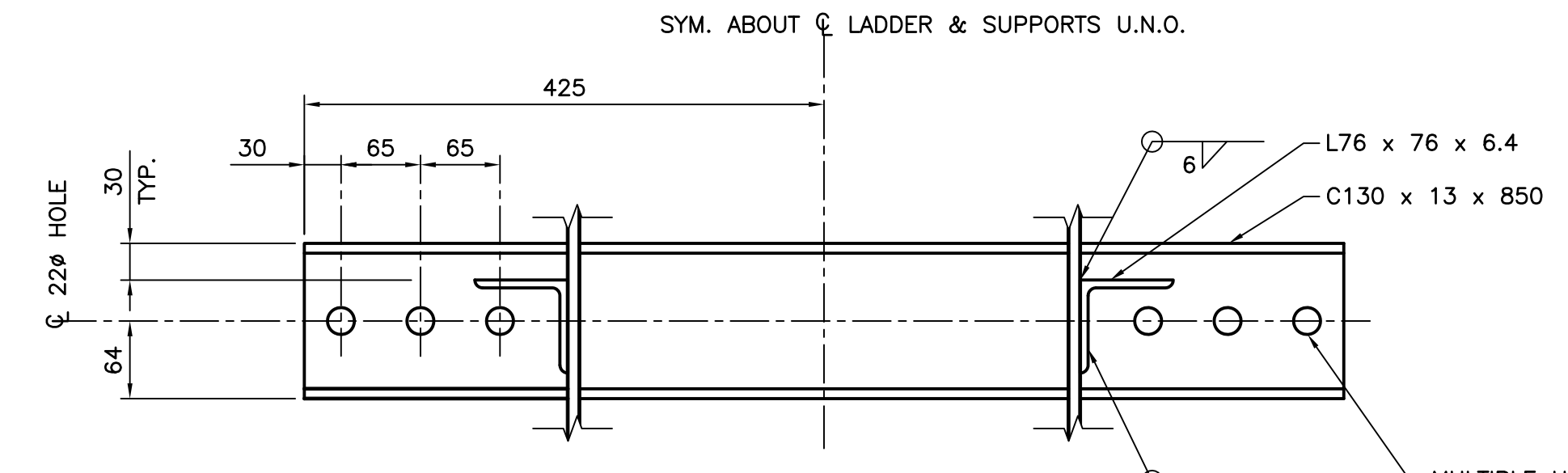
Drawing title/Titre du dessin
FENDERING SHEET 1

Project No./No. du projet R.018400.002	Sheet/ S128	Revision no./ 1
--	-----------------------	---------------------------



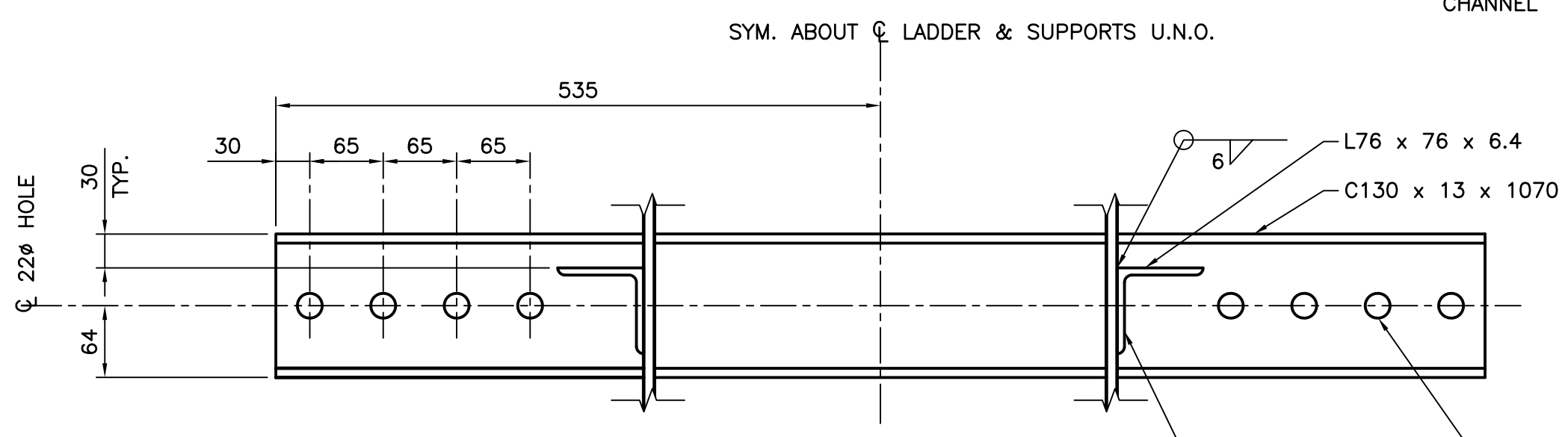


DETAIL 1
SCALE 1:5



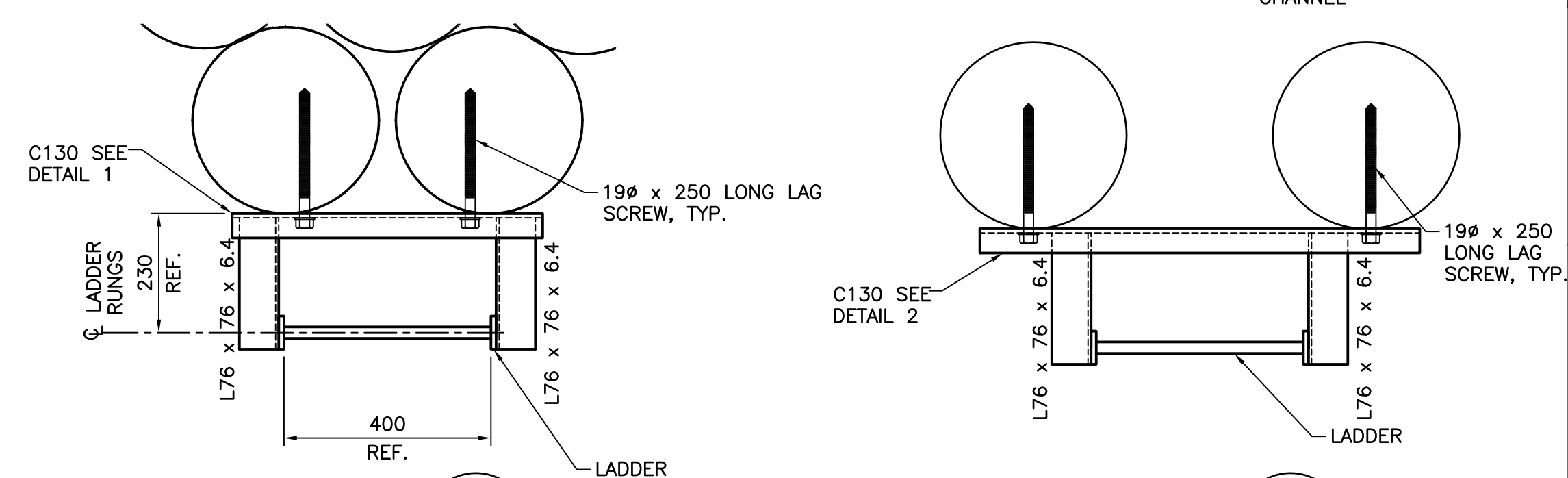
DETAIL 2
SCALE 1:5

MULTIPLE HOLES PROVIDED FOR POSITIONAL TOLERANCE OF TIMBER PILES. ONLY ONE LAG SCREW REQUIRED INTO EACH PILE AT EACH SUPPORT CHANNEL

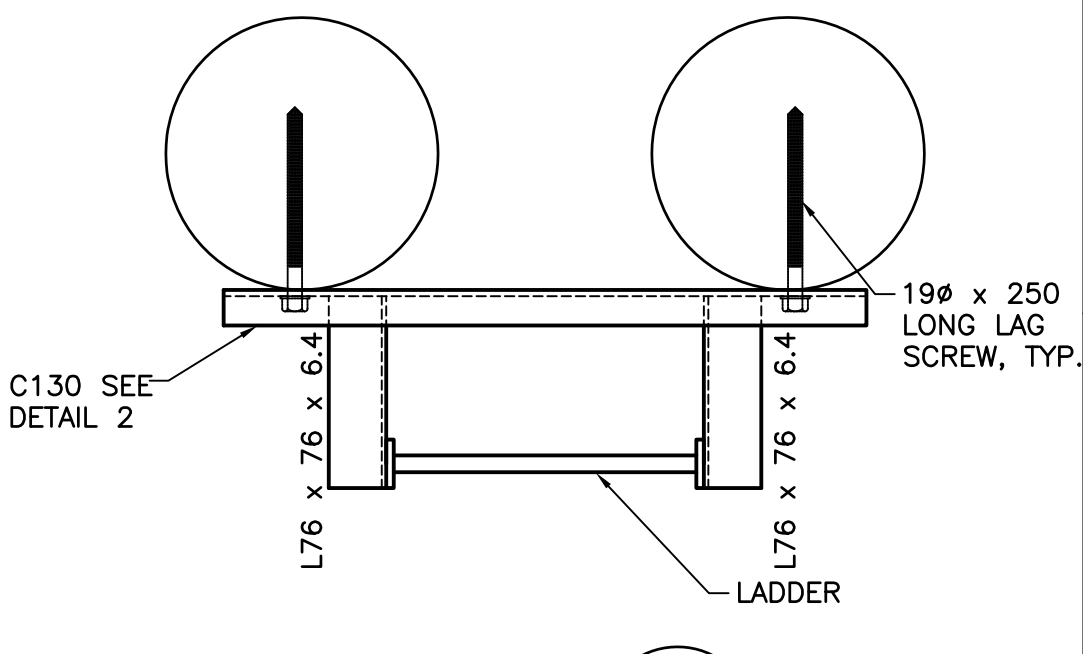


DETAIL 3
SCALE 1:5

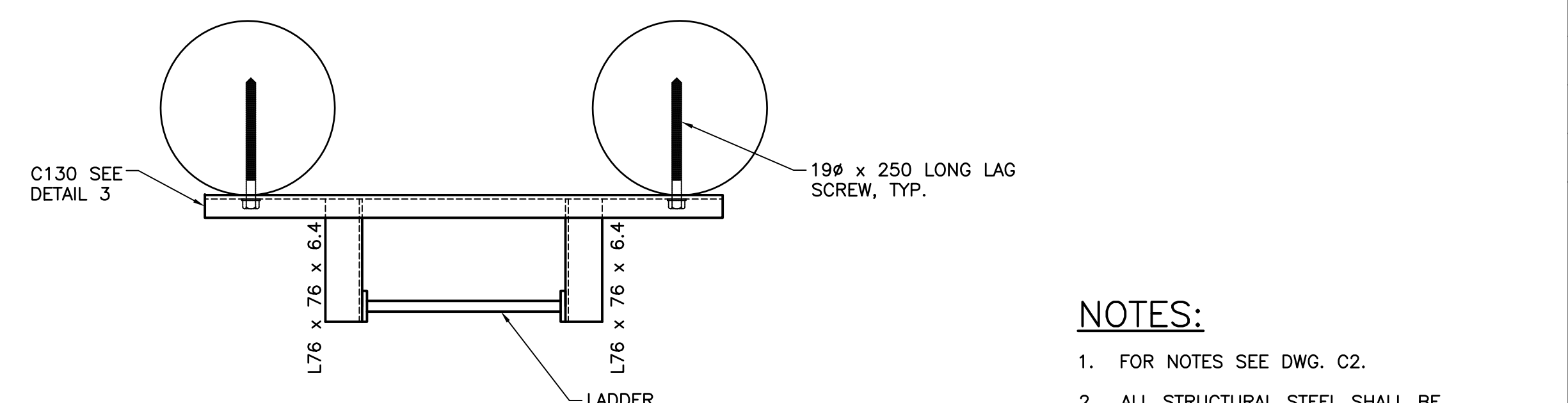
MULTIPLE HOLES PROVIDED FOR POSITIONAL TOLERANCE OF TIMBER PILES. ONLY ONE LAG SCREW REQUIRED INTO EACH PILE AT EACH SUPPORT CHANNEL



SECTION B
SCALE 1:10



SECTION C
SCALE 1:10



SECTION D
SCALE 1:10

- NOTES:**
- FOR NOTES SEE DWG. C2.
 - ALL STRUCTURAL STEEL SHALL BE HOT-DIPPED GALVANIZED.
 - TREAT ALL PILE NOTCHES PER THE SPECIFICATION.

ADDENDUM NO. 2			2015/03/31
Revision/Revision	Description/Description	Date/Date	
Client/client			
PUBLIC WORKS AND GOVERNMENT SERVICES CANADA			
Project title/Titre du projet ESQUIMALT GRAVING DOCK 825 ADMIRALS ROAD, VICTORIA, BC			
ESQUIMALT GRAVING DOCK WATERLOT PHASE 2 SOUTH JETTY UNDER-PIER SEDIMENT REMEDIATION			
Consultant Signature Only			
Designed by/Concept par KRISTIN GREINACHER			
Drawn by/Dessiné par MIKE BRIDDEN			
PWGSC Project Manager/Administrateur de Projets TPSCG ANDREW MYLLY			
Regional Manager, Environmental Services COLLIN KINGMAN			
Drawing title/Titre du dessin ACCESS LADDERS AT NAVIGATION MARKER DOLPHINS			
Project No./No. du projet R.018400.002	Sheet/ S131	Revision no./ 0	