

Spec Item:	SPECIFICATION	TC/MS Field #: N/A
FLOURESCENT LIGHT SUPPLY		

FLOURESCENT LIGHT SUPPLY

Part 1: SCOPE:

- 1.1** The intent of this spec is to supply replacement fluorescent lighting for the Louis St. Laurent's accommodation spaces. The current lighting consists of; four foot recessed fixtures to match Dampa ceiling panels with and without dimmable ballast capabilities; two foot recessed fixture to match Dampa ceiling panels; four foot bulkhead mounted alleyway fixtures with and without final resource lighting (120v DC emergency power feed) and two foot bulkhead mounted alleyway fixtures. All existing fixtures have T12 tubes and compatible ballasts per fixture. The intent is to replace these fixtures with T8 tube fixtures and associated ballast.

1.2

1.2.1 Marine Type style lights (must meet technical descriptions (a) through (m))

Qty:

1. **(240)** four foot flush mounted fixtures with 3 x 25 T8 Fluorescent tubes, standard ballast and acrylic lenses. Fixtures must fit into the existing Dampa ceiling panels with dimensions as per sketch (1).
2. **(40)** four foot flush mounted fixtures with 3 x 25 T8 Fluorescent tubes, dimmable line voltage ballast and acrylic lenses. Fixtures must fit into the existing Dampa ceiling panels with dimensions as per sketch (1).
3. **(10)** two foot flush mounted fixtures with 2 x 17 T8 Fluorescent tubes, standard ballast and acrylic prismatic lenses. Fixtures must fit into the existing Dampa ceiling panels with dimensions as per sketch (2).
4. **(80)** four foot bulkhead mounted alleyway fixtures with 3 x 32 T8 Fluorescent tubes, center tube is separately switched for final resource lighting 120v DC, with standard ballast and opal acrylic lenses. Cornice fixtures must meet the dimensions as per sketch (3).

1.2.2 Qty:

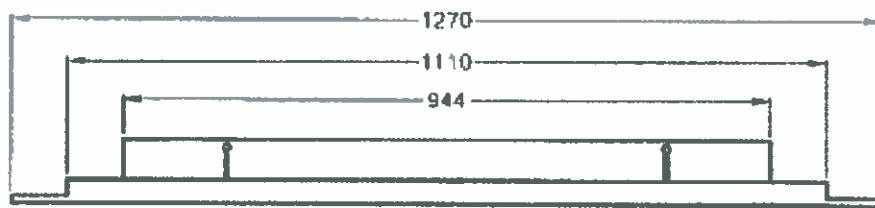
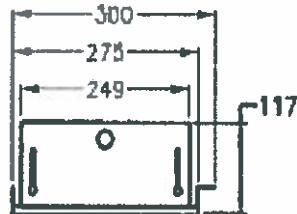
5. **(80)** Marine Type vapour tight fixtures with 2 x 32 T8 Fluorescent tubes (must meet Technical Description (i) through (n) below.) Fixtures must meet the dimensions as per sketch (4). Bolt hole to accept minimum 3/8 bolt.

Spec Item:	SPECIFICATION	TC/MS Field #: N/A
FLOURESCENT LIGHT SUPPLY		

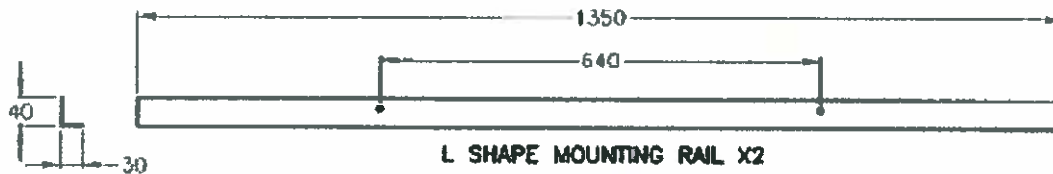
Part 2: TECHNICAL DESCRIPTION:

- a) Flush mount fixture lenses are to be of 3mm FR1 K12 acrylic material construction.
- b) Cornice bulkhead mounted fixture lenses to be 3mm opel smooth finish
- c) The Flush mount fixture is to be for recessed flush mounting
- d) The Flush mount fixture must clear the existing cut-outs in the Dampa panel ceiling and fit securely with the interlocking Dampa retaining system.
- e) The Flush mount fixture is to have 1 (½ inch) knockout on back center to match the existing cable entry.
- f) Cornice bulkhead mounted fixtures to have 1 (½ inch) knockout in the center top for cable entry.
- g) Lens is to be secured with spring clips or screws
- h) Ballast for dimmable fixtures to be 120Volt, 60 Hz line voltage control.
- i) Ballast is to be Instant Start, 120-277Volts Ac , 50/60HZ, minimum starting temp -18degrees C for standard fixtures
- j) The fixture to be IP20, UL1598 and UL1598A marine supplement
- k) Fixture is to have all internal stranded wire for marine specifications
- l) Fixture must have terminal block for wiring connections with wire protection
- m) Fixture to be Corrosion resistant aluzink material, with Epoxy powder coated white RAL 9016
- n) Fixture to have clear polycarbonate diffuser, Feed through wiring up to 23A, 4x M20 Cable entries supplied complete with two polyamide glands, and two M20 nickel plated brass blind plugs, Ingress protection min IP54, all internal hardware to be stainless steel, seamless deep drawn housing, Stainless steel lens clips

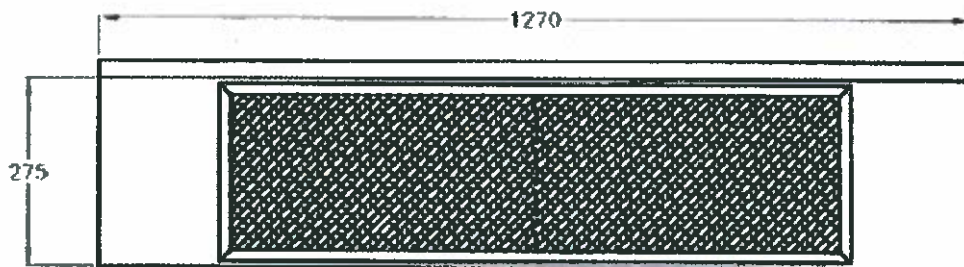
Spec Item:	SPECIFICATION	TC/MS Field #: N/A
FLOURESCENT LIGHT SUPPLY		

Sketch 1:

PROFILE
DLT RS (M) FR 325 SPECIAL FRAME

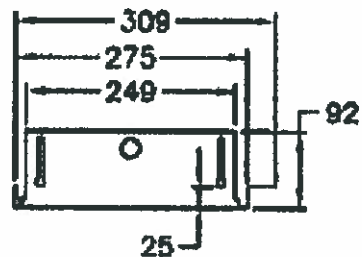
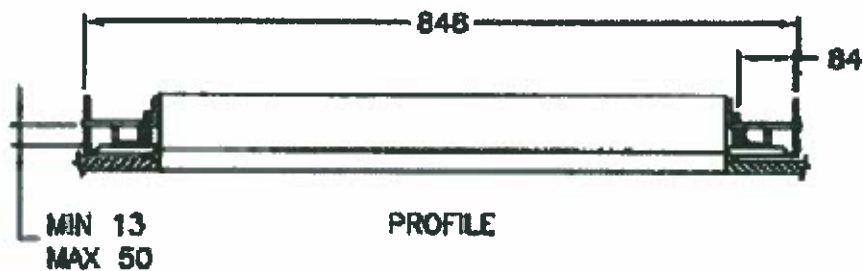
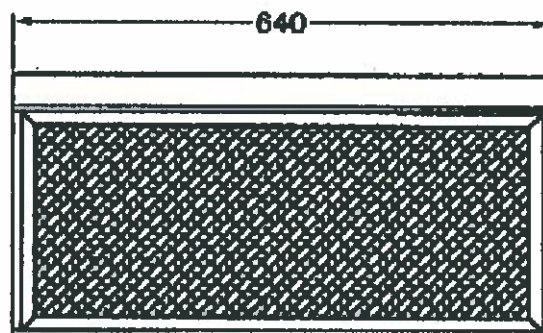


L SHAPE MOUNTING RAIL X2

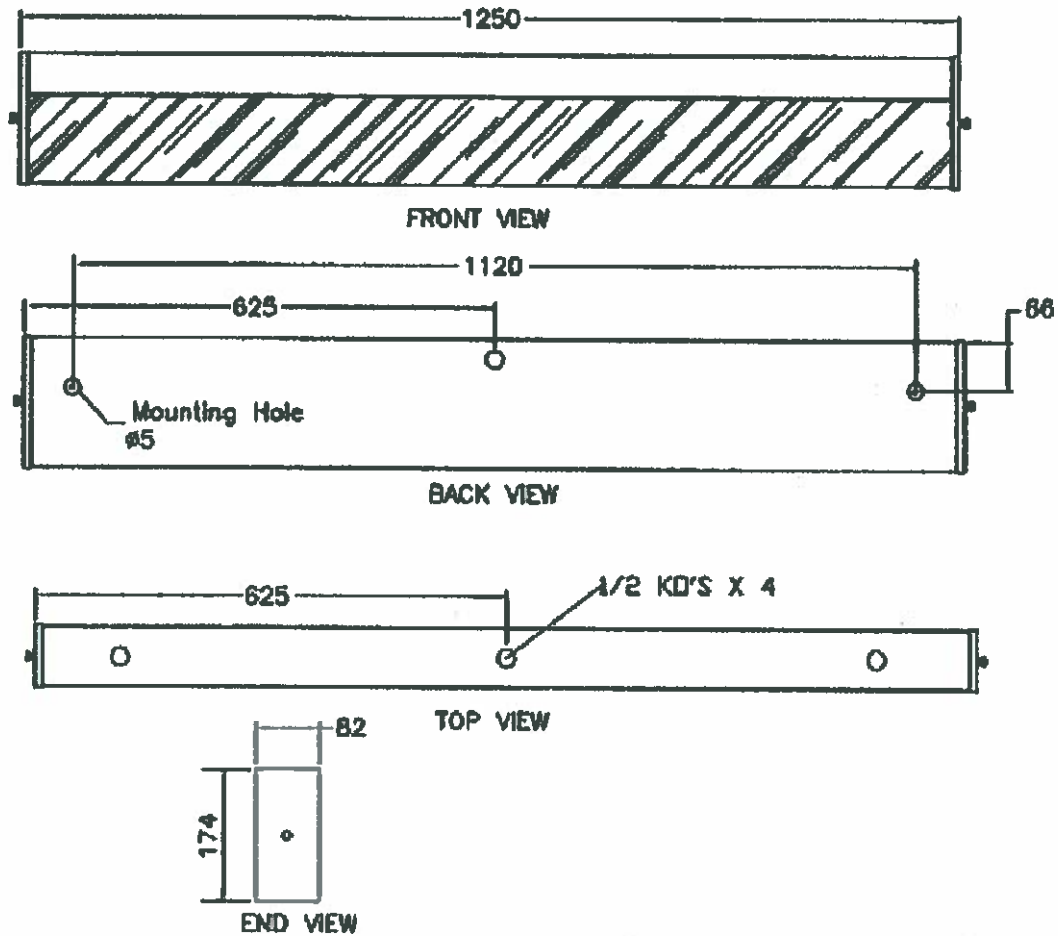


BOTTOM VIEW

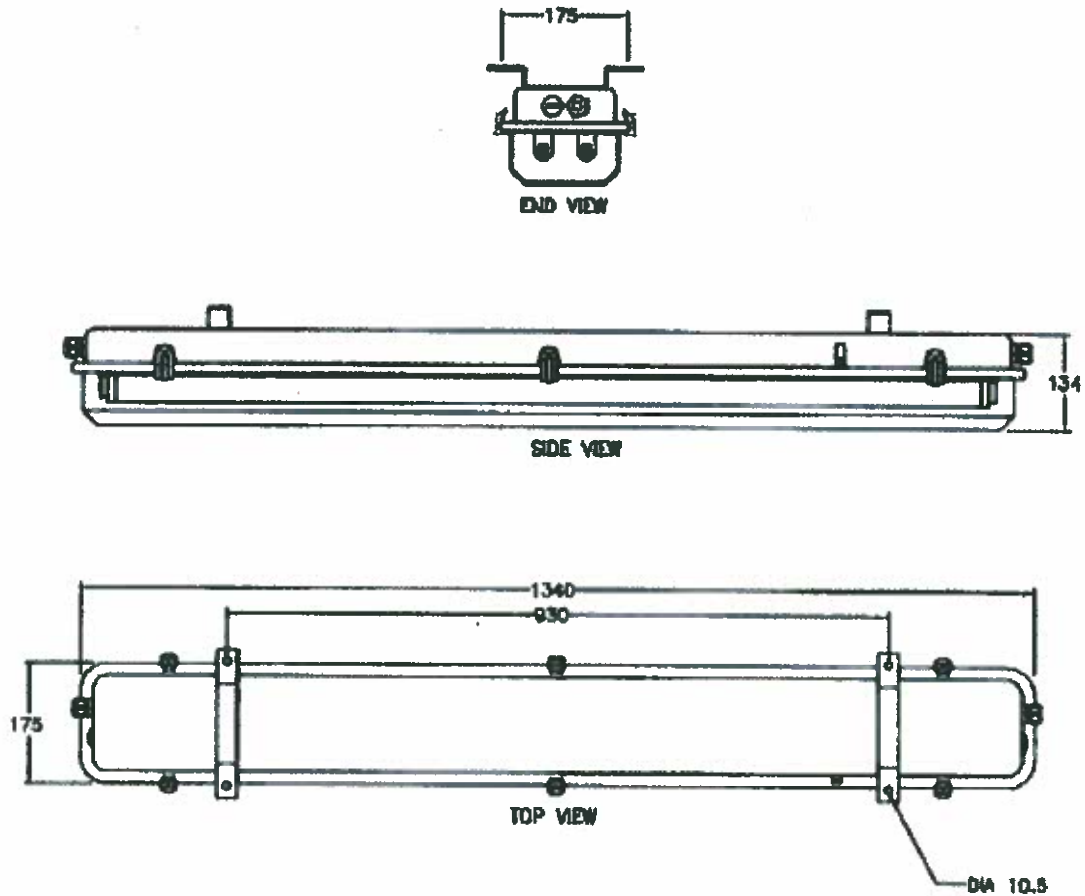
Spec Item:	SPECIFICATION	TC/MS Field #: N/A
FLOURESCENT LIGHT SUPPLY		

Sketch 2:**END VIEW****PROFILE****BOTTOM VIEW
DLT RS (M) FR1**

Spec Item:	SPECIFICATION	TC/MS Field #: N/A
FLOURESCENT LIGHT SUPPLY		

Sketch 3:

Spec Item:	SPECIFICATION	TC/MS Field #: N/A
FLOURESCENT LIGHT SUPPLY		

Sketch 4:

Spec Item:	SPECIFICATION	TC/MS Field #: N/A
FLOURESCENT LIGHT SUPPLY		

Part 4: PROOF OF PERFORMANCE:

- 4.1** All fixtures to be to the satisfaction of the Chief Engineer.

Part 5: DELIVERABLES:

1. Full engineered drawing denoting all dimensions and clearances needed.
2. Full details on compatible dimmers
3. All fixtures to be supplied with lamps and additional spares as noted below;
 - a. 17w – 12 spare
 - b. 25w – 50 spare
 - c. 32w – 50 spare
4. Fixtures to be properly backed for shipping and delivered to:
CCGS Warehouse 05C, 13 Akerley Blvd, Dartmouth, NS, B3B 1J6
- Delivery of entire order will be done in four shipments over a twelve month period which will allow for the fixtures to be installed in an orderly fashion.