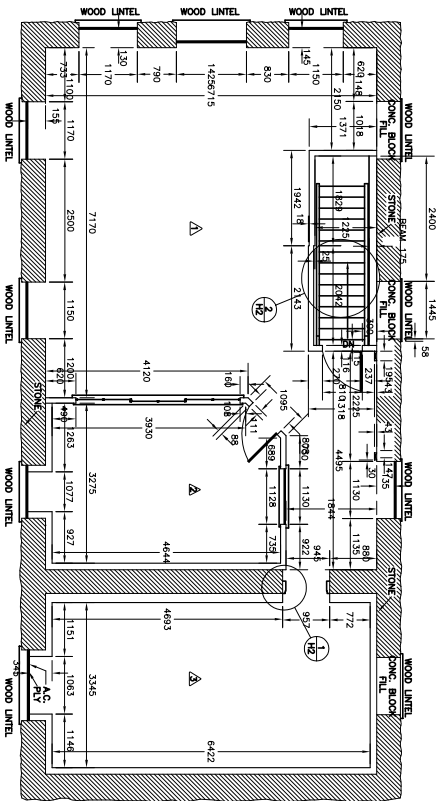


APPENDIX D

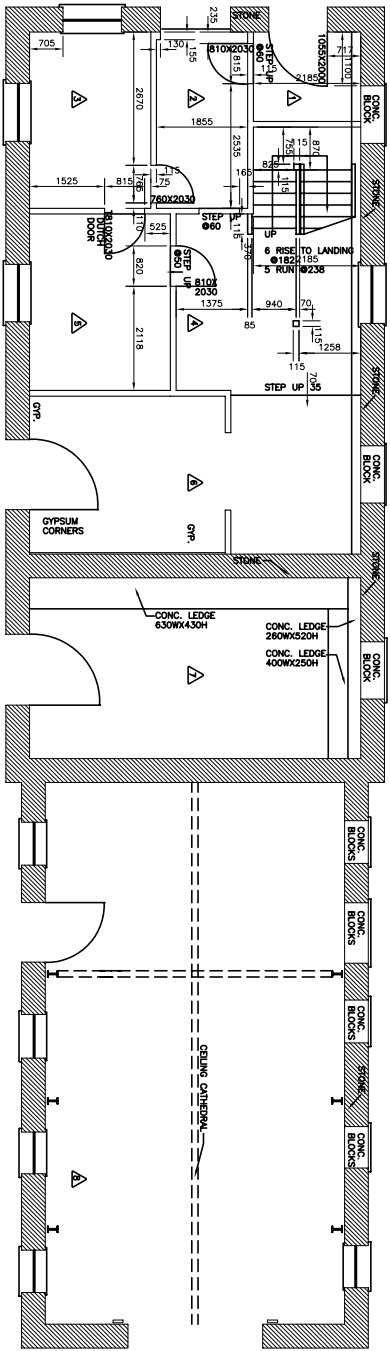
Reference DWG #COSSM 97/HR24 (Sheet H1)



SECOND FLOOR PLAN
1 : 50

- NOTES:
- △ FLOOR BOARDS 90 TO 138
 - △ STONES - WALL HEIGHT 2400
 - △ STONES - WALL PAINTED
 - △ CEILING - 3/8" BOARD ON JOISTS (HEIGHT 2380)
 - △ CONCRETE FLOOR - 4" COMPACTED SAND ON 8" CONCRETE (HEIGHT 2380)
 - △ BOARD W/VAULTING 2"00
 - △ ASBESTOS TILE FLOOR
 - △ WALLS & CEILING
 - △ CEILING HEIGHT 2878
 - △ FLOOR BOARDS
 - △ CEILING W/VAULTING
 - △ BOARD W/VAULTING 2"00
 - △ INTERIOR WALLS PAINTED
 - △ ALL WINDOWS HAVE A FULL LED-GLASS COVERING ON THE INSIDE
 - △ TO RESEAL 0178
 - △ TO RESEAL 0223
 - △ TO RESEAL 0223

- NOTES:
- 1 CONCRETE FLOOR
 - 2 CEILING - 3/8" BOARD ON JOISTS (HEIGHT 2380)
 - 3 CARPET ON PLWOOD FLOOR
 - 4 CONCRETE FLOOR - 4" COMPACTED SAND ON 8" CONCRETE (HEIGHT 2380)
 - 5 BOARD W/VAULTING 2"00
 - 6 INTERIOR WALLS PAINTED
 - 7 CARPET FLOOR
 - 8 CARPET ON PLWOOD FLOOR
 - 9 INTERIOR WALLS PAINTED
 - 10 INTERIOR WALLS PAINTED
 - 11 INTERIOR WALLS PAINTED
 - 12 INTERIOR WALLS PAINTED
 - 13 INTERIOR WALLS PAINTED
 - 14 INTERIOR WALLS PAINTED
 - 15 INTERIOR WALLS PAINTED
 - 16 INTERIOR WALLS PAINTED
 - 17 INTERIOR WALLS PAINTED
 - 18 INTERIOR WALLS PAINTED
 - 19 INTERIOR WALLS PAINTED
 - 20 INTERIOR WALLS PAINTED
 - 21 INTERIOR WALLS PAINTED
 - 22 INTERIOR WALLS PAINTED
 - 23 INTERIOR WALLS PAINTED
 - 24 INTERIOR WALLS PAINTED
 - 25 INTERIOR WALLS PAINTED
 - 26 INTERIOR WALLS PAINTED
 - 27 INTERIOR WALLS PAINTED
 - 28 INTERIOR WALLS PAINTED
 - 29 INTERIOR WALLS PAINTED
 - 30 INTERIOR WALLS PAINTED
 - 31 INTERIOR WALLS PAINTED
 - 32 INTERIOR WALLS PAINTED
 - 33 INTERIOR WALLS PAINTED
 - 34 INTERIOR WALLS PAINTED
 - 35 INTERIOR WALLS PAINTED
 - 36 INTERIOR WALLS PAINTED
 - 37 INTERIOR WALLS PAINTED
 - 38 INTERIOR WALLS PAINTED
 - 39 INTERIOR WALLS PAINTED
 - 40 INTERIOR WALLS PAINTED
 - 41 INTERIOR WALLS PAINTED
 - 42 INTERIOR WALLS PAINTED
 - 43 INTERIOR WALLS PAINTED
 - 44 INTERIOR WALLS PAINTED
 - 45 INTERIOR WALLS PAINTED
 - 46 INTERIOR WALLS PAINTED
 - 47 INTERIOR WALLS PAINTED
 - 48 INTERIOR WALLS PAINTED
 - 49 INTERIOR WALLS PAINTED
 - 50 INTERIOR WALLS PAINTED
 - 51 INTERIOR WALLS PAINTED
 - 52 INTERIOR WALLS PAINTED
 - 53 INTERIOR WALLS PAINTED
 - 54 INTERIOR WALLS PAINTED
 - 55 INTERIOR WALLS PAINTED
 - 56 INTERIOR WALLS PAINTED
 - 57 INTERIOR WALLS PAINTED
 - 58 INTERIOR WALLS PAINTED
 - 59 INTERIOR WALLS PAINTED
 - 60 INTERIOR WALLS PAINTED
 - 61 INTERIOR WALLS PAINTED
 - 62 INTERIOR WALLS PAINTED
 - 63 INTERIOR WALLS PAINTED
 - 64 INTERIOR WALLS PAINTED
 - 65 INTERIOR WALLS PAINTED
 - 66 INTERIOR WALLS PAINTED
 - 67 INTERIOR WALLS PAINTED
 - 68 INTERIOR WALLS PAINTED
 - 69 INTERIOR WALLS PAINTED
 - 70 INTERIOR WALLS PAINTED
 - 71 INTERIOR WALLS PAINTED
 - 72 INTERIOR WALLS PAINTED
 - 73 INTERIOR WALLS PAINTED
 - 74 INTERIOR WALLS PAINTED
 - 75 INTERIOR WALLS PAINTED
 - 76 INTERIOR WALLS PAINTED
 - 77 INTERIOR WALLS PAINTED
 - 78 INTERIOR WALLS PAINTED
 - 79 INTERIOR WALLS PAINTED
 - 80 INTERIOR WALLS PAINTED
 - 81 INTERIOR WALLS PAINTED
 - 82 INTERIOR WALLS PAINTED
 - 83 INTERIOR WALLS PAINTED
 - 84 INTERIOR WALLS PAINTED
 - 85 INTERIOR WALLS PAINTED
 - 86 INTERIOR WALLS PAINTED
 - 87 INTERIOR WALLS PAINTED
 - 88 INTERIOR WALLS PAINTED
 - 89 INTERIOR WALLS PAINTED
 - 90 INTERIOR WALLS PAINTED
 - 91 INTERIOR WALLS PAINTED
 - 92 INTERIOR WALLS PAINTED
 - 93 INTERIOR WALLS PAINTED
 - 94 INTERIOR WALLS PAINTED
 - 95 INTERIOR WALLS PAINTED
 - 96 INTERIOR WALLS PAINTED
 - 97 INTERIOR WALLS PAINTED
 - 98 INTERIOR WALLS PAINTED
 - 99 INTERIOR WALLS PAINTED
 - 100 INTERIOR WALLS PAINTED



GROUND FLOOR PLAN
1 : 50

Canada

Heritage Recording / Enregistrement des biens culturels
Ontario Region / Région de l'Ontario

Project title / Titre du projet
ALGOMA DISTRICT SAULT CANAL STORES BUILDING

Drawing title / Titre du dessin
FLOOR PLANS

Type of Record / Type d'enregistrement
SUMMARY RECORD

Drawn by / Dessiné par
L. SAUVE & J. MCKAY

Field Recording by / Relevé-terrain par
B. FRINGS
K. MAC DONELL
S. MAC DONELL

Scale / Echelle
1:50

Date
JAN. 1997

Date
SEPT. 1994

Checked by / Vérifié par
Date

Project No. / No. du projet
81099010

Sheet No. / Feuille No.
H1

Drawing Reference No./No. du Dessin
COS5MC 97/HK24

Scale / Echelle
1:50

Date
JAN. 1997

Date
SEPT. 1994

Checked by / Vérifié par
Date

Project No. / No. du projet
81099010

Sheet No. / Feuille No.
H1

Drawing Reference No./No. du Dessin
COS5MC 97/HK24