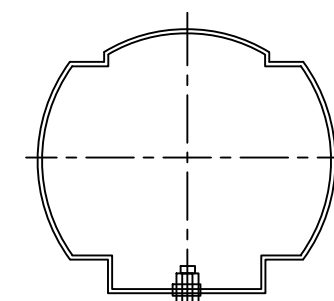
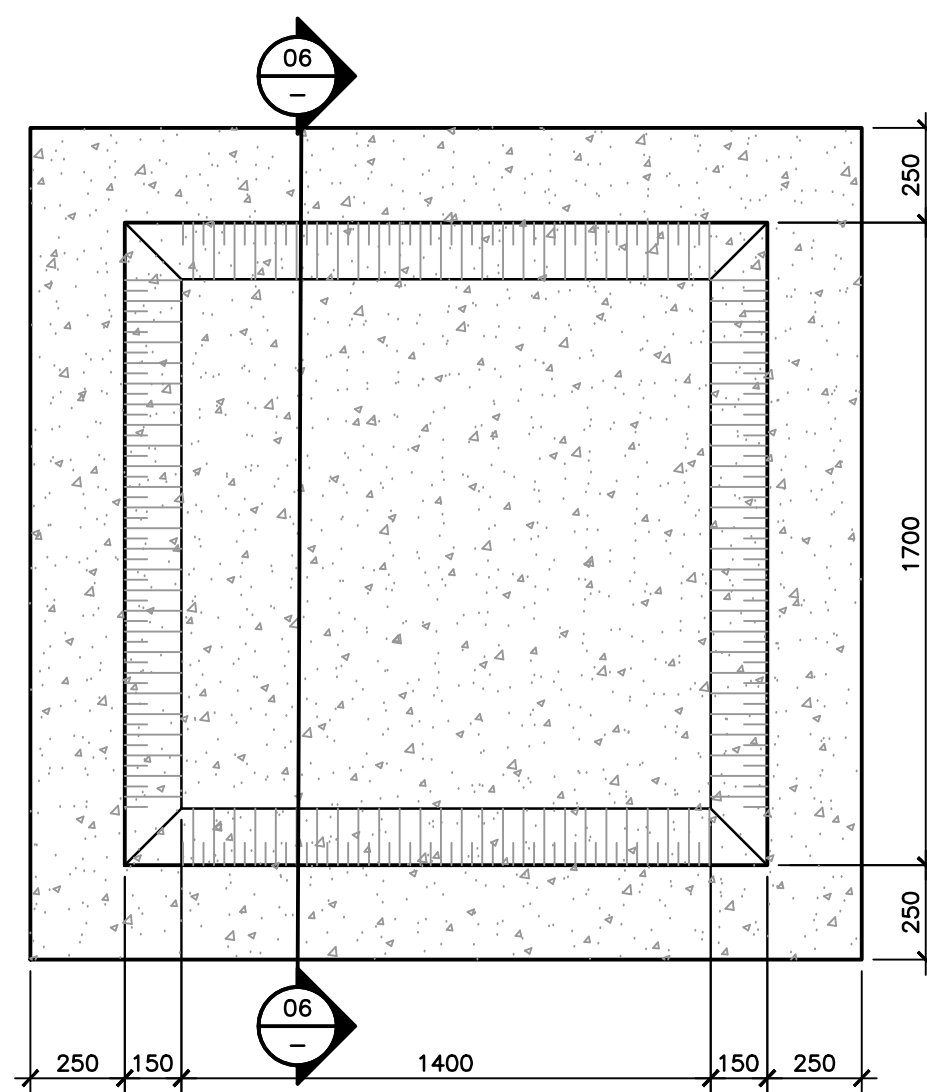


**01 DETAIL**  
—  
ELEVATION  
SAFETY BOOM ASSEMBLY  
SCALE 1:10

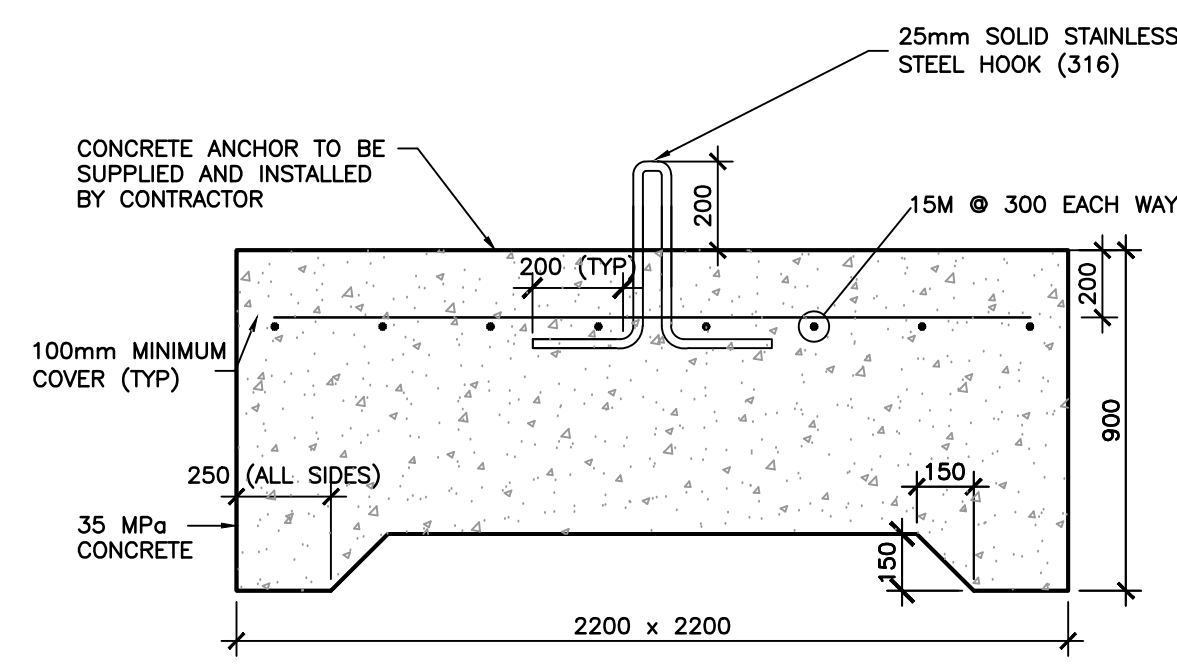


NAME: SAFETY BOOM FLOTATION UNIT  
TYPE: INTERNAL FDM FILL CORE  
SHAPE: CYLINDRICAL  
LENGTH: 3.0M +/- 0.3M EACH  
DIAMETER: 0.4M +/- 0.5M EACH  
GRAPHICS ON FRONT FACE OF ALL UNITS TO ALTERNATE BETWEEN:  
◇ DANGER - DAM AHEAD - KEEP OUT ◇ AND  
◇ DANGER - BARRAGE DEVANT - NE PAS APPROCHER ◇  
GRAPHICS ON REAR FACE OF ALL UNITS TO BE:  
Parcs Parks  
Canada Canada  
COLOUR: YELLOW (FS-13655)  
SUPPLIED BY PCA

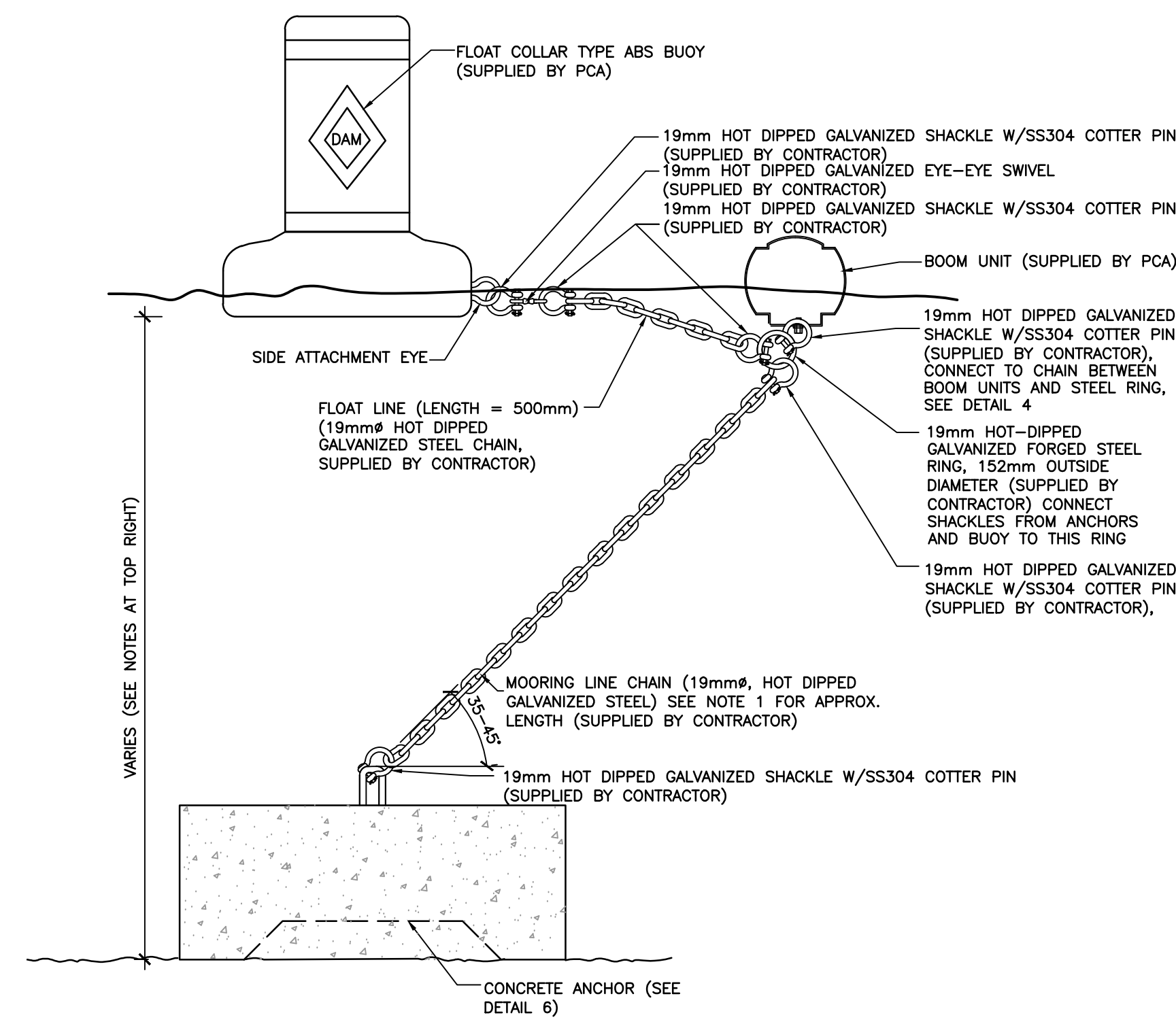
**02 DETAIL - SECTION**  
—  
BOOM FLOTATION UNIT  
SCALE 1:10



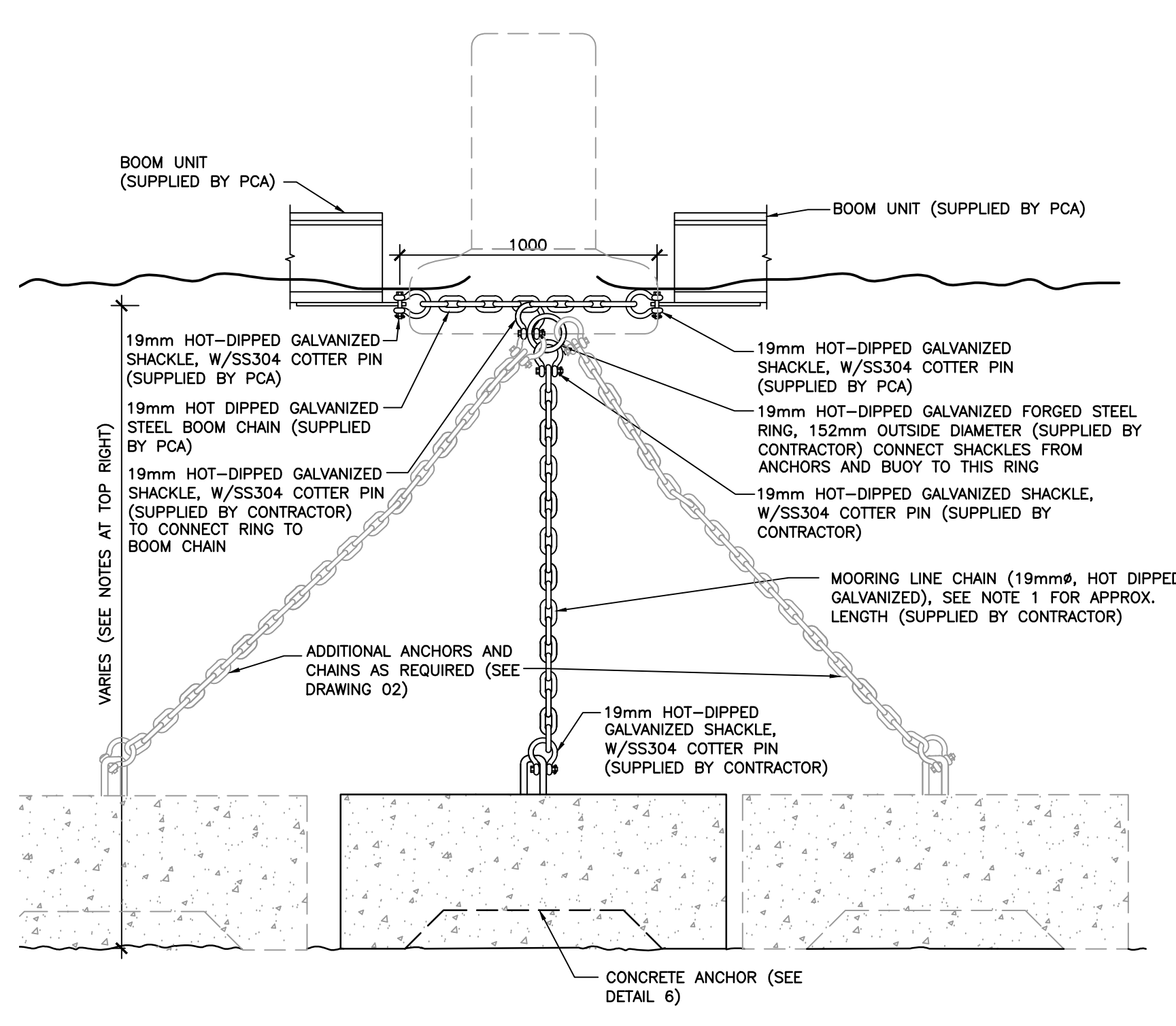
**05 PLAN - UNDERSIDE OF ANCHOR**  
—  
ANCHOR INVERTED SHOWING CAVITY AT BASE  
SCALE 1:20



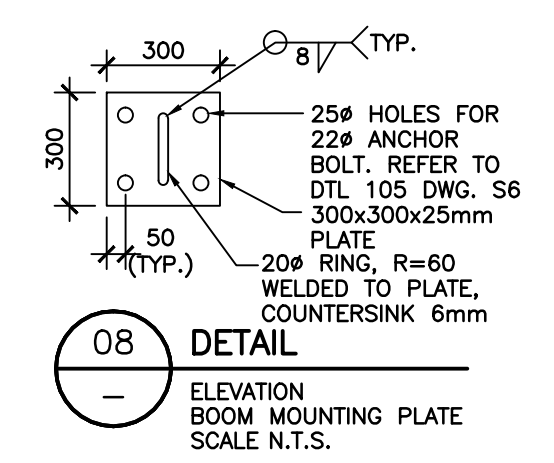
**06 DETAIL - SECTION**  
—  
CONCRETE ANCHOR - IN-WATER  
SCALE 1:20



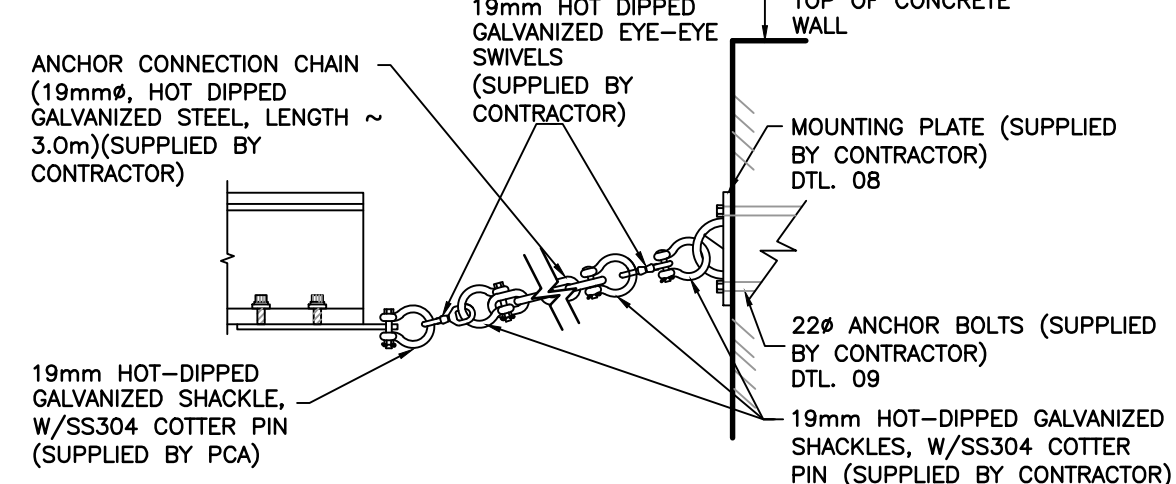
**03 DETAIL**  
—  
ANCHOR-SAFETY BOOM-BUOY CONNECTIONS  
SCALE 1:20



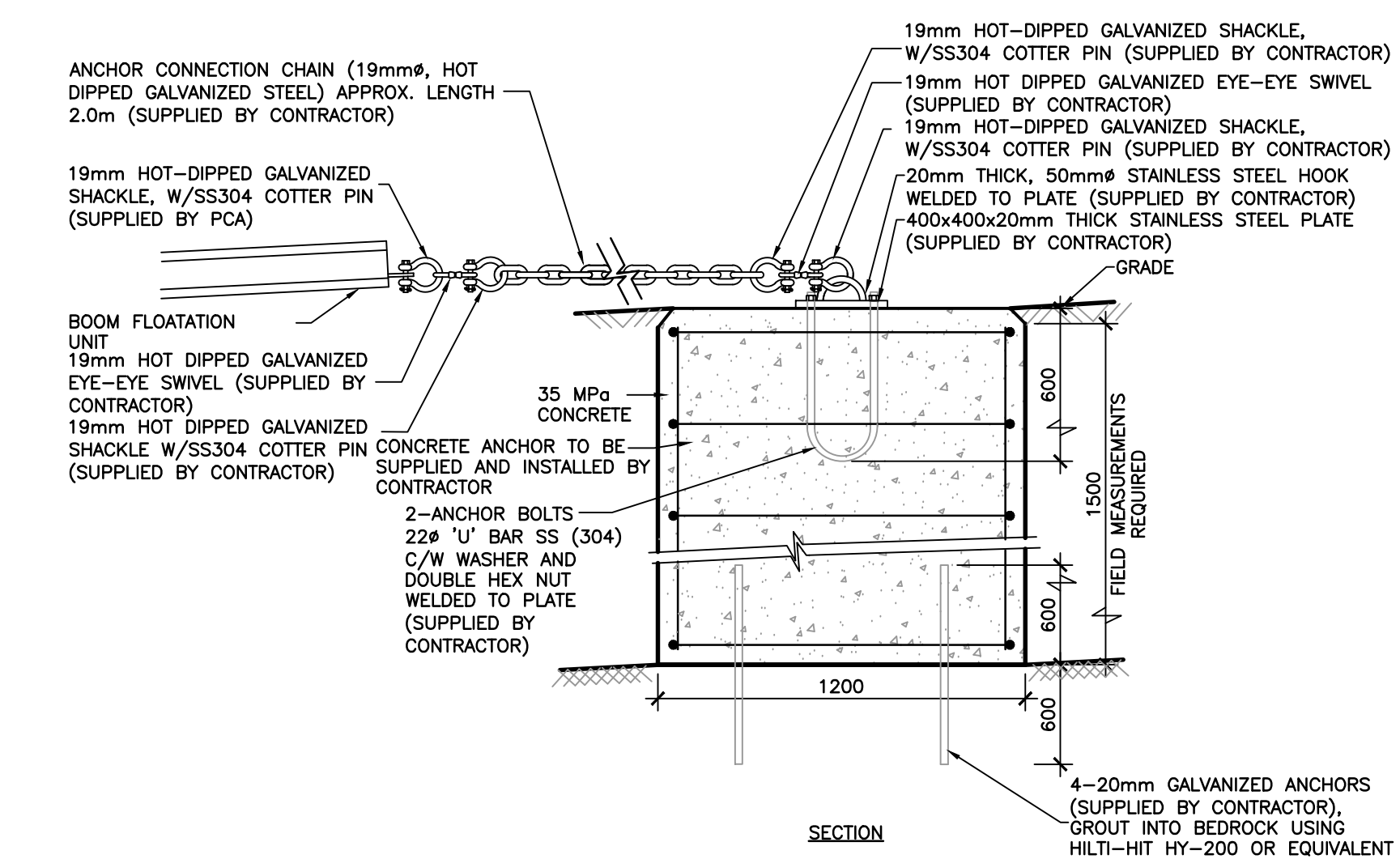
**04 DETAIL**  
—  
ANCHOR-SAFETY BOOM CONNECTION  
SCALE 1:20



**08 DETAIL**  
—  
ELEVATION  
BOOM MOUNTING PLATE  
SCALE N.T.S.



**07 DETAIL**  
—  
BOOM ANCHOR 7  
SECTION  
SCALE N.T.S.



**10 ANCHOR 1 DETAIL - SECTION**  
—  
PLAN & SECTION  
CONCRETE ANCHOR AT SHORE (GROUND)  
SCALE N.T.S.

NOTES RE ANCHOR CHAIN LENGTHS  
1. ANCHORS 2-6  
WATER ELEVATION ~ 186.6m  
ANCHOR 2 ~ ~185.0m AT BASE, LENGTH = 1.2m  
ANCHOR 3 ~ ~184.0m AT BASE, LENGTH = 3.0m  
ANCHOR 4 ~ ~183.4m AT BASE, LENGTH = 4.0m  
ANCHOR 5 ~ ~183.2m AT BASE, LENGTH = 4.4m  
ANCHOR 6 ~ ~182.6m AT BASE, LENGTH = 5.4m  
2. WATER LEVEL VARIES. CONTRACTOR TO MEASURE WATER LEVEL PRIOR TO BOOM INSTALLATION AND ADJUST CHAIN ANGLE OF INCLINATION TO MATCH AS SHOWN ON DETAIL 3.

No.	REVISIONS	Date	By	App.
D	ISSUED FOR REVISION	APR 17 2015	T.M.	WAG
C	ISSUED FOR TENDER	FEB 10 2015	T.M.	WAG
B	ISSUED FOR 99% SUBMISSION	DEC 04 2014	T.M.	WAG
A	ISSUED FOR 66% SUBMISSION	SEPT 29 2014	T.M.	WAG



**exp Services Inc.**  
t: +1.905.793.9800 | f: +1.905.793.0641  
1595 Clark Boulevard  
Brampton, ON L6T 4V1  
Canada  
www.exp.com

**exp.**

- BUILDINGS • EARTH & ENVIRONMENT • ENERGY •
- INDUSTRIAL • INFRASTRUCTURE • SUSTAINABILITY •

Owner/Client: Parcs Canada Parks Canada

**Canada**

Location: 4 BRIDGE STREET N., VILLAGE OF HASTINGS, NORTHUMBERLAND COUNTY, ONTARIO

HASTINGS DAM SAFETY BOOM MISCELLANEOUS DETAILS

CAD File: BRM00605127a-HAS-03-RD	Base File:
Designed By: T.M.	Drawn By: T.M.
Scale: AS NOTED	Date: JUNE 2014
Dam No.:	Project No.: BRM00605127a
	Checked By: W.A.G.
	Drawing No.: HAS-03