

ELECTRICAL SYMBOL LEGEND	
WP	WEATHER PROOF
	CEILING SUSPENDED LINEAR LUMINAIRE
	WALL MOUNTED DOWN LIGHT
	THREE WAY TOGGLE SWITCH
	EXIT SIGN WITH BUILT-IN DUAL EMERGENCY HEADS AND BATTERY PACK
	DUAL EMERGENCY HEADS COMPLETE WITH SELF CONTAINED BATTERY PACK, CEILING MOUNTED
	DUPLEX RECEPTACLE
	GROUND FAULT INTERRUPTER DUPLEX RECEPTACLE
	MECHANICAL MOTOR CONNECTION
	PANEL BOARD
	PUSH BUTTON
	LIGHTING TIMER
	HIGH BAY OCCUPANCY SENSOR, LINE VOLTAGE
	LIGHTING PHOTOCELL

NOTES

- PROVIDE NEW 70A 2P BREAKER ON EXISTING PANEL 'C' ON 2ND FLOOR OF CSB BUILDING. NEW BREAKER IS TO REPLACE EXISTING 30A 2P WHICH CURRENTLY FEEDS EXISTING SAND SHED.
- REMOVE EXISTING CONDUCTORS FEEDING EXISTING SHED. PROVIDE APPROXIMATELY 83m OF NEW 3C #1 AND GROUND Cu. TECK FROM NEW 70A 2P BREAKER ON EXISTING PANEL 'C' TO NEW PANEL 'A' IN SAND SHED.
- PROVIDE ELECTRICAL PANEL COMPLETE WITH MAIN BREAKER AS INDICATED IN THE PANEL SCHEDULE.
- PROVIDE POWER CONNECTION FOR TWO OVERHEAD DOORS. COORDINATE ELECTRICAL REQUIREMENTS WITH EQUIPMENT SUPPLIER.
- PROVIDE EXTERIOR WALL MOUNTED LUMINAIRES (TYPE 'A') AT OVERHEAD DOORS AND MAN DOORS. EXTERIOR LIGHTING CONTROL BY PHOTOCELL AND TIMECLOCK.
- PROVIDE FLUORESCENT, HIGH-BAY SUSPENDED LUMINAIRES (TYPE 'B'). COORDINATE LAYOUT WITH OVERHEAD DOORS.
- COMPLY WITH ALL REQUIREMENTS OF THE CANADIAN ELECTRICAL CODE.
- PROVIDE EXIT AND EMERGENCY LIGHTING TO OPERATE AUTOMATICALLY AND IMMEDIATELY UPON FAILURE OF NORMAL POWER SUPPLY.
- PROVIDE HIGH BAY OCCUPANCY SENSORS TO TURN OFF ALL LIGHTING WITHIN 30 MINUTES OF ALL OCCUPANTS LEAVING A SPACE.
- OVERHEAD DOOR OPERATOR TO BE 208/240V, 1PH, 2P, 1HP.
- REMOVE ALL EXISTING ELECTRICAL DEVICES FROM THE EXISTING BUILDING AND RECYCLE THEM ACCORDING TO ACCEPTABLE STANDARDS SET FORTH BY THE LOCAL AUTHORITY HAVING JURISDICTION. DEVICES MAY INCLUDE BUT ARE NOT LIMITED TO:
 - THREE HIGH BAY LUMINAIRES
 - EXISTING PANEL BOARD
 - THERMOSTAT

CODE LOAD CALCULATION

$$173m^2 \times 5w/m^2 = 865W \text{ BASIC ALLOWANCE FOR STORAGE FACILITY}$$

$$= 3660W \text{ DOOR OPENERS (2x1HP)}$$

$$= 7200W \text{ 30A 2P RECEPTACLE @ 208V}$$

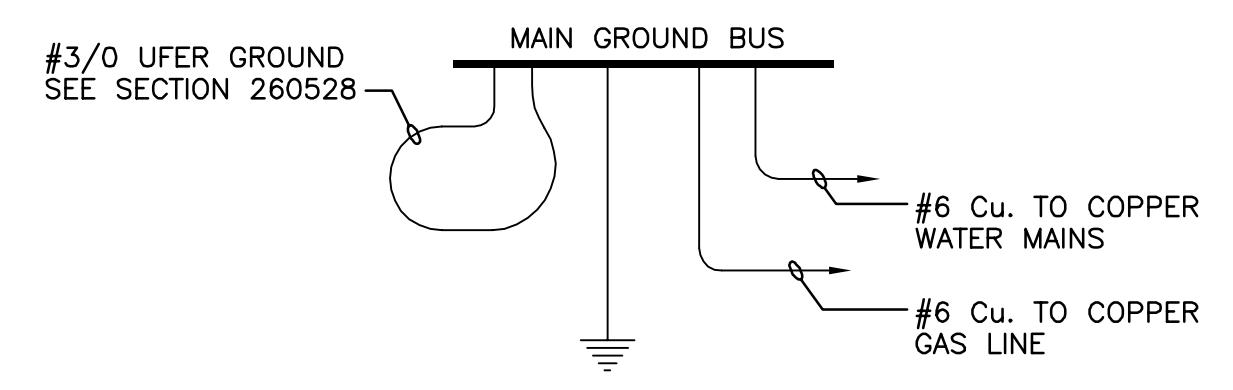
$$11725W @ 208V 1PH = 56A \times 1.25 = 70A$$

USE 70A 1PH BREAKER

PANELBOARD SCHEDULE

JOB NO./NAME : 1-13-249/TRANSPORT CANADA SANDSPIT AIRPORT							
PANEL : A							
SYSTEM : 120/208V, 1φ, 3W							
TYPE : -							
LOCATION : STORAGE SHED							
MOUNTING : SURFACE							
NO. CIRCUITS : 24							
BUS SIZE : 100A							
SYM. FAULT RATING : 10KAIC							
DESCRIPTION	BRK	POLE	CCT	CCT	POLE	BRK	DESCRIPTION
EXTERIOR RECEPTACLES	15	1	01	02	1	15	EXTERIOR RECEPTACLES
INTERIOR RECEPTACLES	15	1	03	04	1	15	INTERIOR RECEPTACLES
HIGH BAY FLUORESCENT	15	1	05	06	1	15	EXTERIOR WALL PACKS
EXIT LIGHTS	15	1	07	08	1	15	LIGHTING TIMER
MOBILE UNIT	30	2	09	10	1	15	SPARE
			11	12	1	15	SPARE
SPARE	15	1	13	14	1	15	SPARE
SPARE	15	1	15	16	1	15	SPARE
SPARE	15	1	17	18	1	15	SPARE
SPARE	15	1	19	20	1	15	SPARE
DOOR OPERATOR	30	2	21	22	2	30	DOOR OPERATOR
			23	24			
PANEL C/W 70A-2P MAIN BREAKER							

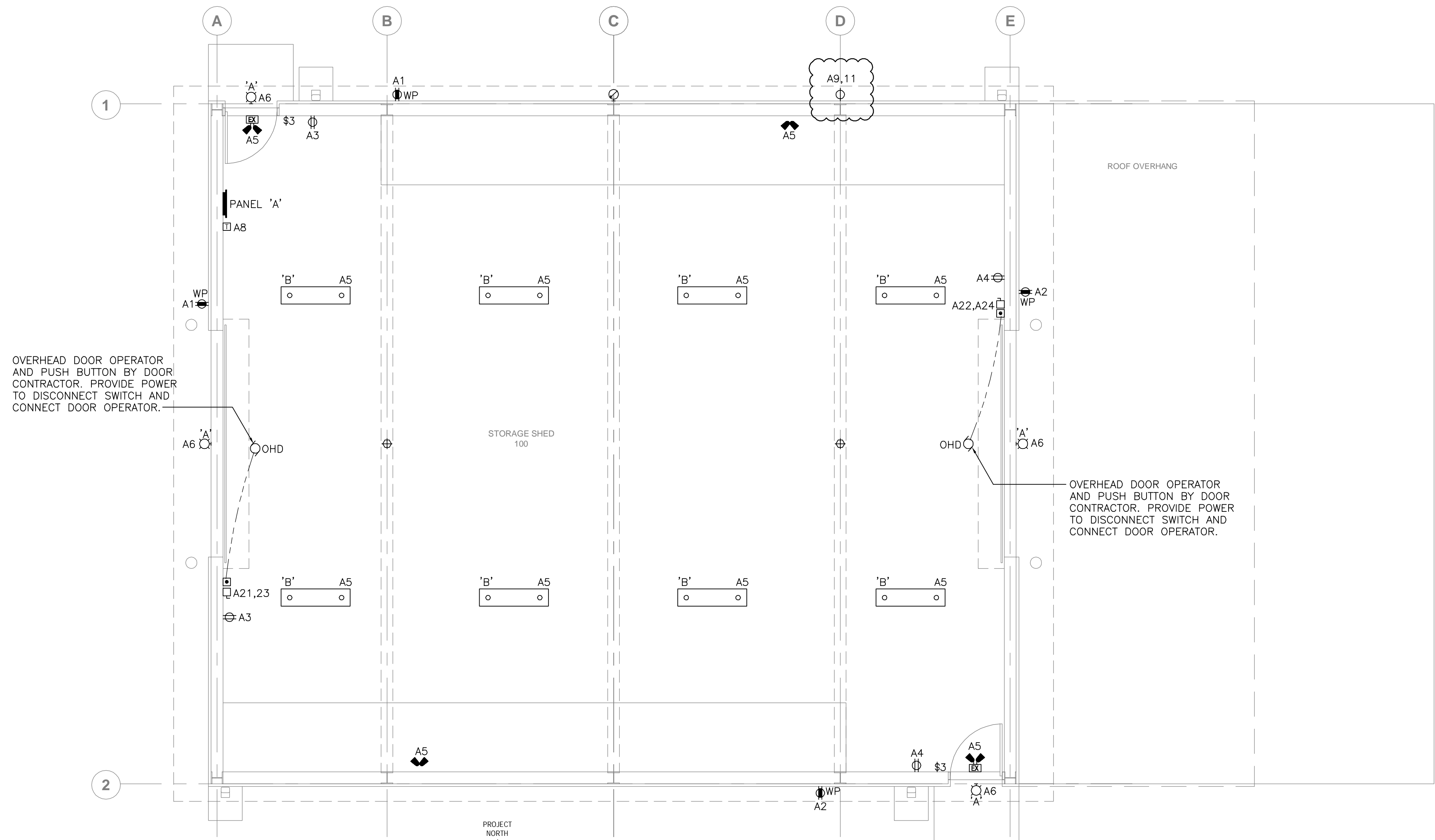
GROUNDING DETAIL
SCALE NTS



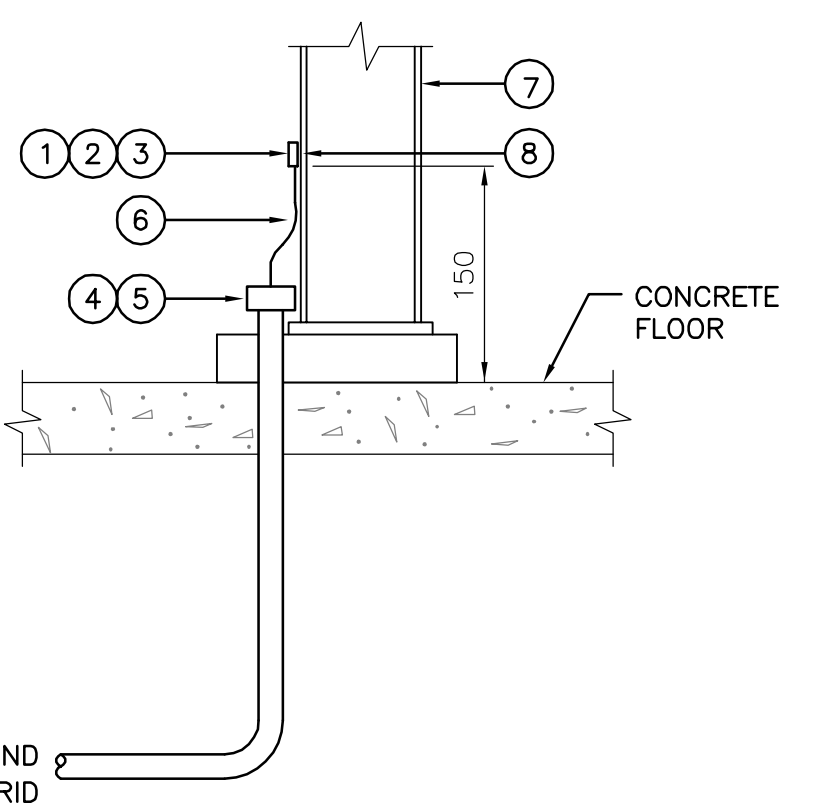
LUMINAIRE SCHEDULE

TYPE	LAMPS	DESCRIPTION
A	18W LED 5000°K (1600lm)	MARINE GRADE LED WALL PACK, MOUNTED +5500mm ABOVE GROUND
B	2x54W T5HO (4500lm)	304mm x 1219mm HIGH BAY, MOUNTING HEIGHT +5000mm ABOVE GROUND, COMPLETE WITH WIRE GUARD

FLOOR PLAN ELECTRICAL LAYOUT
SCALE 1:50



ITEM	QTY	DESCRIPTION
1	1	ONE-HOLE LUG
2	1	LOCKWASHER 7.9mm
3	1	BOLT 7.9mm W/ NUT
4	AS REQD	CONDUIT 25.4mm
5	1	25.4mm CONDUIT STRAP
6		GROUND CONDUCTOR C/W GREEN INSULATION
7		STRUCTURAL STEEL
8		FIELD DRILL COLUMN



STRUCTURAL STEEL GROUNDING
SCALE NTS

Client/client

SANDSPIT AIRPORT SAND SHED REPLACEMENT

Approved by/Approve par

Consultant Signature Only

Designed by/Concept par
PB

Drawn by/Dessine par
NH

PWGC Project Manager/Administrateur de Projets TPSGC
TOM DUNPHY

PWGC, Regional Manager, Architectural and Engineering Services/
Gestionnaire régionale, Services d'architectural et de génie, TPSGC
PREETIPAL PAUL

Drawing title/Titre du dessin

ELECTRICAL LAYOUT, LEGEND AND SCHEDULES

Project No./No. du projet

R.063974.001

Sheet/Feuille

E100

OF 1

Revision no./La Révision no.

2