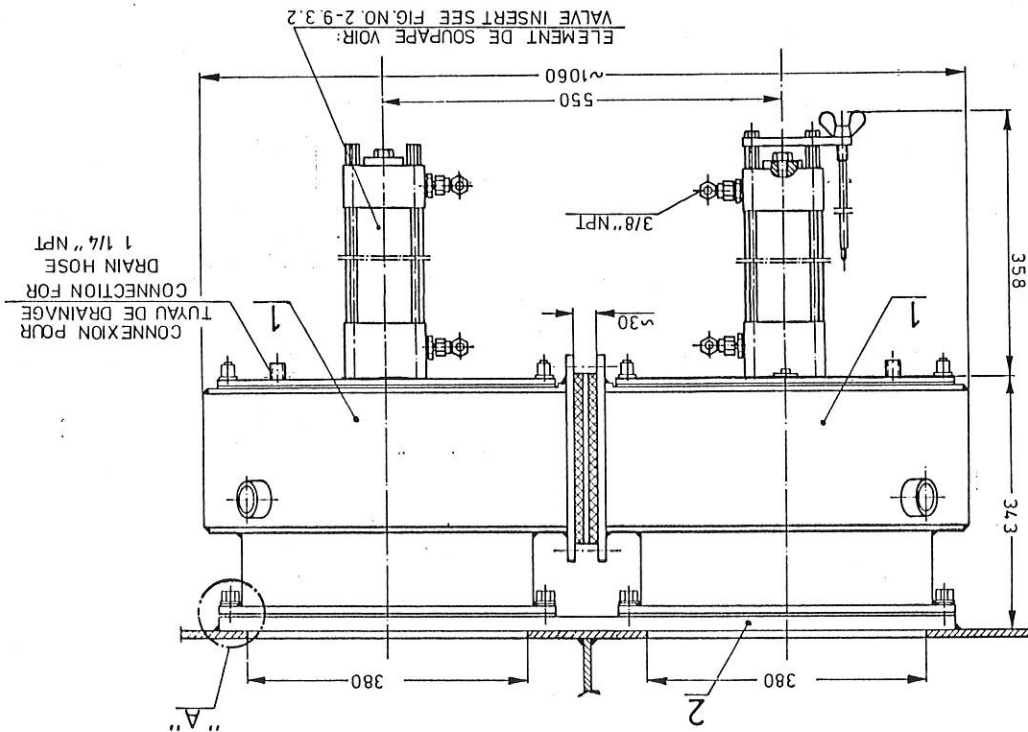
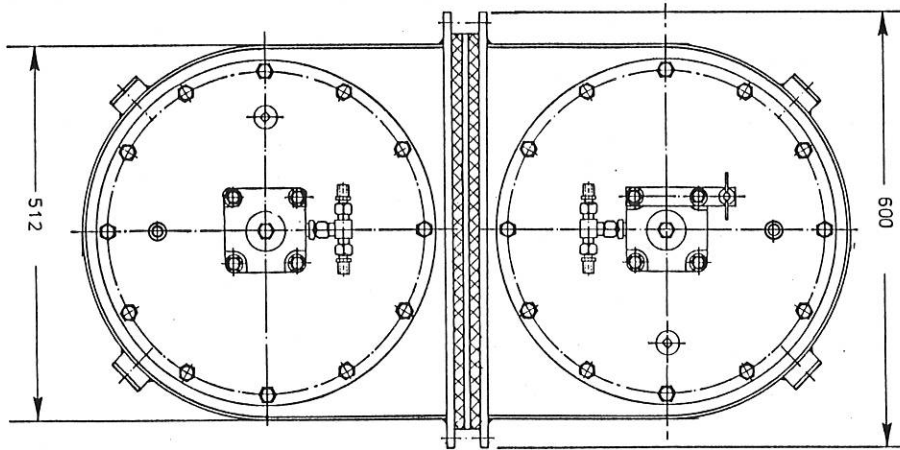
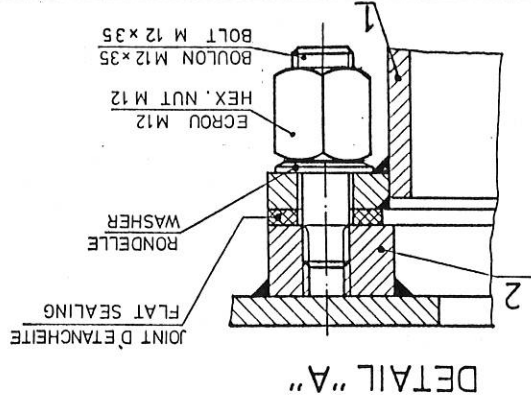


MASSSTAB GEZEICHN. DATUM 50. 18.10.80 GEPÜFT 4.20.009 LAGERNUMMER 4.20.010	SOUPAPE PRINCIPALE STABILISATEUR MAIN VALVE SG 2 TWIN VALVE - STABILIZER - HANGING VERSION ENTSTANDEN AUS: 1126 8.58	INTERING STROMPFAD REF. 1126 GRUPPE INTERING REF. NUMMER 02 - 226.1
--	--	--

FIG. 2-1

- 1 SOUPAPE PRINCIPALE SG 1  
 MAIN VALVE SG 1  
 Z. NR. 02 - 225.1  
 2 BRIDE SOUDEE  
 BACK FLANGE  
 PART 2/8  
 Z. NR. 02 - 227

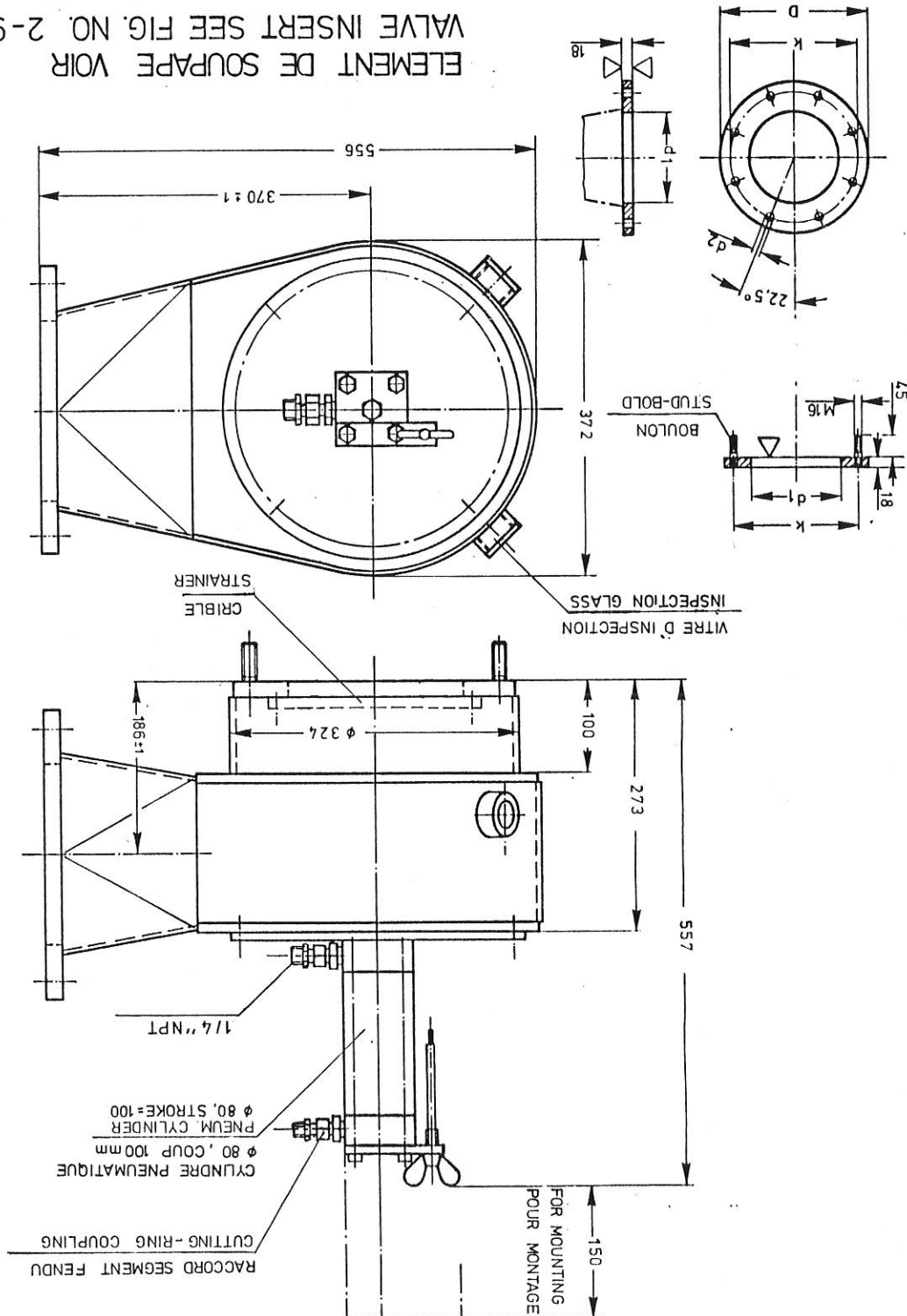


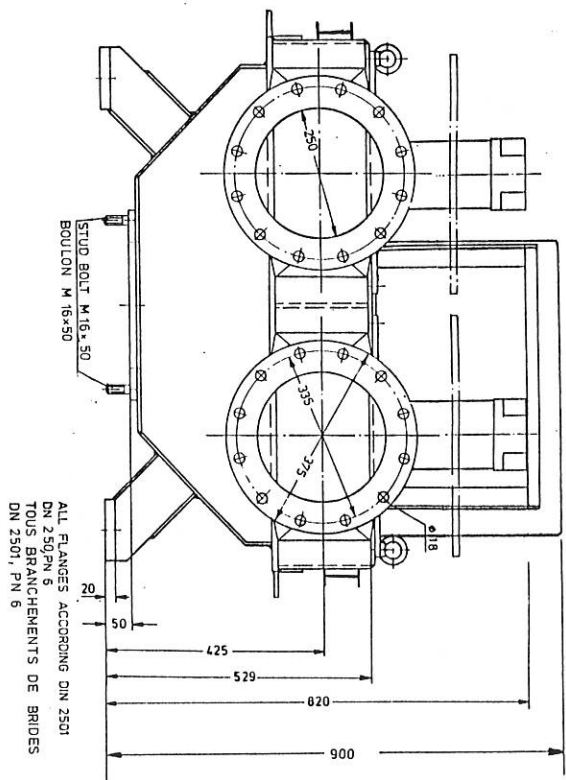
3 12 84 Sd A		1126 81 Sd ENTSTANDEN AUS:	
MASSSTAB	GEZEICHN. DATUM	GRUPPE	NUMMER
GEPROBT	16.7.84	INTERING REF.	02-209.1
LAGERNUMMER	81	STROMFAD	REF.
SOUPAPE PRINCIPALE "03" DN 200 MAIN VALVE "03" DN 200 GITE BRISE GLACE / ICE-HEELING		INTERING	

PN 6 ACCORDING DIN 2501		200	200	200	280	8	M 16	18	420017
TUYAU PIPE DN	BRIDE FLANGE d <sub>1</sub> D k	150	150	150	265	225	SCREWS/ VIS FILET THREAD d <sub>2</sub>	420016 420015	STOCK NO.
		100	100	100	210	170			
		100	100	100	210	170			

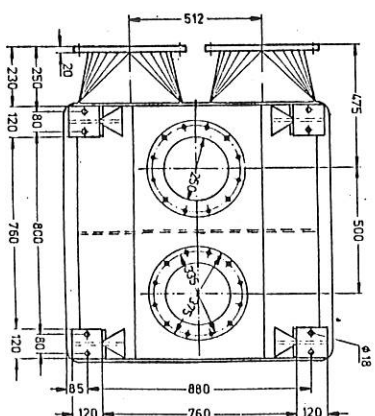
FIG. 2-2

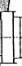

ELEMENT DE SOUPAPE VOIR  
 VALVE INSERT SEE FIG. NO. 2-9.4





VIEW "H"  
SCALE 1:20 M. 1:20



MODIFICATION		 	
D			
C			
B			
A			
DESIGNER: 13A11M		DATE: 11/01/01	
DRAWN BY: KU		INAME: DMT	
CHECKED: 11/7/85			
GROUP: 01, 02 VALVEGROUP: 01, 02 DN 250, DE-HEELING			
LAGERNUMBER / STOCK NO. : 420033 ORDER NUMBER : 02-2011		WITTING REF: 1126 BLATT / SHEET: 1	