
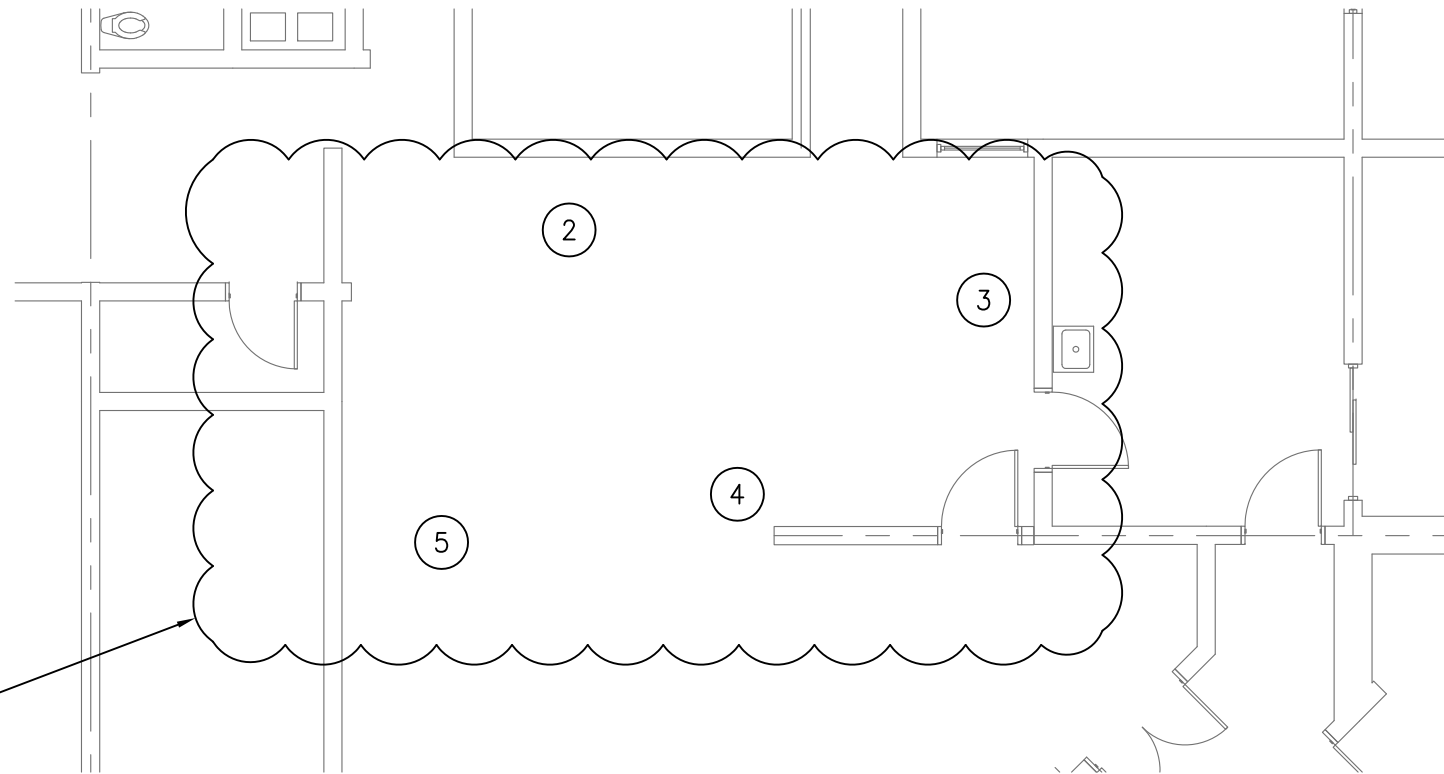


NOTE:  
READ IN CONJUNCTION WITH WITH DRAWING E1

|  |         |            |  |  |           |
|--|---------|------------|--|--|-----------|
|  <b>SNC-LAVALIN</b><br>Wiebe Forest | DESIGN  | JP         | LAKE LOUISE COMPOUND HEATING<br>AND VENTILATION SYSTEM UPGRADE | SCALE                                  | 1:100     |
|  | DRAWN   | TB         |  | PARTIAL FIRST FLOOR ELECTRICAL<br>PLAN | SKETCH NO |
|  | DATE    | 2015-05-21 |  |  |           |
|  | FILE NO | -          |  |  |           |




LINE VOLTAGE SOLENOID VALVES REMOVED

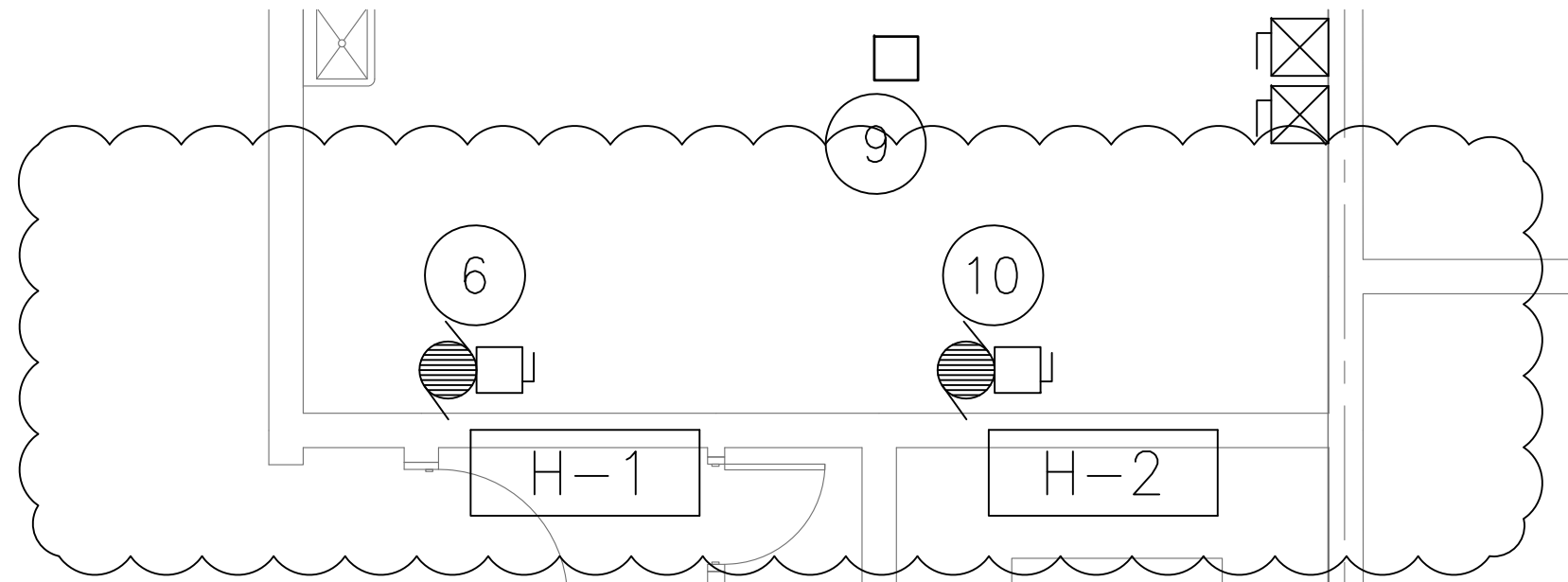
**RENOVATION KEY NOTES**

REMOVE KEY NOTES 2-5 FROM SCOPE OF WORK

- ① NEW WATER SOFTENER WS-1 TO BE FED FROM 1P 120V CIRCUIT FROM THE NEAREST 120V PANEL. REFER TO MECHANICAL EQUIPMENT SCHEDULE ON DWG E3.0.
- ② PROVIDE 120V 1P-15A CIRCUIT FROM THE NEAREST 120V PANEL TO NEW RHC-5 SOLENOID VALVE.
- ③ PROVIDE 120V 1P-15A CIRCUIT FROM THE NEAREST 120V PANEL TO NEW RHC-6 SOLENOID VALVE.
- ④ PROVIDE 120V 1P-15A CIRCUIT FROM THE NEAREST 120V PANEL TO NEW RHC-7 SOLENOID VALVE.
- ⑤ PROVIDE 120V 1P-15A CIRCUIT FROM THE NEAREST 120V PANEL TO NEW RHC-8 SOLENOID VALVE.

NOTE:  
READ IN CONJUNCTION WITH WITH DRAWING E1


|  |         |            |   |                                     |           |
|--|---------|------------|---|-------------------------------------|-----------|
|  <b>SNC-LAVALIN</b><br>Wiebe Forest | DESIGN  | JP         | LAKE LOUISE COMPOUND HEATING AND VENTILATION SYSTEM UPGRADE | SCALE                               | 1:100     |
|  | DRAWN   | TB         |   | PARTIAL FIRST FLOOR ELECTRICAL PLAN | SKETCH NO |
|  | DATE    | 2015-05-21 |   |                                     |           |
|  | FILE NO | -          |   |                                     |           |



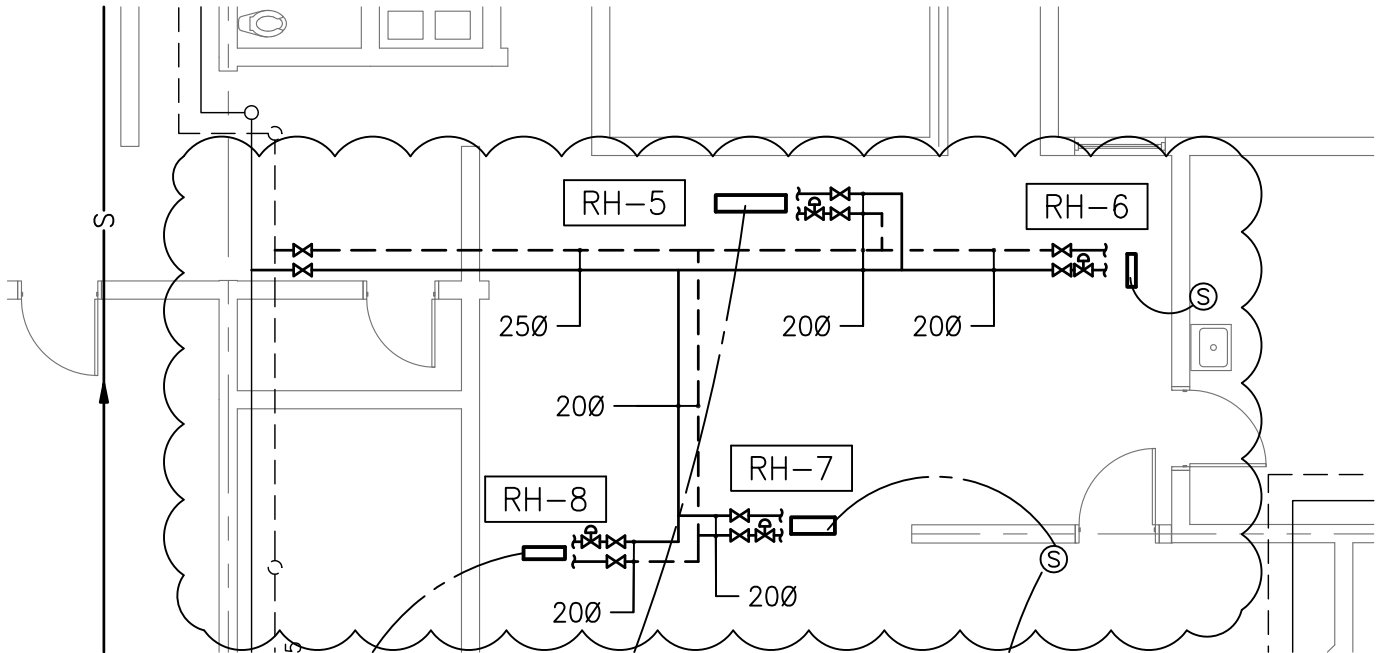
**RENOVATION KEY NOTES**

- ① NEW PUMPS P-1 AND P-2 TO BE FED FROM 3P-40A CIRCUIT BREAKERS EACH FROM THE NEAREST 208V PANEL. USE 3#10 AND 1#10 GND IN 21mmC. ELECTRICAL CONTRACTOR TO PROVIDE AND INSTALL NEW 40A DISCONNECTS, WIRING AND CONDUIT TO P-1 AND P-2.
- ② NEW PUMPS P-3 AND P-4 TO BE FED FROM 1P-20A CIRCUIT BREAKERS EACH FROM THE NEAREST 120V PANEL. USE 2#12 AND 1#14 GND IN 21mmC. ELECTRICAL CONTRACTOR TO PROVIDE AND INSTALL WIRING AND CONDUIT FROM P-3 AND P-4 TO EXISTING 30A DISCONNECTS.
- ③ NEW BOILERS B-1 AND B-2 TO BE FED FROM 1P-15A CIRCUIT BREAKER EACH FROM THE NEAREST 120V PANEL. USE 2#12 AND 1#14 GND IN 21mmC.
- ④ NEW AHU-1 TO BE FED FROM 3P-20A CIRCUIT BREAKER FROM THE NEAREST 208V PANEL. USE 3#12 AND 1#14 GND IN 21mmC.
- ⑤ NEW RETURN FAN RF-1 TO BE FED FROM 3P-15A CIRCUIT BREAKER FROM THE NEAREST 208V PANEL. USE 3#12 AND 1#14 GND IN 21mmC.
- ⑥ NEW HUMIDIFIER H-1 TO BE FED FROM 1P-15A CIRCUIT BREAKER FROM THE NEAREST 120V PANEL. USE 2#12 AND 1#14 GND IN 21mmC.
- ⑦ NEW DOMESTIC HOT WATER PUMP DWH-1 TO BE FED FROM 1P-15A CIRCUIT BREAKER FROM THE NEAREST 120V PANEL. USE 2#12 AND 1#14 GND IN 21mmC.
- ⑧ NEW GLYCOL FILL TANK PUMP TK-4 TO BE FED FROM 1P-20A CIRCUIT BREAKER FROM THE NEAREST 120V PANEL. USE 2#12 AND 1#14 GND IN 21mmC.
- ⑨ REUSE EXISTING WIRING AND CONDUIT TO RECONNECT NEW HEATING COIL HC-2. CIRCUIT SHALL BE 1P-15A-120V. ELECTRICAL CONTRACTOR TO VERIFY EXISTING MATCH SPEC'S.
- ⑩ EXISTING HUMIDIFIER TO REMAIN.

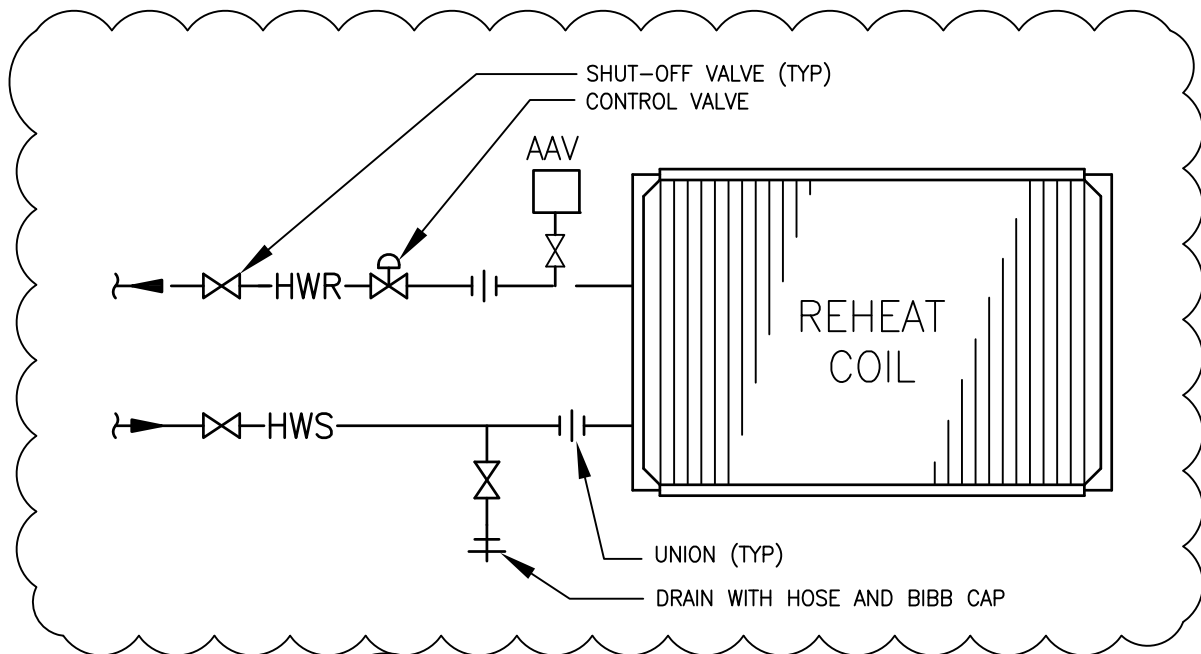
NOTE:  
READ IN CONJUNCTION WITH WITH DRAWING E2

|   |         |            |   |                                      |           |
|---|---------|------------|---|--------------------------------------|-----------|
|  | DESIGN  | JP         | LAKE LOUISE COMPOUND HEATING AND VENTILATION SYSTEM UPGRADE | SCALE                                | 1:50      |
|   | DRAWN   | TB         |   | PARTIAL SECOND FLOOR ELECTRICAL PLAN | SKETCH NO |
|   | DATE    | 2015-05-21 |   |                                      |           |
|   | FILE NO | -          |   |                                      |           |


NOTE:  
 READ IN CONJUNCTION WITH WITH DRAWING M2



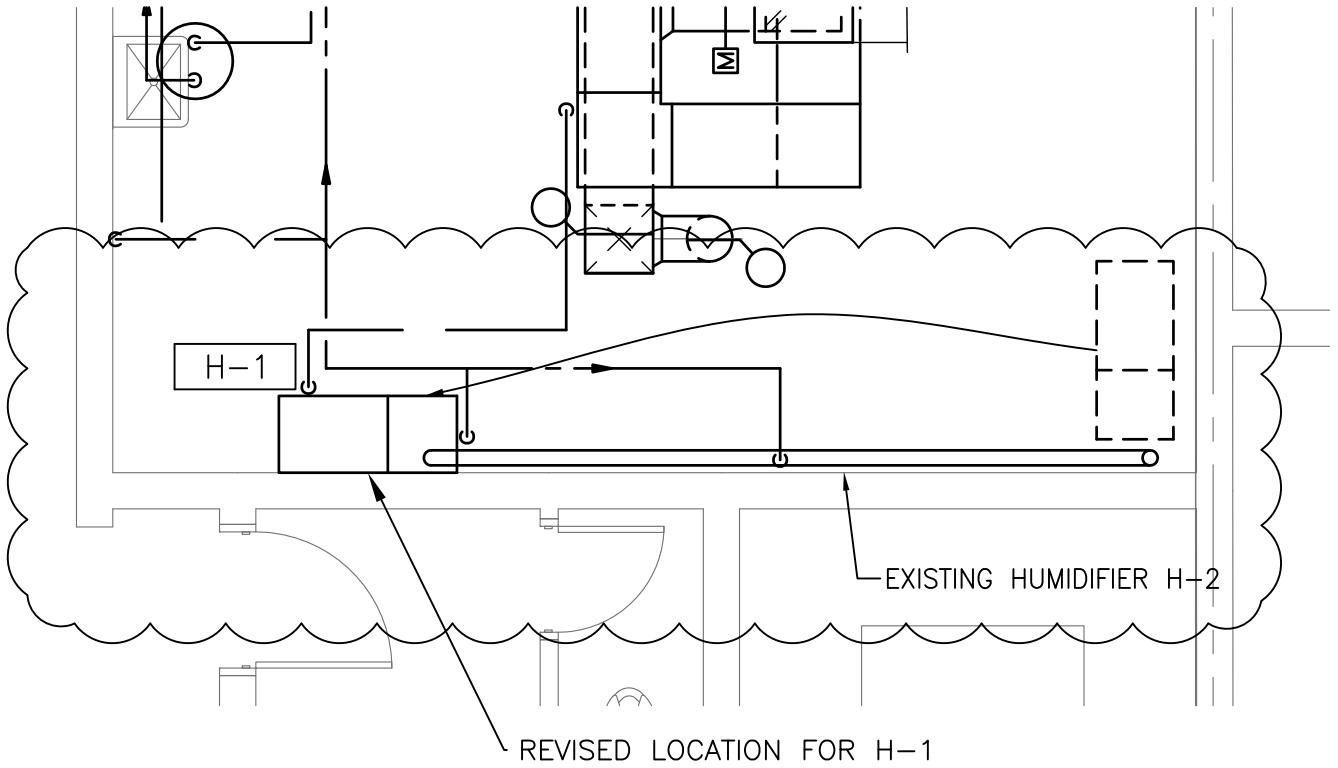
1 PARTIAL FIRST FLOOR PLAN  
 SKM-2.1 SCALE: 1:100




2 REHEAT COIL PIPING DETAIL  
 SKM-2.1 SCALE: NTS

|   |         |            |   |                |
|---|---------|------------|---|----------------|
|  <b>SNC-LAVALIN</b><br><b>Wiebe Forest</b> | DESIGN  | JP         | LAKE LOUISE COMPOUND HEATING AND VENTILATION SYSTEM UPGRADE | SCALE<br>1:100 |
|   | DRAWN   | TB         |   | SKETCH NO      |
|   | DATE    | 2015-05-21 | PARTIAL MECHANICAL FIRST FLOOR RENOVATION                   | <b>SKM-2.1</b> |
|   | FILE NO | -          |   |                |

NOTE:  
 READ IN CONJUNCTION WITH WITH DRAWING M3



|   |         |            |  |                           |                |
|---|---------|------------|--|---------------------------|----------------|
|  <b>SNC-LAVALIN</b><br><b>Wiebe Forest</b> | DESIGN  | JP         | LAKE LOUISE COMPOUND HEATING<br>AND VENTILATION SYSTEM UPGRADE | SCALE                     | 1:100          |
|   | DRAWN   | TB         |  | PARTIAL SECOND FLOOR PLAN | SKETCH NO      |
|   | DATE    | 2015-05-21 |  |                           | <b>SKM-3.1</b> |
|   | FILE NO | -          |  |                           |                |