
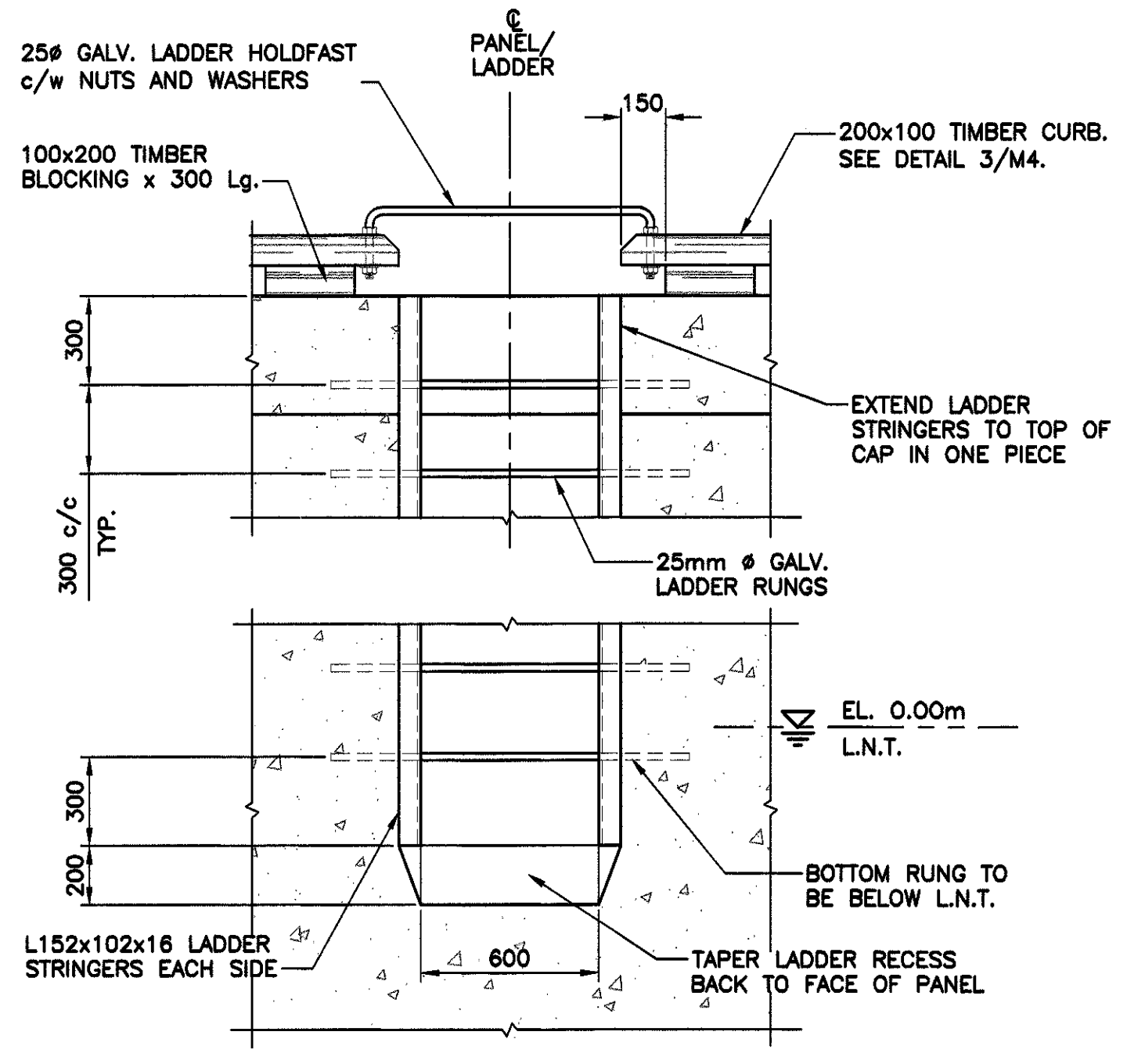
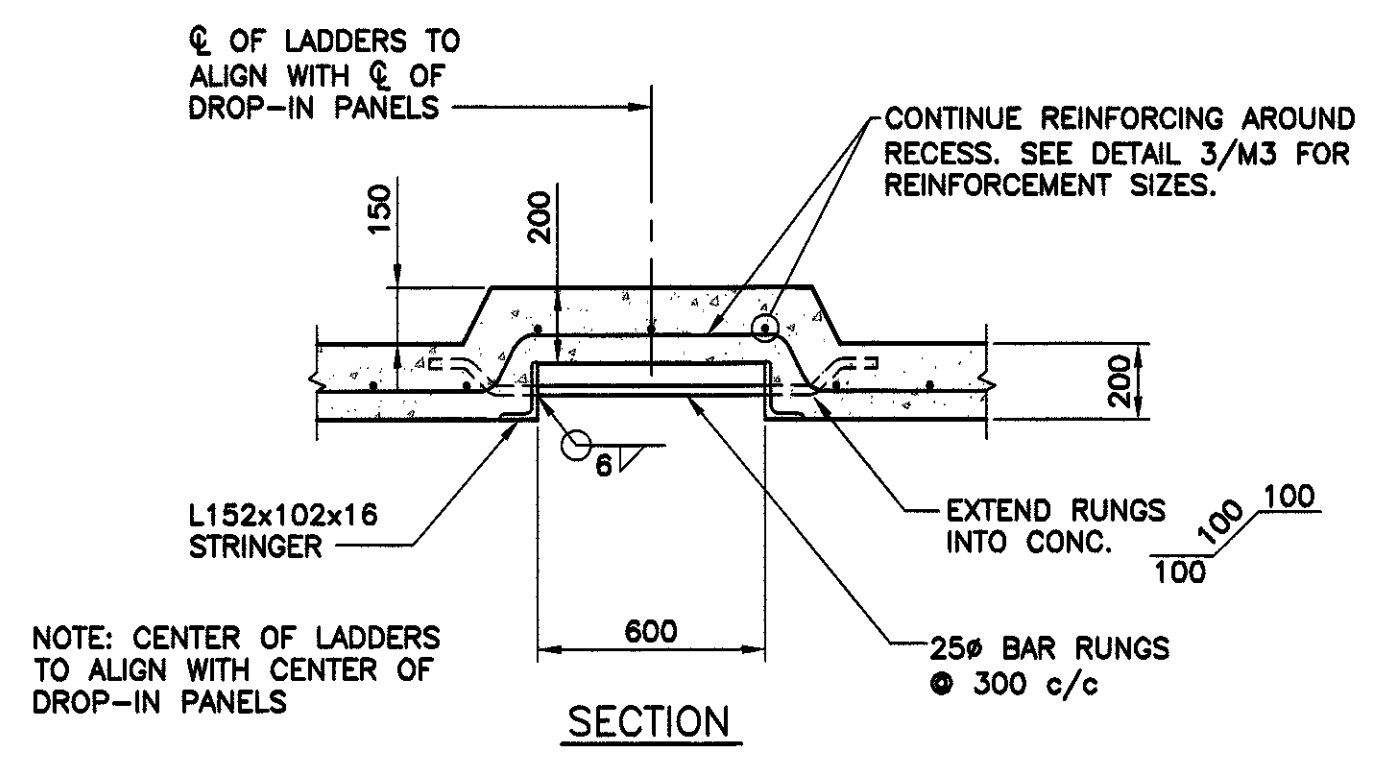


NOTES:

revisions		date
project	project	
HOWARD'S COVE WHARF REPAIR		
PRINCE COUNTY, PEI		
drawing	dessin	
TYPICAL SECTIONS AND DETAILS		
designed	W. ENMAN	conçu
date	NOV. 2014	
drawn	R. LYNCH	dessiné
date	NOV. 2014	
approved		approuvé
date		
Tender		Soumission
PWSC Project Manager	Administrateur de projets TPSGC	
project number	no. du projet	
R.076439.001		
drawing no.	no. du dessin	
M4 of 7		

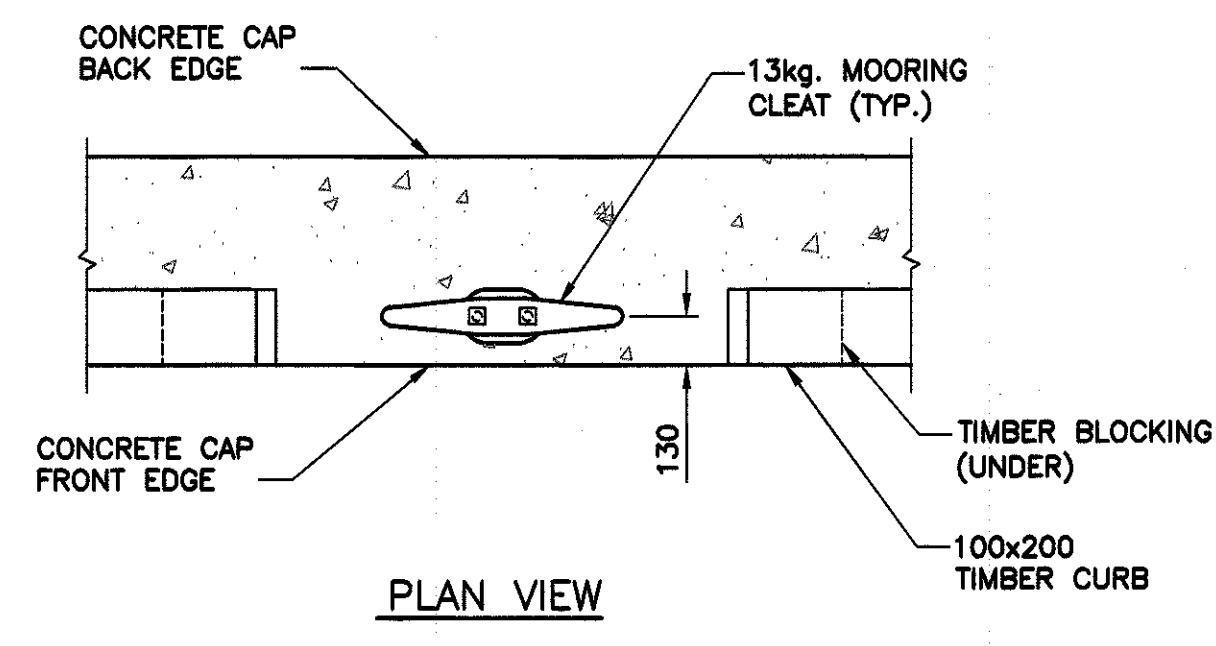


ELEVATION

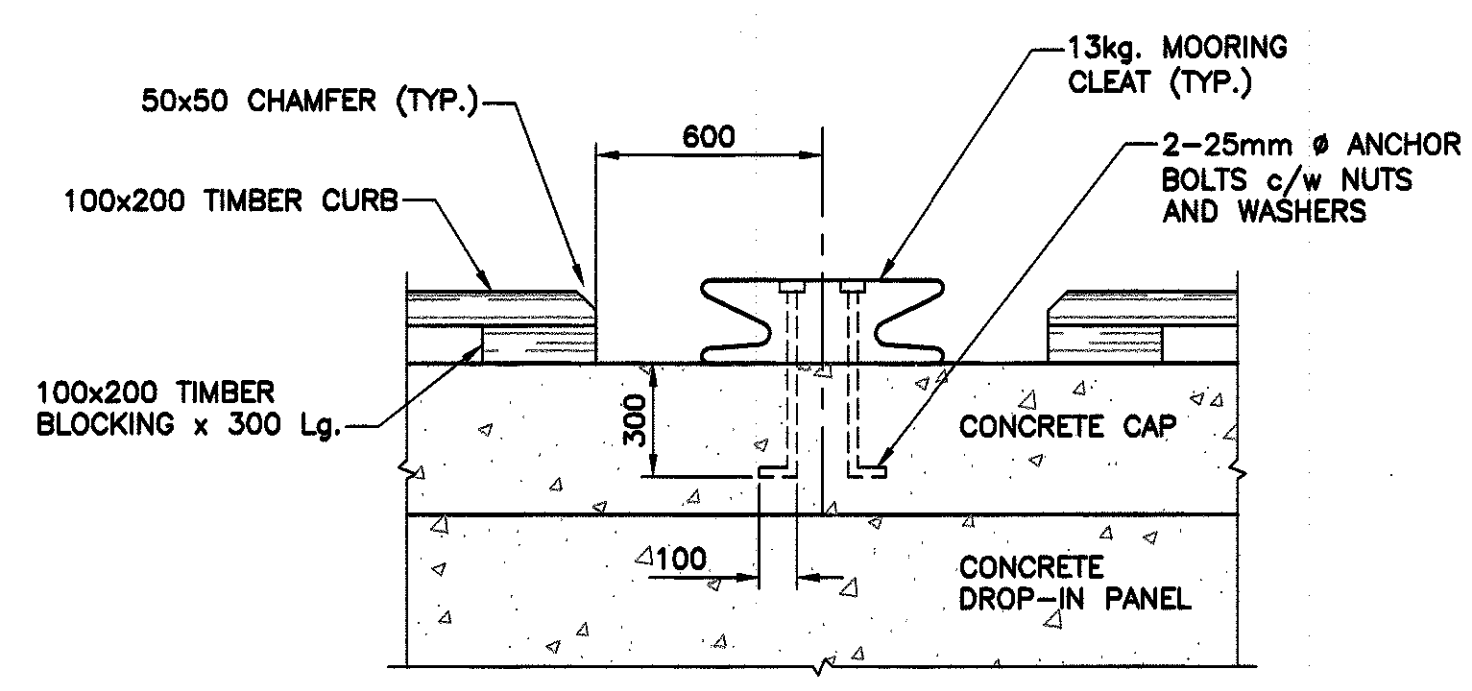


SECTION

TYPICAL LADDER DETAIL
SCALE : 1:20
1 M4

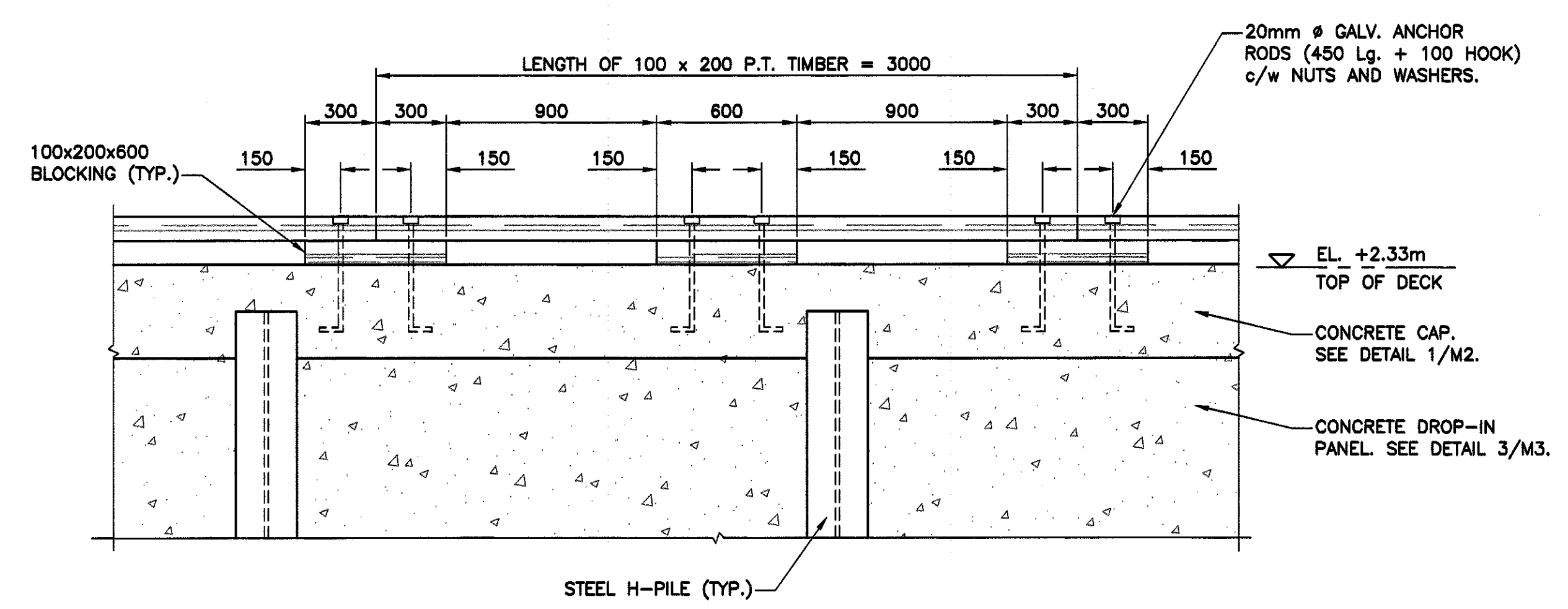


PLAN VIEW



ELEVATION

TYPICAL MOORING CLEAT DETAIL
SCALE : 1:20
2 M4



TYPICAL TIMBER CURB DETAIL

SCALE : 1:20
3 M4