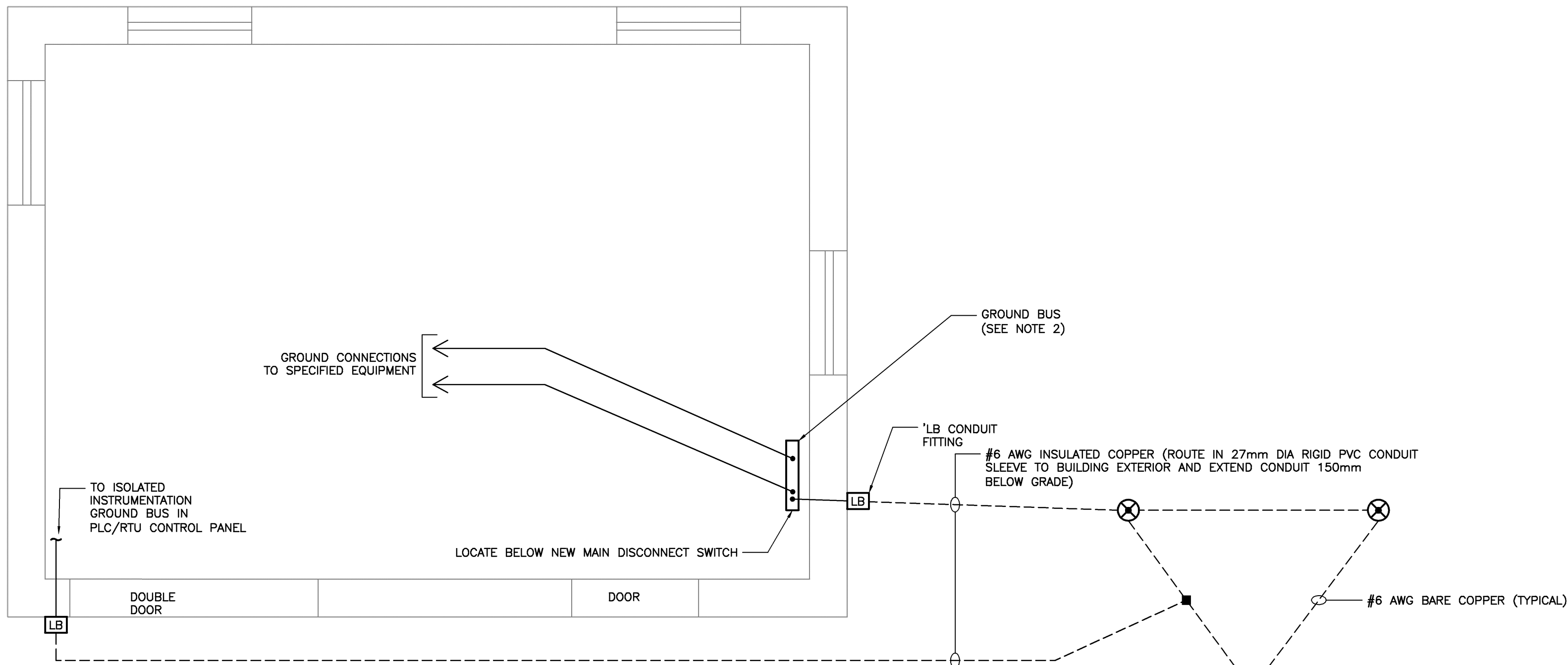
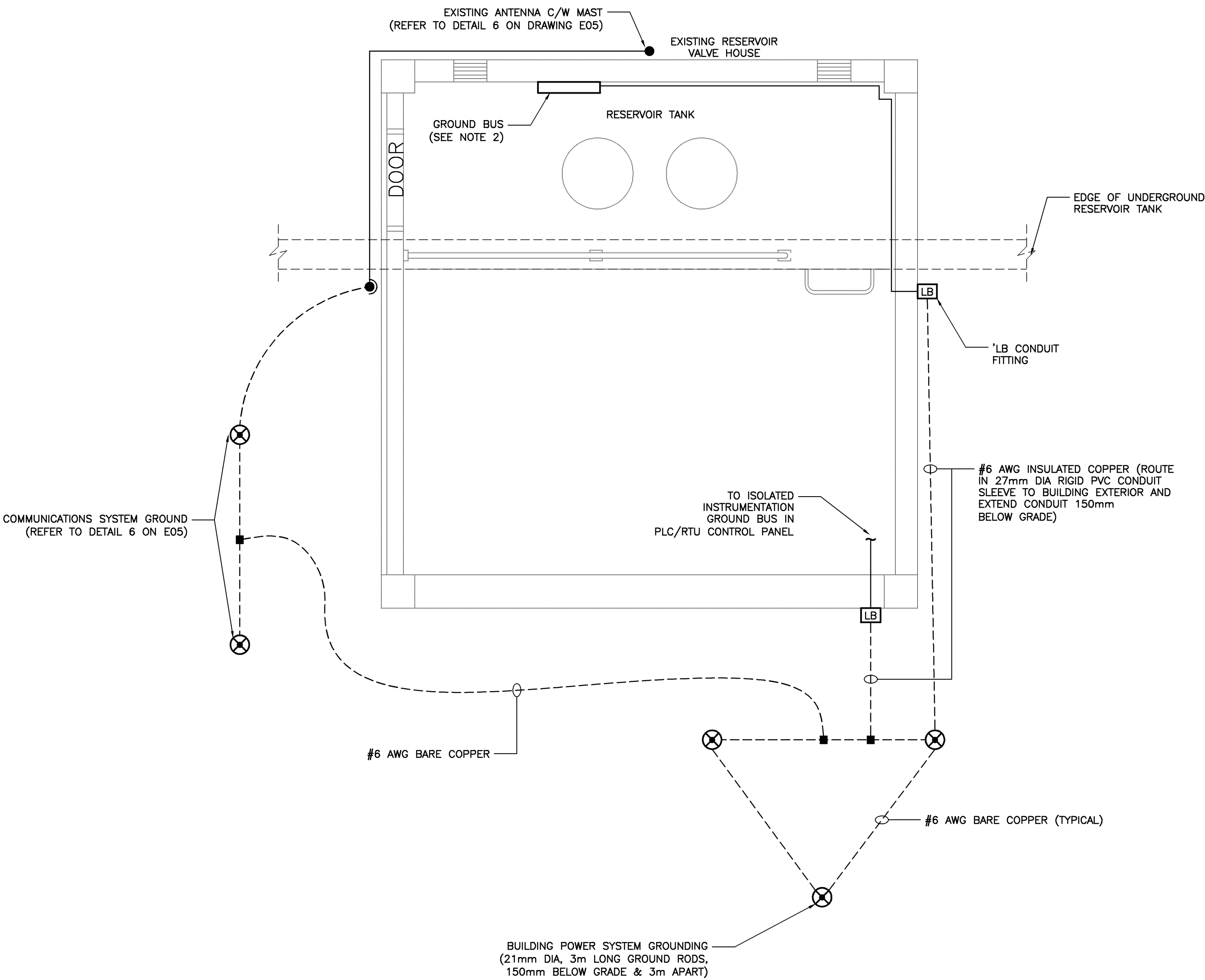


DRAWING NAME: N:\PROJECTS\142493.00 BROAD COVE CAMPGROUND WATER SUPPLY\20 CAD\05 ELEC\142493.00_DRAWING LAYOUT NAME: D05 DATE: 2015-05-15 4:07:50 PM CAD USER: JDS: RWANDREW

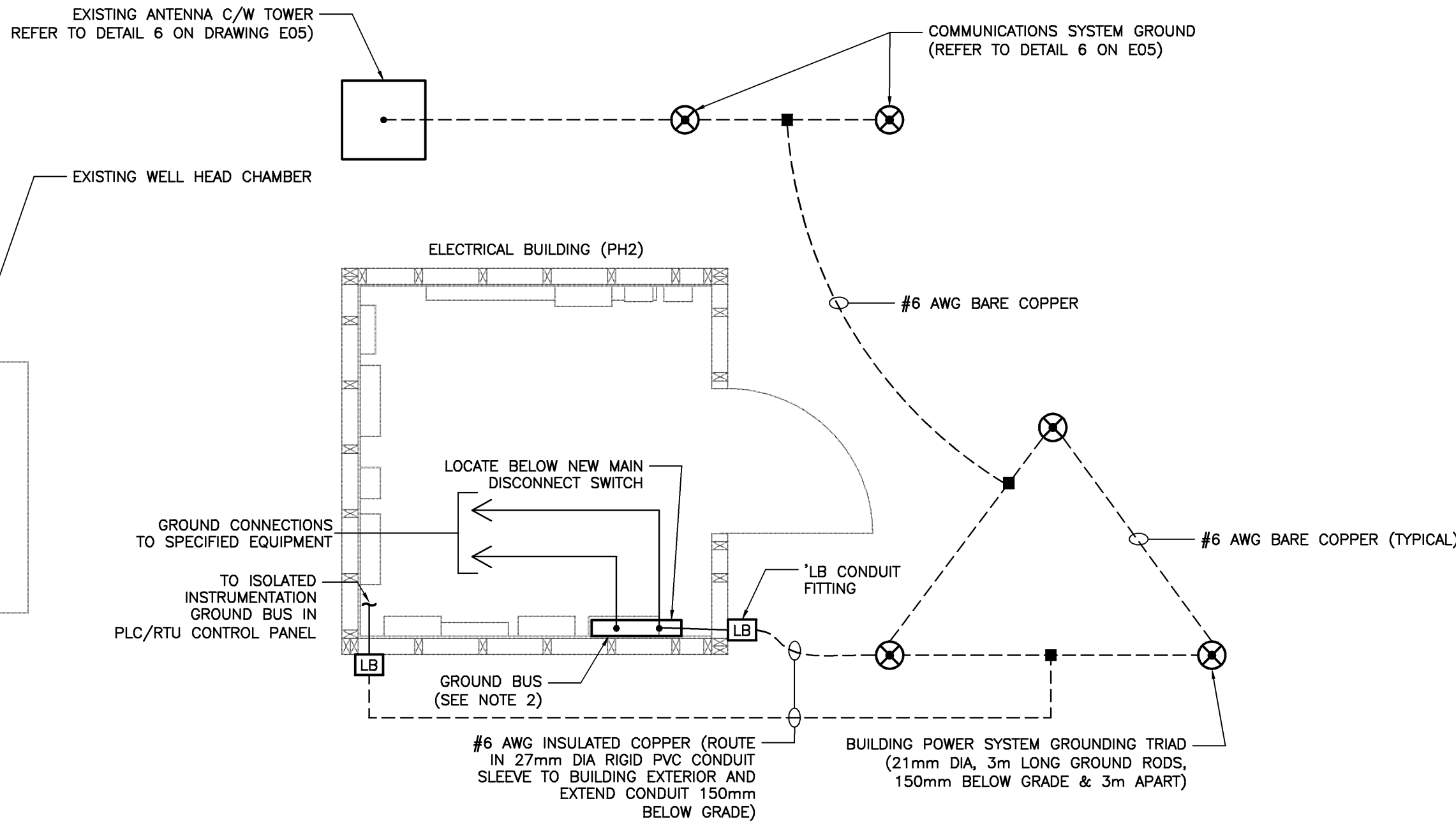
CHLORINATION BUILDING (PH1)



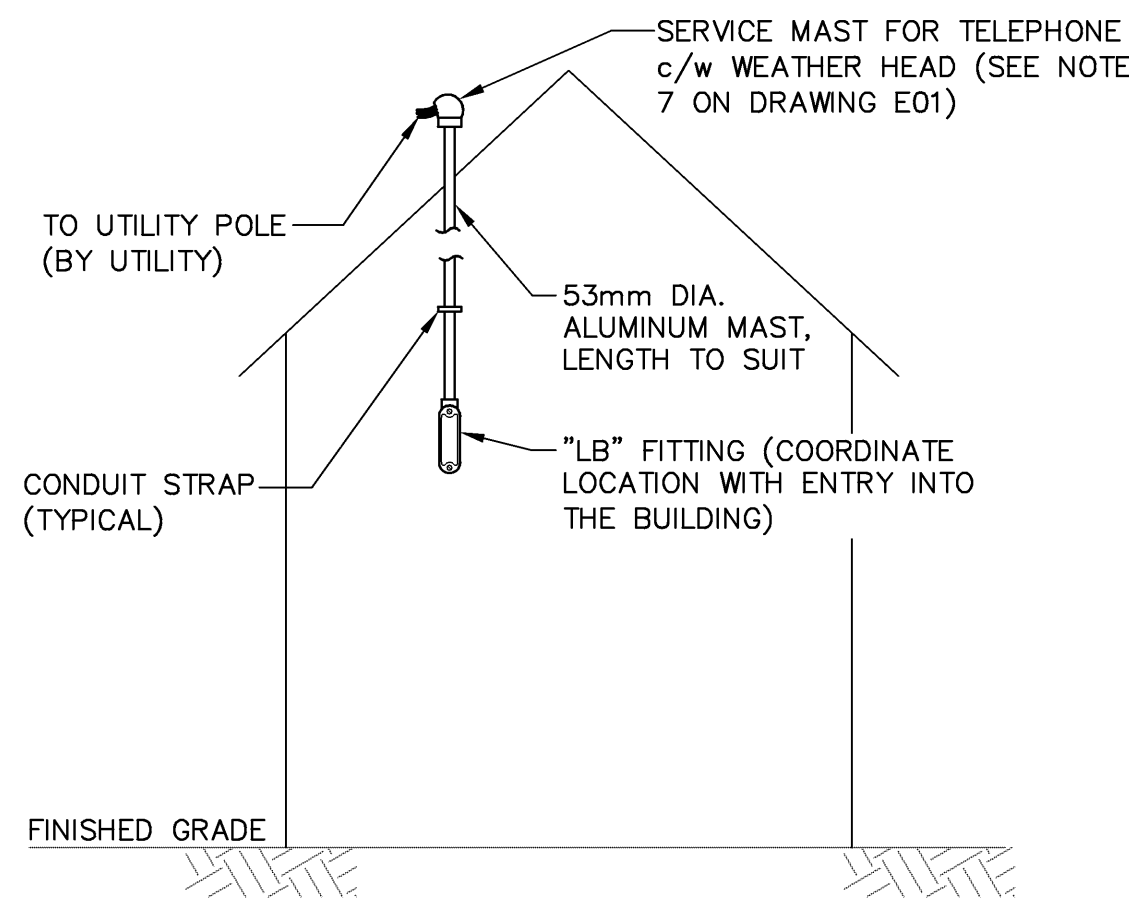
1
—
GROUNDING SYSTEM BLOCK DIAGRAM
DETAIL— AT CHLORINATION BUILDING (PH1)
N.T.S. (SEE NOTES 1, 3 & 4)



3
—
GROUNDING SYSTEM BLOCK
DETAIL— DIAGRAM AT RESERVOIR VALVE HOUSE
N.T.S. (SEE NOTES 1, 3 & 4)



2
—
GROUNDING SYSTEM BLOCK DIAGRAM
DETAIL— AT ELECTRICAL BUILDING (PH2)
N.T.S. (SEE NOTES 1, 3 & 4)



4
—
DETAIL — OVERHEAD TELECOMMUNICATIONS SERVICE ENTRANCE
N.T.S.

NOTES:

1. GROUNDING EQUIPMENT IS NEW UNLESS OTHERWISE NOTED.
2. REFER TO DETAIL 7 ON DRAWING E05 FOR BUS BAR INSTALLATION.
3. REPLACE EXISTING GROUNDING SYSTEM WITH NEW AS SPECIFIED. VERIFY LOCATIONS OF BURIED SERVICES AND TANKS PRIOR TO EXCAVATION AND INSTALLATION OF THE GROUND RODS.
4. MAINTAIN A MINIMUM 2m SEPARATION BETWEEN THE BUILDING POWER SYSTEM GROUNDING TRIAD AND THE COMMUNICATIONS SYSTEM GROUND.

0	ISSUED FOR TENDER	JUNE 5/15	AB
A	ISSUED FOR 80% REVIEW	APRIL 8/15	AB
No.	Description	Date	By
Revision or Issue			
PARKS CANADA BROAD COVE CAMPGROUND WATER SYSTEM UPGRADES			
ELECTRICAL DETAILS SHEET 2 OF 2			
CBCL CBCL LIMITED 1955-2015 Consulting Engineers ISO 9001 CERTIFIED			
CBCL No 142493.00	Contract No —	Date MAR 17/15	Scale N.T.S.
	Designed LH	Drawn RJD	
	Checked IR	Approved JAB	
	Sheet No 6	of 6	
	Drawing No 6663		
E06			