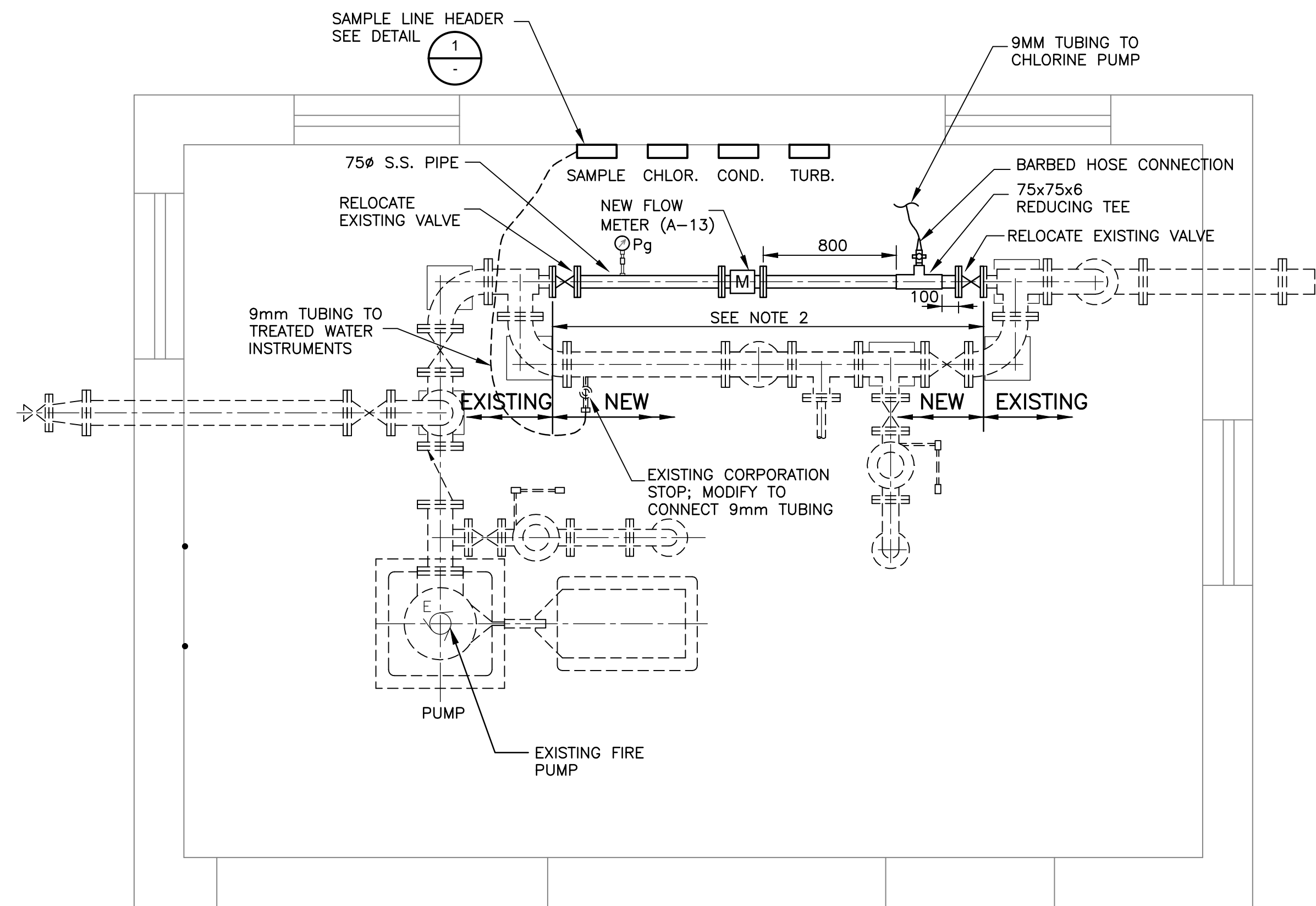
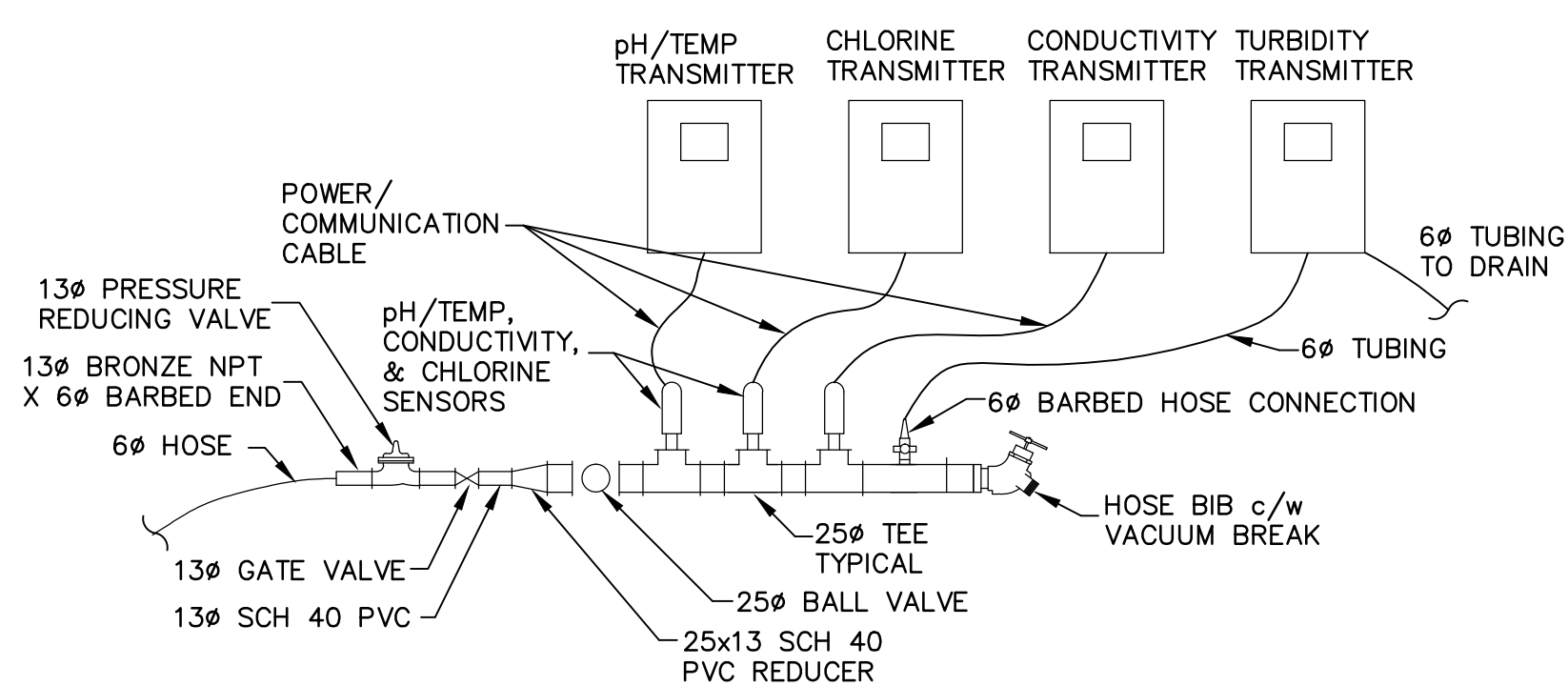


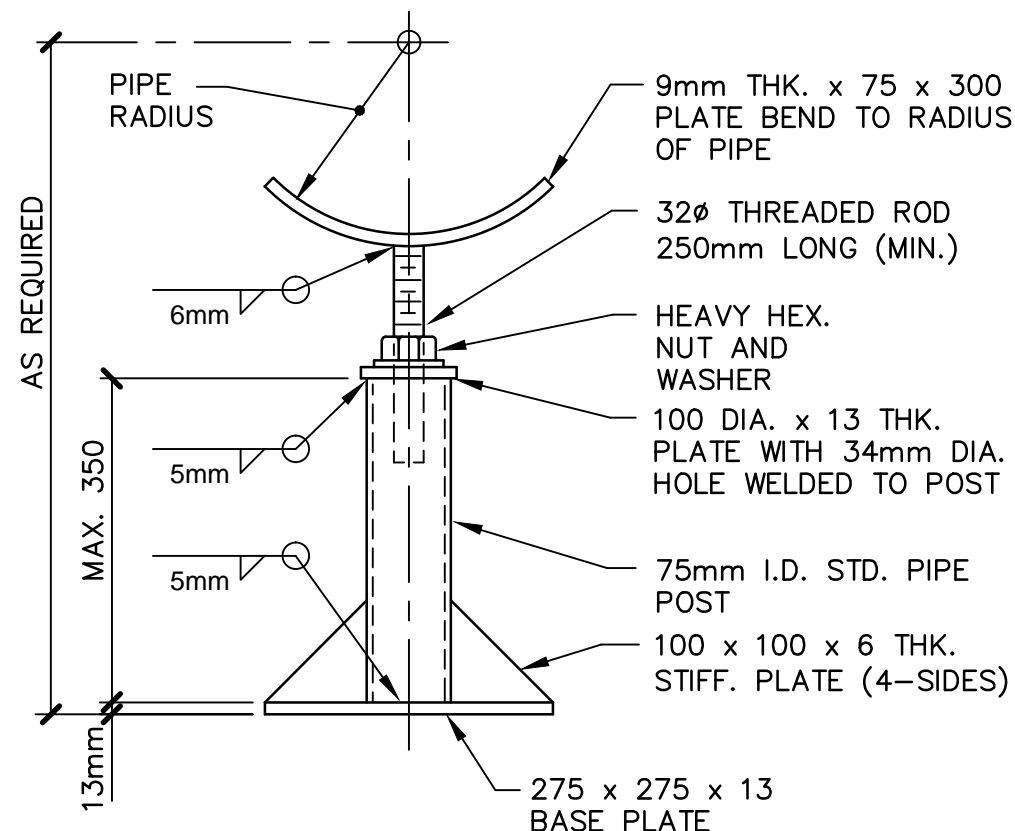
SITE PLAN
1:4000



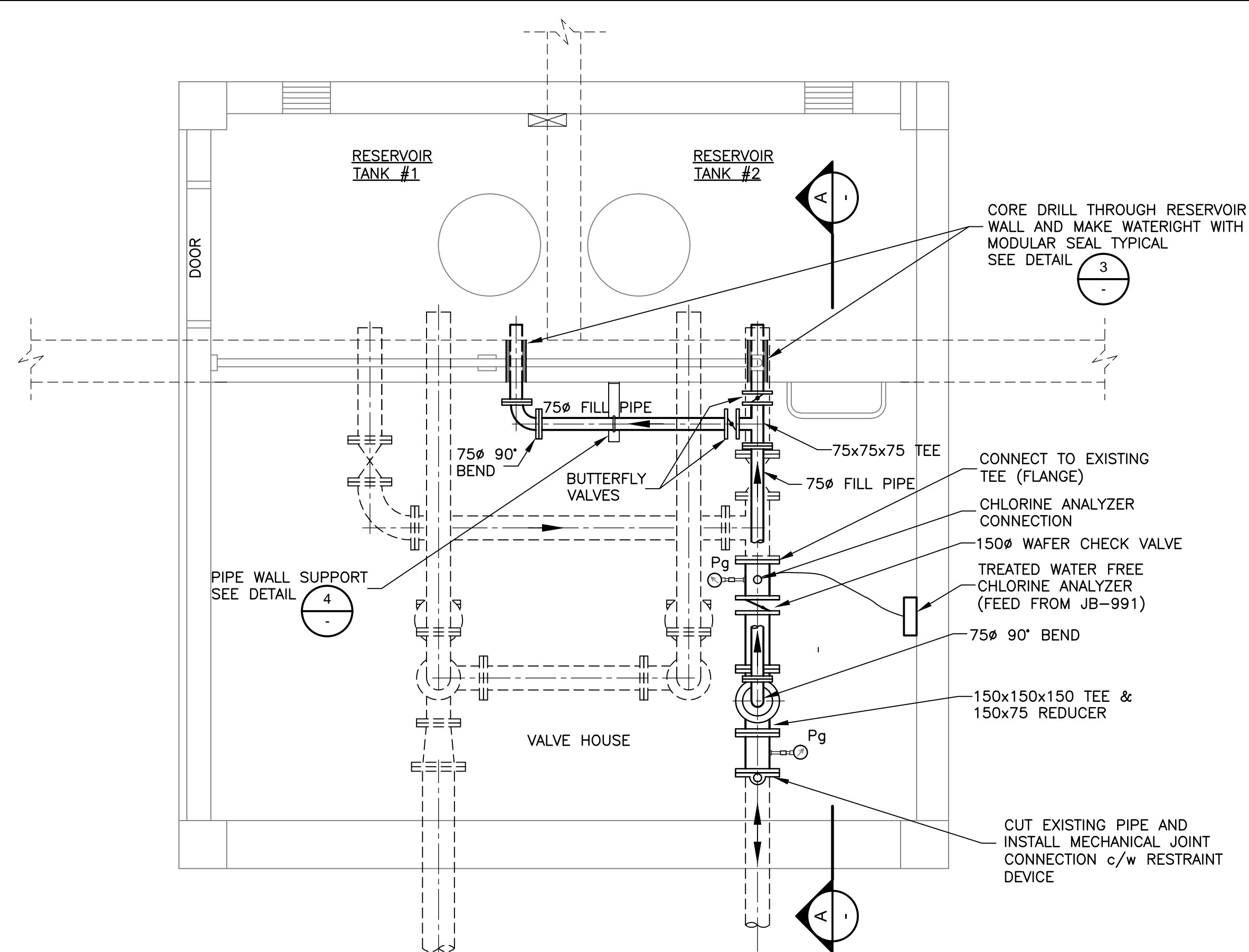
PLAN— PH1 PIPE MODIFICATIONS
1:25



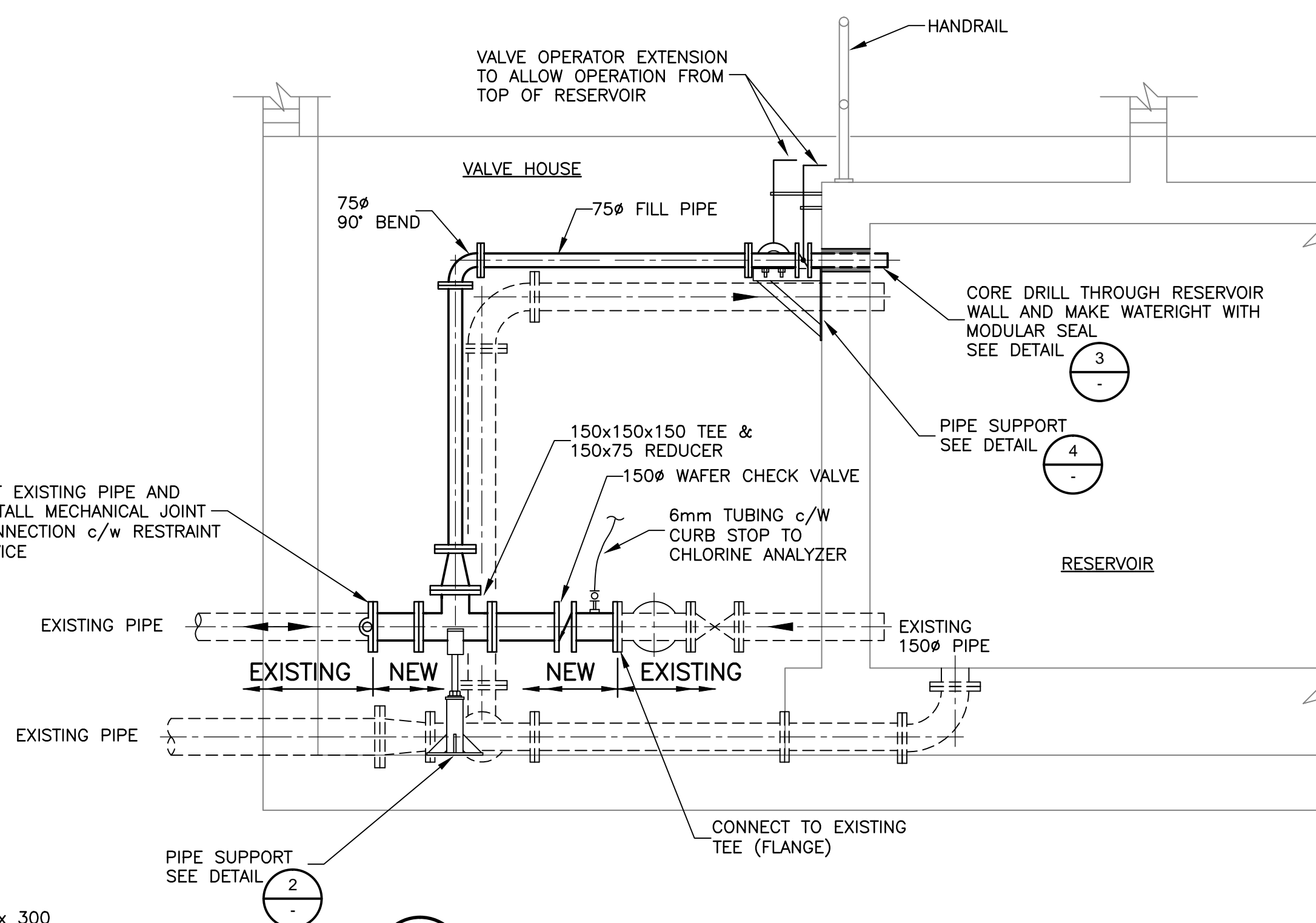
1
DETAIL— SAMPLE HEADER
NTS
NOTE: INLET IS TO HAVE MULTIPLE SENSORS CONNECTED TO ONE TRANSMITTER



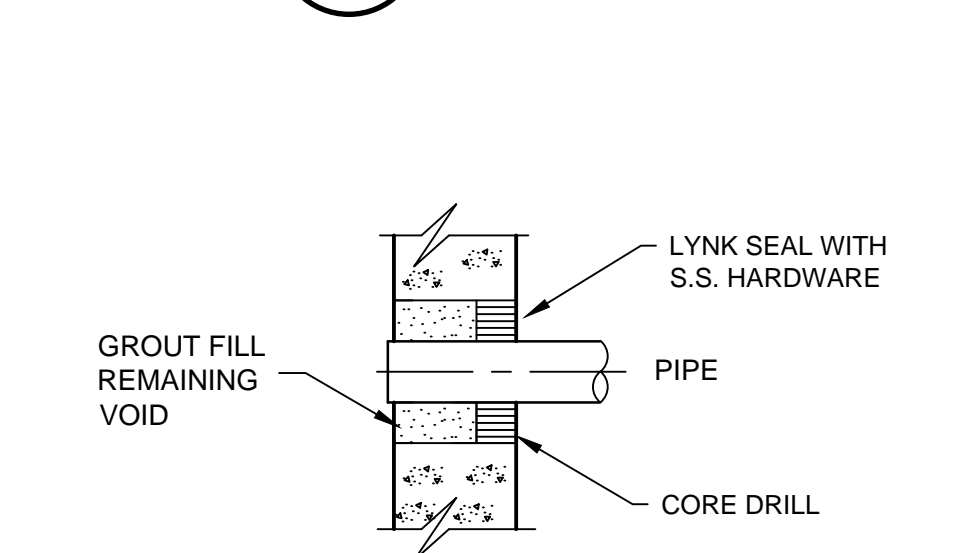
2
DETAIL— PIPE STANCHION SUPPORT
NTS
HOT DIP GALVANIZE AFTER FABRICATION



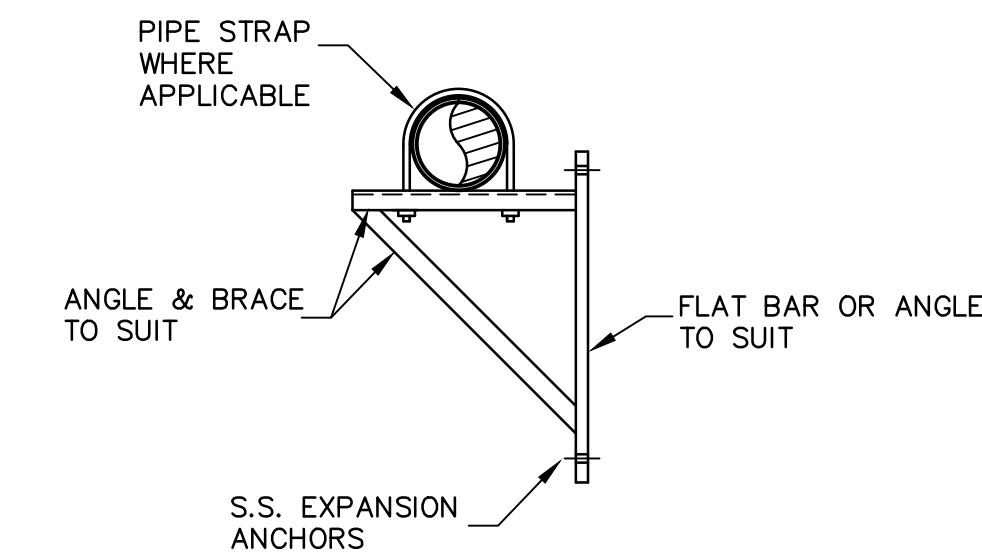
PLAN— RESERVOIR VALVE HOUSE MODIFICATIONS
1:25



A
SECTION— RESERVOIR VALVE HOUSE MODIFICATIONS
1:25



3
DETAIL— PIPE THROUGH WALL
MODULAR SEAL TYPICAL
NTS



4
DETAIL— PIPE WALL SUPPORT
NTS
GALVANIZE PIPE SUPPORT AFTER FABRICATION

NOTES:

1. ALL NEW PIPES TO BE 304 SCH 10 STAINLESS STEEL (S.S.).
2. REMOVE EXISTING PIPE, VALVES, FITTINGS AND INSTRUMENTS AND REPLACE WITH NEW AS SHOWN. DISPOSE OF ALL REMOVED EQUIPMENT.
3. RESERVOIR HAS TWO TANKS AND CAN BE OPERATED WITH ONE TANK OUT OF SERVICE.
4. INSTALL SAMPLE AND CHLORINE TUBING ALONG WALLS AND CEILING ROOF TO RESTRICT WALKWAYS.
5. EXISTING WELL PUMP TO BE REPLACED WITH NEW OWNER SUPPLIED WELL PUMP, SEE E01. ALL WORK TO BE DONE BY LICENSED WELL CONTRACTOR.
6. ALL WORK WITH RESERVOIR TO BE COMPLETED TO AWWA C652.

0	ISSUED FOR TENDER	JUNE 5/15	35
No.	Description	Date	By

Revision or Issue

PARKS CANADA
BROAD COVE CAMPGROUND
WATER SYSTEM UPGRADES

PROCESS
**RESERVOIR VALVE HOUSE
& CHLORINATION BUILDING
PIPING MODIFICATIONS**



CBCL No. 142493.00	Contract No. —	Date MAR 17/15	Scale AS NOTED
-----------------------	-------------------	-------------------	-------------------

Designed JAB	Drawn DC
-----------------	-------------

Checked —	Approved —
--------------	---------------

Sheet No. 1 of 1	Drawing No. P01
---------------------	--------------------

P01