

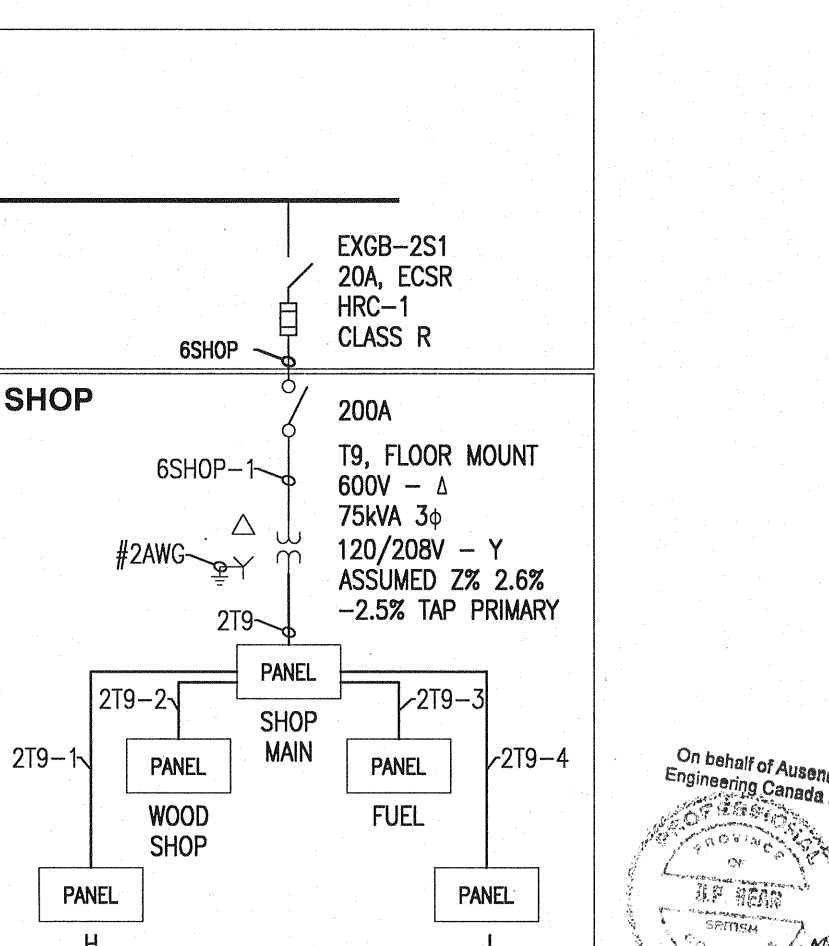
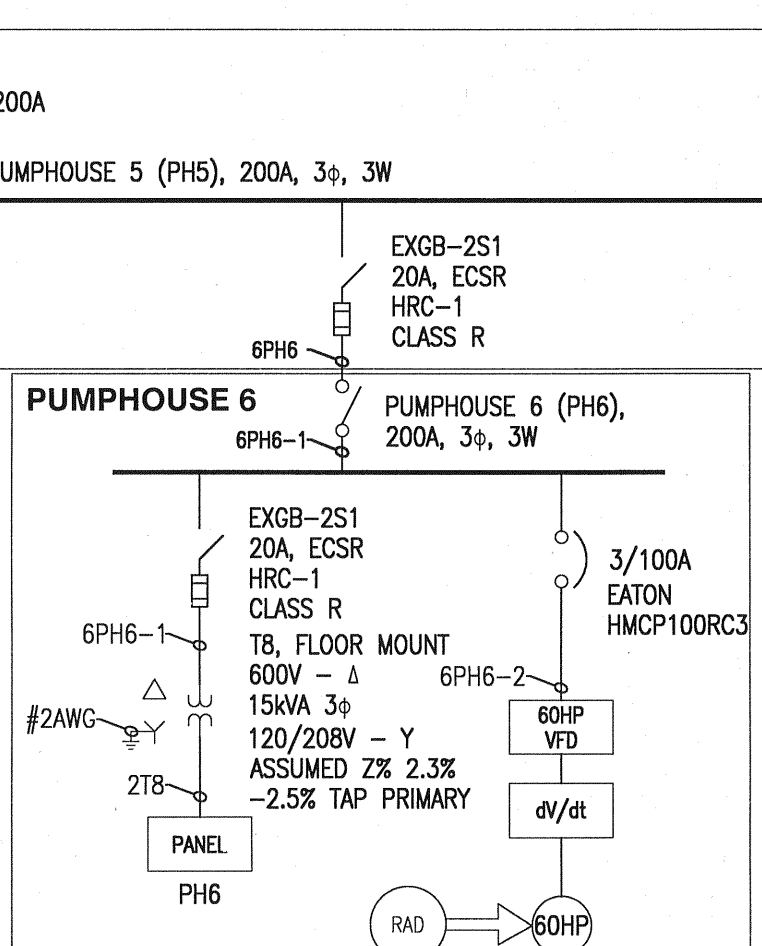
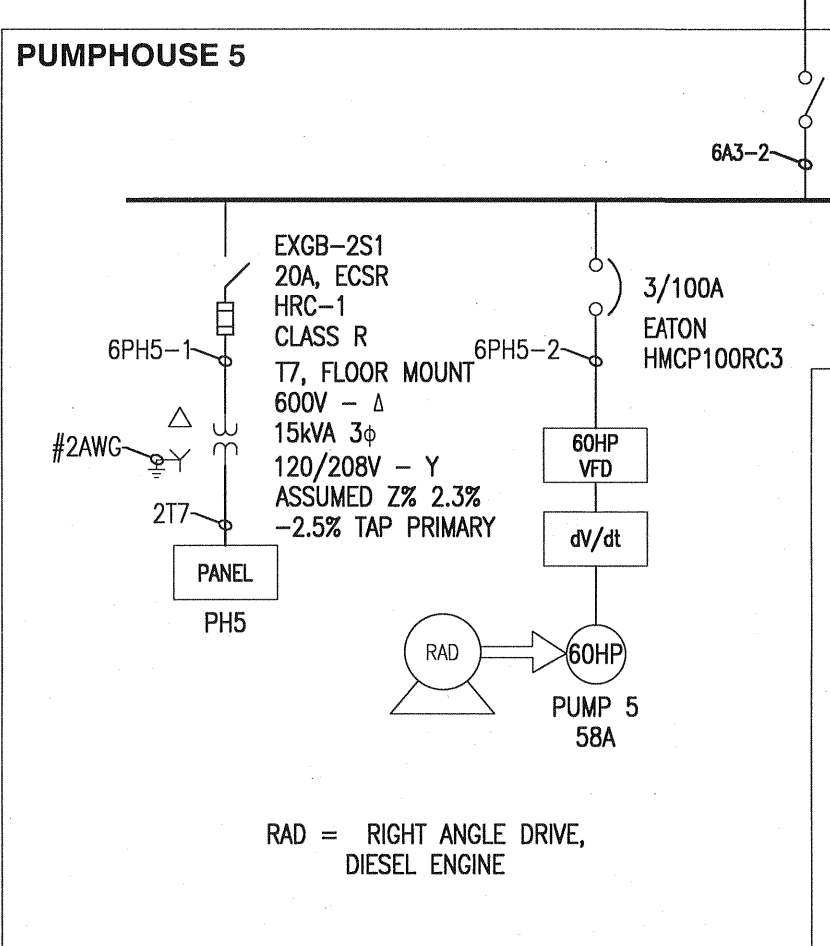
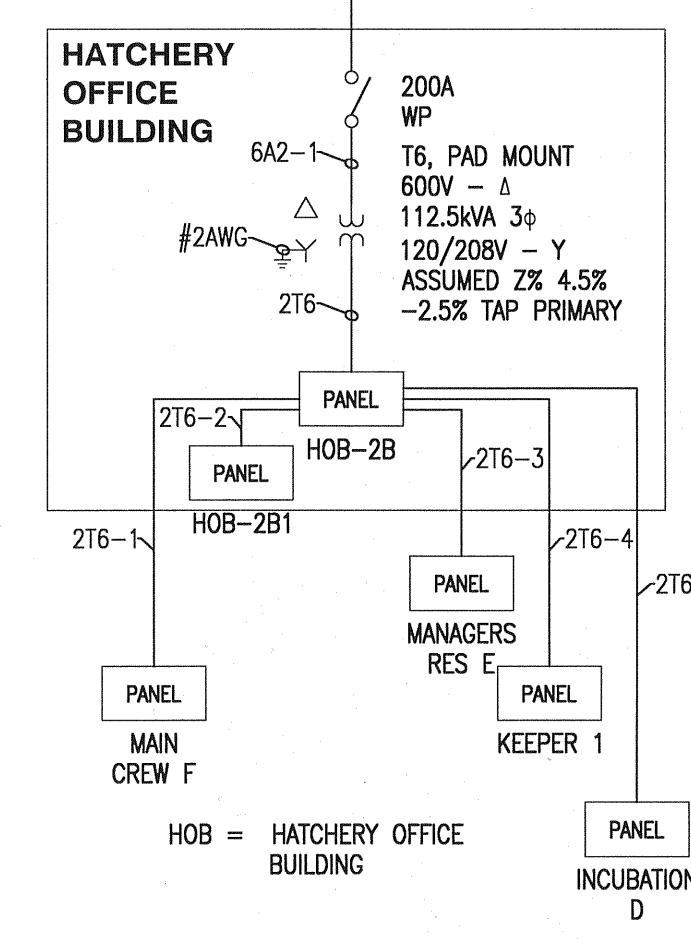
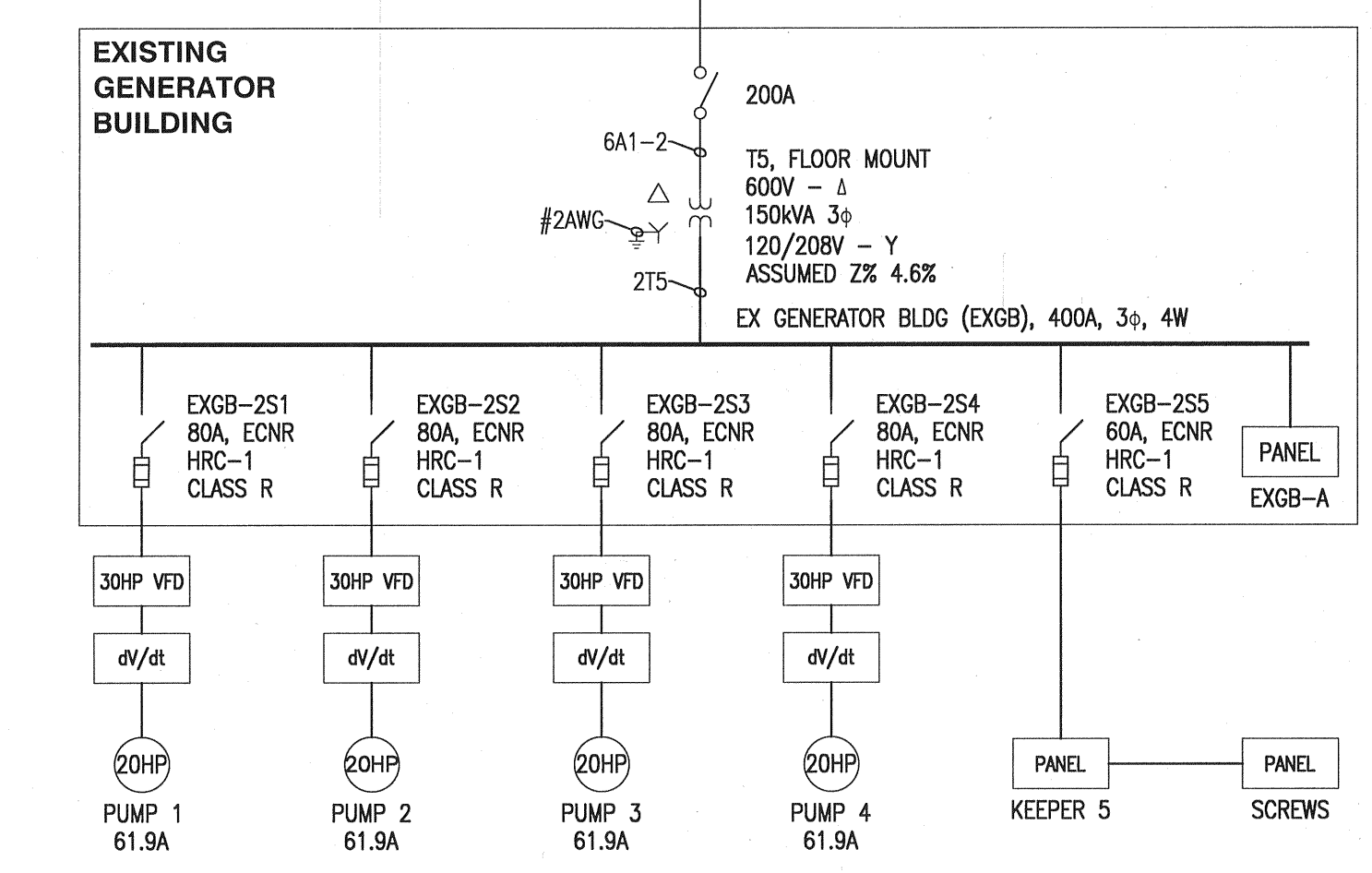
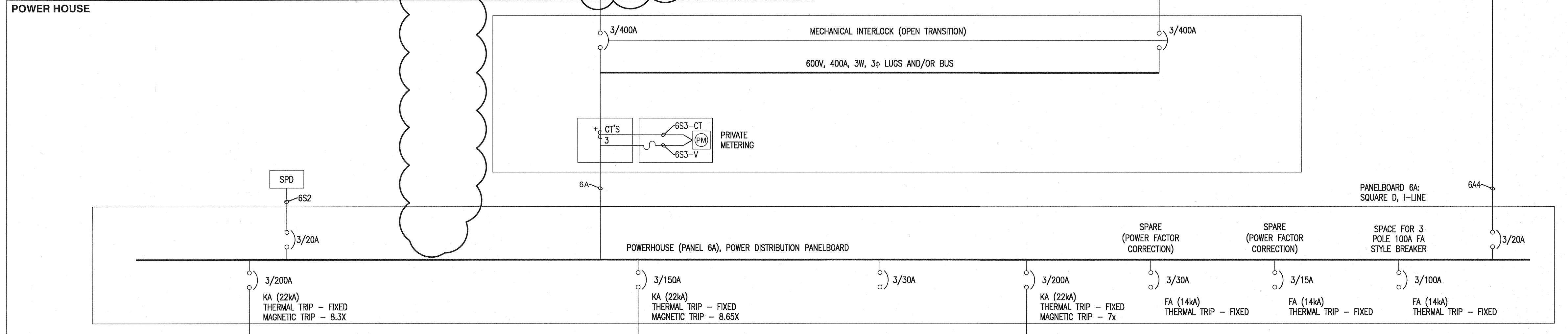
- POWER GENERATION (EXISTING):**
- DIESEL ENGINES: PERKINS 1106D-E66TAG3, TIER 3
 - ALTERNATOR: STAMFORD UCI 274 F.
 - AUTOMATIC VOLTAGE REGULATORS: MX321 (FOR POTENTIAL HIGH PHASE IMBALANCE)
 - GENERATOR CONTROLLERS: INTELEGEN(MT)
 - BATTERY CHARGERS: THOMSON TECHNOLOGY BCM 1220 (WITH DC VOLT/METER), 12Vdc.
 - BREAKER/ CONTACTOR COMBINATIONS MAY BE REPLACED BY MOTORIZED BREAKERS.
 - ENGINE PROTECTION BREAKERS TO INCLUDE LOW MAGNETIC PICKUP TRIP.
 - ALL POINTS OF POTENTIAL DISCONNECTION STATUS MONITORED BY THE POWER SYSTEM CONTROLLER.
 - SYNCHRONIZING CONTROL SYSTEM INCLUDES MODBUS RTU TO TCP ETHERNET CONVERTER; NPORT 6110, MOXA, WITH CAT 6 PATCH CORD FROM THE CONVERTER TO THE SCADA INTERFACE ENCLOSURE.

- NOTES**
- NO-LOAD DISC. SW 25S1 & 25CB-1 ARE IMMERSED IN 500 KVA T2 TANK.
 - INSTALL BCH METER BOX ON 2000x100x100 HSS HD GALV POST EMBEDDED IN CONCRETE FOOTING OUTSIDE BUT NEXT TO SOUTH FENCE
 - EXISTING 138 KV 300 KVA TRANSFORMER (NOT SHOWN) SHALL BE REMOVED FOR FUTURE USE BY OWNER.
 - TWO EXISTING 600V TECK CABLES FROM T1 TO SPLICE PIT SHALL BE REMOVED.
 - CABLES 25T1-1: 3x1c#1 Cu 28KV EPR 133% SHLD. PLUS #6 Cu GND
 - CABLES 6T2-1,-2: 3x1c#500kcmil RWU-90 1W XLPE PLUS #2 Cu GND

- TRANSFER SWITCH (EXISTING):**
- THOMPSON TECHNOLOGY TS 883A040A1B2AKKAA WITH ACCESSORIES AND ADDITIONS IN NEMA 1 CABINET OF:
 - GPA (GENERATOR POWER AVAILABLE CONTACT),
 - TS-HI (ENCLOSURE STRIP HEATER c/w THERMOSTAT),
 - UAL (UTILITY AVAILABLE LIGHT),
 - UPA (UTILITY POWER AVAILABLE CONTACT) ,
 - PRIVATE POWER MONITOR(ACCLUM IIR WITH AXM-NET AND AXM-101) CAT 6 ETHERNET CABLE AND EMT CONDUIT FROM THE TRANSFER SWITCH TO THE SCADA INTERFACE ENCLOSURE, AND
 - SURGE PROTECTION DEVICE (SPD) WITH BREAKER OVER-CURRENT DEVICE.

TRANSFER SWITCH DESCRIPTION: 3 POLE, 400A, STANDARD APPLICATION, OPEN TRANSITION, CSA C22.2 No.178 SAFETY STANDARD, 600V 3PH 3W (GENERATOR NEUTRALS GROUNDED AT GENERATOR CONTROLS CABINET), TSC 800 CONTROLLER, MOLDED CASE SWITCH UTILITY AND GENERATOR SIDE.

- SPLICE PIT AND CONNECTIONS (RELOCATE):**
- PIT BOX EQUIVALENT TO: AE CONCRETE 5686 SERVICE BOX WITH GALVANIZED STEEL LID; TOP, BOTTOM AND BASE. WELDING MARKING "TELEC".
 - CONNECTIONS: HIGH PRESS COPPER C-TAP CONNECTORS WITH WATERPROOF INTERLOCKING INSULATING COVERS, WITH ADDITIONAL OUTER LAYERS OF 3M SCOTCH TAPE 130C AND 3M SCOTCH SUPER 33+.



PRELIMINARY

ISSUED FOR TENDER ONLY

ENGINEERING CONSULTANT

Ausenco

PROJECT / DRAWING NO: 101101-02-0000-5-101

On behalf of Ausenco Engineering Canada Inc.

DRAWING IMPORTED FROM DWG 32-18-276 Rev. 3 AND REVISED BY AUSENCO (PROJECT 101101-02) FOR ELECTRICAL PROJECT UPGRADE WITH FOC PERMISSION. AUSENCO IS RESPONSIBLE ONLY FOR ITS REVISIONS: 0

DPB MAY 22 2015

FISHERIES AND OCEANS CANADA

REAL PROPERTY AND TECHNICAL SUPPORT

DESIGNED MHM	SCALE NONE
DRAWN JM	DATE APRIL 2015
CHECKED DFB	DRAWING NUMBER 32-18-288
RECOMMENDED	REVISION 0
APPROVED JL	
APPROVED	

32-18-276	NEW POWERHOUSE & DISTRIBUTION UPGRADES
DWG. NO.	DRAWING REFERENCES
	NOTES
	REVISIONS
0	MAY 25/2015 ISSUED FOR TENDER
NO.	DATE
	REVISIONS