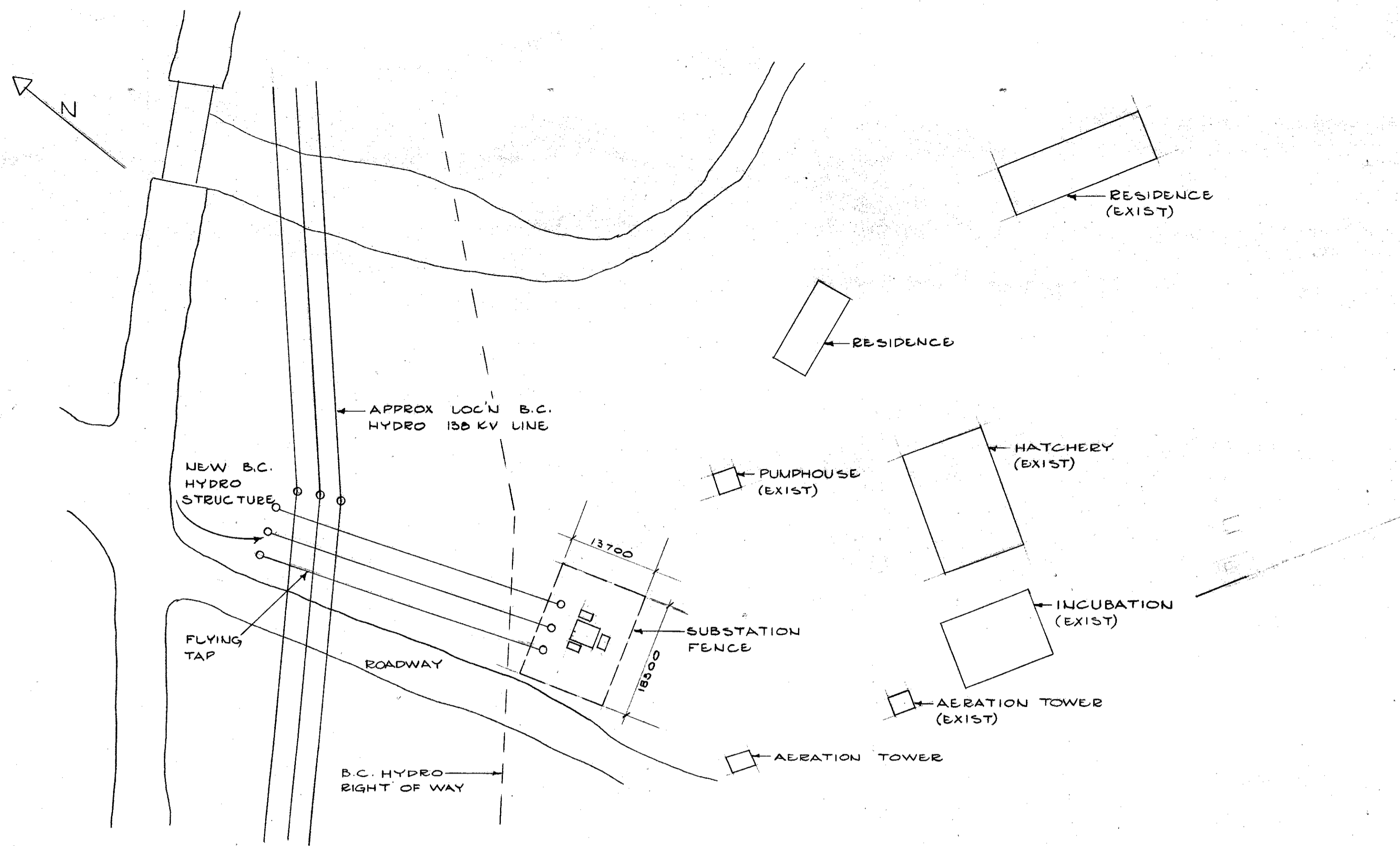


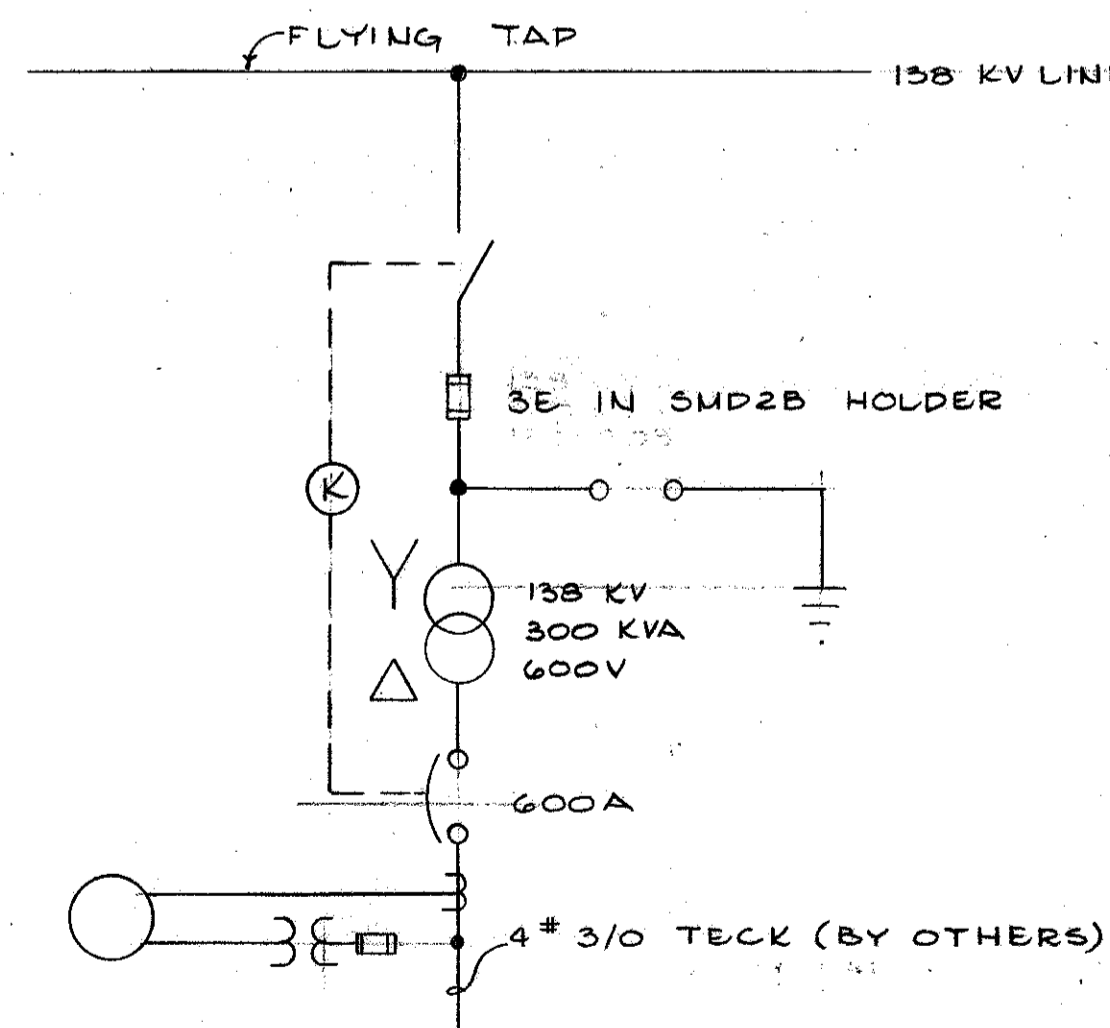
BILL OF MATERIAL

ITEM	QTY	DESCRIPTION
1	LOT	SUB-ASSEMBLED ALUMINUM LATTICE COLUMNS AND GIRDER.
2	2	GALVANIZED WELDED STEEL ANGLE BASES C/W GUSSETS.
3	8	ANCHOR BOLT C/W NUT
4	LOT	MOUNTING BOLTS FOR EQUIPMENT AND STRUCTURE
5	3	1/2" DIA. "U" BOLT C/W NUTS AND LOCKWASHERS
6	3	SETS OF STRAIN EXTENSION 30" LONG
8	3	TOWER EYES
9	1	138KV 600AMP, 3POLE CENTER BREAK GROUP OPERATED SWITCH, C/W MULTI-REV. GROUND DEVICE AND INTERLOCK ADAPTOR, AND INSULATORS.
10	3	SWITCH TERMINALS FOR 4 HOLE NEMA TO 266 MCM ACSE.
11	3	SWITCH TERMINALS FOR 4 HOLE NEMA TO 250 MCM STR. CU.
12	1	INTERLOCK C/W DUST COVER
13	3	120 KV INTERMEDIATE CLASS LIGHTNING ARRESTORS COB #GP-120
14	3	138 KV FUSE MOUNTS AND HOLDERS. S4C SMD 2B
15	3	138 KV 3 AMP E SPEED FUSE REFILLS
16	3	FUSE TERMINAL FOR 2 HOLE NEMA TO 250 MCM STR. CU.
17	1	FUSE CAUTION SIGN
18	AS REQ'D	250 MCM STR. COPPER
19	"	2/0 STRANDED COPPER
20	"	"J" GROUND CLAMP FOR 2/0 STRANDED COPPER (EVERY 4 FT. APPROX.)
21	"	SINGLE GROOVE GROUND CONNECTOR FOR 2/0 STR. COPPER
22	"	SOLDERLESS GROUND CONNECTOR FOR 2/0 STR. CU
23	18	GREY BALL SOCKET SUSPENSION INSULATOR
24	3	STRAIN CLAMPS
25	3	INCOMING LINES - 266 MCM ACSE - BY B.C. HYDRO
26	1	TRANSFORMER, 3 PHASE, 138KV/600V
27	3	RIGID TYPE TRANSFORMER STUD CONNECTORS FOR 1 1/2"-12 TO UNIVERSAL
28	3	"U" BOLT FOR 1 1/2" IPS LIGHTNING MAST GROUND
29	2	1 1/2" DIA. x 15'-0" LONG STRUCTURAL IPS USED AS LIGHTNING MAST
30	2	DOUBLE GROOVE GROUND CONNECTOR FOR 2/0 CU.
31	AS REQ'D	GROUND ROD
32	"	THERMIT WELD
33	"	GROUND CONDUCTOR
34	"	FENCE
35	"	GRADIENT CONTROL MAT
36	"	SECONDARY BREAKER & METERING CABINET



SITE LAYOUT

SCALE 1:500



SINGLE LINE DIAGRAM

EMCO ENGINEERING LTD.

DESIGNED R.R.		CONUMA RIVER HATCHERY CONTRACT NO. 3 138 K.V. SUBSTATION SITE LAYOUT, SINGLE LINE DIAGRAM, BILL OF MATERIALS	SCALE AS SHOWN
DRAWN E.R.			DATE OCT. 1979
CHECKED R.R.			DRAWING NUMBER 32-18-90
RECOMMENDED			REVISION
APPROVED			
APPROVED			

DWG. NO.	REFERENCE DRAWINGS	NOTES	NO.	DATE	REVISIONS

BCL 92841 - D.S.C.