

**RETURN BIDS TO:**  
**RETOURNER LES SOUMISSIONS À:**  
Bid Receiving Public Works and Government  
Services Canada/Réception des soumissions  
Travaux publics et Services gouvernementaux  
Canada  
800 Burrard Street, Room 219  
800, rue Burrard, pièce 219  
Vancouver  
British Columbia  
V6Z 0B9  
Bid Fax: (604) 775-9381

**SOLICITATION AMENDMENT**  
**MODIFICATION DE L'INVITATION**

The referenced document is hereby revised; unless otherwise  
indicated, all other terms and conditions of the Solicitation  
remain the same.

Ce document est par la présente révisé; sauf indication contraire,  
les modalités de l'invitation demeurent les mêmes.

**Comments - Commentaires**

**Vendor/Firm Name and Address**  
**Raison sociale et adresse du**  
**fournisseur/de l'entrepreneur**

**Issuing Office - Bureau de distribution**  
Public Works and Government Services Canada -  
Pacific Region  
800 Burrard Street, Room 219  
800, rue Burrard, pièce 219  
Vancouver  
British C  
V6Z 0B9

<b>Title - Sujet</b> Radar Hill Viewpoint Shelter	
<b>Solicitation No. - N° de l'invitation</b> EZ899-160310/A	<b>Amendment No. - N° modif.</b> 001
<b>Client Reference No. - N° de référence du client</b>	<b>Date</b> 2015-06-30
<b>GETS Reference No. - N° de référence de SEAG</b> PW-\$PWY-022-7533	
<b>File No. - N° de dossier</b> PWY-5-38035 (022)	<b>CCC No./N° CCC - FMS No./N° VME</b>
<b>Solicitation Closes - L'invitation prend fin</b> <b>at - à 02:00 PM</b> <b>on - le 2015-07-13</b>	<b>Time Zone</b> <b>Fuseau horaire</b> Pacific Daylight Saving Time PDT
<b>F.O.B. - F.A.B.</b> <b>Plant-Usine:</b> <input type="checkbox"/> <b>Destination:</b> <input checked="" type="checkbox"/> <b>Other-Autre:</b> <input type="checkbox"/>	
<b>Address Enquiries to: - Adresser toutes questions à:</b> Arthur (PWY), Carolyn	<b>Buyer Id - Id de l'acheteur</b> pwy022
<b>Telephone No. - N° de téléphone</b> (604) 775-6667 ( )	<b>FAX No. - N° de FAX</b> (604) 775-6633
<b>Destination - of Goods, Services, and Construction:</b> <b>Destination - des biens, services et construction:</b> Parks Canada - Pacific Rim National Park - Tofino, BC	

**Instructions: See Herein**

**Instructions: Voir aux présentes**

<b>Delivery Required - Livraison exigée</b>	<b>Delivery Offered - Livraison proposée</b>
<b>Vendor/Firm Name and Address</b> <b>Raison sociale et adresse du fournisseur/de l'entrepreneur</b>	
<b>Telephone No. - N° de téléphone</b> <b>Facsimile No. - N° de télécopieur</b>	
<b>Name and title of person authorized to sign on behalf of Vendor/Firm</b> <b>(type or print)</b> <b>Nom et titre de la personne autorisée à signer au nom du fournisseur/</b> <b>de l'entrepreneur (taper ou écrire en caractères d'imprimerie)</b>	
<b>Signature</b>	<b>Date</b>

Solicitation No. - N° de l'invitation

EZ899-160310/A

Client Ref. No. - N° de réf. du client

Amd. No. - N° de la modif.

001

File No. - N° du dossier

PWY-5-38035

Buyer ID - Id de l'acheteur

pw022

CCC No./N° CCC - FMS No/ N° VME

---

### **Amendment 001**

Amendment 001 has been raised to incorporate Addendum No. 1 and sketches AD-01, AD-02, AD-03, AD-04, AD-05.

See the attached Addendum No. 1 and 5 sketches.

**ALL OTHER TERMS AND CONDITIONS REMAIN UNCHANGED**

Radar Hill, BC  
Radar Hill Viewing Shelter  
2015-06-30

**ADDENDUM #1**

Page 1 of 3

---

The following changes in the tender documents are effective immediately. This addendum will form part of the contract documents.

**ADDENDUM No. 1**

This Addendum contains 2 pages, 2- 8 ½" x 11 ½" and 3-11"x17" sketches

**Amend/revise the Standard Contract Documents as follows:**

**CHANGES AND CLARIFICATIONS**

**DRAWINGS**

**1.0 DWG S101**

- 1.1 **Field Review: Revise** ".2 All non conforming works ...in accordance with the contract. " to ".3 All non conforming works ...in accordance with the contract."
- 1.2 **Field Review: Add** .2 as ,"Field Review pertaining to approval of bearing surface and testing of engineered fill that supports foundation elements shall be carried out by Independent Testing Agency approved by Departmental Representative.

**2.0 DWG S201**

- 2.1 **Add** ramp slope up from East to West to Existing & New Top South Platform.
- 2.2 **Revise** plan & section 1/201 as per sketch AD01.
- 2.3 **Revise** frost protection to base of footing to 600min. as per section 4/201.

**3.0 DWG S202**

- 3.1 **Revise** width of cut out stringers from 191mm to 184mm of "New Middle Wood Stair".
- 3.2 **Revise** sections 1/202 & 2/202 as per sketches AD02 & AD03 respectively.

**4.0 DWG S203**

- 4.1 **Add** ramp slope up from South to North to Existing & New Lower North West Platform.
  - 4.2 **Revise** plan & section 1/203 as per sketch AD04.
  - 4.3 **Revise** frost protection to base of footing to 600min. as per section 4/203.
  - 4.4 **Clarify** section 6/203 by adding "x" marks to 152x152 beam in 3 locations to indicate perpendicular planes.
-

**5.0 DWG S301**

- 5.1 **Revise** shelter sections and details as per sketch AD05.

**6.0 DWG S302**

- 6.1 **Revise** dimensions of 575 to 500 and 125 to 150 on section 1/302.
- 6.2 **Add** Uplift hanger to upper joist/beam connection and **provide** 50mm vertical coverage of metal flashing over fascia board all around on section 2/302.
- 6.3 **Add** Note: Refer to specification section 05 55 00 clause 3.3 Field Quality Control for steel brackets test requirements.

**SPECIFICATIONS**

7.0 01 11 55 GENERAL INSTRUCTIONS

- 7.1 **Add** Section 01 11 55 clause 24.2.4 as, "Testing of fill that supports structural elements must be completed by the Departmental Representative or Independent Testing Agency approved by Departmental Representative.

8.0 05 55 00 METAL FABRICATION

- 8.1 **Reformat** 3.3 to 3.4.

8.2 **Add** 3.3 FIELD QUALITY CONTROL

- .1 The Departmental Representative will not be responsible for inspection of the Contractor's work as described in Clause 7.12 of the CISC Code of Standard Practice for Structural Steel. The Contractor is responsible for the accuracy and completeness of his own work and shall verify that the structural steel has been fabricated, erected and finished in accordance with the contract specifications.
- .2 Inspection and testing of materials and workmanship will be carried out by testing laboratory designated by Departmental Representative.

**SCHEDULES OF INSPECTION AND TESTING OF MATERIALS**

- .1 Non destructive Testing of puddle welds:  
i) 100% of all welds to be visually inspected (Field).

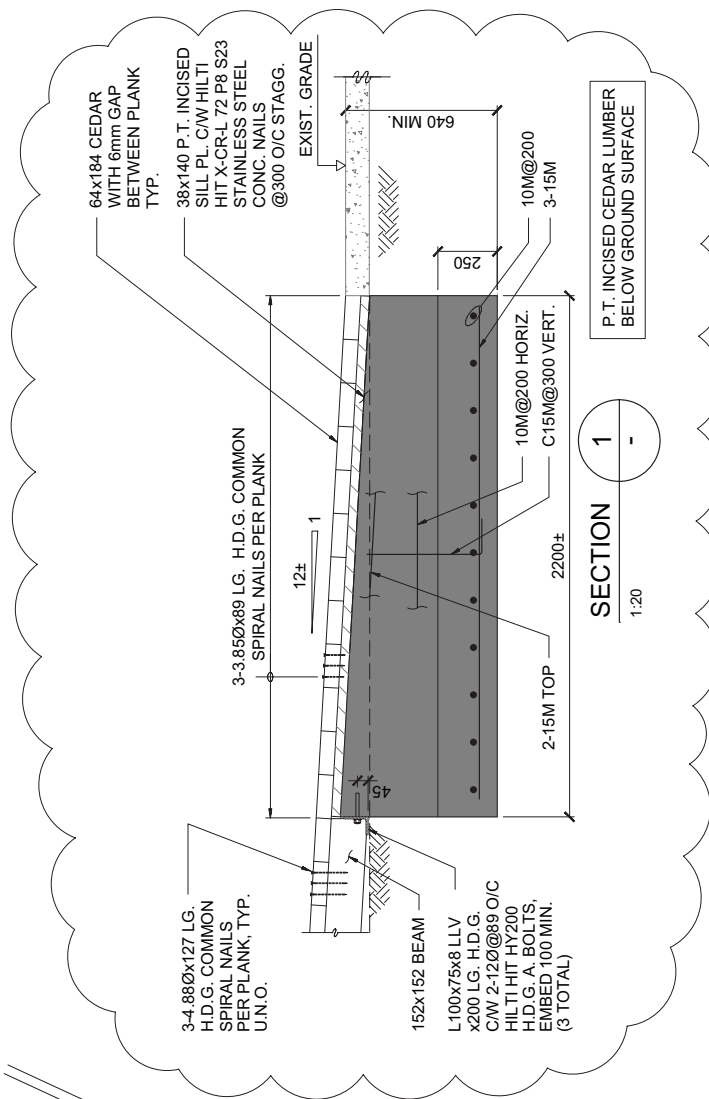
- .ii) Verify the certification and conformance of the erector and welder to any relevant CSA Standards.
  - .3 Provide safe access and working areas for testing on site, as required by testing agency and as authorized by Departmental Representative.
  - .4 Submit test reports to Departmental Representative within 1 week of completion of inspection.
  - .5 The costs of tests shall be borne by the Contractor.
- 9.0 31 23 10 EXCAVATING TRENCING & BACKFILLING
- 9.1 **Delete** Section 32 23 10 Part 2 Products clause 2.1.1.4
  - 9.2 **Reformat** Section 32 23 10 Part 3 Execution clause 3.8.8; **Reformat** 3.8.1(Blank) to 3.8.16, "Where material at bottom of excavation is disturbed, compact foundation soil to density at least equal to undisturbed soil."
  - 9.3 **Add** Section 32 23 10 Part 3 Execution clause 3.11.6 as, "In place density testing to be completed by Independent Testing Agency approved by Departmental Representative for this project where backfill material supports structural elements.
  - 9.4 **ADD** Section 32 23 10 Part 3 Execution clause 3.11.7, "Costs of tests shall be borne by Contractor."

**RESPONSE TO CONTRACTOR QUERIES**

- 10.0 Not applicable.

**END OF ADDENDUM No .1**

---



A0 - PWCSC - ANSI B-L2 - 11X17

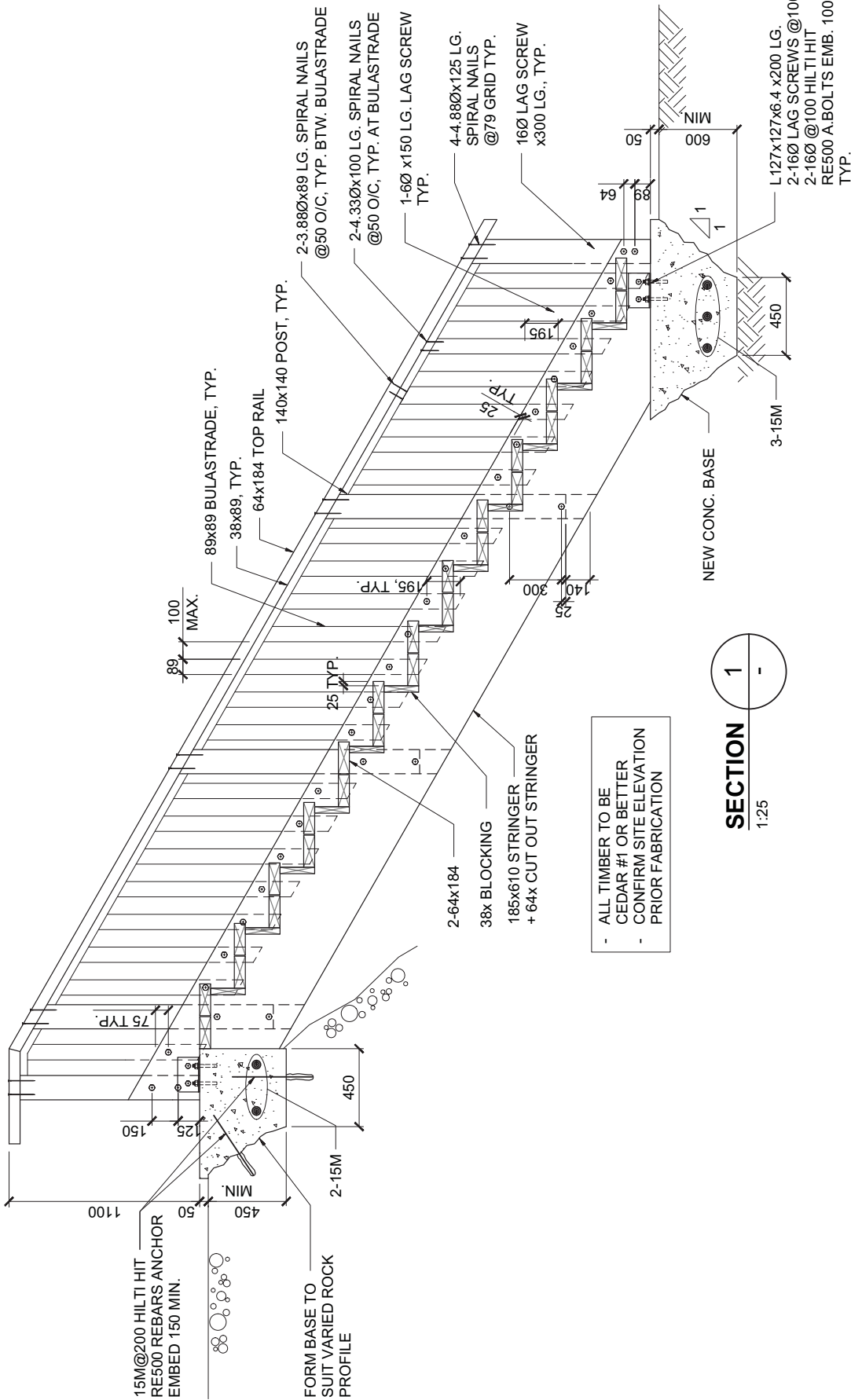


Public Works and  
Government Services  
Canada

Travaux publics et  
Services gouvernementaux  
Canada

REAL PROPERTY SERVICES  
Pacifique Region

SERVICES IMMOBILIERS  
Région de Pacifique



Project title/Titre du projet

RADAR HILL  
VIEWPOINT SHELTER

Drawing title/Titre du dessin

SECTION 1  
REVISED

(REFER TO DWG. S202)

Consultant Signature Only

Designed by/Concept par  
LL

Drawn by/Dessiné par  
MC

PWSC Project Manager/Administrateur  
de Projets TPSCC

PWSC Regional Manager, Architecture and Engineering Services  
Administrateur Régional, Services Architecturaux et d'Ingénierie TPSCC

Project No./No. du projet  
R.073927.001

Scale/Echelle

N.T.S.


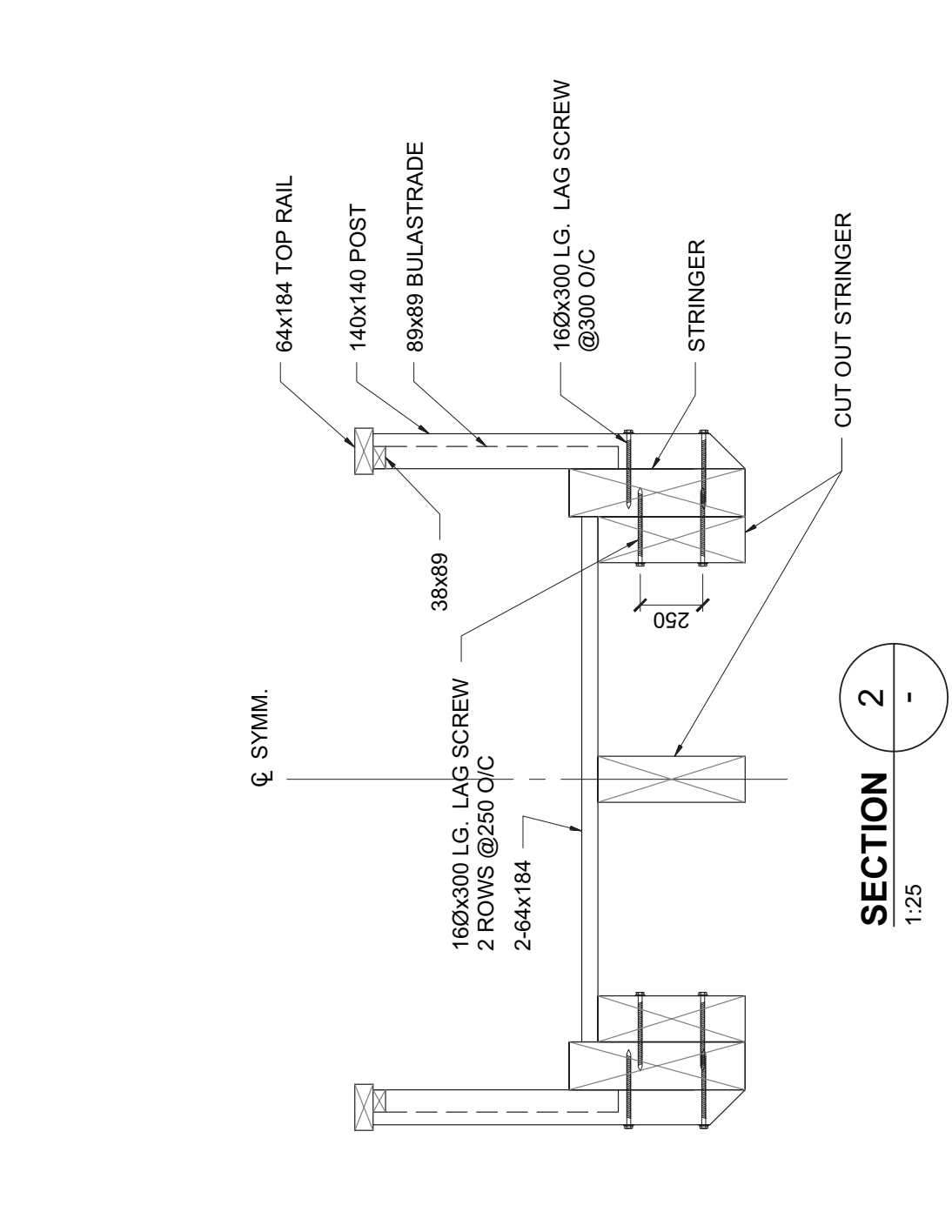
Date/Date

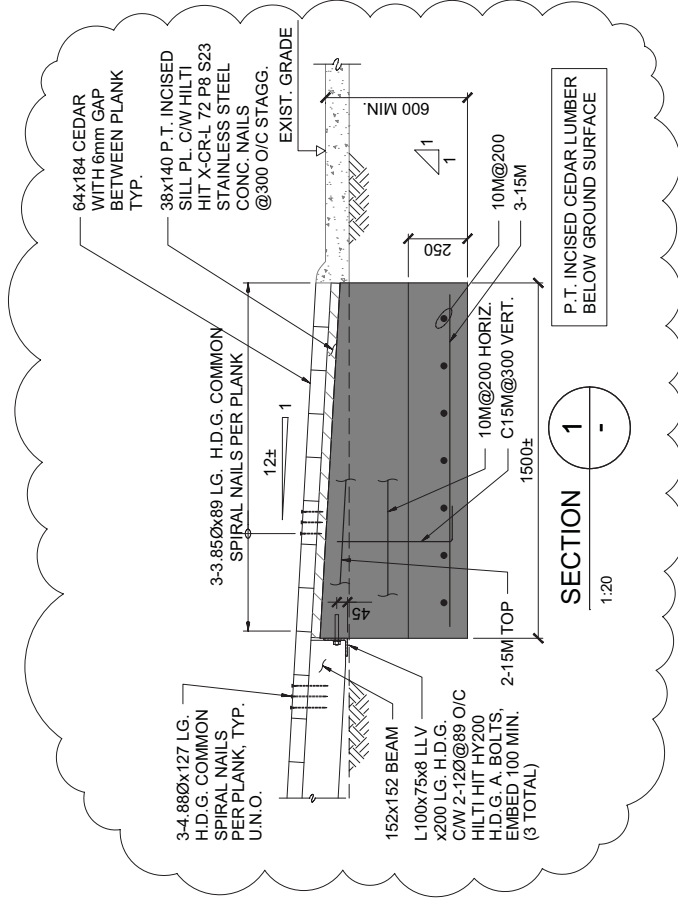
2015-06-30

Sheet/Fauille

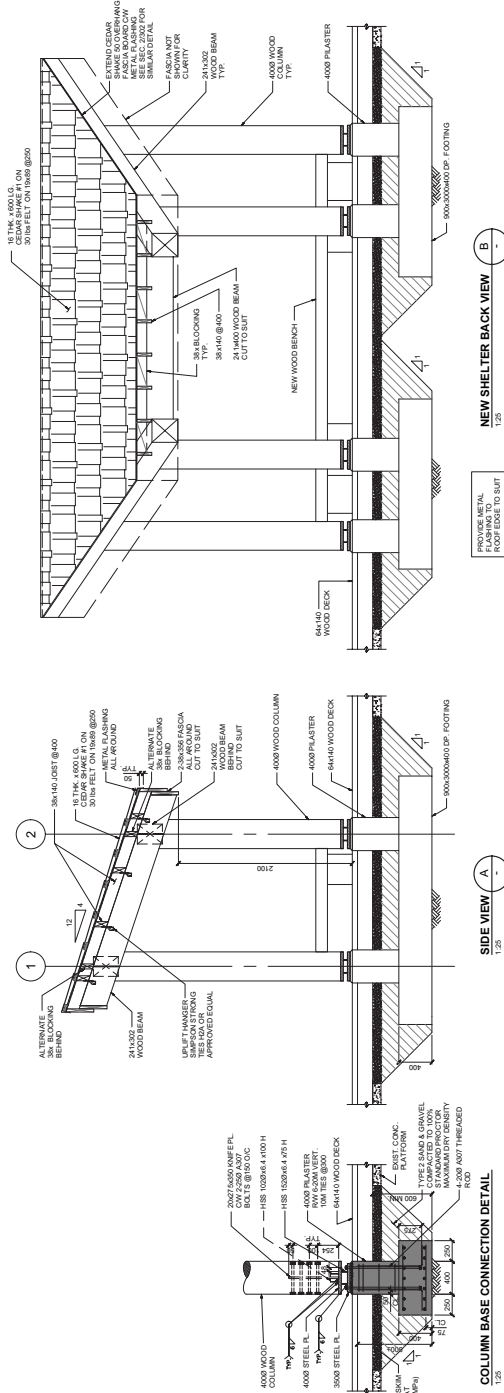
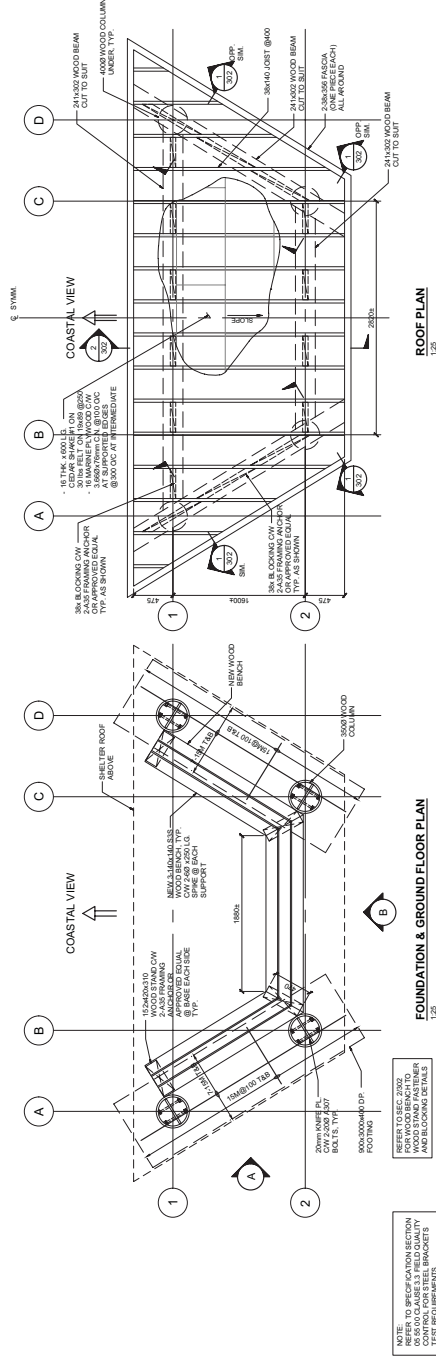
AD-02

Revision/  
Revision

<div>  <div> <div>Public Works and Government Services Canada</div> <div>Travaux publics et Services gouvernementaux Canada</div> </div> </div> <div> <div>REAL PROPERTY SERVICES</div> <div>Pacifique Region</div> </div> <div> <div>SERVICES IMMOBILIERS</div> <div>Région de Pacifique</div> </div>	<div>  <div> <div>SECTION 2</div> <div>1:25</div> </div> </div>	<div> <div>12186</div> <div>Project title/Titre du projet</div> <div>RADAR HILL VIEWPOINT SHELTER</div> </div> <div> <div>Drawing title/Titre du dessin</div> <div>SECTION 2 REVISED (REFER TO DWG. S202)</div> </div> <div> <div>Consultant Signature Only</div> <div> <div>PWSCC Project Manager/Administrateur de Projets TPSCC</div> <div> <div>DESIGNED BY/CONCEPT PAR</div> <div>LL</div> </div> <div> <div>DRAWN BY/DESSINE PAR</div> <div>MC</div> </div> </div> </div> <div> <div>Scale/Echelle</div> <div>AS SHOWN</div> </div> <div> <div>Date/Date</div> <div>2015-06-30</div> </div> <div> <div>Revision/Revision</div> <div>AD-03</div> </div> <div> <div>Project No./No. du projet</div> <div>R.073927.001</div> </div> <div> <div>Sheet/Fauille</div> <div>AD-03</div> </div> <div> <div>Revision/Revision</div> <div>AD-03</div> </div> <div> <div>Project No./No. du projet</div> <div>R.073927.001</div> </div> <div> <div>Sheet/Fauille</div> <div>AD-03</div> </div> <div> <div>Revision/Revision</div> <div>AD-03</div> </div>
----------------------------------------------------------------------------------------------------------------------------------------------------------------------------------------------------------------------------------------------------------------------------------------------------------------------------------------------------------------------------------------------------------	----------------------------------------------------------------------------------------------------------------------------------------------------	------------------------------------------------------------------------------------------------------------------------------------------------------------------------------------------------------------------------------------------------------------------------------------------------------------------------------------------------------------------------------------------------------------------------------------------------------------------------------------------------------------------------------------------------------------------------------------------------------------------------------------------------------------------------------------------------------------------------------------------------------------------------------------------------------------------------------------------------------------------------------------------------------------------------------------------------------------------------------------------------------------------------------------------------------------------



AO - PWGSC - ANSI B-L2 - 11X17



Client/client	Project title/Titre du projet  <b>RADAR HILL VIEWPOINT SHELTER</b>	Drawing title/Titre du dessin  <b>SECTIONS REVISED (REFER TO DWG. S301)</b>	PWSSC Project Manager/Administrateur de Projets TPSSC TOM DUNPHY PWSSC Regional Manager, Environmental Engineering Services Gestionnaire régional, Services d'ingénierie de l'environnement PREETIPAL PAUL	Project No./No. du projet A-17-2027-001 Sheet/Feuille AD-05
			Consutant Signature & Date Only Designed by/Concept par Drawn by/Dessiné par	Date/Date 2015-06-30
			LL MC	