



## **ADDENDUM # 2**

**Date:** July 15, 2015

**Projet:** Main Building Biomass Heating (Building n° 35)

---

Bidders must make sure that their bids are based on the latest version of the tender documents published and take into consideration the following amendments and information, including any information provided on amendments or Q&As previously published for this project.

Bidders that do not comply with this requirement will be discarded.

---

### **1. APPENDIX B – STATEMENT OF WORK**

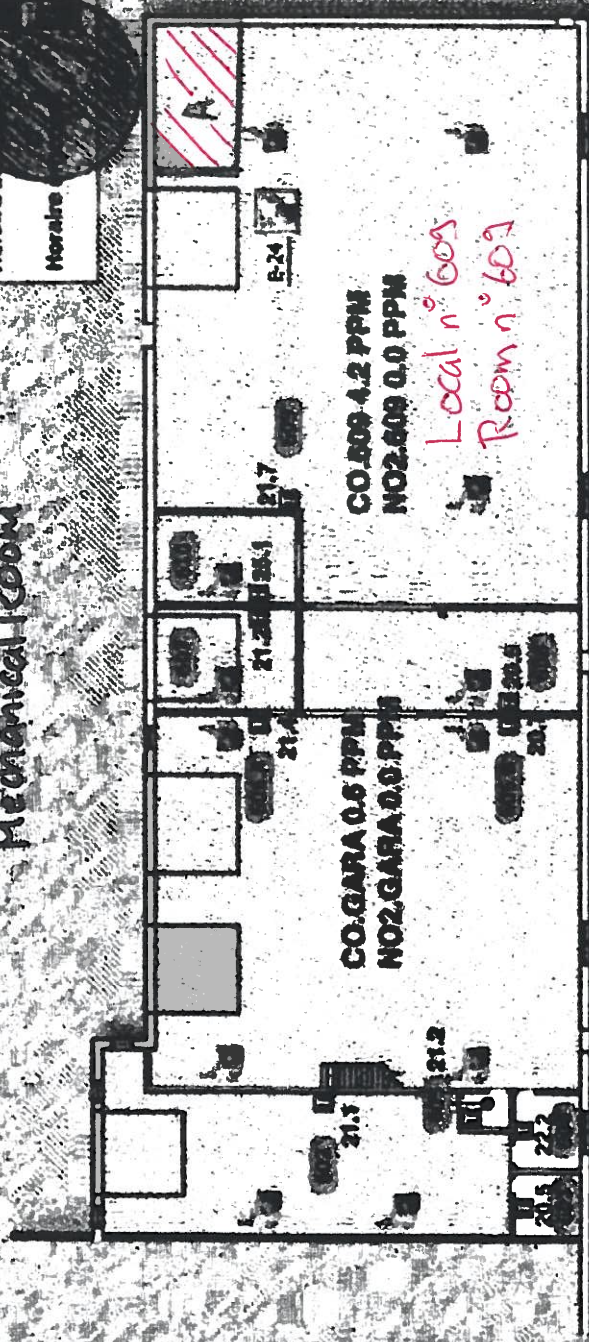
**ADD:**

Add at the end of Appendix B sketches attached to this Addendum.

---

**All other conditions and requirements remain unchanged**

● = Silo Extérieur - Exterior Site  
A = Salle Mécanique - Mechanical Room



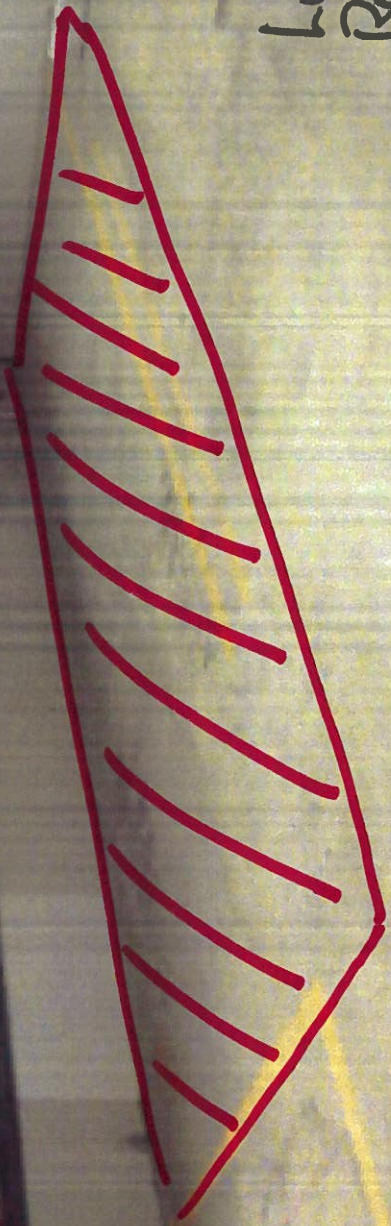
- Matières
- Vue en plan
- Systèmes
- Systèmes divers

- Legende
- Système Evacuateur
- Legende
- Système 21-AR



Option n°1

Local n° 609  
Room n° 609



Option n° 1 - Vue intérieure - Inside view



Option n° 1 - Vue extérieure - Outside View

23.0 °C

45.2 %

96.6 kW

Ferme expérimentale Normandin

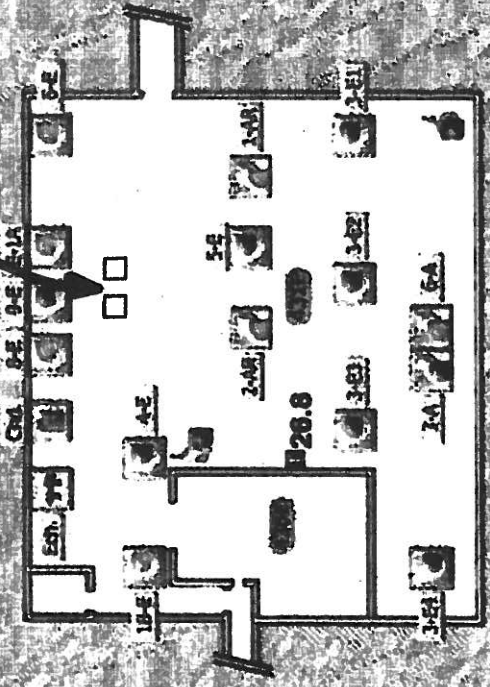
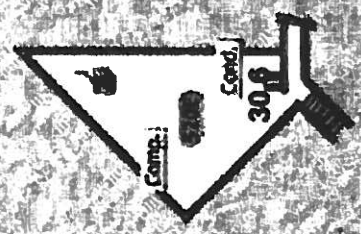
boisillères à l'huile  
oil boilers

- Mesure principale
- Vue en plan
- Systemes
- Systemes d'évacuation

ECLAIRAGE

Mercredi 14/08/2013

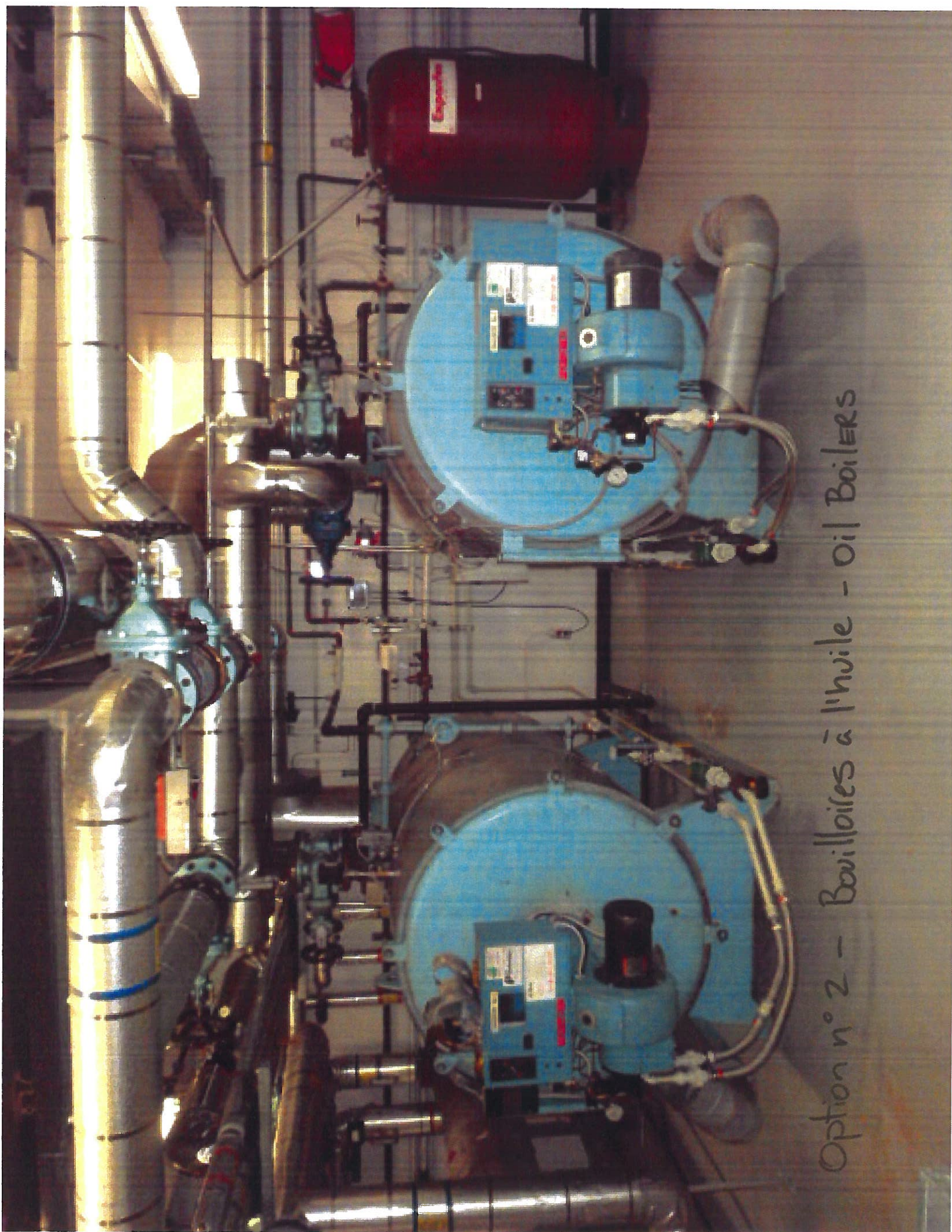
Horaires urgences:



Légende

Systeme  
Evacuation

Option n°2



Option n° 2 - Bouilloires à l'huile - oil Boilers