

Part 1 ADDENDUM NO.3

1.1 General

- .1 This Addendum is issued prior to tender closing and shall become an integral part of the Tender, Specifications, Drawings and Contract Documents for this project.
- .2 In the event of conflicts between the various Contract Documents, the order of precedence shall be as stipulated in the General Conditions of the Contract, except that this Addendum shall take overall precedence.

Part 2 Drawings

2.1 M2.0 – Main Floor Heating

- .1 Updated Radiation

2.2 M2.1 – Second Floor Heating

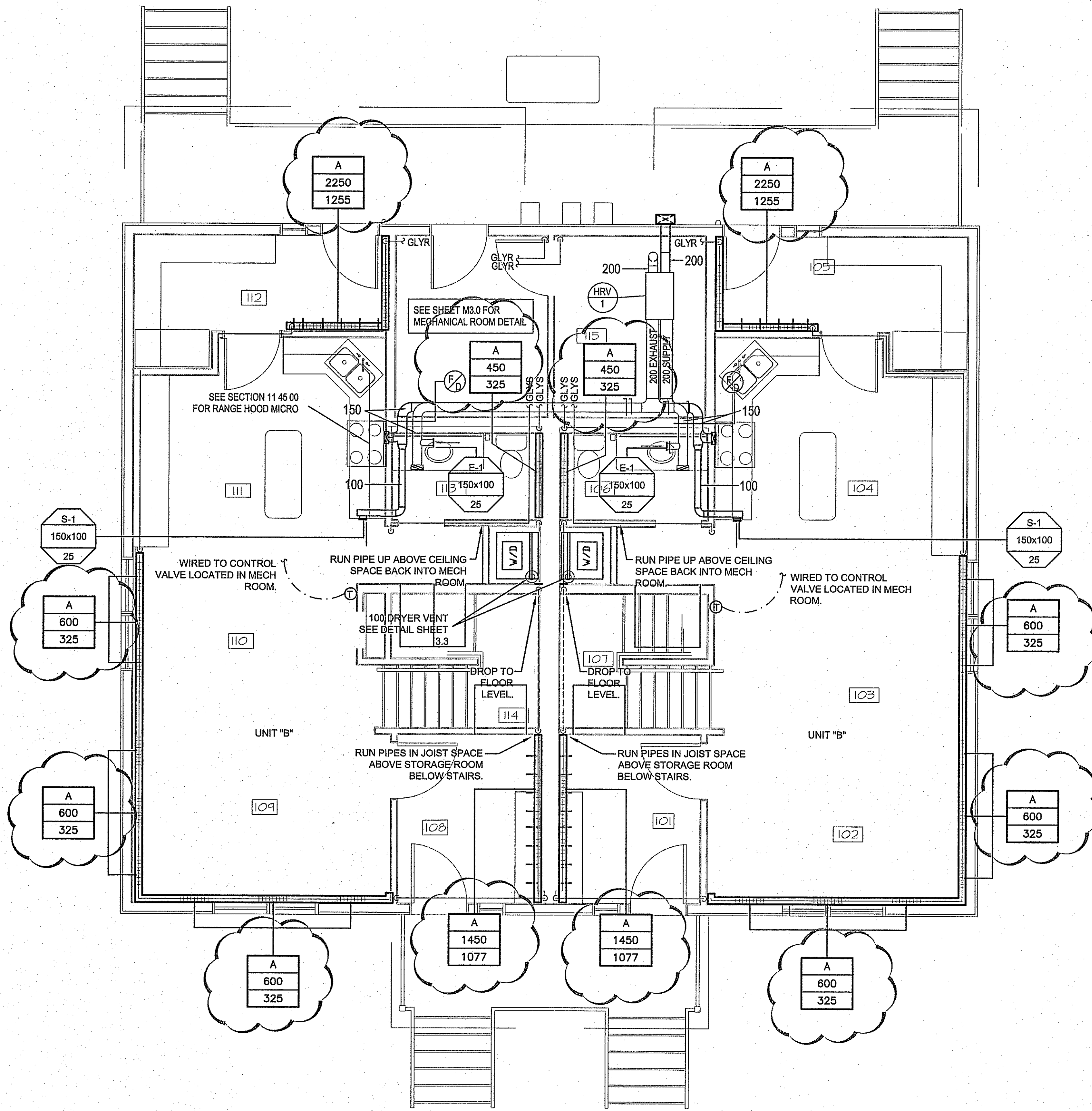
- .1 Updated Radiation

Part 3 Specification

3.1 Section 23 82 00

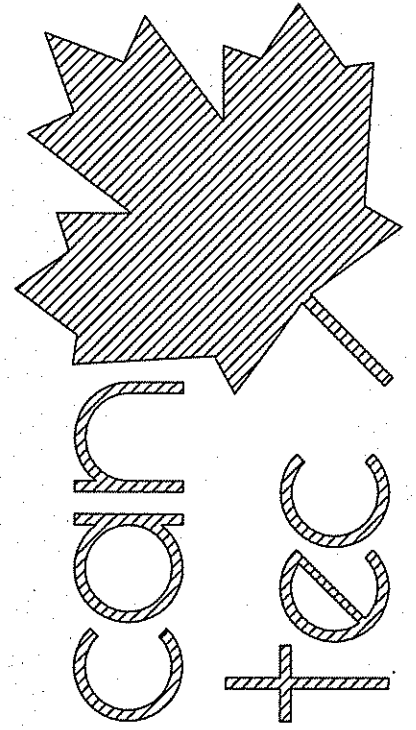
- .1 Remove Section 2.1 Baseboard Radiation
- .2 Replace with the following.
 - 2.1 Baseboard Radiation
 - .1 Manufacturer: Weil-McLain Model Snug Baseboard.
 - .2 Other acceptable manufacturers offering equivalent products.
 - .1 Substitutions: [Refer to Section 01 62 00.]
 - .3 Heating Elements: Cast iron panels with rear fins.
 - .4 Enclosure: Cast iron panel with 243 mm high back and top of one piece; front panel, end panel, end caps, corners, and joiner pieces to snap together, with front panel easily removable.
 - .5 Finish: Cast iron.
 - .6 Capacity: As shown in drawings, based on 18 degree C entering air temperature, 82 degree C average water temperature.

END OF SECTION



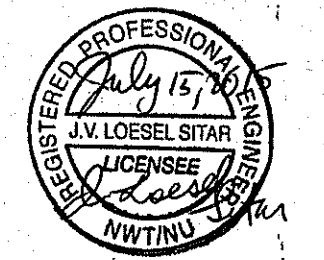
NOTE:
 IT IS THE RESPONSIBILITY OF THE CONTRACTOR TO PROVIDE A COMPLETE WORKING SYSTEM FOR ALL MECHANICAL SYSTEMS.
 ALL REQUIRED EQUIPMENT MAY NOT BE SHOWN ON THE DRAWINGS AND SPECIFICATIONS AND IT IS THE MECHANICAL CONTRACTORS RESPONSIBILITY TO INCLUDE THOSE ITEMS.

THIS DRAWING MUST NOT BE SCALED.
 THE GENERAL CONTRACTOR SHALL VERIFY ALL DIMENSIONS, DATUMS AND LEVELS PRIOR TO COMMENCEMENT OF WORK AND IS HELD RESPONSIBLE FOR REPORTING ANY DISCREPANCY OR OMISSION TO CAN-TEC SERVICES LTD. IMMEDIATELY.
 THIS DRAWING IS THE EXCLUSIVE PROPERTY OF CAN-TEC SERVICES LTD. AND CAN BE REPRODUCED ONLY WITH THE PERMISSION OF CAN-TEC SERVICES LTD. IN WHICH CASE THE REPRODUCTION MUST BEAR THEIR NAME AS THE ENGINEERING DRAFTING FIRM.



ENGINEERING AND DRAFTING
 1948 MAIN STREET, WINNIPEG, MANITOBA
 Tel: (204) 943-7222 Fax: (204) 947-5717
<http://www.cantecservices.ca/>

SEALED BY:



CHECKED BY
RS

DRAWN BY
RS

SCALE
AS NOTED

LOCATION
PANGNIRTUNG, NUNAVUT, CANADA

PROJECT TITLE
PANGNIRTUNG DUPLEX
 SHEET TITLE
MAIN FLOOR - HEATING

ISSUED FOR TENDER

M2.0

REVISION # 03
 JOB NO.
15-020-01-11

PERMIT TO PRACTICE
 CAN-TEC SERVICES LTD.
 Signature *J. Loesel Sitar*
 Date *July 15, 2015*
 PERMIT NUMBER: P 647
 NWT/NU Association of Professional
 Engineers and Geoscientists

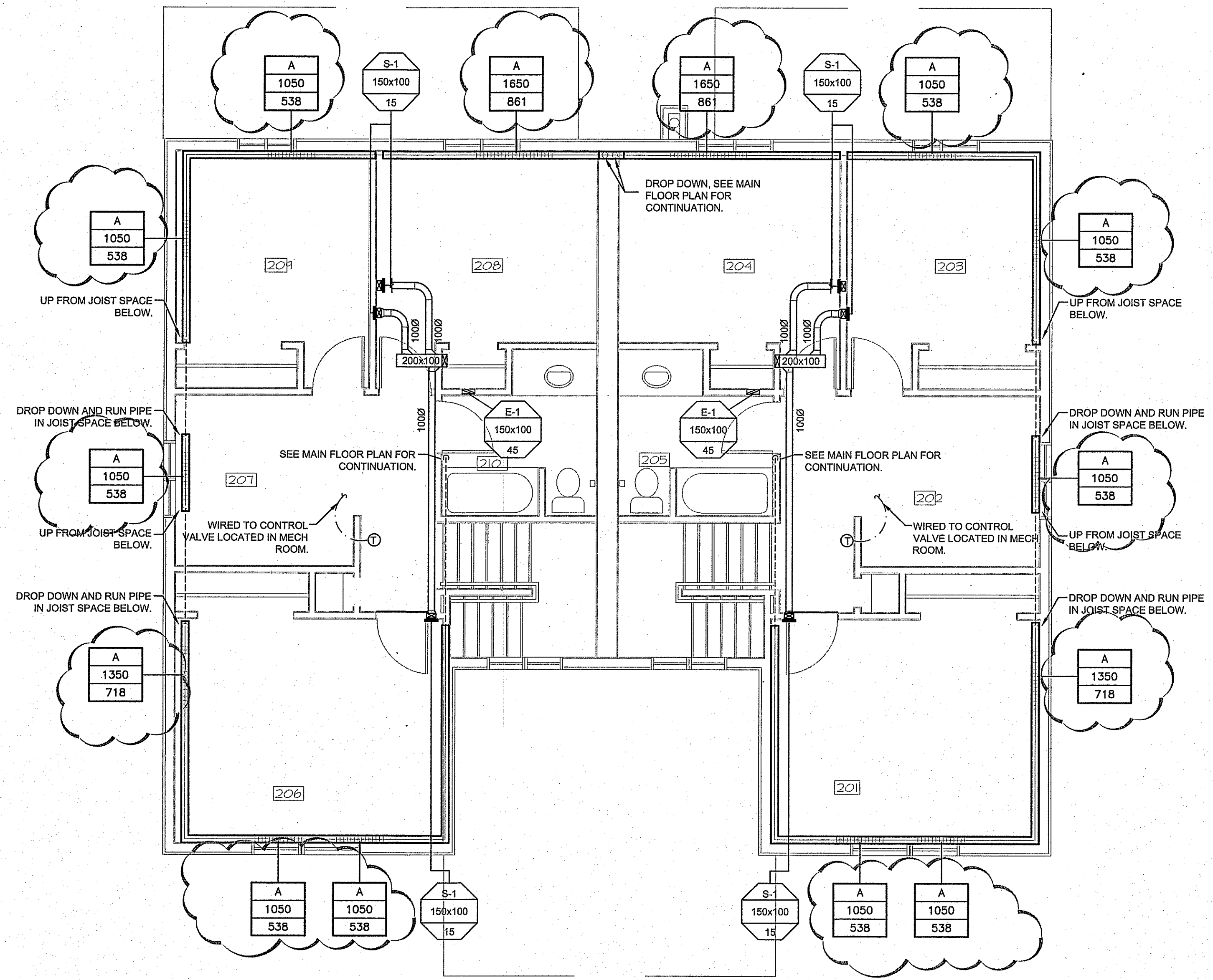
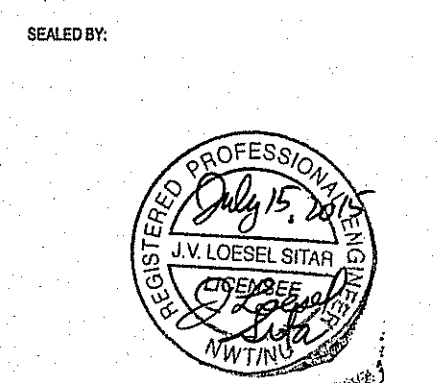
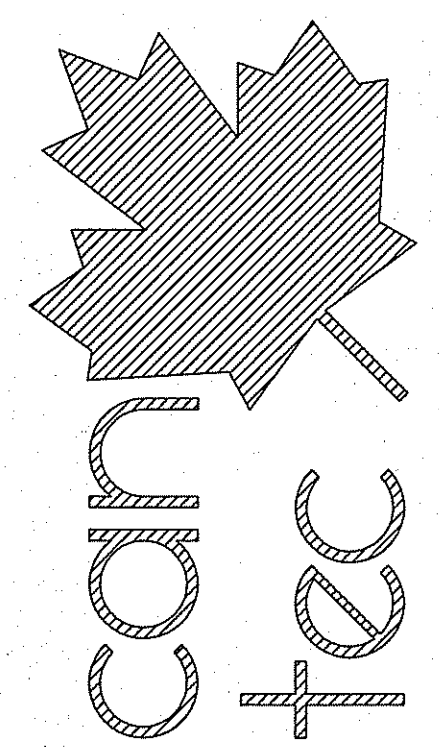
| REV. # | REVISION | DATE (YY MM DD) | REV. BY |
|--------|---------------------------|-----------------|---------|
| 03 | ISSUED FOR ADDENDUM NO. 3 | 15 07 15 | JLS |
| 02 | ISSUED FOR ADDENDUM NO 2 | 15 07 10 | JLS |
| 01 | ISSUED FOR TENDER | 15 06 15 | JLS |
| 00 | ISSUED FOR REVIEW | 15 05 08 | RS |

1 MAIN FLOOR PLAN - HEATING
 M2.0 SCALE: 1:50

NOTE:
 IT IS THE RESPONSIBILITY OF THE CONTRACTOR TO PROVIDE A COMPLETE WORKING SYSTEM FOR ALL MECHANICAL SYSTEMS.
 ALL REQUIRED EQUIPMENT MAY NOT BE SHOWN ON THE DRAWINGS AND SPECIFICATIONS AND IT IS THE MECHANICAL CONTRACTORS RESPONSIBILITY TO INCLUDE THOSE ITEMS.

THIS DRAWING MUST NOT BE SCALED.
 THE GENERAL CONTRACTOR SHALL VERIFY ALL DIMENSIONS, DATUMS AND LEVELS PRIOR TO COMMENCEMENT OF WORK AND IS HELD RESPONSIBLE FOR REPORTING ANY DISCREPANCY OR OMISSION TO CAN-TEC SERVICES LTD. IMMEDIATELY.
 THIS DRAWING IS THE EXCLUSIVE PROPERTY OF CAN-TEC SERVICES LTD. AND CAN BE REPRODUCED ONLY WITH THE PERMISSION OF CAN-TEC SERVICES LTD. IN WHICH CASE THE REPRODUCTION MUST BEAR THEIR NAME AS THE ENGINEERING/DRAFTING FIRM.

ENGINEERING AND DRAFTING
 1948 MAIN STREET, WINNIPEG, MANITOBA Tel: (204) 945-7222 Fax: (204) 947-5717 http://www.canteccservices.ca/



1 SECOND FLOOR PLAN - HEATING
 M2.0 SCALE: 1:50

PROJECT TITLE: PANGNIRTUNG DUPLEX
 SHEET TITLE: SECOND FLOOR - HEATING
 DATE (YY MM DD): 15 05 05
 SCALE: AS NOTED
 CHECKED BY: RS
 DRAWN BY: RS
 LOCATION: PANGNIRTUNG, NUNAVUT, CANADA

PERMIT TO PRACTICE
 CAN-TEC SERVICES LTD.
 Signature: *J. Loesel Sitar*
 Date: *July 15, 2015*
 PERMIT NUMBER: P 647
 NWT/NU Association of Professional Engineers and Geoscientists

ISSUED FOR TENDER
M2.1
 REVISION #: 02
 JOB NO.: 15-020-01-11

| REV. # | REVISION | DATE (YY MM DD) | REV. BY |
|--------|---------------------------|-----------------|---------|
| 02 | ISSUED FOR ADDENDUM NO. 3 | 15/07/15 | JLS |
| 01 | ISSUED FOR TENDER | 15/08/15 | JLS |
| 00 | ISSUED FOR REVIEW | 15/05/08 | RS |