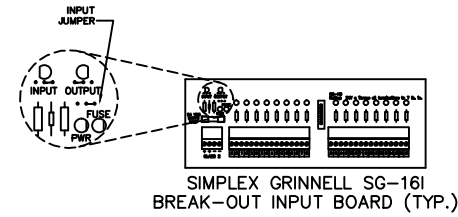
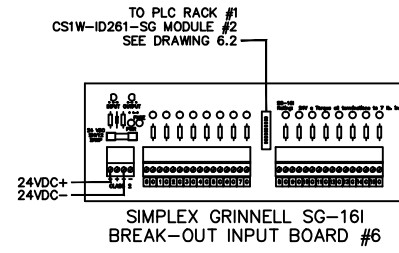


EQUIPMENT CABINET 1



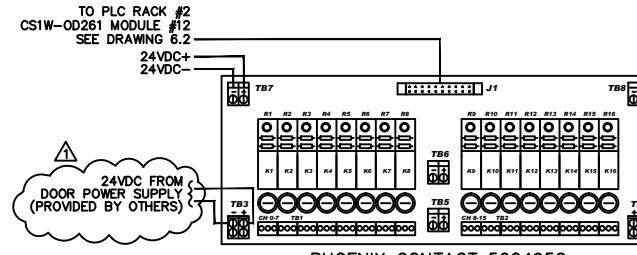
SIMPLEX GRINNELL SG-161 BREAK-OUT INPUT BOARD (TYP.)



SIMPLEX GRINNELL SG-161 BREAK-OUT INPUT BOARD #6

UNITS A & B

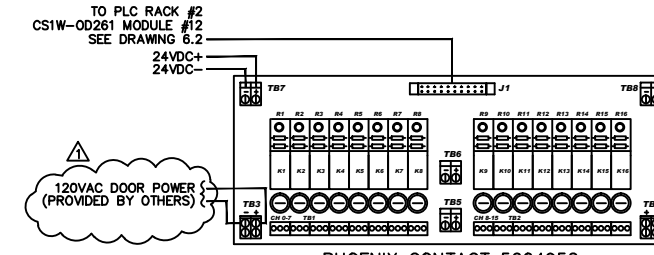
DOOR NUMBER	PIN	I/O
101	0C	6.00
101A	1C	6.01
-	2C	6.02
-	3C	6.03
-	4C	6.04
113	5C	6.05
-	6C	6.06
-	7C	6.07
-	8C	6.08
A122	9C	6.09
B233	10C	6.10
C122	11C	6.11
D122	12C	6.12
E222	13C	6.13
F222	14C	6.14
G222	15C	6.15
H222		



PHOENIX CONTACT 5604952 16-POINT 10 AMP RELAY BOARD #46

UNITS A & B

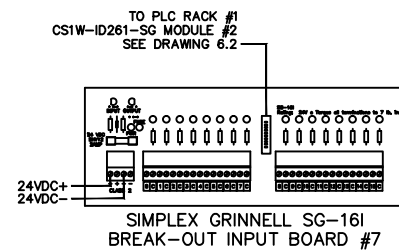
DOOR NUMBER	PIN	I/O
101	R1	46.00
101A	R2	46.01
-	R3	46.02
-	R4	46.03
-	R5	46.04
-	R6	46.05
-	R7	46.06
-	R8	46.07
-	R9	46.08
-	R10	46.09
-	R11	46.10
-	R12	46.11
-	R13	46.12
-	R14	46.13
-	R15	46.14
-	R16	46.15



PHOENIX CONTACT 5604952 16-POINT 10 AMP RELAY BOARD #47

UNITS A & B

DOOR NUMBER	PIN	I/O
A122	R1	47.00
B233	R2	47.01
C122	R3	47.02
D122	R4	47.03
E222	R5	47.04
F222	R6	47.05
G222	R7	47.06
H222	R8	47.07
-	R9	47.08
-	R10	47.09
-	R11	47.10
-	R12	47.11
-	R13	47.12
-	R14	47.13
-	R15	47.14
-	R16	47.15



SIMPLEX GRINNELL SG-161 BREAK-OUT INPUT BOARD #7

UNITS A & B

DOOR NUMBER	PIN	I/O
127	0C	7.00
301A	1C	7.01
301B	2C	7.02
301C	3C	7.03
301D	4C	7.04
-	5C	7.05
-	6C	7.06
-	7C	7.07
-	8C	7.08
-	9C	7.09
-	10C	7.10
-	11C	7.11
-	12C	7.12
-	13C	7.13
-	14C	7.14
110B MUSHRM. KILL SWITCH	15C	7.15
303 COMM. RESET KEYSWITCH		

GENERAL NOTES:

- SEE DRAWING 6.3 FOR CABINET CABLE ROUTING.
- SEE DRAWING 7.4 FOR DETAILS OF EACH LOCK TYPE, KEYSWITCH, AND REX.

tyco / Fire & Security / SimplexGrinnell

600 WINDMILL ROAD
UNIT C
DARTMOUTH, NS B3B 1B5
(902) 468-9100

NO.	DATE	REVISION DESCRIPTION
1	6/21/06	REVISED PER MISC CHANGES. RETURNED SUBMITTAL & RFTS
2	1/17/07	ASBUILT REVISIONS

LOCKING CONTROL HEADEND TERMINATIONS
UNITS A & B

SPRINGHILL INSTITUTION REDEVELOPMENT PHASE II
SPRINGHILL, NOVA SCOTIA

DRAWN BY:	DATE:
KP	2/10/06
DESIGNED BY:	DATE:
CH	2/10/06
APPROVED BY:	DATE:
CH	2/10/06
PROJECT NUMBER:	
SHEET TITLE:	LOCKING CONTROL HEADEND TERMINATIONS
SHEET NUMBER:	7.3

© 2007 SIMPLEX GRINNELL LTD. ALL RIGHTS RESERVED.