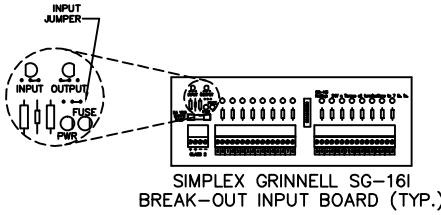
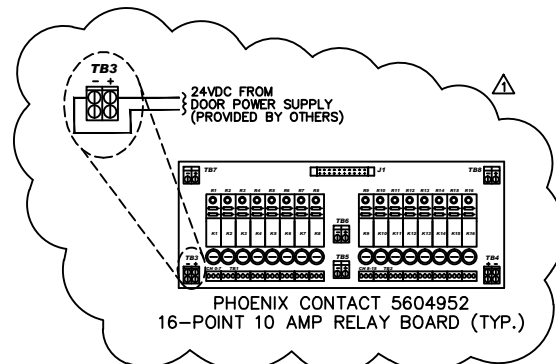


EQUIPMENT CABINET 1



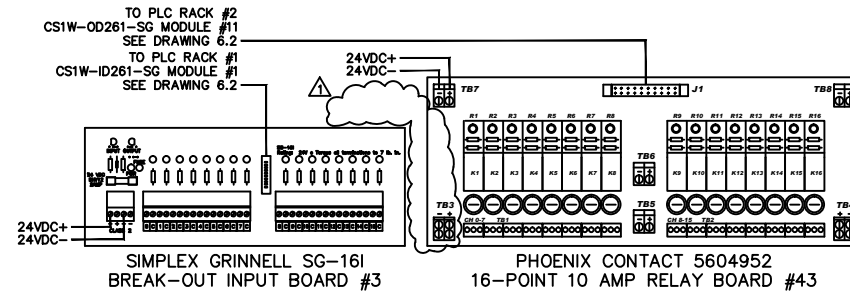
SIMPLEX GRINNELL SG-161
BREAK-OUT INPUT BOARD (TYP.)



PHOENIX CONTACT 5604952
16-POINT 10 AMP RELAY BOARD (TYP.)

GENERAL NOTES:

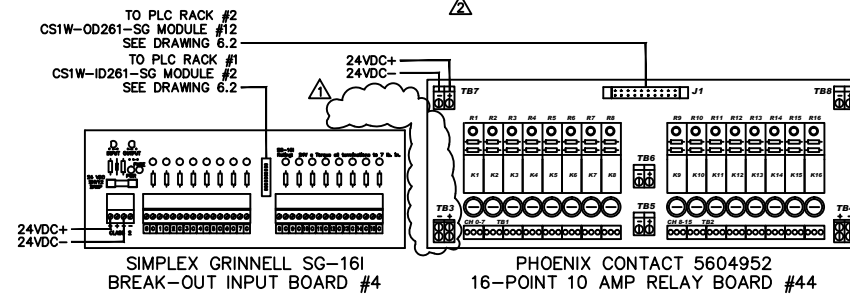
- SEE DRAWING 6.3 FOR CABINET CABLE ROUTING.
- SEE DRAWING 7.4 FOR DETAILS OF EACH LOCK TYPE, KEYSWITCH, AND REX.



SIMPLEX GRINNELL SG-161
BREAK-OUT INPUT BOARD #3

UNITS A & B

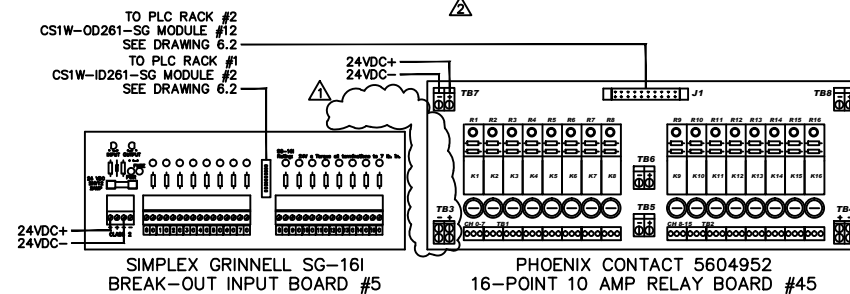
DOOR NUMBER	SG-161 BOARD #3		5604952 BOARD #43	
	PIN	I/O	PIN	I/O
E201	0C	3.00	R1	43.00
E202	1C	3.01	R2	43.01
E203	2C	3.02	R3	43.02
E204	3C	3.03	R4	43.03
E205	4C	3.04	R5	43.04
E206	5C	3.05	R6	43.05
E207	6C	3.06	R7	43.06
E208	7C	3.07	R8	43.07
E209	8C	3.08	R9	43.08
E210	9C	3.09	R10	43.09
E211	10C	3.10	R11	43.10
E212	11C	3.11	R12	43.11
F201	12C	3.12	R13	43.12
F202	13C	3.13	R14	43.13
F203	14C	3.14	R15	43.14
F204	15C	3.15	R16	43.15



SIMPLEX GRINNELL SG-161
BREAK-OUT INPUT BOARD #4

UNITS A & B

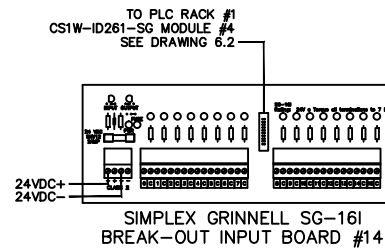
DOOR NUMBER	SG-161 BOARD #4		5604952 BOARD #44	
	PIN	I/O	PIN	I/O
F206	0C	4.00	R1	44.00
F207	1C	4.01	R2	44.01
F208	2C	4.02	R3	44.02
F209	3C	4.03	R4	44.03
F210	4C	4.04	R5	44.04
F211	5C	4.05	R6	44.05
F212	6C	4.06	R7	44.06
G201	7C	4.07	R8	44.07
G202	8C	4.08	R9	44.08
G203	9C	4.09	R10	44.09
G204	10C	4.10	R11	44.10
G205	11C	4.11	R12	44.11
G206	12C	4.12	R13	44.12
G207	13C	4.13	R14	44.13
G208	14C	4.14	R15	44.14
G208	15C	4.15	R16	44.15



SIMPLEX GRINNELL SG-161
BREAK-OUT INPUT BOARD #5

UNITS A & B

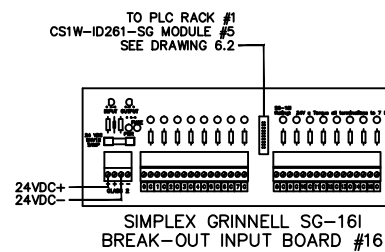
DOOR NUMBER	SG-161 BOARD #5		5604952 BOARD #45	
	PIN	I/O	PIN	I/O
G209	0C	5.00	R1	45.00
G210	1C	5.01	R2	45.01
G211	2C	5.02	R3	45.02
G212	3C	5.03	R4	45.03
H201	4C	5.04	R5	45.04
H202	5C	5.05	R6	45.05
H203	6C	5.06	R7	45.06
H204	7C	5.07	R8	45.07
H205	8C	5.08	R9	45.08
H206	9C	5.09	R10	45.09
H207	10C	5.10	R11	45.10
H208	11C	5.11	R12	45.11
H209	12C	5.12	R13	45.12
H210	13C	5.13	R14	45.13
H211	14C	5.14	R15	45.14
H212	15C	5.15	R16	45.15



SIMPLEX GRINNELL SG-161
BREAK-OUT INPUT BOARD #14

UNITS A & B

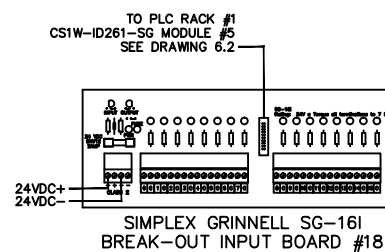
DOOR NUMBER	SG-161 BOARD #14		I/O
	PIN	I/O	
E209	0C	14.00	14.00
E201 REX	1C	14.01	14.01
E202 KEYSW	2C	14.02	14.02
E202 REX	3C	14.03	14.03
E203 KEYSW	4C	14.04	14.04
E203 REX	5C	14.05	14.05
E204 KEYSW	6C	14.06	14.06
E204 REX	7C	14.07	14.07
E205 KEYSW	8C	14.08	14.08
E205 REX	9C	14.09	14.09
E206 KEYSW	10C	14.10	14.10
E206 REX	11C	14.11	14.11
E207 KEYSW	12C	14.12	14.12
E207 REX	13C	14.13	14.13
E208 KEYSW	14C	14.14	14.14
E208 REX	15C	14.15	14.15



SIMPLEX GRINNELL SG-161
BREAK-OUT INPUT BOARD #16

UNITS A & B

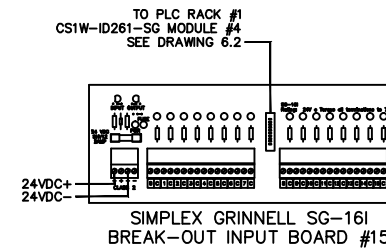
DOOR NUMBER	SG-161 BOARD #16		I/O
	PIN	I/O	
F205 KEYSW	0C	16.00	16.00
F205 REX	1C	16.01	16.01
F206 KEYSW	2C	16.02	16.02
F206 REX	3C	16.03	16.03
F207 KEYSW	4C	16.04	16.04
F207 REX	5C	16.05	16.05
F208 KEYSW	6C	16.06	16.06
F208 REX	7C	16.07	16.07
F209 KEYSW	8C	16.08	16.08
F209 REX	9C	16.09	16.09
F210 KEYSW	10C	16.10	16.10
F210 REX	11C	16.11	16.11
F211 KEYSW	12C	16.12	16.12
F211 REX	13C	16.13	16.13
F212 KEYSW	14C	16.14	16.14
F212 REX	15C	16.15	16.15



SIMPLEX GRINNELL SG-161
BREAK-OUT INPUT BOARD #18

UNITS A & B

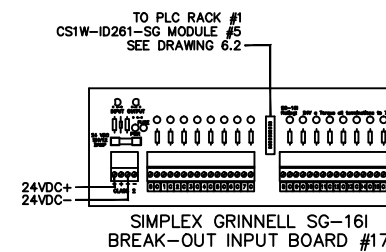
DOOR NUMBER	SG-161 BOARD #18		I/O
	PIN	I/O	
G209 KEYSW	0C	18.00	18.00
G209 REX	1C	18.01	18.01
G210 KEYSW	2C	18.02	18.02
G210 REX	3C	18.03	18.03
G211 KEYSW	4C	18.04	18.04
G211 REX	5C	18.05	18.05
G212 KEYSW	6C	18.06	18.06
G212 REX	7C	18.07	18.07
H201 KEYSW	8C	18.08	18.08
H201 REX	9C	18.09	18.09
H202 KEYSW	10C	18.10	18.10
H202 REX	11C	18.11	18.11
H203 KEYSW	12C	18.12	18.12
H203 REX	13C	18.13	18.13
H204 KEYSW	14C	18.14	18.14
H204 REX	15C	18.15	18.15



SIMPLEX GRINNELL SG-161
BREAK-OUT INPUT BOARD #15

UNITS A & B

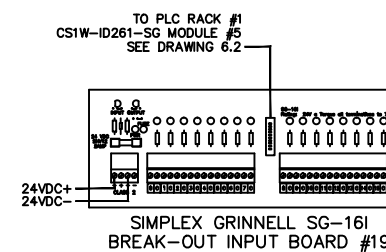
DOOR NUMBER	SG-161 BOARD #15		I/O
	PIN	I/O	
E209 KEYSW	0C	15.00	15.00
E209 REX	1C	15.01	15.01
E210 KEYSW	2C	15.02	15.02
E210 REX	3C	15.03	15.03
E211 KEYSW	4C	15.04	15.04
E211 REX	5C	15.05	15.05
E212 KEYSW	6C	15.06	15.06
E212 REX	7C	15.07	15.07
F201 KEYSW	8C	15.08	15.08
F201 REX	9C	15.09	15.09
F202 KEYSW	10C	15.10	15.10
F202 REX	11C	15.11	15.11
F203 KEYSW	12C	15.12	15.12
F203 REX	13C	15.13	15.13
F204 KEYSW	14C	15.14	15.14
F204 REX	15C	15.15	15.15



SIMPLEX GRINNELL SG-161
BREAK-OUT INPUT BOARD #17

UNITS A & B

DOOR NUMBER	SG-161 BOARD #17		I/O
	PIN	I/O	
G201 KEYSW	0C	17.00	17.00
G201 REX	1C	17.01	17.01
G202 KEYSW	2C	17.02	17.02
G202 REX	3C	17.03	17.03
G203 KEYSW	4C	17.04	17.04
G203 REX	5C	17.05	17.05
G204 KEYSW	6C	17.06	17.06
G204 REX	7C	17.07	17.07
G205 KEYSW	8C	17.08	17.08
G205 REX	9C	17.09	17.09
G206 KEYSW	10C	17.10	17.10
G206 REX	11C	17.11	17.11
G207 KEYSW	12C	17.12	17.12
G207 REX	13C	17.13	17.13
G208 KEYSW	14C	17.14	17.14
G208 REX	15C	17.15	17.15



SIMPLEX GRINNELL SG-161
BREAK-OUT INPUT BOARD #19

UNITS A & B

DOOR NUMBER	SG-161 BOARD #19		I/O
	PIN	I/O	
H205 KEYSW	0C	19.00	19.00
H205 REX	1C	19.01	19.01
H206 KEYSW	2C	19.02	19.02
H206 REX	3C	19.03	19.03
H207 KEYSW	4C	19.04	19.04
H207 REX	5C	19.05	19.05
H208 KEYSW	6C	19.06	19.06
H208 REX	7C	19.07	19.07
H209 KEYSW	8C	19.08	19.08
H209 REX	9C	19.09	19.09
H210 KEYSW	10C	19.10	19.10
H210 REX	11C	19.11	19.11
H211 KEYSW	12C	19.12	19.12
H211 REX	13C	19.13	19.13
H212 KEYSW	14C	19.14	19.14
H212 REX	15C	19.15	19.15

Fire & Security / SimplexGrinnell

tyco

600 WINDMILL ROAD
DARTMOUTH, NS B3B 1B5
(902) 468-9100

NO.	DATE	REVISION DESCRIPTION
1	6/21/06	REVISED PER MISC CHANGES, RETURNED SUBMITTAL & RFTS
2	1/17/07	ASBUILT REVISIONS

LOCKING CONTROL HEADEND TERMINATIONS
UNITS A & B

SPRINGHILL INSTITUTION REDEVELOPMENT PHASE II
SPRINGHILL, NOVA SCOTIA

DRAWN BY:	DATE:
KP	2/10/06

DESIGNED BY:	DATE:
CH	2/10/06

APPROVED BY:	DATE:
CH	2/10/06

PROJECT NUMBER:

SHEET TITLE:
LOCKING CONTROL HEADEND TERMINATIONS

SHEET NUMBER:
7.2