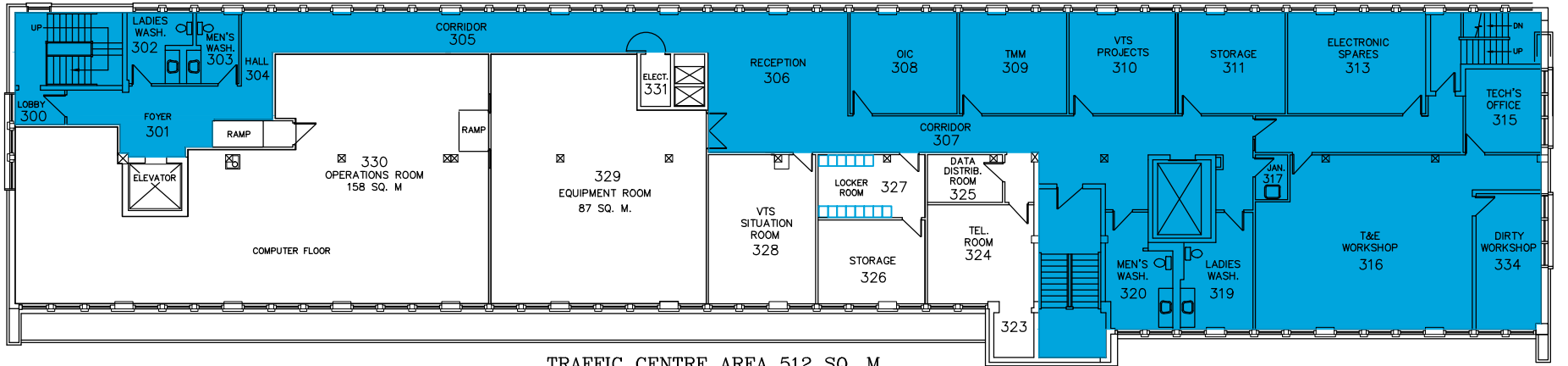
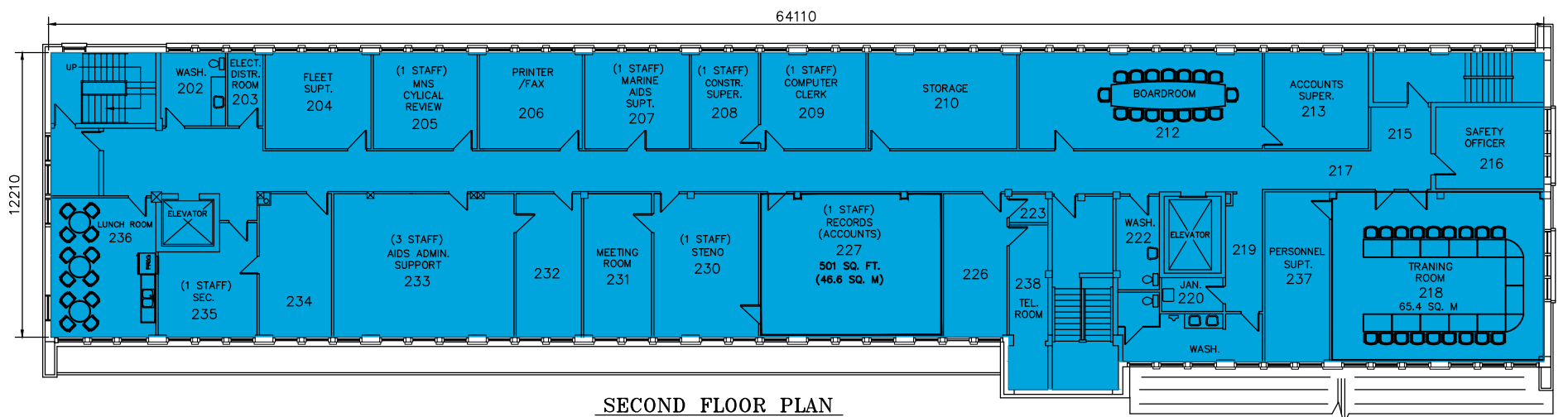


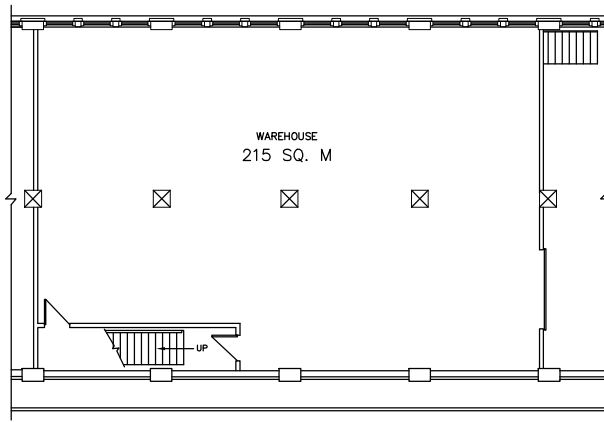
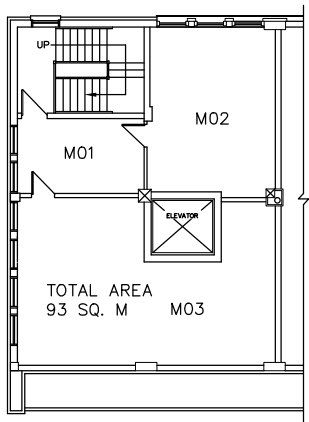
TOTAL AREA APPROX. 800 SQ. M
FOURTH FLOOR PLAN



TRAFFIC CENTRE AREA 512 SQ. M.
TOTAL FLOOR AREA 800 SQ. M
THIRD FLOOR PLAN

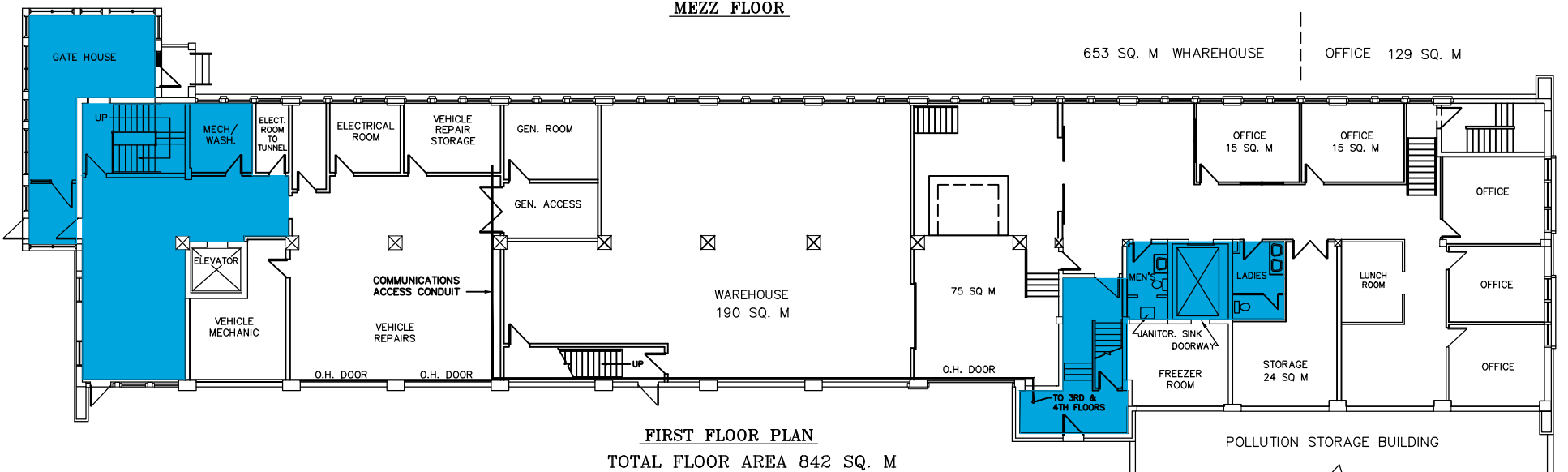


SECOND FLOOR PLAN
TOTAL FLOOR AREA 800 SQ. M



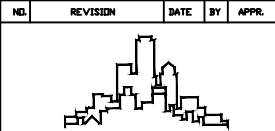
MEZZ FLOOR

SHOWN AS AREAS TO BE CLEANED



FIRST FLOOR PLAN
TOTAL FLOOR AREA 842 SQ. M

653 SQ. M WAREHOUSE OFFICE 129 SQ. M

A					DEPARTMENT OF FISHERIES AND OCEANS MARITIMES REGION DARTMOUTH, N.S.			
NO.	REVISION	DATE	BY	APPR.				
					SAINT JOHN BASE ADMIN BUILDING 2ND FLOORS			
								
REAL PROPERTY, SAFETY AND SECURITY CORPORATE SERVICES					DATE 1/6/2015	DRAWN DAN MacNEIL	CHECKED REFERENCE	APPR. ADMIN BUILDING

