

GENERAL NOTES

1.

EXTERIOR COLORS:  
- SHELTER: STANDARD GRAY  
- DOOR AND FRAMEWORK: STANDARD GRAY
2.

INTERIOR FINISH: WOOD MOLDINGS COVERED BY VINYL WILL COVER ALL THE GYPSUM-VINYL SHEETS JOINTS ON WALLS AND CEILING.
3.

ELECTRICITY :  
A. ALL EXTERIOR HARDWARE THUS WITHIN THE EXTERIOR ELECTRICAL BOXES MUST BE IN STAINLESS STEEL  
B. APPLY SEALANT (GRAY PASTE) IN EACH CONDUIT CONNECTING AN EXTERIOR ELECTRICAL BOX TO AN INTERIOR ELECTRICAL BOX IN ORDER TO ELIMINATE THE THERMAL BRIDGE.  
C. ALL ELECTRICAL WIRING WILL BE SURFACE MOUNTED INTO RIGID CONDUIT "E.M.T."

LEGEND

- 1

STEEL DOOR 36" X 84" (CALIBER 20) ISOLATED WITH POLYSTYRENE AND STEEL FRAMEWORK. FULL LENGTH WELDED 4" ASTRAGAL. CONSTRUCTION TYPE DEADBOLT.
- 2

WHITE WORKTABLE 18" X 48" 3 POSITIONS MECHANISM FOLDING TABLE (500 POUNDS CAPACITY)
- 3

CABLE ENTRY WITH TWO 5" Ø OPENINGS, SPACED 7" C/C. THE CENTER OF THE OPENINGS WILL BE INSTALLED AT 8" FROM THE FINISHED CEILING. **INSTALL A PVC CAP ON INNER AND OUTER ENDS.**
- 4

5" Ø ENTRANCE THRUE PLATE (COMMSCOPE # 48940-1). THE CENTER OF THE OPENING WILL BE INSTALLED AT 6" FROM FINISHED WALL (G). **INSTALL A 5" PVC CAP MICROFLECT TYPE ON INNER AND OUTER ENDS.**
- 5

AIR INLET DAMPER 12" X 12" («TAMCO» 9000 SERIES WITH A «BELIMO» MOTOR) TO FIT A 12" X 12" X 3/4" THIN FILTER. A FIBERGLASS MOSQUITOS SCREENED CAP. A BIRD SCREEN GRID AND AN ANTI-BURST TABLET. (SEE DETAILS IN **FIGURE E**, PAGE P-8).
- 6

AIR OUTLET DAMPER 12" X 12" («TAMCO» 9000 SERIES WITH A «BELIMO» MOTOR) PROVIDED WITH A FAN «CANARM» #S8B2 (150 CFM / 270 CFM) WITH NON-RETURN PROTECTION. A FIBERGLASS MOSQUITOS SCREENED CAP, A BIRD SCREEN GRID AND ANTI-BURST TABLET.
- 7

"Z" ALUMINUM BRACKETS 4" X 4" X 3/8" THIN BY 24" LARGE (SEE PLAN ON PAGE P-12).
- 8

PLYWOOD 48" X 96" X ¾" PAINTED IN GRAY FOR RECEIVING CUSTOMER ELECTRICAL EQUIPMENT. PHONE CONNECTION DEVICES AND EQUIPMENTS.
- 8A

PLYWOOD 23 ¼ " X 29" X ¾" PAINTED IN GRAY FOR RECEIVING SCREWS AND WASHERS FROM *MICROLETRIC MODEL MM400 (ITEM 39)* SUPPORTS FOR ELECTRICAL MAST.
- 9

1 ¼" Ø PVC CONDUIT, THROUGH THE FLOOR FOR EQUIPMENT GROUND CABLE.
- 10

GROUND EQUIPMENT BAR.
- 11

PLYWOOD 36" X 48" X ¾" PAINTED IN GRAY TO RECEIVE GROUND BAR AND TO FIX ANTENNA CABLES COMING THROUGH THE FLOOR.
- 12

BASEBOARD HEATER (750 WATTS #0FM0750BL) «OUELLET».
- 13

OUTDOOR PHOTO CONTROLLED LED LIGHTING. «COOPER LIGHTING» MODEL LUMARK XTOR CROSSTOUR XTOR2A-N-PC1. (20W, 120V) WITH PROTECTION GRID. CONTROLLED BY 120V/15AMP SINGLE POLE SWITCH TYPE LEVITON 1451 WITH PLATE BC11-C-5.
- 14

TIMER (WITH HOLD) 6 HOURS. INTERMATIC #FF6HH (FOR ITEMS 31 & 33).
- 15

OUTDOOR ELECTRICAL OUTLET WITH DIFFERENTIAL RELAY OF GROUND. (GROUND-FAULT) 120V/15AMP. LEVITON GFI7599-W WITH TYPE FS BOX AND A WEATHERPROOF TOP #WGF1510

- 16

TIMER (WITH HOLD) 60 MIN. INTERMATIC #FF60MH FOR OUTDOOR ELECTRICAL OUTLET (FOR ITEM 15)
- 17

ELECTRICAL DISTRIBUTION PANEL (PA) 120/240V, 1 PHASE, 3 WIRES, 100AMP / 24 CIRCUITS (CLIP-ON) «SQUARE D» INCLUDED FRONTAL DOOR #CQ0124M125C100. **DO NOT INSTALL MAIN BREAKER ON PANEL.**
- 18

MAIN SWITCH «SQUARE D» BRAND, FUSE 100 AMP 120V/240V. 1 PHASE, #CD223N, WITH CONDUCTOR #3 AWG. CONDUIT DIRECTLY TO THE FLOOR.
- 19

THERMOSTAT FAN «JOHNSON CONTROLS» #T26S-18C
- 20

HIGH TEMPERATURE THERMOSTAT «JOHNSON CONTROLS» T26S-18C
- 21

LOW TEMPERATURE THERMOSTAT «JOHNSON CONTROLS» T26S-18C
- 22

WALL THERMOSTAT FOR BASEBOARD HEATING «OUELLET» #OTL101-C
- 23

BIX BELDEN 10C/1X REG (DOOR CONTACT, FIRE ALARM, DC SUPPLY 9 VOLTS). **POSITIONED AS SHOWN ON PAGE P-7 (NO CHANGE).**
- 24

12" LARGE CABLE GUTTERS. LADDER TYPE.
- 25

1 ¼" Ø PVC CONDUIT THROUGH THE FLOOR FOR ELECTRICAL GROUND ENTRY.
- 26

3" Ø PVC CONDUIT THROUGH THE FLOOR FOR TELEPHONY ENTRY (T1). **INSTALL A PVC CAP ON INNER AND OUTER ENDS.**
- 27

SMOKE DETECTOR «KIDDE» P-1235CA WITH «KIDDE» RELAY SM120X
- 28

DUPLEX OUTLET «LEVITON» 125V /15AMP #5-15R MODEL T5320-W WITH PLATE BC11-C-1
- 29

TWIST-LOCK OUTLET 120V/15AMP «HUBBEL» HBL4710 WITH PLATE BC11-C-3
- 30

DOOR CONTACT «HONEYWELL» MODEL 7939-2GY. TO BE WIRED TO BIX ON PAIR #1 (NC) AND ON PAIR #2 (NO).
- 31

LINEAR LED REFLECTOR LIGHT «PHILIPS» BRAND FLUXSTREAM TYPE MODEL LF4FR3940ULAG.
- 32

120VOLTS/15AMP SINGLE POLE SWITCH (FOR ITEM 13).
- 33

LINEAR LED REFLECTOR LIGHT «PHILIPS» BRAND FLUXSTREAM TYPE MODEL LF8FR3940ULAG
- 34

RIGID E.M.T. CONDUIT 1" Ø (STARTING FROM THE DOOR CONTACT TO THE BIX TERMINAL) IN WHICH THE SPINNING OF THE DOOR CONTACT IS INSERTED. (SEE ELEVATIONS : « E » ON PAGE P-6 AND « F » ON PAGE P-7).
- 35

RIGID E.M.T. CONDUIT 1" Ø (STARTING FROM THE SMOKE DETECTOR DOWN TO THE BIX TERMINAL) INCLUDING A CABLE « QUAD TYPE » (4 WIRES, EACH OF 24 AWG) ENDING TO THE BIX TERMINAL.  
  
CONNECTIONS FROM RELAY SM120X IN THE SMOKE DETECTOR TO THE BIX TERMINAL HAVE TO BE : PAIR #3 = BLUE (COMMON CONTACT), YELLOW (NORMALLY CLOSED CONTACT), PAIR #4 = BLUE (COMMON CONTACT), ORANGE (NORMALLY OPEN CONTACT) AND PAIR#5 GRAY (9-VOLT DC OUTPUT). (SEE ELEVATION « F » ON PAGE P-6).
- 36

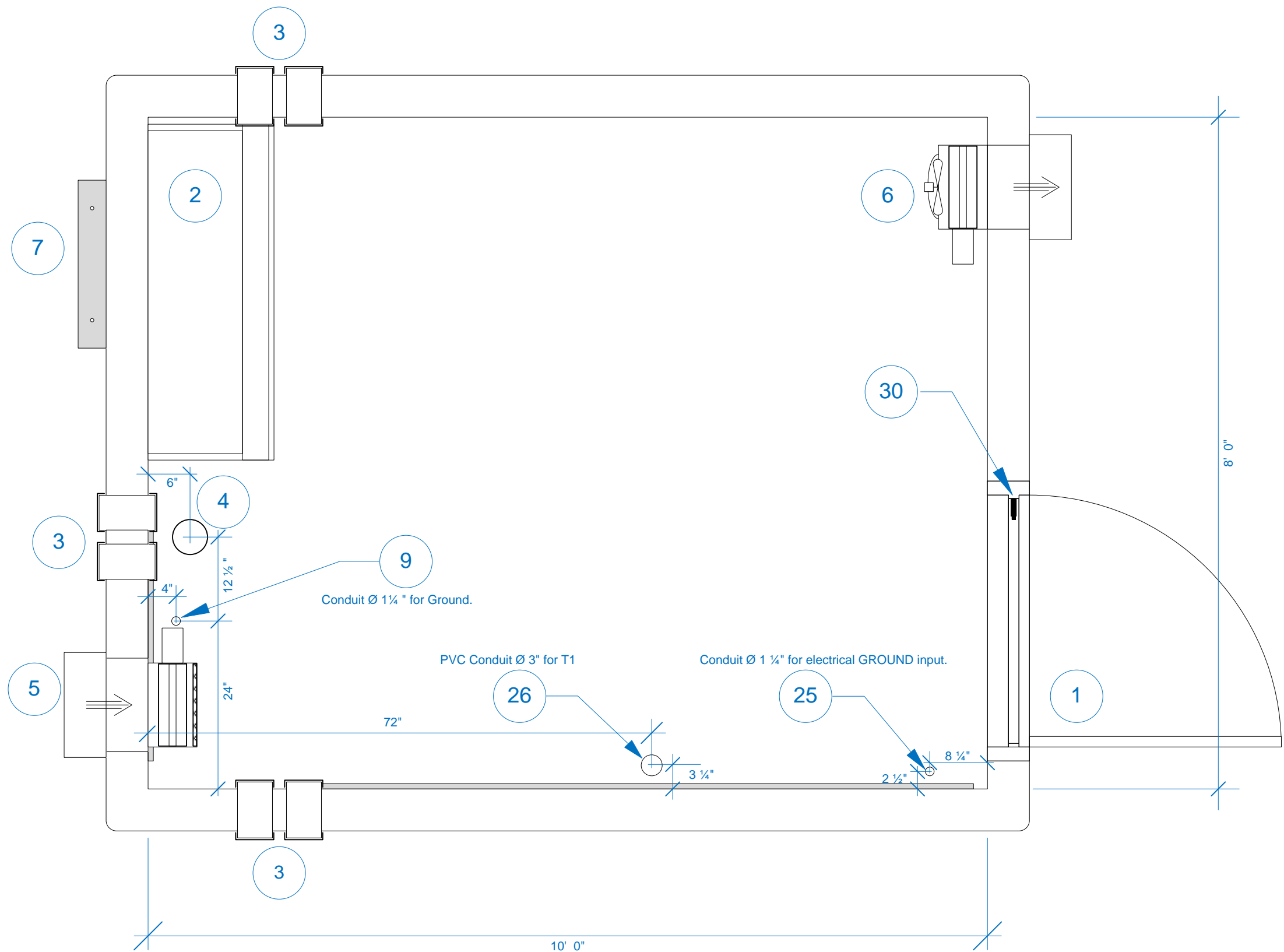
TYPE **LB** RIGID CONDUIT BODY. DIAMETER OF 1¼". USED TO JOIN THE METER SOCKET (ITEM 37) TO THE MAIN SWITCH (ITEM 18).
- 37

« MICROELECTRIC » MODEL **BA3-V** METER SOCKET, TYPE 3R, 100 AMP., 600 VOLTS MAX.
- 38

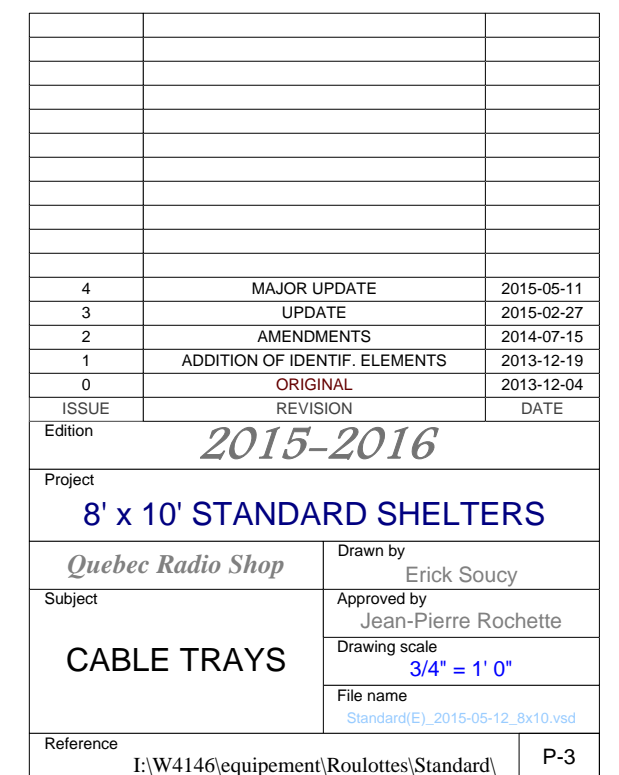
CHANNEL (COVER) 3 ½" WIDE FOR GROUND CABLE. (SEE **FIGURE D** ON PAGE P-12).
- 39

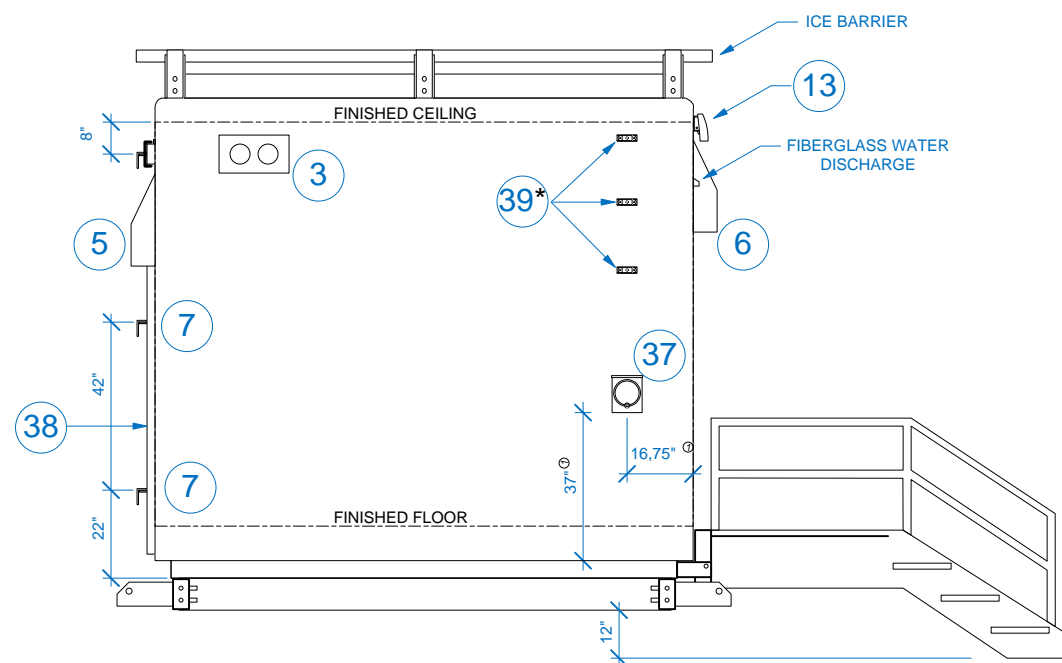
« MICROELECTRIC » MAST SUPPORT CLAMP. MODEL: MM400.

11	CORRECTIONS ON ITEMS DESCRIPTION	2015-05-12
10	MAJOR UPDATE	2015-05-11
9	ADDITION OF ITEMS 36 TO 39	2015-05-08
8	ADDITION OF COMMENTS	2015-03-31
7	TEXT CORRECTIONS (ITEMS 3 & 4)	2015-03-30
6	UPDATE & ADDITON OF ITEMS 34 & 35	2015-02-27
5	UPDATES AND DETAILS	2014-12-15
4	MODIF. & ADDITION OF COMMENTS	2014-12-10
3	LIGHTING MODIFICATIONS	2014-07-18
2	MODIFICATIONS & AMENDMENTS	2014-07-15
1	ADDITION OF COMMENTS	2014-01-10
0	ORIGINAL	2013-12-04
ISSUE	REVISION	DATE
Edition		
2015-2016		
Project		
8' x 10' STANDARD SHELTERS		
Quebec Radio Shop		Drawn by
		Erick Soucy
Subject		Approved by
		Jean-Pierre Rochette
GENERAL NOTES & LEGEND		Drawing scale
		1:1
		File name
		Standard(E)_2015-05-12_8x10.vsd
Reference		
I:\W4146\equipement\Roulottes\Standard\		P-1

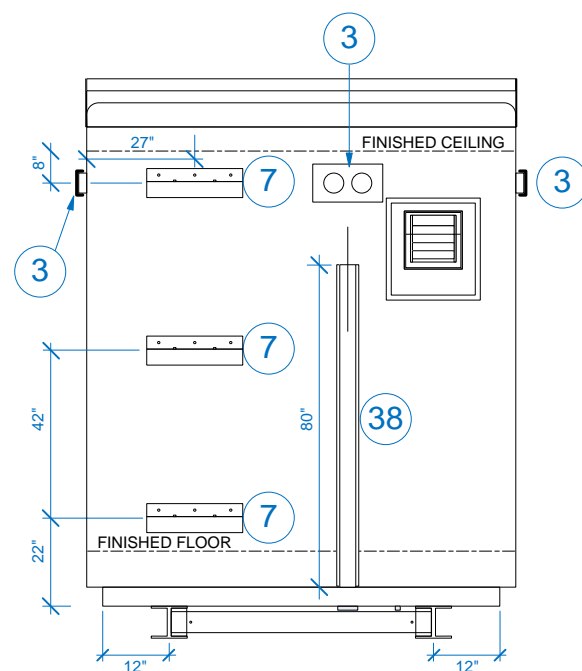


5	MAJOR UPDATE	2015-05-11
4	UPDATE	2015-02-27
3	AJOUT DES RÉFÉRENCES	2014-12-15
2	ADDITION OF INTERIOR DIMENSIONS	2014-12-10
1	AMENDMENTS	2014-07-15
0	ORIGINAL	2013-12-04
ISSUE	REVISION	DATE
Edition <b>2015-2016</b>		
Project <b>8' x 10' STANDARD SHELTERS</b>		
Subject <b>Quebec Radio Shop</b>		Drawn by Erick Soucy
<b>PLAN VIEW</b>		Approved by Jean-Pierre Rochette
		Drawing scale <b>3/4" = 1' 0"</b>
		File name Standard(E)_2015-05-12_8x10.vsd
Reference I:\W4146\equipement\Roulottes\Standard\		P-2

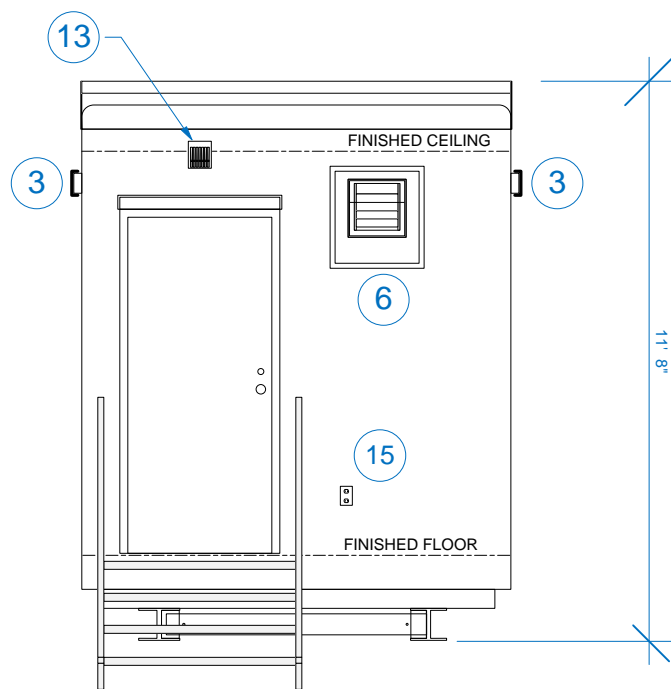
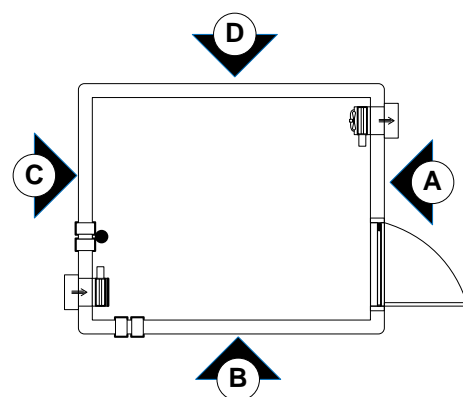




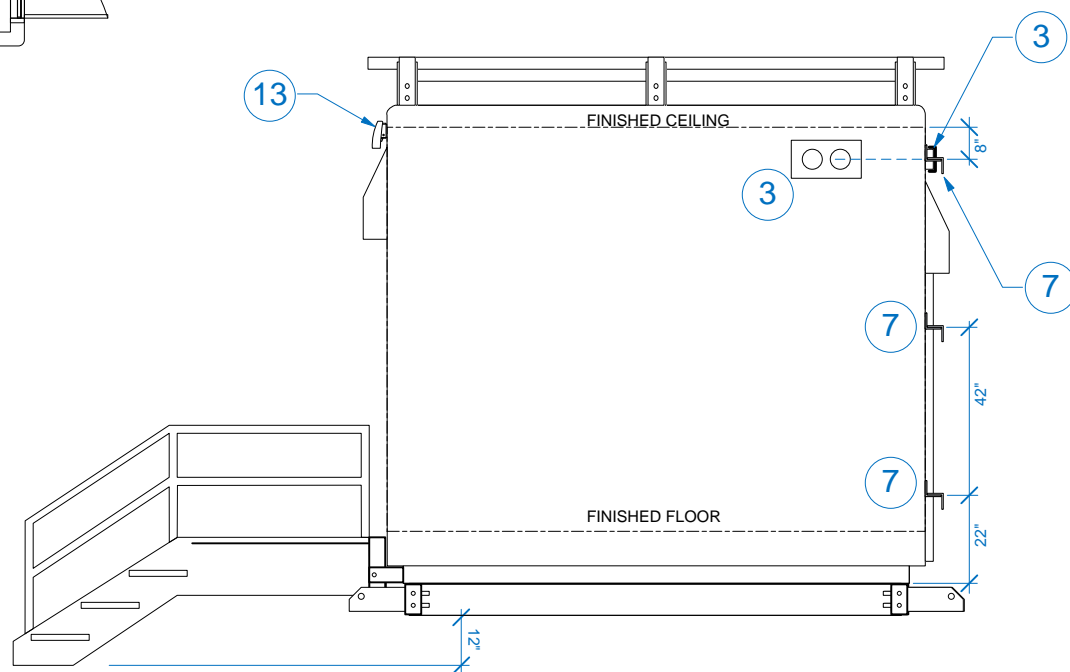
ELEVATION « B »



ELEVATION « C »



ELEVATION « A »

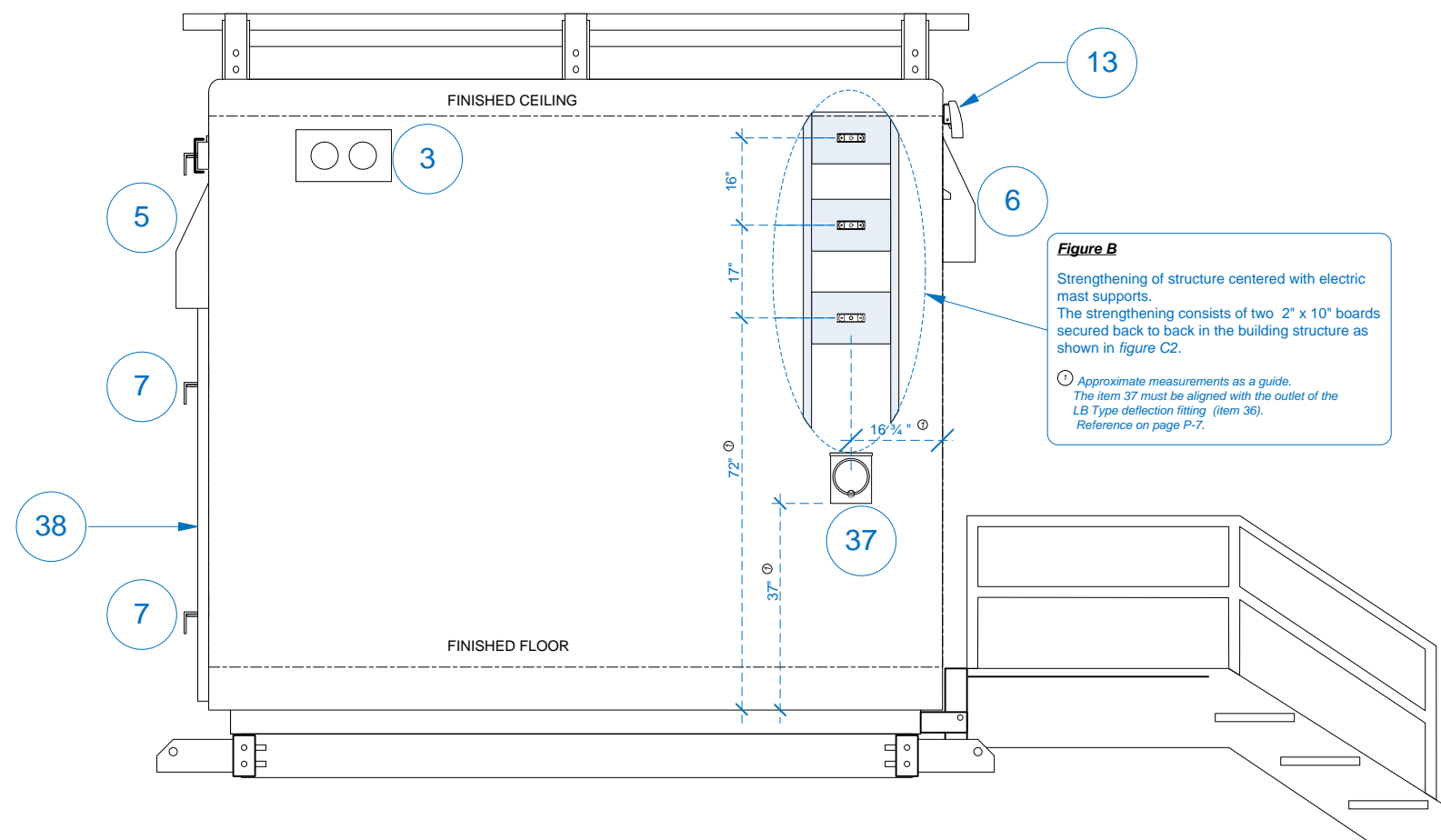
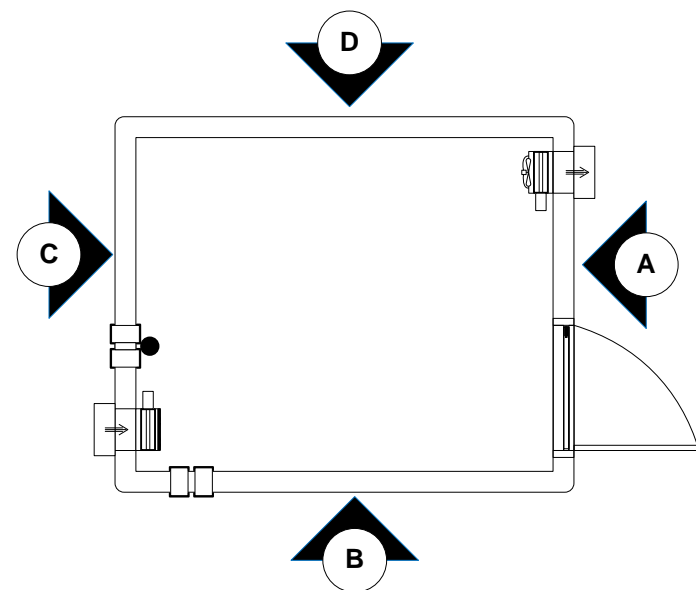


ELEVATION « D »

REFERENCES :

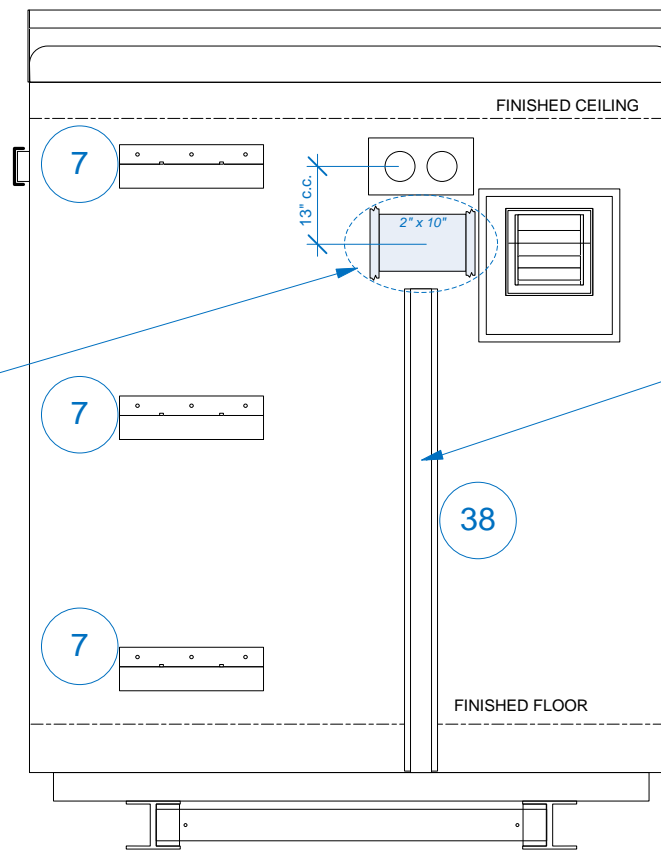
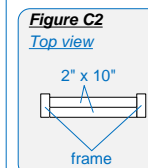
- \* Means that the item must be **provided, but installed** at customer request.  
(see page P-5 for details on this installation).
- ① Approximate measurements as a guide. The item 37 must be aligned with the outlet of the conduit connected to the Type LB rigid conduit (item 36).  
(see page P-5 for details on this installation).

7	REFERENCE CORRECTION	2015-05-12
6	MAJOR UPDATE	2015-05-11
5	UPDATE	2015-02-27
4	ADDITION OF DIMENSIONS	2014-12-10
3	AMENDMENTS	2014-07-15
2	ADD OF « Z » BRACKETS & DIMENSIONS	2014-01-09
1	UPDATE & ADD-INS	2013-12-16
0	ORIGINAL	2013-12-04
ISSUE	REVISION	DATE
Edition <b>2015-2016</b>		
Project <b>8' x 10' STANDARD SHELTERS</b>		
Subject <b>EXTERNAL ELEVATIONS</b>	Drawn by Erick Soucy	
	Approved by Jean-Pierre Rochette	
	Drawing scale <b>1/4" = 1' 0"</b>	
	File name Standard(E)_2015-05-12_8x10.vsd	
Reference I:\W4146\equipement\Roulottes\Standard\		P-4



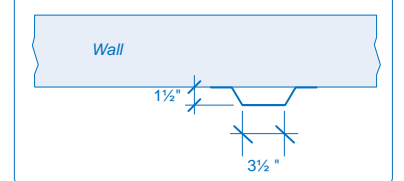
ELEVATION « B »

**Figure C1**  
Strengthening in the wall for anchoring a ground bar

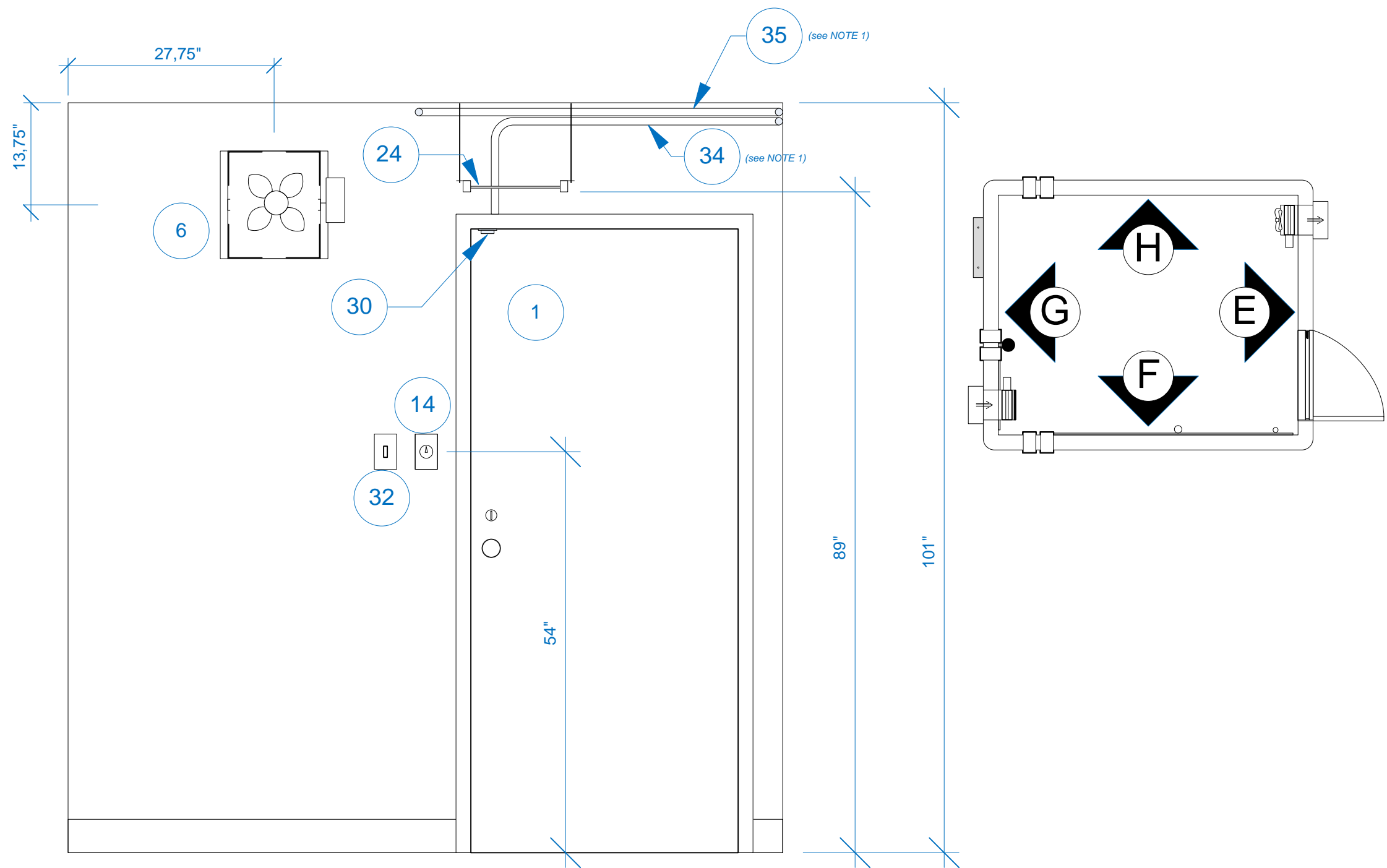


ELEVATION « C »

**Figure D**  
Top view (magnified view of item 38)



1	UPDATE & TRANSLATION TO ENGLISH	2015-05-11
0	ORIGINAL	2015-05-06
ISSUE	REVISION	DATE
Edition		
2015-2016		
Project		
8' x 10' STANDARD SHELTERS		
Quebec Radio Shop		Drawn by
		Erick Soucy
Subject		Approved by
EXTERNAL ELEVATIONS (Sections of walls)		Jean-Pierre Rochette
		Drawing scale
		3/8" = 1' 0"
		File name
		Standard(E)_2015-05-12_8x10.vsd
Reference		P-5
I:\W4146\equipement\Roulottes\Standard\		



# ELEVATION « E »

**NOTE 1 :**

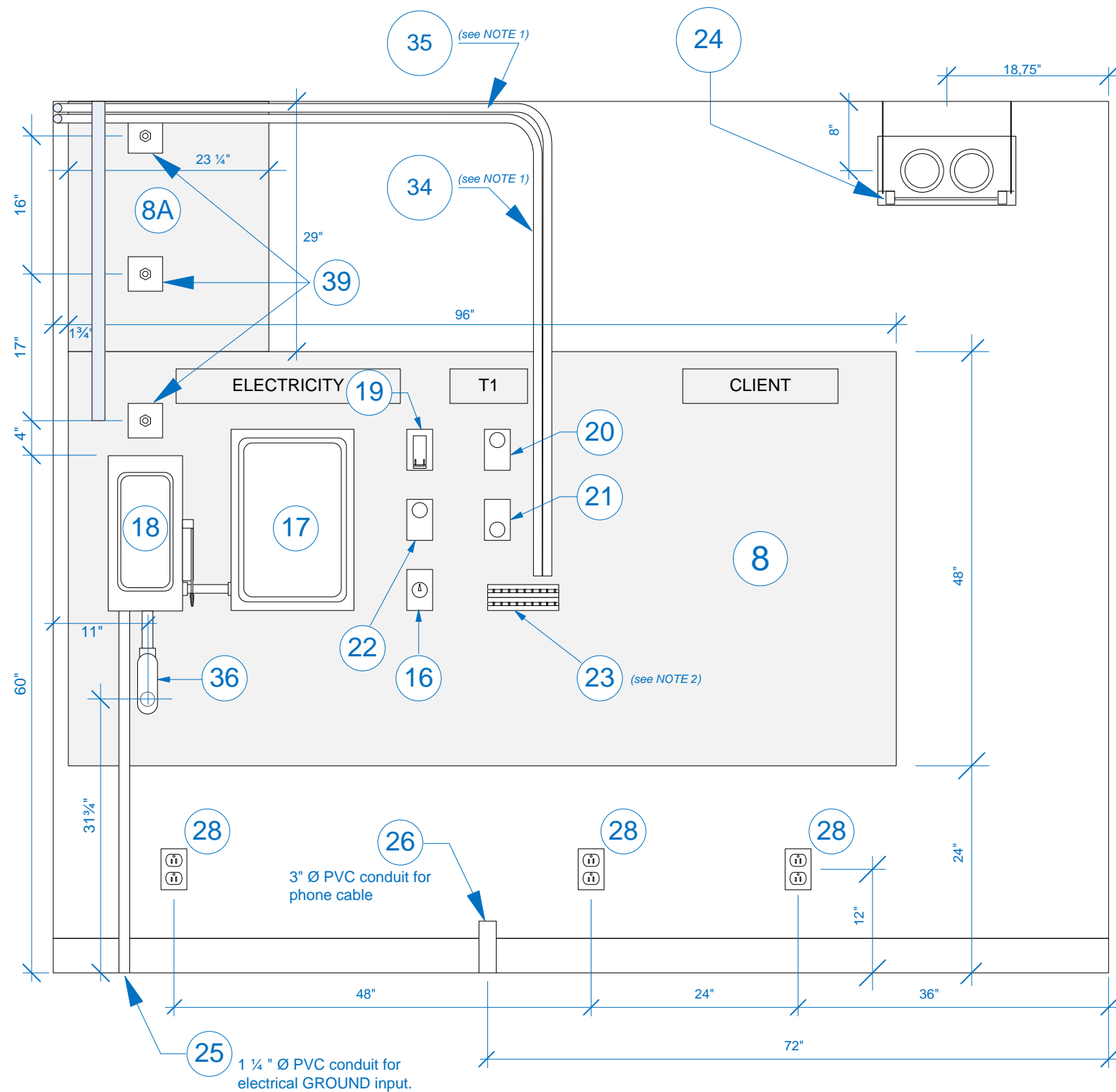
The items **34** et **35** (rigid E.M.T. conduits 1" Ø) are represented as a guide. This representation is a suggestion of their installation.

Only the starting point of item **34** (rigid E.M.T. conduit 1" Ø) above and near the door intrusion sensor and end point above the BIX terminal (*at its indicated location*) are requirements.

Item **35** (rigid E.M.T. conduit 1" Ø) for which the starting point is located near the smoke detector (*item 27: smoke detector « KIDDE » P-1235CA avec relais « KIDDE » SM120X*) and the end point over the BIX terminal (*at its indicated location*) are requirements.

The remaining sections of E.M.T. conduits remains suggestive and subject to common sense at the manufacturer's discretion and thereby, in no case, restrictive, final and/or official representations.

7	MAJOR UPDATE	2015-05-11
6	NOTE CORRECTIONS	2015-03-30
5	UPDATE	2015-02-27
4	ADD-INS & UPDATE	2014-12-15
3	IDENTIF. CORRECTION (#32 = SWITCH)	2014-12-10
2	AMENDMENTS	2014-07-15
1	UPDATES & ADD-INS	2013-12-16
0	ORIGINAL	2013-12-04
ISSUE	REVISION	DATE
Edition		
2015-2016		
Project		
8' x 10' STANDARD SHELTERS		
Quebec Radio Shop		Drawn by
		Erick Soucy
Subject		Approved by
		Jean-Pierre Rochette
		Drawing scale
		3/4" = 1' 0"
		File name
		Standard(E)_2015-05-12_8x10.vsd
Reference		
I:\W4146\equipement\Roulottes\Standard\		P-6



# ELEVATION « F »

## NOTE 1 :

The items **34** et **35** (rigid E.M.T. conduits 1" Ø) are represented as a guide. This representation is a suggestion of their installation.

Only the starting point of item **34** (rigid E.M.T. conduit 1" Ø) above and near the door intrusion sensor and end point above the BIX terminal (at its indicated location) are requirements.

Item **35** (rigid E.M.T. conduit 1" Ø) for which the starting point is located near the smoke detector (item 27: smoke detector « KIDDE » P-1235CA avec relais « KIDDE » SM120X) and the end point over the BIX terminal (at its indicated location) are requirements.

The remaining sections of E.M.T. conduits remains suggestive and subject to common sense at the manufacturer's discretion and thereby, in no case, restrictive, final and/or official representations.

## NOTE 2 :

Connections on item 23 (BIX BELDEN 10C/ 1X REG.) are the following:

Door contact HONEYWELL model 7939-2GY

Pair #1 = Normally Closed (NC) & Common.

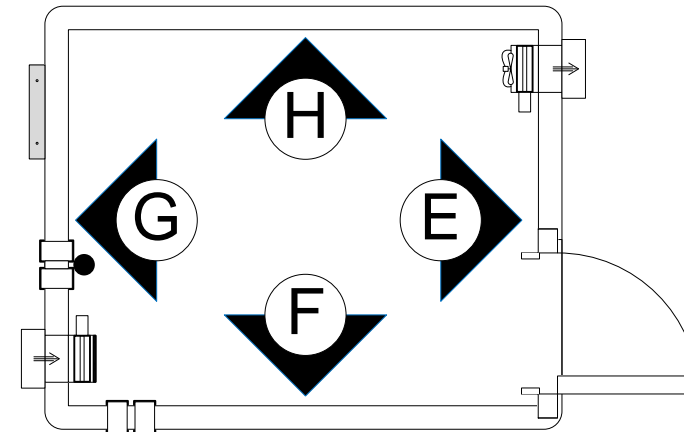
Pair #2 = Normally Open (NO) & Common.

Smoke detector Relay SM120X

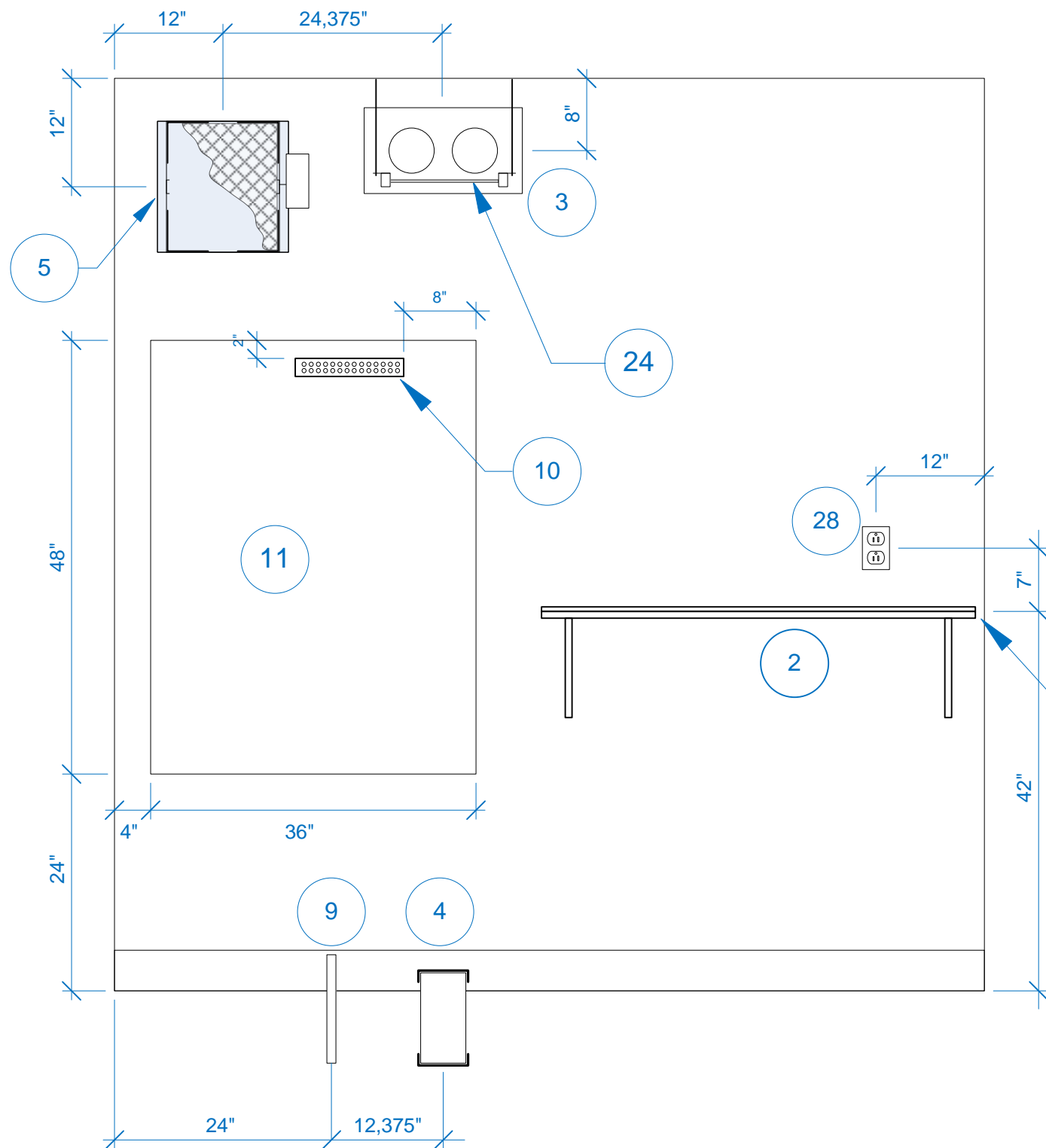
Pair #3 = Yellow (Normally Closed (NC)) & Blue (Common).

Pair #4 = Orange (Normally Open (NO)) & Blue (Common).

Pair #5 = Gray (9 Volts DC output) & Blue (Common)



7	MAJOR UPDATE	2015-05-11
6	ADDITION OF NOTE 2	2015-03-31
5	NOTE CORRECTIONS	2015-03-30
4	UPDATE & ADD-INS	2015-02-27
3	UPDATE & ADD-INS	2014-12-15
2	AMENDMENTS	2014-07-15
1	UPDATE & ADD-INS	2013-12-17
0	ORIGINAL	2013-12-04
ISSUE	REVISION	DATE
Edition	2015-2016	
Project	8' x 10' STANDARD SHELTERS	
Quebec Radio Shop	Drawn by	Erick Soucy
Subject	Approved by	Jean-Pierre Rochette
INTERNAL ELEVATION	Drawing scale	3/4" = 1' 0"
	File name	Standard(E)_2015-05-12_8x10.vsd
Reference	I:\W4146\equipement\Roulottes\Standard\	P-7

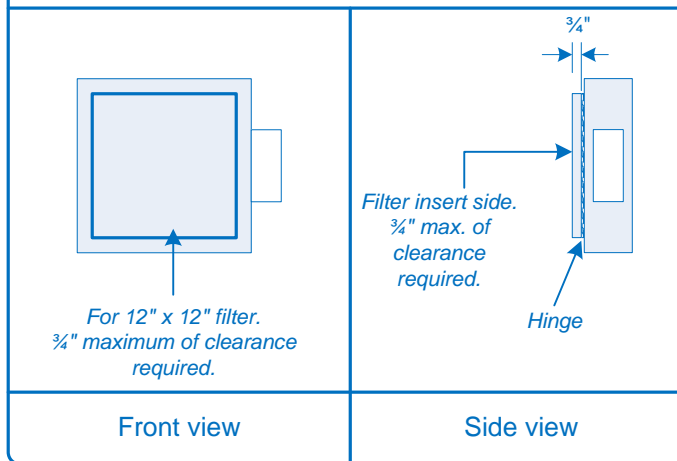


# ELEVATION « G »

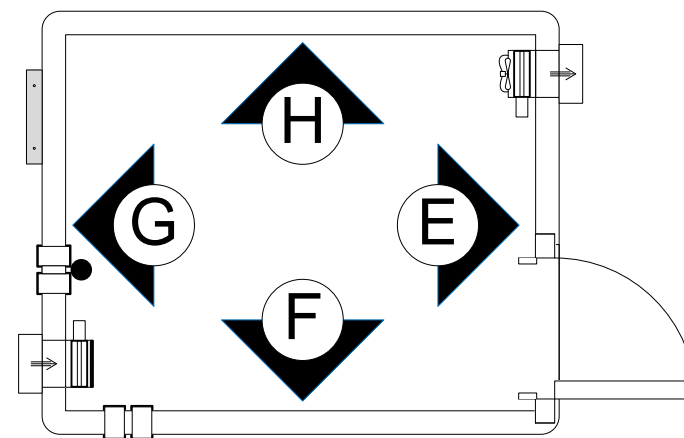
**Figure E**

**Detailed view of item #5:**

Air inlet damper 12"x12" (« TAMCO » series 9000 with a « BÉLIMO » Motor) to fit a 12"x12"x3/4" thin filter. A fiberglass mosquitos screened cap. A bird screen grid and an anti-burst tablet.

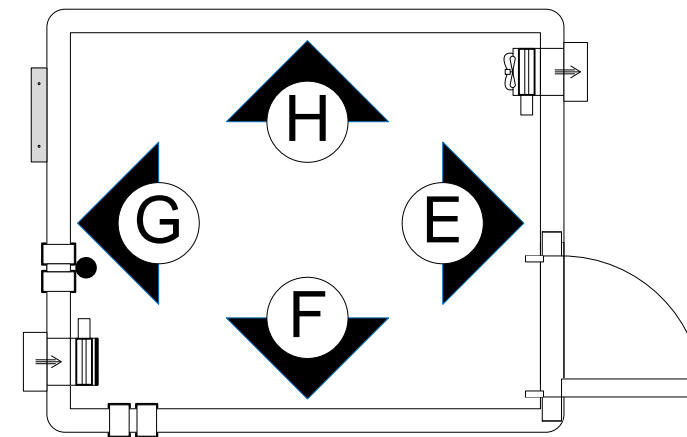
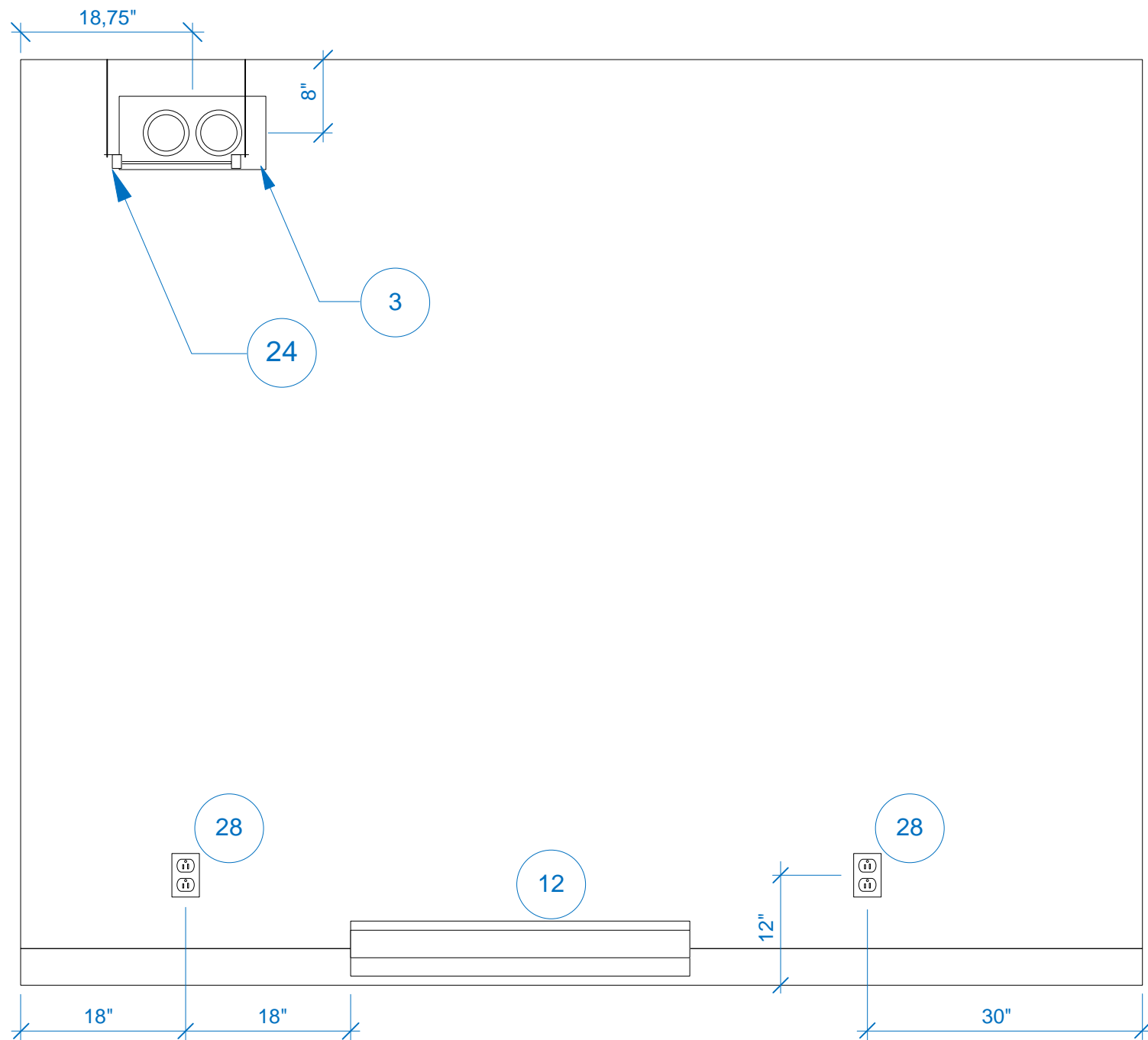


Spacing of 1" from finished wall



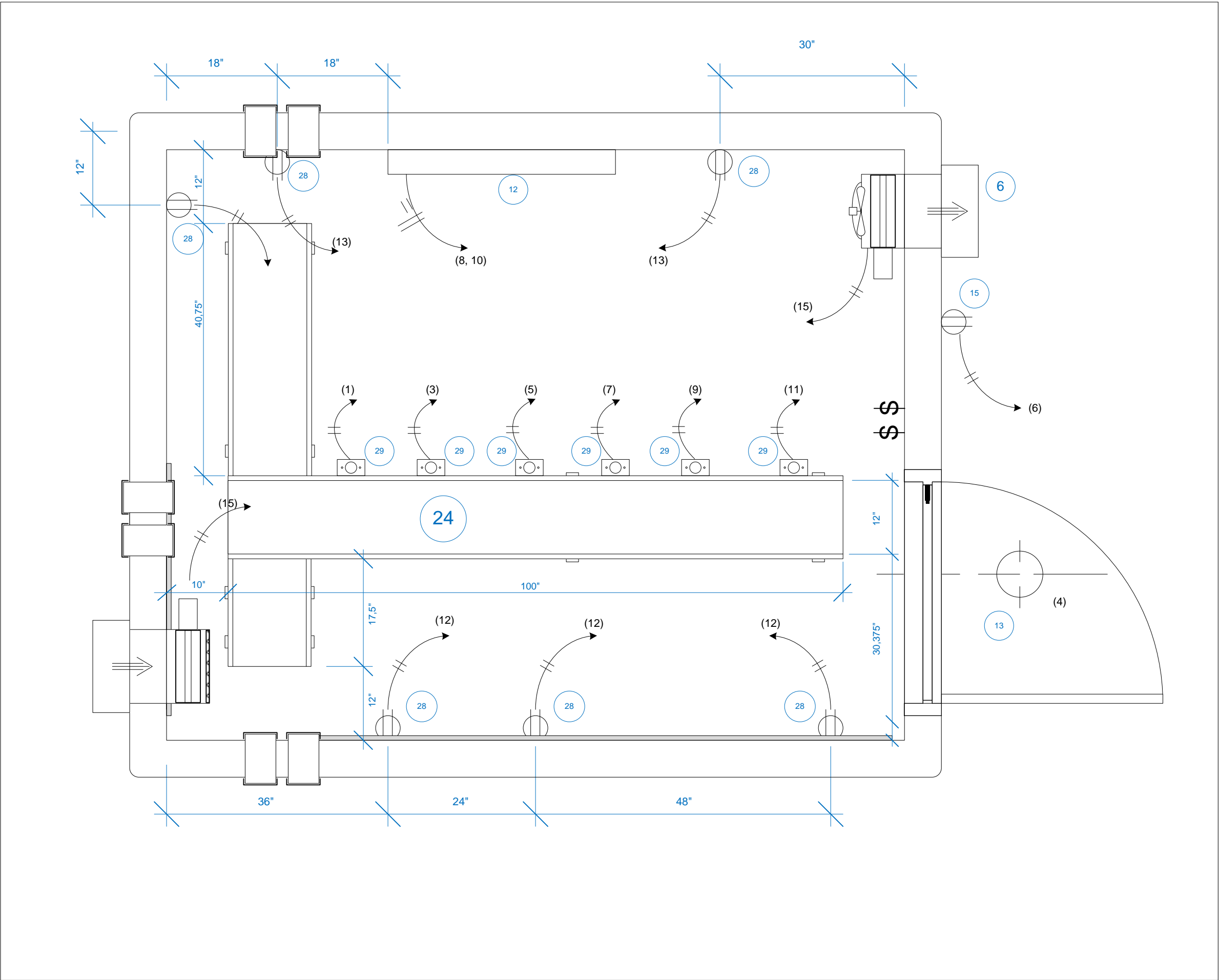
6	MAJOR UPDATE	2015-05-11
5	CORRECTIONS, UPDATE & ADD-INS	2015-03-30
4	UPDATE	2015-02-27
3	UPDATE & ADD-INS	2014-12-15
2	AMENDMENTS	2014-07-16
1	UPDATE & ADD-INS	2013-12-16
0	ORIGINAL	2013-12-04
ISSUE	REVISION	DATE
Edition	<b>2015-2016</b>	
Project	<b>8' x 10' STANDARD SHELTERS</b>	
Subject	Quebec Radio Shop	Drawn by Erick Soucy
<b>INTERNAL ELEVATION</b>	Approved by Jean-Pierre Rochette	
	Drawing scale	3/4" = 1' 0"
	File name	Standard(E)_2015-05-12_8x10.vsd
Reference	I:\W4146\equipement\Roulottes\Standard\	P-8





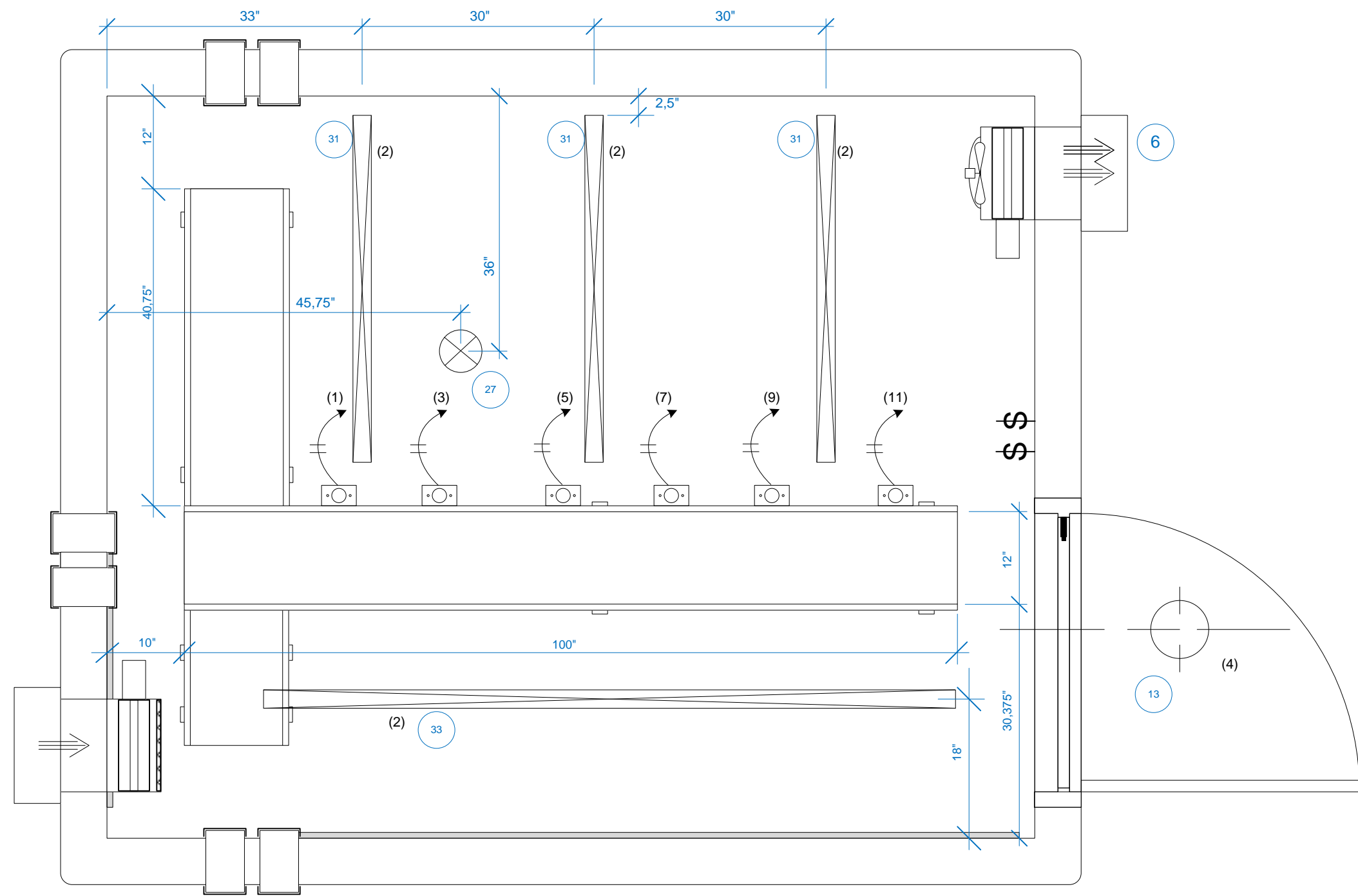
# ELEVATION « H »

6	MAJOR UPDATE	2015-05-11
5	CORRECTIONS, UPDATE & ADD-INS	2015-03-30
4	UPDATE	2015-02-27
3	UPDATE & ADD-INS	2014-12-15
2	AMENDMENTS	2014-07-16
1	UPDATE & ADD-INS	2013-12-16
0	ORIGINAL	2013-12-04
ISSUE	REVISION	DATE
Edition		
2015-2016		
Project		
8' x 10' STANDARD SHELTERS		
Quebec Radio Shop		Drawn by
		Erick Soucy
Subject		Approved by
		Jean-Pierre Rochette
		Drawing scale
		3/4" = 1' 0
		File name
		Standard(E)_2015-05-12_8x10.vsd
Reference		P-9
I:\W4146\equipement\Roulottes\Standard\		



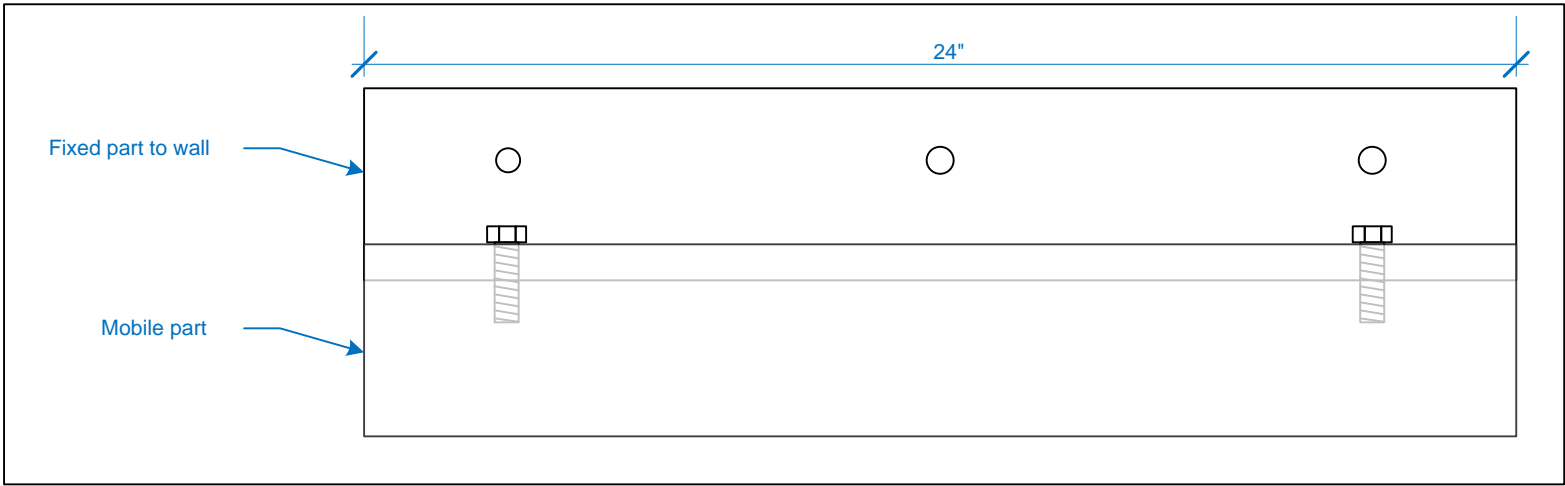
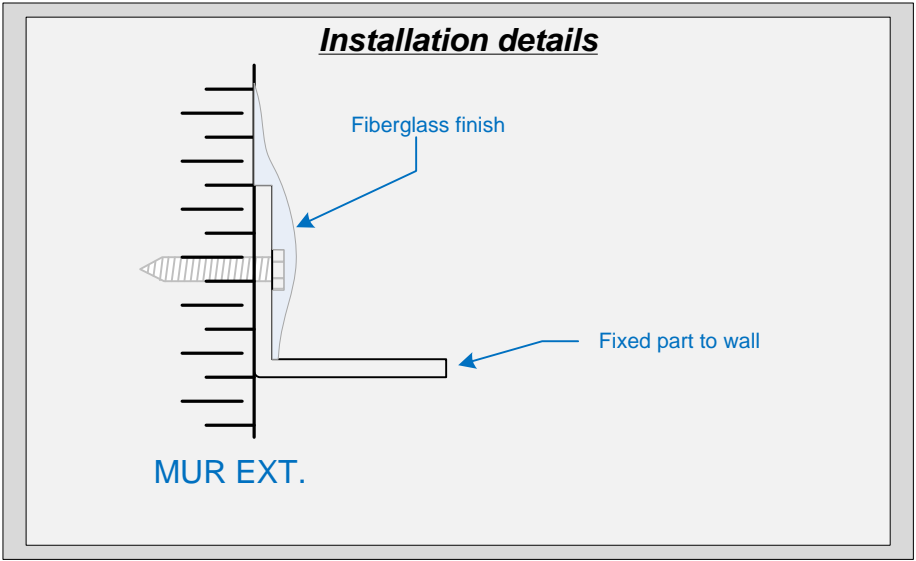
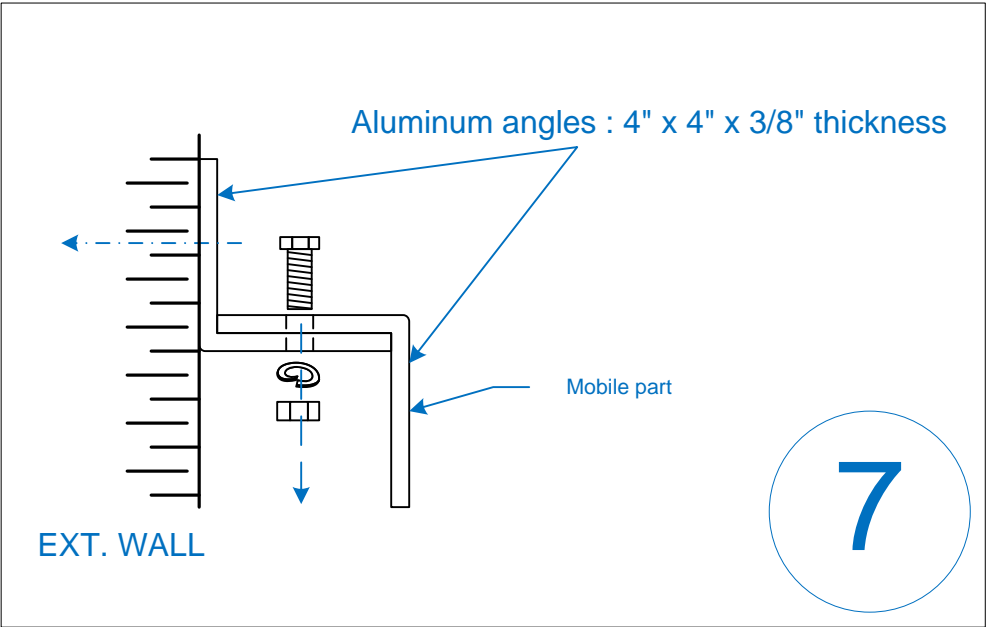
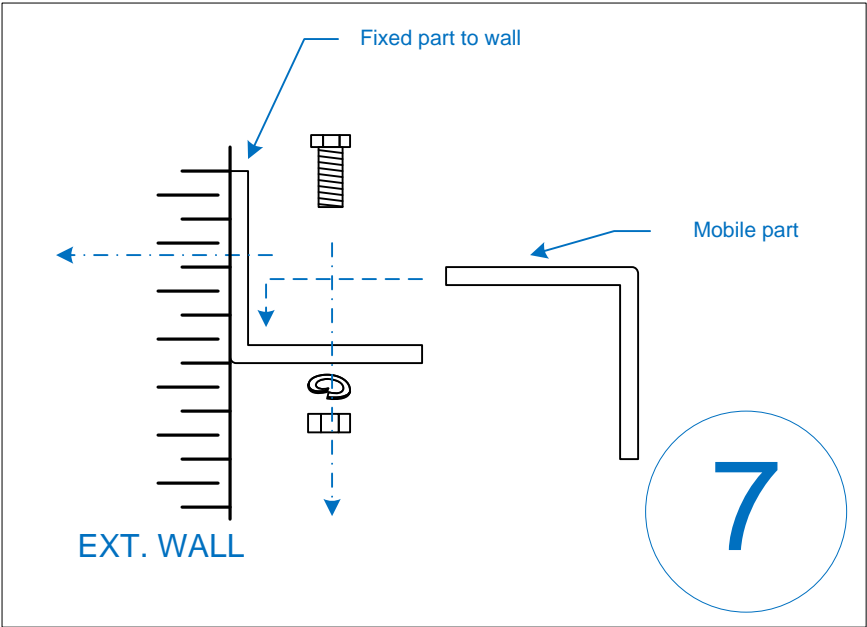
DISTRIBUTION PANEL				
SQUARE D «PANEL»				
DETAILS	CIRCUIT #		CIRCUIT #	DETAILS
CEILING TWIST LOCK	1		2	INDOOR LIGHTING
CEILING TWIST LOCK	3		4	OUTDOOR LIGHTING
CEILING TWIST LOCK	5		6	GFI OUTDOOR OUTLETS
CEILING TWIST LOCK	7		8	HEATING
CEILING TWIST LOCK	9		10	HEATING
CEILING TWIST LOCK	11		12	LEFT WALLMNT OUTLETS
RIGHT WALLMNT OUTLETS	13		14	SMOKE DETECTOR
VENTILATING	15		16	AVAILABLE
SHELF OUTLETS	17		18	AVAILABLE
AVAILABLE	19		20	AVAILABLE
AVAILABLE	21		22	AVAILABLE
AVAILABLE	23		24	AVAILABLE
AVAILABLE	25		26	AVAILABLE
AVAILABLE	27		28	AVAILABLE
AVAILABLE	29		30	AVAILABLE
AVAILABLE	31		32	AVAILABLE

4	MAJOR UPDATE	2015-05-11
3	UPDATE	2015-02-27
2	AMENDMENTS	2014-07-15
1	ADDING ELEMENTS OF IDENTIFICATION	2013-12-19
0	ORIGINAL	2013-12-04
ISSUE	REVISION	DATE
Edition	2015-2016	
Project	8' x 10' STANDARD SHELTERS	
Quebec Radio Shop	Drawn by	Erick Soucy
Subject	Approved by	Jean-Pierre Rochette
	Drawing scale	3/4" = 1' 0"
	File name	Standard(E)_2015-05-12_8x10.vsd
Reference	I:\W4146\equipement\Roulottes\Standard\	P-10



DISTRIBUTION PANEL				
SQUARE D «PANEL»				
DETAILS	CIRCUIT #		CIRCUIT #	DETAILS
CEILING TWIST LOCK	1		2	INDOOR LIGHTING
CEILING TWIST LOCK	3		4	OUTDOOR LIGHTING
CEILING TWIST LOCK	5		6	GFI OUTDOOR OUTLETS
CEILING TWIST LOCK	7		8	HEATING
CEILING TWIST LOCK	9		10	HEATING
CEILING TWIST LOCK	11		12	LEFT WALLMNT OUTLETS
RIGHT WALLMNT OUTLETS	13		14	SMOKE DETECTOR
VENTILATING	15		16	AVAILABLE
SHELF OUTLETS	17		18	AVAILABLE
AVAILABLE	19		20	AVAILABLE
AVAILABLE	21		22	AVAILABLE
AVAILABLE	23		24	AVAILABLE
AVAILABLE	25		26	AVAILABLE
AVAILABLE	27		28	AVAILABLE
AVAILABLE	29		30	AVAILABLE
AVAILABLE	31		32	AVAILABLE

6	MAJOR UPDATE	2015-05-11
5	UPDATE	2015-02-27
4	UPDATE	2014-12-15
3	LIGHTING MODIFICATIONS	2014-07-18
2	AMENDMENTS	2014-07-16
1	ADD-INS & MODIFICATIONS	2014-01-10
0	ORIGINAL	2013-12-17
ISSUE	REVISION	DATE
Edition	2015-2016	
Project	8' x 10' STANDARD SHELTERS	
Quebec Radio Shop	Drawn by	Erick Soucy
Subject	Approved by	Jean-Pierre Rochette
	Drawing scale	3/4" = 1' 0"
	File name	Standard(E)_2015-05-12_8x10.vsd
Reference	I:\W4146\equipement\Roulottes\Standard\	P-11



3	MAJOR UPDATE	2015-05-11
2	GENERAL UPDATE	2015-02-27
1	AMENDMENTS	2014-07-16
0	ORIGINAL	2013-12-04
ISSUE	REVISION	DATE
Edition	2015-2016	
Project	8' x 10' STANDARD SHELTERS	
Subject	Quebec Radio Shop	Drawn by Erick Soucy
	« Z » BRACKETS MOUNTING	Approved by Jean-Pierre Rochette
		Drawing scale 1/4 : 1
		File name Standard(E)_2015-05-12_8x10.vsd
Reference	I:\W4146\equipement\Roulottes\Standard\	P-12