

The following revisions and clarifications to the tender documents are effective immediately. This addendum will form part of the contract documents.

Drawing S100:

1. Notes have been updated to reference 2012 OBC & 2010 NBC.
2. Notes have been updated to clarify that shop drawings are to bear the stamp of an engineer licensed in the Territory of Nunavut.
3. Notes for steel deck fastening have been updated.
4. The snow shed framing shown in plan and section has been changed from all structural steel to steel studs bearing on steel beams. The steel stud framing is to be designed by the contractor's forces and stamped by a structural engineer licensed in the Territory of Nunavut.

Drawing S200:

1. Section 1 and Section 3 from the original drawings have been deleted. Section 2 has been renamed Section 1 and has been modified to show the steel stud framing to be designed by the contractor's forces.

END OF STRUCTURAL ADDENDUM #S1 (Addendum #1)

NOTE: REFER TO ARCHITECTURAL AND MECH. DWGS FOR ROOFING, SIDING & LOUVER DETAILS

The Contractor shall check and verify all dimensions on site. All dimensions shall be in millimeters unless otherwise indicated. Do not scale drawings. Copyright reserved. This drawing is the exclusive property of Cleland Jardine Engineering Ltd.

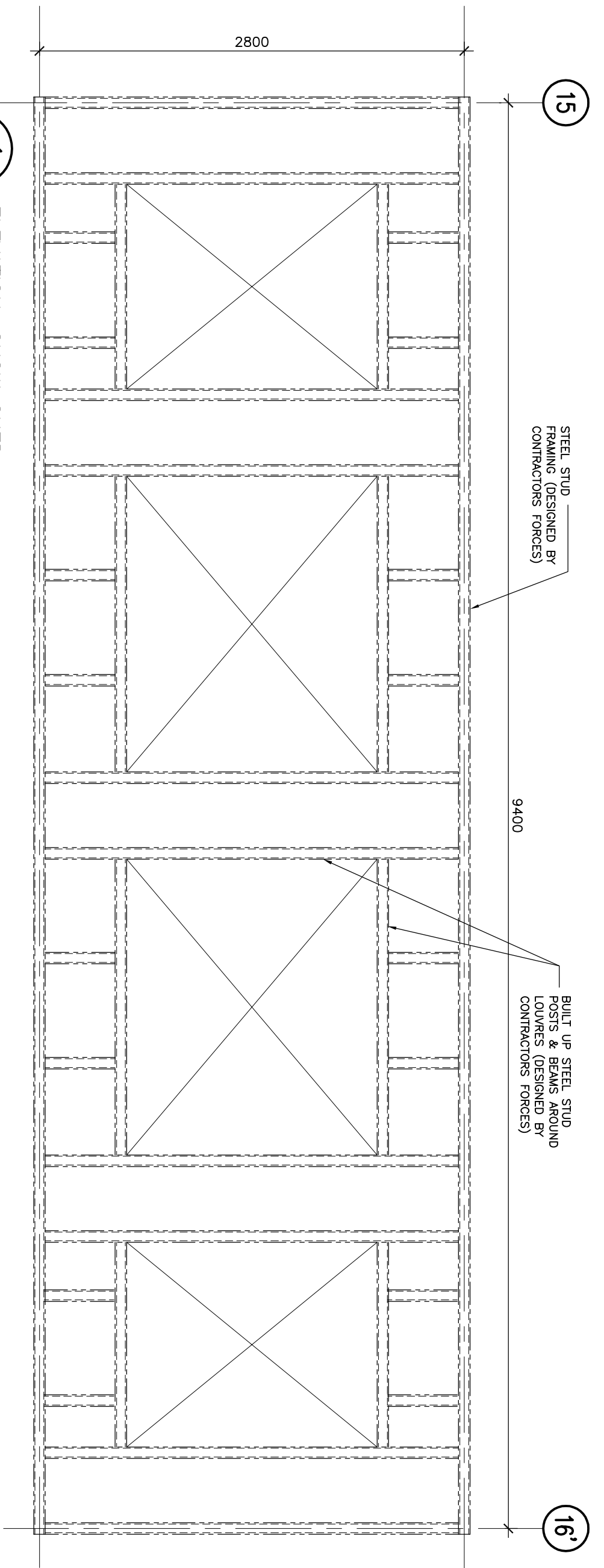
No.	DATE	REVISIONS	BY
6	JULY 16/13	ISSUED FOR ADDENDUM #2	ME
5	JUNE 10/13	RE-ISSUED FOR TENDER	ME
4	MAR 28/14	ISSUED FOR TENDER	ME
3	JAN 07/14	ISSUED FOR FINAL REVIEW	ME
2	DEC 09/13	ISSUED FOR 90% REVIEW	ME
1	NOV 19/13	ISSUED FOR REVIEW	ME

CLELAND JARDINE ENGINEERING LIMITED
 580 TERRY FOX DRIVE, SUITE 200
 KANATA, ONTARIO, K2L 4B9
 TEL: 613-896-1520 FAX: 613-891-1103
 WWW.CLELANDJARDINE.COM
 C.E.M. 132284

PROJECT
IQALUIT RCMP BUILDING MECHANICAL SNOW SHED

DRAWING
SECTIONS & ELEVATIONS

DRAWN: M.E.	DRAWING No.
DESIGNED: C.F.	S200
DATE: NOV 18/2013	
SCALE: AS INDICATED	
PROJECT No. 1004305	



1
 ELEVATION: SNOW SHED
 SCALE: 1:30
 S200