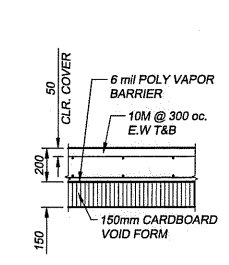


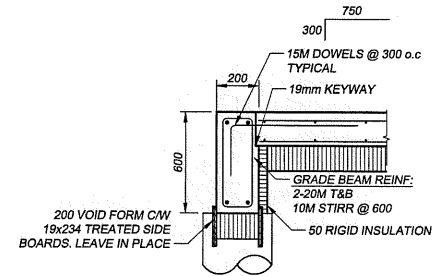
1 FOUNDATION PLAN  
S1.1|S1.1 1:20

DESIGN LOADS:

SNOW	1.7 kPa
ROOF	0.72 kPa
FLOOR LIVE	7.2 kPa
FLOOR DEAD	3.6 kPa

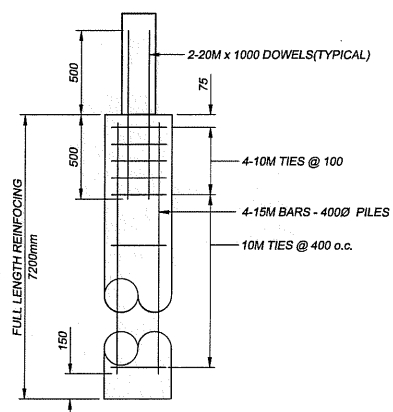


3 TYPICAL STRUCTURAL SLAB  
S1.1|S1.1 1:20

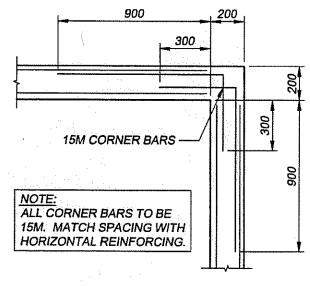


4 TYPICAL GRADE BEAM  
S1.1|S1.1 1:20

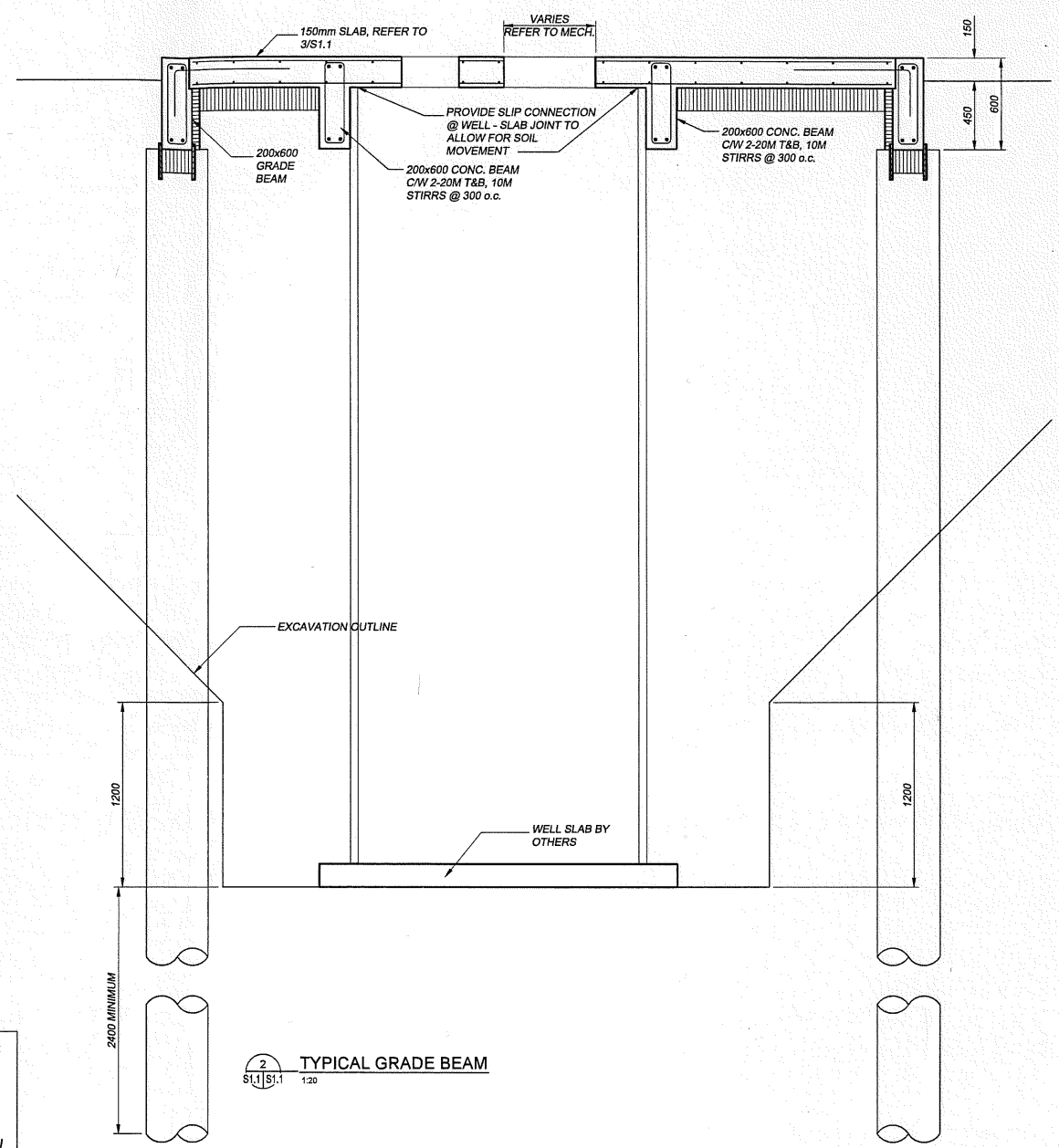
**NOTES:**  
 -CONTRACTOR TO CONFIRM BUILDING ANCHORING REQUIREMENTS WITH MANUFACTURER PRIOR TO POUR & SET ANCHORS AS REQUIRED  
 -CONTRACTOR TO CONFIRM FOUNDATION SIZE WITH BUILDING SUPPLIER PRIOR TO CONSTRUCTION  
 -REFER TO MECHANICAL SITE PLAN FOR LOCATION AND BUILDING ELEVATION



5 TYPICAL FRICTION PILE  
S1.1|S1.1 1:20



6 TYP. CORNER REINF.  
S1.1|S1.1 1:20



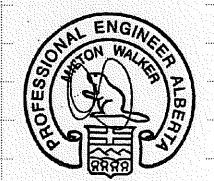
2 TYPICAL GRADE BEAM  
S1.1|S1.1 1:20

Mechanical design group  
 100 - 2330 15th Avenue, Regina, SK Canada S4P 1A2  
 phone : (306) 777-0123  
 fax : (306) 525-6700

Project Contact: JOHN YANNITSOS

**WALKER PROJECTS**  
 Consulting Engineers - Project Managers

109 - 1621 Albert Street, Regina, Saskatchewan S4P 2S5  
 Telephone (306) 522-8434 Fax (306) 522-8431  
 www.walkerprojects.com



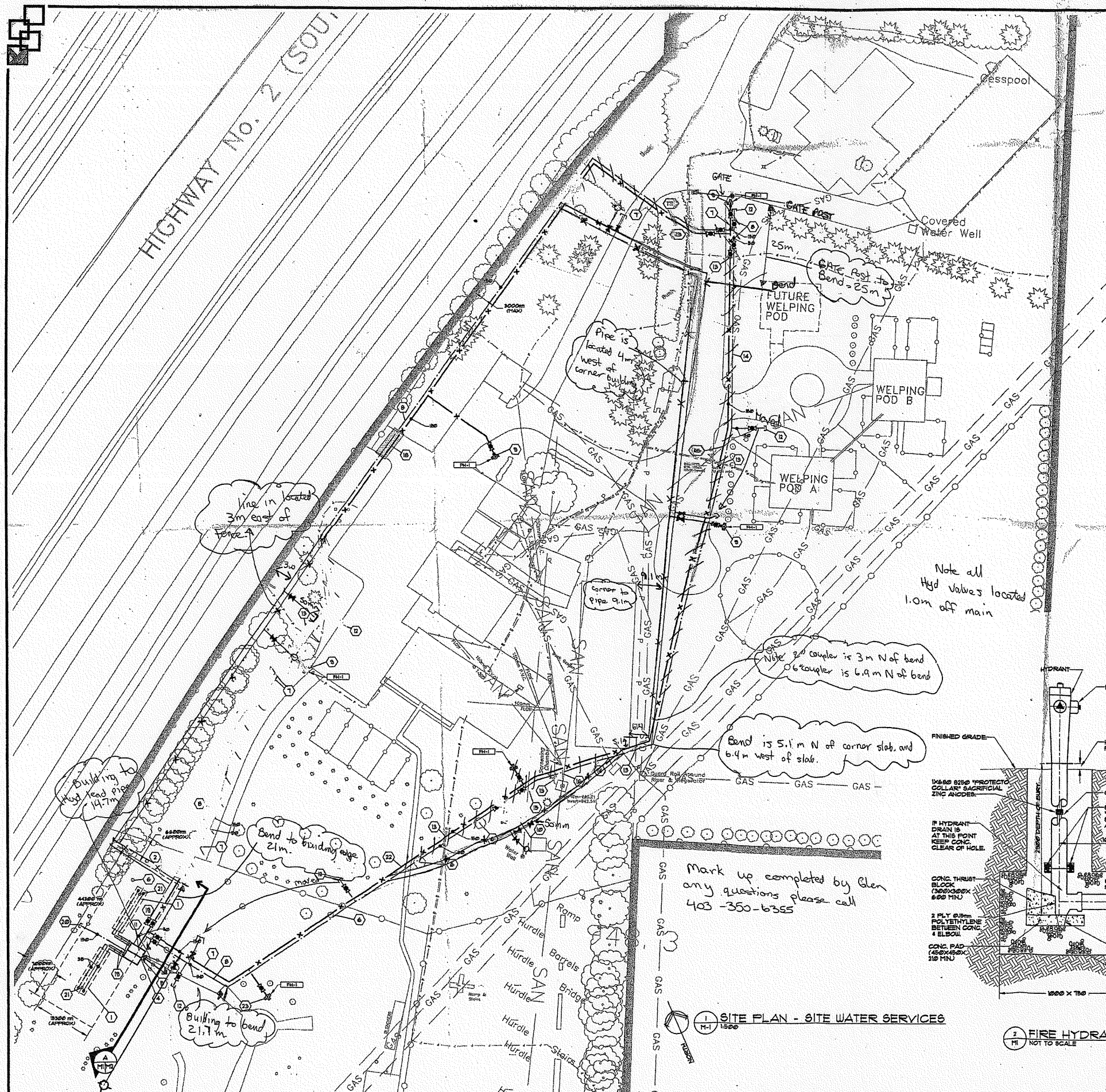
Revisions: 0  
 Revisions: No.  
 Date: 04/02/2013  
 By: DKW  
 Description: ISSUED FOR TENDER

Client:  
 GOVERNMENT OF CANADA

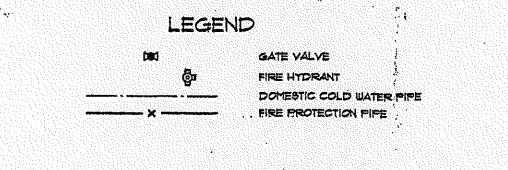
SITE FIRE PROTECTION  
 RETROFIT  
 Innisfail, Alberta

STRUCTURAL

File : 11054	Drawing Number:
Date : 2013/04/02	S1.1
Scale : AS NOTED	
Drawn : DKW	
Checked : DMA	Rev. 0 Dwg 1 of 1



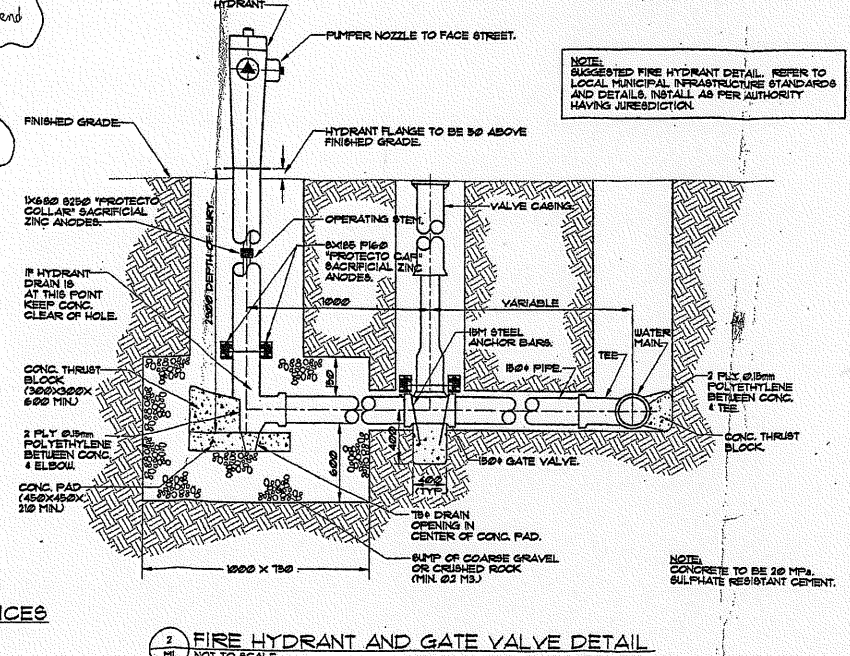
- ### NOTE LEGEND
- 1 TYPICAL OF TWO (2) WATER STORAGE TANKS. INSTALL BELOW GRADE AS PER MANUFACTURERS INSTRUCTIONS AND AS PER 1/2 FOR DETAILS.
  - 2 DASHED LINE DENOTES APPROXIMATE EXTENTS OF SLOPED BERM OVER NEW WATER TANKS. CONFIRM EXACT LOCATION AND ELEVATIONS ON SITE.
  - 3 NEW PUMP HOUSE. REFER TO 1/2 FOR DETAILS.
  - 4 PROVIDE CONCRETE LANDINGS IN FRONT OF ACCESS DOOR OF NEW PUMP HOUSE.
  - 5 NEW GRANULAR ACCESS PATH TO NEW PUMP HOUSE. REFER TO 1/2 FOR DETAILS.
  - 6 TRANSPLANT/RELOCATE EXISTING TREES/BUSHES TO ALLOW FOR INSTALLATION OF NEW WATER TANKS OR PIPING. CONFIRM EXACT LOCATION WITH GOVERNMENT OF CANADA REPRESENTATIVE ON SITE PRIOR TO START OF CONSTRUCTION.
  - 7 NEW 150mm FIRE PROTECTION SUPPLY MAIN LOCATED BELOW GRADE. PROVIDE A MINIMUM OF 225mm OF COVER. REFER TO SPECIFICATIONS FOR PIPE AND INSTALLATION DETAILS.
  - 8 NEW DOMESTIC WATER SUPPLY MAIN LOCATED BELOW GRADE. PROVIDE A MINIMUM OF 300mm OF COVER. REFER TO SPECIFICATIONS FOR PIPE AND INSTALLATION DETAILS. SIZE AS NOTED.
  - 9 NEW FIRE HYDRANT AS SPECIFIED. CONFIRM EXACT LOCATION ON SITE PRIOR TO CONSTRUCTION. INSTALL AS PER TOWN OF INDIANAFIELD INFRASTRUCTURE STANDARDS AND AS PER AUTHORITY HAVING JURISDICTION.
  - 10 EXTEND NEW 50mm DOMESTIC WATER PIPE FROM EXISTING WATER FILTRATION SYSTEM LOCATED IN EXISTING WATER FILTRATION SHED. CONFIRM EXACT LOCATION AND ROUTING OF PIPE ON SITE.
  - 11 EXTEND NEW FIRE PROTECTION SYSTEM SUPPLY MAIN AND NEW DOMESTIC WATER SUPPLY MAIN PIPE INTO NEW PUMP HOUSE. REFER TO 1/2 FOR CONTINUATION.
  - 12 PROVIDE NEW CAPPED 50mm DOMESTIC WATER MAIN CONNECTION CAJ ISOLATION VALVE FOR FUTURE USE. CONFIRM EXACT LOCATION ON SITE.
  - 13 APPROXIMATE LOCATION WHERE HAND EXCAVATION OF EXISTING ELECTRICAL SERVICE CABLING IS REQUIRED PRIOR TO INSTALLATION OF NEW PIPING.
  - 14 APPROXIMATE LOCATION WHERE HAND EXCAVATION OF EXISTING GAS SERVICE PIPING IS REQUIRED PRIOR TO INSTALLATION OF NEW PIPING.
  - 15 APPROXIMATE LOCATION WHERE HAND EXCAVATION OF EXISTING WATER SERVICE PIPING IS REQUIRED PRIOR TO INSTALLATION OF NEW PIPING.
  - 16 APPROXIMATE LOCATION WHERE HAND EXCAVATION OF EXISTING SANITARY SERVICE PIPING IS REQUIRED PRIOR TO INSTALLATION OF NEW PIPING.
  - 17 CUT AND REMOVE EXISTING TREES AND BUSHES TO ALLOW FOR INSTALLATION OF NEW PIPING. CONFIRM EXACT LOCATION AND ROUTING OF PIPING PRIOR TO CUTTING OF ANY TREES.
  - 18 HATCHING DENOTES WHERE EXISTING ASPHALT PARKING SURFACE IS TO BE SAID CUT TO ALLOW NEW PIPING TO BE INSTALLED. PATCH AND REPAIR EXISTING PARKING GRANULAR BASE AND BRING TO EXISTING FINISHED GRADE.
  - 19 38mm VENT, 50mm RIGID, AND 150mm MAIN WATER SUPPLY PIPES FROM NEW STORAGE TANKS TO NEW PUMP HOUSE. PIPES LOCATED BELOW GRADE REFER TO 1/2 FOR CONTINUATION. INSULATE PIPES WITH LESS THAN 150mm OF COVER AS PER SPECIFICATIONS.
  - 20 CAPPED 150mm INCORPORATING WATER SERVICE FOR FUTURE CONNECTION. EXTEND PIPE INTO NEW PUMP HOUSE. REFER TO 1/2 FOR CONTINUATION.
  - 21 NEW WATER STORAGE TANK ACCESS COVER CAJ LOCK. REFER TO 5/2 FOR DETAILS.



Note all Hyd Valves located 1.0m off main

Bend is 5.1m N of corner slab, and 6.4m west of slab.

Mark up completed by Glen any questions please call 403-350-6355



1 SITE PLAN - SITE WATER SERVICES 1:500

2 FIRE HYDRANT AND GATE VALVE DETAIL NOT TO SCALE

PERMIT TO PRACTICE  
REGINA MECHANICAL DESIGN GROUP  
Signature: *J. Yantisos*  
Date: 2013-03-27  
PERMIT NUMBER: P 10812  
The Association of Professional Engineers, Geologists and Geophysicists of Alberta

PROFESSIONAL ENGINEER ALBERTA

Mechanical design group  
100-2330 15th Avenue, Regina, SK Canada S4P 1A2  
phone: (306) 777-0123  
fax: (306) 525-6700

Project Contact: JOHN YANTISOS

Contractor  
As Built  
dwg's

Client:  
GOVERNMENT OF CANADA

SITE FIRE PROTECTION RETROFIT  
Innisfail, Alberta

SITE PLAN - SITE WATER SERVICES

File: 12-0251  
Date: 2013-03-26  
Scale: AS NOTED  
Drawn: J.Y.  
Checked: T.H.

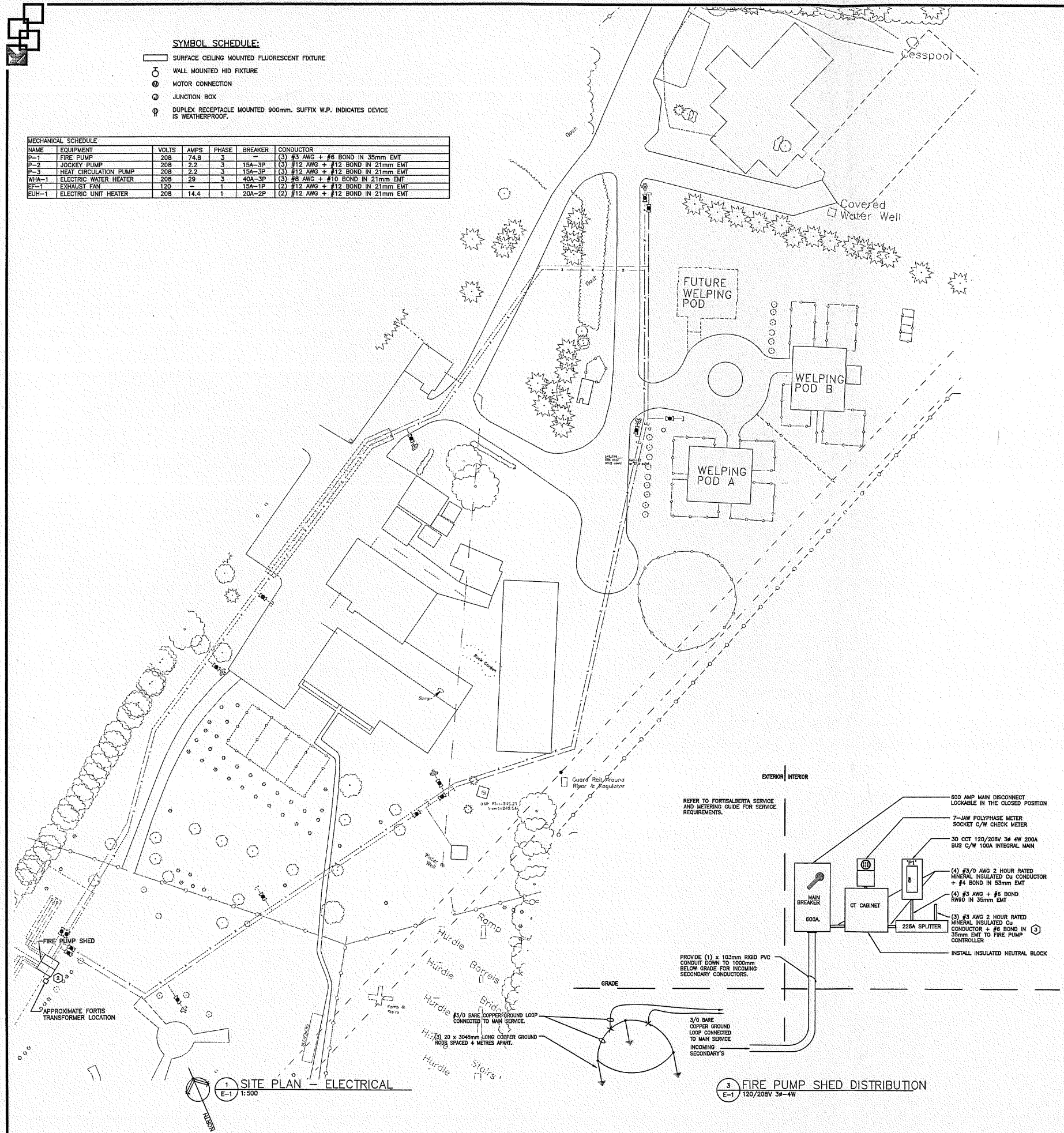
Drawing Number:  
M1  
Rev: 1 of 2

Revisions: No. 1 Date: 2013/03/26 By: J.Y. Description: ISSUES FOR TENDER

**SYMBOL SCHEDULE:**

- SURFACE CEILING MOUNTED FLUORESCENT FIXTURE
- WALL MOUNTED HID FIXTURE
- ⊙ MOTOR CONNECTION
- ⊕ JUNCTION BOX
- ⊕ DUPLEX RECEPTACLE MOUNTED 900mm. SUFFIX W.P. INDICATES DEVICE IS WEATHERPROOF.

NAME	EQUIPMENT	VOLTS	AMPS	PHASE	BREAKER	CONDUCTOR
P-1	FIRE PUMP	208	74.8	3		(3) #3 AWG + #6 BOND IN 35mm EMT
P-2	JOCKEY PUMP	208	2.2	3	15A-3P	(3) #12 AWG + #12 BOND IN 21mm EMT
P-3	HEAT CIRCULATION PUMP	208	2.2	3	15A-3P	(3) #12 AWG + #12 BOND IN 21mm EMT
WHA-1	ELECTRIC WATER HEATER	208	29	3	40A-3P	(3) #8 AWG + #10 BOND IN 21mm EMT
EF-1	EXHAUST FAN	120	-	1	15A-1P	(2) #12 AWG + #12 BOND IN 21mm EMT
EUH-1	ELECTRIC UNIT HEATER	208	14.4	1	20A-2P	(2) #12 AWG + #12 BOND IN 21mm EMT



**DRAWING NOTES:**

- 1 PROVIDE NEW 600 AMP MAIN DISCONNECT LOCKABLE IN THE CLOSED POSITION, C/T, METER, SPLITTER AND PANEL AS SHOWN ON DETAIL 3/E1 IN FIRE PUMP SHED.
- 2 PROVIDE (4) #3/0 RW90 + #6 BOND FROM FORTIS TRANSFORMER LOCATION TO 600 AMP MAIN DISCONNECT IN FIRE PUMP SHED.
- 3 PROVIDE (3) #3 AWG 2 HOUR RATED MINERAL INSULATED CONDUCTOR + #6 BOND IN 35mm EMT FROM 225A SPLITTER TO FIRE PUMP CONTROLLER, AND FROM CONTROLLER TO FIRE PUMP P-1. SEE FIRE PUMP CONTROLLER MANUAL FOR INSTALLATION INSTRUCTIONS.

**FIXTURE SCHEDULE:**

**TYPE A:** WALL MOUNTED EXTERIOR FIXTURE, 120 VOLT, 175 WATT METAL HALIDE LAMP, ELECTRONIC BALLAST, MOUNT UP 2440mm.  
**COOPER 'LUMARK' #MHW-FC-175-120V-E**  
 OR APPROVED EQUAL

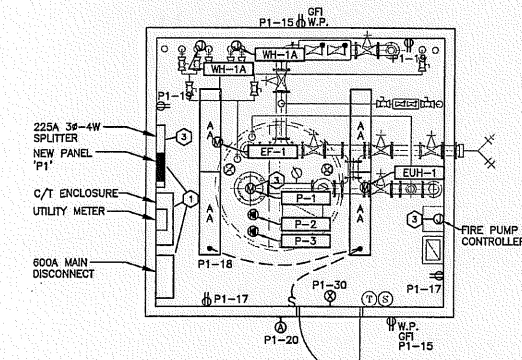
**TYPE AA:** SURFACE CEILING MOUNTED FLUORESCENT STRIP FIXTURE, 2x28 WATT T5 LAMPS, 120 VOLT, ELECTRONIC BALLAST C/W WIREGUARD.  
**COOPER 'METALUX' #DCIF-223T5-120-E**  
 OR APPROVED EQUAL

**EXIT LIGHTS**

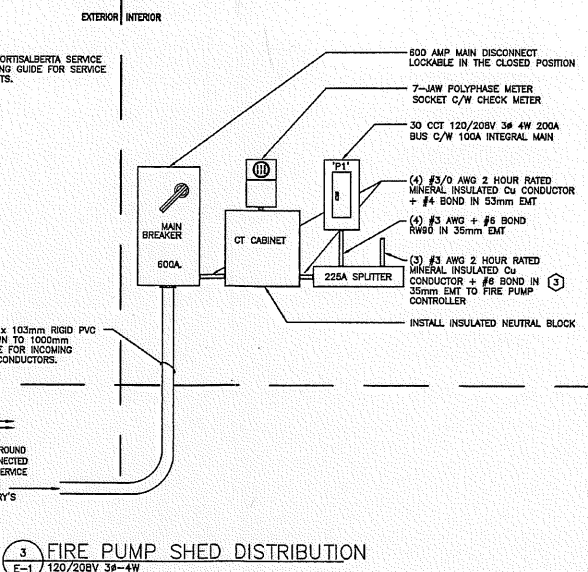
EXIT LIGHT FIXTURES SHALL BE BI-LINGUAL AND SHALL READ 'EXIT/SORTIE', LED (LIGHTING EMITTING DIODES), SOLID STATE DESIGN WITH 72 LEDS PER FACE FOR A MAXIMUM 5 WATTS PER SIGN, 120 VOLT, STEEL HOUSING WITH WHITE FINISH, ACRYLIC BARRIER, RED LETTERING, UNIVERSAL MOUNTING, UNIVERSAL KNOCKOUTS FOR ARROWS, C/W SELF CONTAINED POWER PACK WITH 8 VOLT SEALED LEAD BATTERY TO PROVIDE A MINIMUM OF 30 MINUTES OF EMERGENCY LIGHTING. POWER PACK C/W TEST SWITCH, HIGH CHARGE PILOT LIGHT, AUTO DIAGNOSTIC CAPABILITY, (2) MR16 10 WATT HEADS, AND SHALL HAVE A MINIMUM FIVE YEAR WARRANTY. EXIT LIGHTS SHALL BE LISTED BY CSA TO COMPLY WITH STANDARD CSA C860. EXIT LIGHTS SHALL BE OF ONE OF THE FOLLOWING MANUFACTURERS:

AMULITE # CXST-86L SERIES  
 OR APPROVED EQUAL

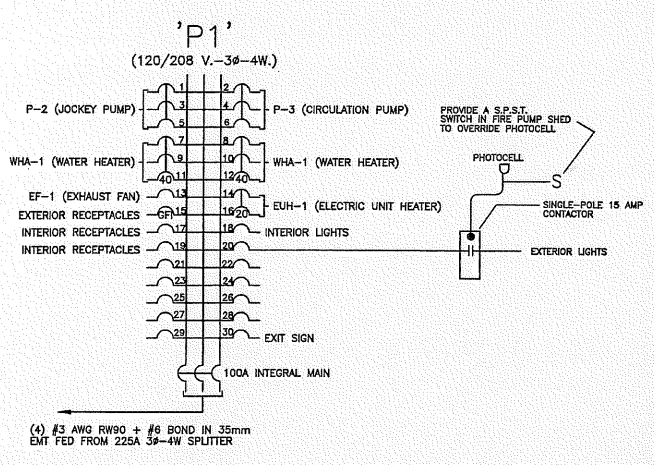
FIXTURE TYPE 'X3' - EXIT LIGHT, SURFACE WALL MOUNTED, SINGLE FACE, BOTTOM OF FIXTURE MOUNTED 100mm ABOVE DOOR, ARROWS WHERE INDICATED ON DRAWINGS.



2 FIRE PUMP ROOM  
 E-1 1:50



3 FIRE PUMP SHED DISTRIBUTION  
 E-1 120/208V 3P-4W



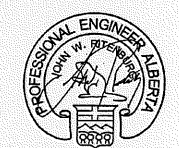
4 NEW PANEL 'P-1'  
 E-1 N.T.S.

1 SITE PLAN - ELECTRICAL  
 E-1 1:500

**Mechanical design group**  
 100 - 2330 15th Avenue, Regina, SK Canada S4P 1A2  
 phone: (306) 777-0125  
 fax: (306) 525-6790

Project Contact: JOHN YANNITISOS

**Ritenburg & Associates Ltd.**  
 Consulting Electrical Engineers  
 2008-2222 Albert Street, Regina, SK S4P 2V2  
 P: (306) 558-2305 F: (306) 565-1307  
 Email: rai@ritenburg.com



2013 03 28  
 YR. MIN. DAY  
 MEMBER #56263

**PERMIT TO PRACTICE**  
 Ritenburg & Associates Ltd.  
 Signature: *[Signature]*  
 Date: March 28, 2013  
 PERMIT NUMBER P-5859  
 The Association of Professional Engineers,  
 Geologists and Geophysicists of Alberta

Client:  
**GOVERNMENT OF CANADA**

**SITE FIRE PROTECTION RETROFIT**  
 Innisfail, Alberta

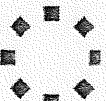
**ELECTRICAL**

File 12-025.1	Drawing Number:
Date 2013-03-28	<b>E1</b>
Scale: AS NOTED	
Drawn: CJC	
Checked: MKL	Rev: 0 Dwg 1 of 1

Description: By: Date: Revisions: No.



Cutsheet #: TR-SI-15-999.1

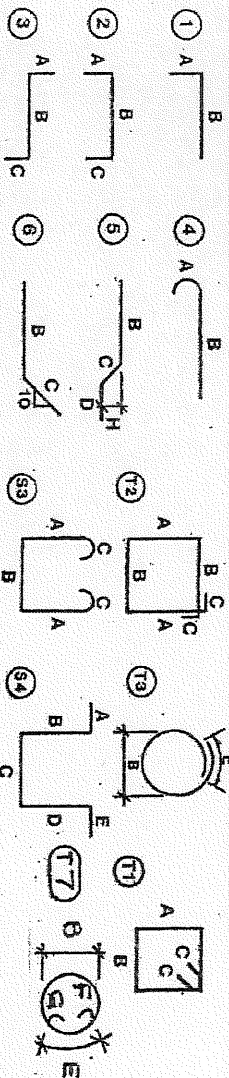


CWV INDUSTRIES

P.O. #:

Purchaser: Trainor Mechanical Contractors Ltd  
 Project: Site Fire Protection Retrofit  
 Location: Innisfail, AB  
 Portion: SLAB

Sheet No: 2 of 2 Job #:  
 Job Phone #: Frank 250-354-8179  
 Ref. Dwg.: R-2  
 Date: 8/27/2013 Drawn By: SS



All Dimensions Marked \* are Critical

Item	Mark	NO.	Size	Metric	Imp.	Type	A	B	C	D	E	F	G	H	Weights
1		2	20	2.600		-									12
2		4	20	2.500		-									24
3		2	20	2.025		-									10
4		4	20	1.800		-									17
5		10	20	1.500		-									35
6						-									0
7		30	10	4.495		-									106
8		32	10	4.195		-									105
9															0
10															0
11															0
12															0
13															0
14															0
15															0
16															0
17															0
18															0
19															0
20															0
21															0
22															0
23															0
24															0
25															0
26															0
27															0
28															0
29															0
30															0

PLACER

① WHITE ② RED ③ DARK GREEN ④ YELLOW ⑤ DARK BLUE ⑥ LIGHT GREEN ⑦ ORANGE ⑧ LIGHT BLUE ⑨ BLACK ⑩ PINK  
 Center Code: White WELDABLE: Y N GRADE 400 Quoted: Yes

CUSTOMERS SIGNATURE VERIFIES SHIPMENT RECEIVED IN GOOD ORDER:  
 SHORTAGES MUST BE REPORTED WITHIN 3 DAYS OF DELIVERY  
 ALL DELIVERIES F.O.B. TRUCK

TOTAL WEIGHT:  
 LBS: 681  
 KGS: 309

Delivery Instructions: Delivery 9/3/2013