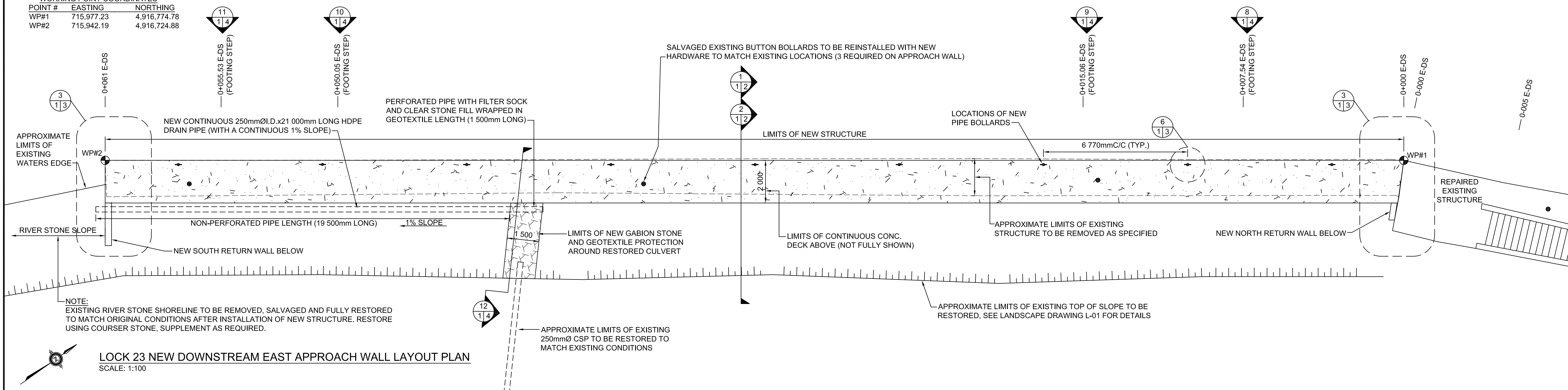


0 10 20 30 40 50 60 70 80 90 100 110 120 130 140 150 160 170 180 190 200 millimetres

WORKING POINT COORDINATES

POINT #	EASTING	NORTHING
WP#1	715,977.23	4,916,774.78
WP#2	715,942.19	4,916,724.88



LOCK 23 NEW DOWNSTREAM EAST APPROACH WALL LAYOUT PLAN
SCALE: 1:100

TRENT SEVERN WATERWAY,
NATIONAL HISTORIC SITE OF CANADA,
PARKS CANADA AGENCY



RIGGS ENGINEERING Ltd.
1240 COMMISSIONERS Rd. WEST
SUITE 205
LONDON, ONTARIO
N6K 1C7
(519)-657-1040
WWW.RIGGSENGINEERING.COM



revision	description	date
1	REVISED DETAILS	07/02/2015
0	ISSUED FOR TENDER	06/17/2015

Do not scale drawings.
Verify all dimensions and conditions on site and immediately notify the department representative of all discrepancies.

Detail No.	No. du détail
A	Detail No. - where detail required
B	drawing no. - où détail exigé
C	drawing no. - where detailed
	dessin no. - où détaillé

project title
titre du projet
PETERBOROUGH ONTARIO

CONCRETE CANAL WALL REHABILITATION
LOCK 23, TRENT SEVERN WATERWAY, PARKS
CANADA AGENCY

drawing title
titre du dessin
**LOCK 23
NEW STRUCTURE LAYOUT
AND SITE ACCESS**

drawn by
dessiné par
A.MARCZENKO

designed by
conçue par
P.L. / W.H. / A.M.

approved by
approuvé par
P.LAMPKIN

tender submission
soumission
DUNCAN MANSER project manager
administrateur de projets

project date
date du projet
JUNE 16, 2015

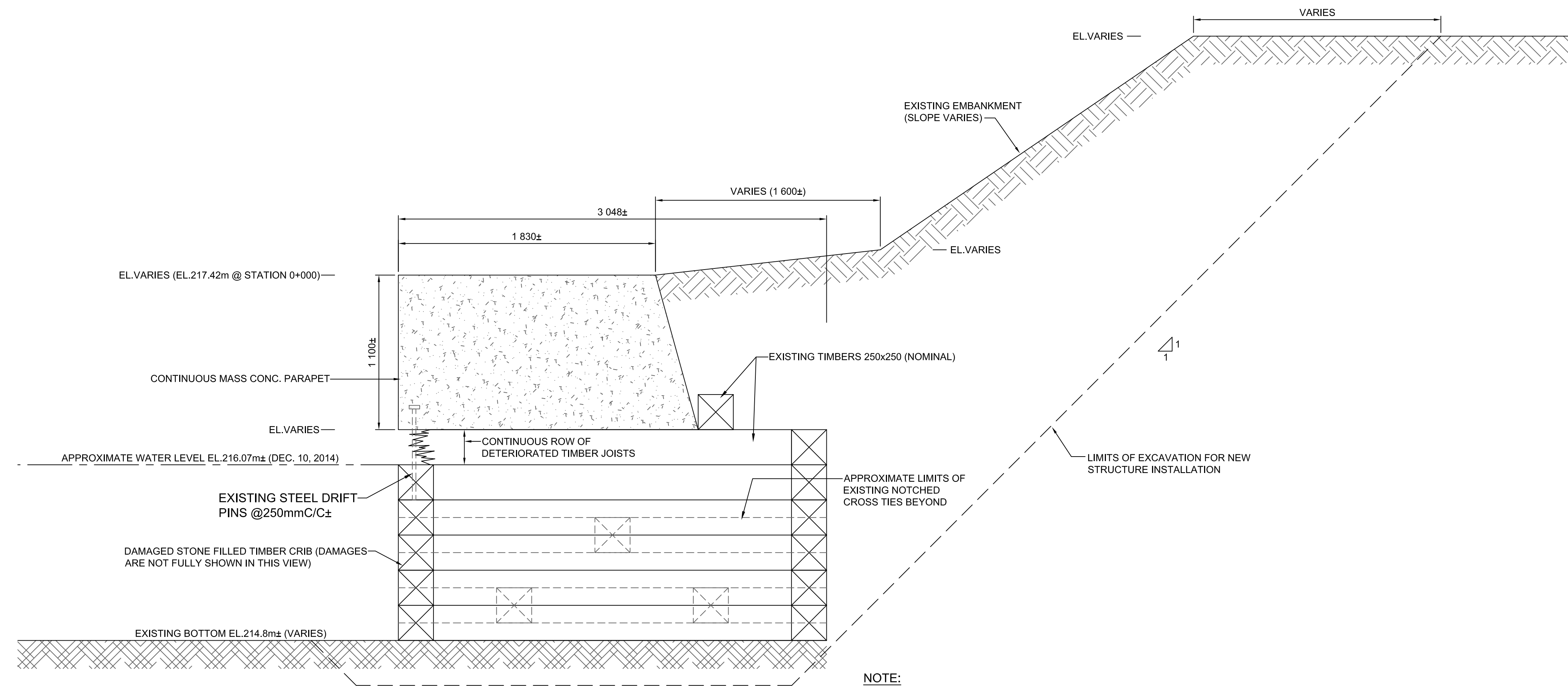
project no.
no. du projet
30025771-4272-33

drawing no.
dessiné no.
C-01



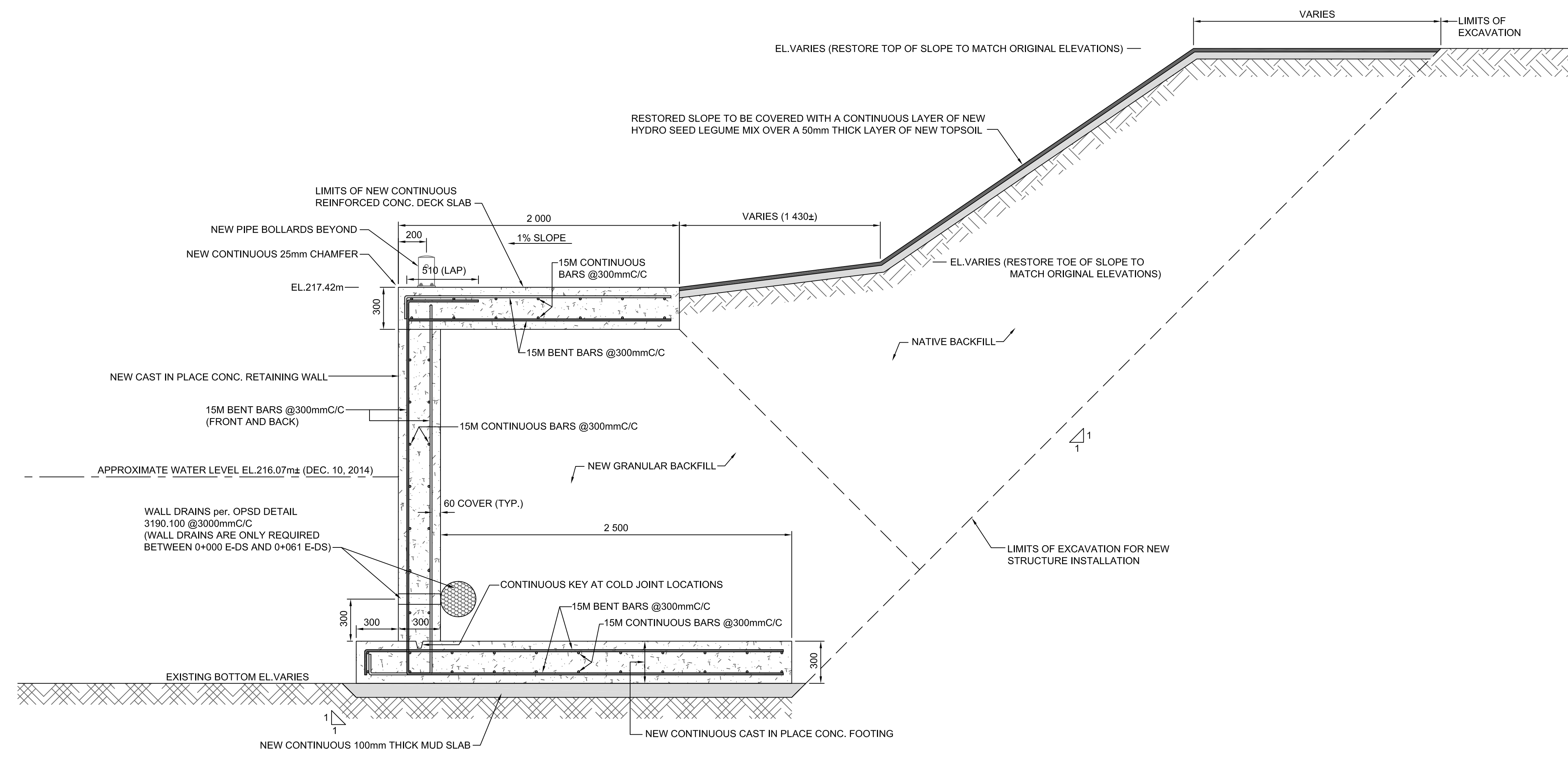
LOCK 23 COFFER DAM AND SITE ACCESS LAYOUT
SCALE: 1:400

0 10 20 30 40 50 60 70 80 90 100 110 120 130 140 150 160 170 180 190 200 millimetres



1
1/2 TYP. SECTION OF EXISTING STRUCTURE - (0+000 E-DS TO 0+061 E-DS)
SCALE: 1:20

NOTE:
EXISTING STRUCTURE TO BE COMPLETELY
DEMOLISHED FOR FULL LENGTH (61000mm±).



2
1/2 TYP. SECTION OF NEW STRUCTURE - (0+000 E-DS TO 0+061 E-DS)
SCALE: 1:20

TRENT SEVERN WATERWAY,
NATIONAL HISTORIC SITE OF CANADA,
PARKS CANADA AGENCY

RIGGS
ENGINEERING
RIGGS ENGINEERING Ltd.
1240 COMMISSIONERS Rd. WEST
SUITE 205
LONDON, ONTARIO
N6K 1C7
(519)-657-1040
WWW.RIGGSENGINEERING.COM



0	ISSUED FOR TENDER	06/17/2015
revision		date

Do not scale drawings.
Verify all dimensions and conditions on site and immediately
notify the department representative of all discrepancies.

A	Detail No.
B	No. du détail
B/C	drawing no. - where detail required
C	dessin no. - où détail exigé
	drawing no. - where detailed
	dessin no. - où détaillé

project title
titre du projet
PETERBOROUGH ONTARIO

CONCRETE CANAL WALL REHABILITATION
LOCK 23, TRENT SEVERN WATERWAY, PARKS
CANADA AGENCY

drawing title
titre du dessin
**LOCK 23
TYP. SECTIONS**

drawn by
dessiné par
A.MARCZENKO

designed by
conc par

approved by
approuvé par

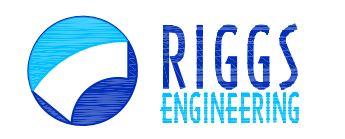
tender
soumission
DUNCAN MANSER

project manager
administrateur
de projets

project date
date du projet
JUNE 16, 2015

project no.
no. du projet
30025771-4272-33

drawing no.
dessiné no.
C-02



RIGGS ENGINEERING Ltd.
1240 COMMISSIONERS Rd. WEST
SUITE 205
LONDON, ONTARIO
N6K 1C7
(519)-657-1040
WWW.RIGGSENGINEERING.COM



revision	description	date
1	REVISED DETAILS	07/02/2015
0	ISSUED FOR TENDER	06/17/2015

Do not scale drawings.
Verify all dimensions and conditions on site and immediately notify the department representative of all discrepancies.

A	Detail No.
B	No. du détail
B/C	— where detail required
	dessin no. — où détail exigé
C	drawing no. — where detailed
	dessin no. — où détaillé

project title
titre du projet
PETERBOROUGH ONTARIO

CONCRETE CANAL WALL REHABILITATION
LOCK 23, TRENT SEVERN WATERWAY, PARKS
CANADA AGENCY

drawing title
titre du dessin
**LOCK 23
TYP. DETAILS**

drawn by
dessiné par
A.MARCZENKO

designed by
conçue par
P.L. / W.H. / A.M.

approved by
approuvé par
P.LAMPKIN

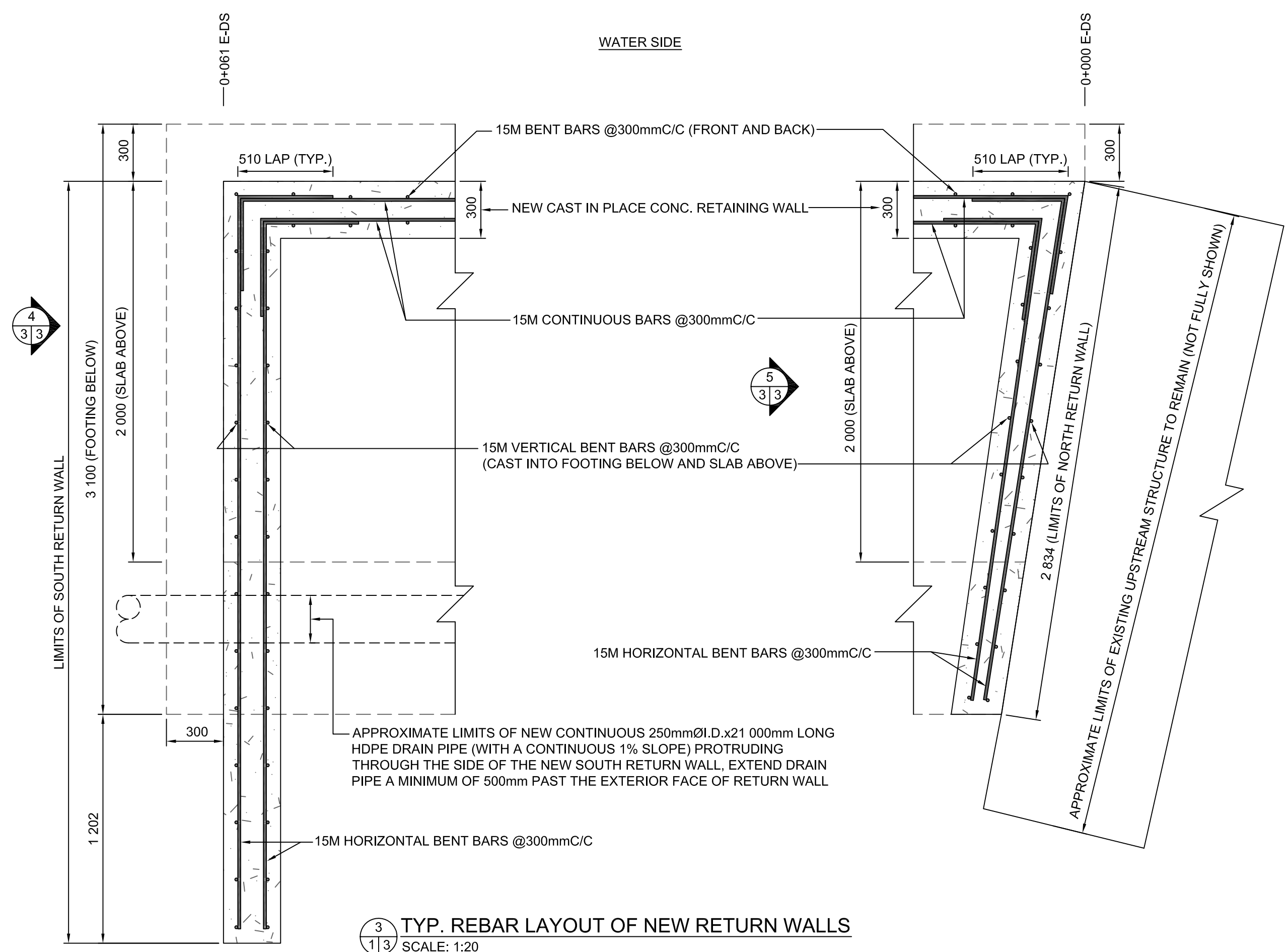
tender
soumission
DUNCAN MANSER

project manager
administrateur
de projets

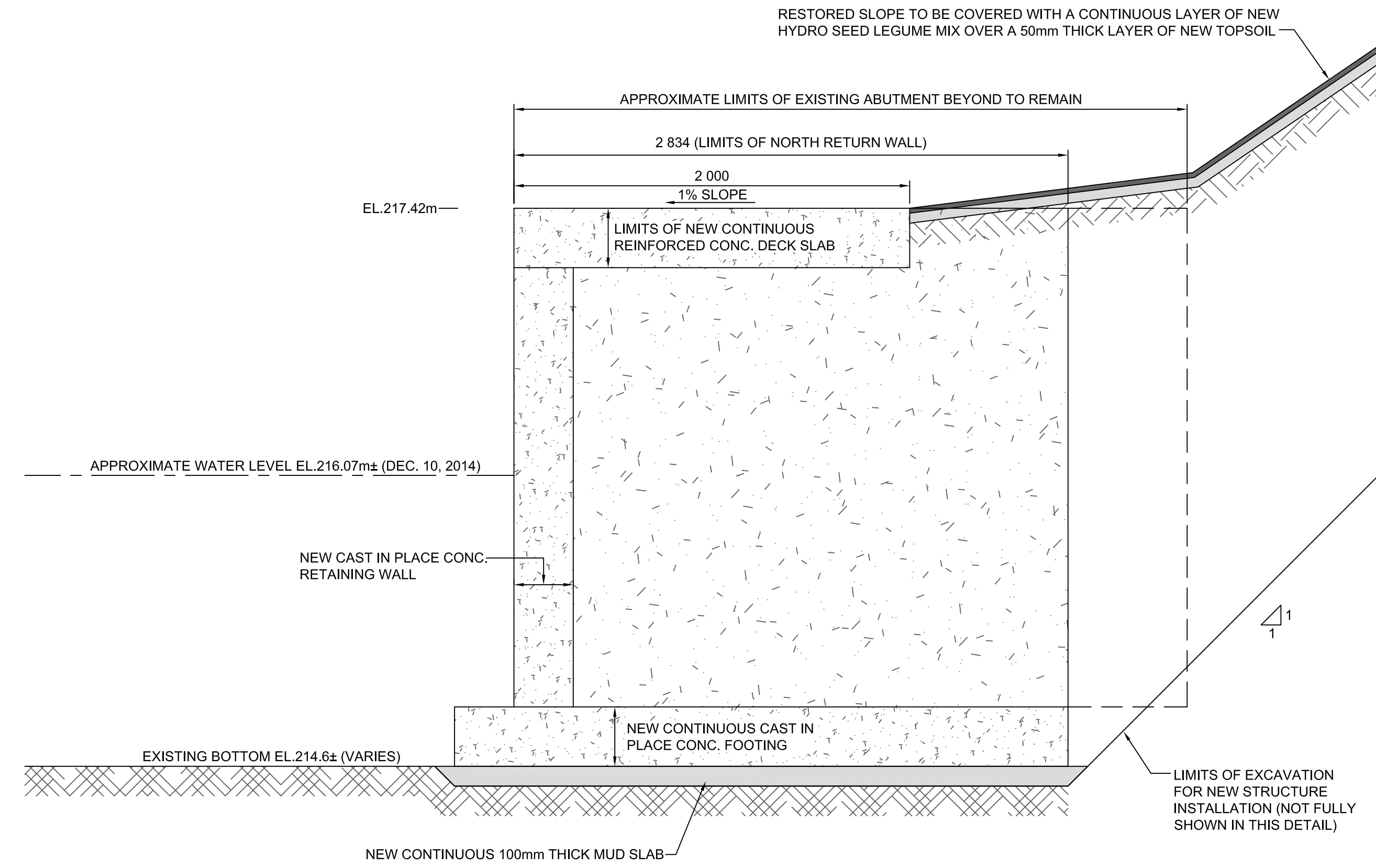
project date
date du projet
JUNE 16, 2015

project no.
no. du projet
30025771-4272-33

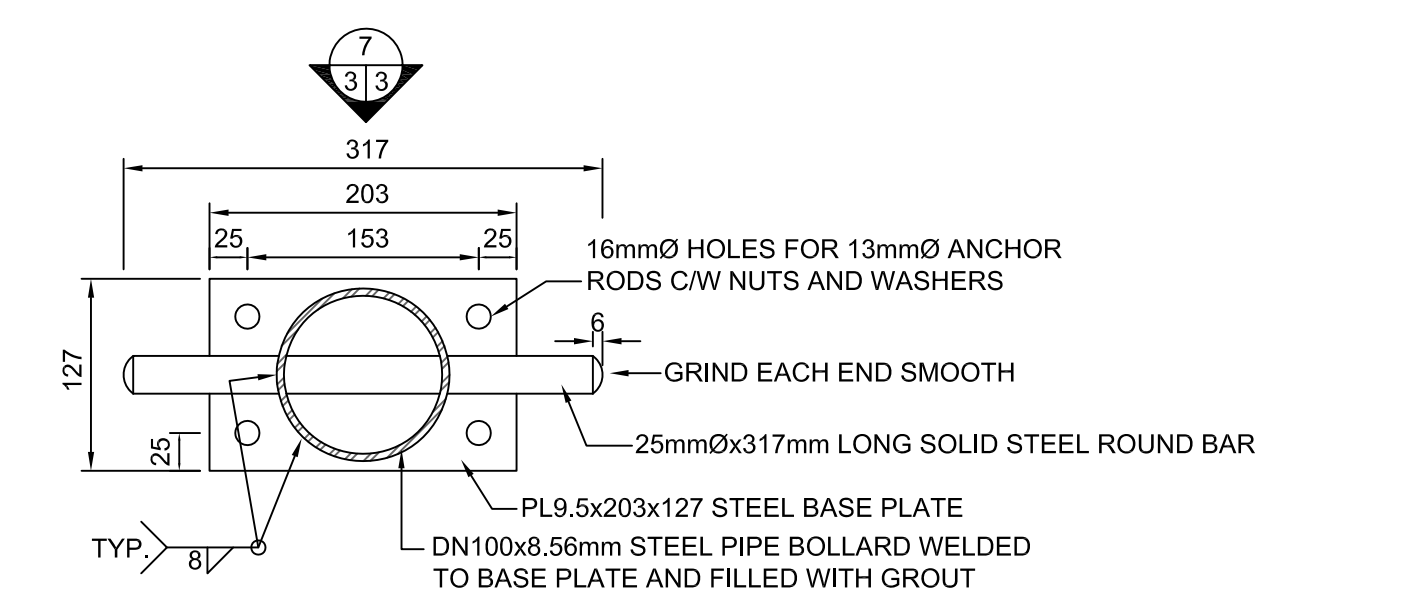
drawing no.
dessiné no.
C-03



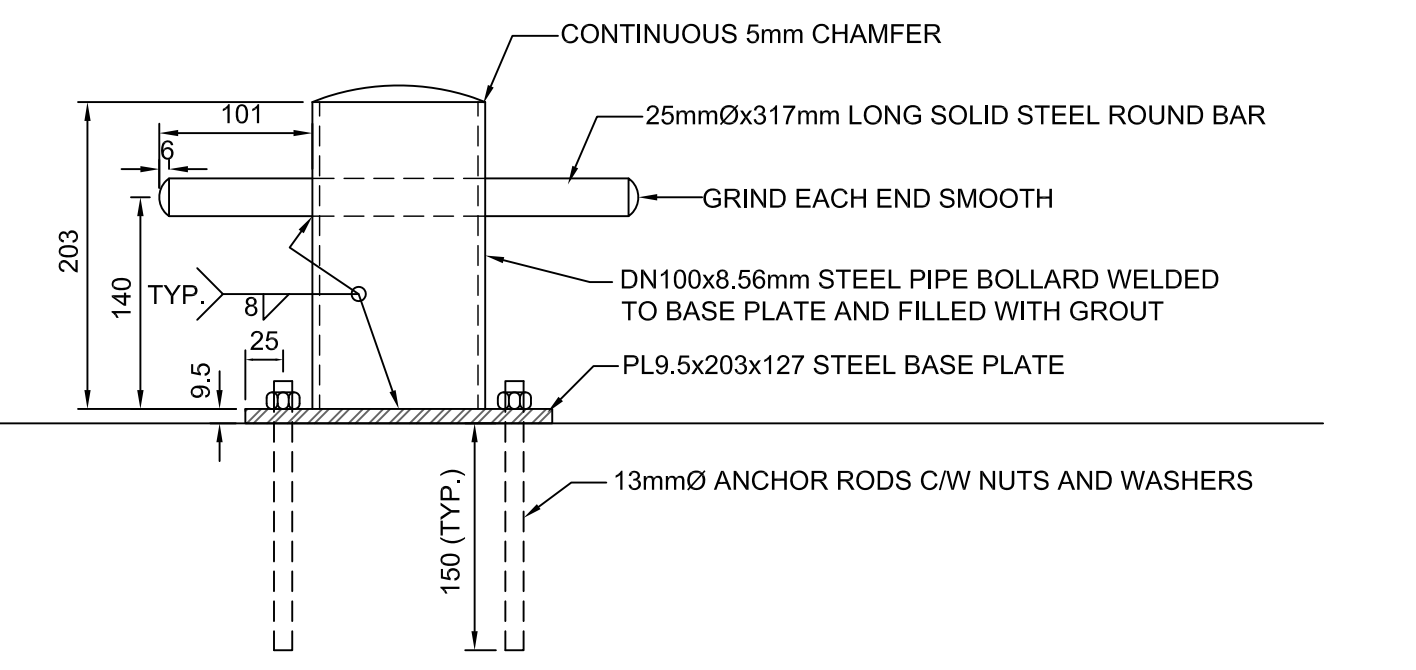
3 TYP. REBAR LAYOUT OF NEW RETURN WALLS
SCALE: 1:20



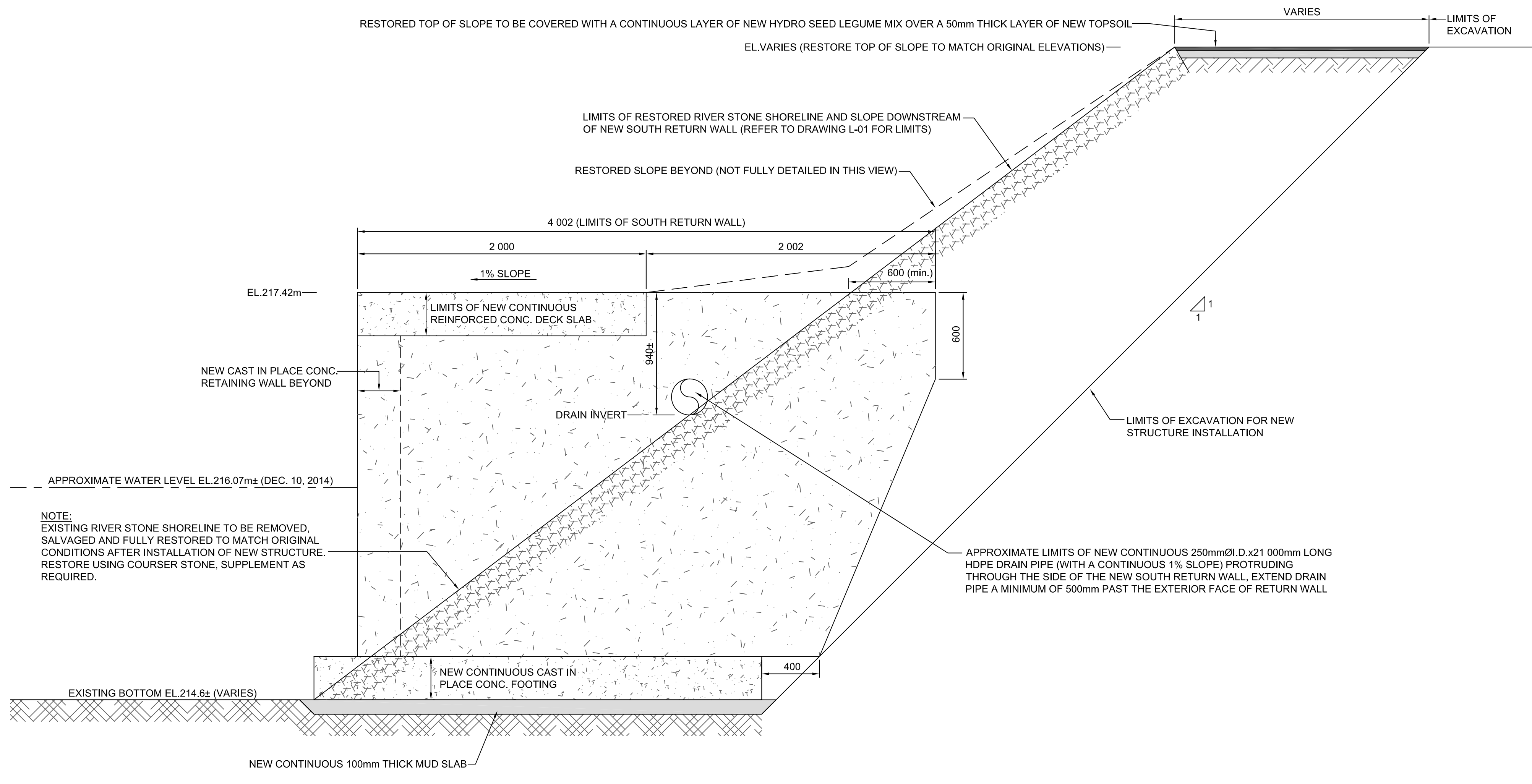
5 ELEVATION OF NEW NORTH RETURN WALL
SCALE: 1:20



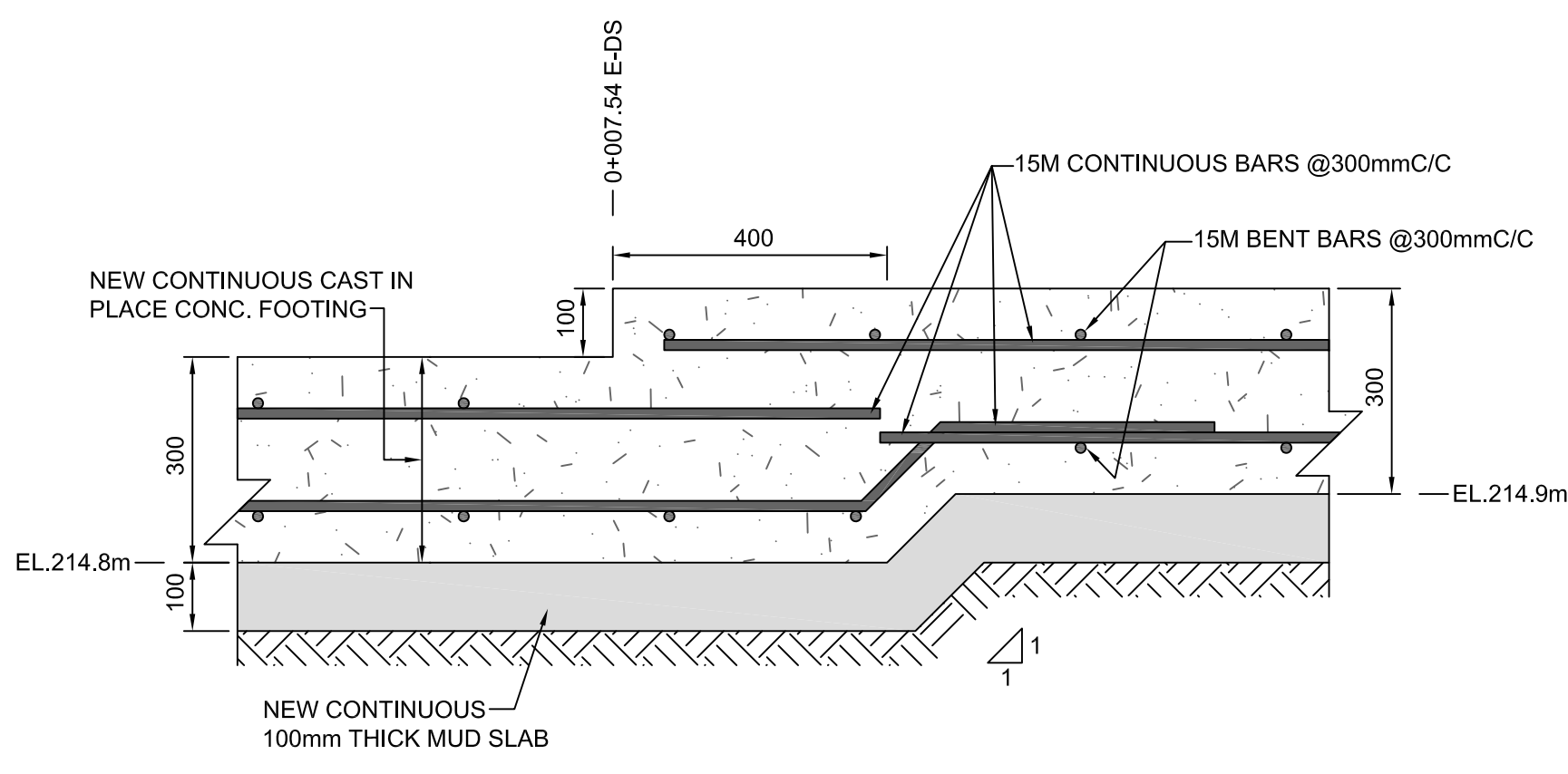
6 TYP. NEW BOLLARD DETAIL
SCALE: 1:5
NOTE: ALL NEW BOLLARDS AND HARDWARE TO BE GALVANIZED AFTER FABRICATION AND PRIOR TO INSTALLATION.



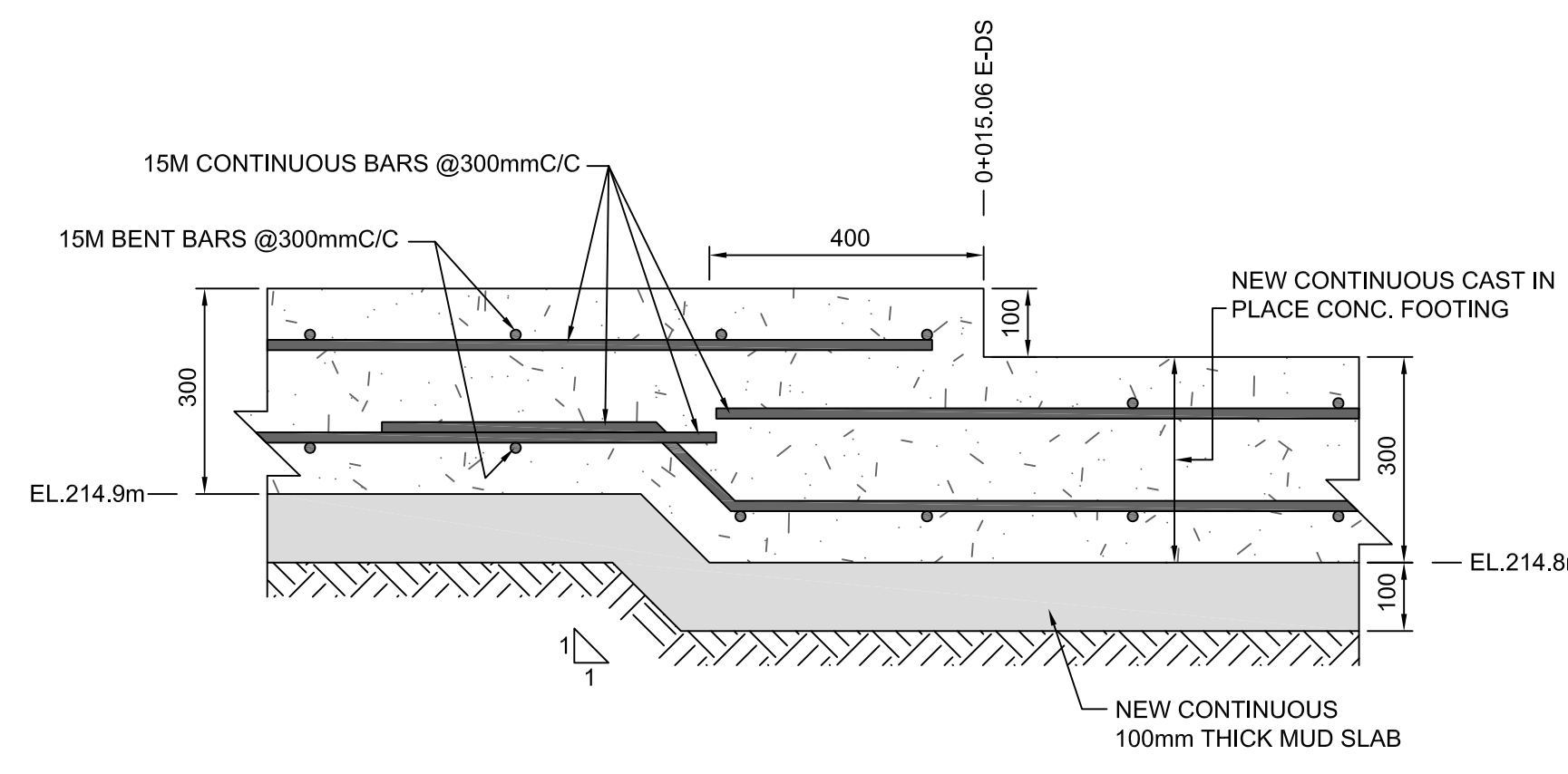
7 TYP. NEW BOLLARD ELEVATION DETAIL
SCALE: 1:5



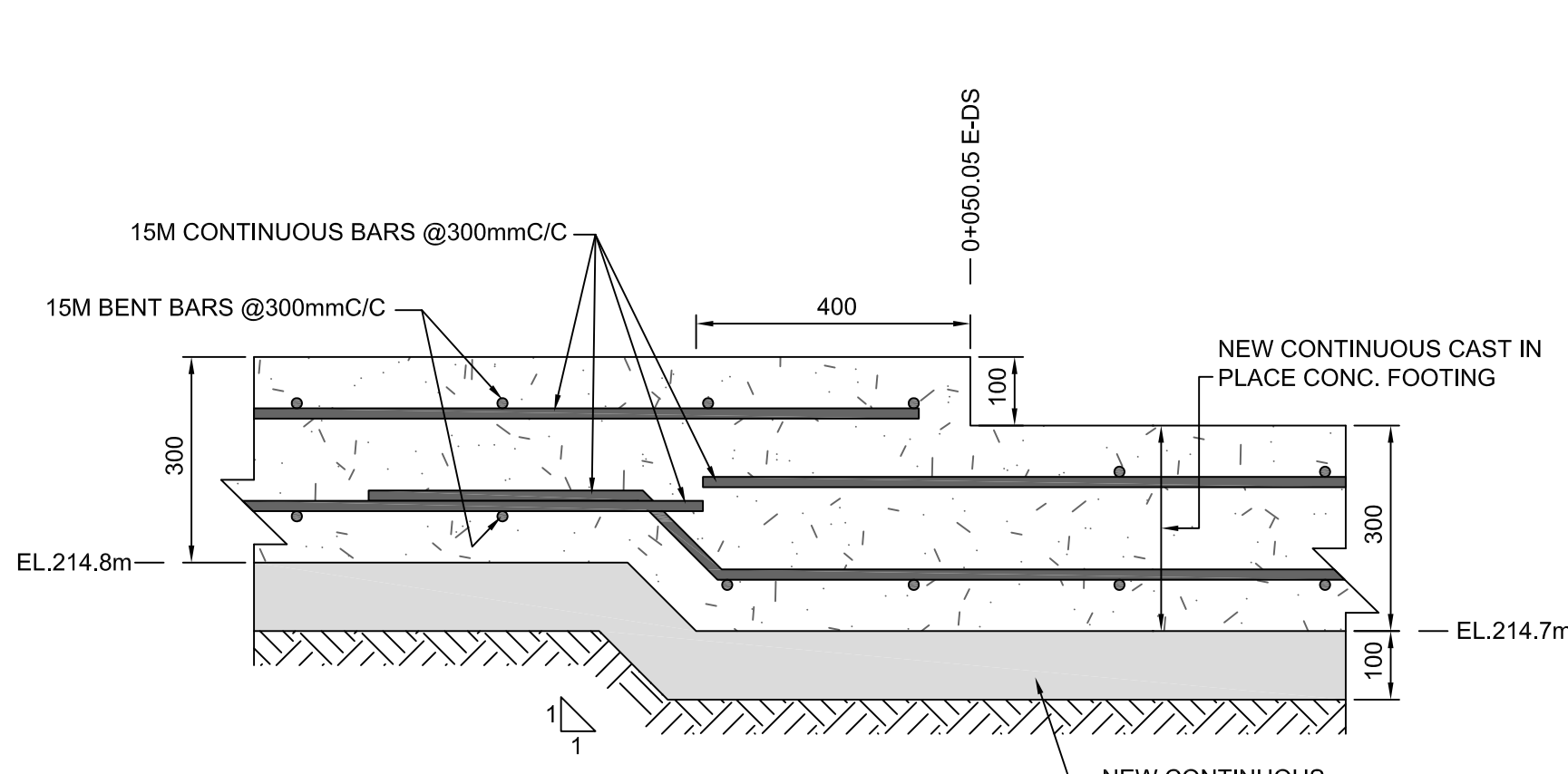
4 ELEVATION OF NEW SOUTH RETURN WALL
SCALE: 1:20



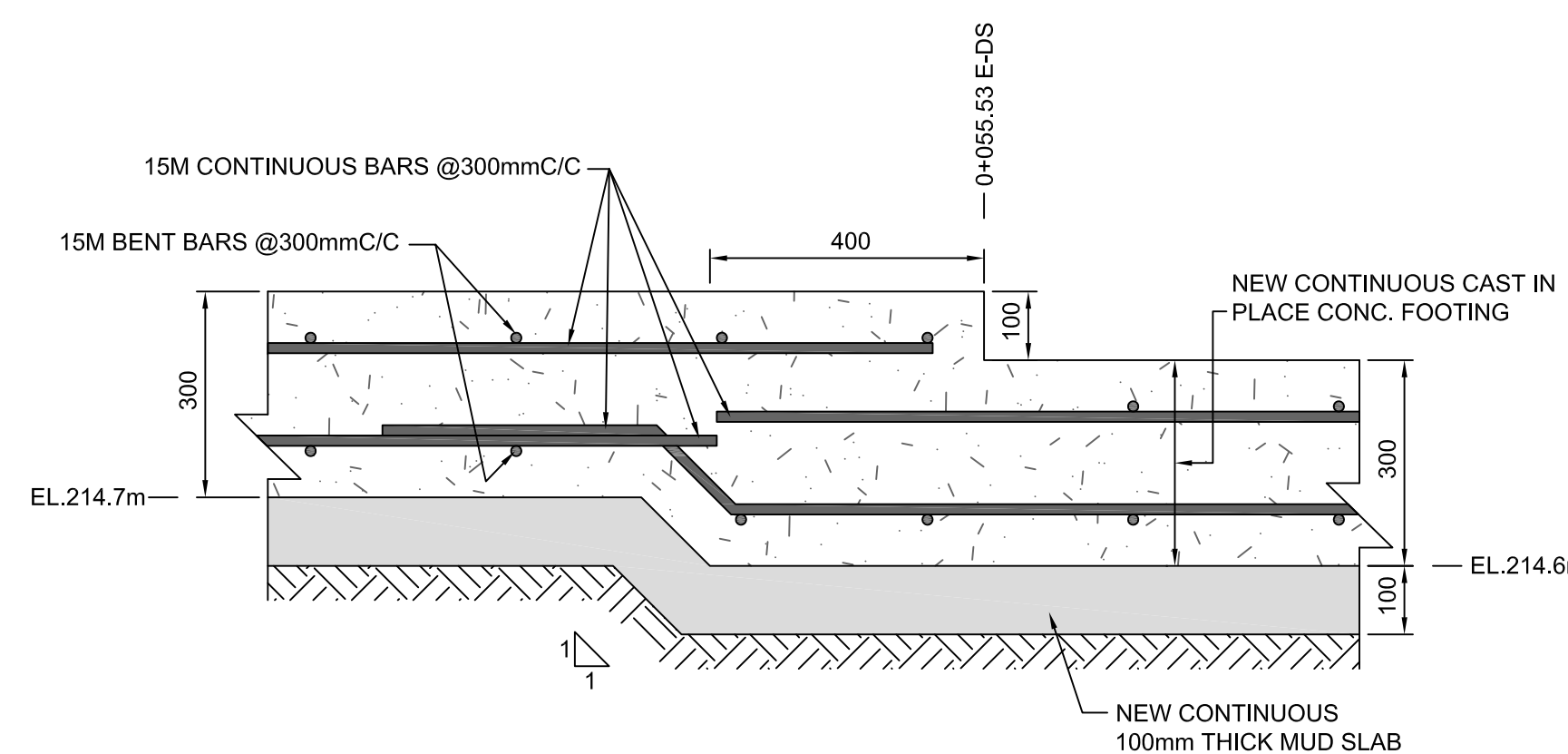
8
14
DETAIL OF STEP IN NEW CONC. FOOTING - (0+007.54 E-DS)
SCALE: 1:10



9
14
DETAIL OF STEP IN NEW CONC. FOOTING - (0+015.06 E-DS)
SCALE: 1:10

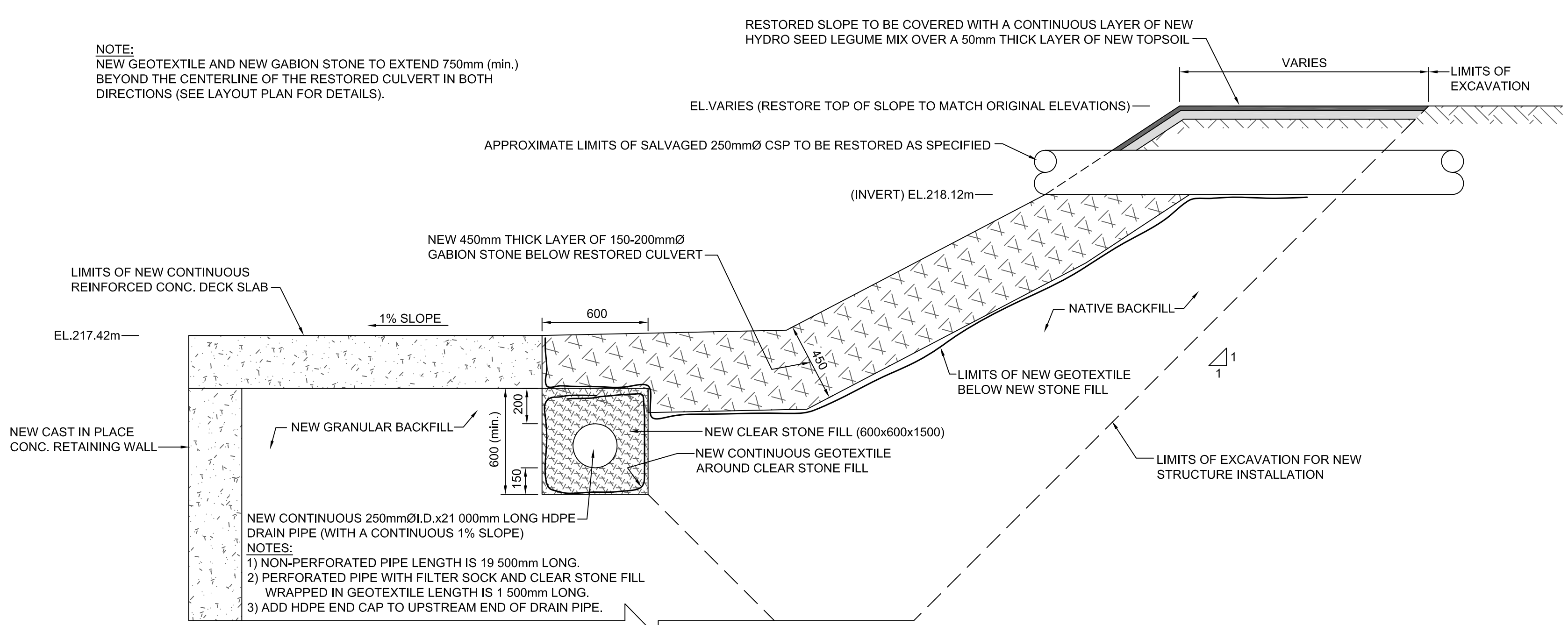


10
14
DETAIL OF STEP IN NEW CONC. FOOTING - (0+050.05 E-DS)
SCALE: 1:10



11
14
DETAIL OF STEP IN NEW CONC. FOOTING - (0+055.53 E-DS)
SCALE: 1:10

NOTE:
NEW GEOTEXTILE AND NEW GABION STONE TO EXTEND 750mm (min.)
BEYOND THE CENTERLINE OF THE RESTORED CULVERT IN BOTH
DIRECTIONS (SEE LAYOUT PLAN FOR DETAILS).



12
14
TYP. SECTION OF CULVERT RESTORATION
SCALE: 1:20



revision		date
1	REVISED DETAILS	07/02/2015
0	ISSUED FOR TENDER	06/17/2015

Do not scale drawings.
Verify all dimensions and conditions on site and immediately
notify the department representative of all discrepancies.

A	Detail No.
B	No. du détail
C	drawing no. - where detail required dessin no. - où détail exigé
	drawing no. - where detailed dessin no. - où détaillé

project title
titre du projet
PETERBOROUGH ONTARIO

CONCRETE CANAL WALL REHABILITATION
LOCK 23, TRENT SEVERN WATERWAY, PARKS
CANADA AGENCY

drawing title
titre du dessin
**LOCK 23
TYP. DETAILS**

drawn by
dessiné par
A.MARCZENKO

designed by
conc par
P.L. / W.H. / A.M.

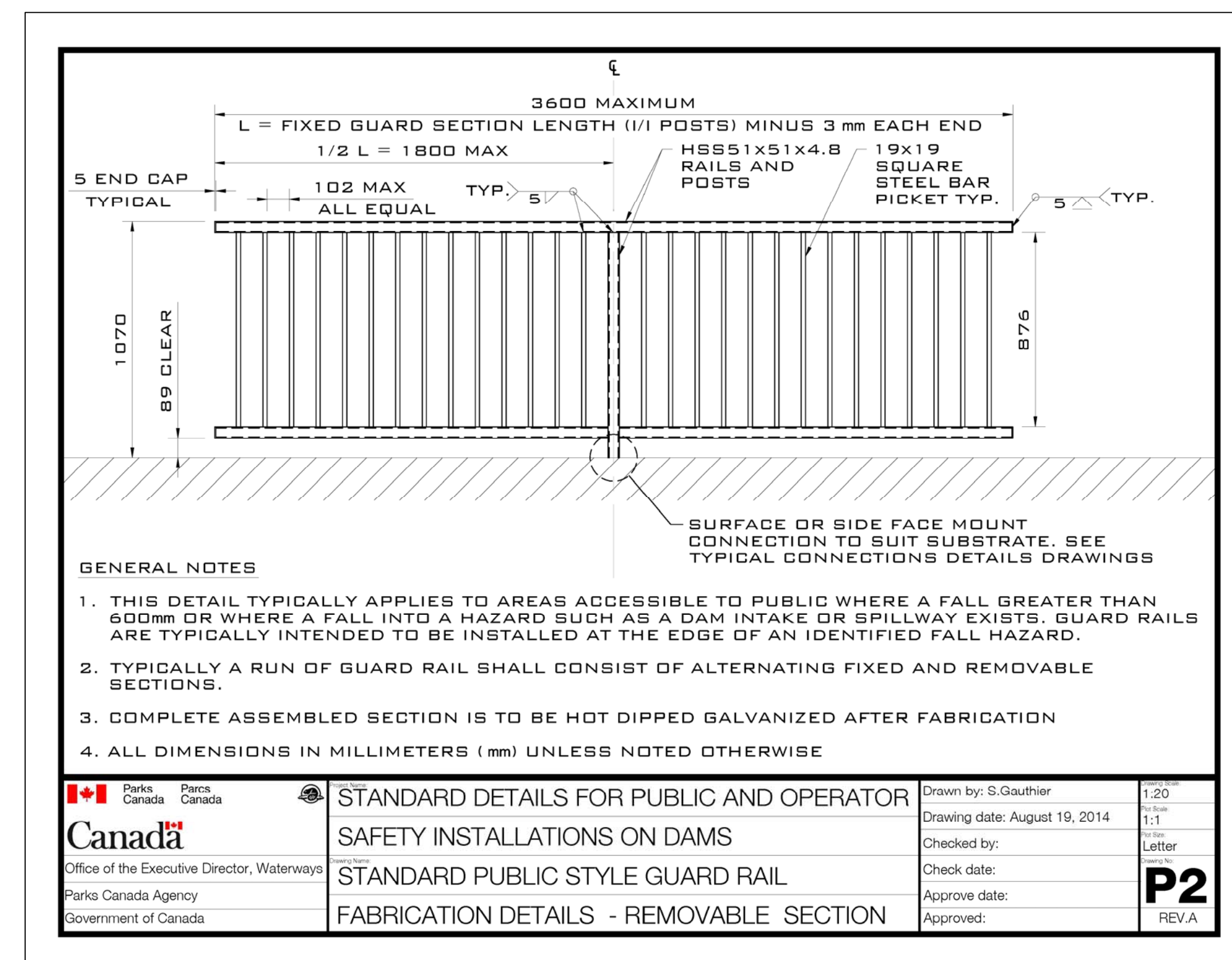
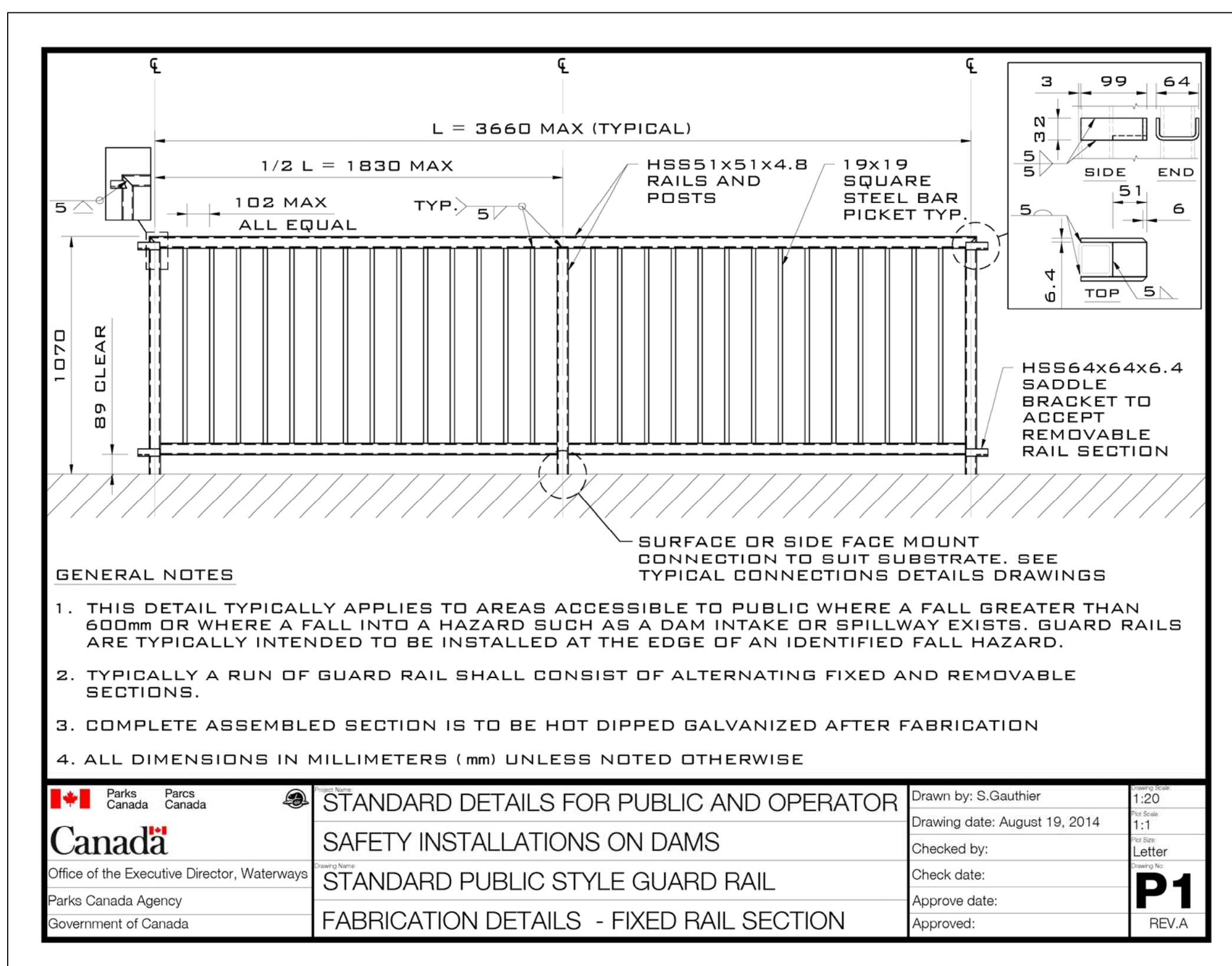
approved by
approuvé par
P.LAMPKIN

tender
soumission
DUNCAN MANSER project manager
administrateur de projets

project date
date du projet
JUNE 16, 2015

project no.
no. du projet
30025771-4272-33

drawing no.
dessiné no.
C-04



0	ISSUED FOR TENDER	06/17/2015
revision		date

Do not scale drawings.
Verify all dimensions and conditions on site and immediately notify the department representative of all discrepancies.

A B C	A Detail No.
	B drawing no. - where detail required
	C drawing no. - where detailed

project title
titre du projet
PETERBOROUGH ONTARIO

CONCRETE CANAL WALL REHABILITATION
LOCK 23, TRENT SEVERN WATERWAY, PARKS
CANADA AGENCY

drawing title
titre du dessin
TYP. DETAILS

drawn by
dessiné par
A.MARCZENKO

designed by
conc par

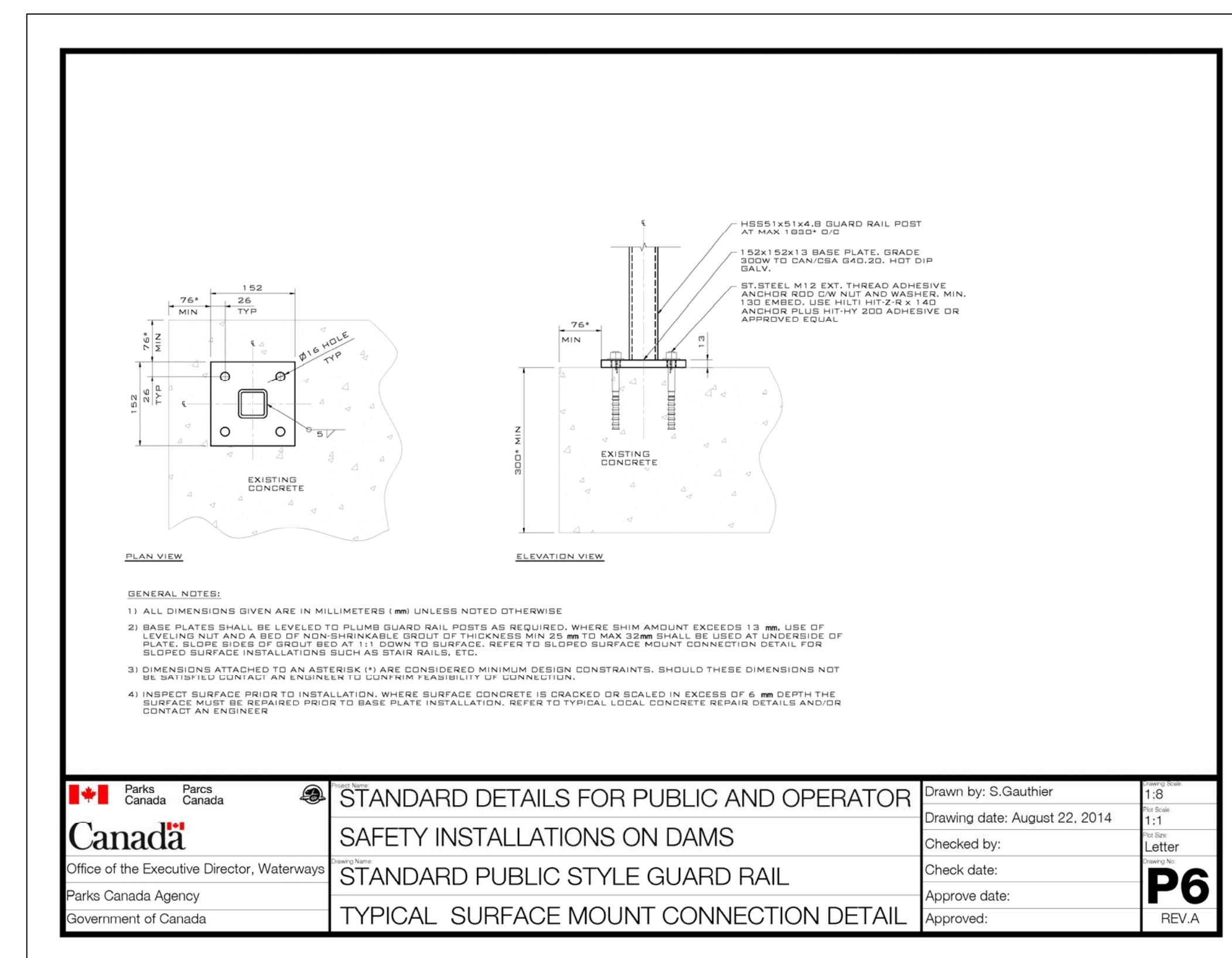
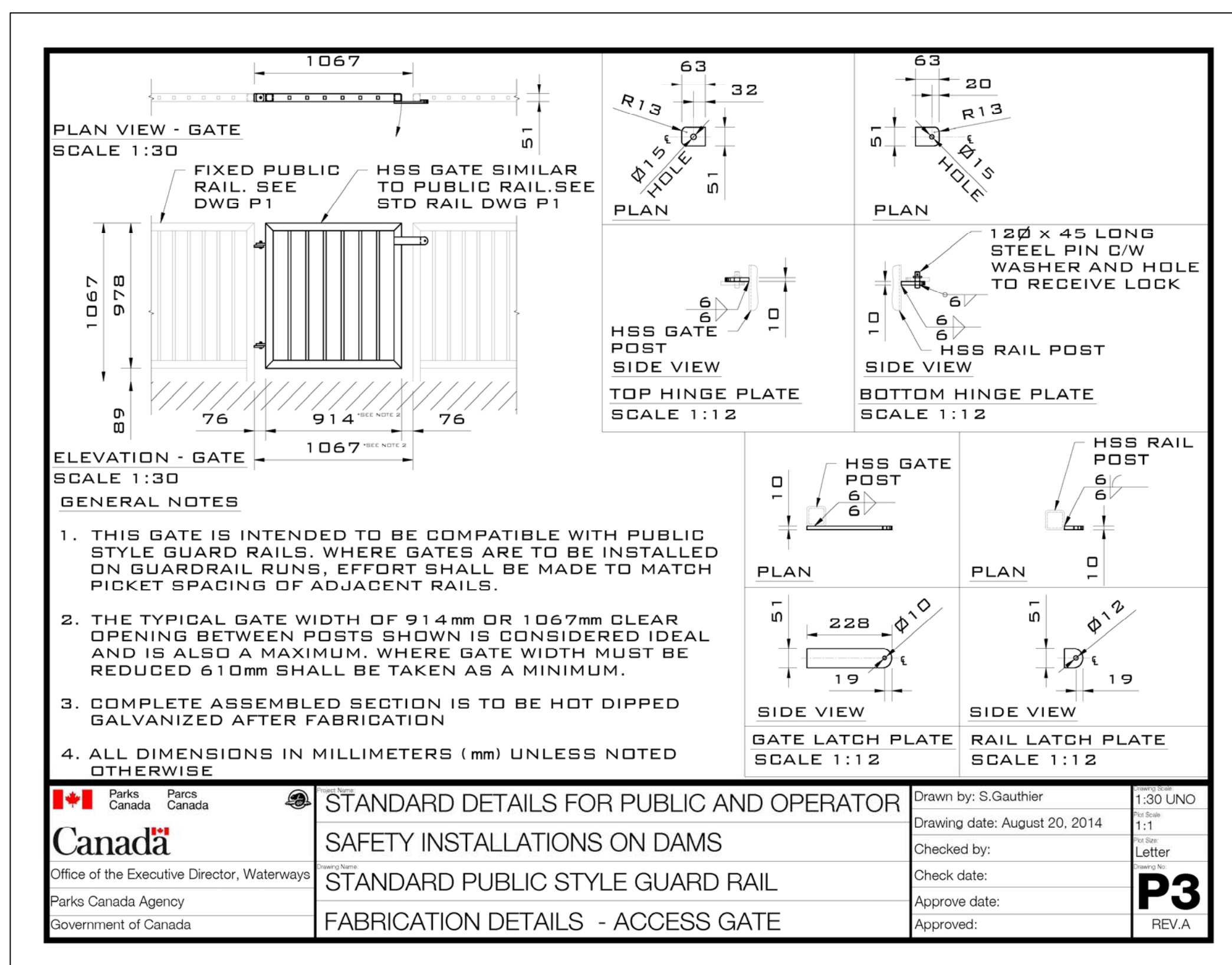
approved by
approuvé par

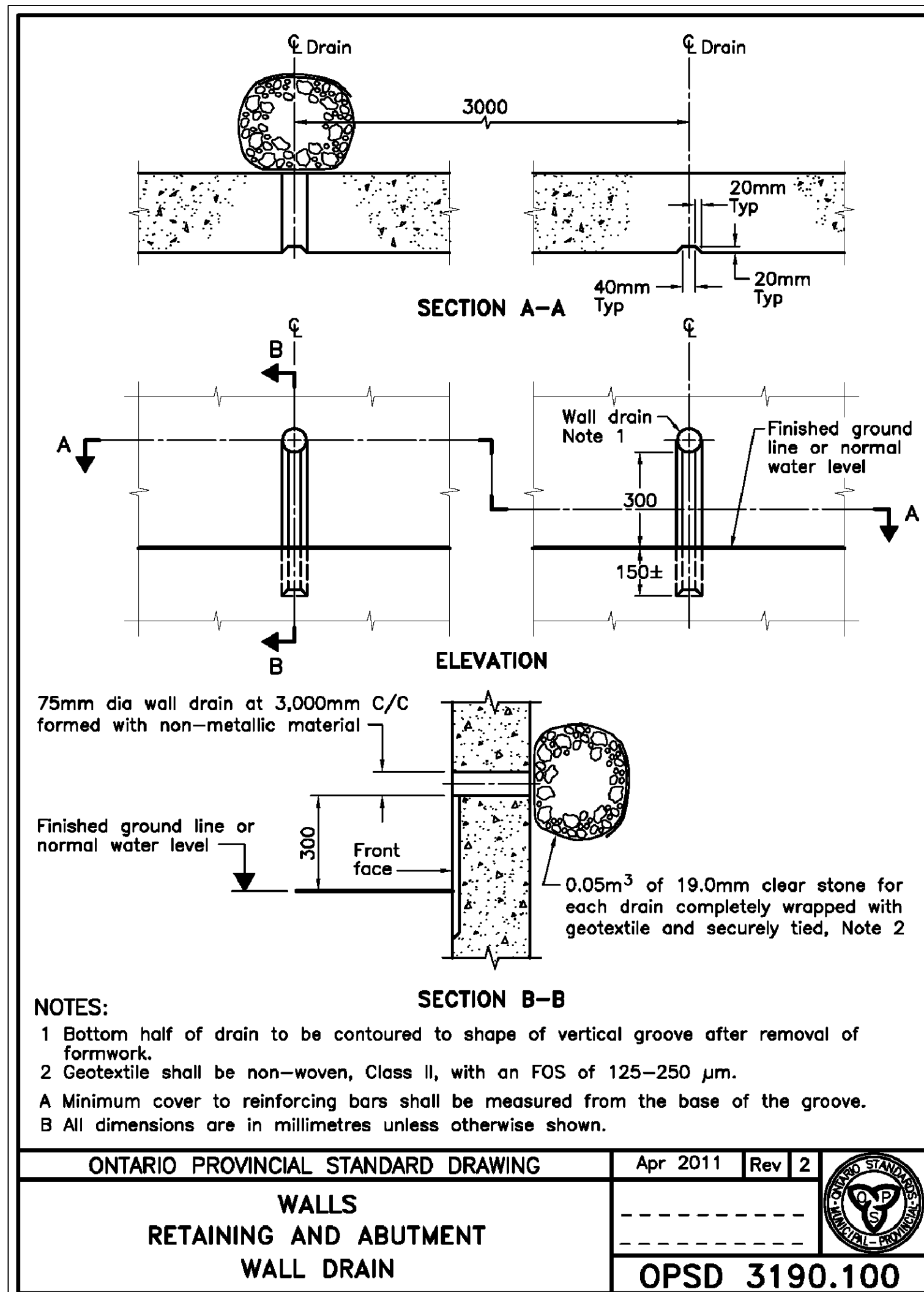
tender
soumission
DUNCAN MANSER project manager
administrateur de projets

project date
date du projet
JUNE 16, 2015

project no.
no. du projet
30025771-4272-33

drawing no.
dessiné no.
D-01





RIGGS ENGINEERING Ltd.
1240 COMMISSIONERS Rd. WEST
SUITE 205
LONDON, ONTARIO
N6K 1C7
(519)-657-1040
WWW.RIGGSENGINEERING.COM



0	ISSUED FOR TENDER	06/17/2015
revision		date

Do not scale drawings.
Verify all dimensions and conditions on site and immediately notify the department representative of all discrepancies.

	A Detail No. No. du détail
	B drawing no. - where detail required dessin no. - où détail exigé
	C drawing no. - where detailed dessin no. - où détaillé

project title
titre du projet
PETERBOROUGH ONTARIO

CONCRETE CANAL WALL REHABILITATION
LOCK 23, TRENT SEVERN WATERWAY, PARKS
CANADA AGENCY

drawing title
titre du dessin
TYP. DETAILS

drawn by
dessiné par
A.MARCZENKO

designed by
conçue par

approved by
approuvé par

tender
soumission
DUNCAN MANSER

project manager
administrateur
de projets

project date
date du projet
JUNE 16, 2015

project no.
no. du projet
30025771-4272-33

drawing no.
dessiné no.
D-02