

SECTION TO ILLUSTRATE
 COLLINS BAY & FRONTENAC INSTITUTES
 (INCLUDING BRIDGE HOUSE)
 BEING
 PART OF LOTS 9, 10, 11, 12, 13,
 14 AND 15
 AND
 PART OF THE ROAD ALLOWANCE
 BETWEEN LOTS 9 AND 10,
 CONCESSION 1,
 CITY OF KINGSTON
 COUNTY OF FRONTENAC

NOTES:
 1. THIS PLAN IS CONTROLLED BY THE SURVEY ACT, R.S.O. 1990, CHAPTER S.5.
 2. THIS PLAN IS CONTROLLED BY THE SURVEY ACT, R.S.O. 1990, CHAPTER S.5.
 3. THIS PLAN IS CONTROLLED BY THE SURVEY ACT, R.S.O. 1990, CHAPTER S.5.
 4. THIS PLAN IS CONTROLLED BY THE SURVEY ACT, R.S.O. 1990, CHAPTER S.5.
 5. THIS PLAN IS CONTROLLED BY THE SURVEY ACT, R.S.O. 1990, CHAPTER S.5.
 6. THIS PLAN IS CONTROLLED BY THE SURVEY ACT, R.S.O. 1990, CHAPTER S.5.
 7. THIS PLAN IS CONTROLLED BY THE SURVEY ACT, R.S.O. 1990, CHAPTER S.5.
 8. THIS PLAN IS CONTROLLED BY THE SURVEY ACT, R.S.O. 1990, CHAPTER S.5.
 9. THIS PLAN IS CONTROLLED BY THE SURVEY ACT, R.S.O. 1990, CHAPTER S.5.
 10. THIS PLAN IS CONTROLLED BY THE SURVEY ACT, R.S.O. 1990, CHAPTER S.5.

PUBLIC WORKS & GOVERNMENT SERVICES CANADA

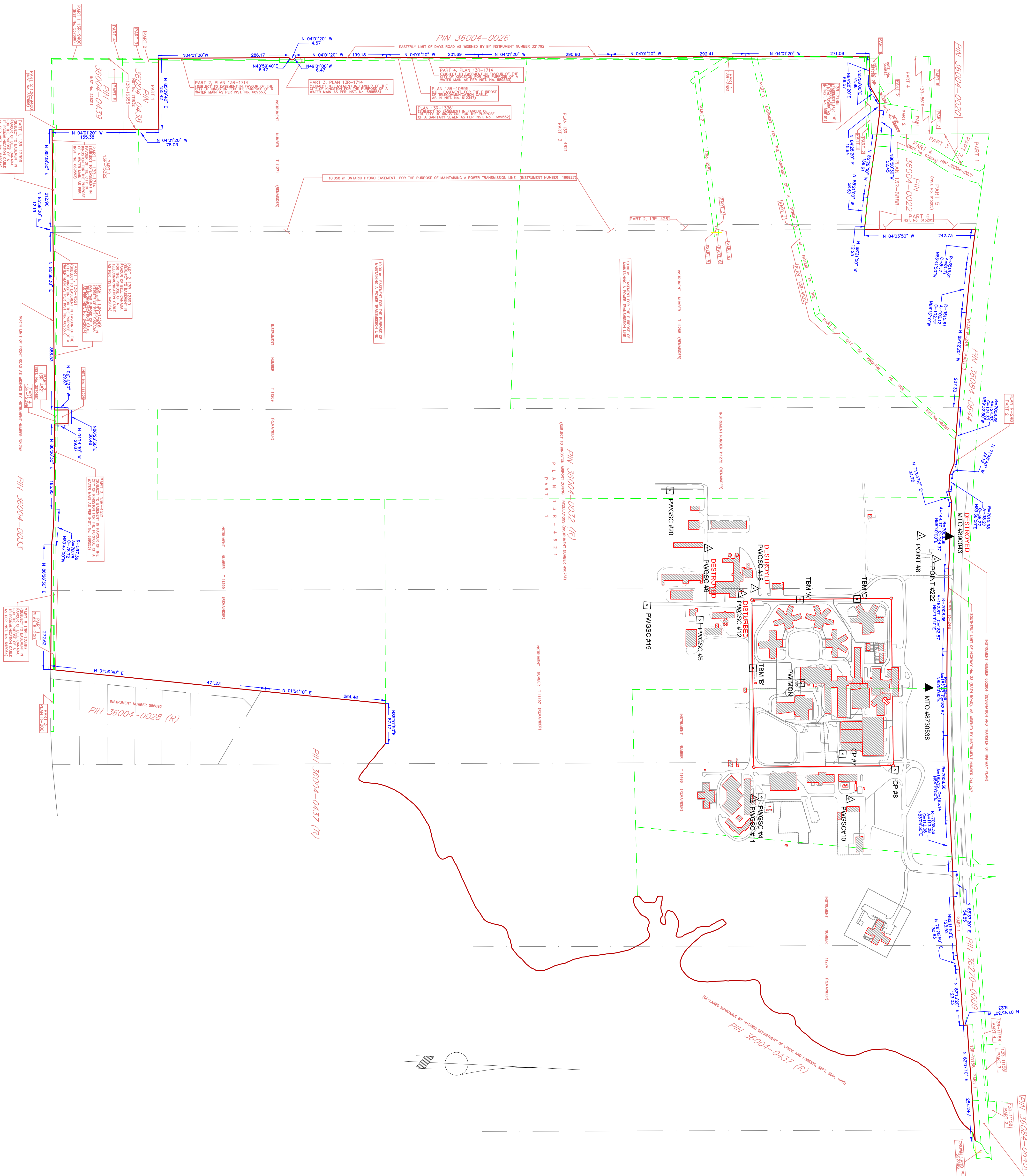
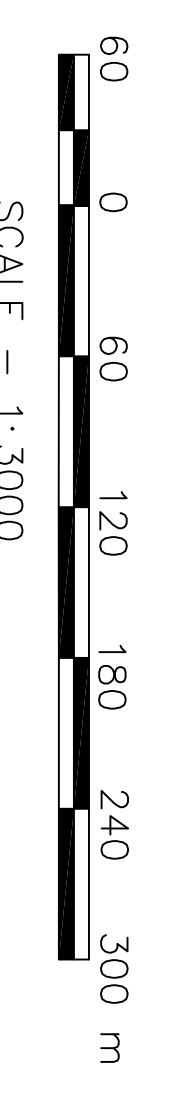
ENRANCE SIGNAGE PLAN AND
IN MATERS AND CAN BE CONVERTED TO
FEET BY DIVIDING BY 0.3048.

No.	DATE	REVISIONS
1	NOV 2013	ISSUE FOR PERMITTING AND RECORDING
2	JUNE 2015	REVISED PER CITY OF KINGSTON AND FRONTENAC INSTITUTE COMMENTS

Project Title:
 COLLINS BAY
 ONTARIO
 CORRECTIONAL SERVICE CANADA
 COLLINS BAY / FRONTENAC INSTITUTION
CONTROL MONUMENTS

designed by:
 J.S. / RW
checked by:
 P. Goldt, O.L.S.
approved by:
 P. Goldt, O.L.S.
project date:
 2015-05-05
project no.:
 R070263.001
drawing no.:
 11-1

SCALE - 1:3000



SITE SUB CONTROL MONUMENT LEGEND
 ▲ HORIZONTAL CONTROL MONUMENT
 □ VERTICAL CONTROL MONUMENT

PUBLISHED CONTROL MONUMENT REFER TO KEY PLAN FOR APPROXIMATE LOCATION

MONUMENT (2ND ORDER)	NORTHING	EASTING	ELEVATION(M)
HORIZONTAL 00819730538	4 899 107.479	375 921.245	
HORIZONTAL 00819890041	4 899 176.396	374 777.061	
HORIZONTAL 00819890042	4 899 204.931	375 163.390	
DESTROYED 00819890043	4 899 156.101	376 596.281	
00919733979	4 899 204.176	376 177.945	
00919733980	4 899 204.176	376 177.945	
01019900201	4 897 142.573	375 518.941	
01019900202	4 897 169.778	376 428.524	
VERTICAL (1ST ORDER) 00119684326	4 899 508.xxx	374 808.xxx	91.637
00119674192	4 899 494.xxx	376 545.xxx	78.073
00119824093	4 897 562.xxx	376 524.xxx	85.576
00119674194	4 897 028.xxx	375 382.xxx	83.576
001192002214	4 897 244.xxx	376 985.xxx	75.962

NOTES: ALL COORDINATES FOR THIS PLAN ARE REFERENCED TO THE UTM NORTH AMERICAN NAD 27 DATUM, 1974 ADJUSTMENT ZONE 18. ELEVATIONS ARE GEODETIC AND ARE BASED ON THE CANADIAN GEODETIC VERTICAL DATUM 1928(CGVD 28):1978

SITE SUB CONTROL (4TH ORDER) MONUMENTATION:

COLLINS BAY INSTITUTION LABEL	NORTHING	EASTING	ELEVATION(M)
CP #7			84.333
CP #8			84.246
TM 'A'			84.976
TM 'B'			83.605
TM 'C'			84.333
PW MON			85.330
FRONTENAC INSTITUTION PWGSC #11	4 898 735.277	376 181.619	81.938
DESTROYED PWGSC #12	4 898 687.564	375 734.794	84.596
DESTROYED PWGSC #18	4 898 713.716	375 722.646	81.029
PWGSC #4			85.171
PWGSC #5			82.171
PWGSC #19			83.187
PWGSC #20			84.104
DESTROYED PWGSC #6	4 898 607.538	375 639.544	85.553
DESTROYED PWGSC #10	4 898 944.021	376 173.013	80.169
DESTROYED POINT #8	4 899 071.23	375 589.48	80.169
DESTROYED POINT #222	4 899 106.235	375 639.544	80.169

NOTES: HORIZONTAL SURVEY CONTROL NETWORK REFERRED TO NAD 27 DATUM, 1974 ADJUSTMENT VERTICAL SURVEY CONTROL NETWORK REFERRED TO CGD28 (CANADIAN GEODETIC DATUM OF 1928), 1978 SOUTHERN ONTARIO ADJUSTMENT

PUBLISHED CONTROL MONUMENT LEGEND
 ▲ HORIZONTAL CONTROL MONUMENT
 □ VERTICAL CONTROL MONUMENT

KEY PLAN SHOWING APPROXIMATE LOCATION OF CONTROL MONUMENTS

