

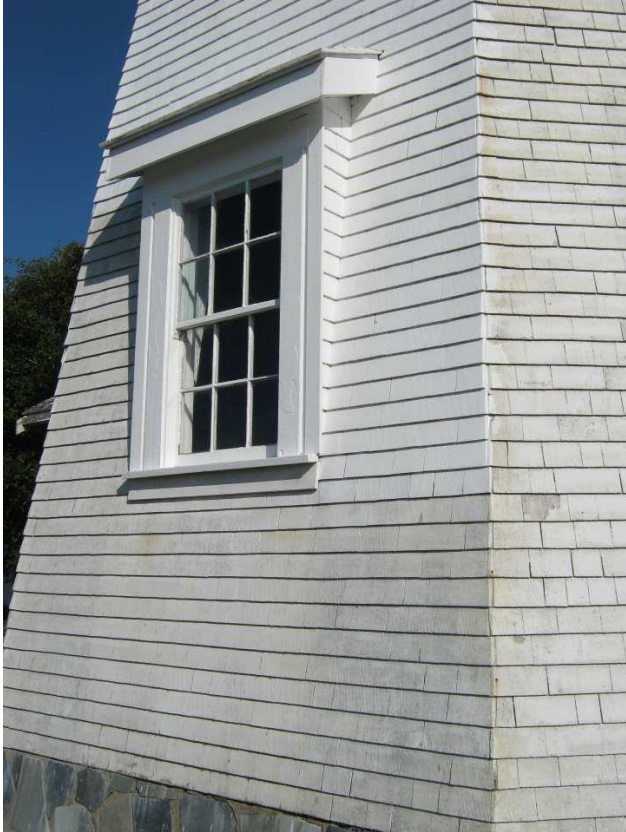
Pachena Light Tower Photos - WSP Inspection Trip Aug 2014



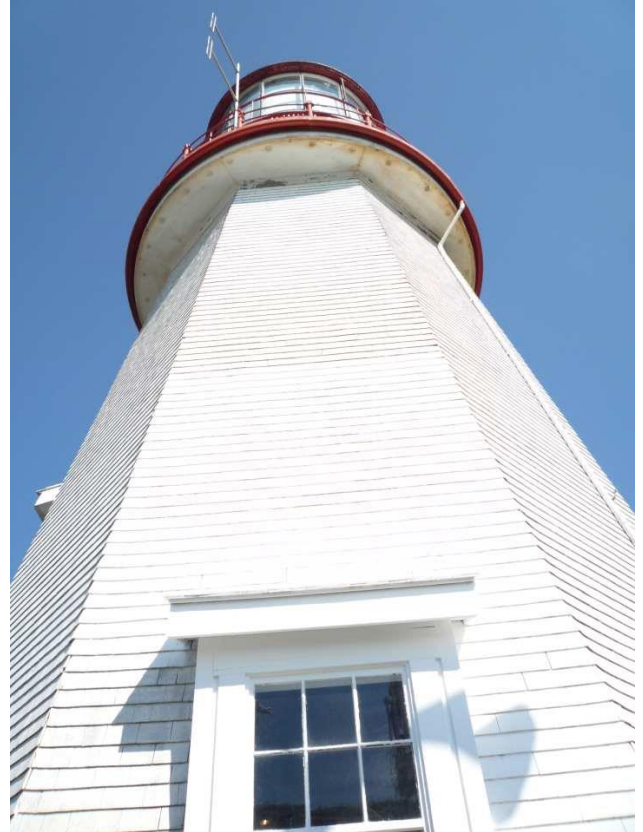
#1 - North Exterior Wall Elevation



#2 - East Exterior Wall Elevation



#3 - South Exterior Wall Elevation (Lower)

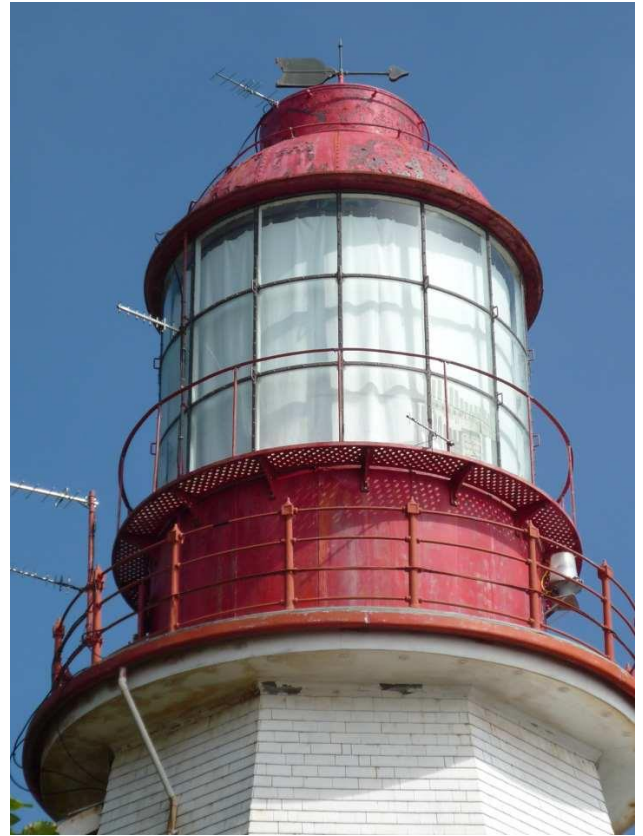


#4 - South Exterior Wall Elevation (Upper)

Pachena Light Tower Photos - WSP Inspection Trip Aug 2014



#5 - West Exterior Wall Elevation



#6 - Lantern Room Exterior



#7 - Stone Veneer North Wall



#8 - Stone Veneer South Wall

Pachena Light Tower Photos - WSP Inspection Trip Aug 2014



#9 - Exterior Entrance Stair



#10 - Foundation Soil Bearing Condition



#11 - Foundation Crack - East Wall



#12 - Foundation Crack - South Wall

Pachena Light Tower Photos - WSP Inspection Trip Aug 2014



#13 - Foundation Crack - West Wall



#14 - Anchor Bolt - Corroded



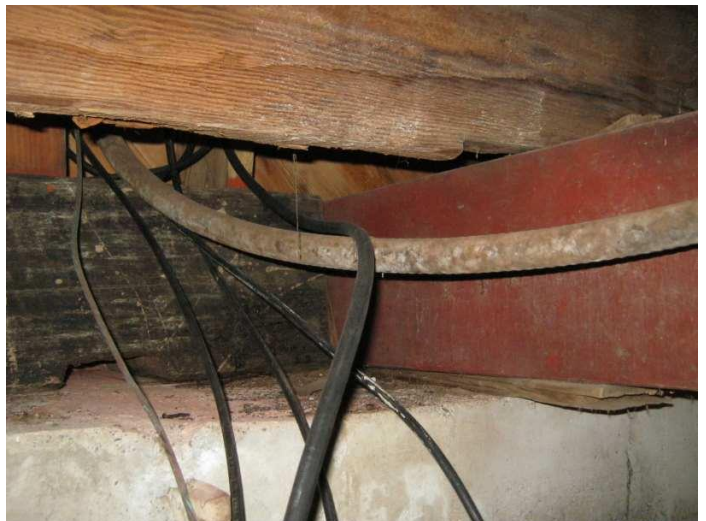
#15 - Anchor Bolt - Corroded



#16 - Anchor Bolt - Missing Plate Washer



#17 - Bottom Wall Plate - Fire Damage



#18 - Bottom Wall Plate - Fire Damage

Pachena Light Tower Photos - WSP Inspection Trip Aug 2014



#19 - Main Floor Joist Failed



#20 - Main Floor Joist Connection Failed



#21 - Main Floor Bridging Missing



#22 - Main Floor Joist Bridging Deterioration



#23 - Main Floor Beam Replaced – Northeast



#24 - Main Floor Beam Replaced - Northwest

Pachena Light Tower Photos - WSP Inspection Trip Aug 2014



#25 - Main Floor Beam Replaced - Southeast



#26 - Main Floor Joist Repair - South



#27 - South Wall Plate Replaced - East End



#28 - South Wall Plate Replaced - Centre



#29 - South Wall Plate Replaced - West End



#30 - Interior Wood Column at Base Southwest  
- Original Construction

Pachena Light Tower Photos - WSP Inspection Trip Aug 2014



#31 - Interior Wood Column at Base Southeast - Repaired



#32 - Interior Wood Column at Base Northwest - Repaired



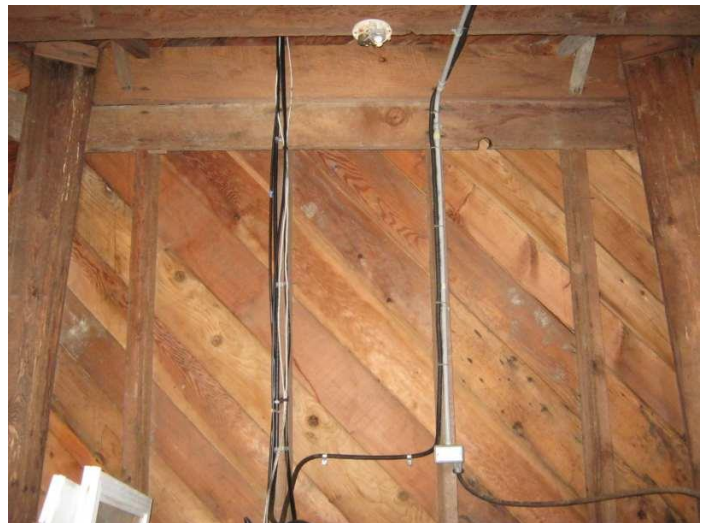
#33 - Interior Wood Column at Base Northeast - Repaired



#34 - Main Floor Typical Wall Framing



#35 - Main Floor Typical Wall Framing



#36 - Main Floor Typical Wall Framing

Pachena Light Tower Photos - WSP Inspection Trip Aug 2014



#37 - 2nd Floor Framing



#38 - 2nd Floor Framing



#39 - 2nd Floor Framing



#40 - 2nd Floor Framing



Pachena Light Tower Photos - WSP Inspection Trip Aug 2014



#41 - 2nd Floor Wall Framing



#42 - 2<sup>nd</sup> Floor Wall Framing



#43 - 3rd Floor Framing



#44 - 3rd Floor Framing

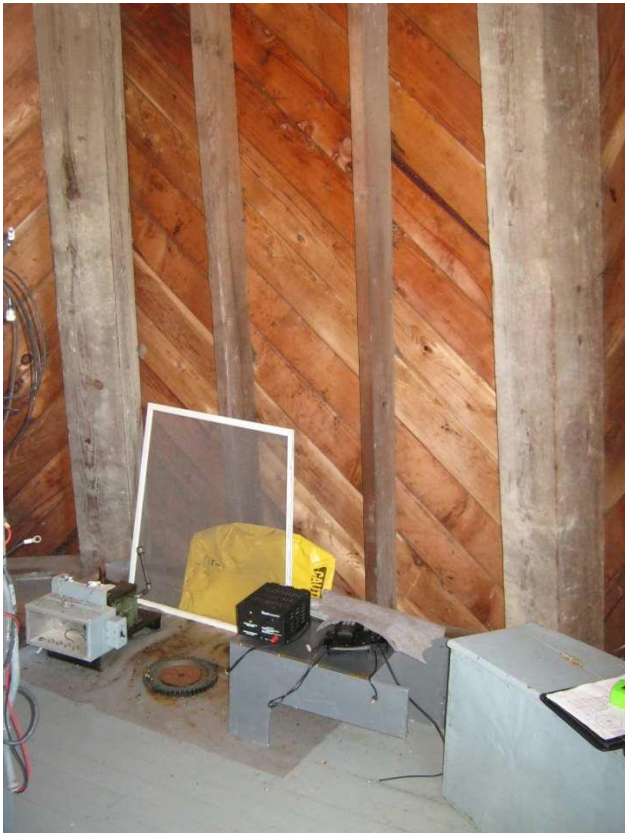
Pachena Light Tower Photos - WSP Inspection Trip Aug 2014



#45 - 3rd Floor Framing



#46 - 3rd Floor Framing



#47 - 3rd Floor Wall Framing

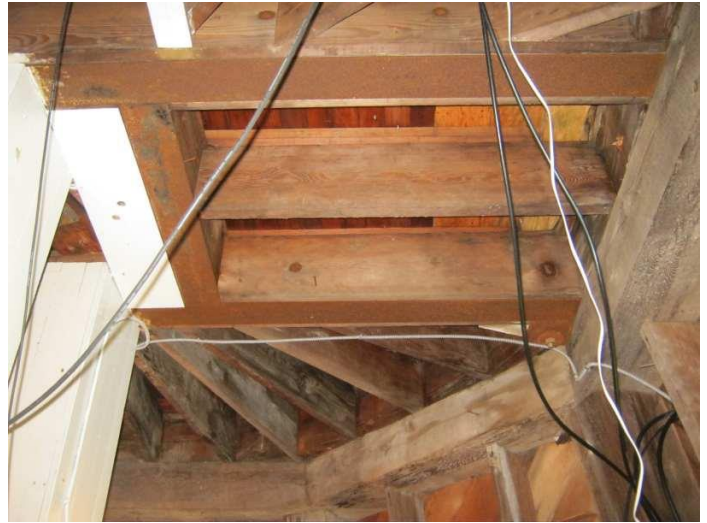


#48 - 3rd Floor Wall Framing

Pachena Light Tower Photos - WSP Inspection Trip Aug 2014



#49 - 4th Floor Framing



#50 - 4th Floor Framing



#51 - 4th Floor Framing



#52 - 4th Floor Framing



#53 - 4th Floor Framing



#54 - 4th Floor Framing

Pachena Light Tower Photos - WSP Inspection Trip Aug 2014



#55 - Lantern Room Anchor to 4th Floor



#56 - Lantern Room Anchor to 4th Floor



#57 - Lantern Room Interior Wall Assembly

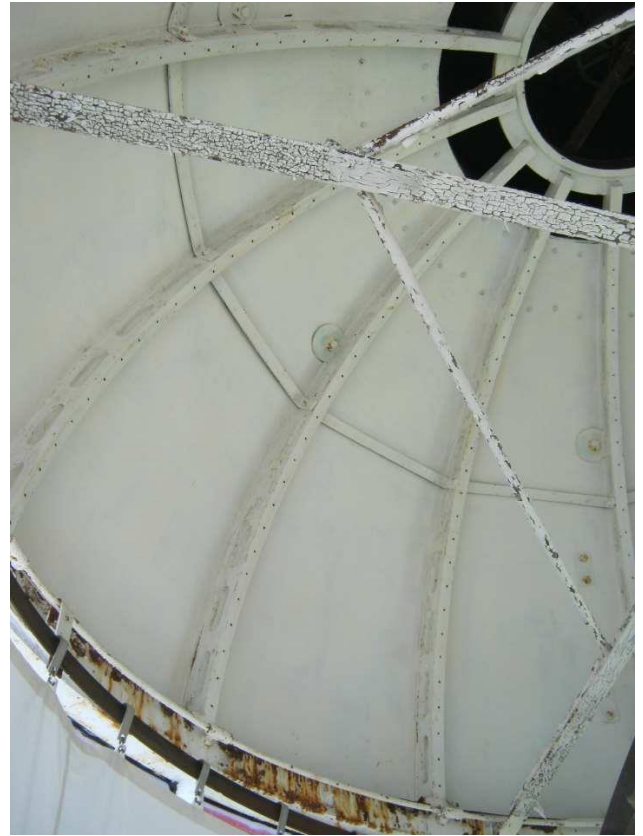


#58 - Lantern Room Interior Platform

Pachena Light Tower Photos - WSP Inspection Trip Aug 2014



#59 - Lantern Room Roof Framing

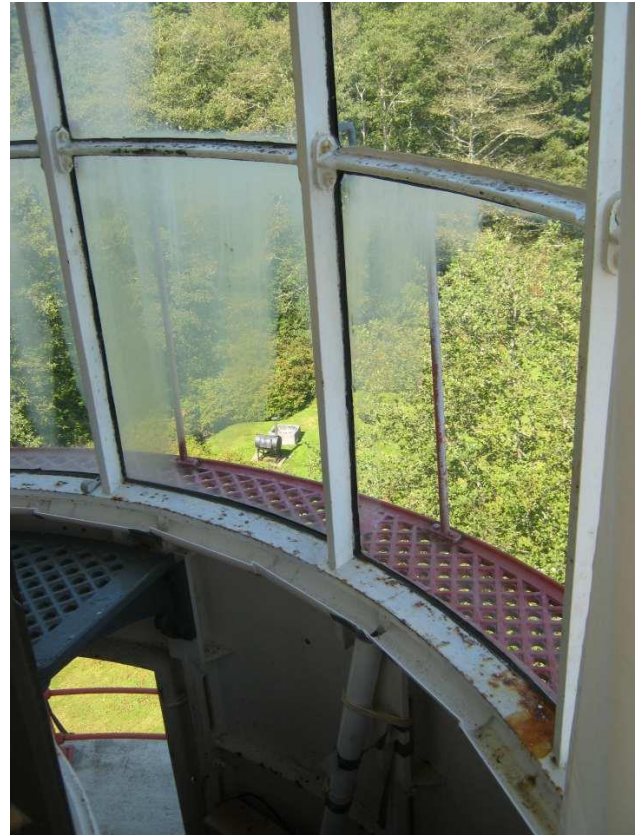


#60 - Lantern Room Roof Framing

Pachena Light Tower Photos - WSP Inspection Trip Aug 2014

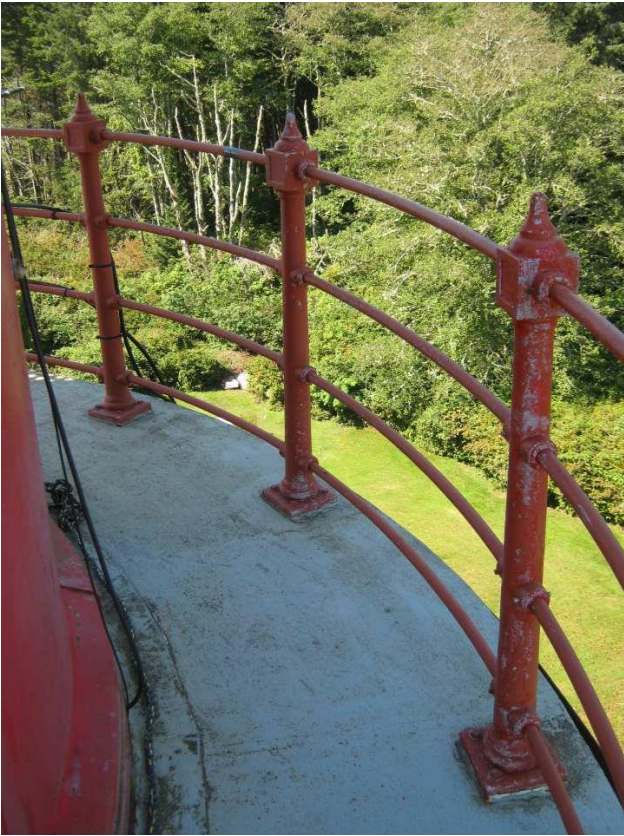


#61 - Lantern Room Window at Top

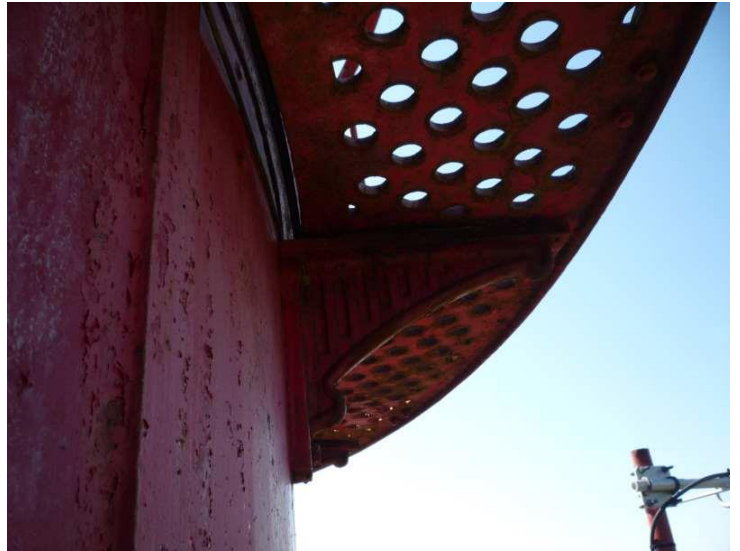


#62 - Lantern Room Window at Bottom

Pachena Light Tower Photos - WSP Inspection Trip Aug 2014



#63 - Lantern Room Exterior Balcony



#64 - Lantern Room Exterior Platform



#65 - Lantern Room Window - Exterior



#66 - Lantern House Wall Panel – Crack

Pachena Light Tower Photos - WSP Inspection Trip Aug 2014



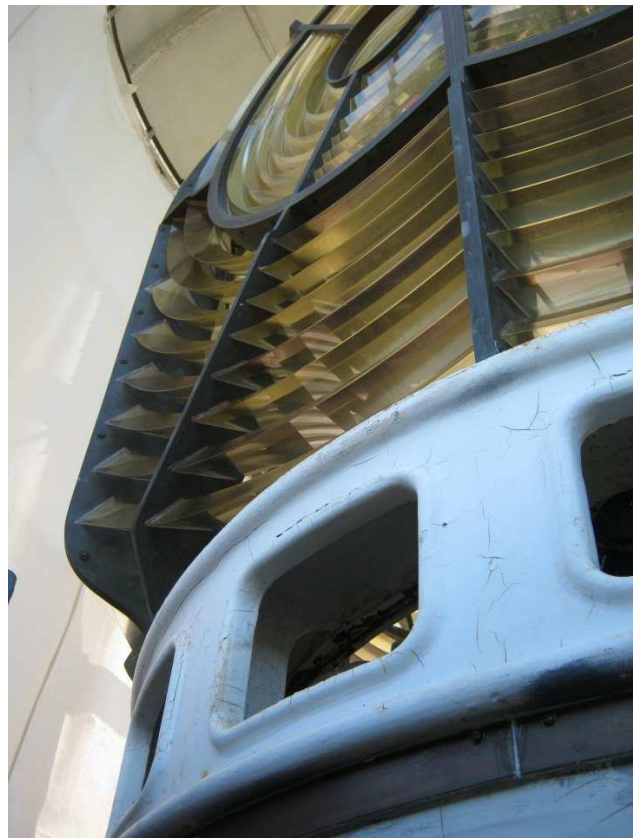
#67 - Lens Pedestal Base



#68 - Lens Pedestal



#69 - Lens Pedestal



#70 - Lens Pedestal



Pachena Light Tower Photos - WSP Inspection Trip Aug 2014



#71 - Fresnel Lens Exterior



#72 - Fresnel Lens Interior



#73 - Foundation Soil Bearing Condition