

SKETCH TO ILLUSTRATE PROPERTY LIMITS AT MILLHAVEN AND BATH INSTITUTES BEING PART OF LOTS 14, 15, 16, 17 AND 18, BROKEN FRONT CONCESSION AND PART OF LOTS 14, 15, 16 AND 17, CONCESSION 1, AND PART OF THE ROAD ALLOWANCE BETWEEN THE BROKEN FRONT CONCESSION AND CONCESSION GEOGRAPHIC TOWNSHIP OF ERNESTOWN, NOW IN LOYALIST TOWNSHIP COUNTY OF LENNOX AND ADDINGTON

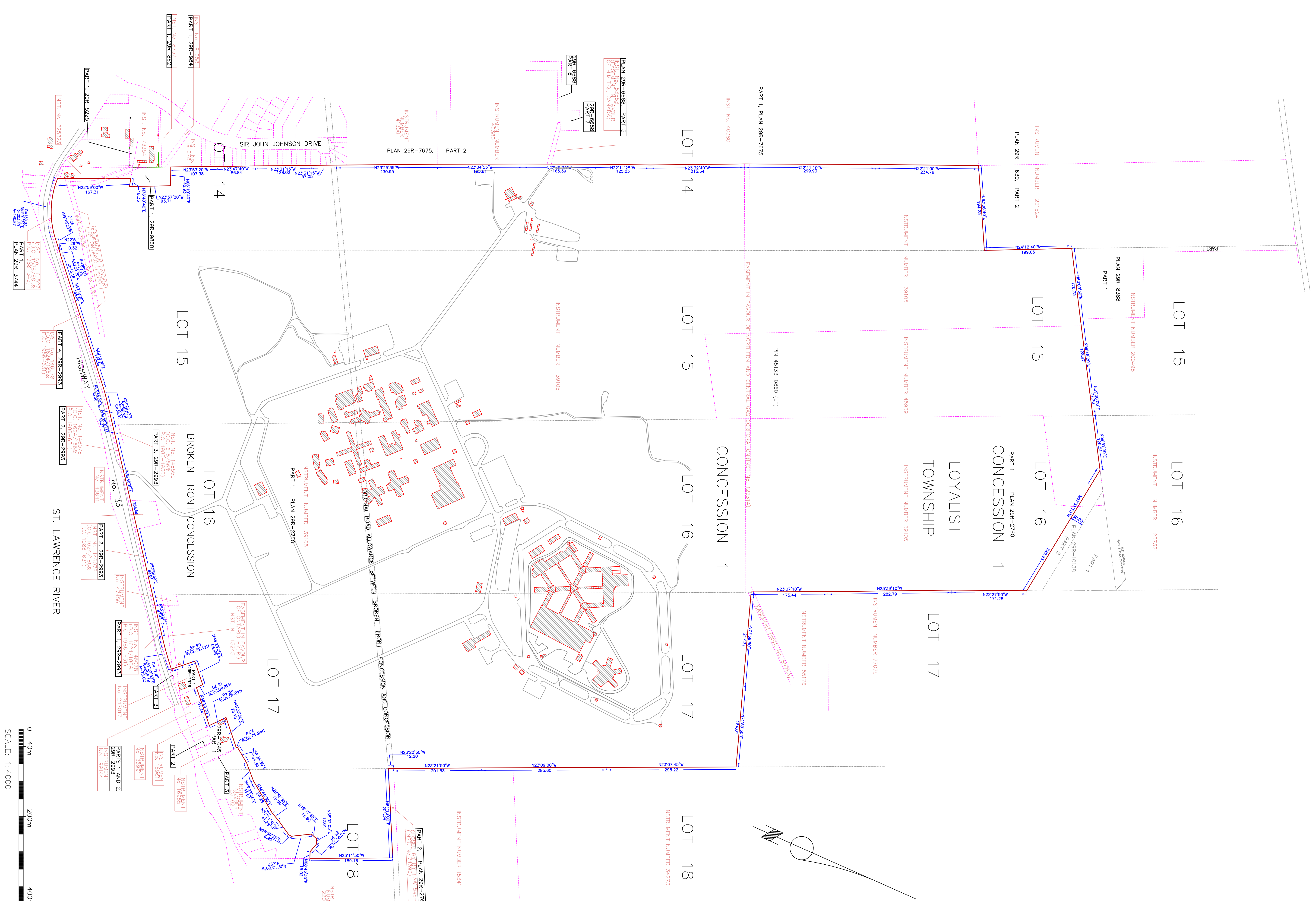
Table with columns: No., Date, Approved, Remarks. Contains survey data points and notes regarding boundary information and ground distances.

NOTES: THE BOUNDARY INFORMATION HAS BEEN COMPARED TO THE 2007-12-31 AERIAL PHOTOGRAPHY AND THE 2007-12-31 AERIAL PHOTOGRAPHY HAS BEEN FOUND TO BE ACCURATE. THE BATH CORRECTIVE SERVICE CANADA MILLHAVEN AND BATH INSTITUTIONS

BOUNDARY SURVEY PLAN 310304

DATE OF PROJECT: 2007-12-31

310304



DESCRIPTION table with columns: Full Description of CSC Real Property Interests, Part of the Road Allowance between Broken Front Concession and Concession 1, and Part of Lots 14, 15, 16, 17.

SCHEDULE table with columns: Lot, Cont./Plan, Instrument Number(s), Area (sq), Remarks. Lists details for lots 14, 15, and 16.