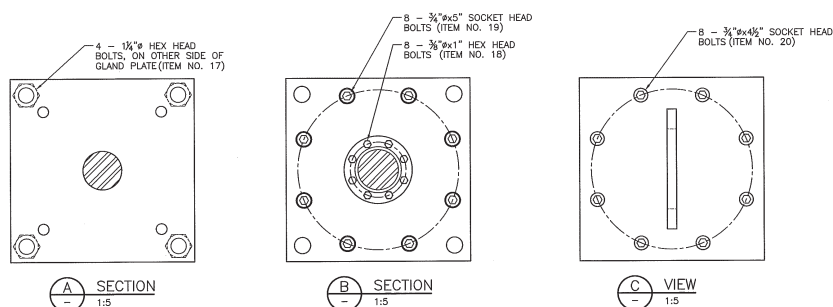


CYLINDER DATA	
BARREL:	279.40 O.D. x 254.00 I.D.
ROD:	76.17#
STROKE:	2127
DESIGN PRESSURE:	140 BAR

GENERAL ARRANGEMENT - PENSTOCK CYLINDER
1:5



BILL OF MATERIALS			
ITEM NO.	ITEM	DESCRIPTION	QUANTITY
1	BARREL	SEE SHEET 2	1
2	ROD	SEE SHEET 2	1
3	GLAND	SEE SHEET 3	1
4	GLAND CAP	SEE SHEET 3	1
5	END CAP	SEE SHEET 3	1
6	PISTON	SEE SHEET 3	1
7	O-RING	2-230 N70	1
8	BRONZE BEARING	222.73 O.D. x 222.25 I.D.	1
9	GRUB SET SCREW	3/8" NC	1
10	PISTON SEAL	254.00 O.D. x 228.60 I.D. CHEVRON TYPE PACKING	AS REQ
11	RETAINER	2-230 N70	1
12	SEAL RETAINER	SA 660 BRONZE SEAL RETAINER	1
13	BRONZE BEARING	92.25 O.D. x 77.47 I.D.	1
14	SEAL	10-92.25 O.D. x 77.47 I.D. CHEVRON TYPE PACKING	AS REQ
15	WIPER SEAL	76.20 AN-29	1
16	O-RING	2-208 N70	1
17	BOLTS	1/2" 4-24 NC S.S.	1
18	HEX BOLTS	3/8" 1" NC (SAFETY WIRE AFTER INSTALL)	8
19	SOCKET HEAD BOLTS	3/8" 6-6" NC S.S.	8
20	SOCKET HEAD BOLTS	3/8" 6-6" NC S.S.	8
21	HEX BOLTS	3/8" 2-24 NC S.S.	4
22	WASHERS	3/8" 6" SAF S.S. FLAT HARD WASHERS	8
23	NUTS	3/8" NC S.S. NUTS	16
24	NUTS	3/8" 6" 1/2" S.S. NUTS	8

NOTE:
DIMENSIONS SHOWN ARE NOMINAL. SUPPLIER SHALL DETERMINE TOLERANCES AND SURFACE FINISHES REQUIRED TO ACHIEVE PERFORMANCE REQUIREMENTS INDICATED IN SPECIFICATIONS AND TO INDICATE AS REQUIRED ON SHOP DRAWINGS



5		
4		
3		
2	REVIEWED FOR TENDER	20160510
1	ISSUED FOR TENDER	20160604
0	ISSUED FOR REVIEW	20160611
Revision	Description/Description	Date/Date

ESQUIMALT GRAVING DOCK
825 ADMIRALS ROAD
ESQUIMALT, B.C., V8A 2P1

Project title/Titre du projet

PENSTOCK CYLINDER REPLACEMENT

Consultant Signature Only

Designed by/Conçue par
KUMMCS/TMW

Drawn by/Dessiné par
PHU JUNEYB

Project Manager/Manager/Administrateur de Projet: JPSDC
JON SIKKA

Engineer Manager/Architectural and Engineering Services
Ingénieur diplômé, Services d'ingénierie et de génie, 19950

Project Manager/Manager/Administrateur de Projet: JPSDC
Frederick Paul

Drawing title/Titre du dessin

GENERAL ARRANGEMENT

Project No./No. du projet R.016116.098	Sheet/Faute 01 OF 3	Revision 2
---	---------------------------	---------------