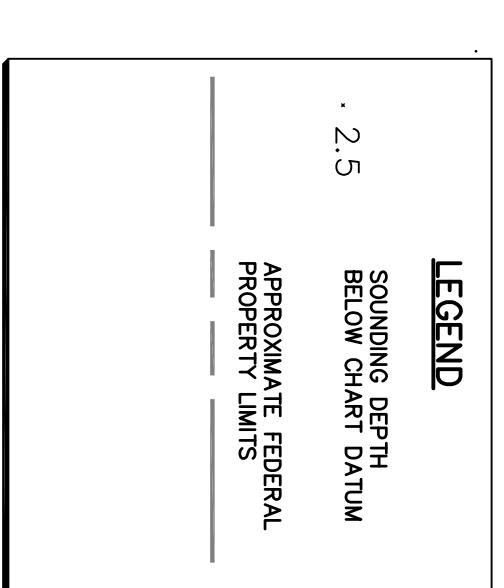


SMALL CRAFT HARBOURS
 CENTRAL AND ARCTIC REGION

- NOTES:
1. ALL SOUNDINGS & ELEVATIONS IN METRES
 2. COORDINATES FOR HORIZONTAL CONTROL ARE THE NAD83 DATUM OF 1983 (NAD83)
 3. ELEVATIONS ARE GIVEN USING THE CANADIAN VERTICAL GEODETIC DATUM OF 1927 (CV927)



REVISIONS:

NO.	DATE	DESCRIPTION
A	ISSUED FOR REVIEW	20150716 DW
B	ISSUED FOR TENDER	20150730 DW

PROJECT:
 VARIES

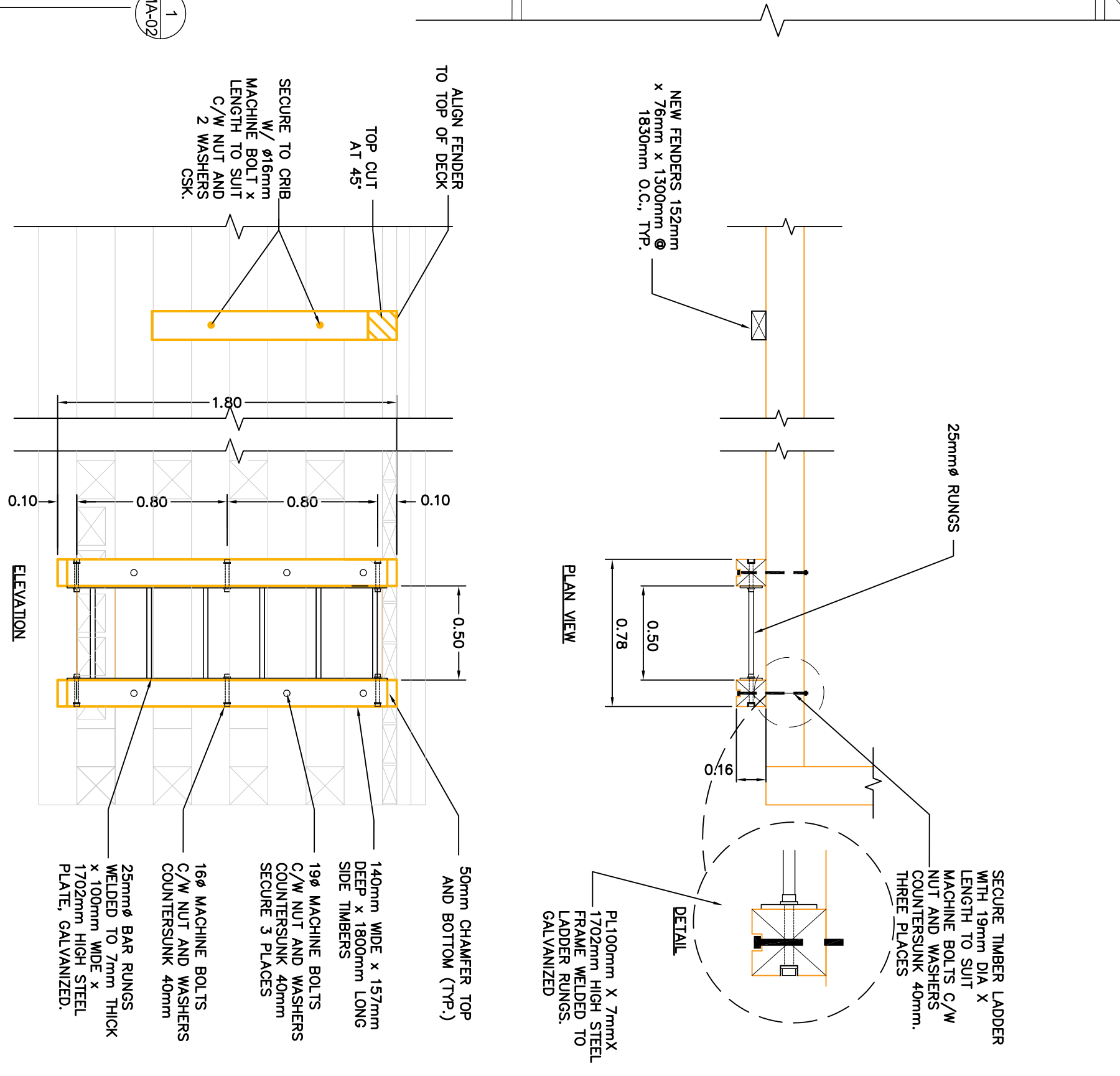
DESCRIPTION:
 PROPOSED TIMBER WHARF
 PLANS AND SECTIONS

DRAWN: D.W. APPROVED: _____

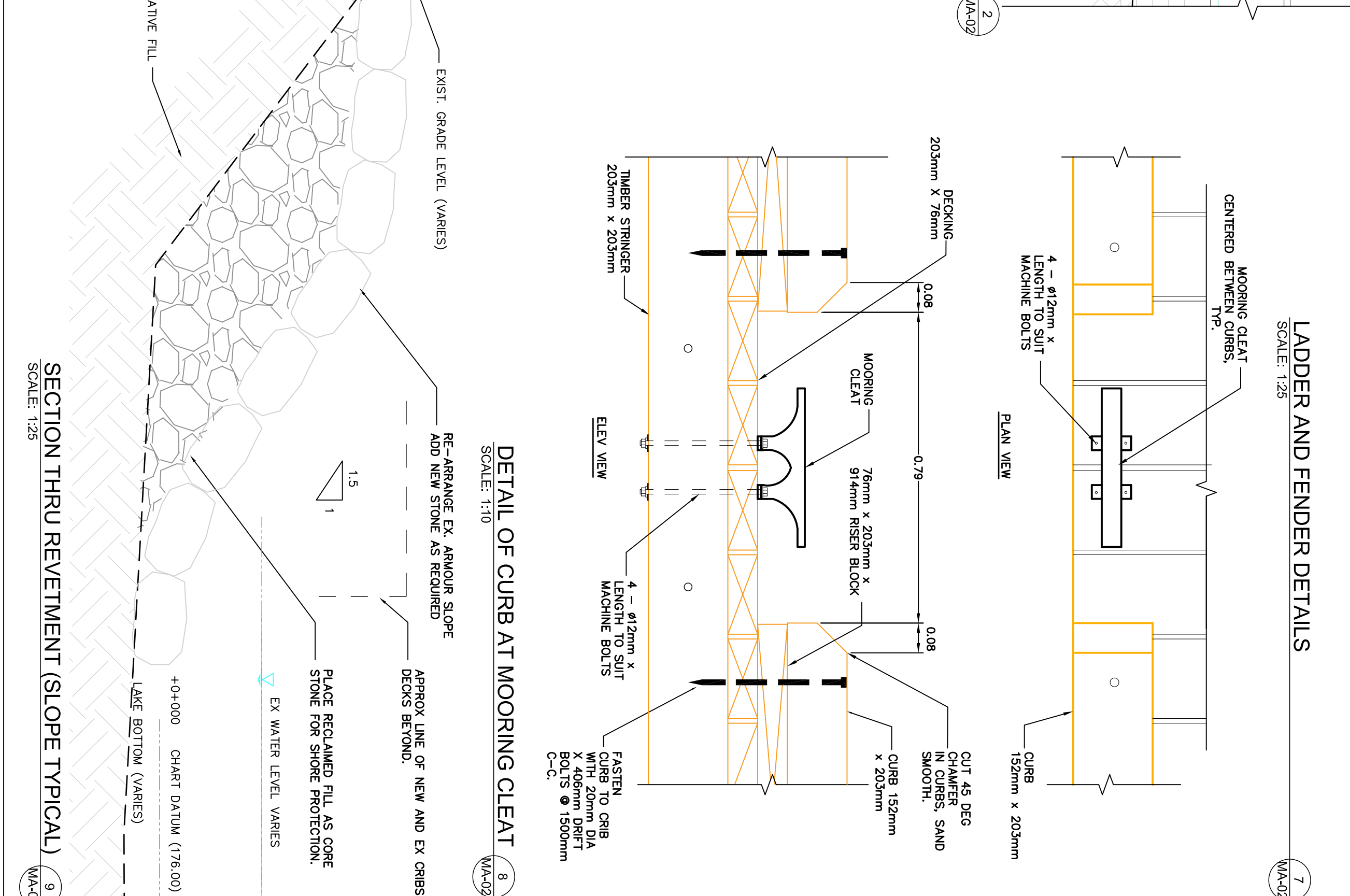
DATE: JUNE 2015 DATE: _____

LOCATION: WHITE CLOUD ISLAND, ON

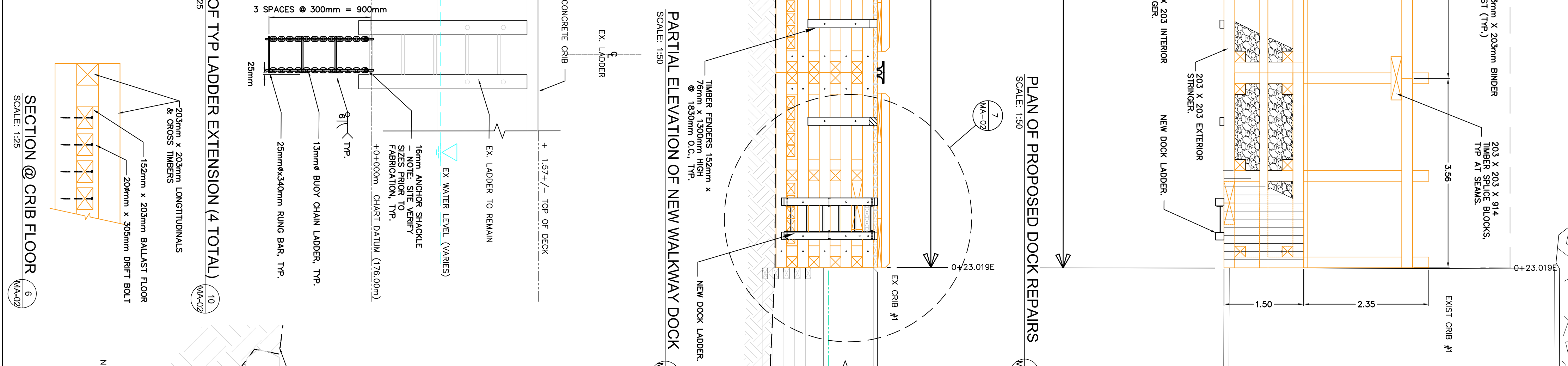
DRAWING NO: MA-02 LOCATOR CODE: 4815



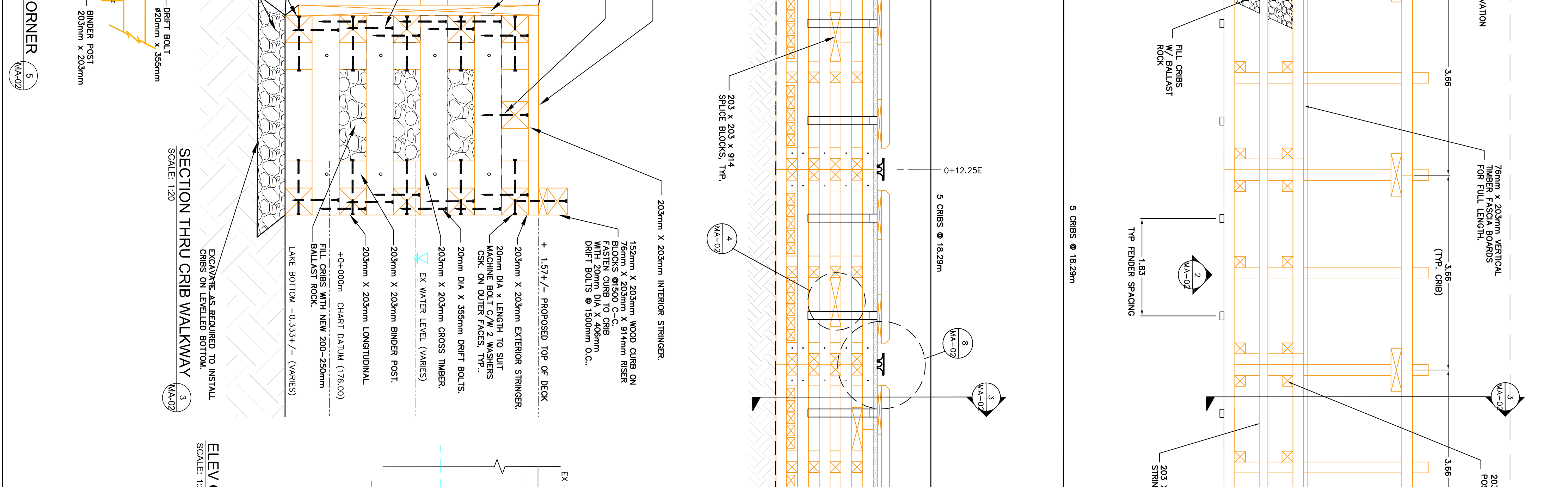
LADDER AND FENDER DETAILS
 SCALE: 1:25



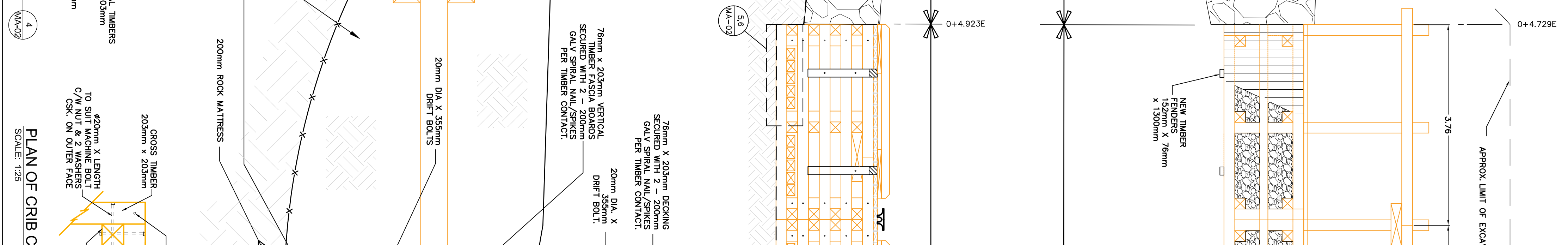
DETAIL OF CURB AT MOORING CLEAT
 SCALE: 1:10



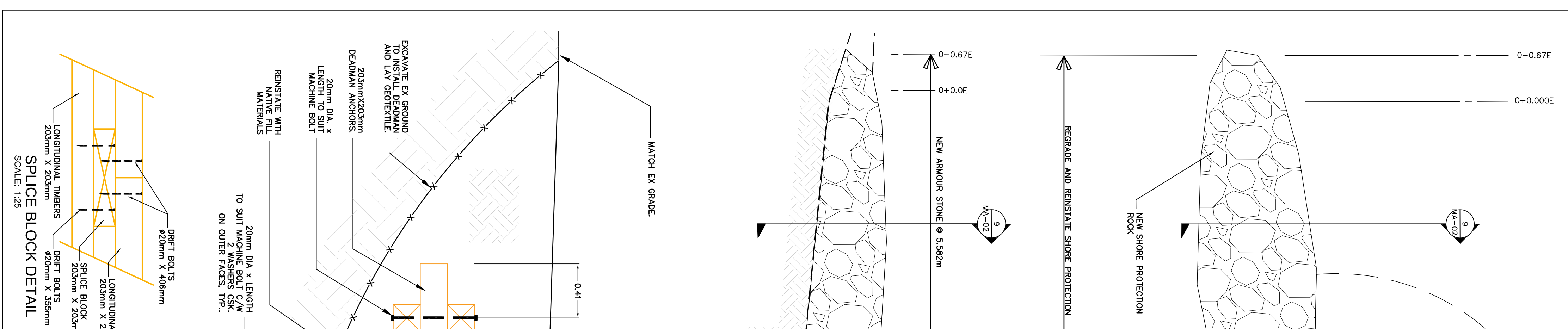
PLAN OF PROPOSED DOCK REPAIRS
 SCALE: 1:50



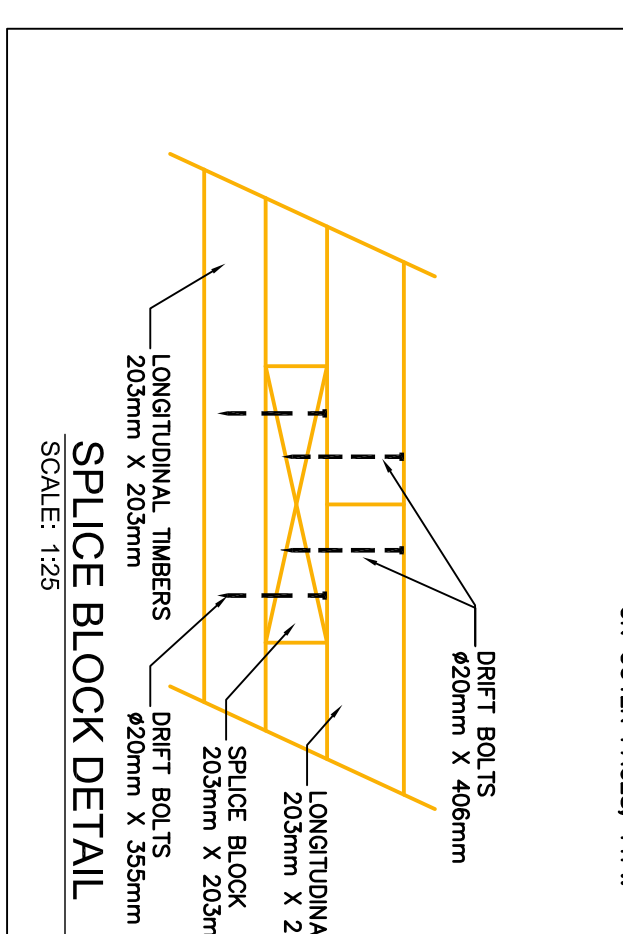
SECTION THRU CRIB WALKWAY
 SCALE: 1:20



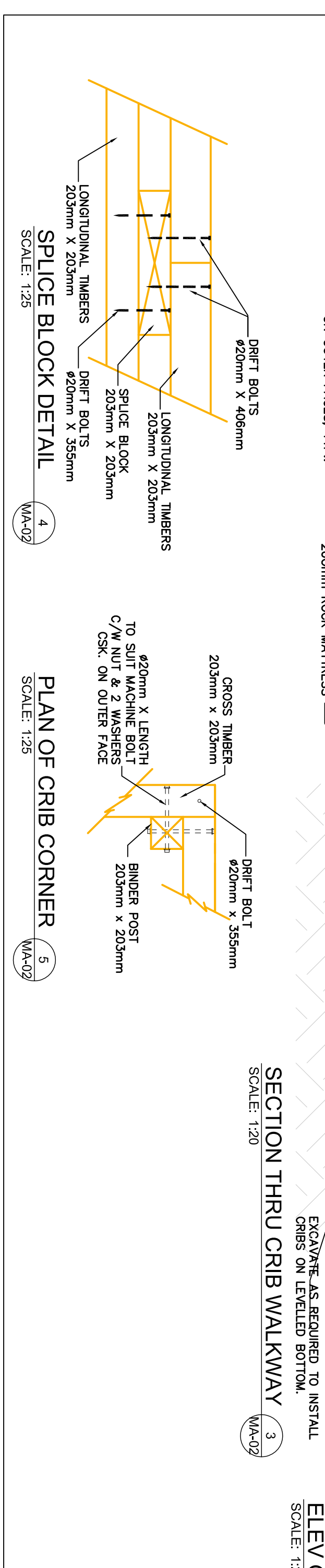
PLAN OF CRIB CORNER
 SCALE: 1:25



SECTION THRU REVETMENT (SLOPE TYPICAL)
 SCALE: 1:25



SPLICE BLOCK DETAIL
 SCALE: 1:25



SECTION THRU CRIB CORNER
 SCALE: 1:25