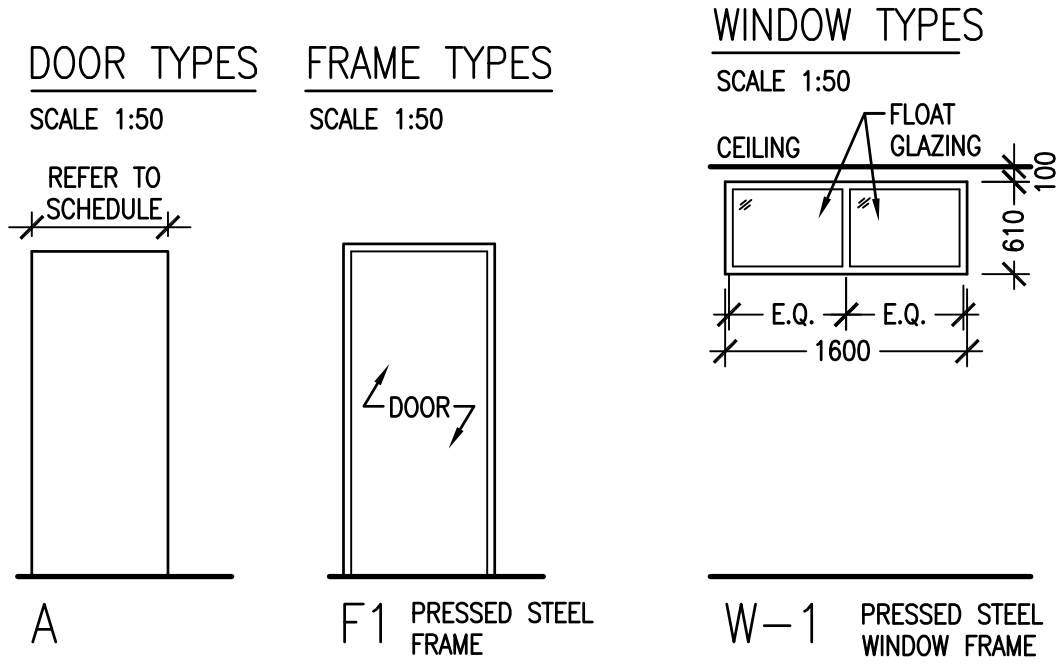


# DRAWING LEGEND

A1.0 LARGE SCALE FLOOR PLANS, SCHEDULES  
A1.1 SECOND FLOOR PLAN

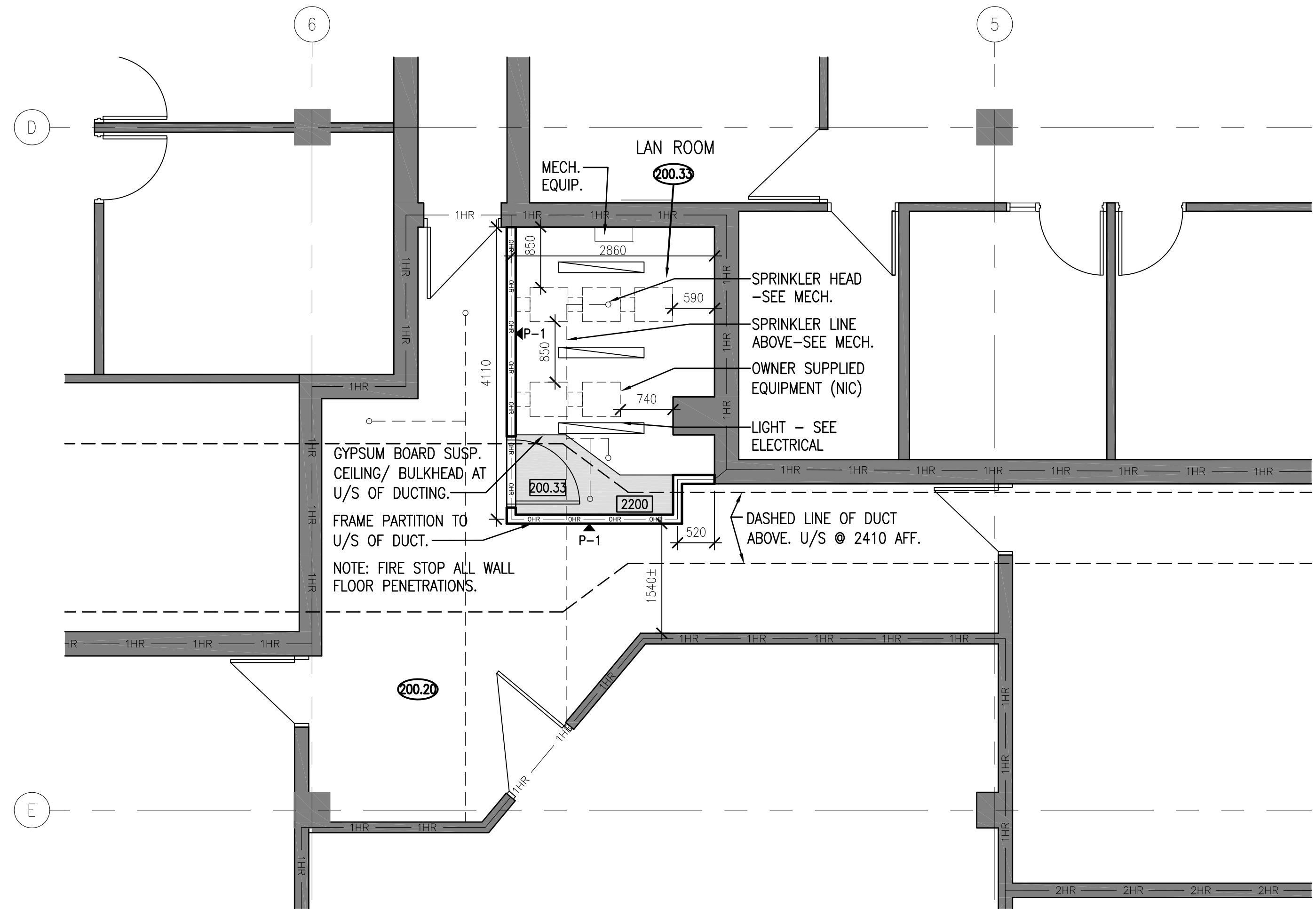
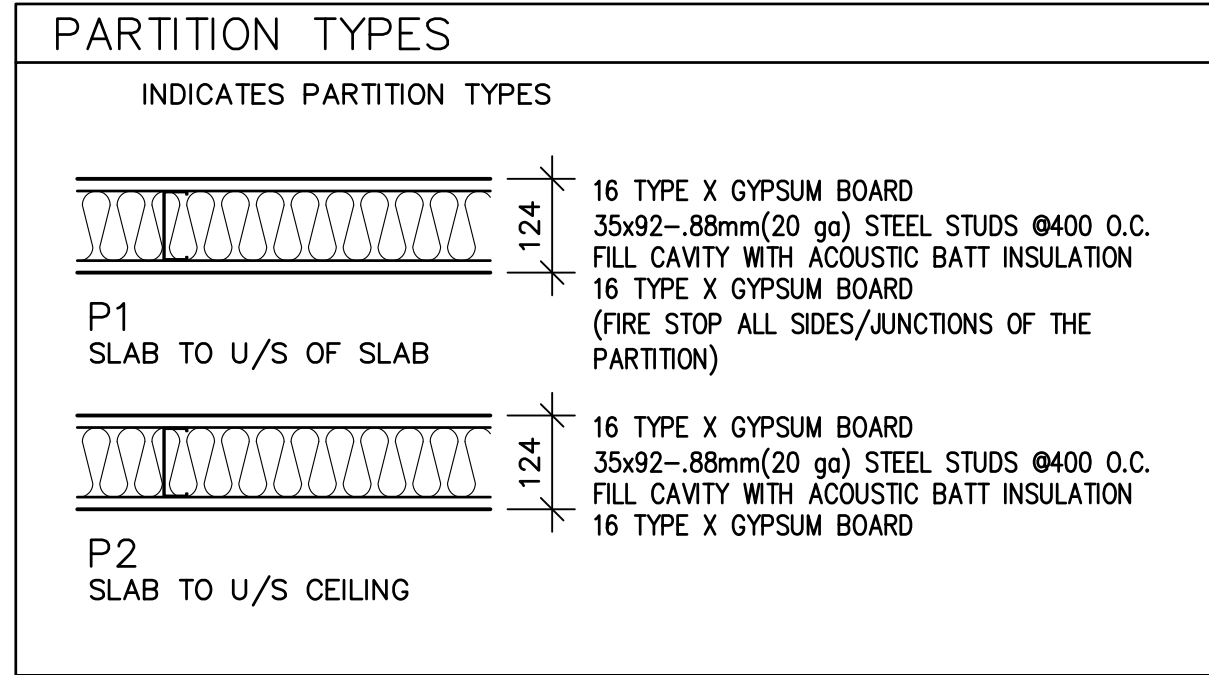
M1.0 FLOOR PLAN, EQUIPMENT SCHEDULE

E1.0 LOWER LEVEL, PANEL LOCATIONS, MECHANICAL PROVISIONS  
E1.1 MAIN FLOOR, POWER & SYSTEM PLAN  
E1.2 SECOND FLOOR, NEW DATA PLAN  
E1.3 SECOND FLOOR, POWER & SYSTEMS PLAN, GENERAL OFFICE  
E1.4 SECOND FLOOR, POWER & SYSTEMS PLAN, LAN ROOM LAYOUTS  
E2.1 PANEL SCHEMATICS  
E3.1 SECOND FLOOR SECURITY DETAILS

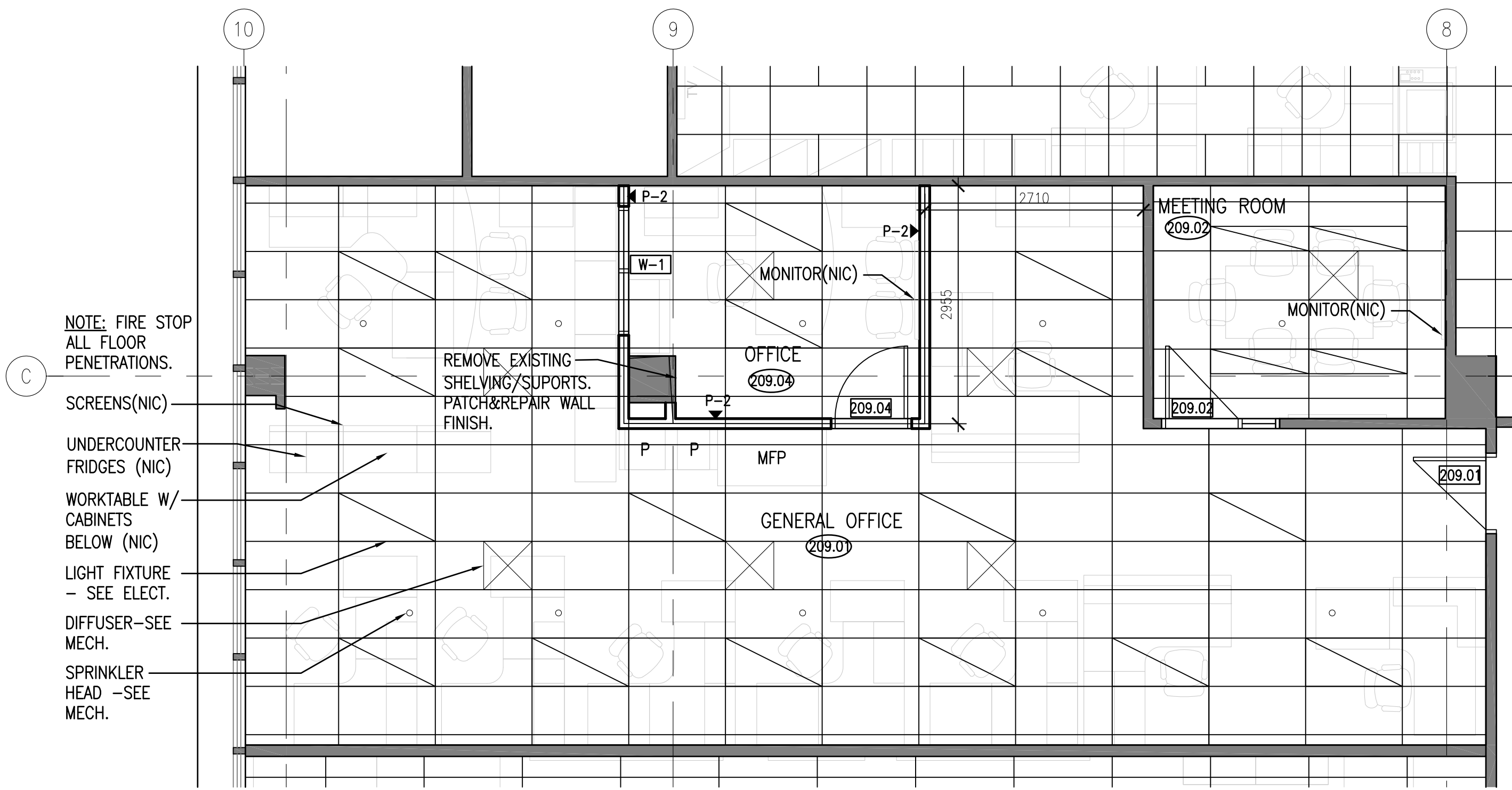


ROOM FINISH SCHEDULE											LEGEND		
REFER TO DRAWINGS FOR EXTENT OF FINISHES											CAR	EXISTING CARPET TILE	
ROOM No.	ROOM NAME	FLOOR	BASE				WALLS				CEILING		
			N	S	E	W	N	S	E	W			
209.01	GENERAL OFFICE	CAR	RB	RB	RB	RB	PT-F	PT-F	PT-F	PT-A	ESC-METRIC SIZE	PT-A	PAINT (ACCENT) - MATCH EXISTING
209.02	MEETING ROOM	CAR	RB	RB	RB	RB	PT-F	PT-F	PT-F	PT-A	ESC-IMPERIAL SIZE	ESC	EXISTING SUSPENDED CEILING
209.04	OFFICE	CAR	RB	RB	RB	RB	PT-F	PT-F	PT-F	PT-A	ESC-METRIC SIZE	EXP	EXPOSED STRUCTURE
200.33	LAN ROOM	SDT	RB*	RB	RB*	RB	PT-F*	PT-F*	PT-F*	PT-F*	EXP	SDT	STATIC DISSIPATIVE VINYL TILE
												*	BOTH SIDES OF THE WALL

DOOR, FRAME, AND HARDWARE SCHEDULE											LEGEND		
DOOR NO.	ROOM NAME	DOOR SIZE (WxH)	TYPE	MAT'L	FIN	FRAME TYPE	MAT'L	FIN	HRDWR GROUP	GLASS	REMARKS		
209.01	GENERAL OFFICE	900 x 2150	A	SW	SV	F1	PS	PT	209.01	-		HM	HOLLOW METAL DOOR
209.02	MEETING ROOM	900 x 2150	EX	EX	EX	EX	EX	EX	-	-		PT	PAINT
209.04	OFFICE	900 x 2150	EX	EX	EX	EX	EX	EX	-	-		PS	PRESSED STEEL FRAME (WELDED)
200.33	LAN ROOM	900 x 2150	A	HM	PT	F1	PS	PT	200.33	-		SW	SOLID CORE WOOD TO MATCH EXISTING WOOD DOORS
												EX	EXISTING DOOR OR FRAME
												SV	STAIN / VARNISH TO MATCH EXISTING
												***	LOCKSETS ARE TO BE "LEVER" STYLE SATIN FINISH ***



1 PARTIAL SECOND FLOOR PLAN  
A1.0 1:50



2 PARTIAL SECOND FLOOR PLAN  
A1.0 1:50

- GENERAL NOTES**
- MODIFY TEGULAR CEILING TILE TO SUIT NEW PARTITION
  - REMOVE SHELVING AND SUPPORTS FROM COLUMN - PATCH AND REPAIR WALL.
  - REMOVE CARPET TILE FROM NEW PARTITION LOCATION-PATCH CARPET TILE AROUND NEW PARTITION. CARPET TILE SUPPLIED BY OWNER.
  - PATCH AND REPAIR FROM MECHANICAL AND ELECTRICAL WORK.
  - FURNITURE SHOWN SHADED - NOT IN CONTRACT



**DO NOT SCALE DRAWINGS**

Revision/Revision	Description/Description	Date/Date
5		
4		
3		
2		
1		
0	TENDER PACKAGE	2015/06/10

Project title/Titre du projet

**LAN AND OFFICE RENO  
REGINA, SASKATCHEWAN**

Approved by/Approve par

Designed by/Concept par

Drawn by/Dessine par

Project Manager/Administrateur de Projets

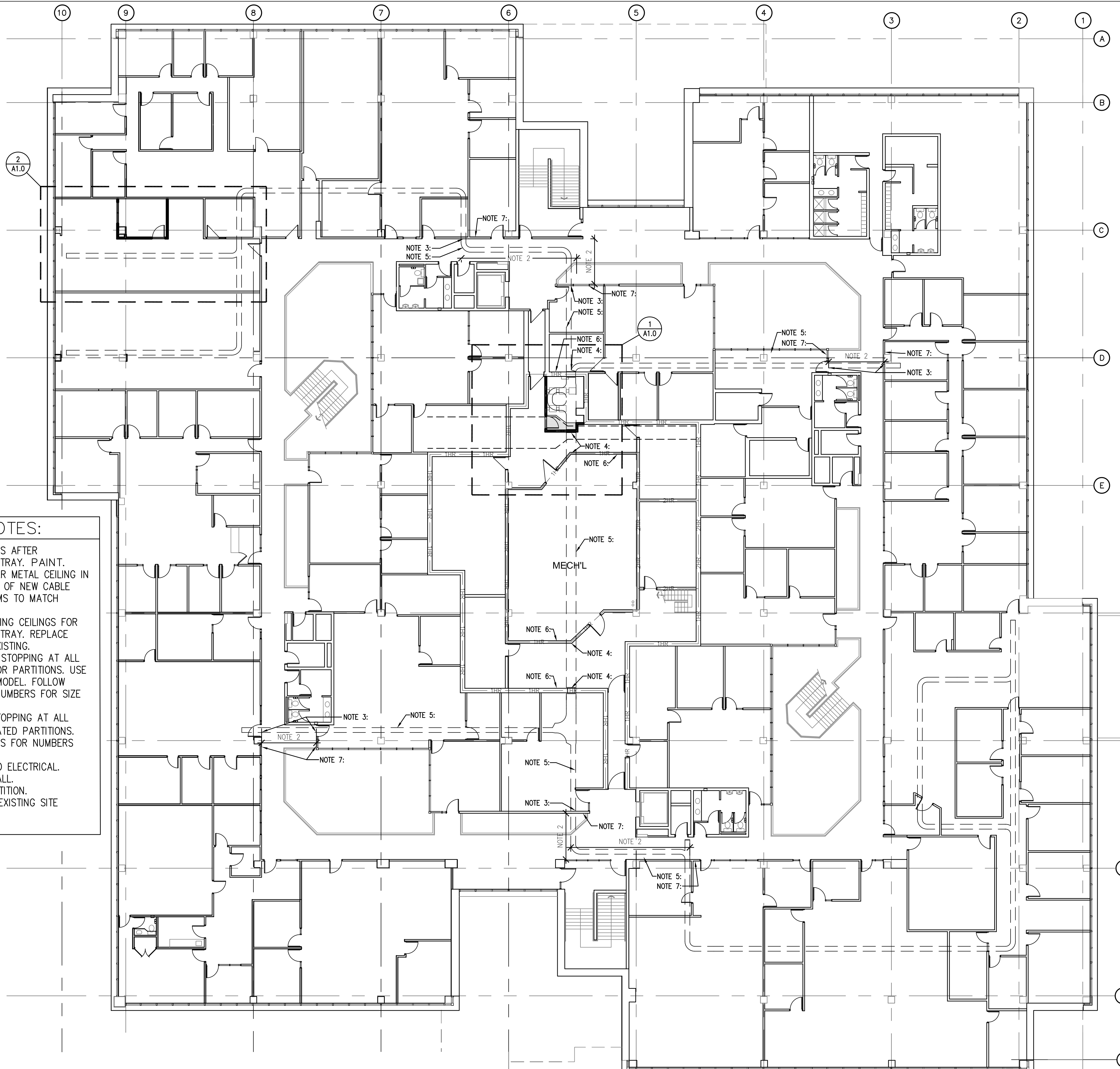
Architectural and Engineering Resources Manager/ Ressources Architectural et de Directeur d'Ingénierie

Client/client

Drawing title/Titre du dessin

**LARGE SCALE FLOOR PLANS  
SCHEDULES**

Project No./No. du projet	Sheet/Fauille	Revision no./ Révision no.
30/2014	A1.0	0



- CONSTRUCTION NOTES:**
1. PATCH AND REPAIR PARTITIONS AFTER INSTALLATION OF NEW CABLE TRAY. PAINT. REMOVE AND REINSTALL LINEAR METAL CEILING IN CORRIDORS FOR INSTALLATION OF NEW CABLE TRAY. REPLACE DAMAGED ITEMS TO MATCH EXISTING.
  2. REMOVE AND REINSTALL EXISTING CEILINGS FOR INSTALLATION OF NEW CABLE TRAY. REPLACE DAMAGED ITEMS TO MATCH EXISTING.
  3. PROVIDE RE-USEABLE SMOKE STOPPING AT ALL CABLE JUNCTIONS TO CORRIDOR PARTITIONS. USE RE-USEABLE FIRE STOPPING MODEL. FOLLOW ELECTRICAL GUIDELINES FOR NUMBERS FOR SIZE OF TRAY.
  4. PROVIDE RE-USEABLE FIRE STOPPING AT ALL WALL/FLOOR JUNCTIONS IN RATED PARTITIONS. FOLLOW ELECTRICAL GUIDELINES FOR NUMBERS FOR SIZE OF TRAY.
  5. NEW CABLE TRAY – REFER TO ELECTRICAL.
  6. EXISTING CONCRETE BLOCK WALL.
  7. EXISTING GYPSUM BOARD PARTITION.
- NOTE: CONTRACTOR TO VERIFY EXISTING SITE CONDITIONS.

**DO NOT SCALE DRAWINGS**

5		
4		
3		
2		
1		
0	TENDER PACKAGE	2015/06/10
Revision/Revisions	Description/Description	Date/Date
Client/client		

Project title/Titre du projet  
**LAN AND OFFICE RENO  
REGINA, SASKATCHEWAN**

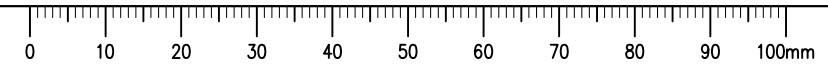
Approved by/Approve par  
 Designed by/Concept par  
 Drawn by/Dessine par  
 RP/CT  
 Project Manager/Administrateur de Projets

Architectural and Engineering Resources Manager/  
 Ressources Architectural et de Directeur d'Ingénierie

Client/client  
 Drawing title/Titre du dessin  
**SECOND FLOOR PLAN**

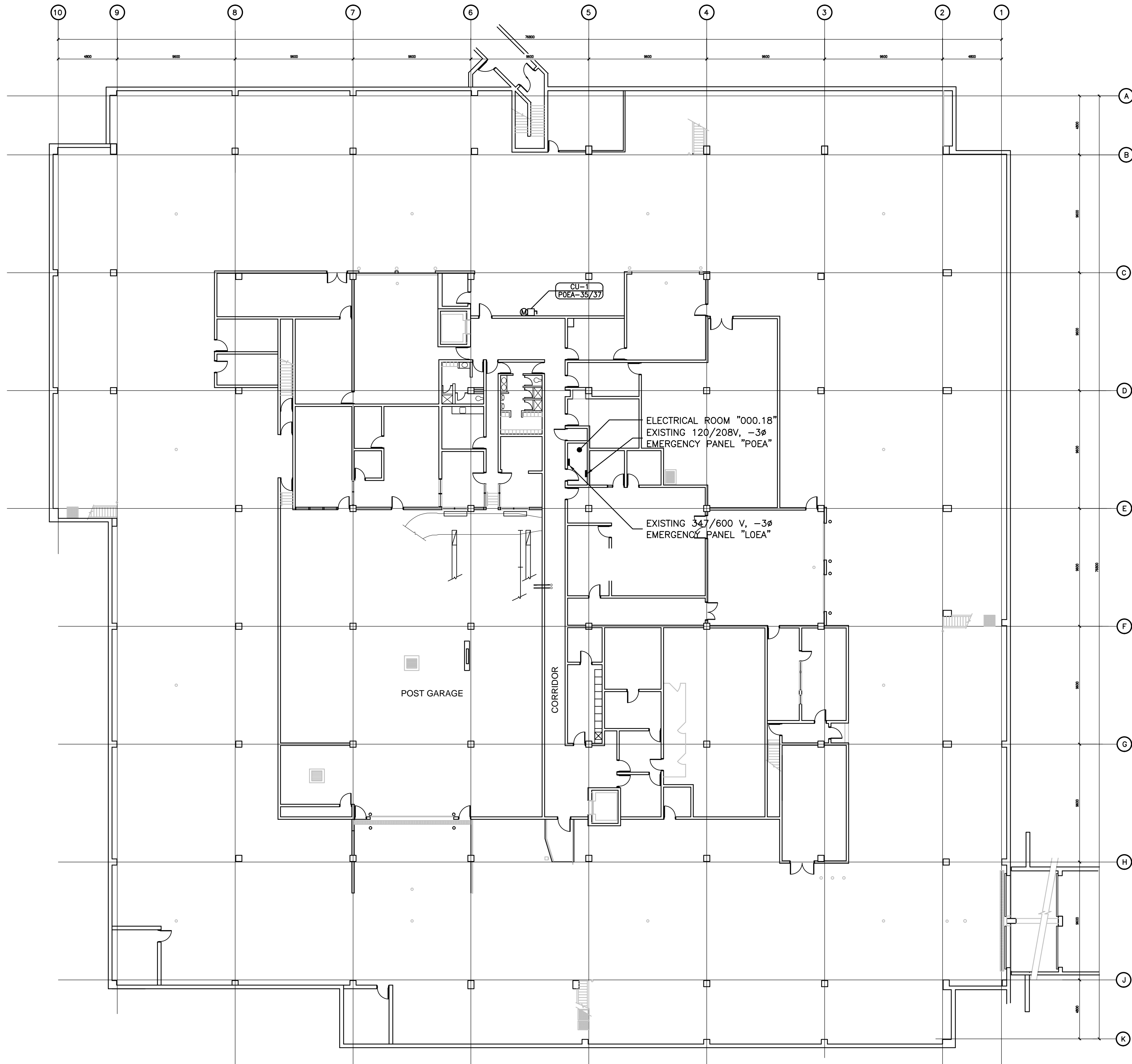
Project No./No. du projet	Sheet/Fauille	Revision no./La Révision no.
30/2014	<b>A1.1</b>	

**3** SECOND FLOOR PLAN  
1:150









**SYMBOL SCHEDULE**

- ELECTRICAL DISTRIBUTION PANEL, SURFACE MOUNTED
- MOLDED CASE TYPE CIRCUIT BREAKER, 15 AMP UNLESS OTHERWISE NOTED.
- MOTOR DISCONNECT SWITCH
- S.P.S.T. SWITCH MOUNTED UP 1200mm.
- TWO S.P.S.T. SWITCHES MOUNTED UP 1200MM, CONTROLLING TWO SEPARATE CIRCUITS.
- FLUORESCENT FIXTURE, SURFACE MOUNTED, CONNECTED TO EMERGENCY POWER UNLESS NOTED OTHERWISE.
- DUPLEX GROUNDED RECEPTACLE MOUNTED UP 450MM.
- DUPLEX GROUNDED LOCKING RECEPTACLE, 120V, 15A, NEMA-L5-15R. SUFFIX 'EM' INDICATES RECEPTACLE CONNECTED TO EMERGENCY POWER PANEL, RECEPTACLE BODY SHALL BE RED. SUFFIX 'UPS' INDICATES RECEPTACLE CONNECTED TO UNINTERRUPTIBLE POWER SUPPLY PANEL, RECEPTACLE BODY SHALL BE BLUE.
- DUPLEX T-SLOT (NEMA 5-20R) GROUNDED RECEPTACLE.
- EXISTING SPLIT WIRED RECEPTACLE.
- MOTOR CONNECTION. REFER ALSO TO MECHANICAL DRAWINGS FOR DETAILS + COORDINATE FINAL LOCATION ON SITE.
- COPPER GROUND
- CONDUIT STUB
- RECESSED FIXTURE, EXISTING TO REMAIN.
- RECESSED FIXTURE, TO BE REMOVED AND RELOCATED TO LOCATIONS SHOWN AS 'REL'.
- RECESSED FIXTURE, TO BE RELOCATED.
- RECESSED FIXTURE, NEW. OBTAIN FROM OWNER'S STOCK.
- 'E' INDICATES EXISTING EQUIPMENT OR DEVICE TO REMAIN UNLESS NOTED OTHERWISE
- FIRE ALARM SIGNAL DEVICE - HORN/STROBE.
- DATA OUTLET MOUNTED UP 450 MM UNLESS NOTED OR SUFFIXED OTHERWISE. PROVIDE A 100 MM SQUARE BOX C/W SINGLE GANG EXTENSION AND RUN A 27 MM CONDUIT UP TO THE EXISTING CABLE TRAY. SUFFIX INDICATES QUANTITY OF DATA AND VOICE JACKS - EG. 2D/2V INDICATES TWO DATA JACKS AND TWO VOICE JACK.
- CABLE TV OUTLET ROUGH-IN. PROVIDE A 100mm SQUARE BOX C/W SINGLE GANG EXTENSION. RUN 27mm EMPTY CONDUIT UP INTO ACCESSIBLE CEILING & TERMINATE WITHIN 300mm OR EXISTING CABLE TRAY. COORDINATE MOUNTING HEIGHT WITH OWNER'S EQUIPMENT ON SITE.
- EXISTING CLOCK TO REMAIN
- EXISTING CEILING MOUNTED SPEAKER TO REMAIN
- EXISTING DOOR CHIME TO REMAIN
- INDICATES TAG OF MECHANICAL EQUIPMENT
- INDICATES CIRCUIT NUMBER

**MECHANICAL NOTE 1:**

NEW AIR CONDITIONING UNIT CU-1/AC-1 CONSISTS OF AN OUTDOOR UNIT (CONDENSER) IN LOWER LEVEL AND INDOOR UNIT IN NEW LAN ROOM 200.33.

PROVIDE AN ELECTRICAL CONNECTION TO THE NEW CONDENSING UNIT ON THE LOWER LEVEL. CONDENSING UNIT IS RATED AT 208 VOLTS, SINGLE PHASE, MINIMUM CIRCUIT AMPS OF 12 AMPS, AND MAXIMUM OVERCURRENT PROTECTION DEVICE OF 15 AMPS. FEED FROM A NEW 15 AMP, 2 POLE BREAKER IN PANEL POEA, CIRCUIT POEA-35/37. RUN 2 #10 RW90 + #10 INSULATED BOND IN A 21mm CONDUIT. INSTALL A NON-FUSED DISCONNECT SWITCH AT THE CONDENSING UNIT.

PROVIDE CONNECTION TO THE NEW INDOOR UNIT IN SECOND FLOOR LAN ROOM 200.33. INDOOR UNIT IS RATED AT 208 VOLT, SINGLE PHASE, 1.0 MINIMUM CIRCUIT AMPS. INDOOR UNIT POWER IS SUPPLIED FROM THE OUTDOOR CONDENSING UNIT, WITH INTERNAL PROTECTION PROVIDED IN THE CONDENSING UNIT. RUN RUN 3#10 RW90 + #10 INSULATED BOND IN 21mm CONDUIT FROM OUTDOOR UNIT TO INDOOR UNIT, AND COMPLETE THE POWER TERMINATIONS. OUTDOOR AND INDOOR UNIT HAVE POLARITIES - ENSURE INSTALLATION/CONNECTIONS ARE MADE IN ACCORDANCE WITH THE MANUFACTURER'S INSTALLATION INSTRUCTIONS. CONDUIT ROUTING BETWEEN OUTDOOR AND INDOOR UNITS SHALL FOLLOW MECHANICAL PIPING ROUTING. PROVIDE CORES AS REQUIRED. REFER TO MECHANICAL DRAWING M-1.

**1 LOWER FLOOR PANEL LOCATIONS**  
E1.0 1:200

MECHANICAL SCHEDULE															
ITEM	DESCRIPTION	EMERG.(Y/N)	MCA	HP	KW	VOLTAGE	Ø	FLA	STARTER	SIZE	LOCATION	FUSE	BREAKER	FEEDERS	PANELS
AC-1	AIR CONDITIONING UNIT - 2ND FLOOR	Y	1	-	-	208	1	0.8	N/A	N/A	LAN ROOM	-	15A-2P	SEE NOTE 1	SEE NOTE 1
CU-1	CONDENSING UNIT - LOWER LEVEL	Y	12	-	-	208	1	9.6	N/A	N/A	PARKADE	-	15A-2P	2 #10 + 10 INS. BOND IN 21C	SEE NOTE 1



100 - 3725 Prince Street, Regina, SK S4S 6W8 ph: (306) 569-3255  
102 - 3718 Kiewit Place, Saskatoon, SK S7P 0A6 ph: (306) 652-4457  
www.sepw.ca



400-2222 Albert Street, Regina, SK S4P 2V2  
P: (306) 569-1303 F: (306) 569-1307  
Email: ra@ritenburg.com



ASSOCIATION OF PROFESSIONAL ENGINEERS OF SASKATCHEWAN  
CERTIFICATE OF AUTHORIZATION  
RITENBURG & ASSOCIATES LTD.  
NUMBER 52  
PERMISSION TO CONSULT HELD BY:  
DISCIPLINE: ELECTRICAL  
ELECTRICAL 9273

**DO NOT SCALE DRAWINGS**

Revision/	Description/Description	Date/Date
0	TENDER PACKAGE	06/10/2015

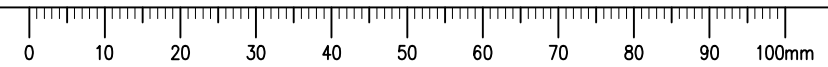
Project title/Titre du projet  
**LAN AND OFFICE RENO  
REGINA, SASKATCHEWAN**

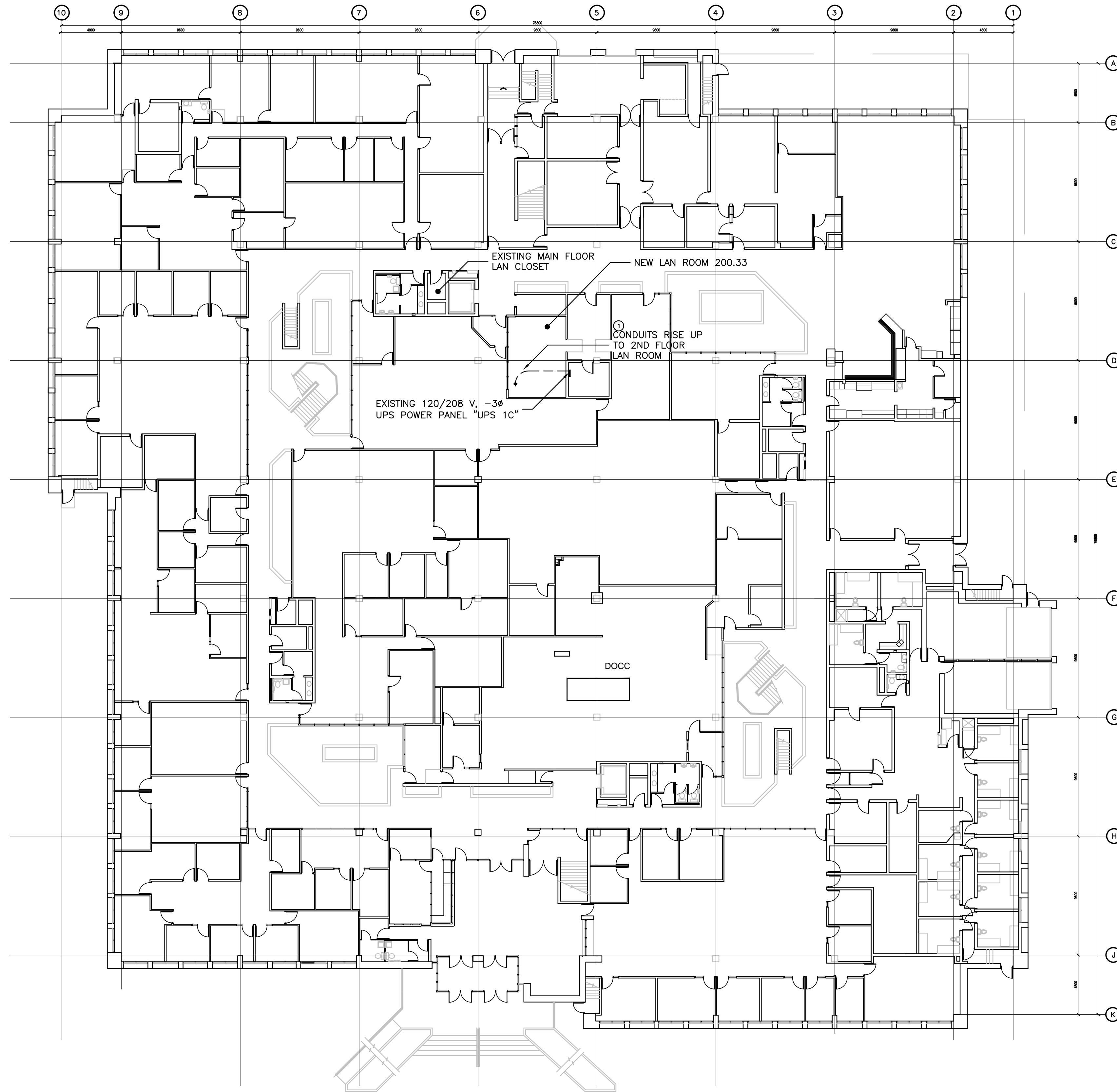
Approved by/Approve par  
SBK  
Designed by/Concept par  
KAD  
Drawn by/Dessine par  
KAD  
Project Manager/Administrateur de Projets  
Architectural and Engineering Resources Manager/  
Ressources Architectural et de Directeur d'ingénierie  
Client/client

Drawing title/Titre du dessin  
**LOWER LEVEL  
PANEL LOCATIONS  
MECHANICAL PROVISIONS**

Project No./No. du projet  
30/2014  
Sheet/Feuille  
E1.0  
Revision no./  
La Révision  
no.  
0

DRAWING: E1.0 30/2014  
FILE NAME: 301401\_E1.0\_Panels\_Rev\_0.dwg  
DATE: 10/10/2015 10:00 AM





**POWER & SYSTEMS KEY NOTES**

- ① CONDUITS FOR NEW BRANCH CIRCUITS FED FROM EXISTING PANEL 'UPS 1C' SHALL BE RUN IN CEILING SPACE OF MAIN FLOOR, AND RISE UP ON WEST WALL OF NEW 2ND FLOOR LAN ROOM.

**SEPW Architecture Inc.**  
 103 - 3725 Praeger Street, Regina, SK S4S 0A8 ph: (306) 569-2255  
 103 - 3718 Kiewit Place, Saskatoon, SK S7P 0A6 ph: (306) 652-6457  
 www.sepw.ca

**Ritenburg & Associates Ltd.**  
 Consulting Electrical Engineers  
 400-2222 Albert Street, Regina, SK S4P 2V2  
 P: (306) 569-1303 F: (306) 569-1307  
 Email: raf@ritenburg.com



ASSOCIATION OF PROFESSIONAL ENGINEERS  
 OF SASKATCHEWAN  
 CERTIFICATE OF AUTHORIZATION  
 RITENBURG & ASSOCIATES LTD.  
 NUMBER 52  
 PERMISSION TO CONSULT HELD BY:  
 DISCIPLINE: ELECTRICAL SIGN. REG. NO. 9273 SIGNATURE: [Signature]  
 ELECTRICAL 9273

**DO NOT SCALE DRAWINGS**

Revision/Revision	Description/Description	Date/Date
0	TENDER PACKAGE	09/10/2015

Client/client

Project title/Titre du projet

**LAN AND OFFICE RENO  
 REGINA, SASKATCHEWAN**

Approved by/Approve par  
 SBK

Designed by/Concept par  
 KAD

Drawn by/Dessine par  
 KAD

Project Manager/Administrateur de Projets

Architectural and Engineering Resources Manager/  
 Ressources Architectural et de Directeur d'ingénierie

Client/client

Drawing title/Titre du dessin  
**MAIN FLOOR  
 POWER & SYSTEM PLAN**

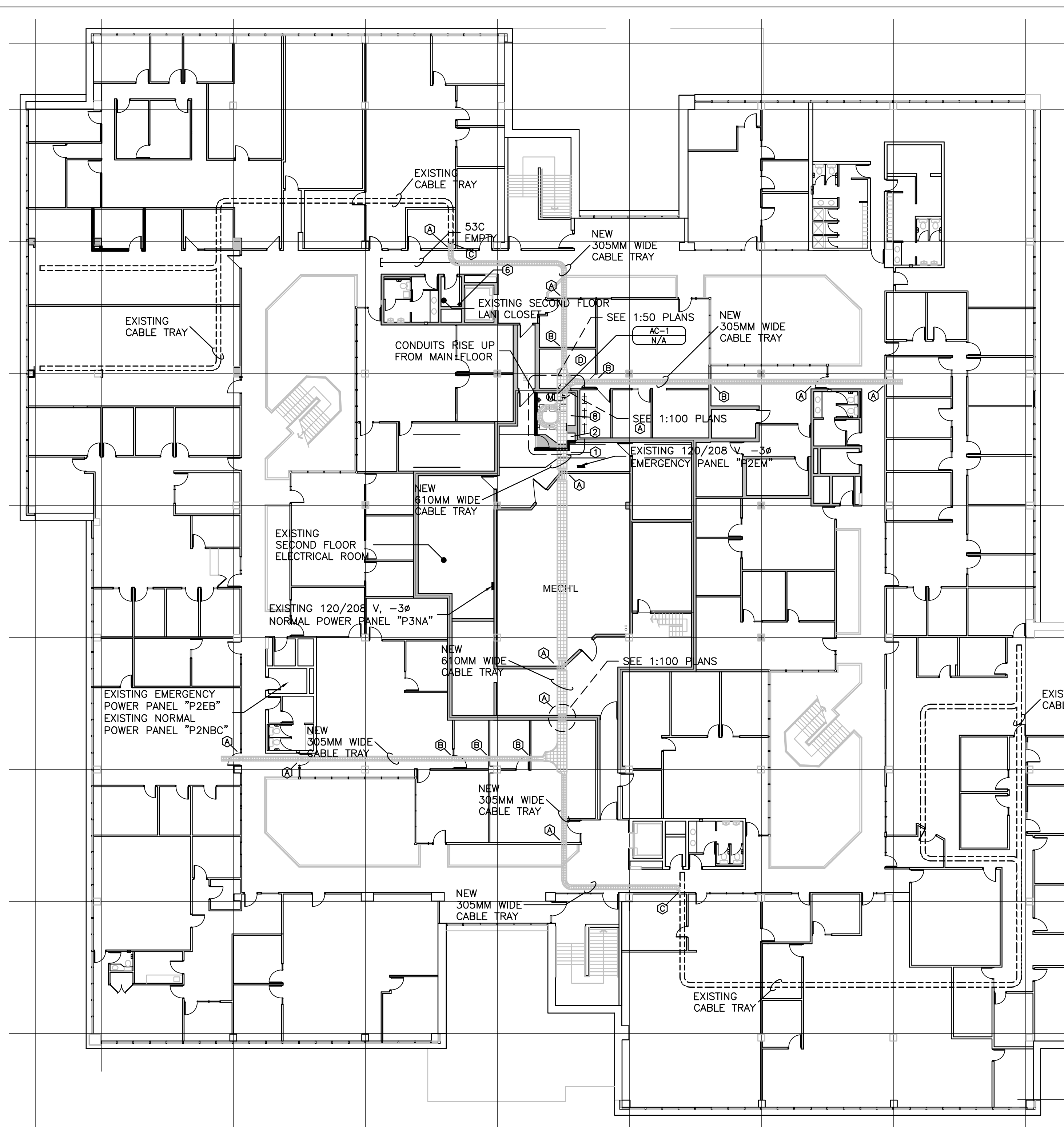
Project No./No. du projet 30/2014	Sheet/Fauille E1.1	Revision no./ La Révision no. 0
--------------------------------------	-----------------------	---------------------------------------

① MAIN FLOOR POWER & SYSTEM PLAN  
 E1.1 1:200

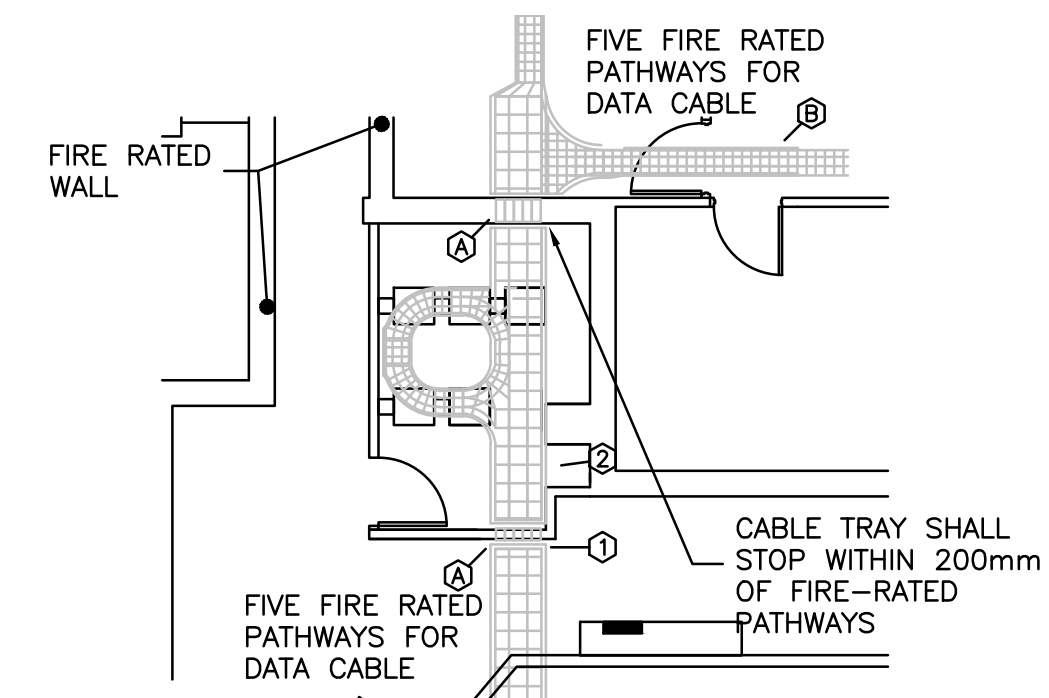
DRAWING PLOTTED ON 24/02/14 AM  
 FILE NAME: 301401\_E1.1\_Power.dwg  
 PLOT TIME: 07:11



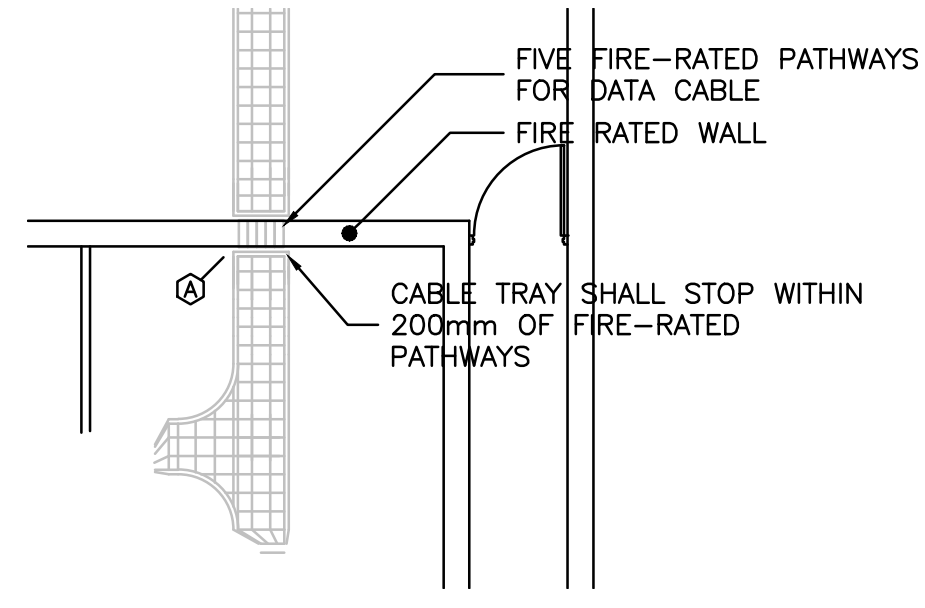




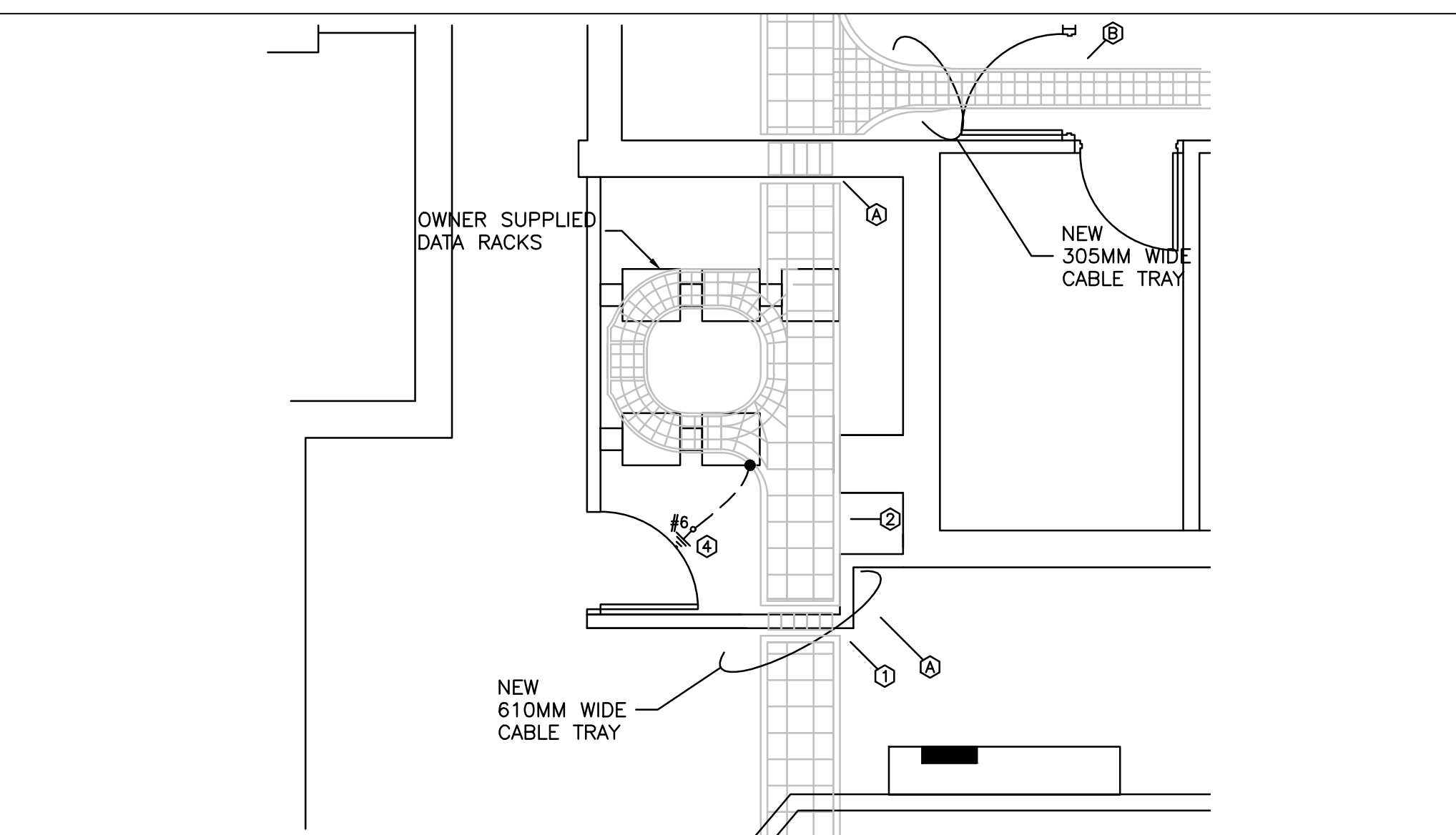
1 SECOND FLOOR POWER & SYSTEM PLAN  
E1.2 1:200



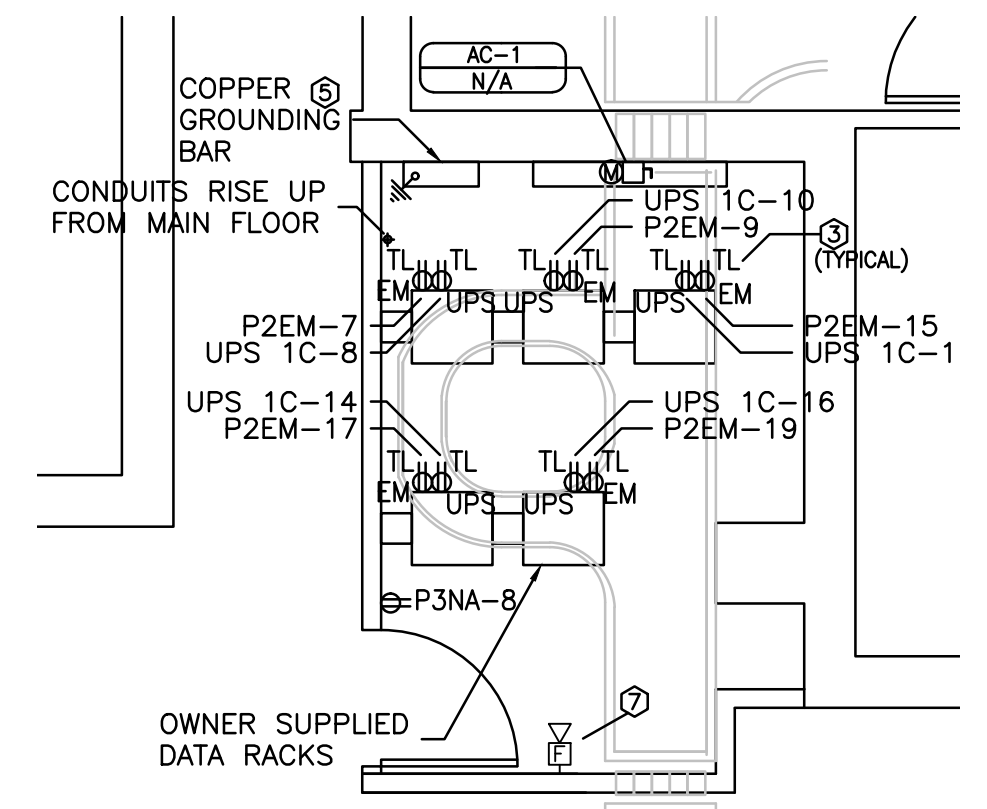
5 FIRE RATED PATHWAYS DETAIL (305mm)  
E1.2 1:100



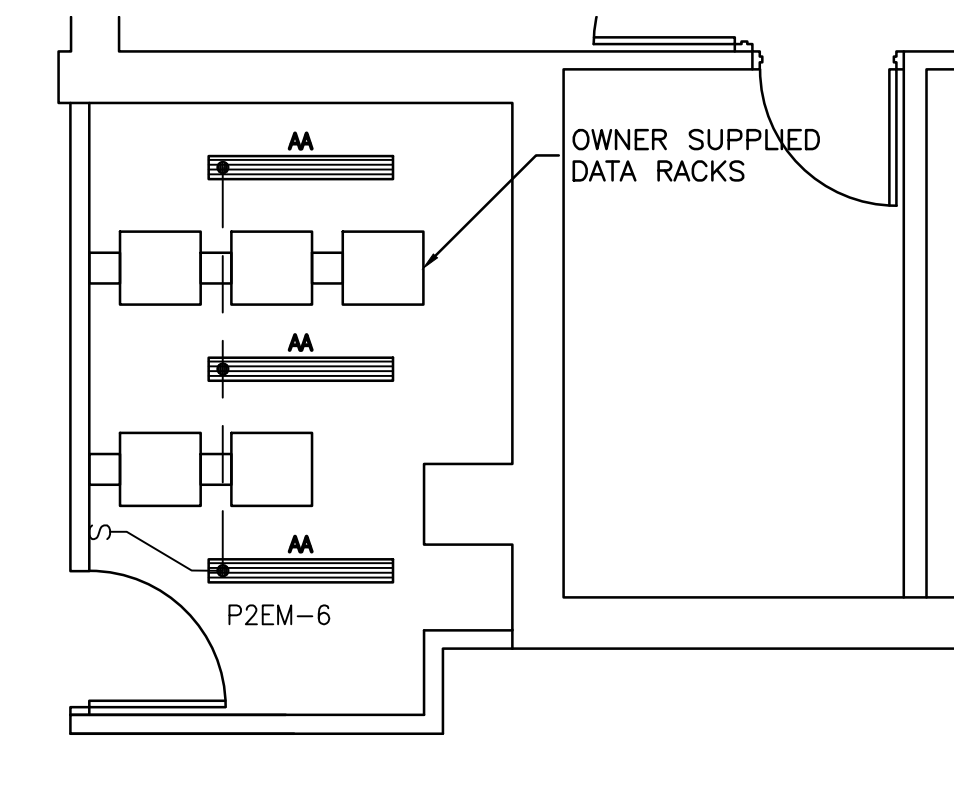
6 FIRE RATED PATHWAYS DETAIL (610mm)  
E1.2 1:100



2 LAN ROOM BASKET TRAY DETAIL  
E1.2 1:50



3 LAN ROOM POWER DETAIL  
E1.2 1:50



4 LAN ROOM LIGHTING DETAIL  
E1.2 1:50

LAN ROOM KEYNOTES

- 1 CABLE TRAY SHALL BE RUN OVER EXISTING DUCT.
- 2 CABLE TRAY SHALL SLOPE DOWN TO 2700mm A.F.F. OVER RACKS.
- 3 ALL UPS & EMERGENCY POWER RECEPTACLES SHALL BE MOUNTED TO CABLE TRAY ABOVE DATA RACKS. OUTLET BOXES SHALL BE CONNECTED TO UNISTRUT SUPPORTS CONNECTED TO CABLE UNISTRUT SUPPORTS.
- 4 CABLE TRAY SHALL BE BONDED TO EXISTING BUILDING GROUND. RUN #6 INSULATED COPPER GROUND CONDUCTOR AND CONNECT INTO EXISTING BUILDING GROUND CONDUCTOR IN 2ND FLOOR ELECTRICAL ROOM.
- 5 PROVIDE A COPPER GROUNDING BAR & RUN A #6 INSULATED COPPER GROUND CONDUCTOR & CONNECT TO THE EXISTING BUILDING GROUND CONDUCTOR IN 2ND FLOOR ELECTRICAL ROOM. RUN A #6 INSULATED COPPER BOND CONDUCTOR FROM THE GROUNDING BAR TO EACH OWNER SUPPLIED DATA RACK.
- 6 CORE A 53C. HOLE IN EXISTING FLOOR OF 2ND FLOOR LAN CLOSET DOWN TO EXISTING MAIN FLOOR LAN CLOSET BELOW. RUN AN EMPTY 53C. EMT FROM MAIN FLOOR LAN CLOSET UP THROUGH CEILING SPACE OF 2ND FLOOR, AND TERMINATE WITHIN 300mm OF NEW CABLE TRAY.
- 7 PROVIDE A NEW FIRE ALARM SIGNAL DEVICE TO MATCH EXISTING DEVICES. CONNECT INTO EXISTING FIRE ALARM SYSTEMS.
- 8 THE LAN IS BEING PROVIDED WITH DISSIPATIVE TILE FLOORING. THE SUPPLIER/INSTALLER SHALL BE PROVIDING COPPER STRIPS BELOW THE TILES. THE ELECTRICAL CONTRACTOR SHALL CONNECT A #12 AWG INSULATED COPPER GROUND TO THE COPPER STRIPS AND RUN TO THE COPPER GROUNDING BAR IN THE LAN ROOM.

CABLE TRAY KEYNOTES

- A PROVIDE FIRE RATED PATHWAY DEVICES IN NEW AND EXISTING FIRE RATED WALLS IN LOCATIONS AND QUANTITIES NOTED ON DRAWINGS; FIVE PATHWAYS FOR 610mm WIDE CABLE TRAY, AND THREE PATHWAYS FOR 305mm CABLE TRAY. FIRE RATED PATHWAYS SHALL BE INSTALLED AT THE SAME ELEVATION OF NEW CABLE TRAY. FOR FUTURE INSTALLATION OF DATA AND COMMUNICATION CABLE BY OWNER. PATHWAY DEVICES SHALL BE SQUARE PROFILE, 102MM X 118MM X 356MM LONG, PROVIDE A MINIMUM FIRE RATING OF 4 HOURS, BE MANUFACTURED OF HEAVY GAUGE GALVANIZED STEEL, WITH INTUMESCENT MATERIAL FOR RAPID EXPANSION WHEN EXPOSED TO FIRE OR HIGH TEMPERATURES. MULTIPLE DEVICES SHALL BE MOUNTED HORIZONTALLY IN-LINE USING MANUFACTURED WALL PLATES, AND ALL PENETRATIONS AROUND THE PERIMETER OF THE DEVICES SHALL BE FIRESTOPPED. FIRE RATED PATHWAY DEVICES SHALL BE STI E2-PATH SERIES 44+.
- B PROVIDE OPENING IN EXISTING WALL ABOVE T-BAR CEILING LINE TO ALLOW FOR INSTALLATION OF NEW CABLE TRAY THROUGH THE WALL.
- C NEW CABLE TRAY SHALL TERMINATE WITHIN 50mm OF EXISTING TRAY. PROVIDE #6 INSUL. COPPER BOND JUMPER CONNECTION BETWEEN NEW & EXISTING TRAY.
- D CONTRACTOR SHALL COORDINATE THE INSTALLATION OF NEW CABLE TRAY WITH EXISTING SITE CONDITIONS. RUN TRAY OVER EXISTING DUCTWORK AS REQUIRED.

**SEPW Architecture Inc.**  
100-3725 Prince Street, Regina, SK S4S 0A8 ph: (306) 569-3255  
102-3718 Keweenaw Place, Saskatoon, SK S7P 0A6 ph: (306) 652-4457  
www.sepw.ca

**Ritenburg & Associates Ltd.**  
Consulting Electrical Engineers  
400-2222 Albert Street, Regina, SK S4P 2V2  
P: (306) 569-1303 F: (306) 569-1307  
Email: raj@ritenburg.com



ASSOCIATION OF PROFESSIONAL ENGINEERS OF SASKATCHEWAN  
CERTIFICATE OF AUTHORIZATION  
RITENBURG & ASSOCIATES LTD.  
NUMBER 52  
PERMISSION TO CONSULT HELD BY:  
DISCIPLINE: ELECTRICAL  
SASK. REG. NO.: 9273  
SIGNATURE: [Signature]

DO NOT SCALE DRAWINGS

Revision/Revision	Description/Description	Date/Date
0	TENDER PACKAGE	09/10/2015

Project title/Titre du projet

**LAN AND OFFICE RENO  
REGINA, SASKATCHEWAN**

Approved by/Approve par  
SBK

Designed by/Concept par  
KAD

Drawn by/Dessine par  
KAD

Project Manager/Administrateur de Projets

Architectural and Engineering Resources Manager/  
Ressources Architectural et de Directeur d'Ingénierie

Client/client

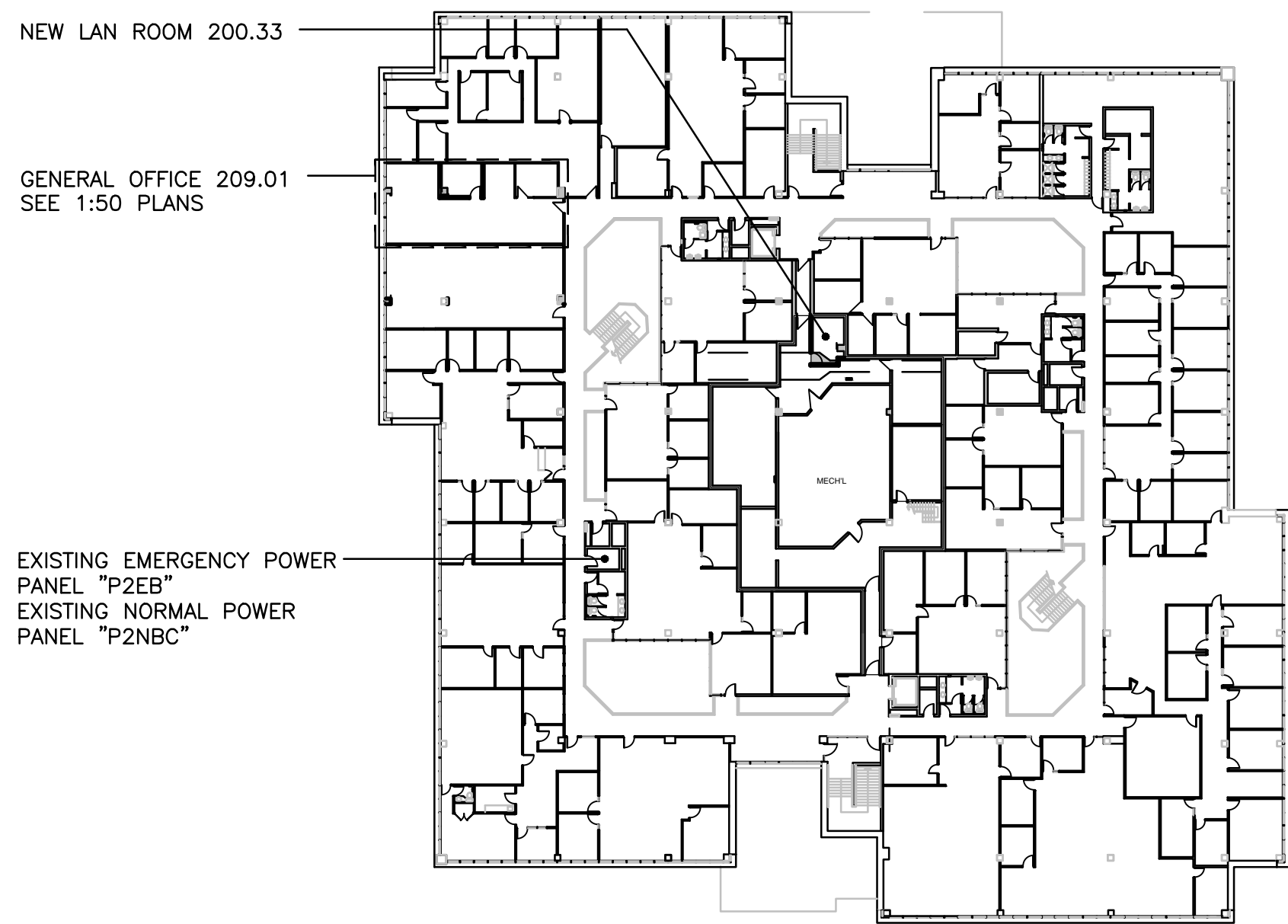
Drawing title/Titre du dessin

**SECOND FLOOR  
NEW DATA PLAN**

Project No./No. du projet	Sheet/Feuille	Revision no./La Révision no.
30/2014	E1.2	0







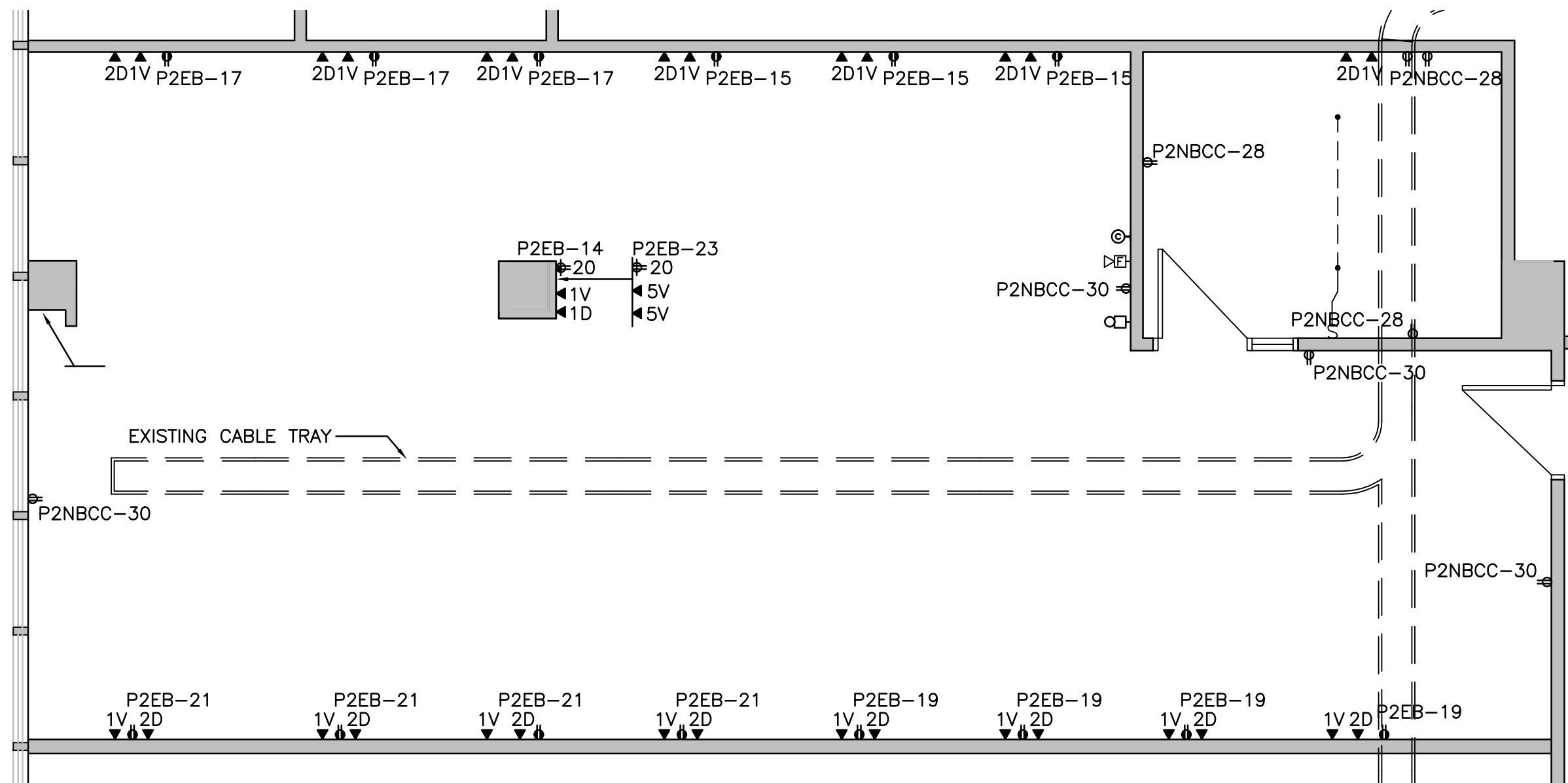
1 KEYPLAN - SECOND FLOOR  
E1.3 1:500

**LIGHTING KEYNOTES**

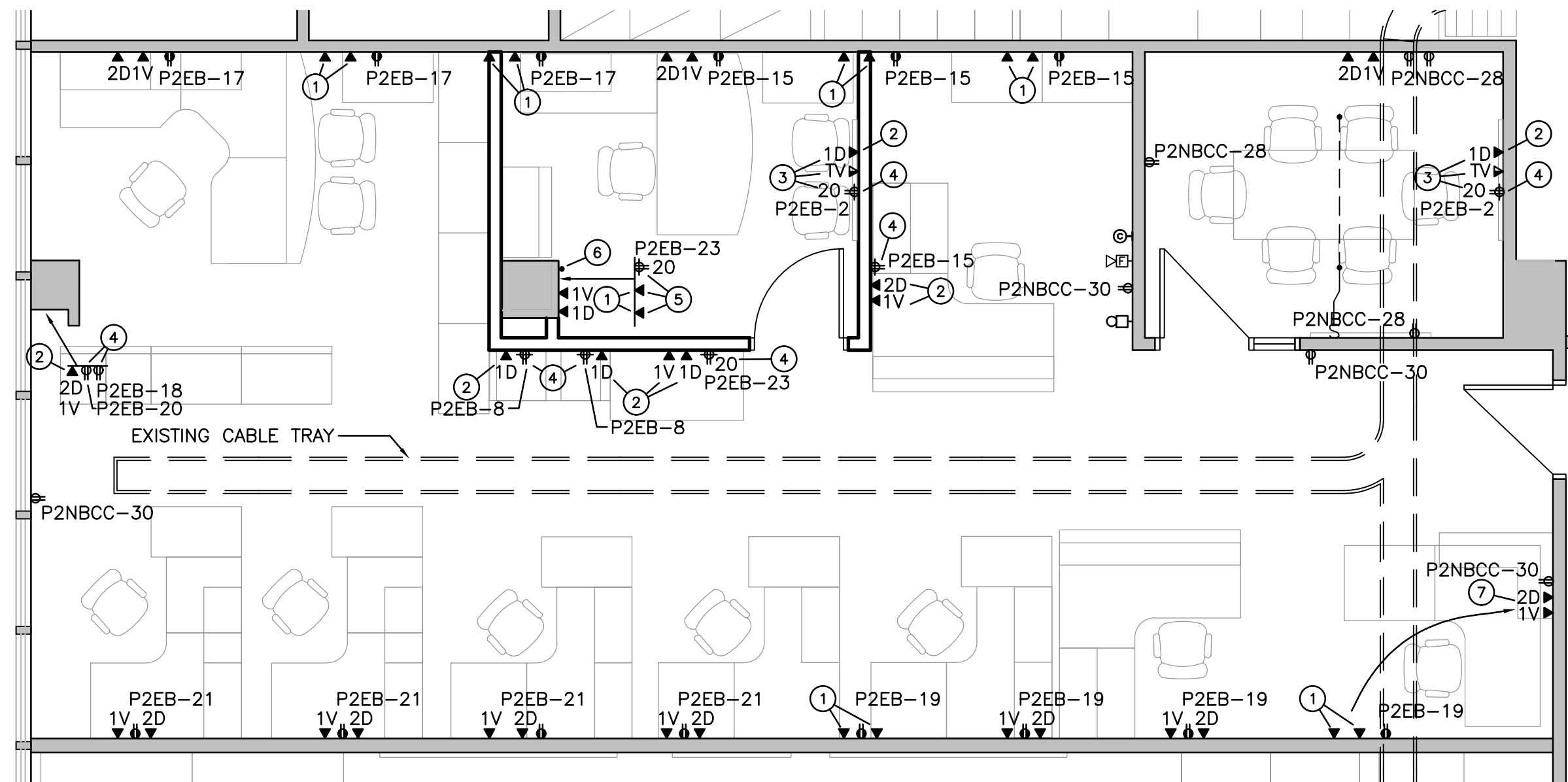
- ① PROVIDE NEW SWITCH AND ASSOCIATED CIRCUITRY SHOWN ON DRAWING.
- ② INSTALL NEW 1' X 4' LIGHT FIXTURE. FIXTURE SHALL BE OBTAINED FROM OWNER'S EXISTING STOCK.
- ③ CONNECT EXISTING FIXTURE INTO NEW SWITCH PROVIDED IN THIS ROOM (KEYNOTE 1).
- ④ EXISTING EXIT SIGN SHALL REMAIN.
- ⑤ EXISTING SWITCHES SHALL REMAIN.
- ⑥ EXISTING CEILING MOUNTED SPEAKERS SHALL REMAIN. (TYPICAL OF 4)

**POWER & SYSTEMS KEYNOTES**

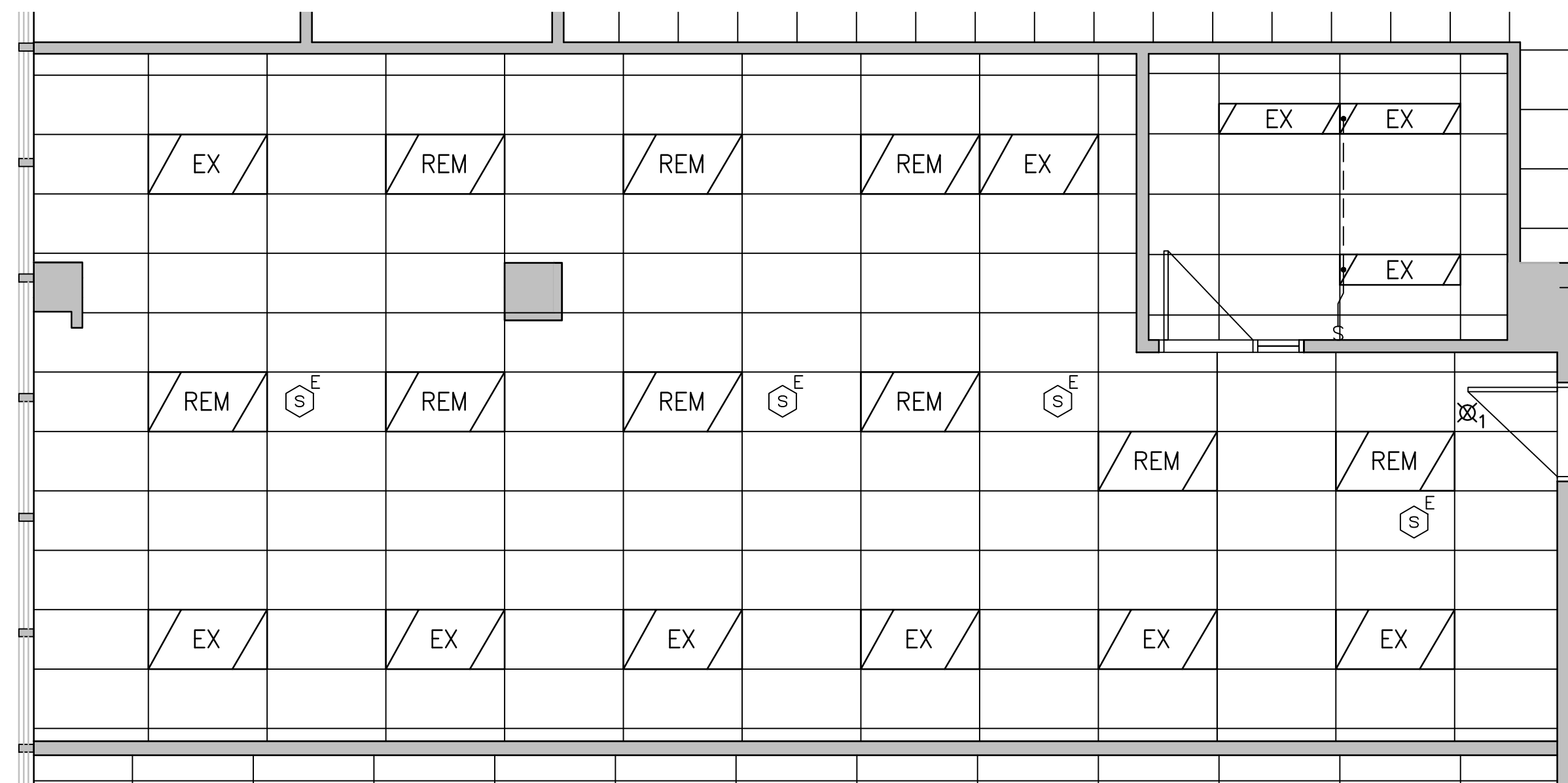
- ① REMOVE DATA/VOICE JACK AND ASSOCIATED CABLING. PROVIDE BLANK COVERS ON 2D/1V BOXES.
- ② PROVIDE NEW CAT6 DATA AND VOICE JACKS AND ASSOCIATED CABLING AS SHOWN. NEW CABLES SHALL RUN TO NEW LAN ROOM 200.33.
- ③ DEVICES SHALL BE MOUNTED BEHIND NEW TV MONITOR. COORDINATE MOUNTING HEIGHT WITH NEW OWNER.
- ④ PROVIDE NEW RECEPTACLE AND CONNECT INTO CIRCUITRY SHOWN.
- ⑤ REMOVE OUTLETS AND PROVIDE BLANK COVER. EXISTING OUTLETS ARE MOUNTED UP 2100mm ABOVE FINISHED FLOOR.
- ⑥ EXISTING RECEPTACLE SHALL BE REMOVED. PROVIDE BLANK COVER. CIRCUITRY SHALL BE REUSED.
- ⑦ RELOCATE DATA AND VOICE JACKS FROM THOSE BEING REMOVED NEARBY.



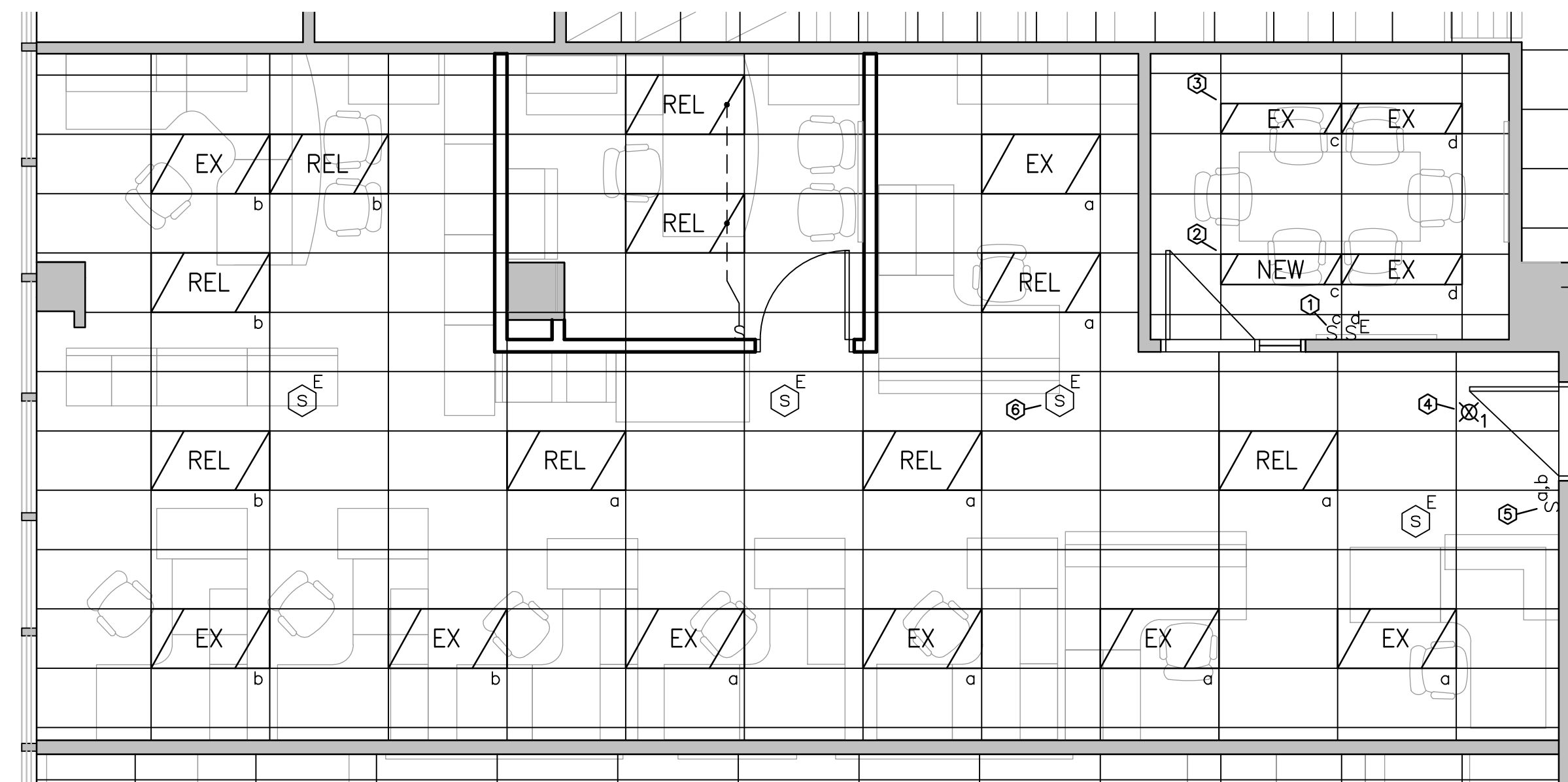
2 GENERAL OFFICE 209.01 POWER & SYSTEMS EXISTING PLAN  
E1.3 1:50



3 GENERAL OFFICE 209.01 POWER & SYSTEMS NEW LAYOUT  
E1.3 1:50



4 GENERAL OFFICE 209.01 LIGHTING EXISTING PLAN  
E1.3 1:50



5 GENERAL OFFICE 209.01 LIGHTING NEW LAYOUT  
E1.3 1:50



100 - 3725 Pattee Street, Regina, SK S4S 6W8 ph: (306) 569-3255  
102 - 3718 Keweenaw Place, Saskatoon, SK S7P 0A6 ph: (306) 652-4457  
www.sepw.ca



400-2222 Albert Street, Regina, SK S4P 2V2  
P: (306) 569-1303 F: (306) 569-1367  
Email: rait@ritenburg.com



ASSOCIATION OF PROFESSIONAL ENGINEERS OF SASKATCHEWAN  
CERTIFICATE OF AUTHORIZATION  
RITENBURG & ASSOCIATES LTD.  
NUMBER 52  
PERMISSION TO CONSULT HELD BY:  
DISCIPLINE: ELECTRICAL REG. NO. SIGNATURE  
ELECTRICAL 9273

**DO NOT SCALE DRAWINGS**

Revision/Revision	Description/Description	Date/Date
0	TENDER PACKAGE	06/10/2015
1		
2		
3		
4		
5		

Project title/Titre du projet

**LAN AND OFFICE RENO  
REGINA, SASKATCHEWAN**

Approved by/Approve par  
SBK

Designed by/Concept par  
KAD

Drawn by/Dessine par  
KAD

Project Manager/Administrateur de Projets

Architectural and Engineering Resources Manager/  
Ressources Architectural et de Directeur d'Ingénierie

Client/client

Drawing title/Titre du dessin

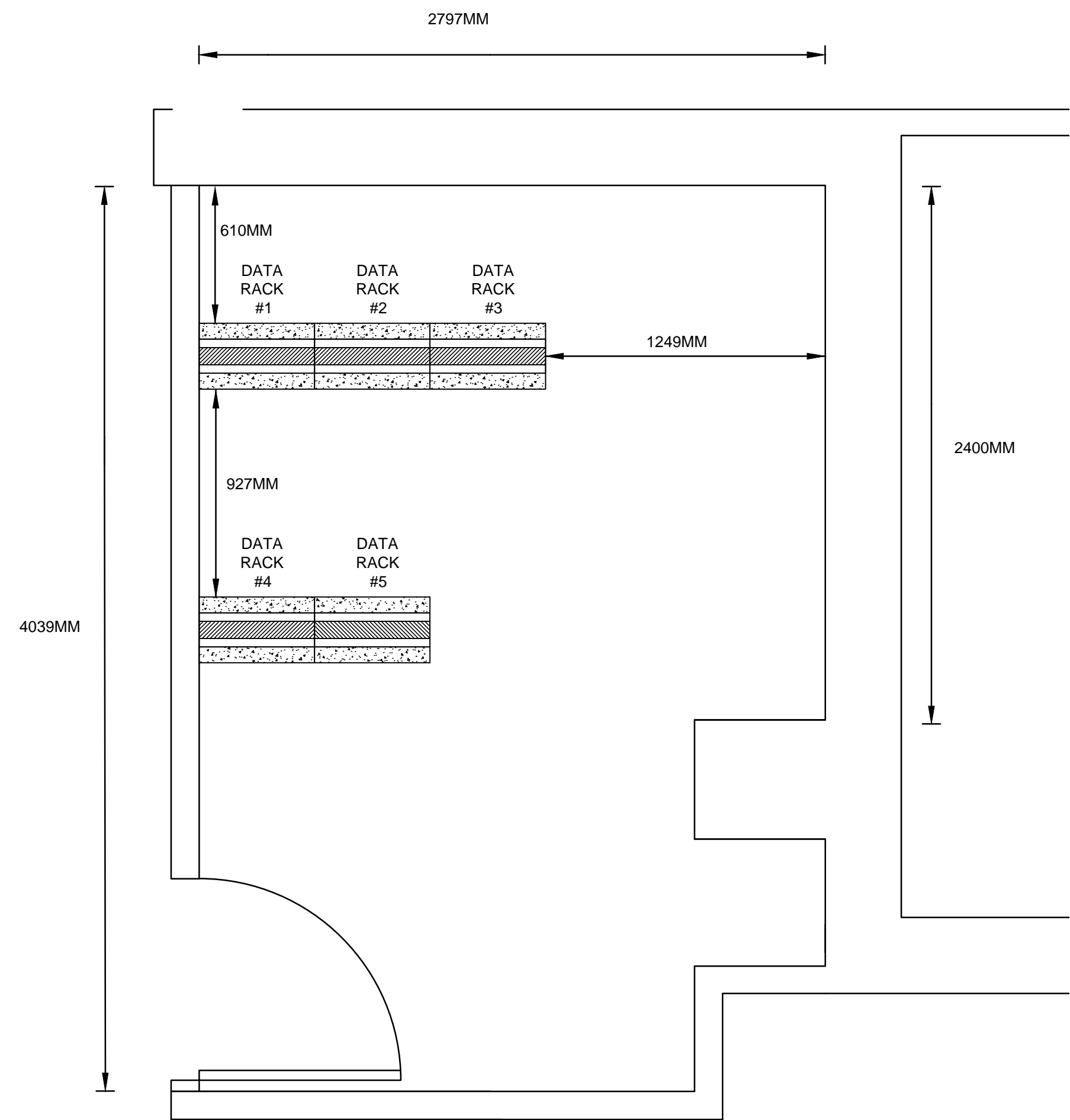
**SECOND FLOOR  
POWER & SYSTEMS PLAN  
GENERAL OFFICE**

Project No./No. du projet  
30/2014

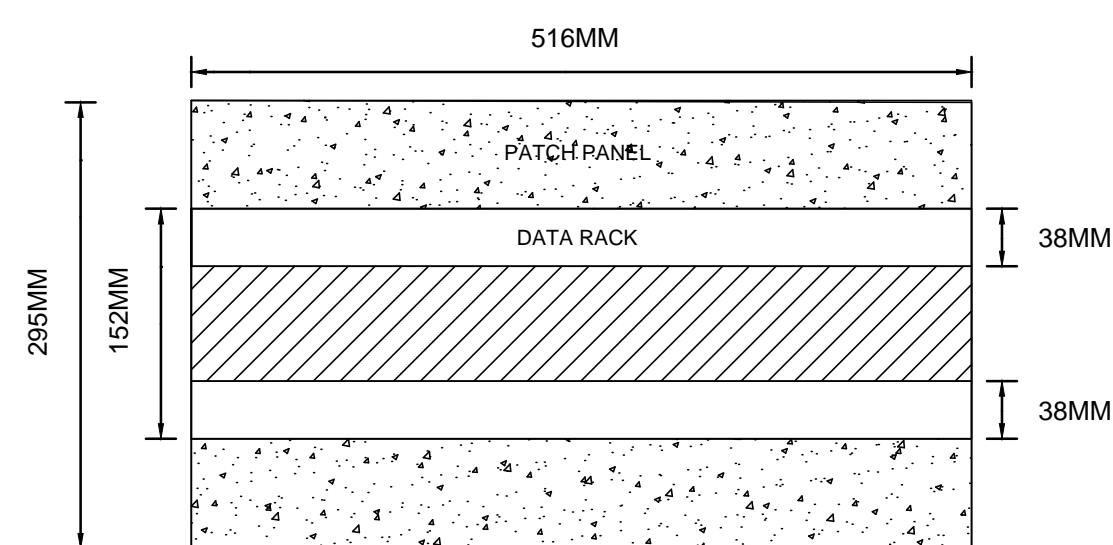
Sheet/Fauille  
E1.3

Revision no./La Révision no.  
0

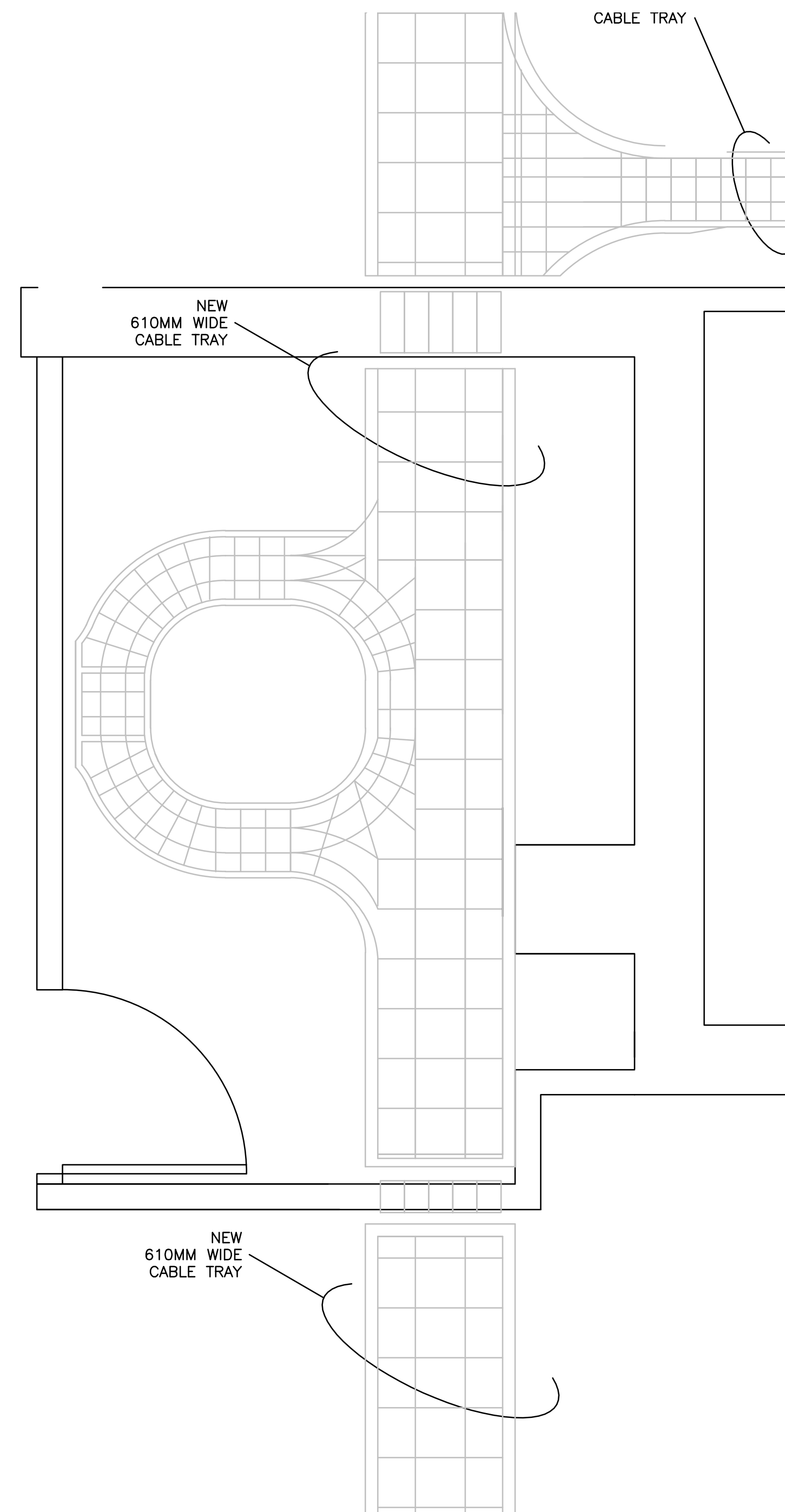




1 LAN ROOM DATA RACK LAYOUT  
E1.4 1:20  
NORTH



2 DATA RACK DETAIL  
E1.4 1:5



3 CABLE TRAY LAYOUT  
E1.4 1:20

**SEPW Architecture Inc.**  
100 - 3725 Prince Street, Regina, SK S4S 0A8 ph: (306) 569-2255  
102 - 3718 Kiewit Place, Saskatoon, SK S7P 0A6 ph: (306) 652-4457  
www.sepw.ca

**Ritenburg & Associates Ltd.**  
Consulting Electrical Engineers  
400-2222 Albert Street, Regina, SK S4P 2V2  
P: (306) 569-1303 F: (306) 569-1307  
Email: ra@ritenburg.com



ASSOCIATION OF PROFESSIONAL ENGINEERS  
OF SASKATCHEWAN  
CERTIFICATE OF AUTHORIZATION  
RITENBURG & ASSOCIATES LTD.  
NUMBER 52  
PERMISSION TO CONSULT HELD BY:  
DISCIPLINE: ELECTRICAL SASK. REG. NO.: 9273 SIGNATURE: [Signature]

DO NOT SCALE DRAWINGS

Revision/Revision	Description/Description	Date/Date
0	TENDER PACKAGE	06/10/2015

Project title/Titre du projet

**LAN AND OFFICE RENO  
REGINA, SASKATCHEWAN**

Approved by/Approve par  
SBK

Designed by/Concept par  
KAD

Drawn by/Dessine par  
KAD

Project Manager/Administrateur de Projets

Architectural and Engineering Resources Manager/  
Ressources Architectural et de Directeur d'ingénierie

Client/client

Drawing title/Titre du dessin

**SECOND FLOOR  
POWER & SYSTEMS PLAN  
LAN ROOM LAYOUTS**

Project No./No. du projet  
30/2014

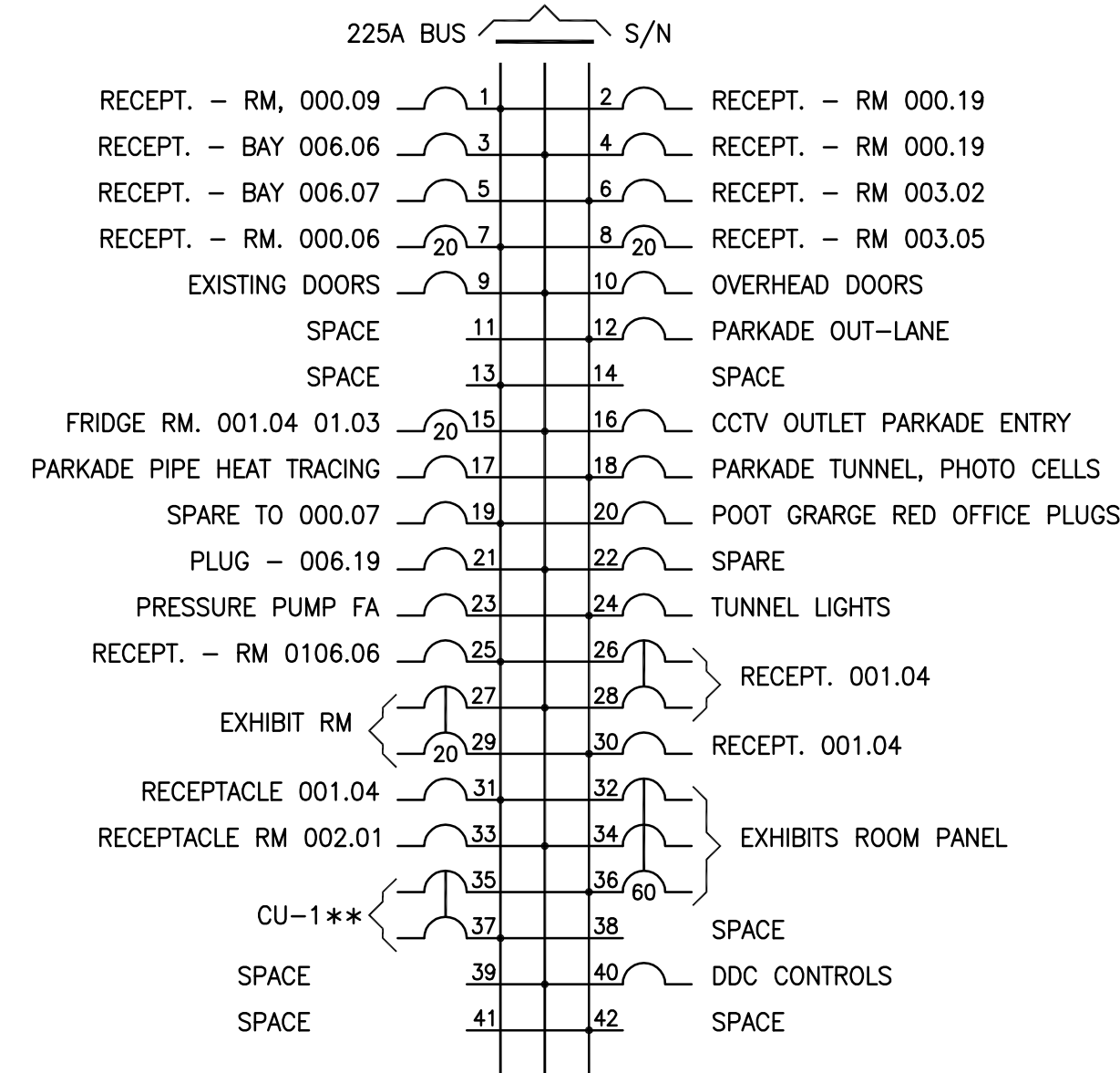
Sheet/Feuille  
E1.4

Revision no./La Révision no.  
0

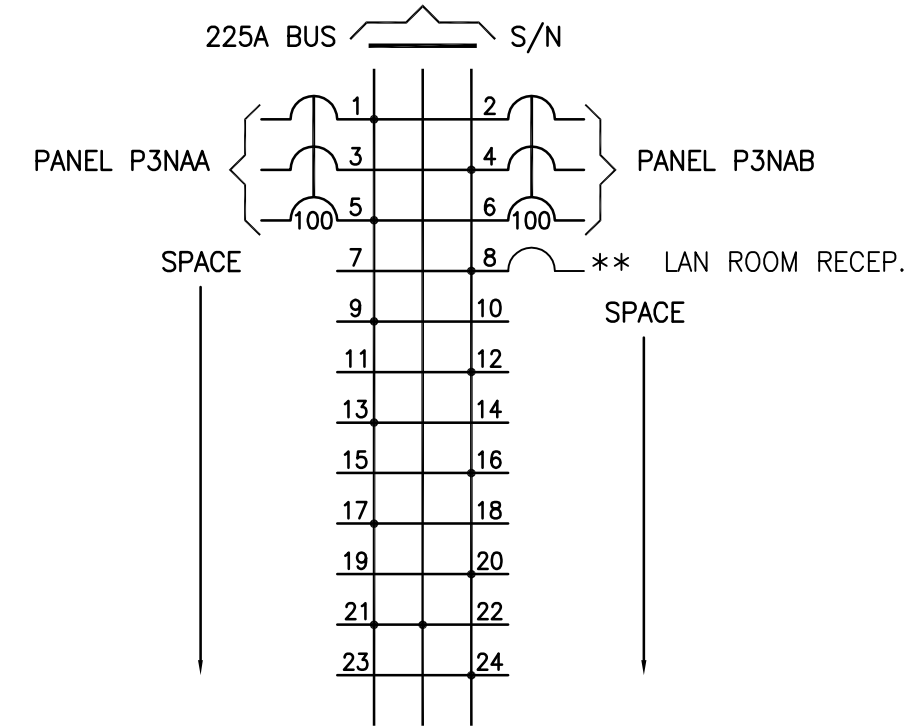




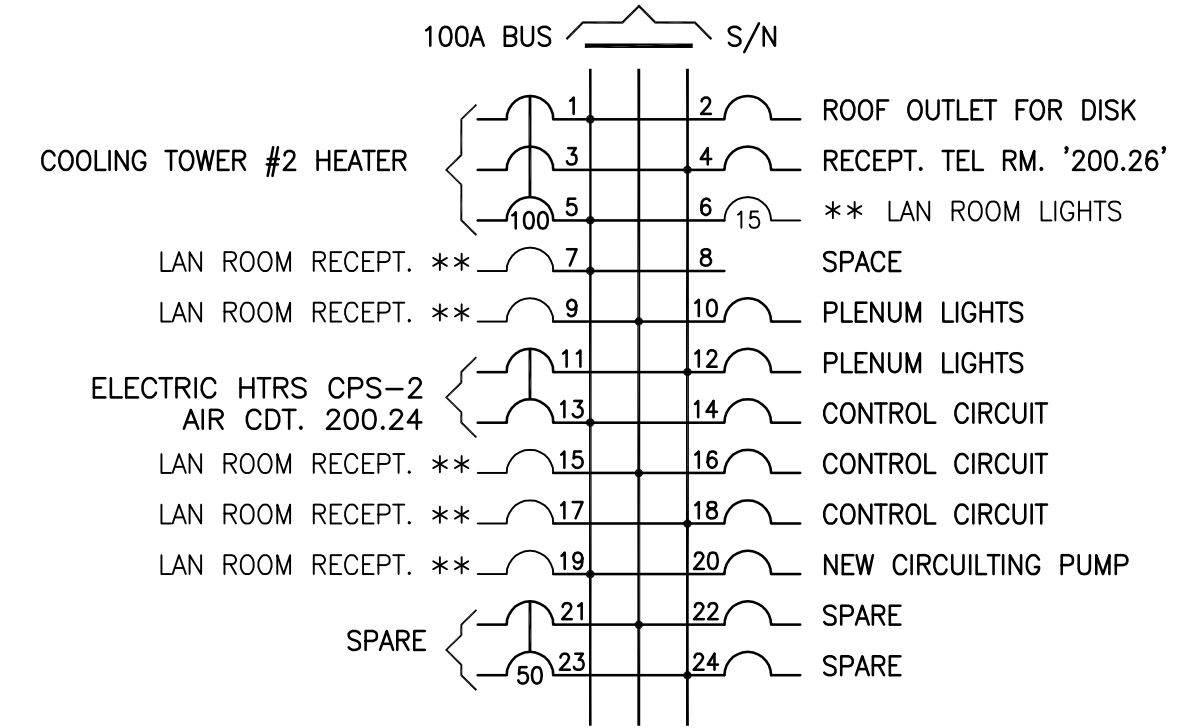
(LOWER FLOOR)  
EXISTING PANEL "POEA" (EMERG.)  
(120/208 V. -3φ-4W.)



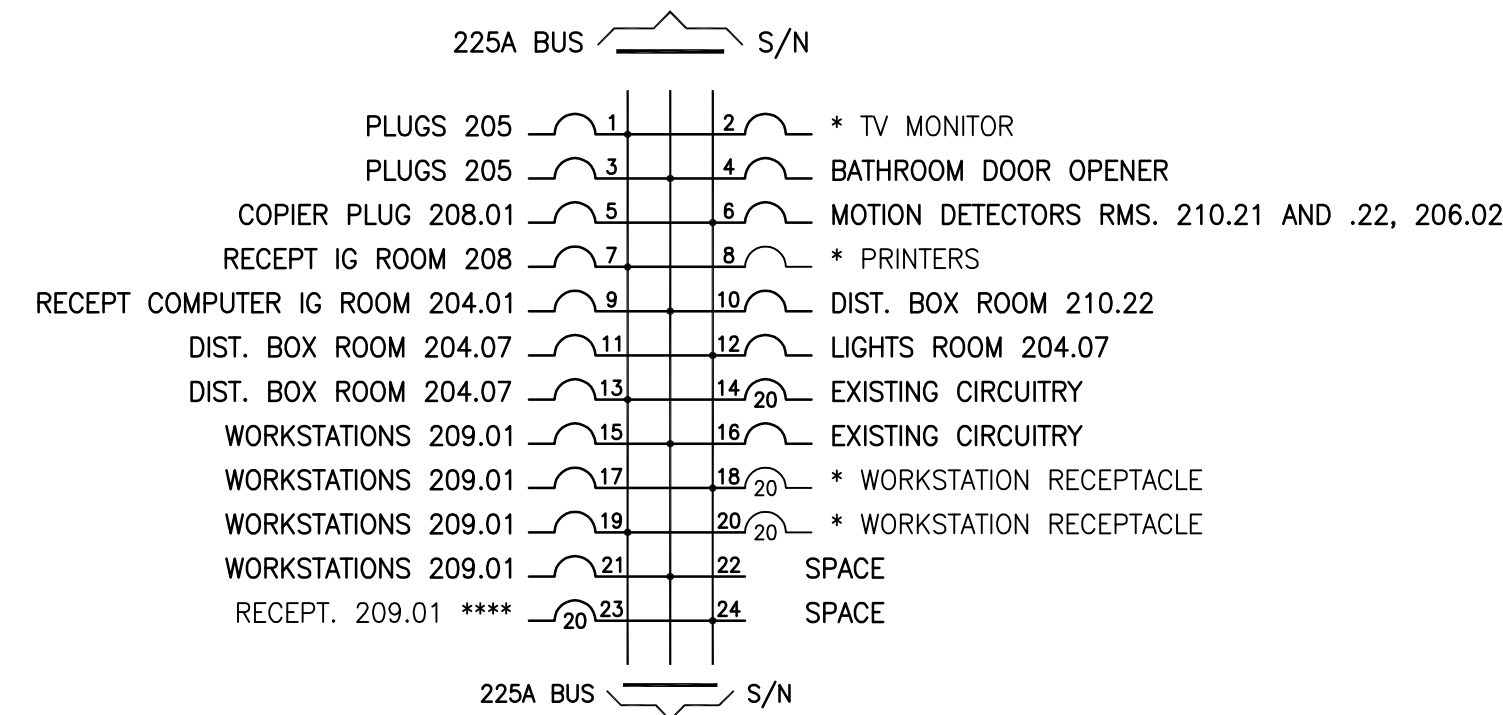
(2ND FLOOR)  
EXISTING PANEL "P3NA"  
(120/208V. -3φ-4W.)



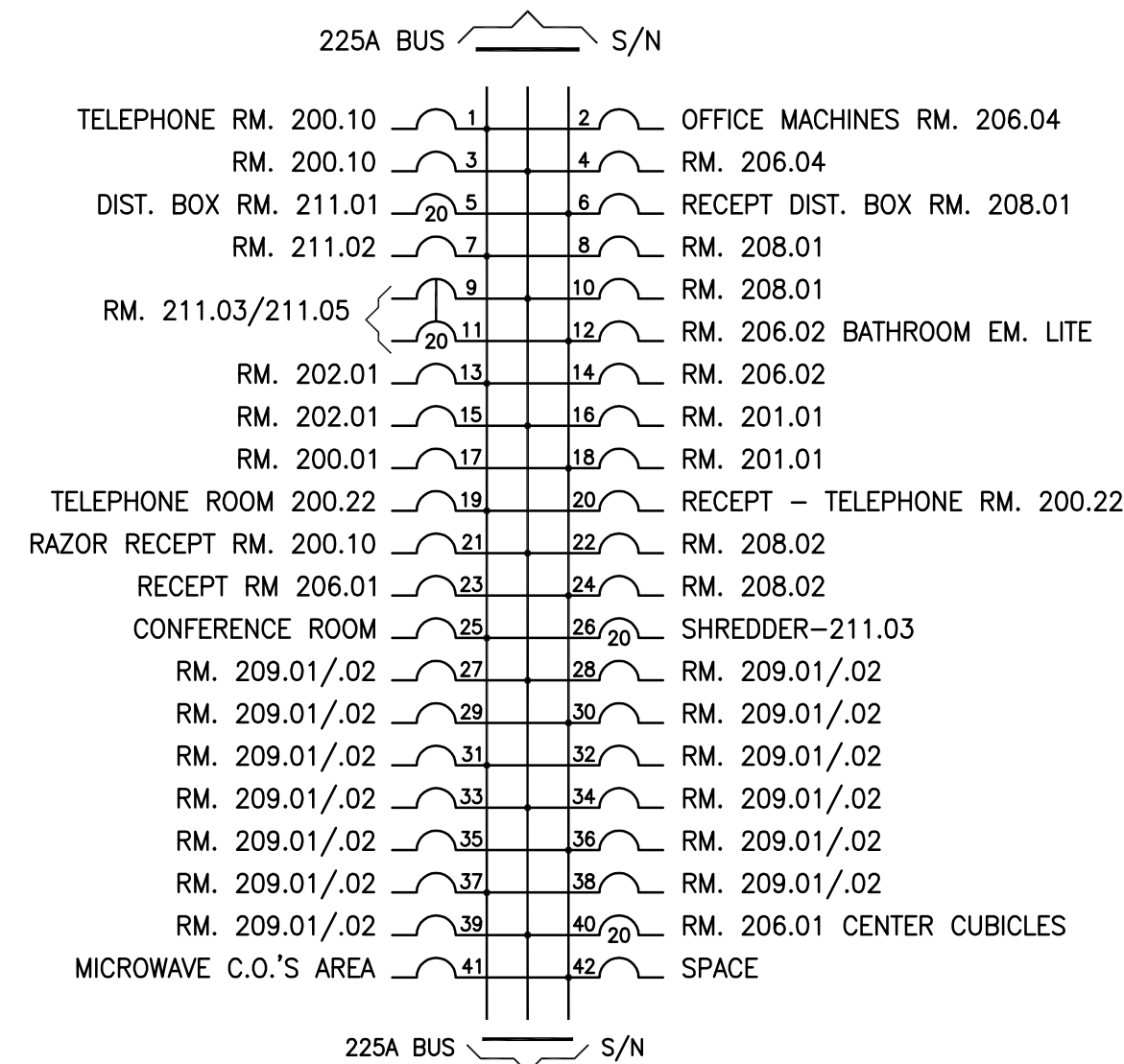
(2ND FLOOR)  
EXISTING PANEL "P2EM" (EMERG.)  
(120/208 V. -3φ-4W.)



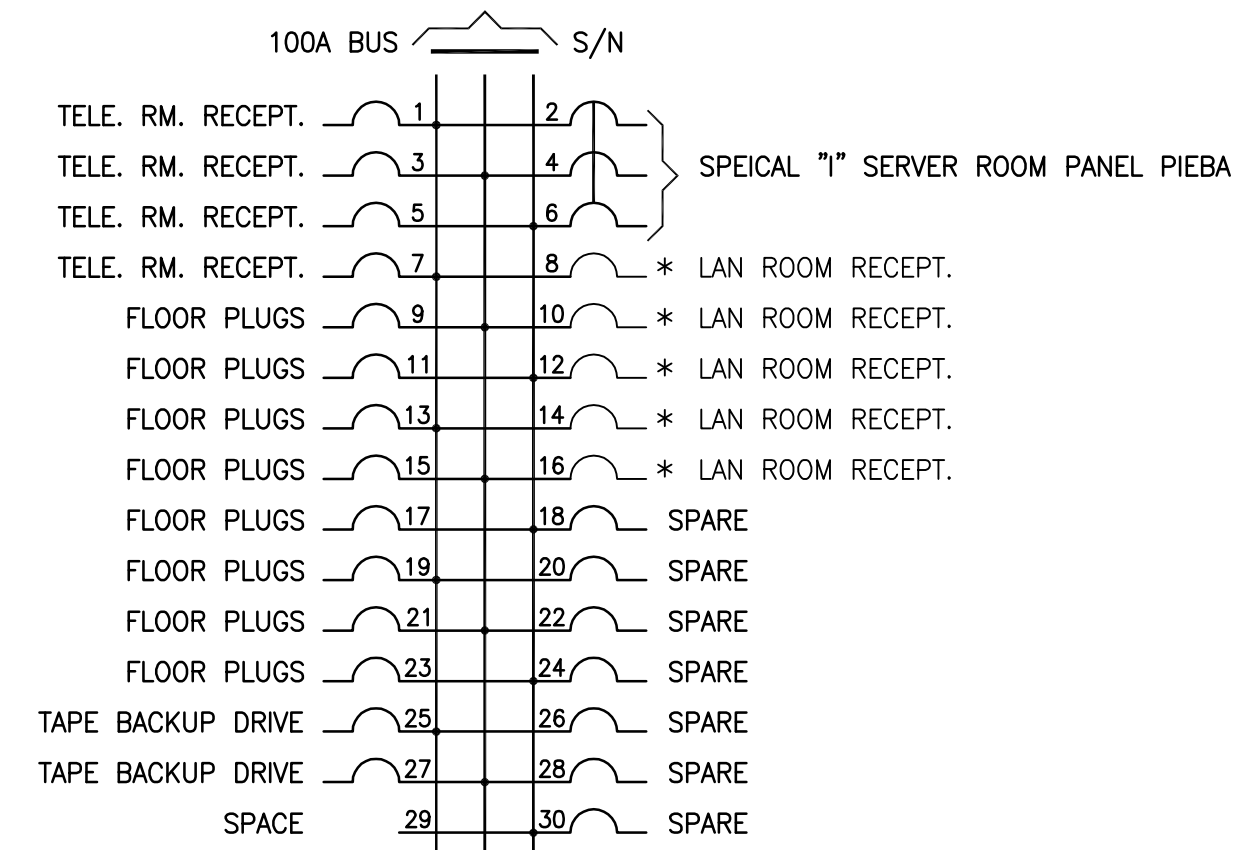
(SECOND FLOOR)  
EXISTING PANEL "P2EB"  
(120/208V. -3φ-4W.)



(SECOND FLOOR)  
EXISTING PANEL "P2NBC"  
(120/208V. -3φ-4W.)



(MAIN FLOOR)  
EXISTING PANEL "UPS 1C" (UPS)  
(120/208V. -3φ-4W.)



NOTE: THE EXISTING PANEL SCHEMATICS ARE SHOWN FOR REFERENCE ONLY. THE CIRCUIT NUMBERS AND DESCRIPTIONS DO NOT NECESSARILY REFLECT ACTUAL CIRCUITS. THE ELECTRICAL CONTRACTOR SHALL BE RESPONSIBLE TO VERIFY ALL EXISTING BRANCH CIRCUITRY MODIFIED IN THIS RENOVATION AND SHALL REUSE EXISTING BREAKERS MADE SPARE BY DEMOLITION TO ACHIEVE THE CIRCUITRY SHOWN ON THESE PLANS.

- \* INDICATES NEW BRANCH CIRCUIT FED FROM AN EXISTING BREAKER
- \*\* INDICATES NEW BRANCH CIRCUIT FED FROM A NEW BREAKER
- \*\*\* INDICATES EXISTING SPARE BREAKER TO BE REMOVED
- \*\*\*\* EXISTING BRANCH CIRCUIT SHALL BE RELOCATED AS NOTED ON DRAWINGS.

ALL PANEL DIRECTORIES AFFECTED BY THIS RENOVATION SHALL BE UPDATED TO SUIT NEW AND REVISED CIRCUITRY. CONTRACTOR SHALL COORDINATE SHUT DOWN FOR PANEL REPLACEMENT WITH OWNER PRIOR TO COMPLETING REPLACEMENT TO MINIMIZE SHUT DOWN TIME.



ASSOCIATION OF PROFESSIONAL ENGINEERS  
OF SASKATCHEWAN  
CERTIFICATE OF AUTHORIZATION  
RITENBURG & ASSOCIATES LTD.  
NUMBER 52  
PERMISSION TO CONSULT HELD BY:  
DISCIPLINE: ELECTRICAL  
SASK. REG. NO.: 9273  
SIGNATURE: [Signature]

DO NOT SCALE DRAWINGS

Revision/	Description/Description	Date/Date
0	TENDER PACKAGE	08/05

Client/client

Project title/Titre du projet

LAN AND OFFICE RENOVATION  
REGINA, SASKATCHEWAN

Approved by/Approuvé par

SBK

Designed by/Concept par

KAD

Drawn by/Dessiné par

KAD

Project Manager/Administrateur de Projets

Architectural and Engineering Resources Manager/  
Ressources Architectural et de Directeur d'ingénierie

Client/client

Drawing title/Titre du dessin

PANEL SCHEMATICS

Project No./No. du projet

30/2014

Sheet/Fauille

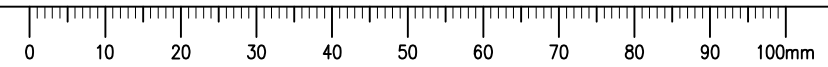
E2.1

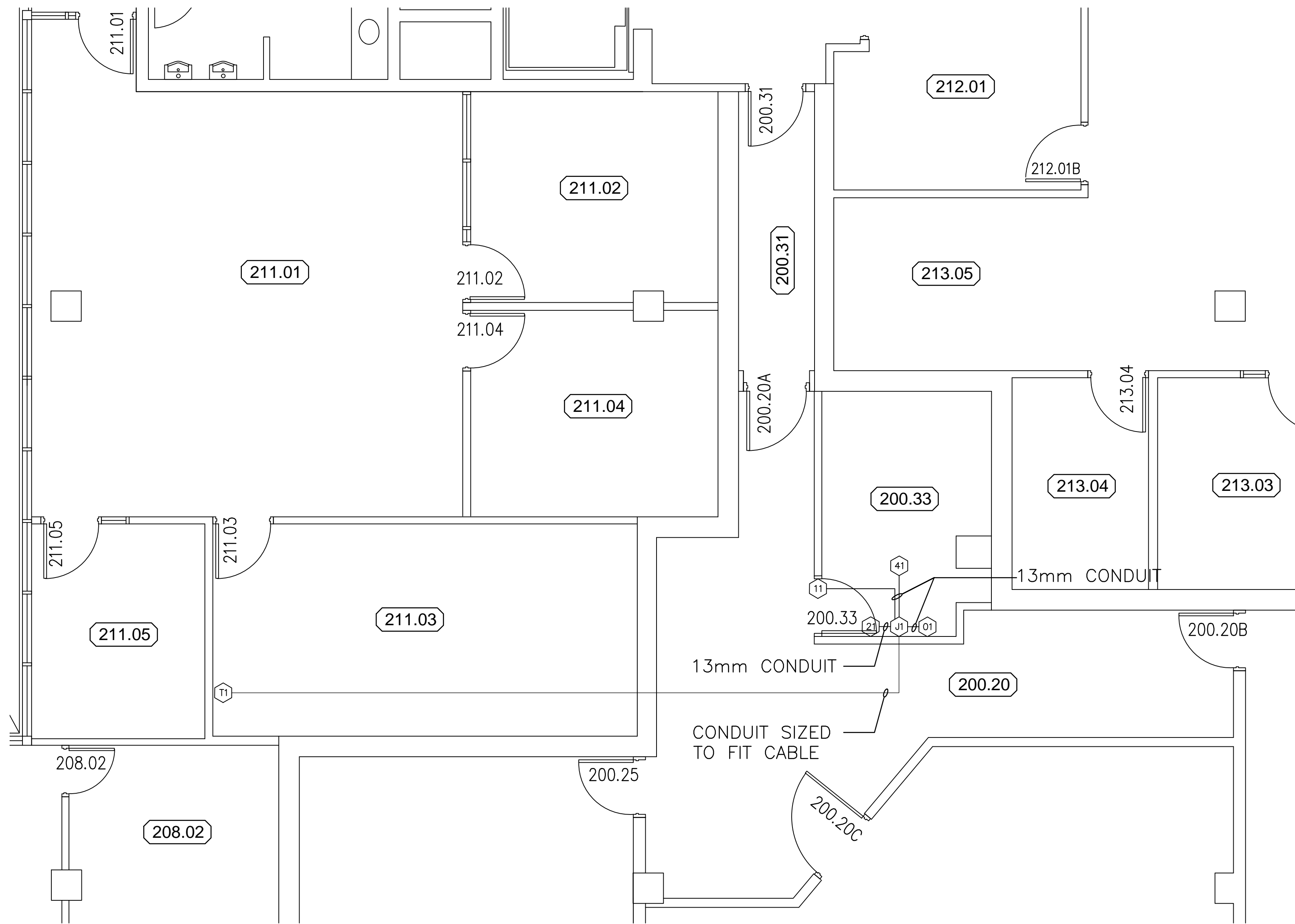
Revision no./  
La Révision  
no.

0

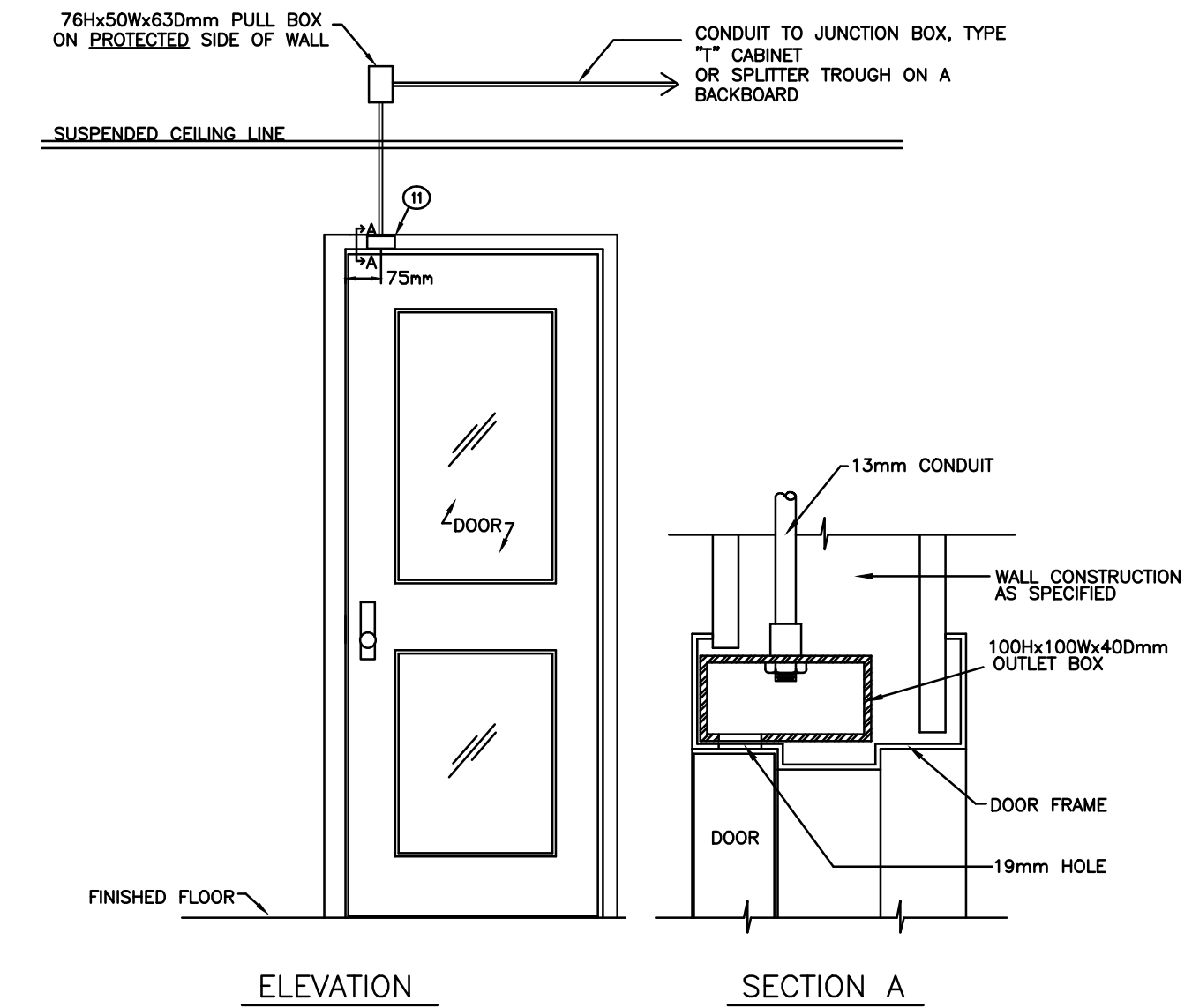


DRAWING PLOTTED 09/01/14  
FILE NAME: 302014 E2.1\_PANEL.dwg  
C:\AUTOCAD\DWG





1 PARTIAL SECOND FLOOR FLOOR PANEL LOCATIONS  
E3.1 1:50  
NORTH



NOTES:  
CONDUIT CONNECTOR TO BE MOUNTED AND FASTENED TO THE OUTLET BOX BY DOOR FRAME FABRICATOR.  
OUTLET BOX TO BE SPOT WELDED IN PLACE BY DOOR FRAME FABRICATOR.  
DRILL A 19MM HOLE AT 75MM (CENTER POINT) FROM THE EDGE OF THE DOOR CASING TO ALLOW FOR DOOR SWITCH INSTALLATION AND ACCESS TO WIRING.

1 PROTECTED DOOR DETAIL  
E3.1 NTS

**SEPW Architecture Inc.**  
100 - 3725 Pattee Street, Regina, SK S4S 6W8 ph: (306) 569-3255  
102 - 3718 Keweenaw Place, Saskatoon, SK S7P 0A6 ph: (306) 652-4457  
www.sepw.ca

**Ritenburg & Associates Ltd.**  
Consulting Electrical Engineers  
400-2222 Albert Street, Regina, SK S4P 2V2  
P: (306) 569-1303 F: (306) 569-1307  
Email: ra@ritenburg.com



ASSOCIATION OF PROFESSIONAL ENGINEERS  
OF SASKATCHEWAN  
CERTIFICATE OF AUTHORIZATION  
RITENBURG & ASSOCIATES LTD.  
NUMBER 52  
DISCIPLINE: ELECTRICAL  
REGISTRATION NO.: 9273

DO NOT SCALE DRAWINGS

Revision/Revision	Description/Description	Date/Date
0	TENDER PACKAGE	09/10/2015

Client/client

Project title/Titre du projet

**LAN AND OFFICE RENO  
REGINA, SASKATCHEWAN**

Approved by/Approuve par  
SBK

Designed by/Concept par  
KAD

Drawn by/Dessine par  
KAD

Project Manager/Administrateur de Projets

Architectural and Engineering Resources Manager/  
Ressources Architectural et de Directeur d'ingénierie

Client/client

Drawing title/Titre du dessin

**SECOND FLOOR  
SECURITY DETAILS**

Project No./No. du projet  
30/2014

Sheet/Feuille  
E3.1

Revision no./La Révision no.  
0



DRAWING, PRINTED ON 24" X 36" PAPER, FILE NAME: 300014\_E3.1.dwg, PLOT DATE: 03/11/2015