



RETOURNER LES SOUMISSIONS À:  
RETURN BIDS TO:

Agence Parcs Canada  
Module de réception des soumissions  
3, passage du Chien-d'Or  
Québec (QC) G1R 3Z8

**MODIFICATION # 1 – AMENDMENT # 1**

**DEMANDE DE PROPOSITION  
REQUEST FOR PROPOSAL**

Proposition à : l'Agence Parcs Canada  
Nous offrons par la présente de vendre à sa Majesté la Reine du chef du Canada, aux conditions énoncées ou incluses par référence dans la présente et aux annexes ci-jointes, les articles et les services énumérés ici et sur toute feuille ci-annexée, au(x) prix indiqué(s).

Proposal to: Parks Canada Agency  
We hereby offer to sell to Her Majesty the Queen in right of Canada, in accordance with the terms and conditions set out herein, referred or attached hereto, the supplies and services listed herein or on any attached sheets at the price(s) set out therefore.

**Raison sociale et adresse du fournisseur/de l'entrepreneur  
Vendor/Firm Name and Address**

<b>Sujet - Title :</b> Remplacement des CCM des piliers #1 à #5 – Barrage du Canal de Saint-Ours – LHNC du Canal de Saint-Ours – Replacement of MCC in Piers #1 to #5 Saint-Ours Canal Dam – Saint-Ours Canal	
<b>No. de l'invitation - Solicitation No.</b> <b>5P300-15-5281/A</b>	<b>Date</b> 24 août 2015 / August 24, 2015
<b>No de reference de SEAG -GETS Reference No.</b>	
<b>No. de référence du client - Client Reference No. –</b>	
<b>L'invitation prend fin – Solicitation Closes</b>  <b>à – at 14:00 / 2 :00PM le – on 27 août 2015 August 27, 2015</b>	<b>Fuseau horaire - Time Zone</b>  <b>Heure avancée de l'Est (HAE) Eastern Daylight Time (EDT)</b>
<b>Adresser toute demande de renseignements à : - Address Inquiries to:</b>  <b>Marilyn Bernier – <a href="mailto:CSQ.Contrats@pc.gc.ca">CSQ.Contrats@pc.gc.ca</a></b>	
<b>No de téléphone - Telephone No.</b> <b>(418) 648-4569</b>	<b>No de FAX: - Fax No.</b> <b>(418) 648-5392</b>
<b>Destinations des biens, services et construction: Destination of Goods, Services, and Construction:</b>	
<b>Raison sociale et adresse du fournisseur/de l'entrepreneur : Vendor/Firm Name and Address</b>	
<b>No de téléphone: - Telephone No. N° de télécopieur: - Facsimile No.</b>	
<b>Nom et titre de la personne autorisée a signer au nom du fournisseur/ de l'entrepreneur (taper ou écrire en caractères d'imprimerie) Name and title of person authorized to sign on behalf of the Vendor/Firm (type or print)</b>	
_____	_____
<b>Nom / Name</b>	<b>Titre /Title</b>
_____	_____
<b>Signature</b>	<b>Date</b>



## MODIFICATION DE SOUMISSION No.1 AMENDMENT TO TENDER

Dossier No – File No

5P300-15-5281/A

Projet - Project

Remplacement des CCM des piliers #1 à #5 – Barrage du Canal de Saint-Ours –  
LHNC du Canal de Saint-Ours /Replacement of MCC in Piers #1 to #5 – Saint-Ours  
Canal Dam – Saint-Ours Canal

Date limite au plus tard - Closing Date  
on or before

Jeudi, 27 août 2015 à 14 heures  
Tuesday, August 27, 2015 at 2 :00PM

Date d'émission – Date of issue

24 août 2015, August 24, 2015

OBJET DE LA PRÉSENTE MODIFICATION – THE PURPOSE OF THIS AMENDMENT IS TO GIVE EFFECT TO THE FOLLOWING

### ADDENDA # 1 – ADDENDUM # 1

Voir documents joints  
See attached documents

TOUTES LES AUTRES CONDITIONS INCLUSES DANS LES INSTRUCTIONS DE TRAVAIL DEMEURENT LES MÊMES / ALL OTHER CONDITIONS INCLUDED IN THE WORK INSTRUCTIONS REMAIN THE SAME.

Par la présente nous reconnaissons avoir reçu la version modifiée des instructions et nous attestons avoir modifié notre soumission en conséquence.

We hereby acknowledge receipt of the amendment instructions and confirm that provisions therefore have been made in our tender.

Pour être prise en considération, toute soumission devra être accompagnée d'un exemplaire signé de la présente modification. Si votre soumission a déjà été envoyée, veuillez signer et envoyer cette modification par télécopieur/courriel avec toutes révisions faites à votre prix de soumission, à nos bureaux avant la date limite.  
Télécopieur: 418-648-5392

Signed copy of this amendment must accompany each tender in order that the tender be considered.  
If your submission has already been sent, please sign and send this amendment by fax / email with any revisions made to your bid price, at our office before the deadline. Fax: 418-648-5392.

Signé - Signed	Titre - Title	Date
Société - Company		

BARRAGE DU CANAL DE SAINT-OURS REMPLACEMENT DES CCM DES PILIERS #1 À #5 L.H.N.C DU  
CANAL DE SAINT-OURS / SAINT-OURS CANAL DAM REPLACEMENT OF MCC IN PIERS #1 TO #5  
SAINT-OURS CANAL N.H.S.C.

Addenda #1 / Addendum #1

1.

Section 26 00 00, 1.2.6.6

La temporisation ajustable du relais doit être corrigée par :

*Le relais doit permettre une temporisation ajustable entre 1 min et 30 min.*

The adjustable delay of relay must be updated by:

*The relay must provide an adjustable delay time between 1 min and 30 min.*

**Produit/Product:**

Description des composantes ou équivalent approuvé/Components description  
or equivalent approved

ITEM	DESCRIPTION
TMR6-X-00-120	Relais Eaton TMR6 True Off Delay Relay / TMR6 True Off Delay Eaton Relay
D3PA2	Base de relais/Socket relay
D65CHDS	Ressort de retenu / Hold-down spring

Modifications de la BJ-C1A / Modifications on BJ-C1A

- a. Positionnement du relais/ Relay location
- b. Terminaux fusible d'alimentation 120 Vca et de branchement / Fused 120 Vac terminal and wiring terminals.
- c. Alimentation 120 Vca depuis le panneau de distribution localisé dans la même armoire. /120 Vac Power Supply from distribution panel located in the same cabinet
- d. Modification des branchements entre l'ATS et la génératrice pour inclure le temporisateur/ Wiring modifications between the ATS and the generator to insert timer relay.

2.

Fourniture et installation de deux (2) prises indépendantes 120 Vca 20 ampères extérieures avec couvercle pour chacun des piliers 1 à 6, c/a deux (2) nouveaux disjoncteurs 20 Amp câblage 2 x 2c. #12 AWG Teck-90 dans PD\_CCMxx.

Supply and install two (2) outdoor independent sockets 120 VAC, 20 amps with cover for each of the piers # 1to 6, c/w two (2) new 20 amps breakers and 2 x 2c. #12 AWG wiring Teck-90 connected in PD\_CCMxx

Le prix doit être inclus à l'item suivant de chacun des piliers / Quotation shall be included in the following article of each pier

*« Remplacement prise soudeuses M1-M2-M3/ M1-M2-M3 welding outlets replacement »*

Pour le pilier #6, inclure le prix dans l'article du pilier #5/ For pier #6, include quotation in article of pier #5.

3.

Précision apportée quant aux travaux de remplacement des câbles d'alimentation du CCM #1 entre la salle Mécanique C-1 Nord et le pilier#1. L'Entrepreneur devra inclure le démantèlement des câbles existants et des deux (2) conduits électriques corrodés entre la salle C-1 et le pilier #1. Le démantèlement de ces conduits permettra de réutiliser les ouvertures pour le passage des nouveaux câbles Teck. Après installation des câbles, l'entrepreneur devra étancher les ouvertures au niveau de la salle C-1 et au niveau du pilier#1 selon les prescriptions du plan 121-18486-03-E-003.

Clarification regarding the replacement work of CCM # 1 power cables between the C-1 North mechanics room and pier # 1. The Contractor shall include the dismantling of existing cables and two (2) corroded electrical pipes between C-1 room and pier # 1. The removal of these pipes will reuse the openings for the passage of the new Teck cables. After cable installation, the contractor will seal the openings at the C-1 at the room and pillar # 1 as prescribed in 121-18486-03 E-003 plan.

L'entrepreneur devra prévoir au besoin des profilés additionnels afin de supporter les câbles Teck adéquatement en conformité avec les prescriptions du code électrique.

The Contractor shall provide necessary additional profiles to support the Teck cables properly in accordance with the electrical code requirements.

Tous les coûts devront être inclus à l'article 2.3.2 du bordereau de soumission.

All costs should be included in section 2.3.2 of the bid form.

4.

Voir copie des dessins d'atelier des CCM acquis par Parcs Canada dans le but de fournir les CCM#1 et CCM#2 (voir dessins ci-joint). L'entrepreneur doit porter une attention particulière au CCM#1 en se référant au schéma unifilaire 121-1486-03-E-102.

See copy of shop drawings CCM acquired by Parks Canada to provide the CCM # 1 and # 2 CCM (see attached drawings). The Contractor must pay particular attention to the CCM # 1 by referring to the line diagram 121-1486-03-E-102.



by Schneider Electric

Job Name: PROJ: CANAL ST-OURS  
Job Location: CHAMBLY, QC

Square D Quotation #: 36143402  
Quotation Revision #:  
Sales Contact: ins WD  
Sales Contact Location: 807

Purchaser: DUBO ELECTRIQUE LTEE  
Purchaser PO #:

Customer: RIAL ELECTRIQUE  
Customer PO #:

User: PARC CANADA  
User Location:

Architect:  
Cons. Engineer:

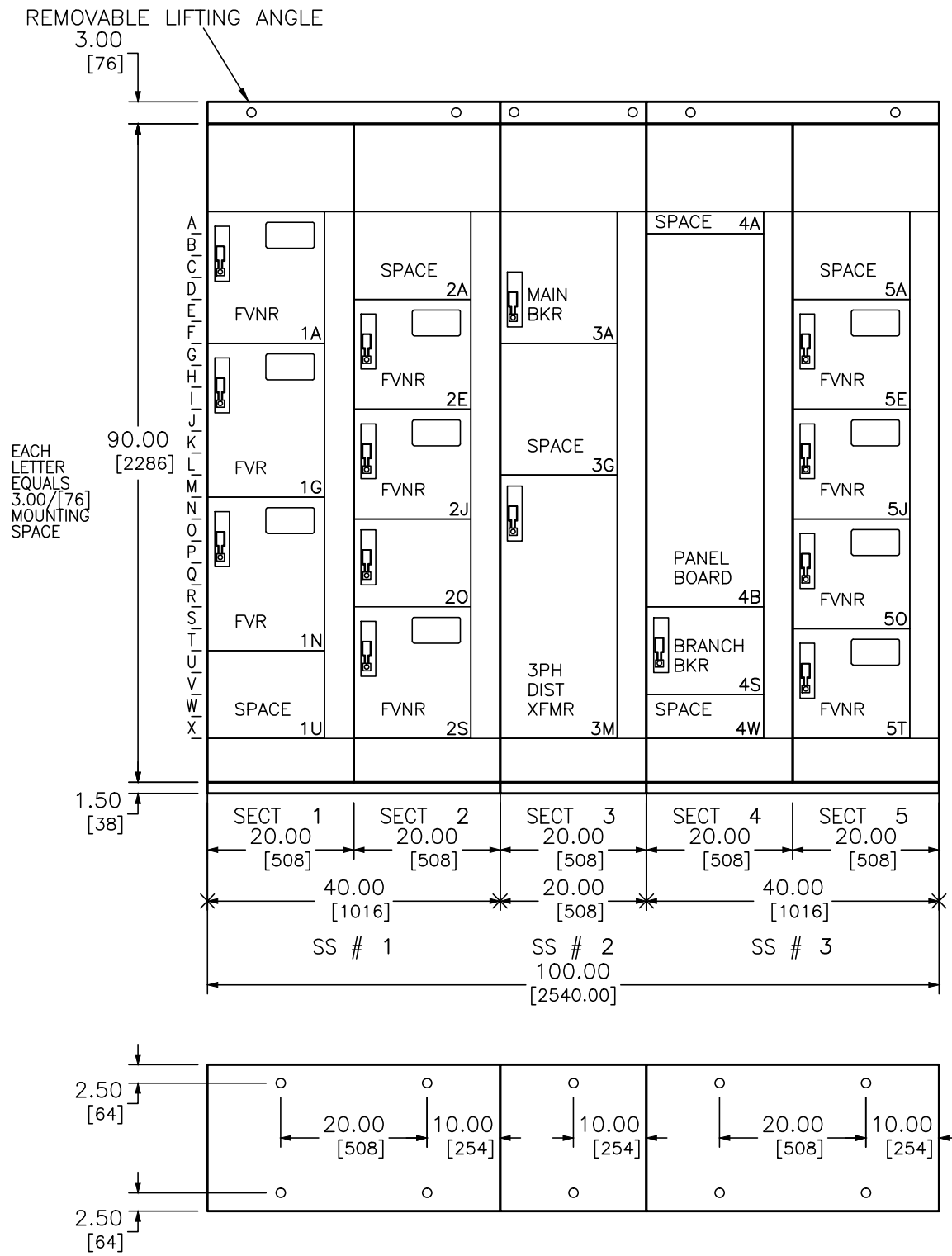
Drawing Status: RECORD

## TABLE OF CONTENTS

SQUARE D FACTORY ORDER NUMBER: 36143402-001

<u>Equipment Designation</u>	<u>Equipment Type</u>	<u>Drawing Type</u>	<u>Drawing Number</u>	<u>Page</u>	<u>Revision Level</u>			
CCM-4 Pilier # 3	MODEL 6 MCC	ELEVATION	F36143402-001-01	1	-			
			F36143402-001-01	2	-			
			F36143402-001-01	3	-			
		ONE LINE DIAGRAM	NETWORK	ENVIRONMENTAL	O36143402-001-01	1	-	
					C36143402-001-01	1	-	
					C36143402-001-01	2	-	
					P36143402-001-01	1	-	
					UNIT INFORMATION	I36143402-001-01	1	-
						I36143402-001-01	2	-
						I36143402-001-01	3	-
		I36143402-001-01	4	-				
		ELEMENTARY	E36143402-001-01	1	-			
			E36143402-001-02	1	-			
			E36143402-001-03	1	-			
			E36143402-001-04	1	-			
			E36143402-001-05	1	-			
			E36143402-001-06	1	-			
			E36143402-001-07	1	-			
			E36143402-001-08	1	-			
			E36143402-001-09	1	-			
E36143402-001-10	1		-					

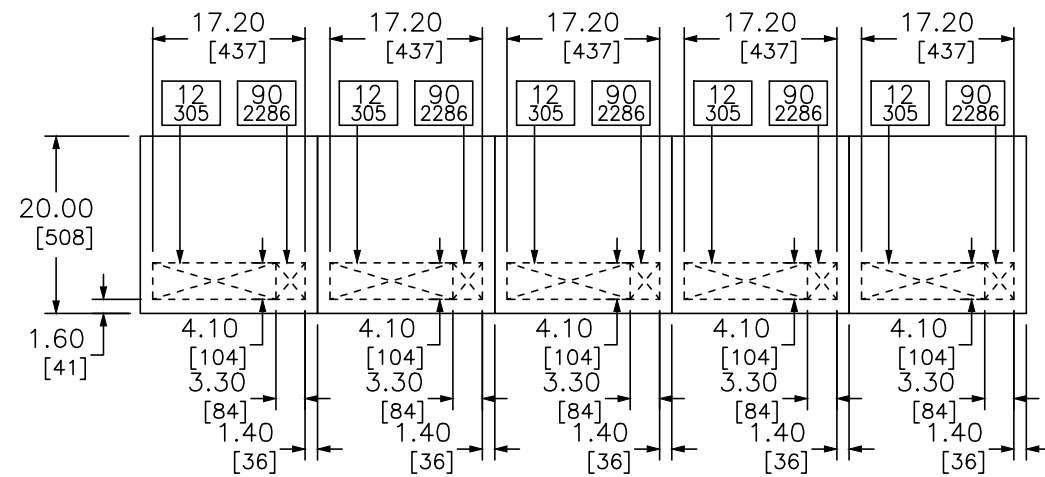
REV	DESCRIPTION	BY	DATE						
-	----	---	---/---/---	-	----	--	---/---/---	-	----
-	----	---	---/---/---	-	----	--	---/---/---	-	----



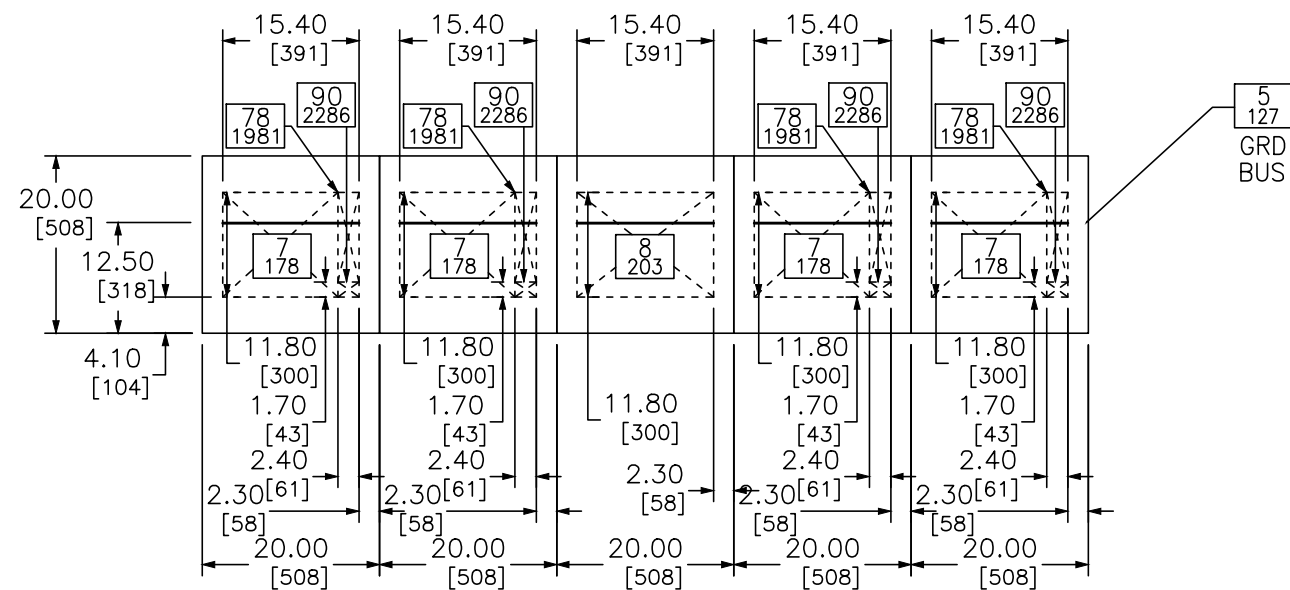
DUAL DIMENSIONS: INCHES  
MILLIMETERS

JOB NAME:	PROJET: CANAL ST-OURS	EQUIPMENT DESIGNATION:	CCM-4 PILIER # 3
JOB LOCATION:	CHAMBLY, QC	EQUIPMENT TYPE:	MODEL 6 MOTOR CONTROL CENTER
DRAWN BY:	CAD	DRAWING TYPE:	ELEVATION
ENGR:	DU		
DATE:	FEBRUARY 18, 2015	by Schneider Electric	
DRAWING STATUS:	RECORD	DWG# F36143402-001-01	PG 1 OF 3 REV -

REV	DESCRIPTION	BY	DATE						
-	----	---	---/---/---	-	----	--	---/---/---	-	----
-	----	---	---/---/---	-	----	--	---/---/---	-	----




TOP VIEW



FLOOR VIEW

DUAL DIMENSIONS: INCHES  
MILLIMETERS

CROSSED AREA REPRESENTS CONDUIT ENTRY  
AREA. NUMBERS IN BOXES INDICATE VERTICAL  
CLEARANCE TO NEAREST OBSTRUCTION.

JOB NAME:	PROJET: CANAL ST-OURS	EQUIPMENT DESIGNATION:	CCM-4 PILIER # 3
JOB LOCATION:	CHAMBLY, QC	EQUIPMENT TYPE:	MODEL 6 MOTOR CONTROL CENTER
DRAWN BY:	CAD	DRAWING TYPE:	ELEVATION
ENGR:	DU		
DATE:	FEBRUARY 18, 2015	by Schneider Electric	
DRAWING STATUS:	RECORD	DWG# F36143402-001-01	PG 2 OF 3 REV -



REV	DESCRIPTION	BY	DATE								
-	----	--	---/---/---	-	----	--	---/---/---	-	----	--	---/---/---

**GENERAL NOTES**

iMCC–Network

**PRODUCT DESCRIPTION AND RATINGS**

**POWER SYSTEM DATA:**

600V 3PH 3W 60Hz  
 SHORT CIRCUIT RATING: 42kA  
 POWER ENTERS: Main Breaker Top Section 3  
 CONTROL POWER: 120Vac

**BUS SYSTEM DATA:**

MAIN HORIZONTAL BUS: 800 Amp Copper/Tin Plated / 1.5”  
 BUS BRACING: 42kA  
 VERTICAL BUS: 600 Amp Tin Plated Copper  
 HORIZONTAL GROUND BUS: .25” X 1.0” (6.35mm X 25.4mm) Tin Plated Copper  
 Units Securely Grounded To Structure

**ENCLOSURE DATA:**

ENCLOSURE TYPE: 20” DEEP Type 12  
 EXTERIOR COLOR: Electrodeposition Finish ANSI 49 Medium Light Grey  
 INTERIOR COLOR: Electrodeposition Finish White  
 REMOVABLE 3” [76mm] LIFTING ANGLE

**STRUCTURE MODIFICATIONS:**


Ground Bus Lug  
 Rodent Barriers 1,5  
 Manual Bus Shutters 1,2,3,4,5  
 Fishtape Barriers 1,2,3,4,5  
 Communication Barriers 1,2,3,4,5  
 Main Section Partition 2,3  
 600A Vertical Bus 1,2,3,4,5  
 Copper Vertical Ground Bus 1,2,3,4,5  
 Wire Retainers 1,2,3,4,5  
 Strip Heater 1,2,4,5  
 Heater Thermostat (Red Dial) 2

**EQUIPMENT WEIGHT:**

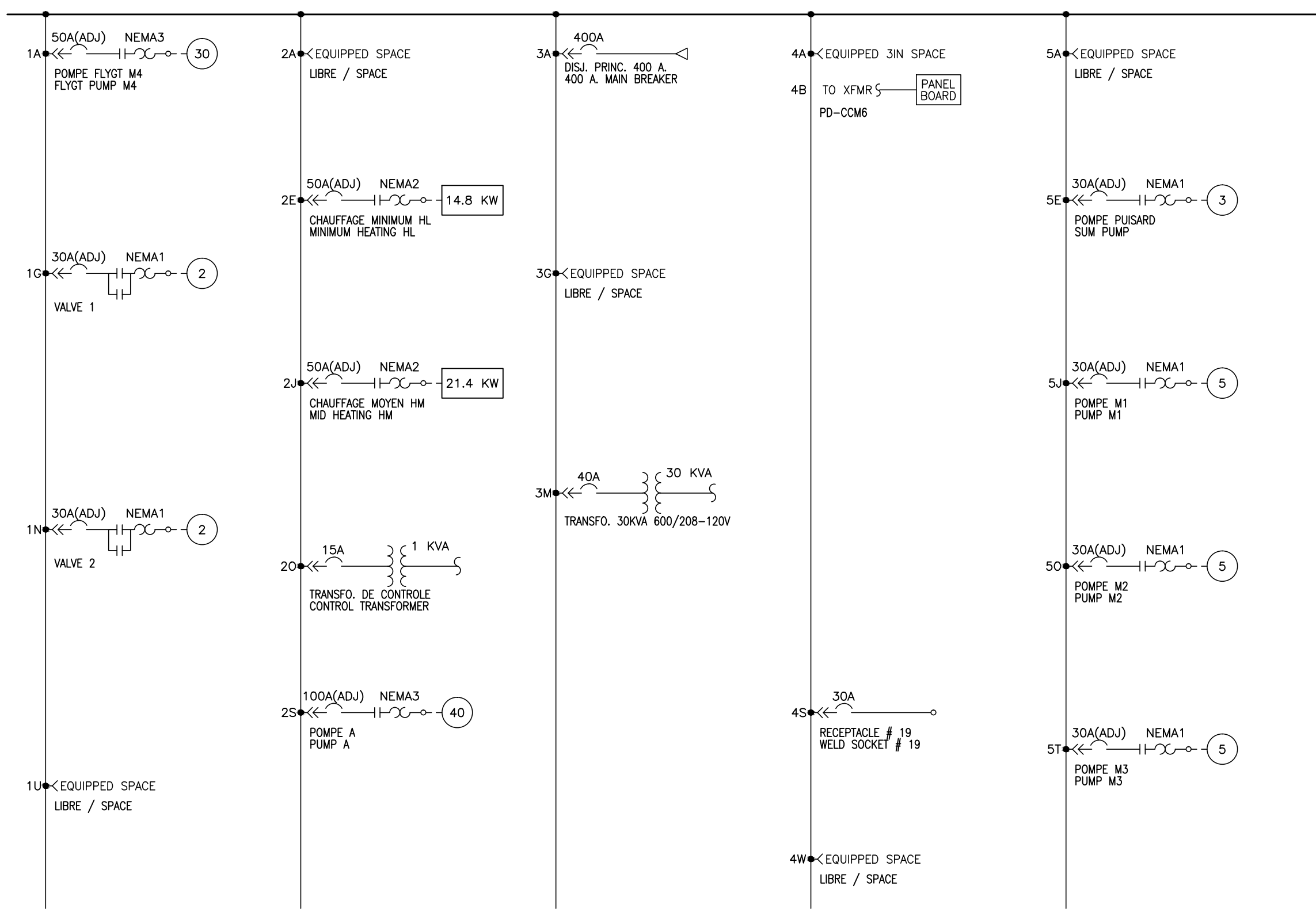
SHIPPING SPLIT # 1: 1500.00 Lbs. (680.40 Kg.)  
 SHIPPING SPLIT # 2: 875.00 Lbs. (396.90 Kg.)  
 SHIPPING SPLIT # 3: 1500.00 Lbs. (680.40 Kg.)  
 TOTAL LINEUP WEIGHT (APPROX): 3875.00 Lbs. (1757.70 Kg.)

**PRODUCT ACCESSORIES:**

TeSys T Handheld Display  
 Certified Test Report  
 DeviceNet iMCC Network

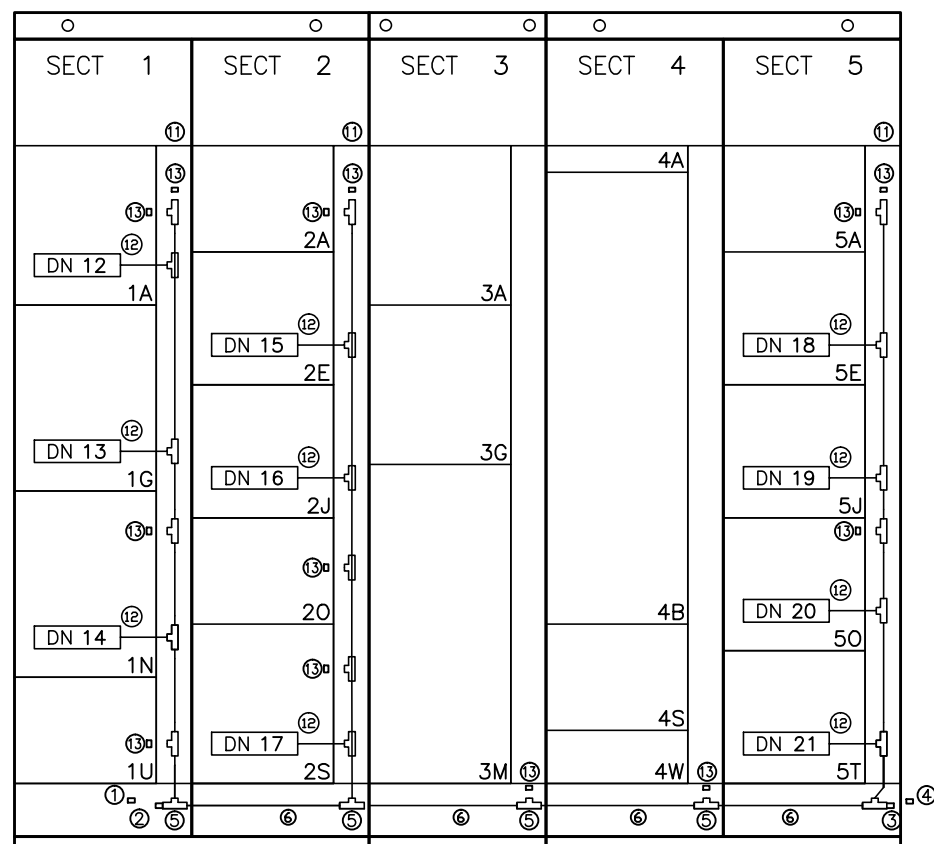
JOB NAME:	PROJET: CANAL ST-OURS	EQUIPMENT DESIGNATION:	CCM-4 PILIER # 3
JOB LOCATION:	CHAMBLY, QC	EQUIPMENT TYPE:	MODEL 6 MOTOR CONTROL CENTER
DRAWN BY:	CAD	DRAWING TYPE:	ELEVATION
ENGR:	DU		
DATE:	FEBRUARY 18, 2015	<small>by Schneider Electric</small>	
DRAWING STATUS:	RECORD	DWG# F36143402-001-01	PG 3 OF 3 REV -

REV	DESCRIPTION	BY	DATE						
-	----	---	---/---/---	-	----	--	---/---/---	-	----
-	----	---	---/---/---	-	----	--	---/---/---	-	----



JOB NAME:	PROJET: CANAL ST-OURS	EQUIPMENT DESIGNATION:	CCM-4 PILIER # 3
JOB LOCATION:	CHAMBLY, QC	EQUIPMENT TYPE:	MODEL 6 MOTOR CONTROL CENTER
DRAWN BY:	CAD	DRAWING TYPE:	ONE LINE DIAGRAM
ENGR:	DU		
DATE:	FEBRUARY 18, 2015		
DRAWING STATUS:	RECORD	DWG#	036143402-001-01
		PG	1 OF 1
		REV	-

REV	DESCRIPTION	BY	DATE						
-	----	---	---/---/---	-	----	--	---/---/---	-	----
-	----	---	---/---/---	-	----	--	---/---/---	-	----



DEVICENET NETWORK LAYOUT

NETWORK PART NUMBERS

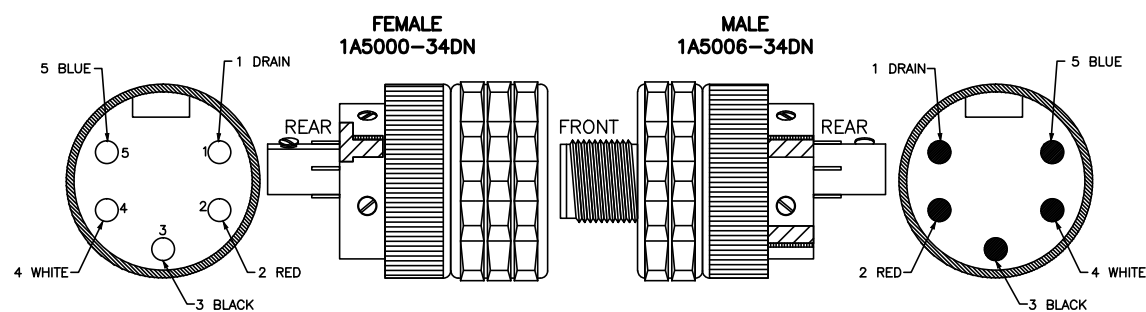
SYMBOL	DESCRIPTION	PART NUMBER
1	DEVICENET MALE FIELD ATTACHABLE CONNECTOR - THICK	1A5006-34DN
2	DEVICENET MALE TERMINATOR - THICK	DN100
3	DEVICENET FEMALE TERMINATOR - THICK	DN150
4	DEVICENET FEMALE FIELD ATTACHABLE CONNECTOR - THICK	1A5000-34DN
5	DEVICENET BUS DROP STANDARD TEE - THICK/THICK/THICK	DN3020
6	DEVICENET 20" EXTENSION CABLE - THICK	80420-918-01
7	DEVICENET 25" EXTENSION CABLE - THICK	80420-919-01
8	DEVICENET 30" EXTENSION CABLE - THICK	80420-920-01
9	DEVICENET 35" EXTENSION CABLE - THICK	80420-921-01
10	DEVICENET 2M CABLE MALE/PIGTAIL CORDSET - THICK	DNE01A-M020
11	DEVICENET 6 BUCKET CONFIGURATION CABLE - THICK	80420-915-50
12	DEVICENET 36" MALE STRAIGHT DROP CABLE - THICK	80420-916-01
* 13	DEVICENET MALE CAP ( PLASTIC ) - THICK	D970CAPR
DN-X	DEVICENET MODULE - ADDRESS	
DN-PS1	24VDC 10A POWER SUPPLY (3 PHASE)	2938617
DN-PS2	24VDC 10A POWER SUPPLY (3 PHASE)	80420-923-01

NETWORK COMMUNICATION PARAMETERS

PROTOCOL	DEVICENET
BAUD RATE	250 K

\* NOTE! REFER TO THE UNIT ELEMENTARY DIAGRAMS FOR COMPONENT COMMUNICATION CONNECTIONS

FIELD ATTACHABLE CONNECTOR

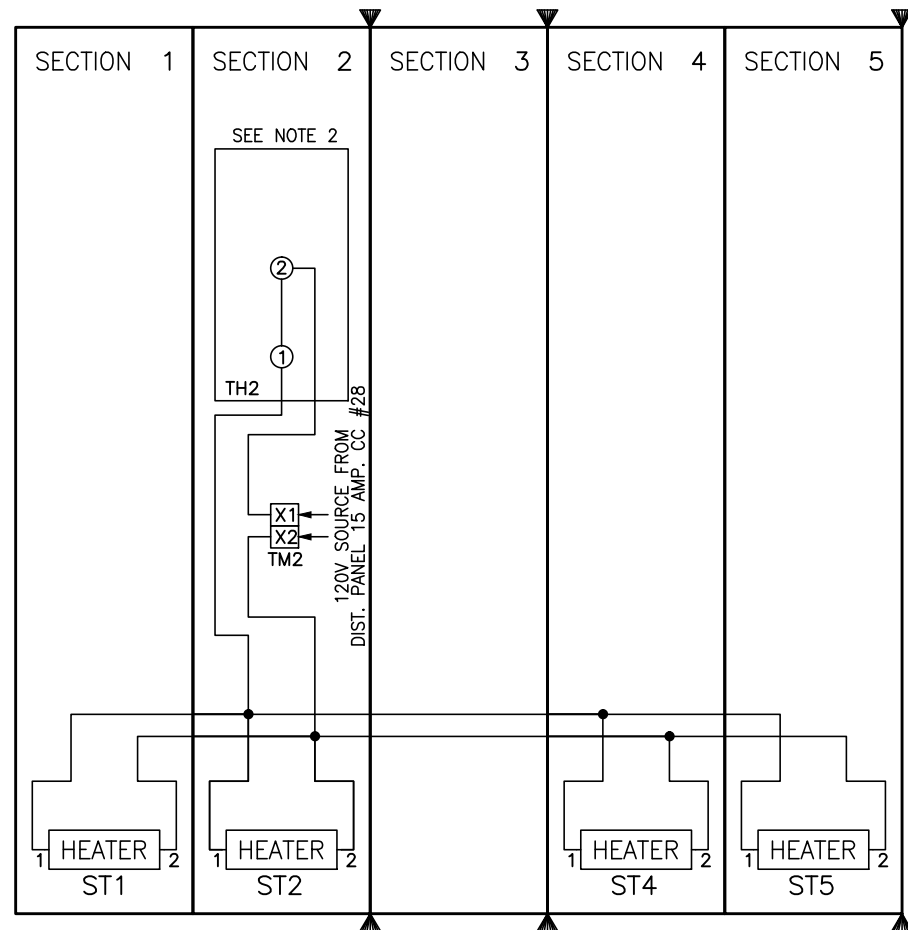


WIRE COLOR	FIELD CONNECTOR	SLAVE DEVICE USE
BARE(SHIELD)	PIN #1	SHIELD
RED	PIN #2	V+
BLACK	PIN #3	V-
WHITE	PIN #4	CAN_H
BLUE	PIN #5	CAN_L

NOTE: FOR FULL SECTION UNITS, USE (1) 80420-921-01 + (1) DN3020 IN THE VERTICAL WIREWAY

JOB NAME:	PROJET: CANAL ST-OURS	EQUIPMENT DESIGNATION:	CCM-4 PILIER # 3
JOB LOCATION:	CHAMBLY, QC	EQUIPMENT TYPE:	MODEL 6 MOTOR CONTROL CENTER
DRAWN BY:	CAD	DRAWING TYPE:	NETWORK
ENGR:	DU		
DATE:	FEBRUARY 18, 2015		
DRAWING STATUS:	RECORD	DWG#	C36143402-001-01

REV	DESCRIPTION	BY	DATE						
-	----	---	---/---/---	-	----	--	---/---/---	-	----
-	----	---	---/---/---	-	----	--	---/---/---	-	----




NOTE 1: STRIP HEATER (200W, 120V) HOTWATT #CS12 OR EQUIVALENT. CUSTOMER MUST PROVIDE PROTECTIVE POWER SUPPLY.


NOTE 2: STRIP HEATER THERMOSTAT (RED DIAL) IS LOCATED IN VERTICAL WIRE TROUGH. (32°F-140°F, 250VAC MAX) STEGO CONTROLS #01140.9-00.

JOB NAME:	PROJET: CANAL ST-OURS	EQUIPMENT DESIGNATION:	CCM-4 PILIER # 3
JOB LOCATION:	CHAMBLY, QC	EQUIPMENT TYPE:	MODEL 6 MOTOR CONTROL CENTER
DRAWN BY:	CAD	DRAWING TYPE:	ENVIRONMENTAL
ENGR:	DU		
DATE:	FEBRUARY 18, 2015		
DRAWING STATUS:	RECORD	DWG# C36143402-001-01	PG 2 OF 2 REV -




REV	DESCRIPTION	BY	DATE														
-	----	--	--/--/--											--	--/--/--	--	--/--/--
UNIT LOC	NAMEPLATE DESIGNATION (WHITE SURFACE/BLACK LETTERS)	UNIT TYPE	SIZE	HP	FRAME AMPS	TRIP AMPS	CONTROL SOURCE	VA	FUSE SIZE PRI SEC	INTERLOCKS NO NC	PILOT DEVICES: LED 22 mm ** ON LIGHT OFF LIGHT		ADDL P/L	SS / PB	OTHER UNIT FEATURES	ELEMENTARY #	
1A	POMPE FLYGT M4 FLYGT PUMP M4	FVNR	NEMA 3	30	HL 150	ADJ 50	120Vac FUSED SEPARATE CONTROL W/DPDT PWR DISC				1 1	GREEN			#16 AWG MTW CONTROL WIRE, 600V SYSTEM, DEVICENET, Expansion Module, MOTOR CIRCUIT PROTECTOR, POWER TERM BLOCKS, RESET PB, STD WIRE LABELS, Tesys T OL, TRANSIENT SUPPRESSION, WIRED RELAY, (1) SPECIAL CONTROL FUSE	E36143402-001-01	
1G	VALVE 1	FVR	NEMA 1	2	HL 150	ADJ 30	120Vac FUSED SEPARATE CONTROL W/DPDT PWR DISC				1F 1R 1F 1R	GREEN	GREEN		#16 AWG MTW CONTROL WIRE, 600V SYSTEM, DEVICENET, Expansion Module, MOTOR CIRCUIT PROTECTOR, POWER TERM BLOCKS, RESET PB, STD WIRE LABELS, Tesys T OL, TRANSIENT SUPPRESSION, WIRED RELAY, (2) SPECIAL CONTROL FUSE	E36143402-001-02	
1N	VALVE 2	FVR	NEMA 1	2	HL 150	ADJ 30	120Vac FUSED SEPARATE CONTROL W/DPDT PWR DISC				1F 1R 1R 1R	GREEN	GREEN		#16 AWG MTW CONTROL WIRE, 600V SYSTEM, DEVICENET, Expansion Module, MOTOR CIRCUIT PROTECTOR, POWER TERM BLOCKS, RESET PB, STD WIRE LABELS, Tesys T OL, TRANSIENT SUPPRESSION, WIRED RELAY, (2) SPECIAL CONTROL FUSE	E36143402-001-02	
1U	LIBRE / SPACE	SPACE															
2A		SPACE															
2E	CHAUFFAGE MINIMUM HL MINIMUM HEATING HL	FVNR	NEMA 2	14.8 KW	HL 150	ADJ 50	120Vac FUSED SEPARATE CONTROL W/DPDT PWR DISC				1 1	GREEN			#16 AWG MTW CONTROL WIRE, 600V SYSTEM, DEVICENET, Expansion Module, 3" UNIT EXT, MOTOR CIRCUIT PROTECTOR, POWER TERM BLOCKS, RESET PB, STD WIRE LABELS, Tesys T OL, TRANSIENT SUPPRESSION, WIRED RELAY, (1) SPECIAL CONTROL FUSE	E36143402-001-03	
UNIT LOC	NAMEPLATE DESIGNATION	UNIT TYPE	SIZE	HP	FRAME AMPS	TRIP AMPS	CONTROL SOURCE	VA	FUSE SIZE PRI SEC	INTERLOCKS NO NC	PILOT DEVICES: LED 22 mm ** ON LIGHT OFF LIGHT		ADDL P/L	SS / PB	OTHER UNIT FEATURES	ELEMENTARY #	

JOB NAME:	PROJET: CANAL ST-OURS	EQUIPMENT DESIGNATION:	CCM-4 PILIER # 3
JOB LOCATION:	CHAMBLY, QC	EQUIPMENT TYPE:	MODEL 6 MOTOR CONTROL CENTER
DRAWN BY:	CAD	DRAWING TYPE:	UNIT INFORMATION
ENGR:	DU		
DATE:	FEBRUARY 18, 2015		
DRAWING STATUS:	RECORD		
		DWG#	I36143402-001-01
		PG	1 OF 4
		REV	-

REV	DESCRIPTION	BY	DATE															
-	----	---	---/---/---															
UNIT LOC	NAMEPLATE DESIGNATION	UNIT TYPE	SIZE	HP	FRAME AMPS	TRIP AMPS	CONTROL SOURCE	VA	FUSE SIZE PRI	SEC	INTERLOCKS NO	NC	PILOT DEVICES: LED ON LIGHT	22 mm ** OFF LIGHT	ADDL P/L	SS / PB	OTHER UNIT FEATURES	ELEMENTARY #
2J	CHAUFFAGE MOYEN HM MID HEATING HM	FVNR	NEMA 2	21.4 KW	HL 150	ADJ 50	120Vac FUSED SEPARATE CONTROL W/DPDT PWR DISC				1	1	GREEN				#16 AWG MTW CONTROL WIRE, 600V SYSTEM, DEVICENET, Expansion Module, 3" UNIT EXT, MOTOR CIRCUIT PROTECTOR, POWER TERM BLOCKS, RESET PB, STD WIRE LABELS, Tesys T OL, TRANSIENT SUPPRESSION, WIRED RELAY, (1) SPECIAL CONTROL FUSE	E36143402-001-03
20	TRANSFO. DE CONTROLE CONTROL TRANSFORMER	1PH DIST XFMR	1 kVA		HL 150	15	CONTROL TRANSFORMER	1000	5.00	10.00							INT INTLK 2A/2B FORM C, UNIT MOUNTED	E36143402-001-04
2S	POMPE A PUMP A	FVNR	NEMA 3	40	HL 150	ADJ 100	120Vac FUSED SEPARATE CONTROL W/DPDT PWR DISC				1	1	GREEN				#16 AWG MTW CONTROL WIRE, 600V SYSTEM, DEVICENET, Expansion Module, MOTOR CIRCUIT PROTECTOR, POWER TERM BLOCKS, RESET PB, STD WIRE LABELS, Tesys T OL, TRANSIENT SUPPRESSION, WIRED RELAY, (1) SPECIAL CONTROL FUSE	E36143402-001-01
3A	DISJ. PRINC. 400 A. 400 A. MAIN BREAKER	MAIN BKR			LL 400	400											(2)2/0-500KCMIL 1 LUGS/PH, 80% RATED, ADJ. L, ADJ. I TRIP FUNCTION, ALUMINUM MECH LUGS, ELECTRONIC STANDARD TRIP UNIT	E36143402-001-06
3G	LIBRE / SPACE	SPACE																
UNIT LOC	NAMEPLATE DESIGNATION	UNIT TYPE	SIZE	HP	FRAME AMPS	TRIP AMPS	CONTROL SOURCE	VA	FUSE SIZE PRI	SEC	INTERLOCKS NO	NC	PILOT DEVICES: LED ON LIGHT	22 mm ** OFF LIGHT	ADDL P/L	SS / PB	OTHER UNIT FEATURES	ELEMENTARY #
													JOB NAME:	PROJET: CANAL ST-OURS				
													JOB LOCATION:	CHAMBLY, QC				
													DRAWN BY:	CAD				
													ENGR:	DU				
													DATE:	FEBRUARY 18, 2015				
													DRAWING STATUS:	RECORD				
													EQUIPMENT DESIGNATION: CCM-4 PILIER # 3					
													EQUIPMENT TYPE: MODEL 6 MOTOR CONTROL CENTER					
													DRAWING TYPE: UNIT INFORMATION					
																		
													DWG# I36143402-001-01		PG 2	OF 4	REV -	

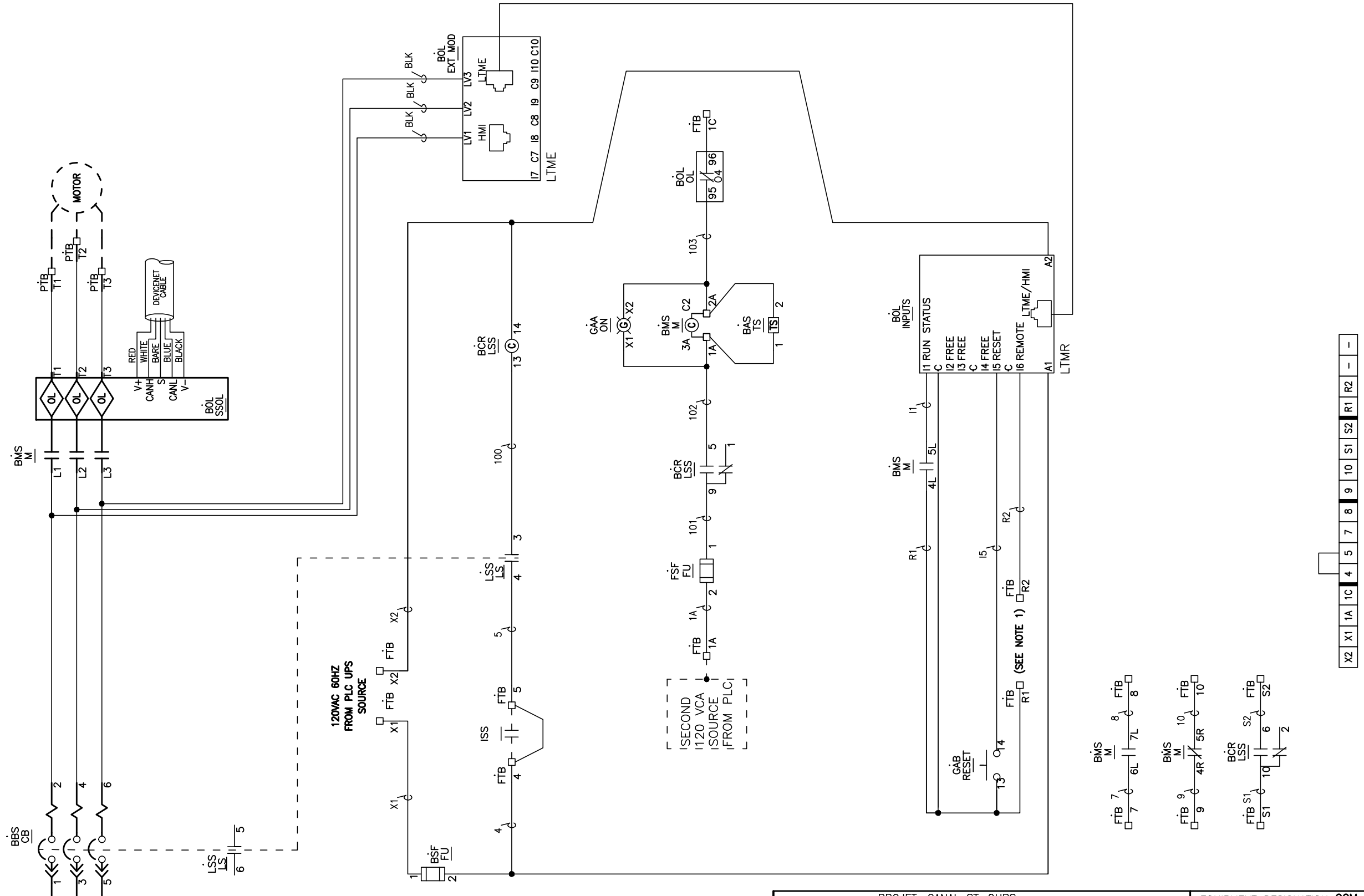
REV	DESCRIPTION	BY	DATE																
-	----	--	---/---/---	-	-----	--	---/---/---	-	-----	--	---/---/---	-	-----	--	---/---/---	-	-----	--	---/---/---
UNIT LOC	NAMEPLATE DESIGNATION	UNIT TYPE	SIZE	HP	FRAME AMPS	TRIP AMPS	CONTROL SOURCE	VA	FUSE SIZE PRI	SEC	INTERLOCKS NO	NC	PILOT DEVICES: LED ON LIGHT	OFF LIGHT	22 mm ** ADDL P/L	SS / PB	OTHER UNIT FEATURES	ELEMENTARY #	
3M	TRANSFO. 30KVA 600/208-120V	3PH DIST XFMR	30 kVA		HL 150	40											INT INTLK 2A/2B FORM C, SECONDARY WIRE TO PANELBOARD 4B, 208/120V 3PH. 3W.	E36143402-001-07	
4A	LIBRE / SPACE	SPACE																	
4B	PD-CCM6	PANEL BOARD	100A		QB												42 CIRCUITS, FULLY RATED, NQ PANELBOARD, (16) QOB115, (7) QOB230,	E36143402-001-08	
4S	RECEPTACLE # 19 WELD SOCKET # 19	BRANCH BKR			HL 150	30											14-3/0AWG 1 LUG/PH, 80% RATED, ALUMINUM MECH LUGS	E36143402-001-09	
4W	LIBRE / SPACE	SPACE																	
5A	LIBRE / SPACE	SPACE																	
5E	POMPE PUISARD SUM PUMP	FVNR	NEMA 1	3	HL 150	ADJ 30	120Vac FUSED SEPARATE CONTROL W/DPDT PWR DISC				1	1	GREEN				#16 AWG MTW CONTROL WIRE, 600V SYSTEM, DEVICENET, Expansion Module, 3" UNIT EXT, MOTOR CIRCUIT PROTECTOR, POWER TERM BLOCKS, RESET PB, STD WIRE LABELS, Tesys T OL, TRANSIENT SUPPRESSION, WIRED RELAY, (1) SPECIAL CONTROL FUSE	E36143402-001-05	
5J	POMPE M1 PUMP M1	FVNR	NEMA 1	5	HL 150	ADJ 30	120Vac FUSED SEPARATE CONTROL W/DPDT PWR DISC				1	1	GREEN				#16 AWG MTW CONTROL WIRE, 600V SYSTEM, DEVICENET, Expansion Module, 3" UNIT EXT, MOTOR CIRCUIT PROTECTOR, POWER TERM BLOCKS, RESET PB, STD WIRE LABELS, Tesys T OL, TRANSIENT SUPPRESSION, WIRED RELAY, (1) SPECIAL CONTROL FUSE	E36143402-001-10	
UNIT LOC	NAMEPLATE DESIGNATION	UNIT TYPE	SIZE	HP	FRAME AMPS	TRIP AMPS	CONTROL SOURCE	VA	FUSE SIZE PRI	SEC	INTERLOCKS NO	NC	PILOT DEVICES: LED ON LIGHT	OFF LIGHT	22 mm ** ADDL P/L	SS / PB	OTHER UNIT FEATURES	ELEMENTARY #	

JOB NAME:	PROJET: CANAL ST-OURS	EQUIPMENT DESIGNATION:	CCM-4 PILIER # 3
JOB LOCATION:	CHAMBLY, QC	EQUIPMENT TYPE:	MODEL 6 MOTOR CONTROL CENTER
DRAWN BY:	CAD	DRAWING TYPE:	UNIT INFORMATION
ENGR:	DU		
DATE:	FEBRUARY 18, 2015		
DRAWING STATUS:	RECORD		
		DWG#	I36143402-001-01
		PG	3 OF 4
		REV	-





REV	DESCRIPTION	BY	DATE																
-	-	-	-	-	-	-	-	-	-	-	-	-	-	-	-	-	-	-	-

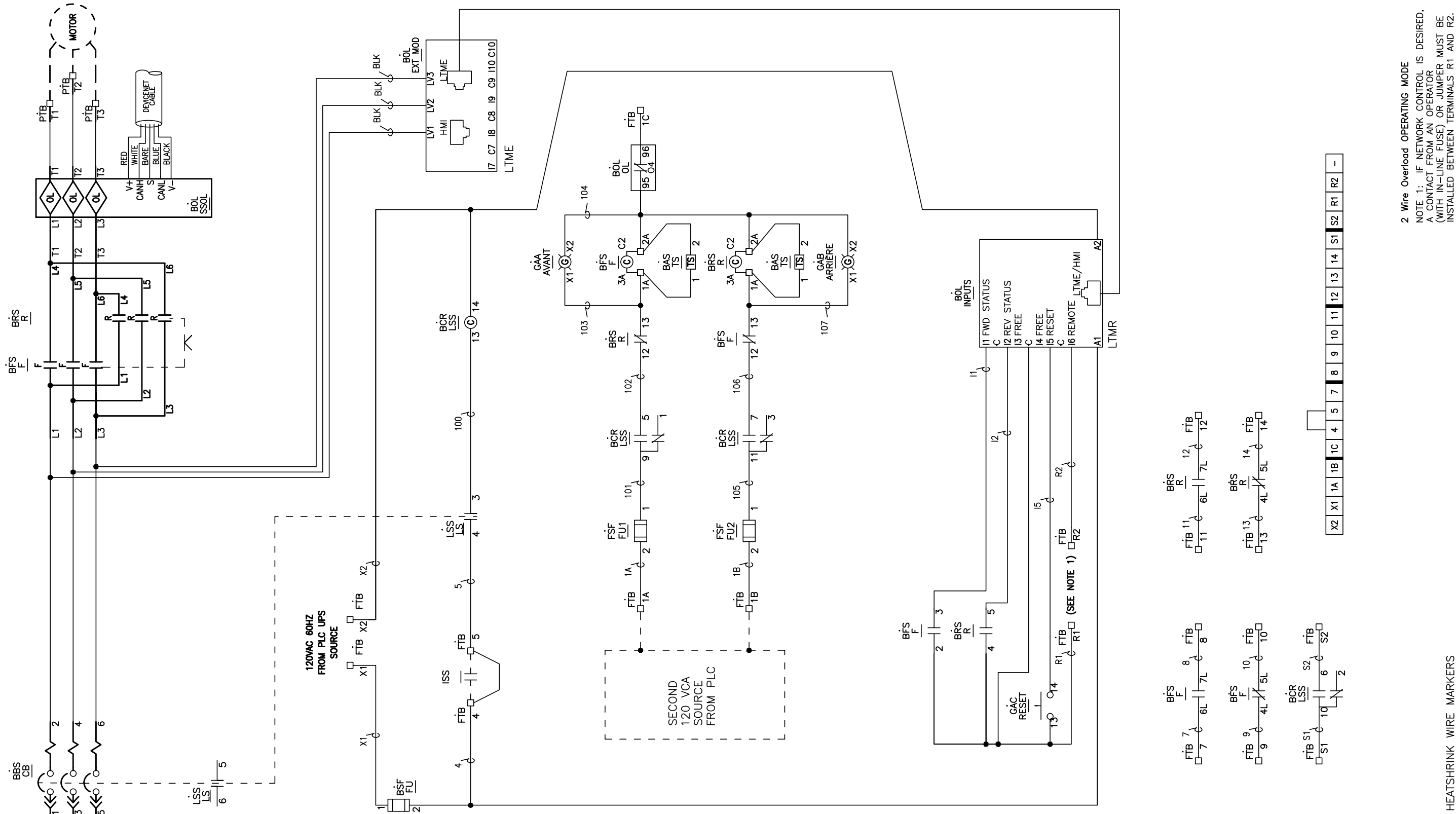


2 Wire Overload OPERATING MODE  
 NOTE 1: IF NETWORK CONTROL IS DESIRED,  
 A CONTACT FROM AN OPERATOR  
 (WITH IN-LINE FUSE) OR JUMPER MUST BE  
 INSTALLED BETWEEN TERMINALS R1 AND R2.

HEATSHRINK WIRE MARKERS

JOB NAME:	PROJET: CANAL ST-OURS	EQUIPMENT DESIGNATION:	CCM-4 PILIER # 3
JOB LOCATION:	CHAMBLY, QC	EQUIPMENT TYPE:	MODEL 6 MOTOR CONTROL CENTER
DRAWN BY:	CAD	DRAWING TYPE:	ELEMENTARY
ENGR:	DU		
DATE:	FEBRUARY 18, 2015		
DRAWING STATUS:	RECORD	DWG#	E36143402-001-01
		PG 1	OF 1
		REV	-

REV	DESCRIPTION	BY	DATE						
1									

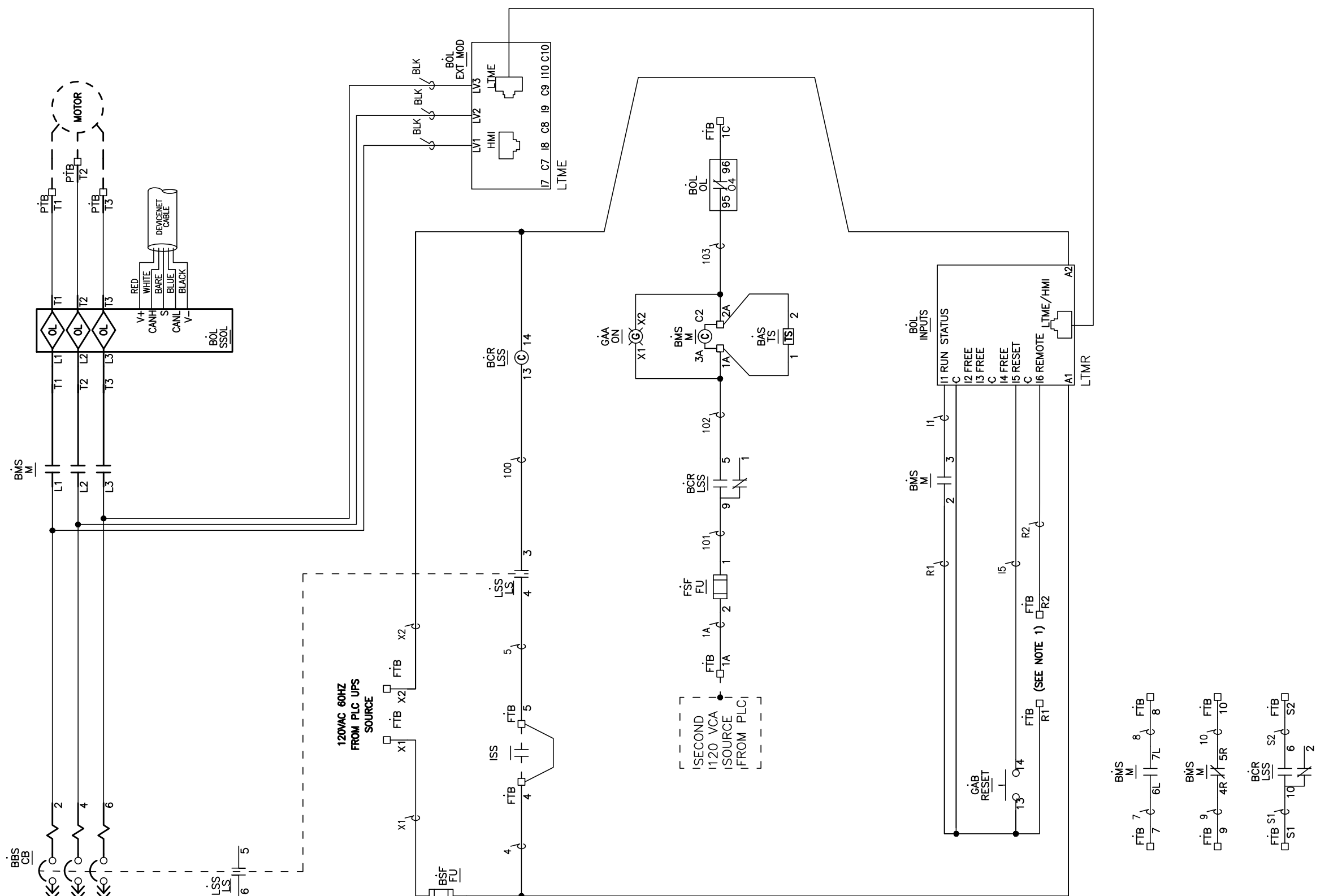


2 Wire Overload OPERATING MODE  
 NOTE 1: IF NETWORK CONTROL IS DESIRED,  
 A CONTACT FROM AN OPERATOR  
 (WITH IN-LINE FUSE) OR JUMPER MUST BE  
 INSTALLED BETWEEN TERMINALS R1 AND R2.

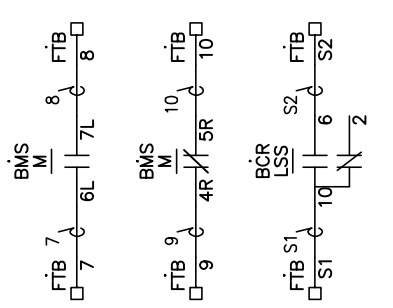
HEATSHRINK WIRE MARKERS

JOB NAME:	PROJET: CANAL ST-OURS	EQUIPMENT DESIGNATION:	CCM-4 PILIER # 3
JOB LOCATION:	CHAMBLY, QC	EQUIPMENT TYPE:	MODEL 6 MOTOR CONTROL CENTER
DRAWN BY:	CAD	DRAWING TYPE:	ELEMENTARY
ENGR:	DU		
DATE:	FEBRUARY 18, 2015		
DRAWING STATUS:	RECORD		
DWG# E36143402-001-02		PG 1 OF 1 REV -	

REV	DESCRIPTION	BY	DATE																
-																			



X2	X1	1A	1C	4	5	7	8	9	10	S1	S2	R1	R2	-
----	----	----	----	---	---	---	---	---	----	----	----	----	----	---

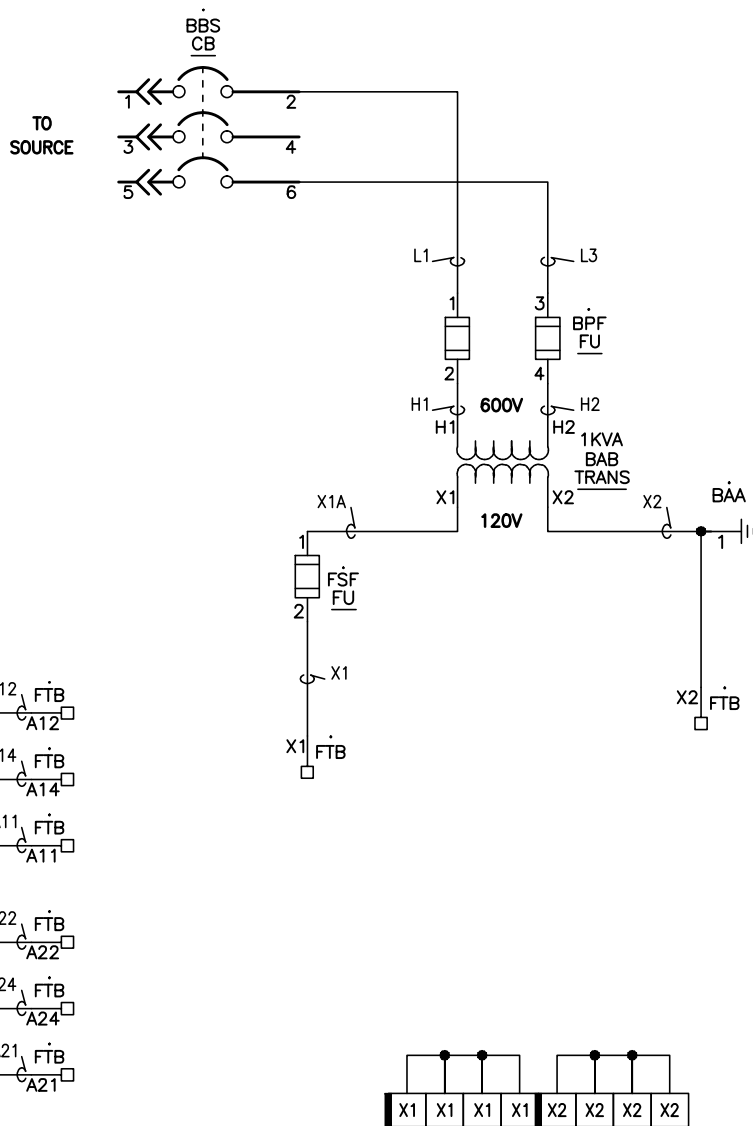


2 Wire Overload OPERATING MODE  
 NOTE 1: IF NETWORK CONTROL IS DESIRED, A CONTACT FROM AN OPERATOR (WITH IN-LINE FUSE) OR JUMPER MUST BE INSTALLED BETWEEN TERMINALS R1 AND R2.


HEATSHRINK WIRE MARKERS

JOB NAME:	PROJET: CANAL ST-OURS	EQUIPMENT DESIGNATION:	CCM-4 PILIER # 3
JOB LOCATION:	CHAMBLY, QC	EQUIPMENT TYPE:	MODEL 6 MOTOR CONTROL CENTER
DRAWN BY:	CAD	DRAWING TYPE:	ELEMENTARY
ENGR:	DU		
DATE:	FEBRUARY 18, 2015		
DRAWING STATUS:	RECORD	DWG#	E36143402-001-03
		PG 1	OF 1
		REV	-

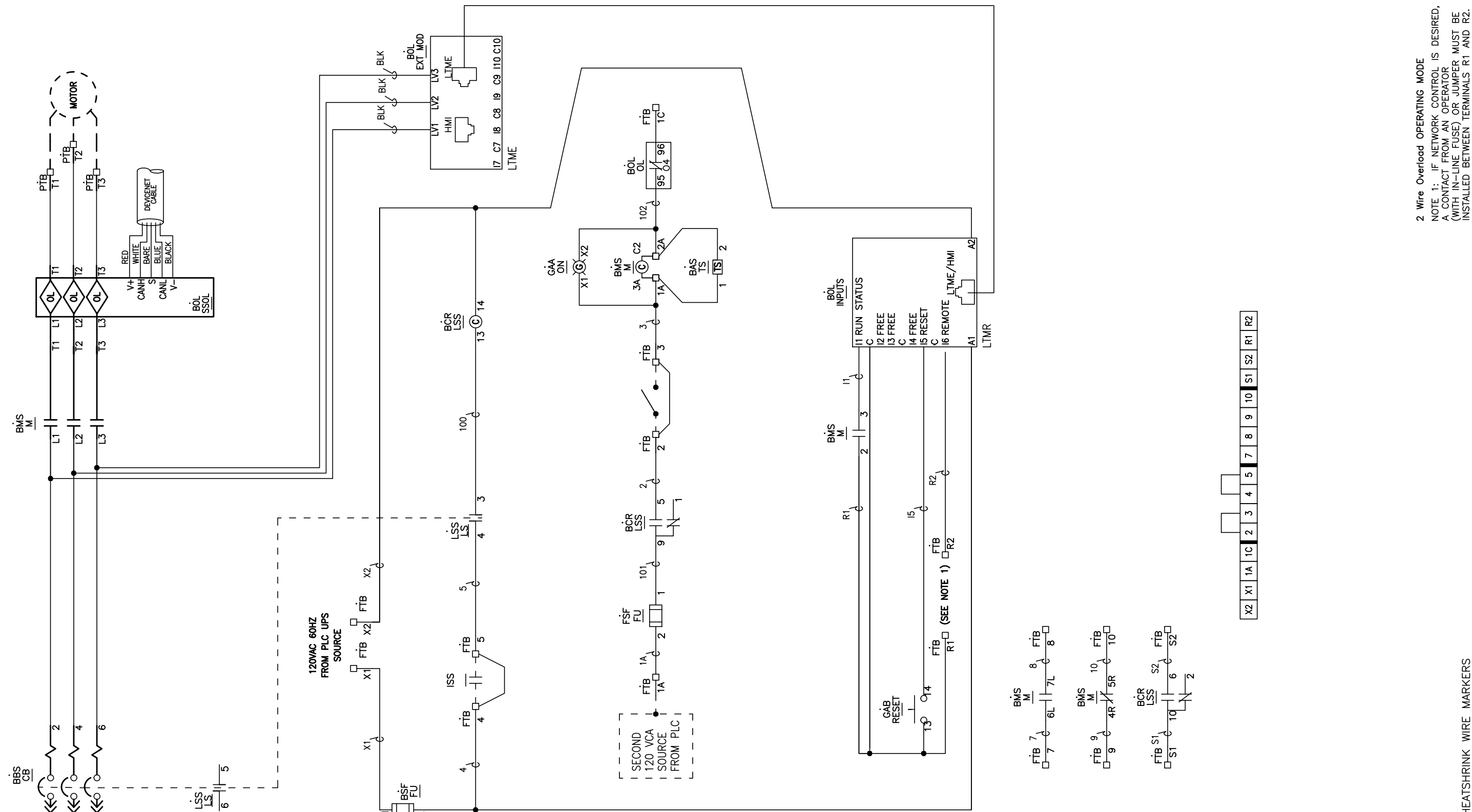
REV	DESCRIPTION	BY	DATE				
-	-	-	-	-	-	-	-



HEATSHRINK WIRE MARKERS

JOB NAME:	PROJET: CANAL ST-OURS	EQUIPMENT DESIGNATION:	CCM-4 PILIER # 3
JOB LOCATION:	CHAMBLY, QC	EQUIPMENT TYPE:	MODEL 6 MOTOR CONTROL CENTER
DRAWN BY:	CAD	DRAWING TYPE:	ELEMENTARY
ENGR:	DU		
DATE:	FEBRUARY 18, 2015		
DRAWING STATUS:	RECORD	DWG#	E36143402-001-04
		PG 1	OF 1
		REV	-

REV	DESCRIPTION	BY	DATE						
-									

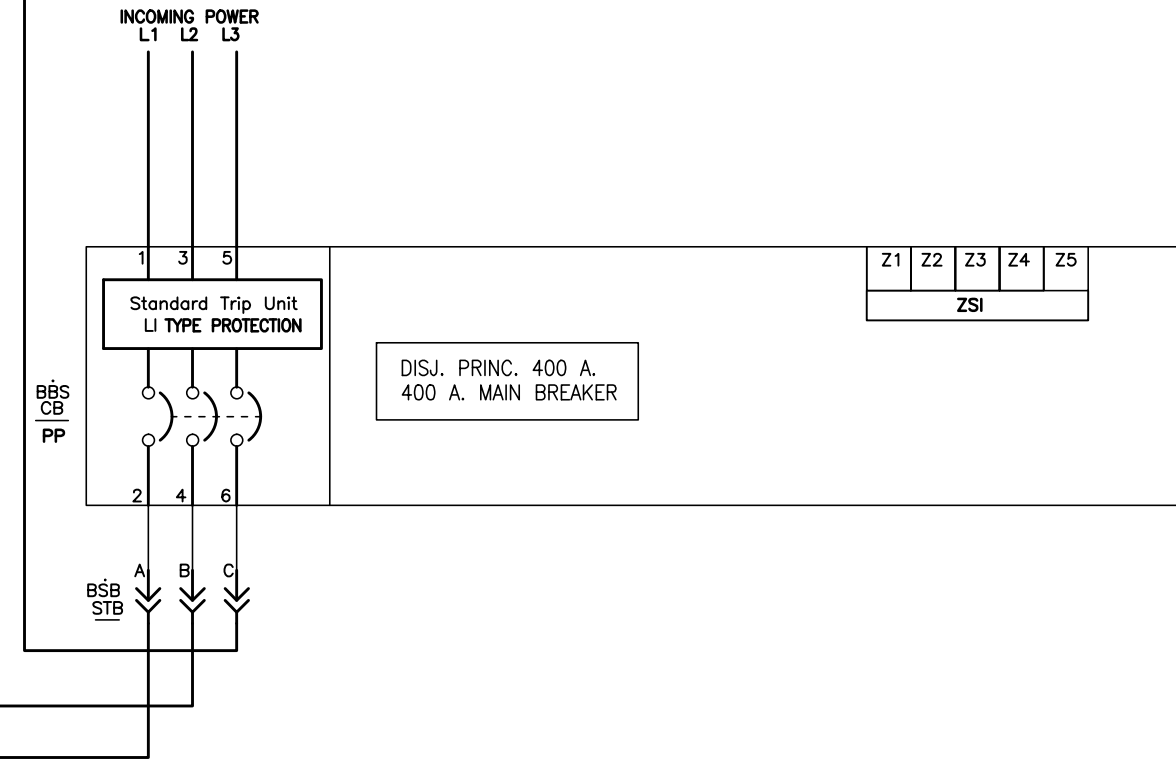
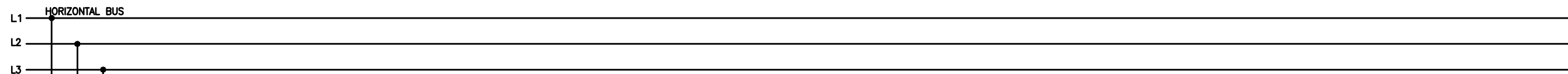


JOB NAME:	PROJET: CANAL ST-OURS	EQUIPMENT DESIGNATION:	CCM-4 PILIER # 3
JOB LOCATION:	CHAMBLY, QC	EQUIPMENT TYPE:	MODEL 6 MOTOR CONTROL CENTER
DRAWN BY:	CAD	DRAWING TYPE:	ELEMENTARY
ENGR:	DU		
DATE:	FEBRUARY 18, 2015		
DRAWING STATUS:	RECORD	DWG#	E36143402-001-05
		PG 1	OF 1
		REV	-

HEATSHRINK WIRE MARKERS

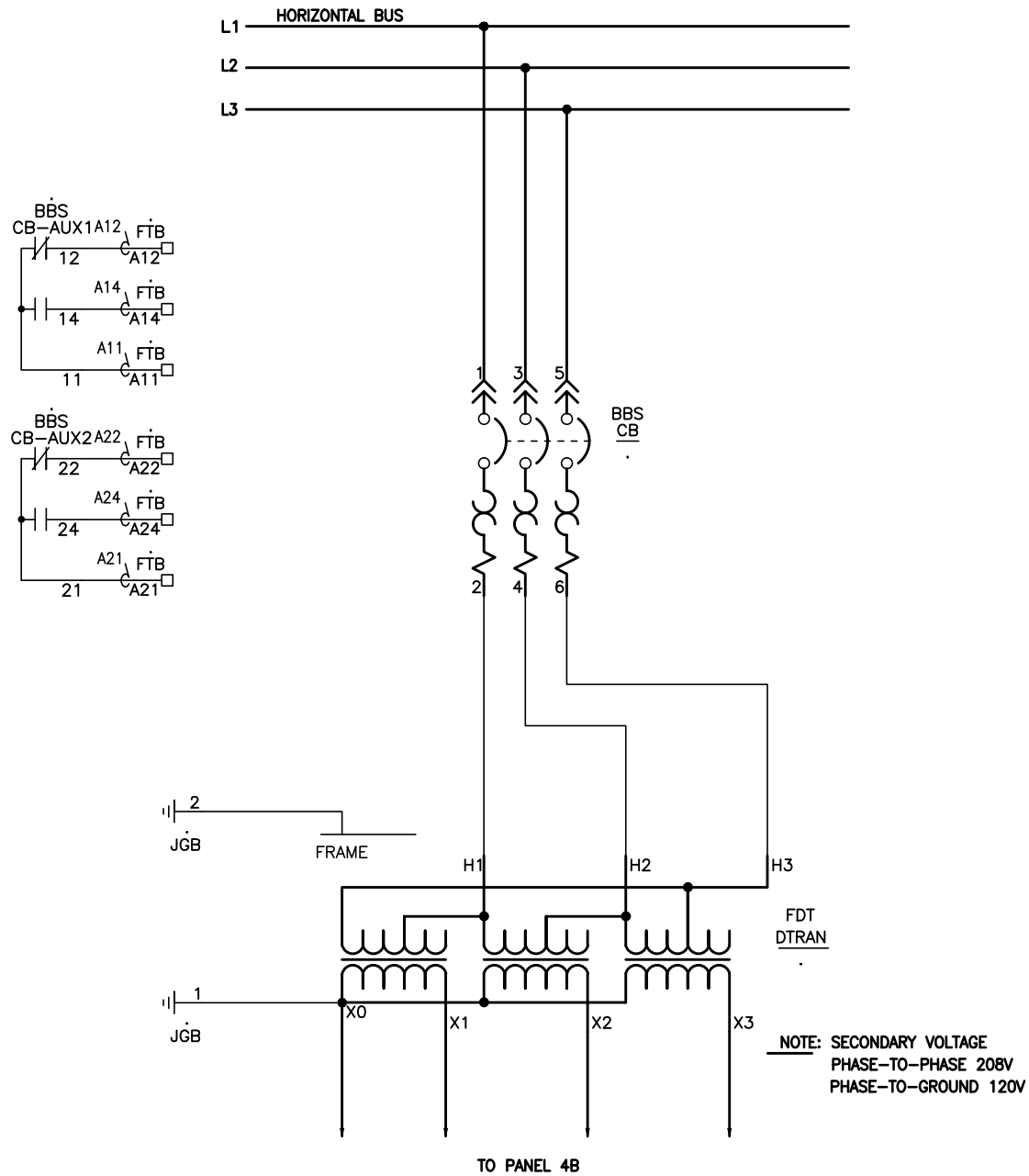
X2	X1	1A	1C	2	3	4	5	7	8	9	10	S1	S2	R1	R2
----	----	----	----	---	---	---	---	---	---	---	----	----	----	----	----

REV	DESCRIPTION	BY	DATE						
-	----	---	---/---/---	-	----	--	--/---/---	-	----
-	----	---	---/---/---	-	----	--	--/---/---	-	----




JOB NAME:	PROJET: CANAL ST-OURS	EQUIPMENT DESIGNATION:	CCM-4 PILIER # 3
JOB LOCATION:	CHAMBLY, QC	EQUIPMENT TYPE:	MODEL 6 MOTOR CONTROL CENTER
DRAWN BY:	CAD	DRAWING TYPE:	ELEMENTARY
ENGR:	DU		
DATE:	FEBRUARY 18, 2015		
DRAWING STATUS:	RECORD	DWG#	E36143402-001-06
		PG 1	OF 1
		REV	-

REV	DESCRIPTION	BY	DATE				
-	----	--	---/---/---	-	----	---	---/---/---

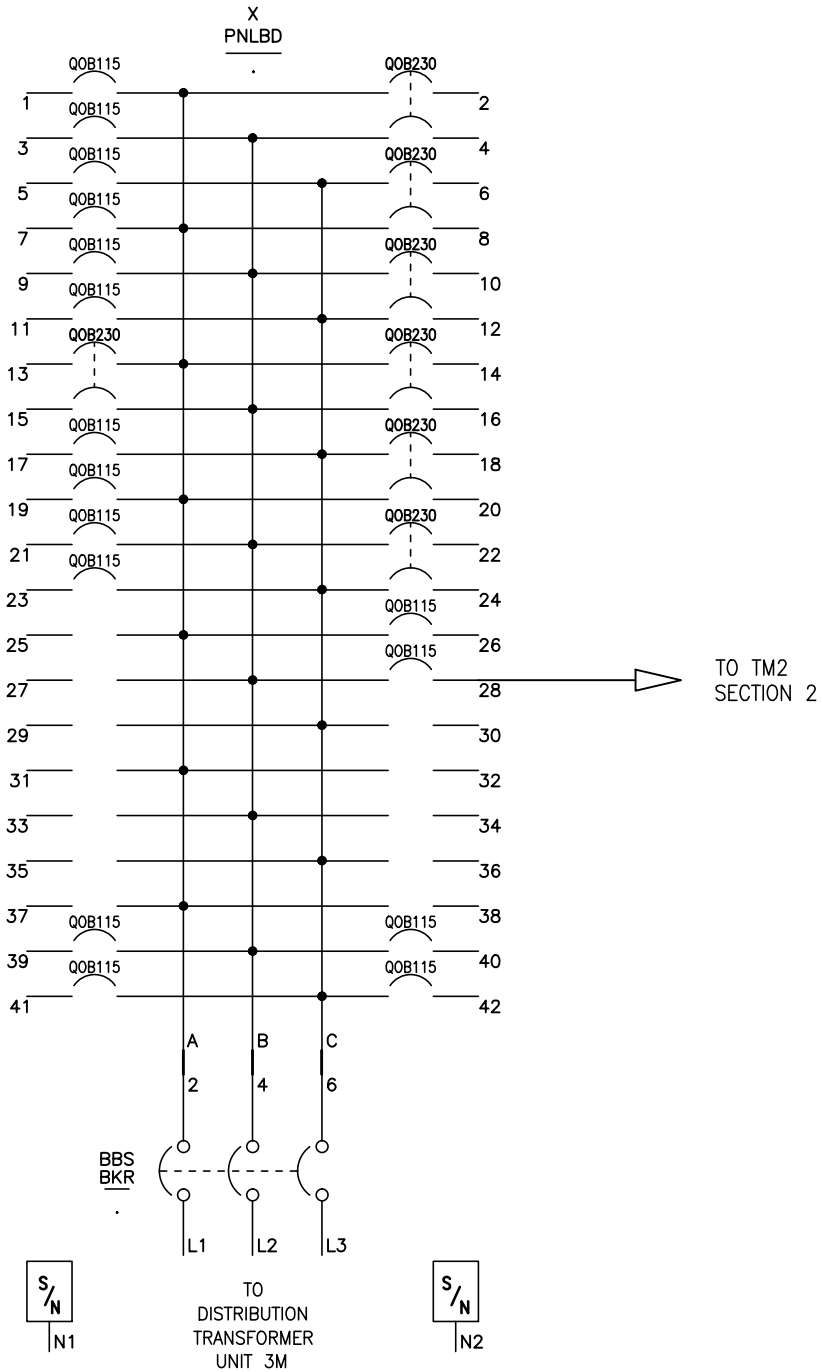


HEATSHRINK WIRE MARKERS

JOB NAME:	PROJET: CANAL ST-OURS	EQUIPMENT DESIGNATION:	CCM-4 PILIER # 3
JOB LOCATION:	CHAMBLY, QC	EQUIPMENT TYPE:	MODEL 6 MOTOR CONTROL CENTER
DRAWN BY:	CAD	DRAWING TYPE:	ELEMENTARY
ENGR:	DU		
DATE:	FEBRUARY 18, 2015		
DRAWING STATUS:	RECORD	DWG#	E36143402-001-07
		PG 1	OF 1
		REV	-



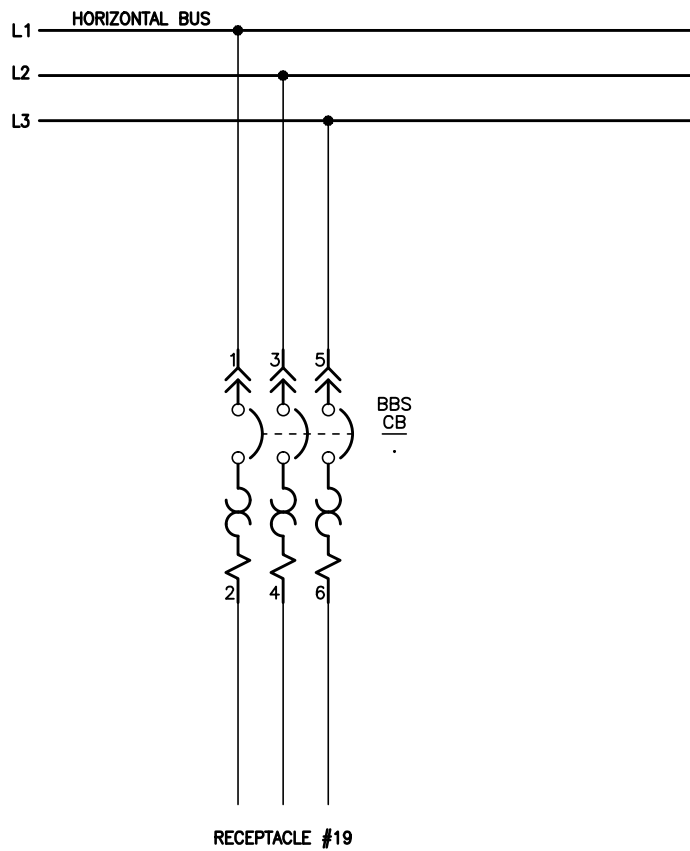
REV	DESCRIPTION	BY	DATE				
-	----	-	---/---/---	-	----	-	---/---/---




Note: Connect GFI/EPD/EPE Neutral to Panel Neutral

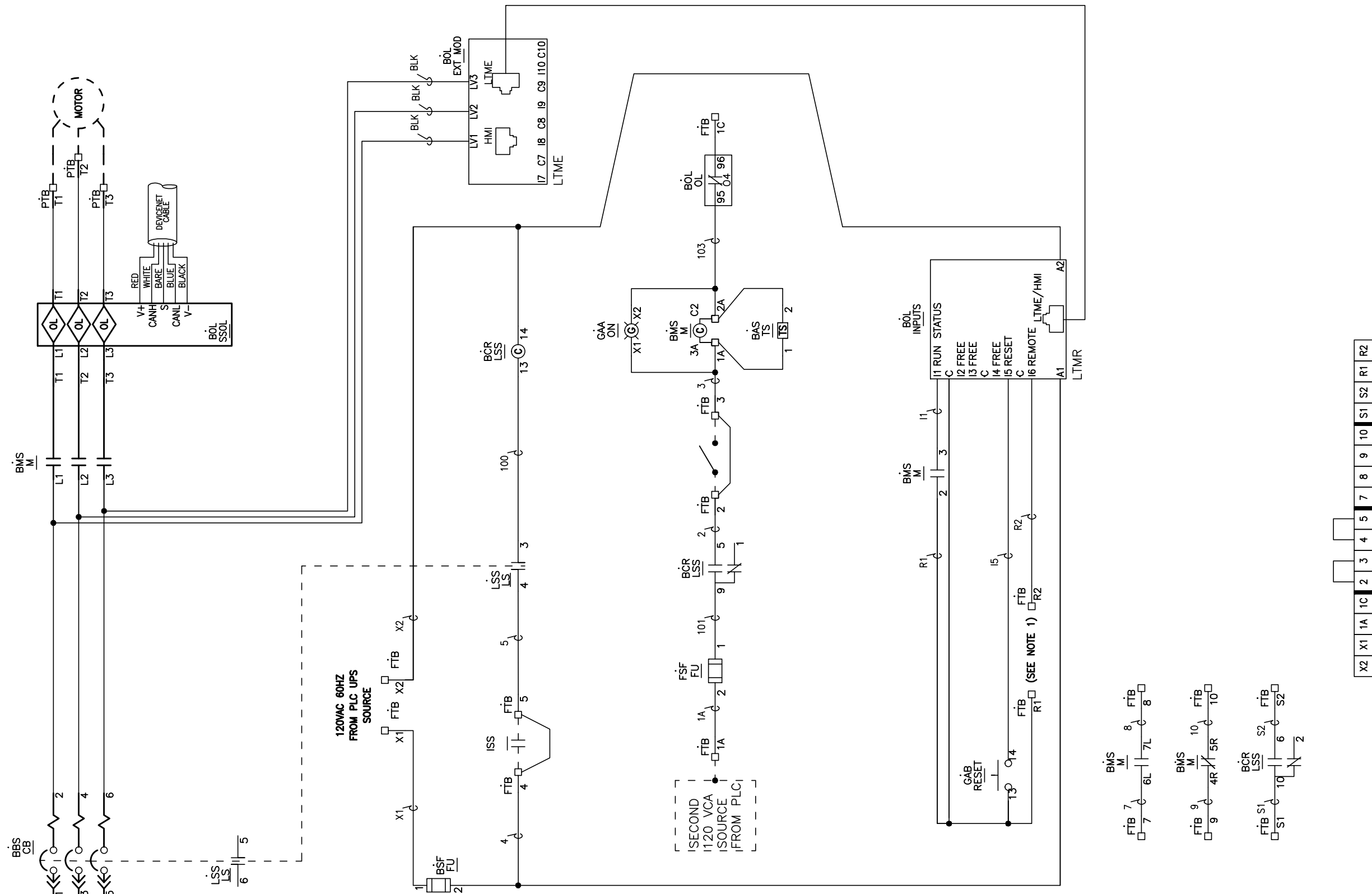
JOB NAME:	PROJET: CANAL ST-OURS	EQUIPMENT DESIGNATION:	CCM-4 PILIER # 3
JOB LOCATION:	CHAMBLY, QC	EQUIPMENT TYPE:	MODEL 6 MOTOR CONTROL CENTER
DRAWN BY:	CAD	DRAWING TYPE:	ELEMENTARY
ENGR:	DU		
DATE:	FEBRUARY 18, 2015		
DRAWING STATUS:	RECORD	DWG#	E36143402-001-08
		PG 1	OF 1
		REV	-

REV	DESCRIPTION	BY	DATE				
-	-----	--	---/---/---	-	-----	---	---/---/---



JOB NAME:	PROJET: CANAL ST-OURS	EQUIPMENT DESIGNATION:	CCM-4 PILIER # 3			
JOB LOCATION:	CHAMBLY, QC	EQUIPMENT TYPE:	MODEL 6 MOTOR CONTROL CENTER			
DRAWN BY:	CAD	DRAWING TYPE:	ELEMENTARY			
ENGR:	DU					
DATE:	FEBRUARY 18, 2015					
DRAWING STATUS:	RECORD	DWG#	E36143402-001-09	PG 1	OF 1	REV -

REV	DESCRIPTION	BY	DATE						
1									



2 Wire Overload OPERATING MODE  
 NOTE 1: IF NETWORK CONTROL IS DESIRED,  
 A CONTACT FROM AN OPERATOR  
 (WITH IN-LINE FUSE) OR JUMPER MUST BE  
 INSTALLED BETWEEN TERMINALS R1 AND R2.

X2 X1 1A 1C 2 3 4 5 7 8 9 10 S1 S2 R1 R2

HEATSHRINK WIRE MARKERS

JOB NAME:	PROJET: CANAL ST-OURS	EQUIPMENT DESIGNATION:	CCM-4 PILIER # 3
JOB LOCATION:	CHAMBLY, QC	EQUIPMENT TYPE:	MODEL 6 MOTOR CONTROL CENTER
DRAWN BY:	CAD	DRAWING TYPE:	ELEMENTARY
ENGR:	DU		
DATE:	FEBRUARY 18, 2015		
DRAWING STATUS:	RECORD	DWG#	E36143402-001-10
		PG 1	OF 1
		REV	-