

GENERAL NOTES

- CONTRACTORS TO CHECK AND VERIFY ALL DIMENSIONS ON SITE PRIOR TO DEMOLITION OR CONSTRUCTION AND REPORT ANY ERRORS OR OMISSIONS TO DEPARTMENTAL REPRESENTATIVE.
- CONTRACTORS MUST VISIT THE SITE & FULLY FAMILIARIZE THEMSELVES WITH THE SCOPE OF THE WORK.
- PREVENT THE SPREAD OF DUST & DEBRIS BEYOND THE WORK AREA AND CLEAN ALL SURFACES AT COMPLETION.
- MAKE GOOD ALL SURFACES AFFECTED BY THIS WORK.
- COORDINATE ALL SHUTDOWNS WITH THE DEPARTMENTAL REPRESENTATIVE.
- PROVIDE ALL LABOUR AND MATERIAL REQUIRED TO FORM A COMPLETE, FUNCTIONAL SYSTEM AS DESCRIBED ON DRAWINGS.

GENERAL

- THIS CONTRACTOR SHALL BE RESPONSIBLE TO SUPPLY AND INSTALL ALL MECHANICAL SYSTEMS AS DETAILED IN ACCORDANCE WITH THE LATEST EDITIONS OF THE NATIONAL BUILDING CODE, NATIONAL PLUMBING CODE, ASHRAE, SMACNA, NFPA, NFC, THE AUTHORITY HAVING JURISDICTION AND TO THE REQUIREMENTS OF THE PROVINCE OF NEWFOUNDLAND AND LABRADOR.
- THIS CONTRACTOR SHALL VISIT THE SITE PRIOR TO SUBMITTING BID TO DETERMINE EXISTING CONDITIONS.
- IT IS THE INTENT OF THESE DRAWINGS TO PROVIDE FOR A COMPLETE AND FULLY OPERATING SYSTEM IN ACCORDANCE WITH ALL APPLICABLE CODES. NOT WITHSTANDING THAT THE DRAWINGS MAY NOT COVER EACH AND EVERY ITEM REQUIRED FOR THE COMPLETE MECHANICAL INSTALLATION, THE MECHANICAL CONTRACTOR SHALL SUPPLY ALL LABOUR, MATERIALS, TOOLS, EQUIPMENT AND TRANSPORTATION NECESSARY FOR THE COMPLETE INSTALLATIONS OF THE MECHANICAL SYSTEM ON SITE.
- THE CONTRACTOR IS TO ENSURE THAT THE DELIVERY TIME OF ALL MECHANICAL EQUIPMENT DOES NOT CAUSE A DELAY IN THE SCHEDULING OF THIS PROJECT. NOTIFY THE NRC DEPARTMENT IDENTIFICATION IF ANY PROBLEMS ARISE.
- EMPLOY ONLY TRADESPEOPLE WITH PROPER LICENSES FOR THE WORK.
- DRAWINGS ARE DIAGRAMMATIC AND APPROXIMATE TO SCALE. THE CONTRACT DOCUMENTS ESTABLISH SCOPE, MATERIALS AND QUALITY AND ARE NOT A COMPREHENSIVE BILL OF MATERIALS, OR DETAILED INSTALLATIONS INSTRUCTIONS.
- CO-OPERATE WITH OTHER SECTIONS AND TRADE DISCIPLINES AS REQUIRED FOR THE COMPLETION OF THE TOTAL WORK. REPORT ANY DISCREPANCIES TO NRC DEPARTMENTAL REPRESENTATIVE.
- ALL FIRE ASSEMBLIES MUST BE MAINTAINED.
- CONFORM TO MANUFACTURERS INSTALLATION INSTRUCTIONS, DETAILS, AND PROCEDURES FOR EQUIPMENT INSTALLATION AND START-UP. SUPPLY AND INSTALL ALL MANUFACTURER'S RECOMMENDED ACCESSORIES FOR EACH UNIT INCLUDING VALVES, FITTING, GAUGES, FILTERS, ETC.
- SUBMIT SHOP DRAWINGS OF ALL EQUIPMENT, VALVES, PIPING, INSULATION, ETC., FOR APPROVAL. EQUIPMENT IS NOT TO BE PURCHASED PRIOR TO SHOP DRAWING APPROVAL.
- OBTAIN AND PAY FOR ALL PERMITS AND FEES REQUIRED TO CARRY OUT AND COMPLETE THE WORK.
- ALL WORK SHALL BE GUARANTEED FOR A PERIOD OF ONE (1) YEAR AFTER DATE OF ACCEPTANCE BY OWNER.
- PROVIDE TWO (2) COPIES OF AS-BUILT DRAWINGS AND MAINTENANCE MANUALS FOR APPROVAL BY NRC DEPARTMENTAL REPRESENTATIVE.

IDENTIFICATION

- ALL PIPING, DUCT, AND OTHER MECHANICAL EQUIPMENT AND SERVICES ARE TO BE PERMANENTLY LABELED WITH TAGS REFERENCED TO THE DRAWINGS AND DIRECTION OF FLOW.
- ALL CONTROL DEVICES ARE TO BE LABELED WITH THE IDENTIFICATION OF THE DEVICE THAT THEY CONTROL AND THE CONTROL FUNCTION.
- ALL PIPING TO BE PERMANENTLY LABELED WITH TAGS REFERENCED TO THE DRAWINGS.
- REFERENCE SPECIFICATION SECTION 23 05 53.01.

CUTTING AND PATCHING

- UNLESS OTHERWISE STIPULATED, THE MECHANICAL CONTRACTOR SHALL BE RESPONSIBLE FOR COORDINATING WITH GENERAL CONTRACTOR THE CUTTING, PATCHING, AND MAKE GOOD ALL OPENINGS REQUIRED FOR THE MECHANICAL SERVICES.

CONTROLS

- THE EXISTING CONTROLS SERVING THE EXISTING EVAPORATORS AND EVAPORATIVE CONDENSERS SHALL BE MAINTAINED AND RETURNED TO OPERATION AS IT CURRENTLY EXISTS. NEW CONTROLS FOR THE NEW PUMPS SHALL BE ADDED TO MATCH EXISTING.

COMMISSIONING

- CONTRACTOR TO COMMISSION ALL SYSTEMS TO THE SATISFACTION OF NRC.

ELECTRICAL SPECIFICATIONS:

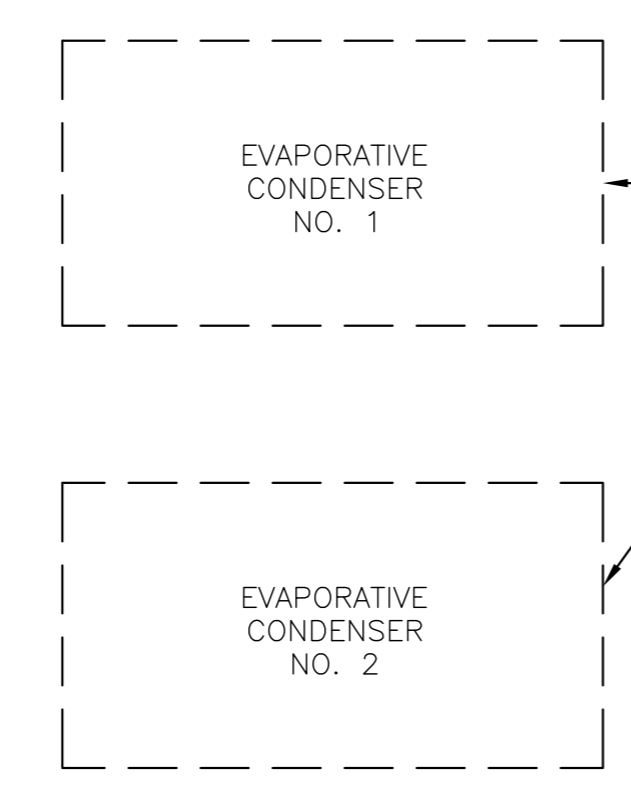
- 1.1.1 COMPLY WITH THE REQUIREMENTS OF THE CURRENT EDITION OF THE CANADIAN ELECTRICAL CODE (CSA 22.1) AND AMENDMENTS THERETO AND THE REGULATIONS OF THE ELECTRICAL INSPECTION AUTHORITIES.
- 1.1.2 SUPPLY ALL NECESSARY LABOUR, MATERIAL AND EQUIPMENT FOR COMPLETE ELECTRICAL INSTALLATION PER DRAWINGS AND SPECIFICATIONS.
- 1.1.3 EXAMINE THE SITE AND LOCAL CONDITIONS AFFECTING TRADE BEFORE SUBMITTING TENDER.
- 1.1.4 GUARANTEE ALL WORK AND EQUIPMENT INSTALLED FOR TWELVE (12) MONTHS AFTER COMPLETION. REPLACE WITHOUT CHARGE ANY DEFECTIVE ITEMS PROVIDED THAT FAILURE IS NOT DUE TO IMPROPER USAGE BY OTHERS.
- 1.1.5 CONTRACTOR TO COORDINATE SHUTDOWN OF EXISTING SERVICES WITH OWNER TO ALLOW FOR MINIMUM DISRUPTION OF OCCUPIED SPACE TO SUIT OWNER'S SCHEDULE.
- 1.1.6 RENDER SAFE, THE INSTALLATIONS AT LOCATIONS FROM WHICH EXISTING EQUIPMENT HAS BEEN REMOVED, BY WITHDRAWING THE EXISTING WIRING AND REMOVING CONDUITS WHERE CONDUITS ARE CAST IN CONCRETE OR ARE INACCESSIBLE, THEY WILL BE SEALED AND LEFT IN PLACE.
- 1.1.7 RESTORE ANY CIRCUITS THAT MAY BE DISRUPTED BY THE REMOVAL OF EXISTING EQUIPMENT, OR AS A RESULT OF RENOVATIONS/DEMOLITION.
- 1.1.8 PROVIDE ALL CUTTING, PATCHING AND PAINTING TO RESTORE ANY FINISHED SURFACES TO MATCH ADJACENT FINISHES, FOLLOWING REMOVAL OR RELOCATION OF EQUIPMENT WIRING AND CONDUIT.
- 1.1.9 PROVIDE ULC APPROVED FIRE STOPPING LISTED FOR APPLICATION AT ALL FIRE WALL PENETRATIONS.
- 1.1.10 REFERENCE ELECTRICAL SPECIFICATION SECTIONS 26 05 00, 26 05 20, 26 05 29 AND 26 28 23.

PIPING LEGEND

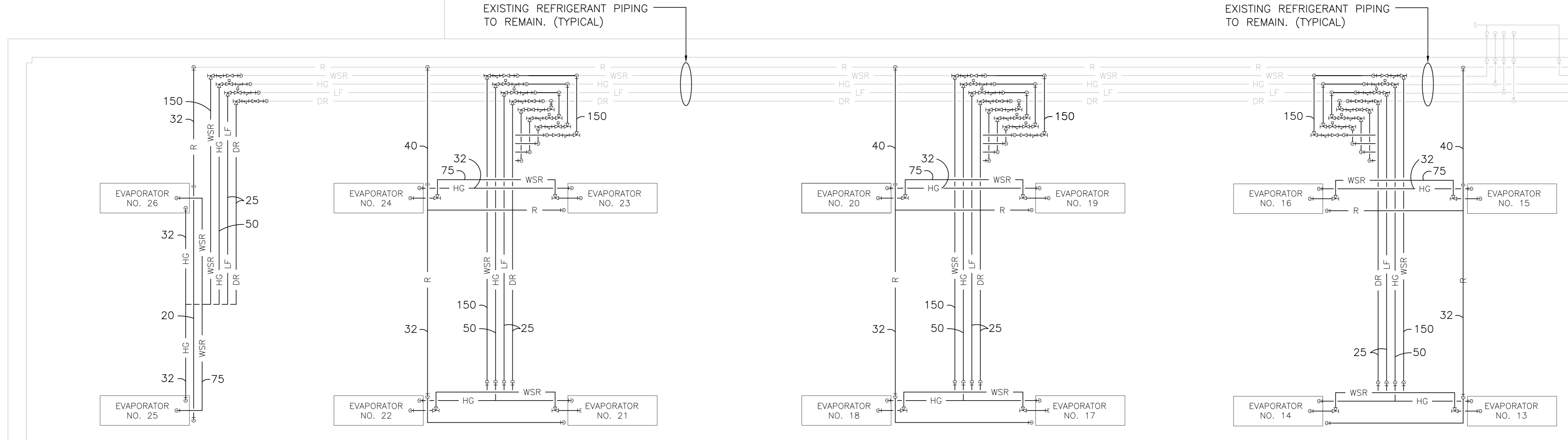
RELIEF PIPING	R
WET SUCTION RETURN	WSR
HOT GAS	HG
LIQUID FEED	LF
DEFROST RELIEF	DR

LIST OF DRAWINGS

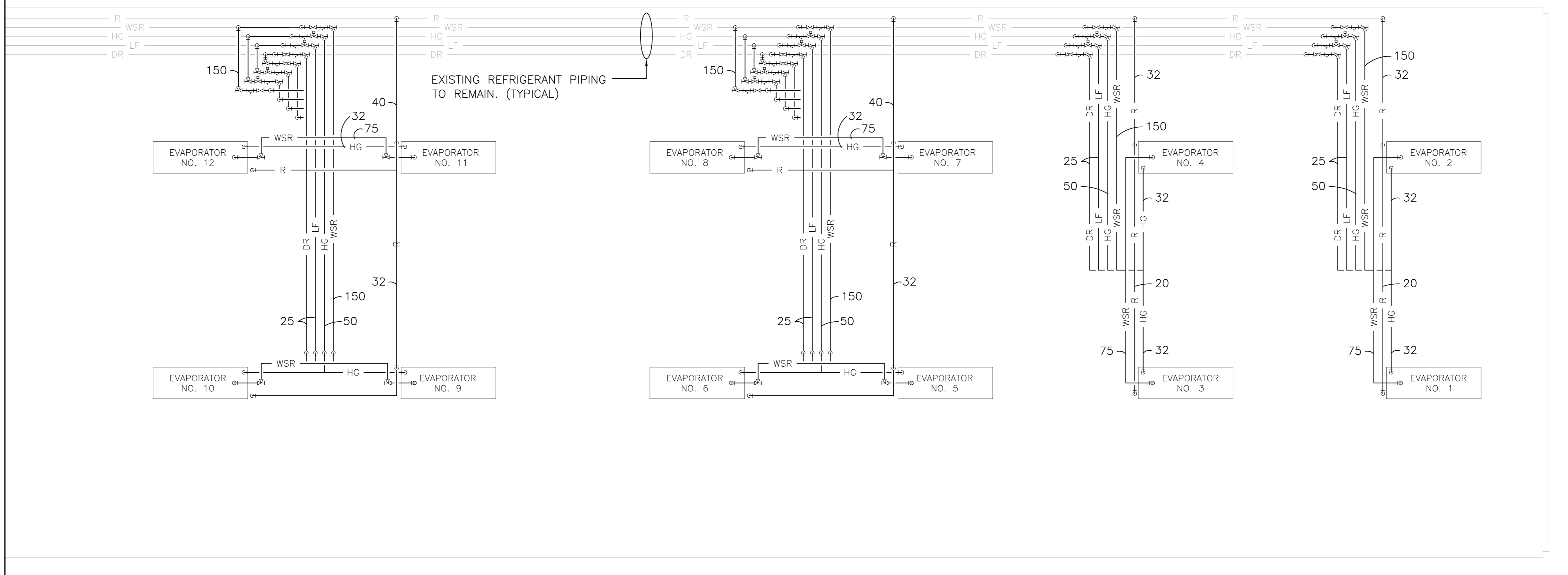
- 5089-M01 - SPECIFICATIONS AND UPPER LEVEL REFRIGERATION DEMOLITION PLAN
- 5089-M02 - UPPER LEVEL NEW REFRIGERATION PLANS
- 5089-M03 - TYPICAL EVAPORATOR PIPING DETAILS
- 5089-M04 - CHILLER PUMP AND EVAPORATIVE CONDENSER PIPING DETAIL
- 5089-M05 - NEW EVAPORATIVE CONDENSER PIPING DETAIL



EXISTING EVAPORATIVE CONDENSER TO BE REMOVED AND REPLACED WITH NEW EVAPORATIVE CONDENSER, BALTIMORE AIRCOIL MODEL VXC-530 OR EQUIVALENT. ALL EXTERIOR PIPING TO 1000mm INSIDE OF THE BUILDING ENVELOPE SHALL BE REMOVED AND REPLACED WITH NEW. PIPING, VALVES AND FITTINGS TO MATCH EXISTING. CONTRACTOR TO CONFIRM EXACT ARRANGEMENTS ON SITE. SEE DETAIL ON DRAWING M4 FOR MORE DETAILS.



1 M01 UPPER LEVEL REFRIGERATION DEMOLITION PLAN 'A' - ICE TANK ROOM
 SCALE = 1:75



2 M01 UPPER LEVEL REFRIGERATION DEMOLITION PLAN 'B' - ICE TANK ROOM
 SCALE = 1:75

KEY PLAN

No.	Date	Revision	By
0	25/09/15	ISSUED FOR TENDER	RAN
Date Printed: 20 AUG 2015 Date Imprimée:			

- Verify all dimensions and site conditions and be responsible for same.
- Vérifier toutes les dimensions et l'état des lieux et en assumer la responsabilité.

A	A Detail no. / No. du détail
B	B Location drawing no. / sur dessin no.
C	C Drawing no. / dessin no.

project: **NRC AMMONIA SYSTEM UPGRADE** projet:

ST. JOHN'S, NL drawing: _____ design:

SPECIFICATIONS AND UPPER LEVEL REFRIGERATION DEMOLITION PLANS

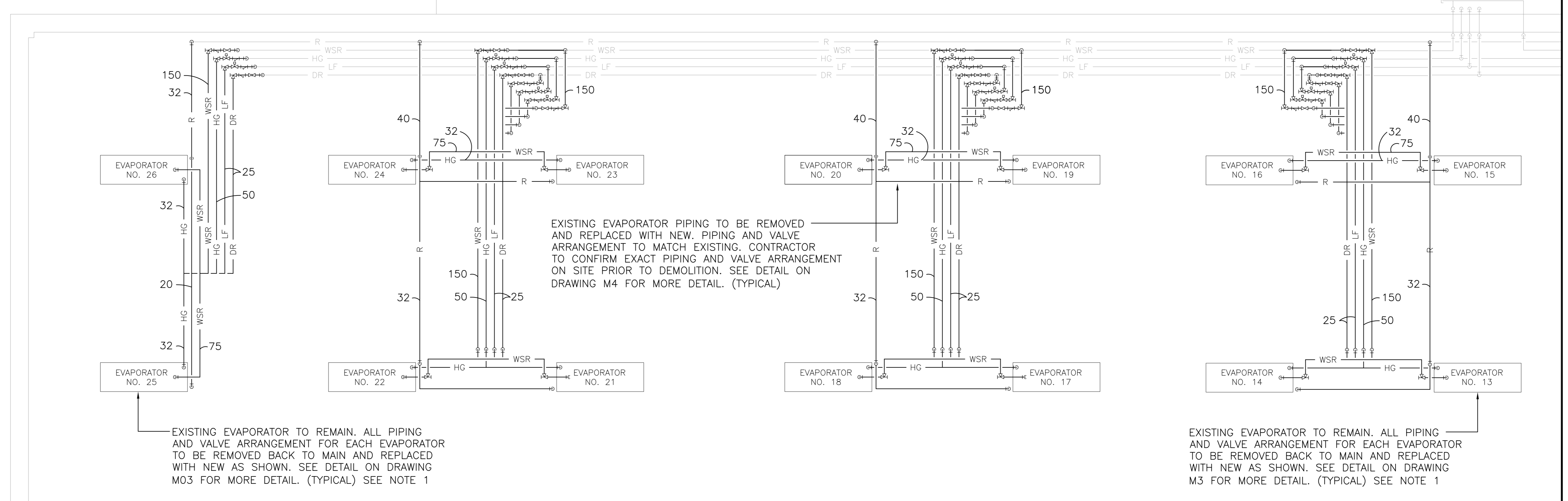
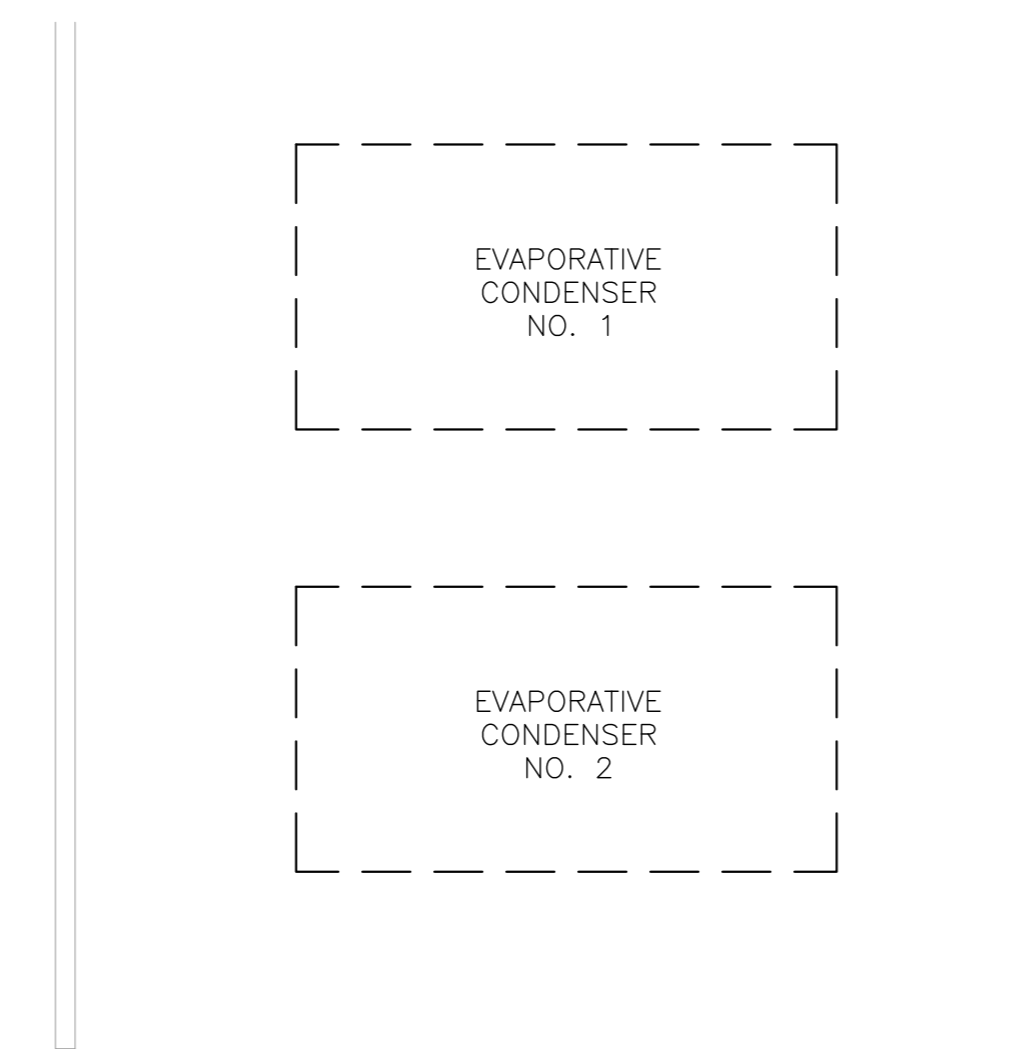
designed	compu	date	date
W. NEWTON		17/08/15	
drawn	dessiné	scale	échelle
C. LODGE		AS SHOWN	
checked	vérifié	sheet	feuille
		1 of 5	5
approved	approuvé	W.O.no.	D.T.no.
		5089	
dwg.no.			dessin no.
M01			

DRAWING NOTES:

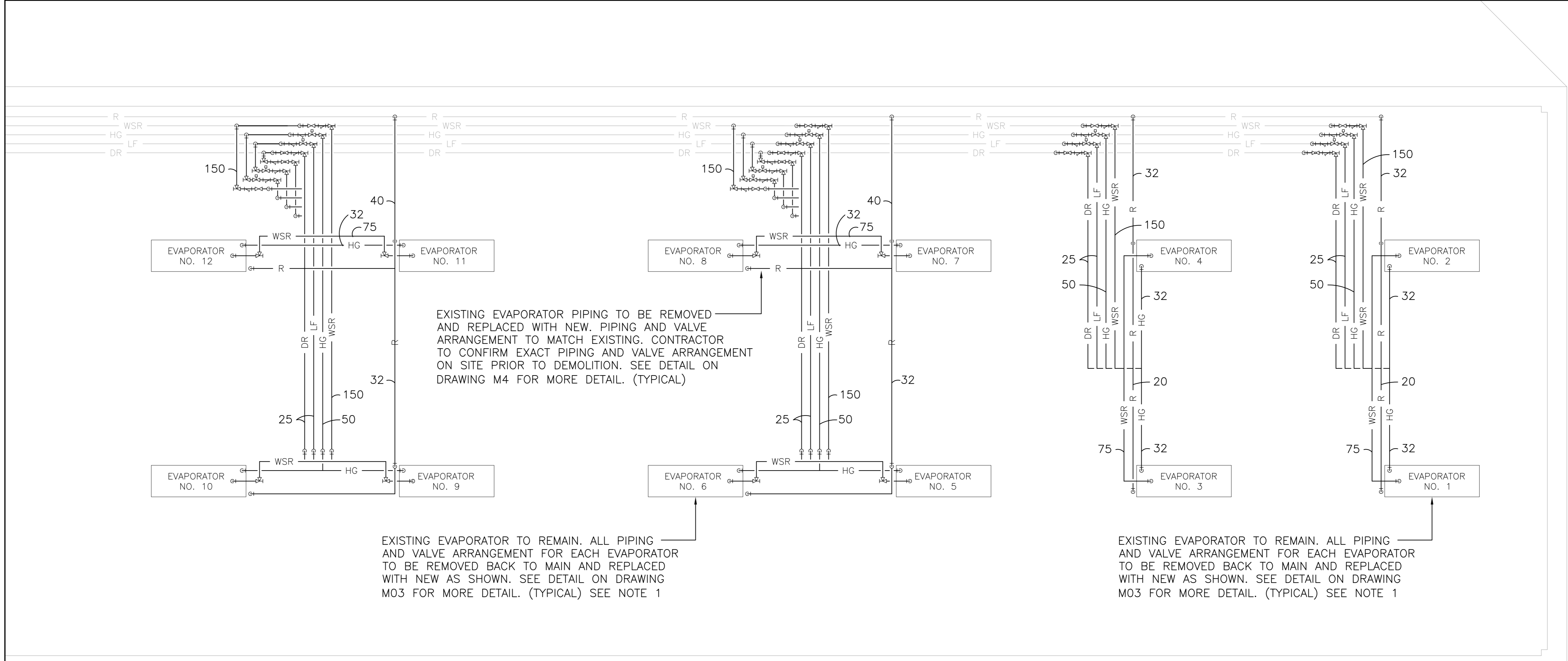
- ① ALL EXISTING EVAPORATOR VALVES SHALL BE REPLACED WITH VALVES OF SIMILAR SIZE AND CAPACITY. CONTROL WIRING TO BE RECONNECTED AND PUT BACK INTO OPERATION ONCE WORK IS COMPLETE.

PIPING LEGEND

RELIEF PIPING	— R —
WET SUCTION RETURN	— WSR —
HOT GAS	— HG —
LIQUID FEED	— LF —
DEFROST RELIEF	— DR —
PURGE	— P —
EQUALIZER	— EQ —
HIGH STAGE DISCHARGE	— HSD —
CONDENSER WATER DRAIN	— CWD —
CONDENSER WATER SUPPLY	— CWS —



1 NEW UPPER LEVEL REFRIGERATION PLAN 'A' - ICE TANK ROOM
SCALE = 1:75



2 UPPER LEVEL REFRIGERATION PLAN 'B' - ICE TANK ROOM
SCALE = 1:75

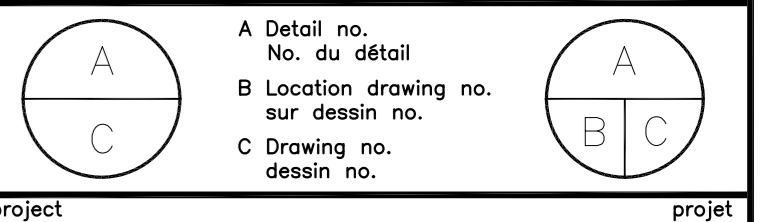
- GENERAL NOTES**
- CONTRACTORS TO CHECK AND VERIFY ALL DIMENSIONS ON SITE PRIOR TO DEMOLITION OR CONSTRUCTION AND REPORT ANY ERRORS OR OMISSIONS TO DEPARTMENTAL REPRESENTATIVE.
 - CONTRACTORS MUST VISIT THE SITE & FULLY FAMILIARIZE THEMSELVES WITH THE SCOPE OF THE WORK.
 - PREVENT THE SPREAD OF DUST & DEBRIS BEYOND THE WORK AREA AND CLEAN ALL SURFACES AT COMPLETION.
 - MAKE GOOD ALL SURFACES AFFECTED BY THIS WORK.
 - COORDINATE ALL SHUTDOWNS WITH THE DEPARTMENTAL REPRESENTATIVE.
 - PROVIDE ALL LABOUR AND MATERIAL REQUIRED TO FORM A COMPLETE, FUNCTIONAL SYSTEM AS DESCRIBED ON DRAWINGS.

KEY PLAN

No.	Date	Revision	By	Appr.
0	25/09/15	ISSUED FOR TENDER	RAN	

Date Printed: 20 AUG 2015 Date Imprimée:

- Verify all dimensions and site conditions and be responsible for same
- Vérifier toutes les dimensions et l'état des lieux et en assumer la responsabilité



project: **NRC AMMONIA SYSTEM UPGRADE** projet:

ST. JOHN'S, NL. drawing: _____ dessin: _____

UPPER LEVEL NEW REFRIGERATION PLANS

designed	conçu	date	17/08/15	date
drawn	dessiné	scale	AS SHOWN	échelle
checked	vérifié	sheet	2	of/ de 5
approved	approuvé	W.O.no.	5089	D.T.no.
dwg.no.				dessin no.

M02

GENERAL NOTES

- CONTRACTORS TO CHECK AND VERIFY ALL DIMENSIONS ON SITE PRIOR TO DEMOLITION OR CONSTRUCTION AND REPORT ANY ERRORS OR OMISSIONS TO DEPARTMENTAL REPRESENTATIVE.
- CONTRACTORS MUST VISIT THE SITE & FULLY FAMILIARIZE THEMSELVES WITH THE SCOPE OF THE WORK.
- PREVENT THE SPREAD OF DUST & DEBRIS BEYOND THE WORK AREA AND CLEAN ALL SURFACES AT COMPLETION.
- MAKE GOOD ALL SURFACES AFFECTED BY THIS WORK.
- COORDINATE ALL SHUTDOWNS WITH THE DEPARTMENTAL REPRESENTATIVE.
- PROVIDE ALL LABOUR AND MATERIAL REQUIRED TO FORM A COMPLETE, FUNCTIONAL SYSTEM AS DESCRIBED ON DRAWINGS.

ITEM NO.	DESCRIPTION
1	150mmØ ANGLE SHUT-OFF VALVE, SEAL CAP
2	75mmØ STRAINER, FLANGED
3	50mmØ ANGLE SHUT-OFF VALVE, SEAL CAP
4	40mmØ PORT SOLENOID VALVE, 120/1/60, 50mmØ FLANGED CONNECTIONS C/W PILOT LIGHT
5	50mmØ STRAINER, FLANGED
6	25mmØ ANGLE SHUT-OFF VALVE, SEAL CAP
7	20mmØ PORT SOLENOID VALVE, 120/1/60, 25mmØ FLANGED CONNECTIONS C/W PILOT LIGHT
8	25mmØ STRAINER, FLANGED
9	40mmØ STRAINER, FLANGED
10	40mmØ PORT DEFROST RELIEF REGULATOR, 40mmØ FLANGED CONNECTIONS, RANGE 0 TO 1000kPa, SET AT 500kPa C/W PRESSURE GAUGE & SHUT-OFF VALVE.
11	75mmØ ANGLE SHUT-OFF VALVE, SEAL CAP
12	DRAIN PAN-TO-COIL HOT GAS CHECK VALVE
13	40mmØ ANGLE SHUT-OFF VALVE, SEAL CAP
14	20mmØ ANGLE SHUT-OFF VALVE, SEAL CAP
15	12mmØ INLET x 20mmØ OUTLET RELIEF VALVE SET @ 1000kPa, CAPACITY: 5.1 kg/min
16	20mmØ PORT IN-LINE CHECK VALVE, 20mmØ FLANGED, SPRING CLOSING, LOW PRESSURE DROP, 5.1kPa.
17	20mmØ HAND EXPANSION VALVE, SCREWED CONNECTION
18	20mmØ STRAINER, SCREWED CONNECTION
19	20mmØ STRAIGHT SHUT-OFF VALVE, SEAL CAP
20	75mmØ PORT CONDENSER POWERED PISTON TYPE CHECK VALVE, WITH 75mmØ FLANGED CONNECTION & 4.8mmØ PORT PILOT SOLENOID VALVE, 120/1/60, C/W STRAINER, ANGLE SHUT-OFF VALVE & PILOT LIGHT, NORMALLY OPEN, PRESSURE POWER CLOSED, 1.7kPa PRESSURE DROP.

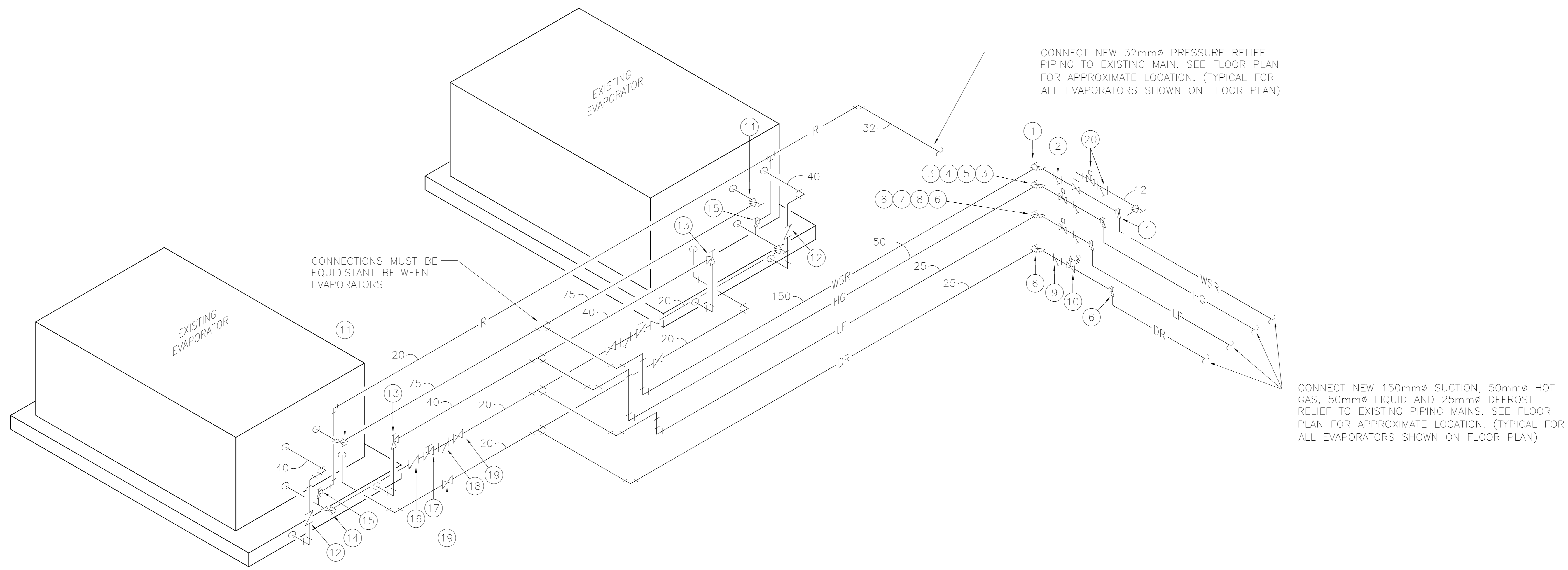
VALVE & FITTING SCHEDULE (TYPICAL FOR BOTH DETAILS)

NOTE:

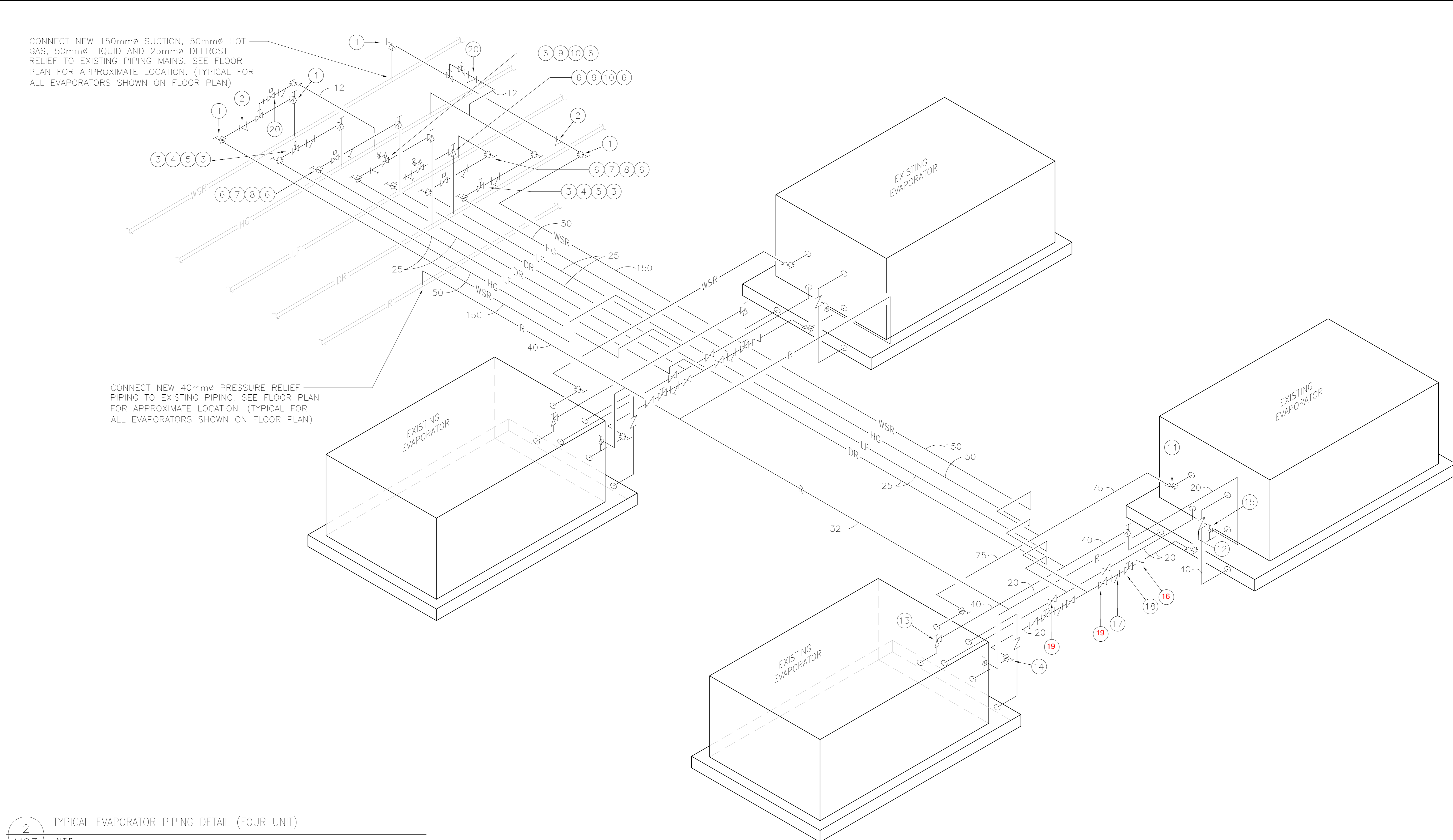
- THE EXISTING 26 EVAPORATORS SHALL BE FITTED WITH NEW PIPING, VALVES AND FITTINGS TO MATCH EXISTING.
- ALL NEW PIPING TO BE INSULATED TO MATCH EXISTING AND IN ACCORDANCE WITH THE SPEC.
- ALL NEW VALVES TO MEET GOVERNMENT OF NL REGULATIONS.

PIPING LEGEND

RELIEF PIPING	— R —
WET SUCTION RETURN	— WSR —
HOT GAS	— HG —
LIQUID FEED	— LF —
DEFROST RELIEF	— DR —
PURGE	— P —
EQUALIZER	— EQ —
HIGH STAGE DISCHARGE	— HSD —
CONDENSER WATER DRAIN	— CWD —
CONDENSER WATER SUPPLY	— CWS —



1
MO3 N.T.S.
TYPICAL EVAPORATOR PIPING DETAIL (TWO UNIT)



2
MO3 N.T.S.
TYPICAL EVAPORATOR PIPING DETAIL (FOUR UNIT)

KEY PLAN

0	25/09/15	ISSUED FOR TENDER	RAN
No.	Date	Revision	By

Date Printed: 20 AUG 2015 Date Imprimée: 20 AUG 2015

- Verify all dimensions and site conditions and be responsible for same.
- Vérifier toutes les dimensions et l'état des lieux et en assumer la responsabilité.

A	A
C	B

project: **NRC AMMONIA SYSTEM UPGRADE** projet

drawing: **ST. JOHNS, NL** dessin

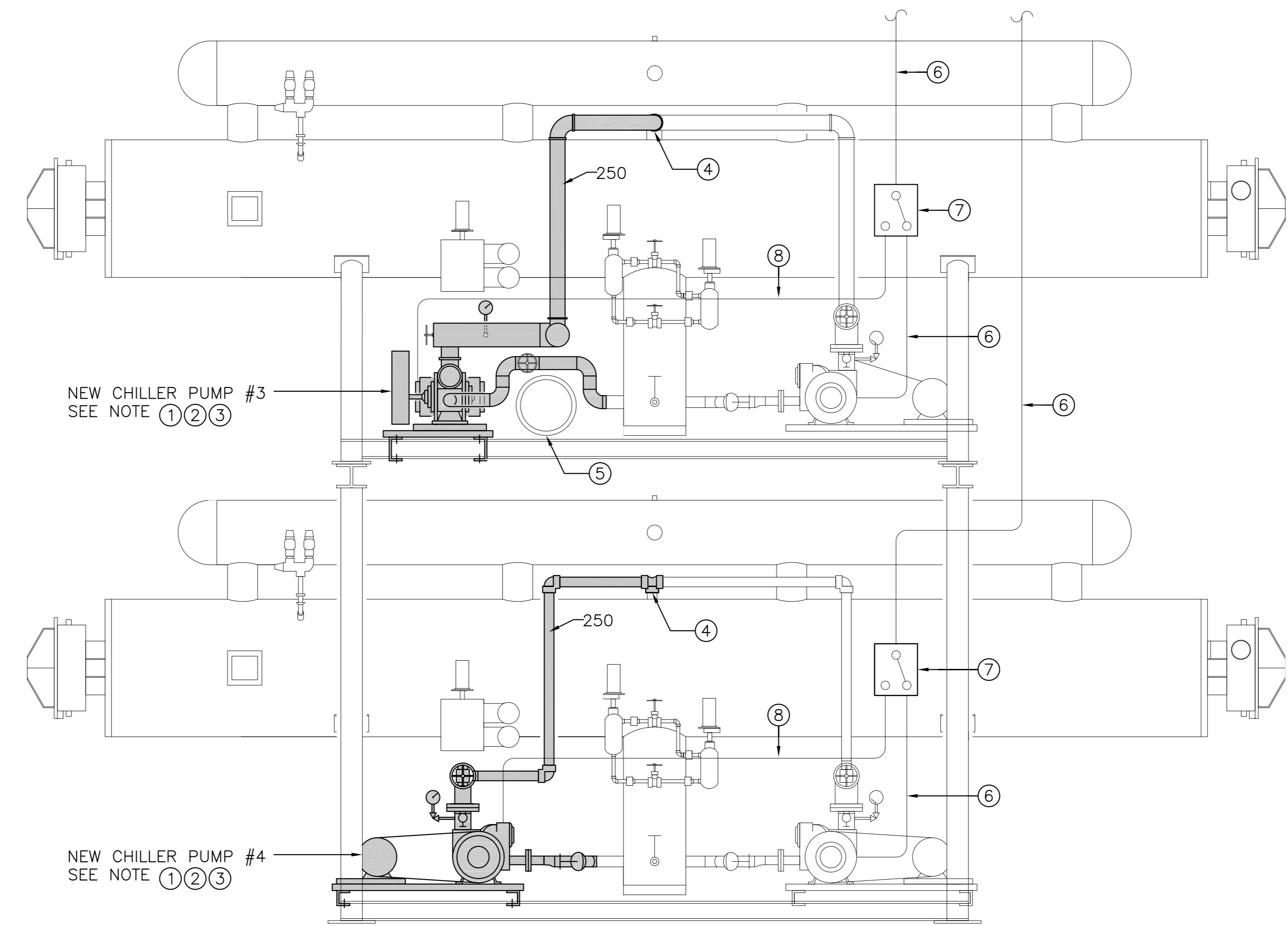
TYPICAL EVAPORATOR PIPING DETAILS

designed	conçu	date	17/08/15	date
drawn	dessiné	scale	AS SHOWN	échelle
checked	vérifié	sheet	3	of/ de 5
approved	approuvé	W.O.no.	5089	D.T.no.
dwg.no.	MO3			dessin no.

GENERAL NOTES

- CONTRACTORS TO CHECK AND VERIFY ALL DIMENSIONS ON SITE PRIOR TO DEMOLITION OR CONSTRUCTION AND REPORT ANY ERRORS OR OMISSIONS TO DEPARTMENTAL REPRESENTATIVE.
- CONTRACTORS MUST VISIT THE SITE & FULLY FAMILIARIZE THEMSELVES WITH THE SCOPE OF THE WORK.
- PREVENT THE SPREAD OF DUST & DEBRIS BEYOND THE WORK AREA AND CLEAN ALL SURFACES AT COMPLETION.
- MAKE GOOD ALL SURFACES AFFECTED BY THIS WORK.
- COORDINATE ALL SHUTDOWNS WITH THE DEPARTMENTAL REPRESENTATIVE.
- PROVIDE ALL LABOUR AND MATERIAL REQUIRED TO FORM A COMPLETE, FUNCTIONAL SYSTEM AS DESCRIBED ON DRAWINGS.

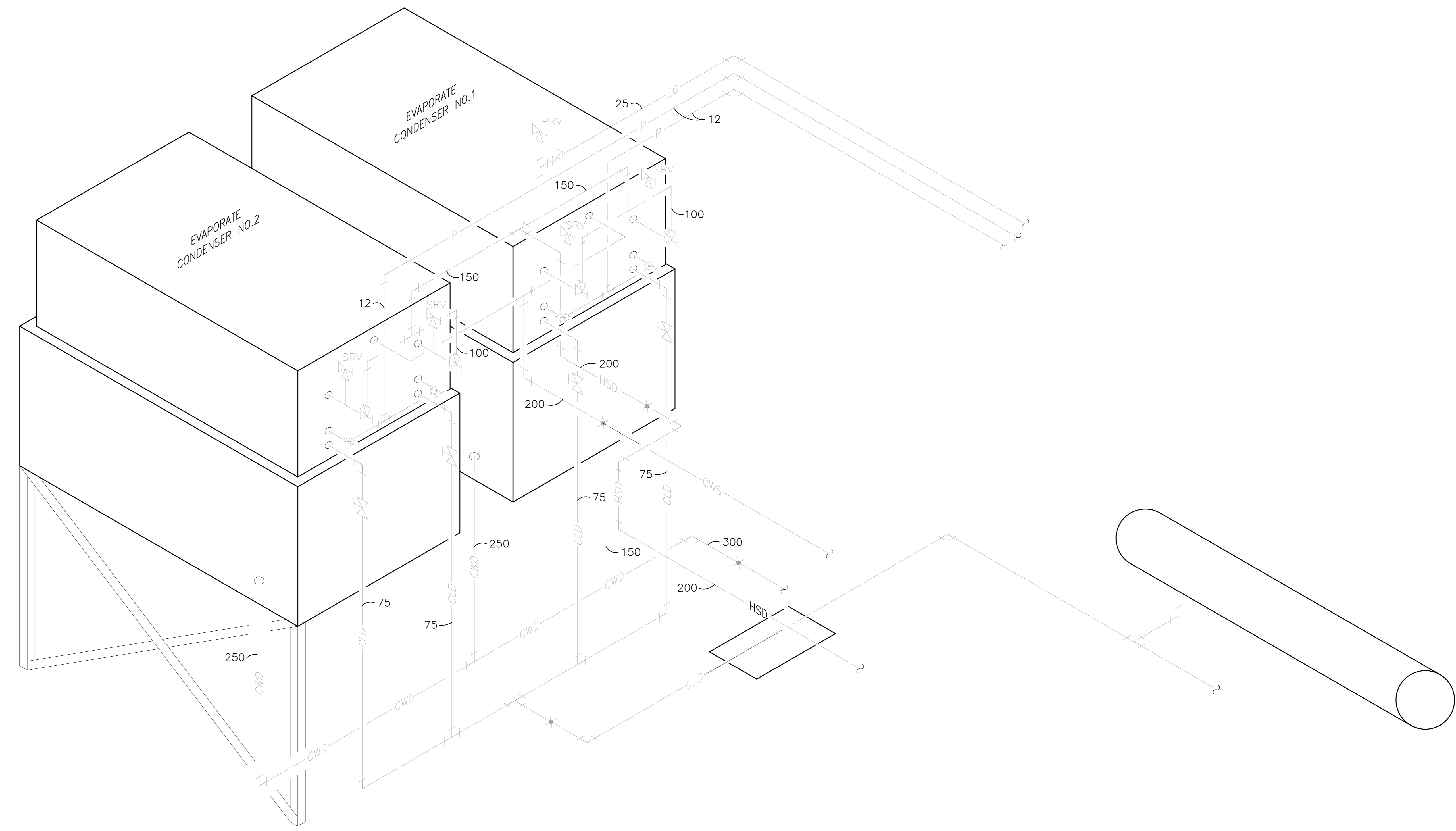
- DRAWING NOTES:**
- NEW CHILLER PUMPS TO BE POSITIVE DISPLACEMENT TYPE FOR R717 APPLICATION. PUMPS TO BE BASE MOUNTED C/W ALL VALVES, FITTINGS AND CONTROLS AS REQUIRED. PIPING, VALVES AND FITTINGS TO MATCH EXISTING. WIRE NEW PUMPS C/W STATUS OUTPUT AND START/STOP OPERATION, SIMILAR TO EXISTING PUMPS.
 - THIS CONTRACTOR TO SUPPLY AND INSTALL TWO NEW R717 PUMPS AS INDICATED. THESE PUMPS WILL MATCH THE EXISTING AND WILL BE TIED INTO THE EXISTING SYSTEM AND SHALL HAVE NEW VALVES AS SHOWN. MOUNT NEW PUMP TO EXISTING STRUCTURAL STAND. PROVIDE ADDITIONAL STRUCTURAL STEEL AS REQUIRED. PAINT AND FINISH TO MATCH EXISTING.
 - CHILLER PUMPS #3 & #4:
 - BLACKMER MODEL LGLD3 OR EQUIVALENT
 - MOTOR: 3 H.P.
 - SPEED: 1750 RPM
 - FLOW: 137 GPM (MATCH FLOW TO EXISTING PUMP FLOW)
 - MAX DIFFERENTIAL PRESSURE: 60 PSI
 - ELECTRICAL: 600/3/60
 - CONNECT NEW PIPING TO EXISTING AT THIS APPROXIMATE LOCATION. PROVIDE ADDITIONAL PIPING AND FITTINGS AS REQUIRED TO MAKE CONNECTION. COORDINATE EXACT ROUTING ON SITE WITH EXISTING EQUIPMENT.
 - EXISTING 300mmØ CHILLED WATER PIPING. PROVIDE OFFSETS AROUND EXISTING PIPING AS REQUIRED.
 - EXISTING WIRING TO CHILLER PUMP.
 - SUPPLY AND INSTALL NEW 30A, 600V, 3P MANUAL DOUBLE THROW SELECTOR SWITCH EQUAL EATON DT3636UGK IN NEMA 1 ENCLOSURE. ALL ELECTRICAL WORK TO BE CARRIED OUT WHILE AFFECTED CIRCUITS ARE DE-ENERGIZED. COORDINATE WITH OWNER FOR GIVING MINIMUM 3 WORKING DAYS NOTICE.
 - SUPPLY AND INSTALL NEW 3 #12 600V COPPER TECK CABLE BETWEEN NEW SELECTOR SWITCH AND NEW CHILLER PUMP.



1 CHILLER PUMPS #3 & #4 PIPING DETAIL
 MO4 N.T.S.

PIPING LEGEND

RELIEF PIPING	— R —
WET SUCTION RETURN	— WSR —
HOT GAS	— HG —
LIQUID FEED	— LF —
DEFROST RELIEF	— DR —
PURGE	— P —
EQUALIZER	— EQ —
HIGH STAGE DISCHARGE	— HSD —
CONDENSER WATER DRAIN	— CWD —
CONDENSER WATER SUPPLY	— CWS —



2 EXISTING EVAPORATIVE CONDENSER PIPING DETAIL
 MO4 N.T.S.

KEY PLAN

No.	Date	Revision	By
0	25/09/15	ISSUED FOR TENDER	RAN
Date Printed: 20 AUG 2015		Date imprimée:	

- Verify all dimensions and site conditions and be responsible for same.
- Vérifier toutes les dimensions et l'état des lieux et en assumer la responsabilité.

A	A Detail no. No. du détail	A
B	B Location drawing no. sur dessin no.	B
C	C Drawing no. dessin no.	C

project: NRC AMMONIA SYSTEM UPGRADE

drawing: ST. JOHNS, NL

CHILLER PUMP AND EXISTING EVAPORATIVE CONDENSER PIPING DETAILS

designed	compu	date	date
W. NEWTON		17/08/15	
drawn	dessiné	scale	échelle
C. LODGE		AS SHOWN	
checked	vérifié	sheet	feuille
		4	of/ de 5
approved	approuvé	W.D.no.	D.T.no.
		5089	
dwg.no.	MO4		dessin no.

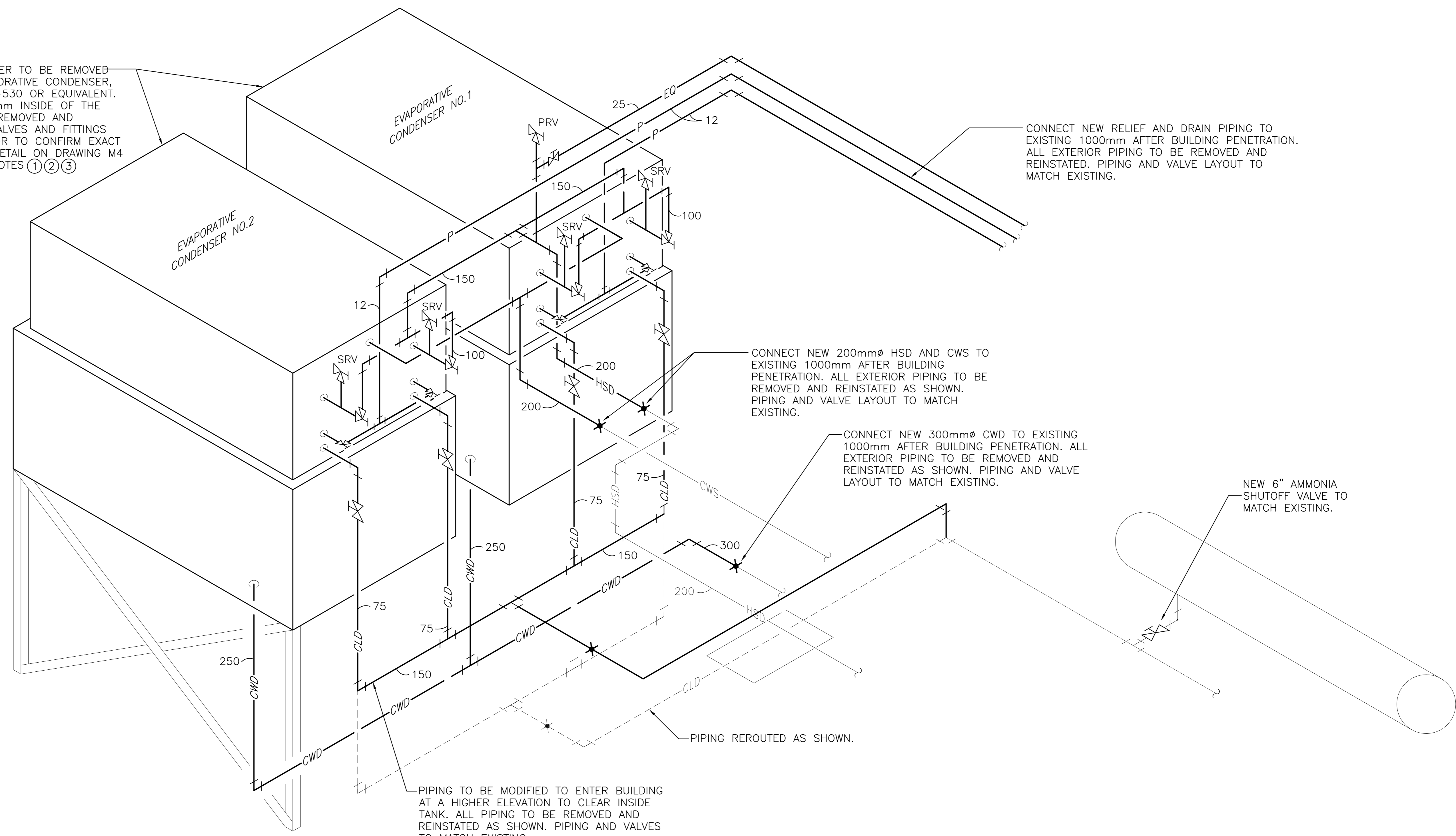
DRAWING NOTES:

- ① EVAPORATIVE CONDENSER NO.1 & NO.2:
 - BALTIMORE AIRCOIL MODEL VXC-530
 - FAN MOTOR: 20 H.P.
 - SPEED: 1800 RPM
 - CAPACITY: 1993 kW
 - REFRIGERANT TYPE: R717
 - E.W.B: 21°C
 - ELECTRICAL: 600/3/60
- ② IF NEW EVAPORATIVE CONDENSERS DO NOT MATCH EXISTING, THE NEW CONDENSER SUPPORT BASE SHALL BE DESIGNED TO FIT THE EXISTING STRUCTURE.
- ③ DISCONNECT AND RECONNECT ELECTRICAL FEEDS FOR CONDENSERS. ALL ELECTRICAL WORK TO BE CARRIED OUT WHILE AFFECTED CIRCUITS ARE DE-ENERGIZED. COORDINATE WITH OWNER FOR GIVING MINIMUM 3 WORKING DAYS NOTICE.
- ④ CONTRACTOR TO RECONNECT ALL EXISTING CONTROL AND VERIFY OPERATION.

EXISTING EVAPORATIVE CONDENSER TO BE REMOVED AND REPLACED WITH NEW EVAPORATIVE CONDENSER, BALTIMORE AIRCOIL MODEL VXC-530 OR EQUIVALENT. ALL EXTERIOR PIPING TO 1000mm INSIDE OF THE BUILDING ENVELOPE SHALL BE REMOVED AND REPLACED WITH NEW. PIPING, VALVES AND FITTINGS TO MATCH EXISTING. CONTRACTOR TO CONFIRM EXACT ARRANGEMENTS ON SITE. SEE DETAIL ON DRAWING M4 FOR MORE DETAIL. REFER TO NOTES ①②③

PIPING LEGEND

RELIEF PIPING	— R —
WET SUCTION RETURN	— WSR —
HOT GAS	— HG —
LIQUID FEED	— LF —
DEFROST RELIEF	— DR —
PURGE	— P —
EQUALIZER	— EQ —
HIGH STAGE DISCHARGE	— HSD —
CONDENSER WATER DRAIN	— CWD —
CONDENSER WATER SUPPLY	— CWS —



GENERAL NOTES

- CONTRACTORS TO CHECK AND VERIFY ALL DIMENSIONS ON SITE PRIOR TO DEMOLITION OR CONSTRUCTION AND REPORT ANY ERRORS OR OMISSIONS TO DEPARTMENTAL REPRESENTATIVE.
- CONTRACTORS MUST VISIT THE SITE & FULLY FAMILIARIZE THEMSELVES WITH THE SCOPE OF THE WORK.
- PREVENT THE SPREAD OF DUST & DEBRIS BEYOND THE WORK AREA AND CLEAN ALL SURFACES AT COMPLETION.
- MAKE GOOD ALL SURFACES AFFECTED BY THIS WORK.
- COORDINATE ALL SHUTDOWNS WITH THE DEPARTMENTAL REPRESENTATIVE.
- PROVIDE ALL LABOUR AND MATERIAL REQUIRED TO FORM A COMPLETE, FUNCTIONAL SYSTEM AS DESCRIBED ON DRAWINGS.

1 NEW EVAPORATIVE CONDENSER DETAIL
M05 N.T.S.

KEY PLAN

0	25/09/15	ISSUED FOR TENDER	RAN
No.	Date	Revision	By
Date Printed: 20 AUG 2015 Date imprimée:			

- Verify all dimensions and site conditions and be responsible for same
- Vérifier toutes les dimensions et l'état des lieux et en assumer la responsabilité

A	A Detail no. / No. du détail	A
B	B Location drawing no. / sur dessin no.	B
C	C Drawing no. / dessin no.	C

project: **NRC AMMONIA SYSTEM UPGRADE** projet:

drawing: **ST. JOHNS, NL** dessin:
NEW EVAPORATIVE CONDENSER PIPING DETAIL

designed	conçu	date	date
W. NEWTON		17/08/15	
drawn	dessiné	scale	échelle
C. LODGE		AS SHOWN	
checked	vérifié	sheet	feuille
		5	5
approved	approuvé	W.D.no.	D.T.no.
		5089	

dwg.no.: **M05** dessin no.: