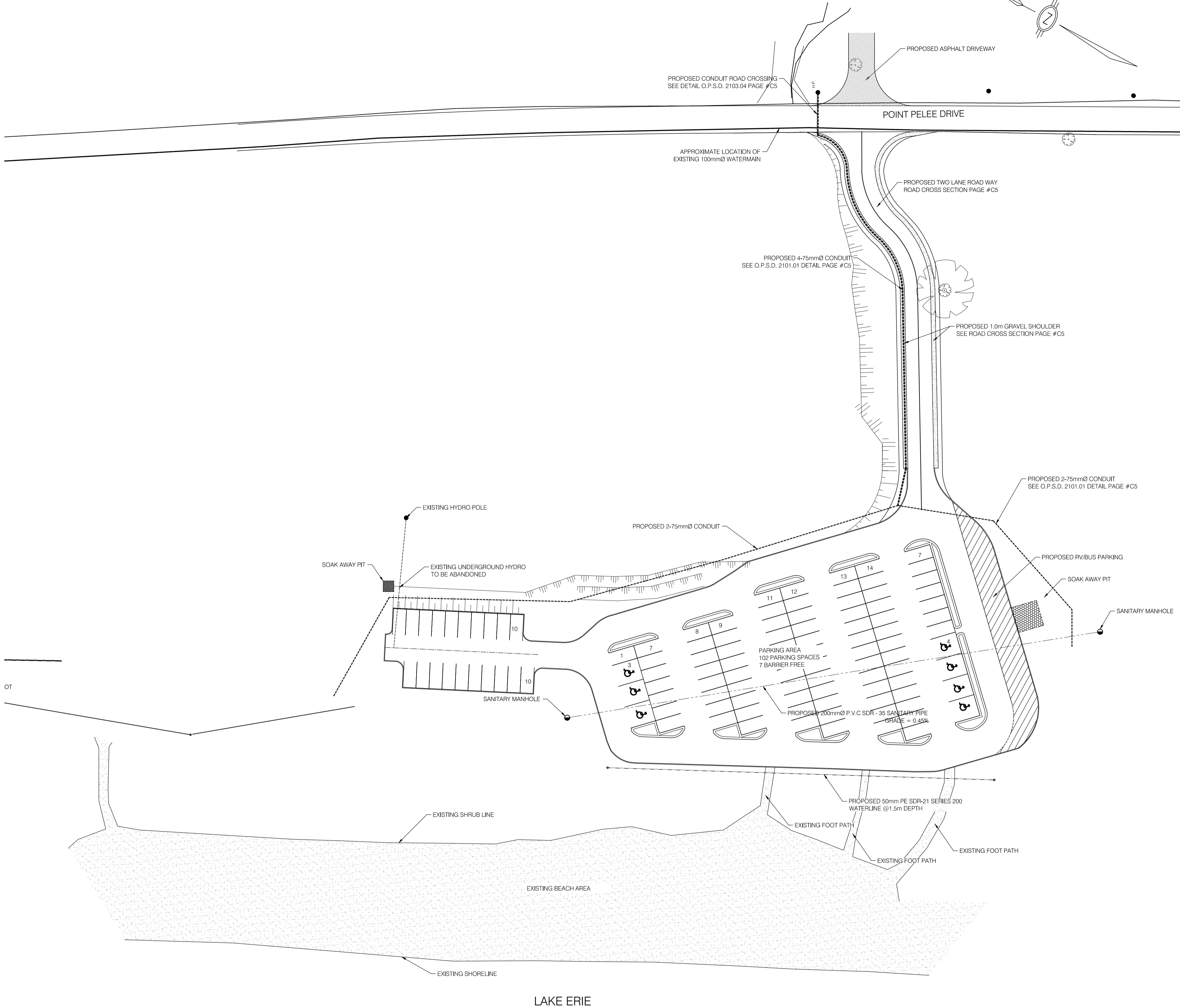




KEY PLAN  
N.T.S

LIST OF DRAWINGS	
SHEET No.	SHEET TITLE
C1	SITE PLAN
C2	DEMOLITION AND REMOVAL
C3	GRADING AND SERVICING
C4	PARKING LOT
C5	PLAN, PROFILE
C6	DETAILS AND CROSS SECTIONS

LEGEND	
EXISTING BEACH	
PROPOSED HYDRO DUCT	
PROPOSED SANITARY MAIN	
PROPOSED WATER LINE	
EXISTING WATER MAIN	
BUS & R.V. BAY	



Public Works and  
Government Services Canada  
Travaux publics et  
Services gouvernementaux Canada

Brantford Studio  
127 Brant Ave., Brantford,  
ON N3T 3H5  
519.756.6331 1.877.789.6662  
www.mmmc.on.ca

K-W Studio  
290 King St. E., Suite 201, Kitchener,  
ON N2G 2L3  
519.575.2227 1.877.789.6662

ENGINEERS  
PLANNERS  
ARCHITECTS

04		
03		
02		
01		
revision	JULY 31, 2015	date

Do not scale drawings.  
Verify all dimensions and conditions on site and immediately  
notify the Departmental Representative of all discrepancies.

	A Detail No. No. du détail
	B drawing no. — where detail required dessin no. — où détail exigé
	C drawing no. — where detailed dessin no. — où détaillé

project title  
titre du projet  
**LEAMINGTON** **ONTARIO**  
  
POINT PELEE NATIONAL PARK  
  
**NORTHWEST BEACH IMPROVEMENTS  
PHASE 1**

drawing title  
titre du dessin  
**SITE PLAN**

drawn by  
dessiné par  
P.S.

designed by  
conc par  
B.D.C.

approved by  
approuvé par  
D.A.J.

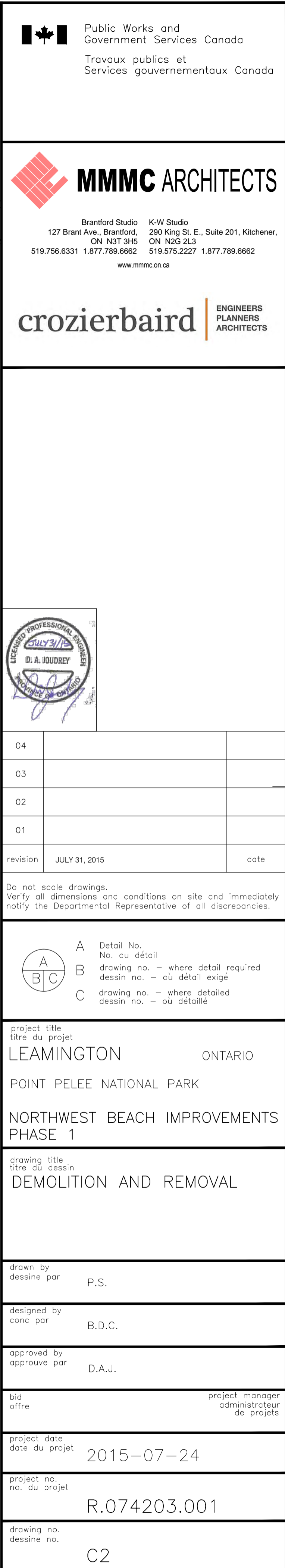
bid  
offre

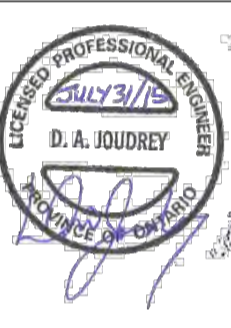
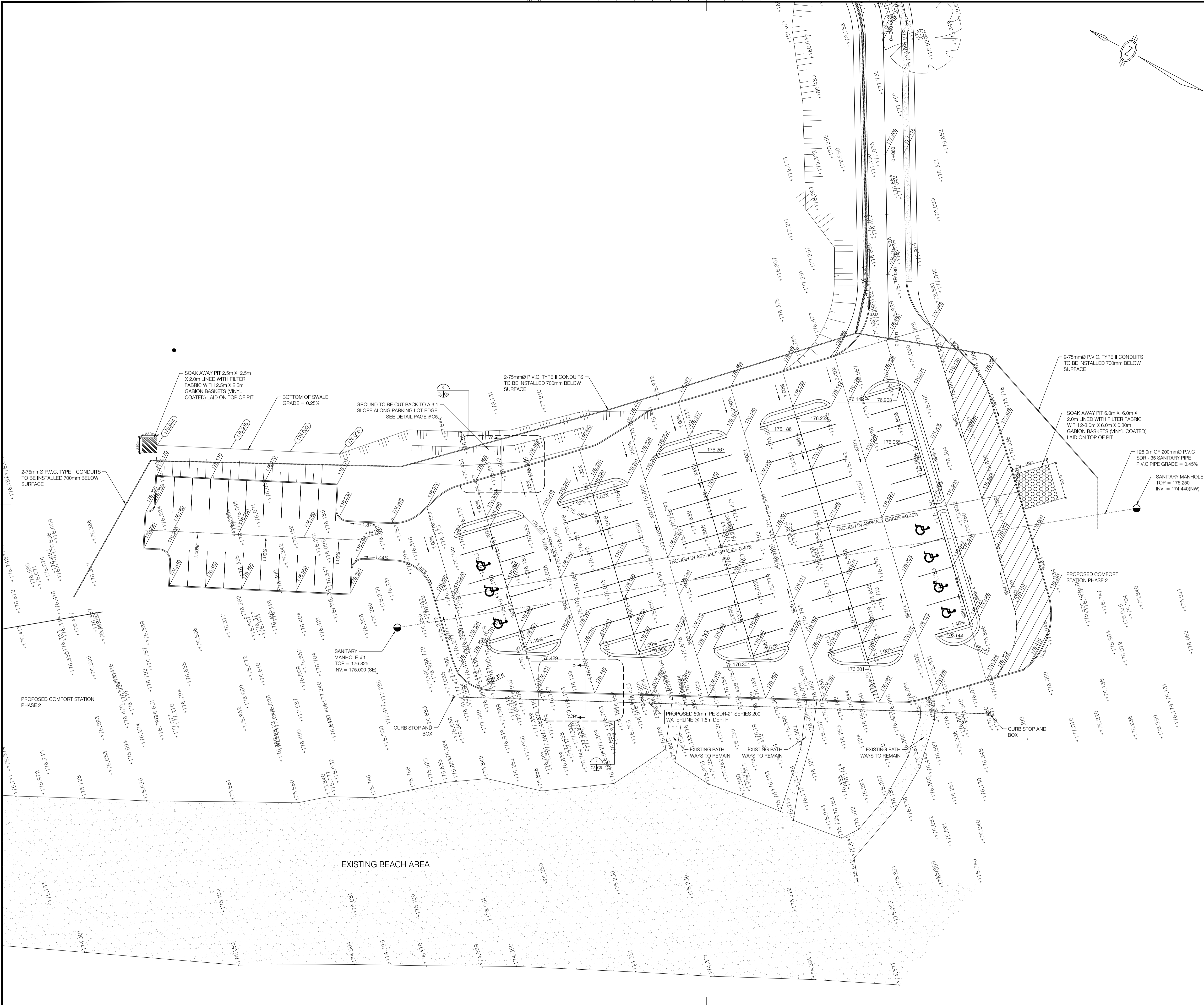
project manager  
administrateur  
de projets

project date  
date du projet  
2015-07-24

project no.  
no. du projet  
R.074203.001

drawing no.  
dessin no.  
C1





04		
03		
02		
01		
revision	JULY 31, 2015	date

Do not scale drawings.  
Verify all dimensions and conditions on site and immediately  
notify the Departmental Representative of all discrepancies.

A	Detail No.
B	drawing no. - where detail required
C	drawing no. - where detailed

project title  
titre du projet  
**LEAMINGTON** ONTARIO

**POINT PEELE NATIONAL PARK**

**NORTHWEST BEACH IMPROVEMENTS  
PHASE 1**

drawing title  
titre du dessin  
**GRADING AND SERVICING**

drawn by  
dessiné par  
**P.S.**

designed by  
conc par  
**B.D.C.**

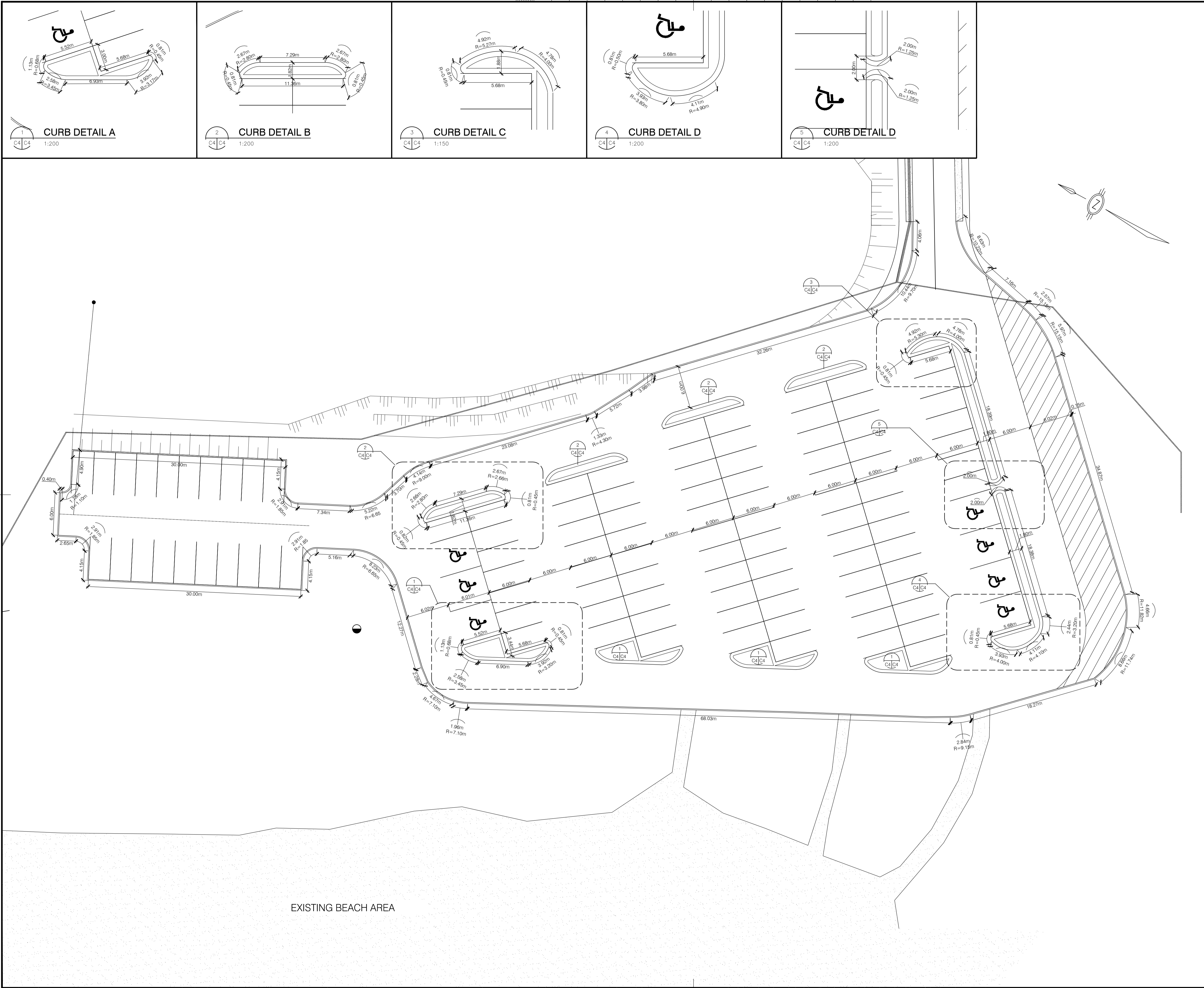
approved by  
approuvé par  
**D.A.J.**

bid  
offre  
project manager  
administrateur  
de projets

project date  
date du projet  
**2015-07-24**

project no.  
no. du projet  
**R.074203.001**

drawing no.  
dessiné no.  
**C3**



Public Works and  
Government Services Canada  
Travaux publics et  
Services gouvernementaux Canada

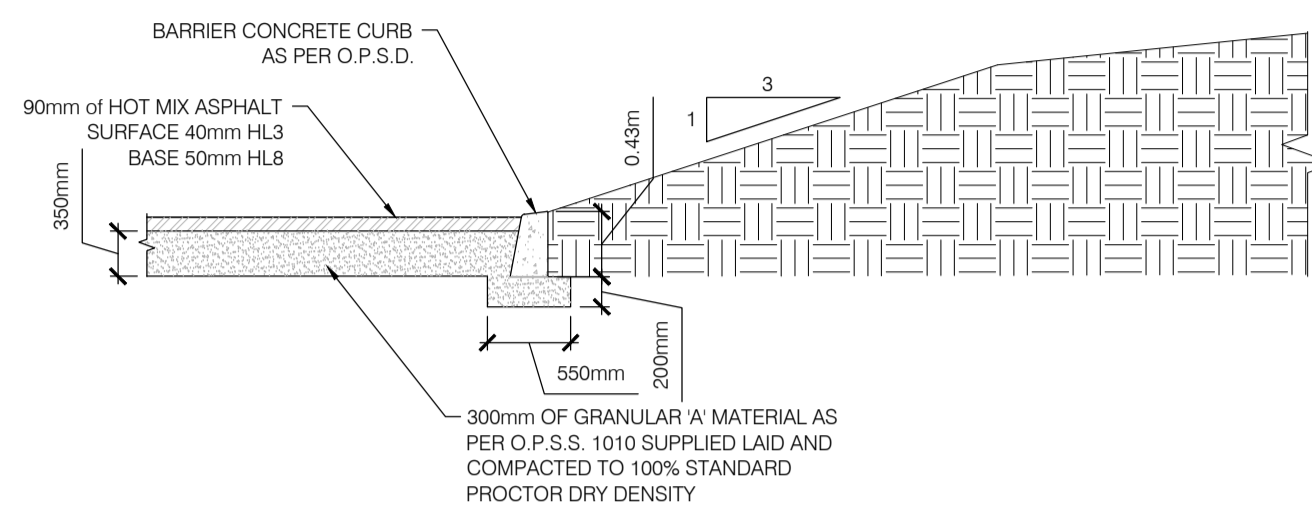
Brantford Studio K-W Studio  
127 Brant Ave., Brantford, ON N3T 3H5  
519.756.6331 1.877.789.6662  
290 King St. E., Suite 201, Kitchener, ON N2G 2L3  
519.575.2227 1.877.789.6662  
www.mmmc.on.ca

ENGINEERS  
PLANNERS  
ARCHITECTS

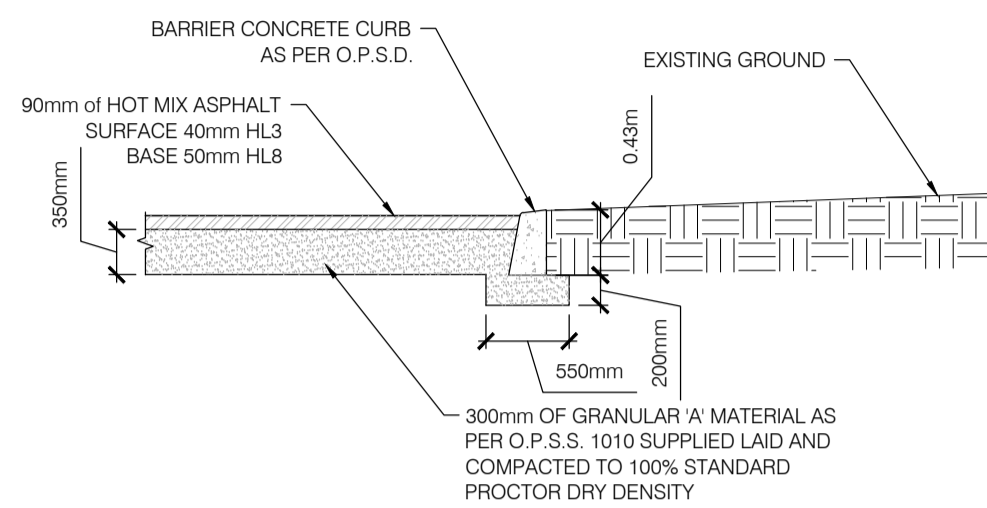
04		
03		
02		
01		
revision	JULY 31, 2015	date
Do not scale drawings. Verify all dimensions and conditions on site and immediately notify the Departmental Representative of all discrepancies.		

<div><div>A</div><div>B</div><div>C</div></div>	<div>A Detail No. No. du détail</div> <div>B drawing no. – where detail required dessin no. – où détail exigé</div> <div>C drawing no. – where detailed dessin no. – où détaillé</div>
project title titre du projet LEAMINGTON ONTARIO	
POINT PEELE NATIONAL PARK NORTHWEST BEACH IMPROVEMENTS PHASE 1	
drawing title titre du dessin PARKING LOT AND CURB LAYOUT	
drawn by dessiné par	P.S.
designed by conc par	B.D.C.
approved by approuvé par	D.A.J.
bid offre	project manager administrateur de projets
project date date du projet	2015-07-24
project no. no. du projet	R.074203.001
drawing no. dessin no.	C4

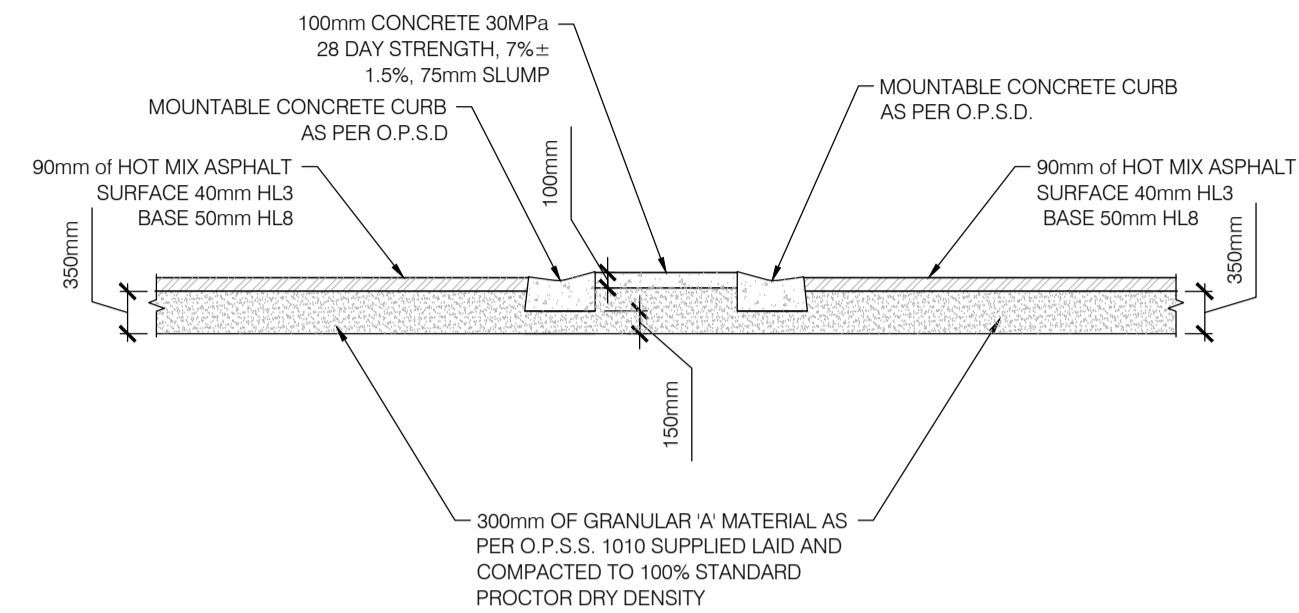




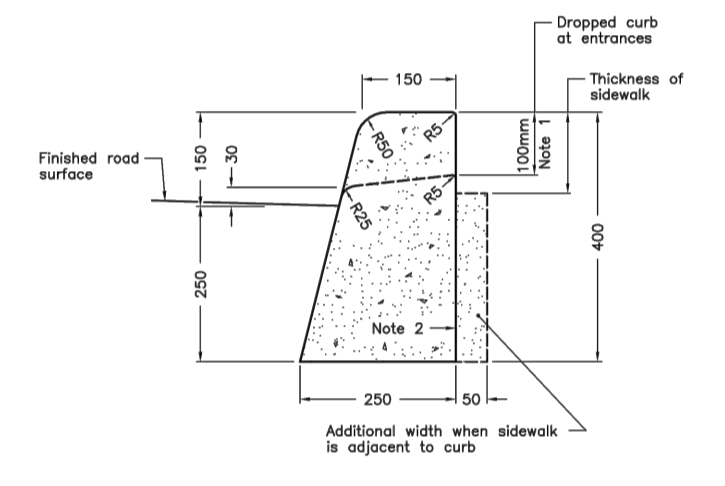
**CROSS SECTION 'A'-A'**  
SCALE: 1:50



**CROSS SECTION 'B'-B'**  
SCALE: 1:50

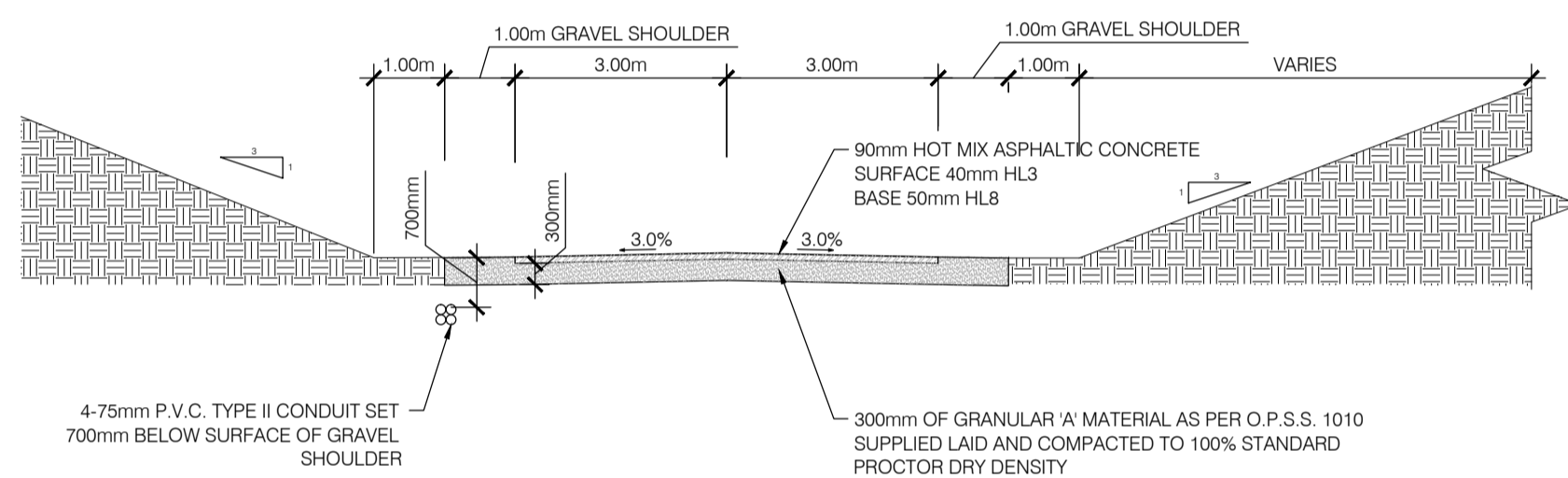


**ISLAND CROSS SECTION (TYPICAL)**  
SCALE: 1:50

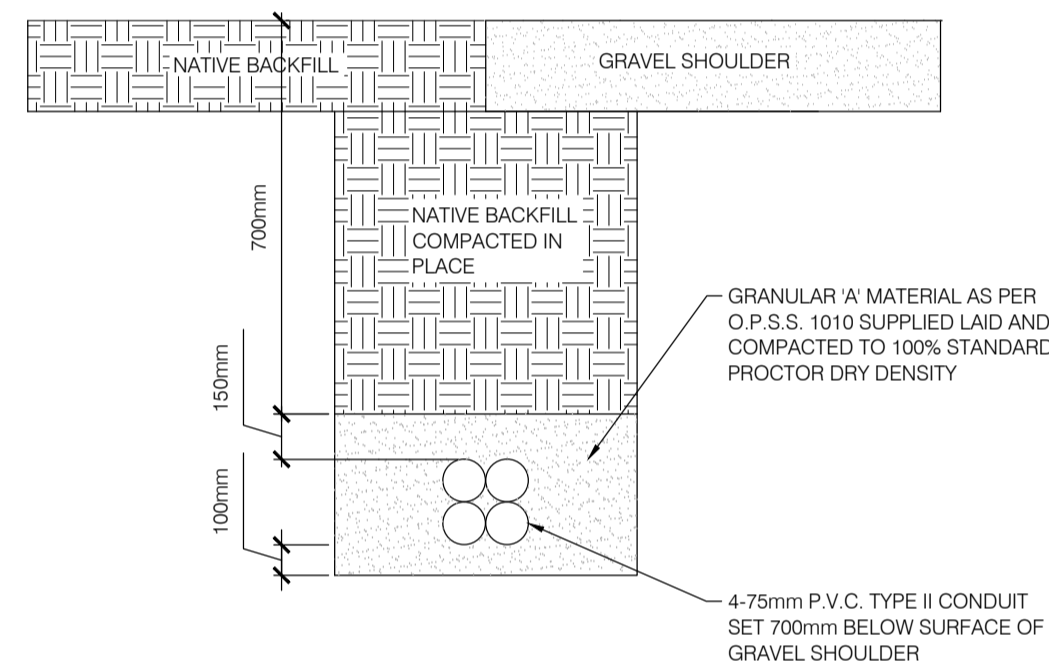


**NOTES:**  
1 When sidewalk is continuously adjacent, the dropped curb at entrances shall be reduced to 75mm.  
2 For sloping procedure a 5% batter is acceptable.  
A Treatment of entrances shall be according to OPSD 351.010.  
B Outlet treatment shall be according to the OPSD 610 Series.  
C The transition from one curb type to another shall be a minimum length of 3.0m, except in conjunction with guide rail where it shall be according to the OPSD 900 Series.  
D All dimensions are in millimetres unless otherwise shown.

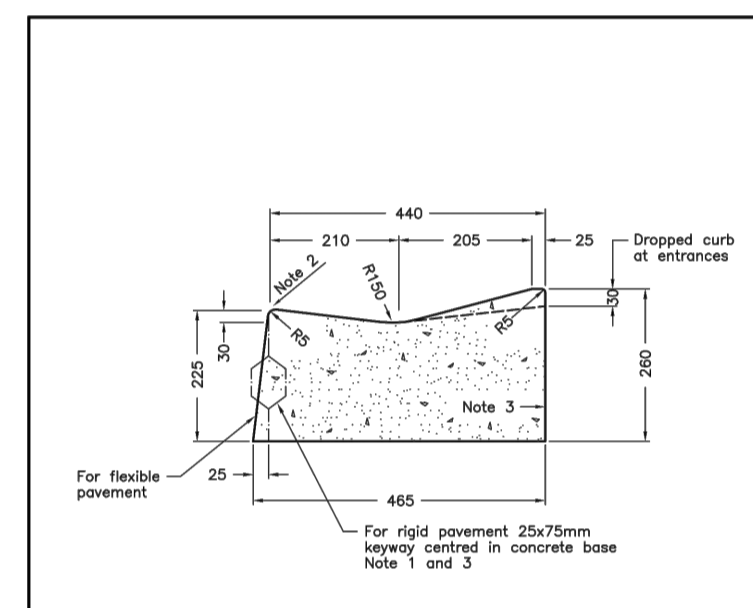
ONTARIO PROVINCIAL STANDARD DRAWING  
CONCRETE BARRIER CURB  
Nov 2012 Rev 2  
OPSD 600.110



**CROSS SECTION 'C'-C'**  
SCALE: 1:50

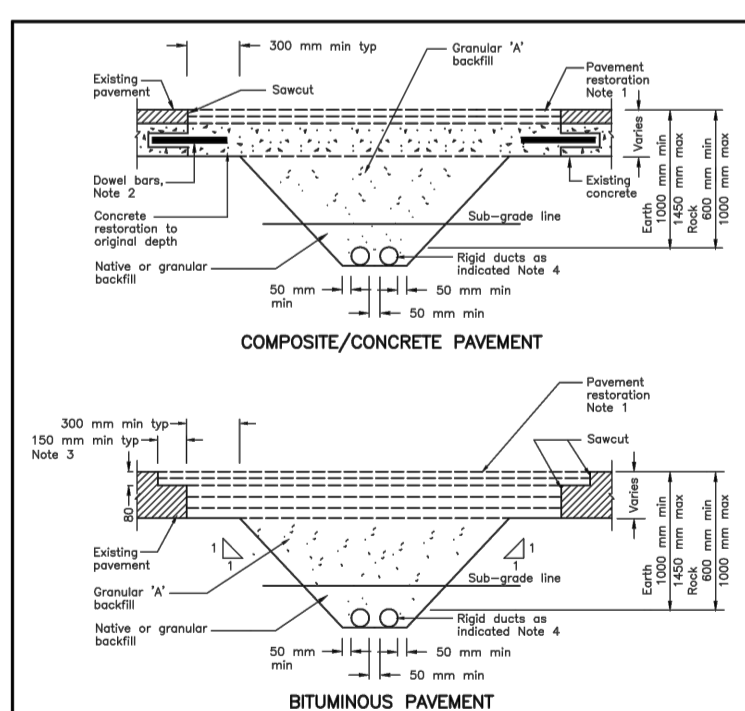


**HYDRO CONDUIT TRENCH (TYPICAL)**  
SCALE: 1:50



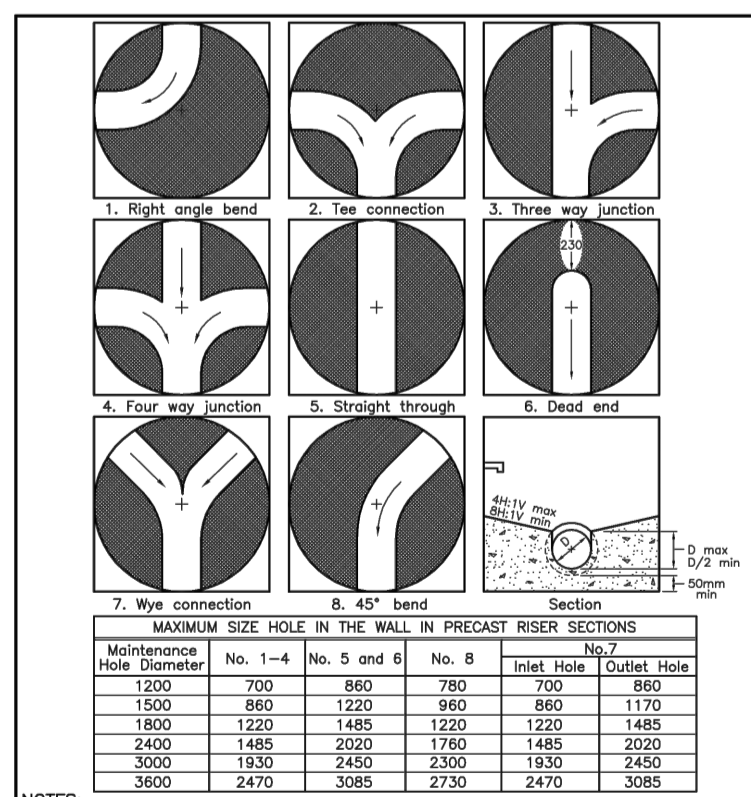
**NOTES:**  
1 When curb and gutter is adjacent to concrete pavement or base, this drawing shall be used in conjunction with OPSD 552.010 and 552.020.  
2 Flexible and composite pavement shall be placed 5mm above the adjacent edge of gutter.  
3 For sloping procedure a 5% batter is acceptable.  
A Treatment of entrances shall be according to OPSD 351.010.  
B Outlet treatment shall be according to the OPSD 610 Series.  
C The transition from one curb type to another shall be a minimum length of 3.0m, except in conjunction with guide rail where it shall be according to the OPSD 900 Series.  
D All dimensions are in millimetres unless otherwise shown.

ONTARIO PROVINCIAL STANDARD DRAWING  
CONCRETE MOUNTABLE CURB WITH NARROW GUTTER  
Nov 2012 Rev 2  
OPSD 600.100



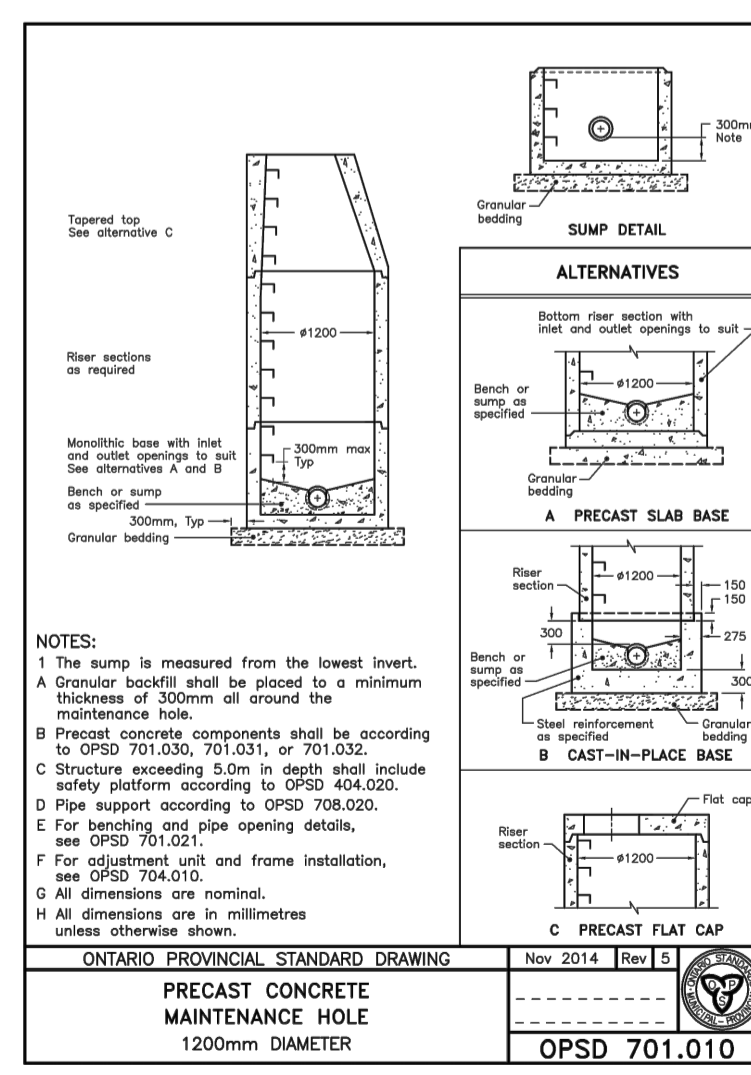
**NOTES:**  
1 Bituminous pavement restoration to match existing type unless otherwise specified. The surface course & top binder to be placed in 40 mm lifts, other lifts not to exceed 80 mm.  
2 Dowel bars are required only in concrete base/pavement with load transfer devices at joints. Dowels to be 32 mm dia, 450 mm long, epoxy coated, installed at 300 mm intervals, centered vertically in concrete base, and set 225 mm in 35 mm holes with epoxy grout. Dowels shall be aligned parallel to the longitudinal axis of the pavement.  
3 Where existing pavement depth is between 80 mm and 120 mm the 150 mm wide strip joint shall be 40 mm deep.  
4 If rock, the ducts shall be placed on 150 mm sand bedding.  
A All dimensions are in millimetres unless otherwise shown.

ONTARIO PROVINCIAL STANDARD DRAWING  
RIGID DUCT INSTALLATION IN EXISTING PAVED AREA GRANULAR BACKFILL METHOD  
Date 1990 06 04 Rev  
OPSD - 2103.04

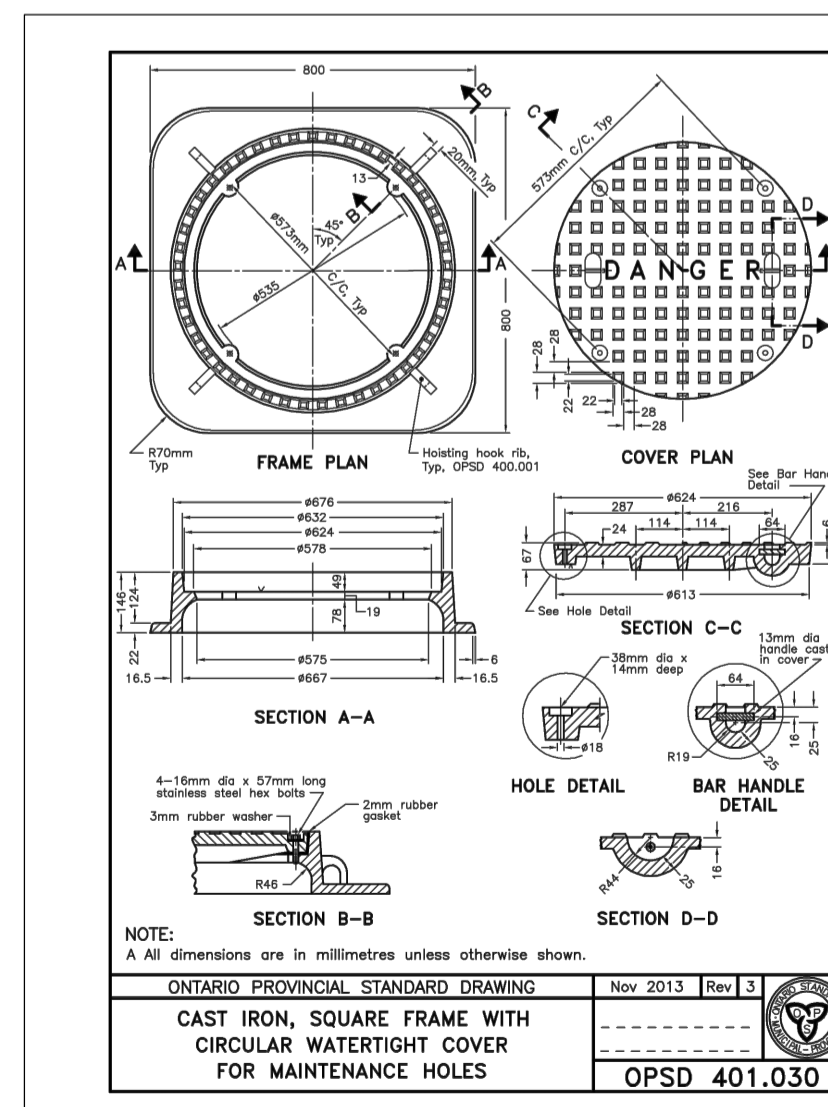


**NOTES:**  
1 Slopes shall be maintained from the outlet hole opening for top of benching.  
A Concrete for benching shall be 30Mpa.  
B When benching in hard-rock, it shall be given wood float finish, channel shall be given steel trowel finish.  
C Benchings slope and height shall be as specified.  
D When benching, maintenance holes that are 1200mm in diameter with a bottom channel for 200 or 250mm size may be pre-benching at the manufacturer with standardized benching slope and channel orientation.  
E All dimensions are in millimetres unless otherwise shown.

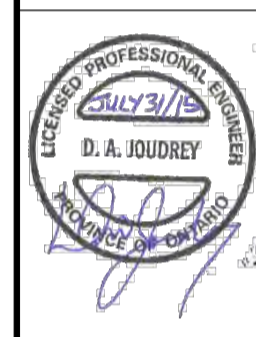
ONTARIO PROVINCIAL STANDARD DRAWING  
MAINTENANCE HOLE BENCHING AND PIPE OPENING ALTERNATIVES  
Nov 2014 Rev 4  
OPSD 701.021



ONTARIO PROVINCIAL STANDARD DRAWING  
PRECAST CONCRETE MAINTENANCE HOLE 1200mm DIAMETER  
Nov 2014 Rev 5  
OPSD 701.010



ONTARIO PROVINCIAL STANDARD DRAWING  
CAST IRON SQUARE FRAME WITH CIRCULAR WATERTIGHT COVER FOR MAINTENANCE HOLES  
Nov 2013 Rev 3  
OPSD 401.030



04		
03		
02		
01		
revision	JULY 31, 2015	date

Do not scale drawings.  
Verify all dimensions and conditions on site and immediately notify the Departmental Representative of all discrepancies.

A	Detail No.
B	No. du détail
C	drawing no. - where detail required dessin no. - où détail exigé
D	drawing no. - where detailed dessin no. - où détaillé

project title  
titre du projet  
**LEAMINGTON** ONTARIO  
POINT PEELE NATIONAL PARK

**NORTHWEST BEACH IMPROVEMENTS PHASE 1**

drawing title  
titre du dessin  
**DETAILS AND CROSS SECTIONS**

drawn by  
dessiné par  
P.S.

designed by  
conc par  
B.D.C.

approved by  
approuvé par  
D.A.J.

bid  
offre  
project manager  
administrateur de projets

project date  
date du projet  
2015-07-24

project no.  
no. du projet  
R.074203.001

drawing no.  
dessin no.  
C6