

Doorway opening in terracotta wall will be completed by NRC before contractor set-up

**STEP 1**  
Construct a solid hoarding wall made of plywood on wood studs sealed with polyethylene and tape in room SG-26, from the east wall to the west wall, from floor to ceiling, which will separate the two existing garage doors.

**STEP 2**  
Construct an operational Type 3, maximum precaution enclosure for the shaded area along with operational breathing apparatus for supplied air respiratory protection. Perform any ceiling entries to identify and establish upper seals (around any wall penetrations, etc.) using as a minimum, Type 2, intermediate precautions. All upper seals shall be double layered, with both layers independently providing an effective seal. The first layer shall be completely covered by the second layer, and installed in such a way that the second layer can be removed leaving the first layer intact. **(DO NOT COMMENCE ABATEMENT UNTIL PHASE 1B HAS BEEN COMPLETED.)**

Garage door and access to Type 3 abatement enclosure

**GENERAL NOTES**

1. DRAWING TO BE READ IN CONJUNCTION WITH SPECIFICATION SECTIONS 02 82 00.01, 02 82 00.02 AND 02 82 00.03
2. DO NOT SCALE DRAWING.
3. BASE DRAWINGS PROVIDED BY CLIENT.

**LEGEND:**

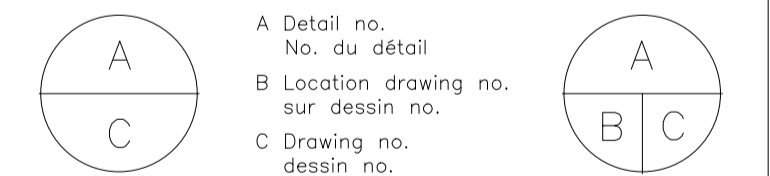
PHASE 1A TYPE 3 ABATEMENT ENCLOSURE



No.	Date	Revision	By:
0	24 08 2015	ORIGINAL	B.H.

Date Printed: \_\_\_\_\_ Date imprimée: \_\_\_\_\_

- o Verify all dimensions and site conditions and be responsible for same
- o Vérifier toutes les dimensions et l'état des lieux et en assumer la responsabilité

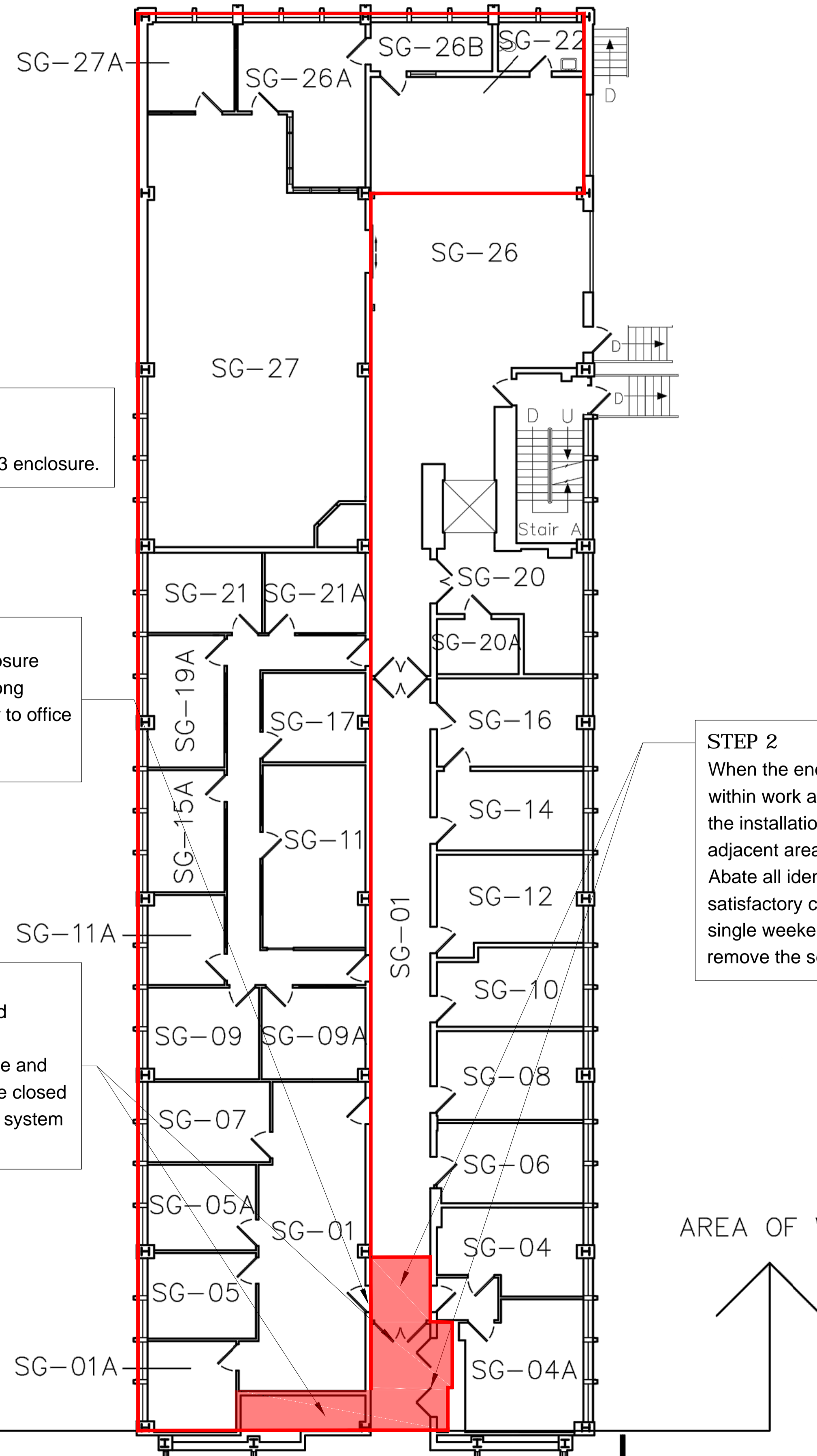
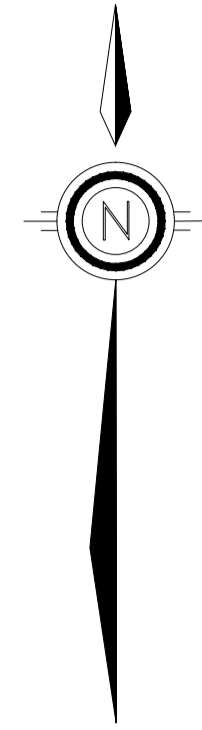


project: PHASED ASBESTOS ABATEMENT GROUND FLOOR SOUTH WING, BUILDING M-58, NRC, OTTAWA, ONTARIO

drawing: PHASE 1A ASBESTOS ABATEMENT PREPARATION DETAILS

designed	conçu	date	date
N.S.		08/2015	
drawn	dessiné	scale	échelle
R.P.		NTS	
checked	vérifié	sheet	feuille
B.H.		SHEET1 of/de SHEET3	
approved	approuvé	W.O.no.	D.T.no.
B.H.		BE-OT-021545	

dwg.no.: 5083-AB01 dessin no.:



**STEP 3**  
After Step 2, proceed during regular business hours with the abatement of all identified ACMs within the confines of the Phase 1A Type 3 enclosure.

**STEP 4**  
Following satisfactory clearance air sampling for Phase 1A tear down the enclosure leaving the temporary solid loading dock wall and the first-layer upper seals along the east corridor wall and east loading dock wall in place. Widening of the door to office SG-01 will be completed by NRC.

**STEP 1**  
Over a single weekend, using the existing supplied air breathing apparatus installed during Phase 1A, construct a separate Type 3 maximum precaution enclosure (excluding ceiling seals) that incorporates access to the vertical pipe and duct chase and a section of the corridor that includes the existing door to office SG-01, that must be closed and sealed (as per the shaded area). A separate decontamination system from the system already installed for Phase 1A will also be required.

**STEP 2**  
When the enclosure is fully set-up, remove ceiling tiles, ductwork within work and minimal areas of spray-on fire proofing to accommodate the installation of double upper seals separating the enclosure from adjacent areas (in the same fashion as described for Phase 01A, Step 3). Abate all identified ACMs within this separate enclosure, allowing for satisfactory clearance air sampling and enclosure tear-down over the same single weekend. During tear down when removing the upper seals, only remove the second layers, leaving the first layer intact.

AREA OF WORK

AREA OF WORK

**GENERAL NOTES**

1. DRAWING TO BE READ IN CONJUNCTION WITH SPECIFICATION SECTIONS 02 82 00.01, 02 82 00.02 AND 02 82 00.03
2. DO NOT SCALE DRAWING.
3. BASE DRAWINGS PROVIDED BY CLIENT.

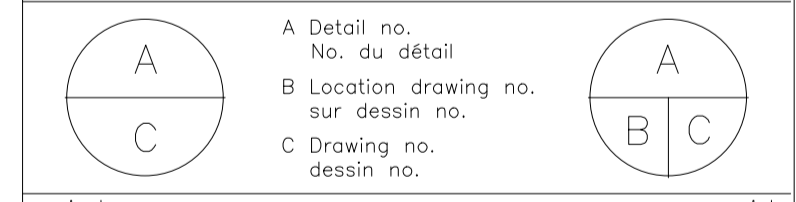
**LEGEND:**

PHASE 1B TYPE 3 ABATEMENT ENCLOSURE



No.	Date	Revision	By:
0	24 08 2015	ORIGINAL	B.H.

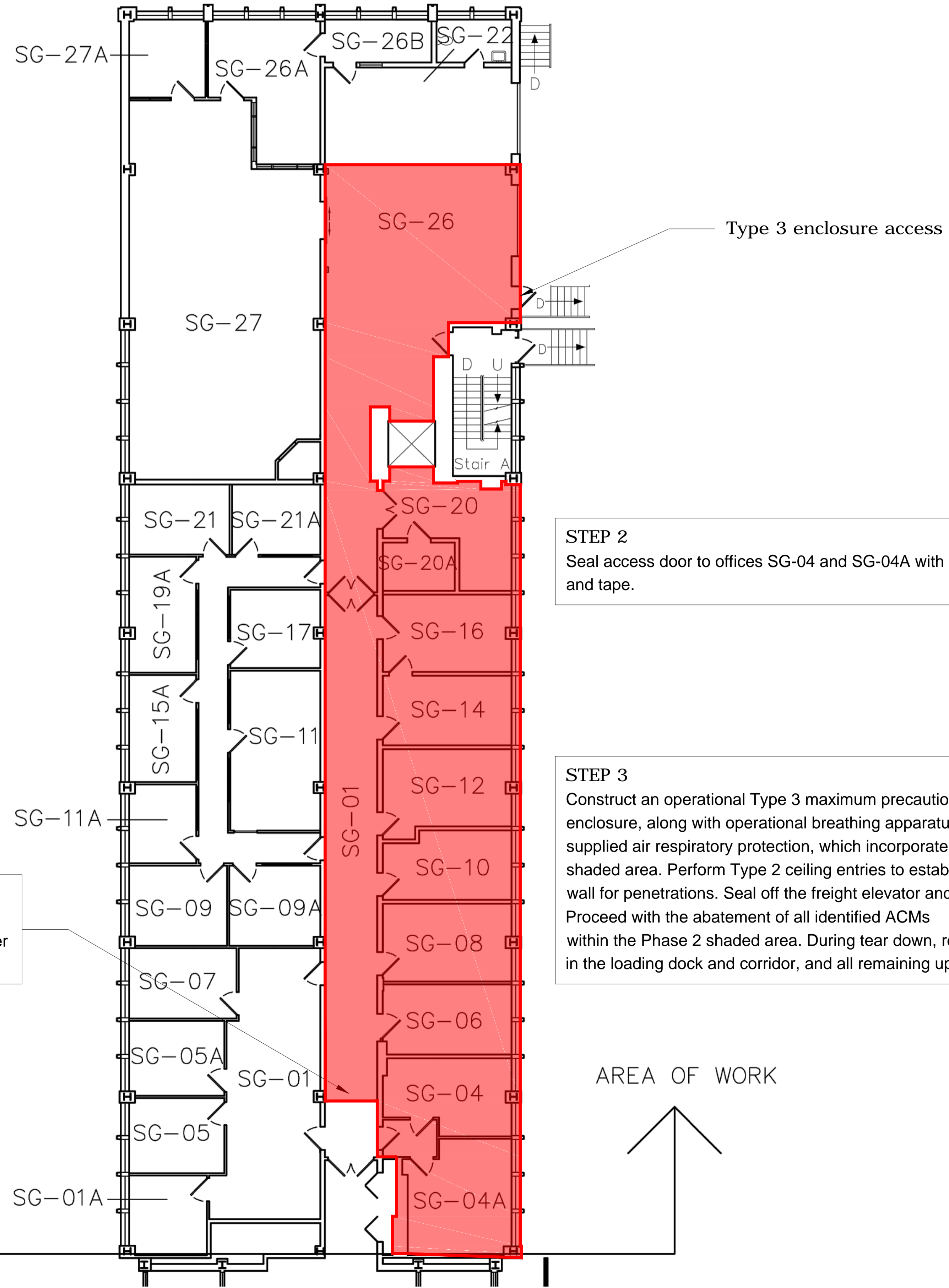
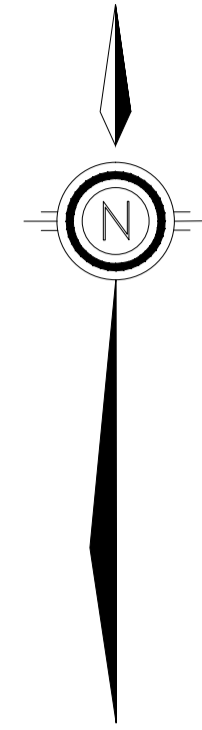
- o Verify all dimensions and site conditions and be responsible for same
- o Vérifier toutes les dimensions et l'état des lieux et en assumer la responsabilité



project: PHASED ASBESTOS ABATEMENT GROUND FLOOR SOUTH WING, BUILDING M-58, NRC, OTTAWA, ONTARIO

drawing: PHASE 1B ASBESTOS ABATEMENT PREPARATION AND EXECUTION DETAILS

designed	N.S.	conçu	date	08/2015	date
drawn	R.P.	dessiné	scale	NTS	échelle
checked	B.H.	vérifié	sheet	SHEET2 of/de SHEET3	feuille
approved	B.H.	approuvé	W.O.no.	BE-OT-021545	D.T.no.



**STEP 1**  
 Construct a solid hoarding wall comprised of plywood on wood studs and sealed with tape from floor to ceiling, directly beneath the east/west upper seal in the corridor, which remains from Phase 1B.

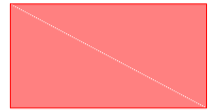
**STEP 2**  
 Seal access door to offices SG-04 and SG-04A with polyethylene sheeting and tape.

**STEP 3**  
 Construct an operational Type 3 maximum precaution enclosure, along with operational breathing apparatus for supplied air respiratory protection, which incorporates the shaded area. Perform Type 2 ceiling entries to establish upper seals wall for penetrations. Seal off the freight elevator and stair A. Proceed with the abatement of all identified ACMs within the Phase 2 shaded area. During tear down, remove the solid walls in the loading dock and corridor, and all remaining upper seals.

**GENERAL NOTES**

1. DRAWING TO BE READ IN CONJUNCTION WITH SPECIFICATION SECTIONS 02 82 00.01, 02 82 00.02 AND 02 82 00.03
2. DO NOT SCALE DRAWING.
3. BASE DRAWINGS PROVIDED BY CLIENT.

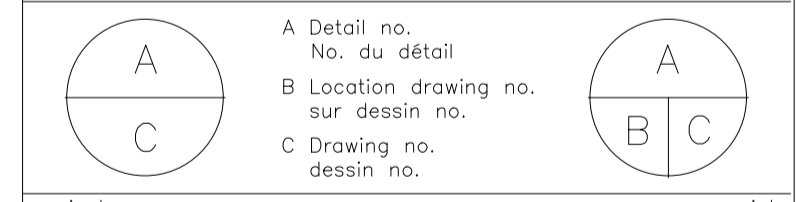
**LEGEND:**

 TYPE 3 ABATEMENT ENCLOSURE



No.	Date	Revision	By:	Date
0	24 08 2015	ORIGINAL	B.H.	

Date Printed: \_\_\_\_\_ Date imprimée: \_\_\_\_\_  
 o Verify all dimensions and site conditions and be responsible for same  
 o Vérifier toutes les dimensions et l'état des lieux et en assumer la responsabilité



project: PHASED ASBESTOS ABATEMENT GROUND FLOOR SOUTH WING, BUILDING M-58, NRC, OTTAWA, ONTARIO

drawing: PHASE 02 ASBESTOS ABATEMENT PREPARATION AND EXECUTION DETAILS

designed	N.S.	conçu	date	08/2015	date
drawn	R.P.	dessiné	scale	NTS	échelle
checked	B.H.	vérifié	sheet	SHEET3 of/de SHEET3	feuille
approved	B.H.	approuvé	W.O.no.	BE-OT-021545	D.T.no.