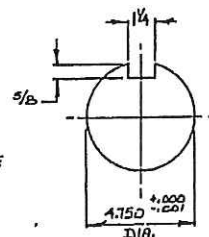
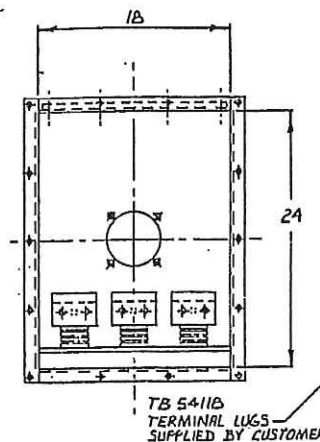
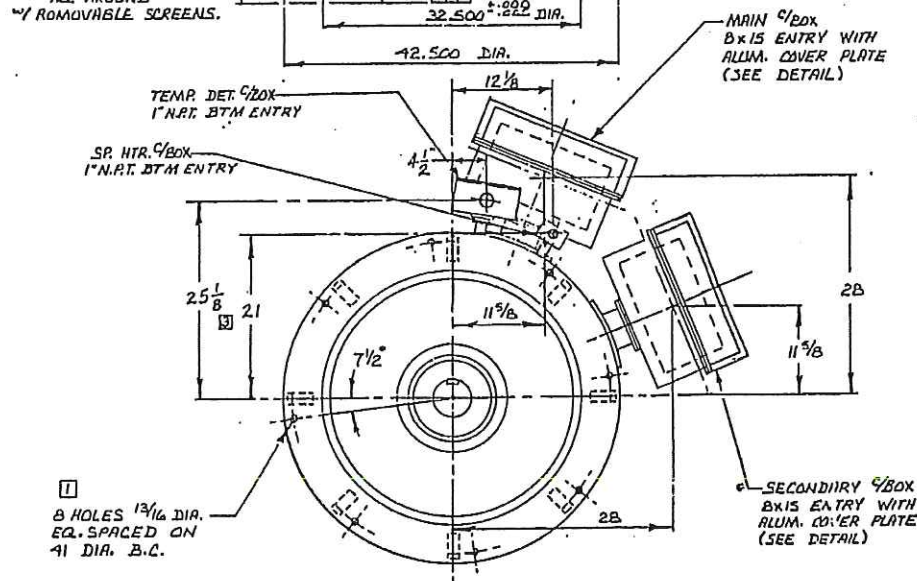
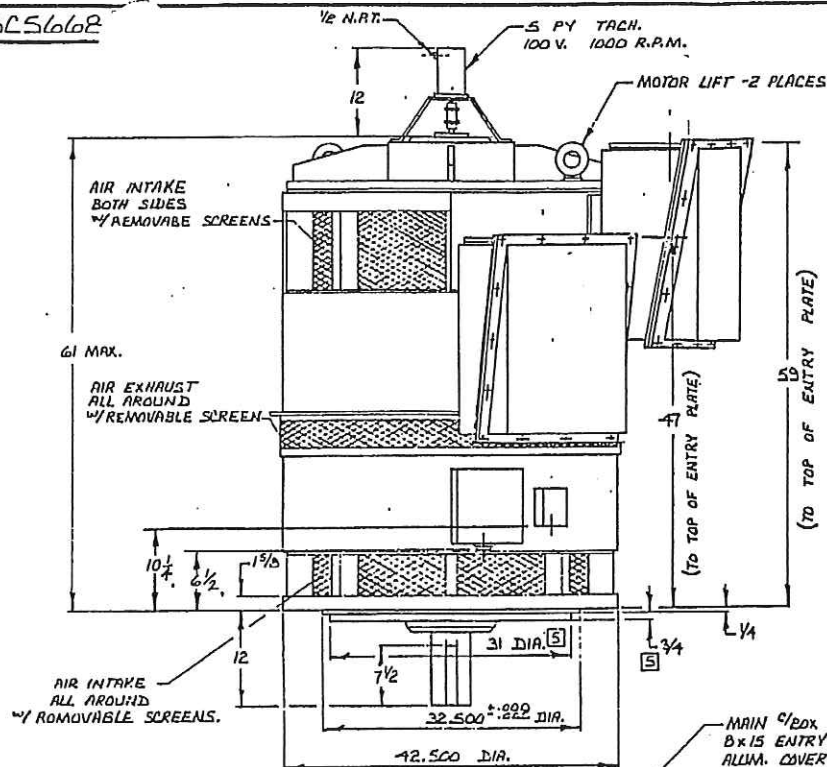
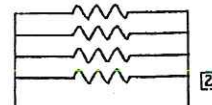
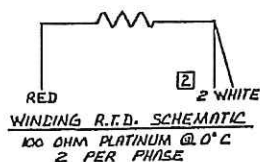


SC566B



SHAFT DETAIL



SPACE HEATER SCHEMATIC  
1 PH. 60 HZ 120 V. 1000 WATTS

NOTES:

- USE ONLY A CERTIFIED PRINT FOR CONSTRUCTION OR INSTALLATION.
- ALL DIMENSIONS ARE IN INCHES.
- MAIN & SECONDARY C/BOXES MAY BE ROTATED 180°.
- TOP & BTM. BEARINGS ARE A/F. GREASE LUB. WITH PRESSURE RELIEF FITTINGS.
- ALL C/BOXES & EXHAUST COVER ARE REMOVABLE FOR MOTOR INSTALLATION.
- ESTIMATED MOTOR WT. 5000 LBS.
- [2] - MOTOR REQUIRES A MINIMUM OF 4500 C.F.M. @ 1" H<sub>2</sub>O COOLING AIR.

D.E. BRG. SKF 6324  
O.D.E. BRG SKF 7324

CHANGES	REVISIONS
1. 12-11-11	1. 12-11-11
2. 12-11-11	2. 12-11-11
3. 12-11-11	3. 12-11-11
4. 12-11-11	4. 12-11-11
5. 12-11-11	5. 12-11-11
6. 12-11-11	6. 12-11-11
7. 12-11-11	7. 12-11-11
8. 12-11-11	8. 12-11-11
9. 12-11-11	9. 12-11-11
10. 12-11-11	10. 12-11-11
11. 12-11-11	11. 12-11-11
12. 12-11-11	12. 12-11-11
13. 12-11-11	13. 12-11-11
14. 12-11-11	14. 12-11-11
15. 12-11-11	15. 12-11-11
16. 12-11-11	16. 12-11-11
17. 12-11-11	17. 12-11-11
18. 12-11-11	18. 12-11-11
19. 12-11-11	19. 12-11-11
20. 12-11-11	20. 12-11-11
21. 12-11-11	21. 12-11-11
22. 12-11-11	22. 12-11-11
23. 12-11-11	23. 12-11-11
24. 12-11-11	24. 12-11-11
25. 12-11-11	25. 12-11-11
26. 12-11-11	26. 12-11-11
27. 12-11-11	27. 12-11-11
28. 12-11-11	28. 12-11-11
29. 12-11-11	29. 12-11-11
30. 12-11-11	30. 12-11-11
31. 12-11-11	31. 12-11-11
32. 12-11-11	32. 12-11-11
33. 12-11-11	33. 12-11-11
34. 12-11-11	34. 12-11-11
35. 12-11-11	35. 12-11-11
36. 12-11-11	36. 12-11-11
37. 12-11-11	37. 12-11-11
38. 12-11-11	38. 12-11-11
39. 12-11-11	39. 12-11-11
40. 12-11-11	40. 12-11-11
41. 12-11-11	41. 12-11-11
42. 12-11-11	42. 12-11-11
43. 12-11-11	43. 12-11-11
44. 12-11-11	44. 12-11-11
45. 12-11-11	45. 12-11-11
46. 12-11-11	46. 12-11-11
47. 12-11-11	47. 12-11-11
48. 12-11-11	48. 12-11-11
49. 12-11-11	49. 12-11-11
50. 12-11-11	50. 12-11-11
51. 12-11-11	51. 12-11-11
52. 12-11-11	52. 12-11-11
53. 12-11-11	53. 12-11-11
54. 12-11-11	54. 12-11-11
55. 12-11-11	55. 12-11-11
56. 12-11-11	56. 12-11-11
57. 12-11-11	57. 12-11-11
58. 12-11-11	58. 12-11-11
59. 12-11-11	59. 12-11-11
60. 12-11-11	60. 12-11-11
61. 12-11-11	61. 12-11-11
62. 12-11-11	62. 12-11-11
63. 12-11-11	63. 12-11-11
64. 12-11-11	64. 12-11-11
65. 12-11-11	65. 12-11-11
66. 12-11-11	66. 12-11-11
67. 12-11-11	67. 12-11-11
68. 12-11-11	68. 12-11-11
69. 12-11-11	69. 12-11-11
70. 12-11-11	70. 12-11-11
71. 12-11-11	71. 12-11-11
72. 12-11-11	72. 12-11-11
73. 12-11-11	73. 12-11-11
74. 12-11-11	74. 12-11-11
75. 12-11-11	75. 12-11-11
76. 12-11-11	76. 12-11-11
77. 12-11-11	77. 12-11-11
78. 12-11-11	78. 12-11-11
79. 12-11-11	79. 12-11-11
80. 12-11-11	80. 12-11-11
81. 12-11-11	81. 12-11-11
82. 12-11-11	82. 12-11-11
83. 12-11-11	83. 12-11-11
84. 12-11-11	84. 12-11-11
85. 12-11-11	85. 12-11-11
86. 12-11-11	86. 12-11-11
87. 12-11-11	87. 12-11-11
88. 12-11-11	88. 12-11-11
89. 12-11-11	89. 12-11-11
90. 12-11-11	90. 12-11-11
91. 12-11-11	91. 12-11-11
92. 12-11-11	92. 12-11-11
93. 12-11-11	93. 12-11-11
94. 12-11-11	94. 12-11-11
95. 12-11-11	95. 12-11-11
96. 12-11-11	96. 12-11-11
97. 12-11-11	97. 12-11-11
98. 12-11-11	98. 12-11-11
99. 12-11-11	99. 12-11-11
100. 12-11-11	100. 12-11-11

<b>RELIANCE</b> ELECTRIC LIMITED		STRATFORD CANADA
OUTLINE VWA 3-35 - Q.D.P. ENCL.		
600 KW. - 1000 R.P.M. - 3 1/2" 1600		
DRAWN: [initials]	DISTRIBUTION:	DRAWING NUMBER
CHECKED: [initials]	PROD:	
DATE: 12-11-11	SHOP:	
APPROVED: [initials]		SC566B