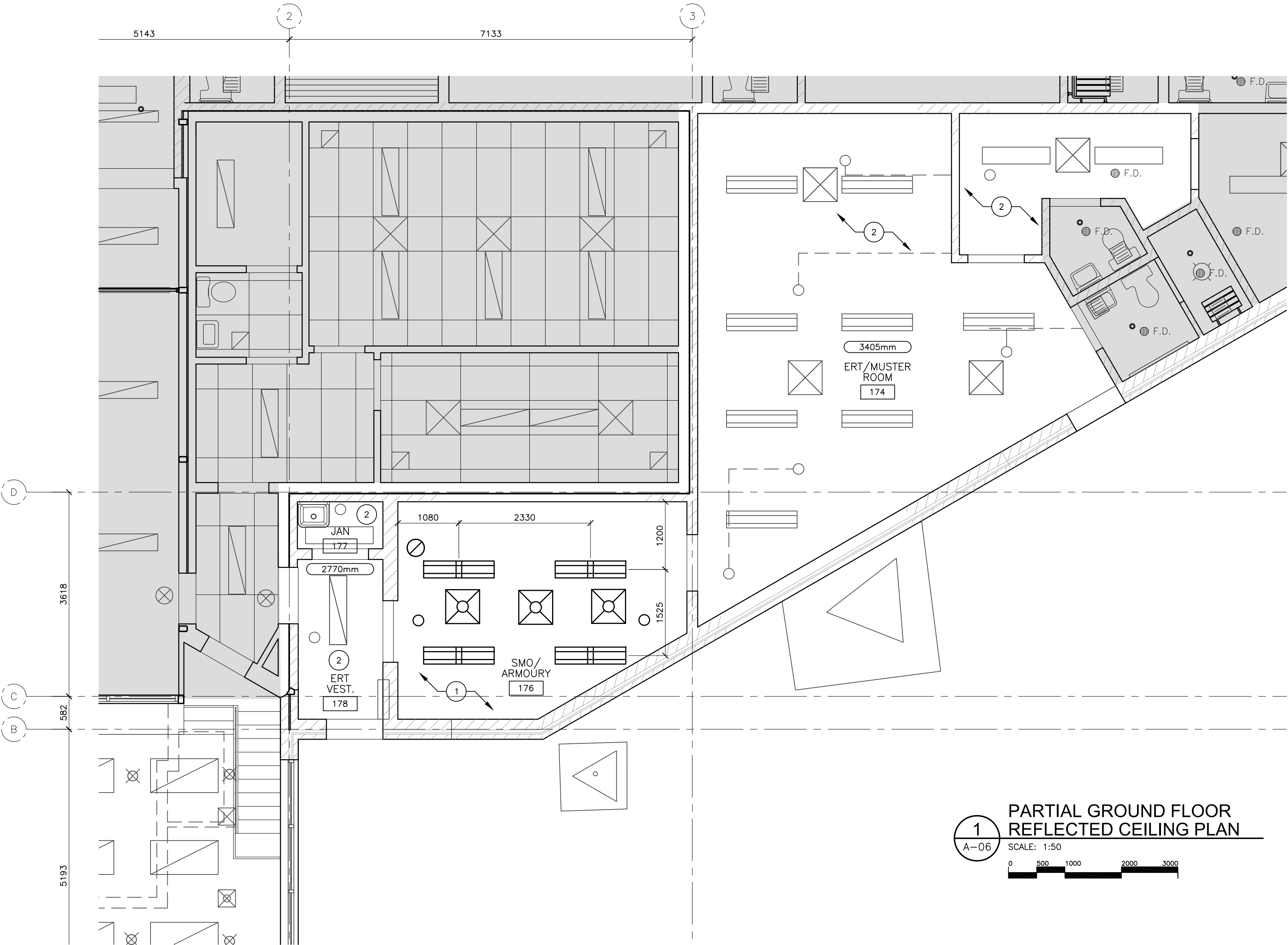


2 PARTIAL BASEMENT REFLECTED CEILING PLAN  
A-06 SCALE: 1:50



1 PARTIAL GROUND FLOOR REFLECTED CEILING PLAN  
A-06 SCALE: 1:50

KEY NOTES

- CEILING TO BE OPEN TO SLAB ABOVE. PATCH, REPAIR, AND SEAL ALL OPENINGS, PENETRATIONS, CRACKS AND JOINTS FOR AIR LEAKAGE, HUMIDITY CONTROL. PROVIDE FIRESTOPPING AT ALL WALL/CEILING JOINTS AND PENETRATIONS. PAINT SLAB WITH PT2. REFER TO DRAWING A-07 FOR PAINT FINISH.
- EXISTING CEILING FINISH TO REMAIN. PATCH AS REQUIRED DUE TO ROOF PENETRATIONS. PAINT WITH PT2. REFER TO DRAWING A-07 FOR PAINT FINISH.
- PATCH, REPAIR, AND SEAL ALL OPENINGS, PENETRATIONS, CRACKS AND JOINTS FOR AIR LEAKAGE, HUMIDITY CONTROL. PROVIDE FIRESTOPPING AT ALL WALL/CEILING JOINTS AND PENETRATIONS. PAINT CEILING WITH PT2. REFER TO DRAWING A-07 FOR PAINT FINISH.

GENERAL NOTES:

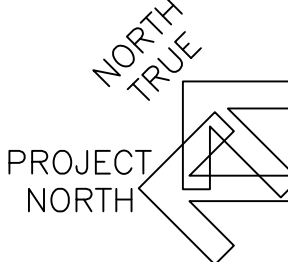
- REFER TO MECHANICAL DRAWINGS FOR FULL HVAC, PLUMBING AND SPRINKLER UPGRADE SCOPE OF WORK.
- REFER TO ELECTRICAL DRAWINGS FOR FULL LIGHTING AND POWER UPGRADE SCOPE OF WORK.

LEGEND

	EXPLOSION PROOF LIGHT FIXTURE
	RECESSED FLUORESCENT LIGHT FIXTURE WITH COVER LENS
	SURFACE MOUNTED/SUSPENDED FLUORESCENT LIGHT FIXTURE; NO LENS
	SPRINKLER HEAD
	MECHANICAL DIFFUSER
	MECHANICAL HUME HOOD EXHAUST

DIALOG®

stamp



1	BID	2015-08-05
revision	issue	date

Do not scale drawings.  
Verify all dimensions and conditions on site and immediately  
notify the Departmental Representative of all discrepancies.

A	Detail No. No. du détail
B	drawing no. - where detail required dessin no. - où détail exigé
C	drawing no. - where detailed dessin no. - où détaillé

project title  
titre du projet  
**CAMPBELLFORD, ONTARIO**  
WARKWORTH INSTITUTION BLDG WW27  
CORRECTIONAL SERVICES CANADA  
15847 County Road 29, KOL 1L0  
**RETROFIT ARMOURY &  
SMO WORK AREA**

drawing title  
titre du dessin  
**PARTIAL BASEMENT AND  
GROUND FLOOR REFLECTED  
CEILING PLANS**

drawn by dessiné par	K MENIER	project manager administrateur de projets
designed by conçu par	NA	
approved by approuvé par	R NORTHCOTT	
bid offre	K HAQUE	
project date date du projet	2015-06-15	
project no. no. du projet	R.069651.001	
drawing no. dessiné no.	A-06	