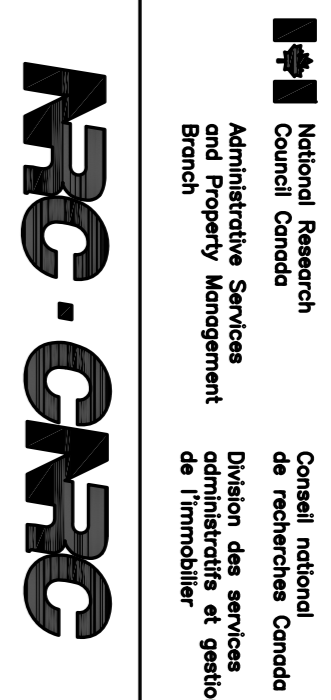


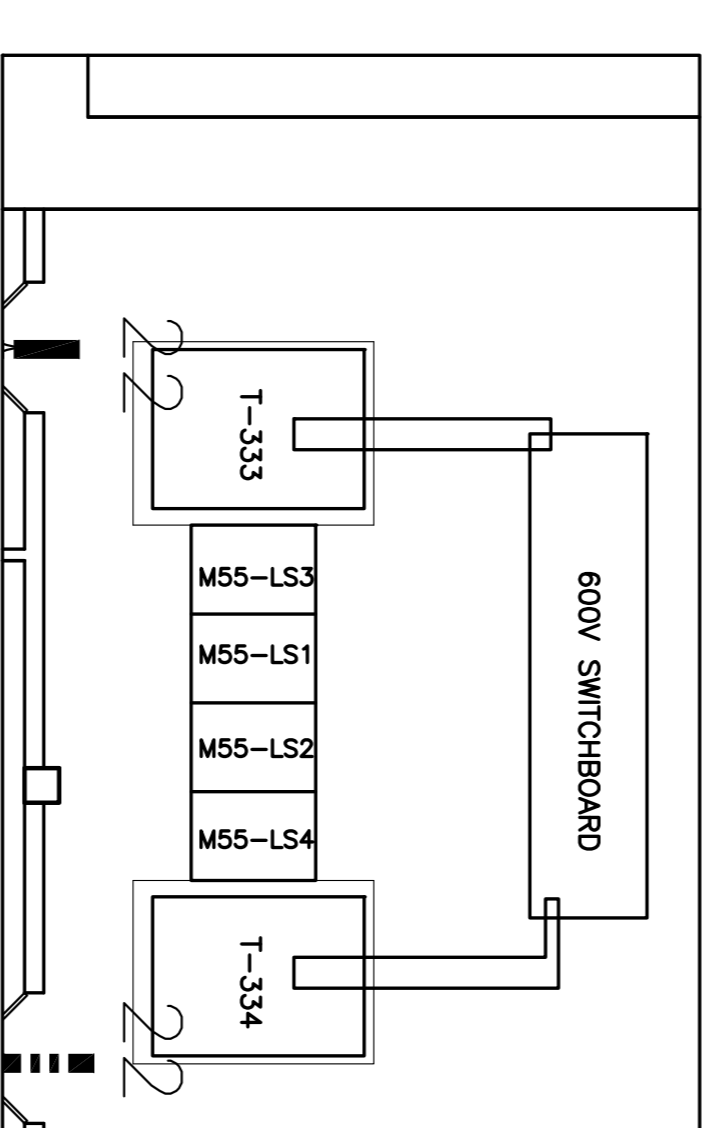
### DRAWING NOTES

- REPLACE EXISTING HV TRANSFORMER AT M55 RM. Z2
- PERFORM TRANSFORMER OIL TOXIC TEST
- REMOVE TRANSFORMER OIL FROM TRANSFORMER OUT OF NRC PROPERTY ASSUME PCB
- PROVIDE NEW DRY TYPE TRANSFORMER COPPER WINDING ACCEPTANCE: HAMMOND OR APPROVED EQUIVALENT
- PROVIDE 4/0 GROUNDING WIRE TO EXISTING GROUNDING POINT.
- PROVIDE QUALITROL TEMPERATURE MONITOR, POWERED BY EXISTING 120V CIRCUIT FOR FAN, IDENTIFY CIRCUIT BEFORE CONNECTION.
- TRANSFORMATION SIZE LIMITED BY 1575mm(W)x2057mm(H), ZEXTRA CARE TO TRANSFORMER ASSEMBLY OF ENCLOSURE AND CORE ON SITE MUST BE SUPERVISED BY MANUFACTURER REPRESENTATIVE
- CONTRACTOR IS RESPONSIBLE FOR REPAIR OF ANY DAMAGES TO BUILDING COMPONENT CAUSED BY TRANSFORMATION.
- PROVIDE NEW NISA PROTEC Z 3-PHASE HV RC SUBBERS, BIL, 95KV, CAT : PZ-MM3-13.8KV SSW, 15KV NON-SHIELDED JUMPER CABLE, EPR INSULATION, NYLON SEMI-CONDUCTING TAPE CONDUCTOR SHIELD, MINIMUM #3 COPPER CONDUCTOR.
- TERMINATE CABLE USING COMPRESSION CONNECTIONS - CABLE MUST BE INSTALLED FROM SUBBER BUSHING THROUGH FREE AIR TO BUS BAR INDICATED. CABLE MUST NOT BE NEAR ANY GROUNDED METAL OR OTHER INSTALLATION TO AVOID INSTALLATION FAILURE.
- SUBBER AND ITS INSTALLATION ARE REQUIRED TO OBTAIN CSA OR ESA CERTIFICATE BEFORE ENERGIZATION. PROVIDE (1) SET OF 15KV RATED GROUNDING DISCHARGING STICK WITH SUFFICIENT ENERGY ABSORBING CAPACITY.
- DISCONNECT TRANSFORMER PRIMARY BUSWAY, PROVIDE 15KV TECK CABLE WITH STRESS CONE AND CONNECTION FROM 15KV SWITCH TO TRANSFORMER.
- MODIFY EXISTING 600V BUSWAY TO BE CONNECTED TO TRANSFORMER SECONDARY.
- TESTING AS PER SPEC BY SCHNEIDER OR Eaton.
- PROVIDE TEST REPORT.
- AIRPORT PROVIDE FOLLOWING WORK
- NEW DUC POINT TO SUBBER N/O CONTACT OF SAFETY SWITCH EXISTING TRANSFORMER ALARM TO QUALITROL CONTROLLER.

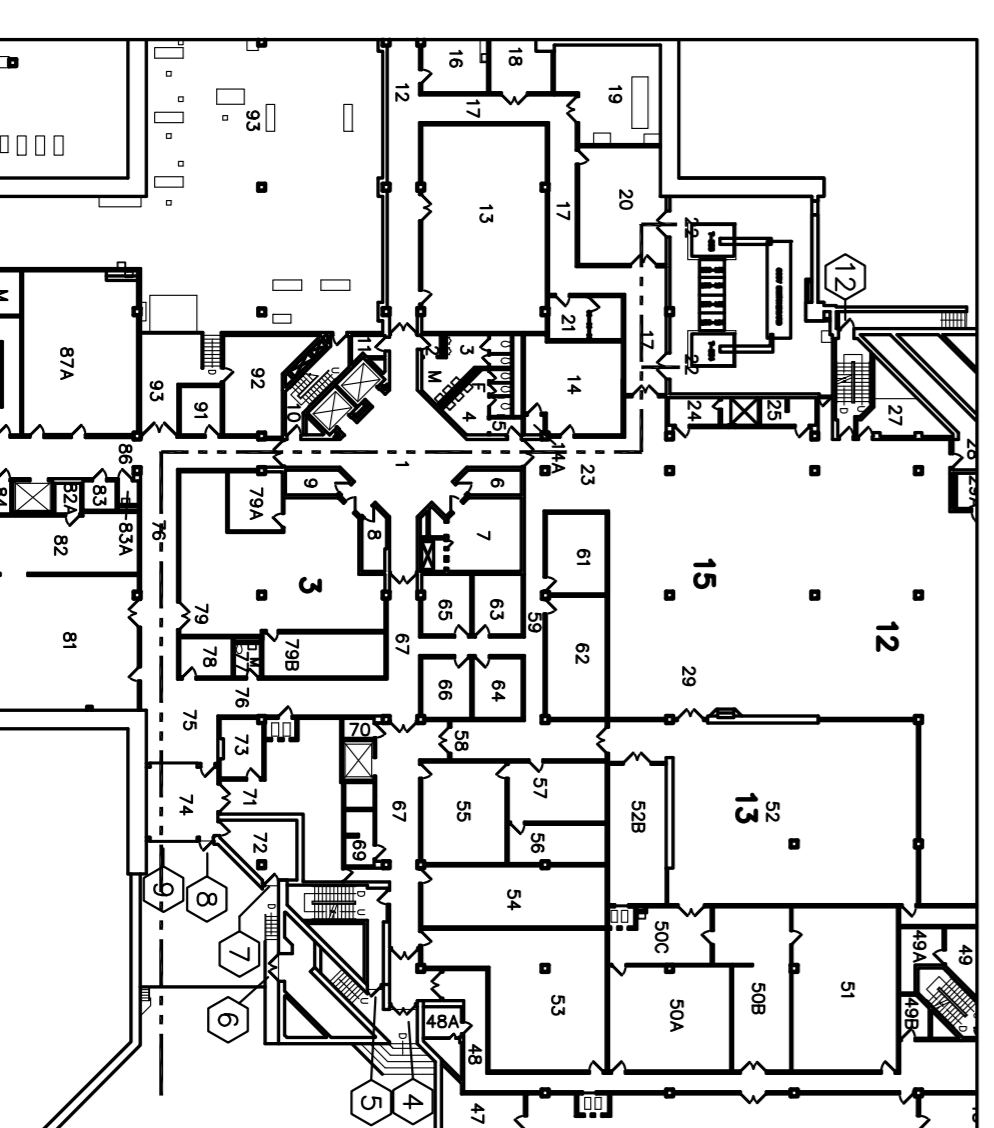


### GENERAL NOTES

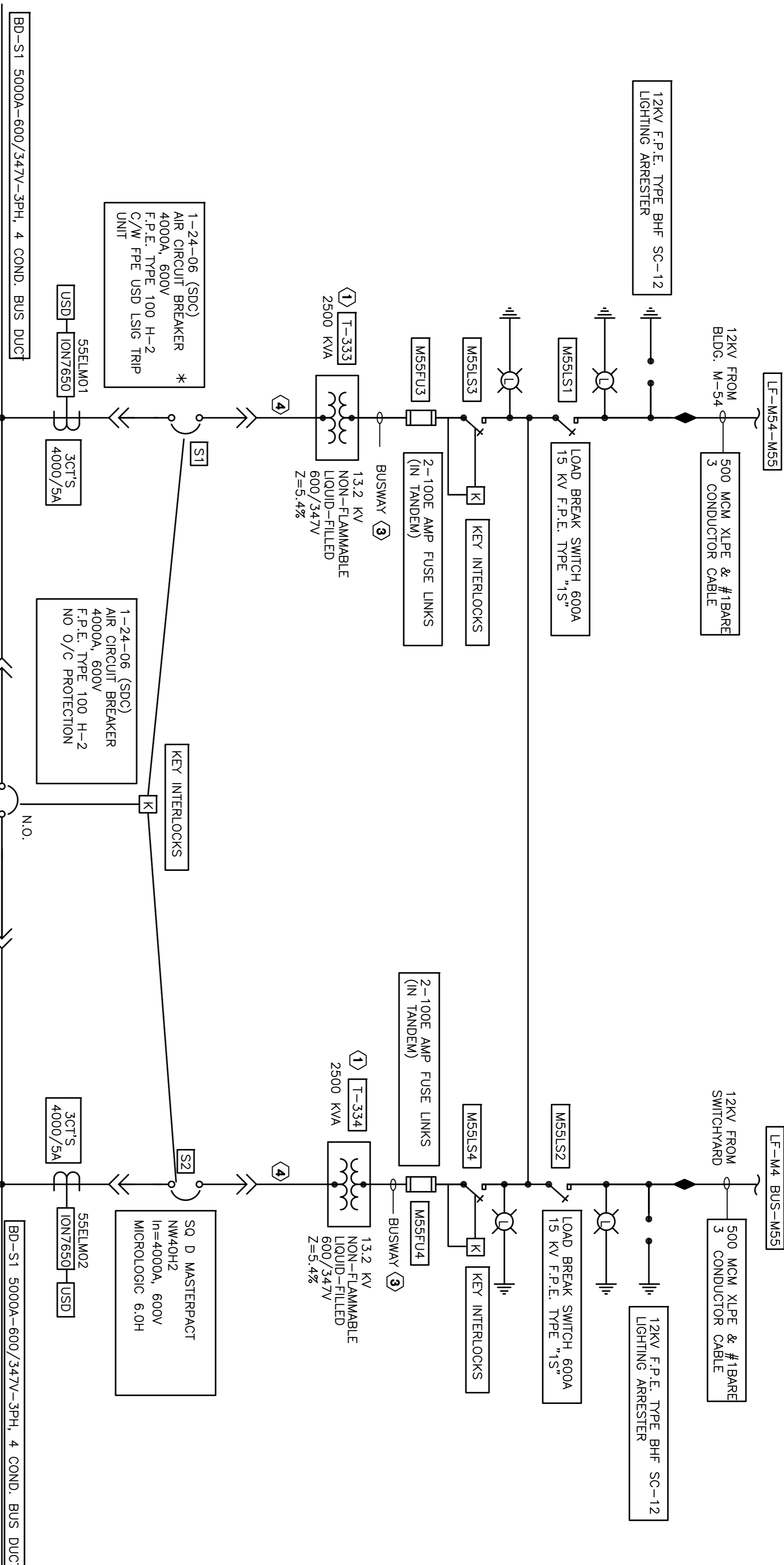
- CONTRACTORS TO CHECK AND VERIFY ALL DIMENSIONS ON SITE PRIOR TO DEMOLITION OR CONSTRUCTION AND REPORT ANY ERRORS OR OMISSIONS TO NRC DEPARTMENTAL REPRESENTATIVE.
- CONTRACTORS MUST VISIT THE SITE & FULLY FAMILIARIZE THEMSELVES WITH THE SCOPE OF THE WORK.
- PREVENT THE SPREAD OF DUST & DEBRIS BEYOND THE WORK AREA AND CLEAN ALL SURFACES AT COMPLETION.
- MAKE GOOD ALL SURFACES AFFECTED BY THIS WORK.
- COORDINATE ALL SHUTDOWNS WITH THE NRC DEPARTMENTAL REPRESENTATIVE.
- FILL ALL HOLES, PATCH & PAINT ALL SURFACES IN CONTRACT AREA. COLOUR SCHEME TO MATCH EXISTING.
- REMOVE MEANS REMOVE AND DISPOSE OF OFF SITE UNLESS OTHERWISE NOTED.
- PROVIDE LABELS TO NEW DEVICES TO INDICATE POWER SOURCE. UPDATE PANEL SCHEDULES AFTER JOB COMPLETION.
- ALL WIRE TO BE IN EMT UNLESS OTHERWISE NOTED.
- OUTAGE IS ONLY SCHEDULED DURING WEEKEND OR AFTER HOUR, UNLESS OTHERWISE SPECIFIED BY NRC REPRESENTATIVE.
- WEEKEND OUTAGE MUST BE CARRIED BETWEEN FRIDAY 1800 AND MONDAY 0300 AFTER HOUR OUTAGE MUST BE CARRIED BETWEEN SAME DAY 1800 AND NEXT DAY 0300
- ALL LOADS TO BE RESUMED AT THE END OF OUTAGE
- TO USE NRC OWNED CRANE ON SITE, CONTRACTOR IS REQUIRED TO PROVIDE OWN CERTIFIED CRANE OPERATOR, AND CERTIFY THE CRANE BEFORE AND AFTER EACH OPERATION, AS ALTERNATIVE, CONTRACTOR CAN BRING OWN CRANE.



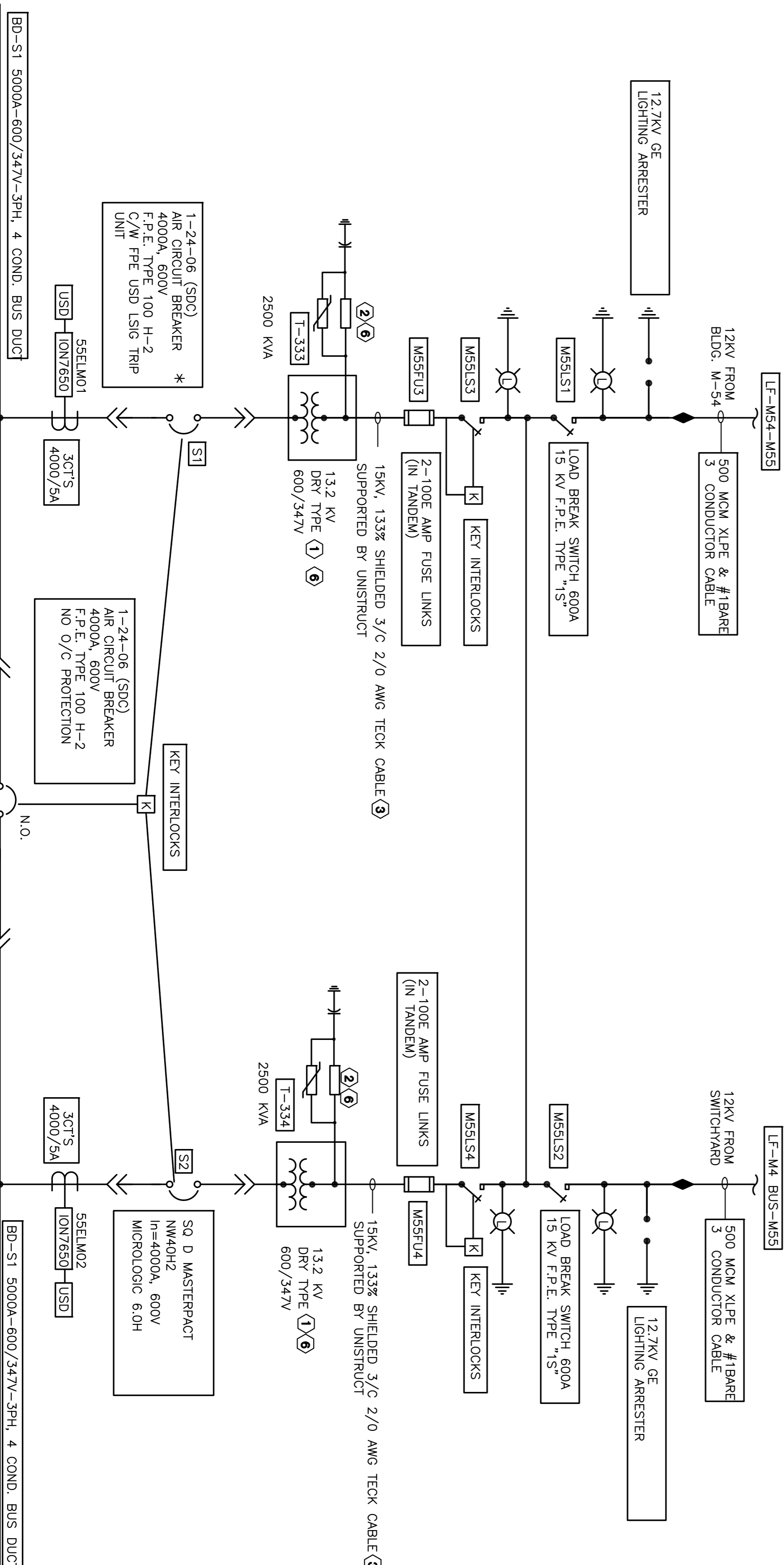
3 ELECTRICAL ROOM 22  
SCALE: 1:100



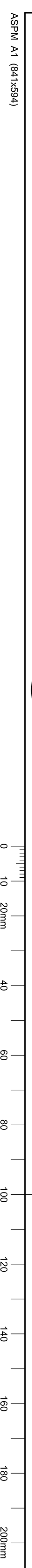
4 GROUND FLOOR ROUTE  
SCALE: 1:500



1 EXISTING SINGLE LINE DIAGRAM  
SCALE: E01



2 NEW SINGLE LINE DIAGRAM  
SCALE: E01



drawing		designed		checked		approved	
SINGLE LINE DIAGRAM AND FLOOR PLAN		KXL		KXL		KXL	
MONTREAL ROAD CAMPUS		SEP/2015		AS NOTED		E01	
project		M55 HIGH VOLTAGE TRANSFORMER REPLACEMENT		MONTREAL ROAD CAMPUS		E01	
No. of detail		A		No. of sheet		E01	
Location drawing		B		Title block		E01	
Drawing no.		C		Revision		E01	
Design no.		A		Date		E01	
Project		A		By		E01	
No. of sheet		B		For		E01	
Title block		C		Date		E01	
Revision		A		Imprinte		E01	
Date		22 09 2015		Date		E01	
Revision		1		Date		E01	
By		KXL		Date		E01	
For		KXL		Date		E01	
Date		22 09 2015		Date		E01	
Revision		1		Date		E01	
By		KXL		Date		E01	
For		KXL		Date		E01	
Date		22 09 2015		Date		E01	
Revision		1		Date		E01	
By		KXL		Date		E01	
For		KXL		Date		E01	
Date		22 09 2015		Date		E01	
Revision		1		Date		E01	
By		KXL		Date		E01	
For		KXL		Date		E01	
Date		22 09 2015		Date		E01	
Revision		1		Date		E01	
By		KXL		Date		E01	
For		KXL		Date		E01	
Date		22 09 2015		Date		E01	
Revision		1		Date		E01	
By		KXL		Date		E01	
For		KXL		Date		E01	
Date		22 09 2015		Date		E01	
Revision		1		Date		E01	
By		KXL		Date		E01	
For		KXL		Date		E01	
Date		22 09 2015		Date		E01	
Revision		1		Date		E01	
By		KXL		Date		E01	
For		KXL		Date		E01	
Date		22 09 2015		Date		E01	
Revision		1		Date		E01	
By		KXL		Date		E01	
For		KXL		Date		E01	
Date		22 09 2015		Date		E01	
Revision		1		Date		E01	
By		KXL		Date		E01	
For		KXL		Date		E01	
Date		22 09 2015		Date		E01	
Revision		1		Date		E01	
By		KXL		Date		E01	
For		KXL		Date		E01	
Date		22 09 2015		Date		E01	
Revision		1		Date		E01	
By		KXL		Date		E01	
For		KXL		Date		E01	
Date		22 09 2015		Date		E01	
Revision		1		Date		E01	
By		KXL		Date		E01	
For		KXL		Date		E01	
Date		22 09 2015		Date		E01	
Revision		1		Date		E01	
By		KXL		Date		E01	
For		KXL		Date		E01	
Date		22 09 2015		Date		E01	
Revision		1		Date		E01	
By		KXL		Date		E01	
For		KXL		Date		E01	
Date		22 09 2015		Date		E01	
Revision		1		Date		E01	
By		KXL		Date		E01	
For		KXL		Date		E01	
Date		22 09 2015		Date		E01	
Revision		1		Date		E01	
By		KXL		Date		E01	
For		KXL		Date		E01	
Date		22 09 2015		Date		E01	
Revision		1		Date		E01	
By		KXL		Date		E01	
For		KXL		Date		E01	
Date		22 09 2015		Date		E01	
Revision		1		Date		E01	
By		KXL		Date		E01	
For		KXL		Date		E01	
Date		22 09 2015		Date		E01	
Revision		1		Date		E01	
By		KXL		Date		E01	
For		KXL		Date		E01	
Date		22 09 2015		Date		E01	
Revision		1		Date		E01	
By		KXL		Date		E01	
For		KXL		Date		E01	
Date		22 09 2015		Date		E01	
Revision		1		Date		E01	
By		KXL		Date		E01	
For		KXL		Date		E01	
Date		22 09 2015		Date		E01	
Revision		1		Date		E01	
By		KXL		Date		E01	
For		KXL		Date		E01	
Date		22 09 2015		Date		E01	
Revision		1		Date		E01	
By		KXL		Date		E01	
For		KXL		Date		E01	
Date		22 09 2015		Date		E01	
Revision							